

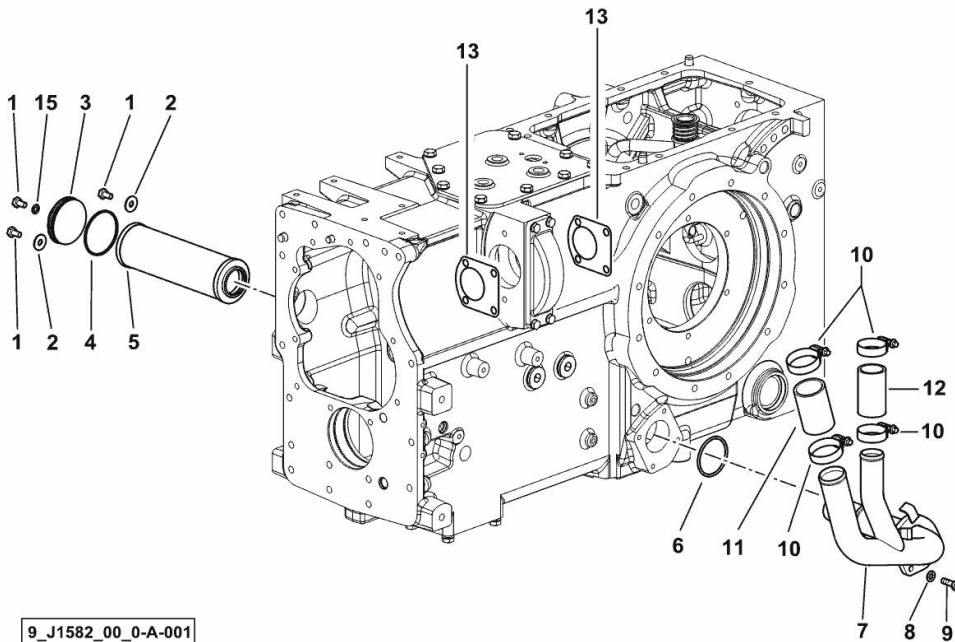
OIL SUCTION

Fig.	P/n	QTY	Name
------	-----	-----	------

Notes:

- FOR TYPES WITH MECHANICAL REMOTE VALVE CONTROL [XM 130 T4i]

1	2.0112.204.2	3	screw m 8 p.1.25x14
2	2.1312.004.3	2	washer 8,4x24x2
3	0.013.8789.0/10	1	cover
4	2.1530.157.0	1	oil seal 64.77x2.62
5	2.4419.484.0	1	oil filter
6	2.1532.138.0	1	oil seal 55.56x3.53
7	0.015.6599.3	1	tube
8	2.1310.004.2	3	flat washer 8.4x17
9	2.0112.209.2	3	screw m 8 p 1.25 x 25
10	2.6851.004.0	4	clamp Ø 32/50
11	2.3213.240.0	1	sleeve
12	2.3213.234.0	1	sleeve Ø 34, L 70
13	0.9104.250.0/10	2	gasket
15	2.1560.004.0	1	copper gasket 8.2 x 14



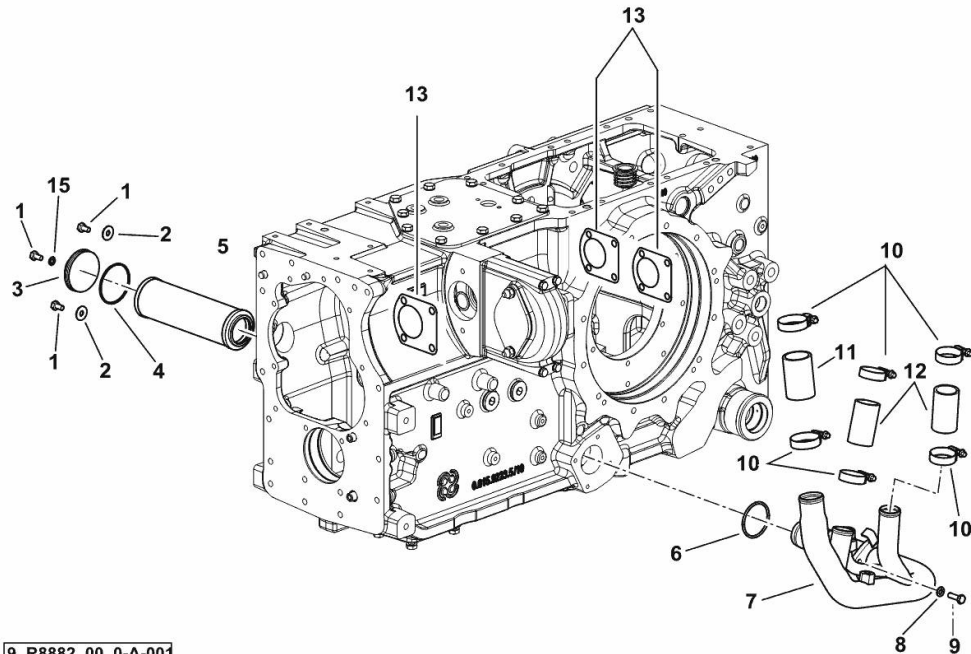
9_J1582_00_0-A-001

OIL SUCTION

Fig.	P/n	QTY	Name
------	-----	-----	------

Notes:

- FOR TYPES WITH 8-WAY REMOTE VALVE WITH FLOW CONTROL [XM 130 T4i] - FOR TYPES WITH ELECTRICAL REMOTE VALVE CONTROL [XM 130 T4i]



1	2.0112.204.2	3	screw m 8 p.1.25x14
2	2.1312.004.3	2	washer 8,4x24x2
3	0.013.8789.0/10	1	cover
4	2.1530.157.0	1	oil seal 64.77x2.62
5	2.4419.795.0	1	hydr.oil filter elem.
6	2.1532.138.0	1	oil seal 55.56x3.53
7	0.017.5872.3	1	tube
8	2.1310.004.2	3	flat washer 8.4x17
9	2.0112.209.2	3	screw m 8 p 1.25 x 25
10	2.6851.004.0	4	clamp Ø 32/50
11	2.3213.240.0	1	sleeve
12	2.3213.234.0	2	sleeve Ø 34, L 70
13	0.9104.250.0/10	3	gasket
15	2.1560.004.0	1	copper gasket 8.2 x 14

9_R8882_00_0-A-001

XM 130 T4i

Section: H0 - HYDRAULIC AND PNEUMATIC SYSTEM|

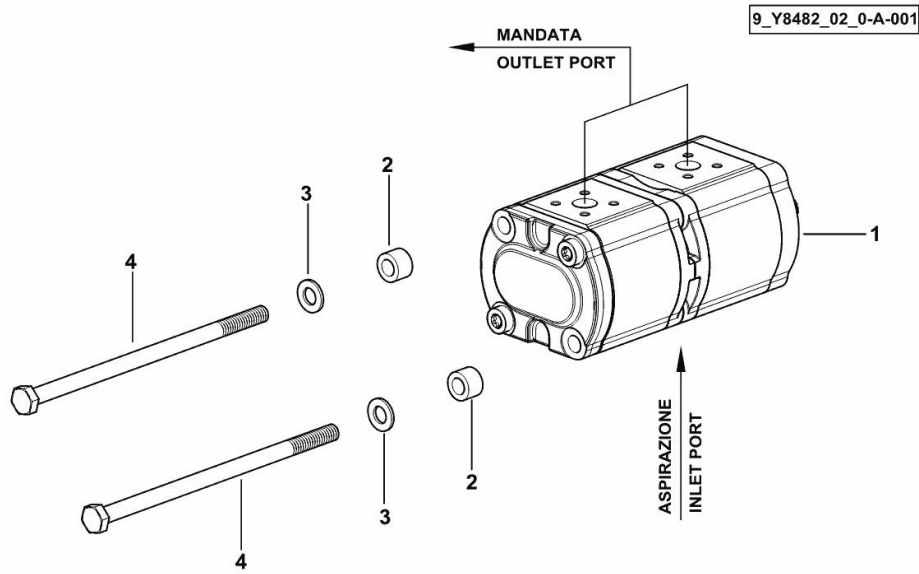
Ref: H0.01.10 (1)

HYDRAULIC PUMP 14 + 11 cm³, dx/rh/re

Fig.	P/n	QTY	Name
------	-----	-----	------

Notes:
[XM 130 T4i]

1	2.4539.860.0	1	hydraulic pump 14 + 11 cm ³ , dx/rh/re, (BOSCH)
2	2.1549.781.2	2	spacer 10.5x12x18
3	2.1475.003.2	2	washer 10
4	2.0113.346.2	2	screw m 10 p1.5 x 200



XM 130 T4i

Section: H0 - HYDRAULIC AND PNEUMATIC SYSTEM|

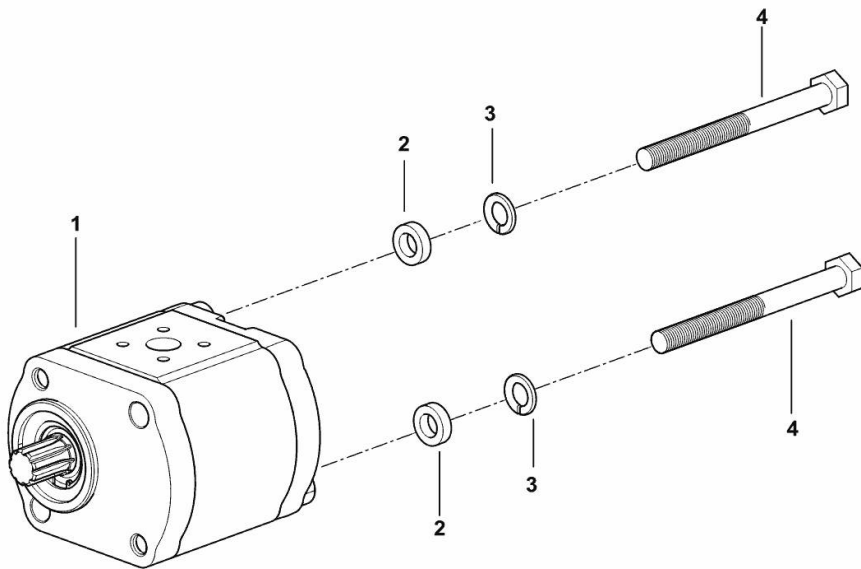
Ref: H0.01.11 (1)

HYDRAULIC PUMP 14 cc dx/rh/re

Fig.	P/n	QTY	Name
------	-----	-----	------

Notes:
[XM 130 T4i]

1	2.4539.480.0/10	1	hydraulic pump 14 cc dx/rh/re - BOSCH ☞ 2.4539.480.0/10
2	2.1549.321.0	2	spacer 10.5X18X5
3	2.1474.010.2	2	washer 10
4	2.0112.331.2	2	screw m 10 p.1.5x110



9_R8982_01_0-A-001

XM 130 T4i

Section: H0 - HYDRAULIC AND PNEUMATIC SYSTEM|

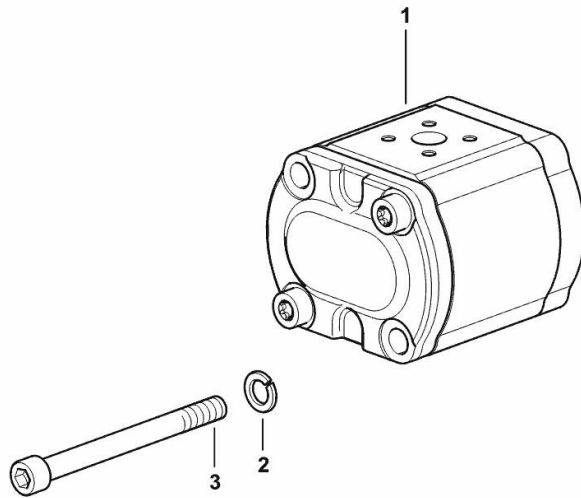
Ref: H0.01.12 (1)

HYDRAULIC PUMP 22.5 cc - dx/rh/re

Fig.	P/n	QTY	Name
------	-----	-----	------

Notes:
[XM 130 T4i]

1	2.4539.620.0/10	1	hydraulic pump 22.5 cc dx/rh/re - BOSCH - ☞ 2.4539.620.0/10
2	2.1480.015.2	2	washer 10
3	2.0169.019.2	2	screw m 10x135



9_21082_01_0-A-001

XM 130 T4i

Section: H0 - HYDRAULIC AND PNEUMATIC SYSTEM]

Ref: H0.01.13 (1)

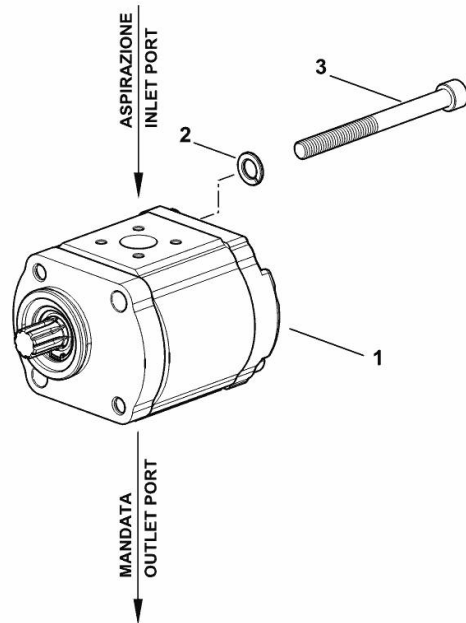
QUIET-RUNNING HYDRAULIC PUMP 16 cm³, sx/lh/li

Fig.	P/n	QTY	Name
------	-----	-----	------

Notes:
[XM 130 T4i]

1	2.4539.015.0	1	hydraulic pump 16 cm ³ , sx/lh/li - BOSCH
2	2.1474.010.2	2	washer 10
3	2.0312.327.2	2	screw m 10 p.1.5x110

9_Y8182_01_0-A-001



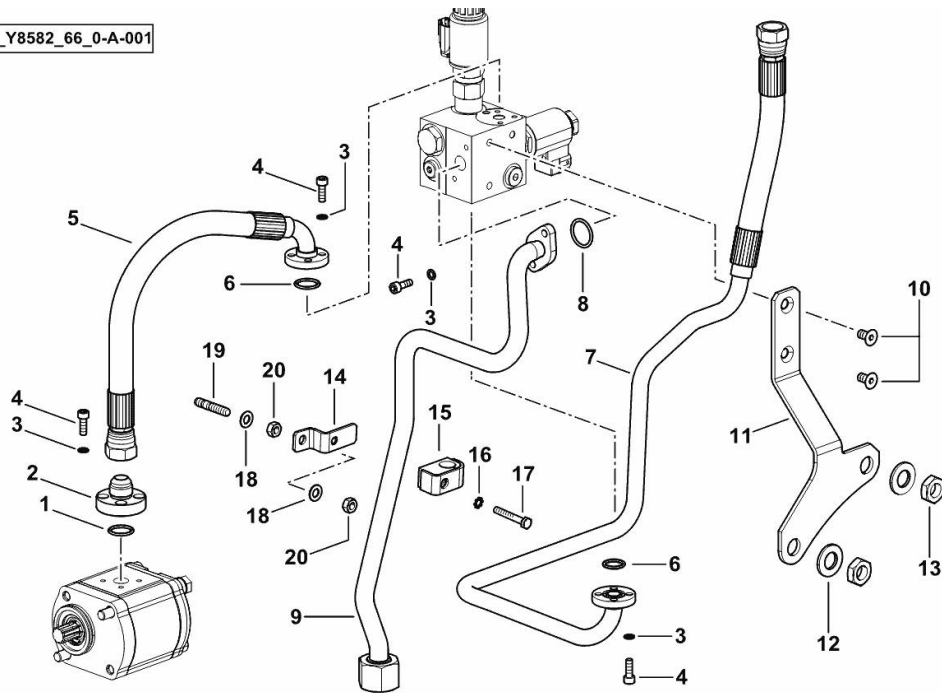
HYDRAULIC SYSTEM

Fig.	P/n	QTY	Name
------	-----	-----	------

Notes:

- FOR TYPES WITH 8-WAY REMOTE VALVE WITH FLOW CONTROL [XM 130 T4i]

9_Y8582_66_0-A-001



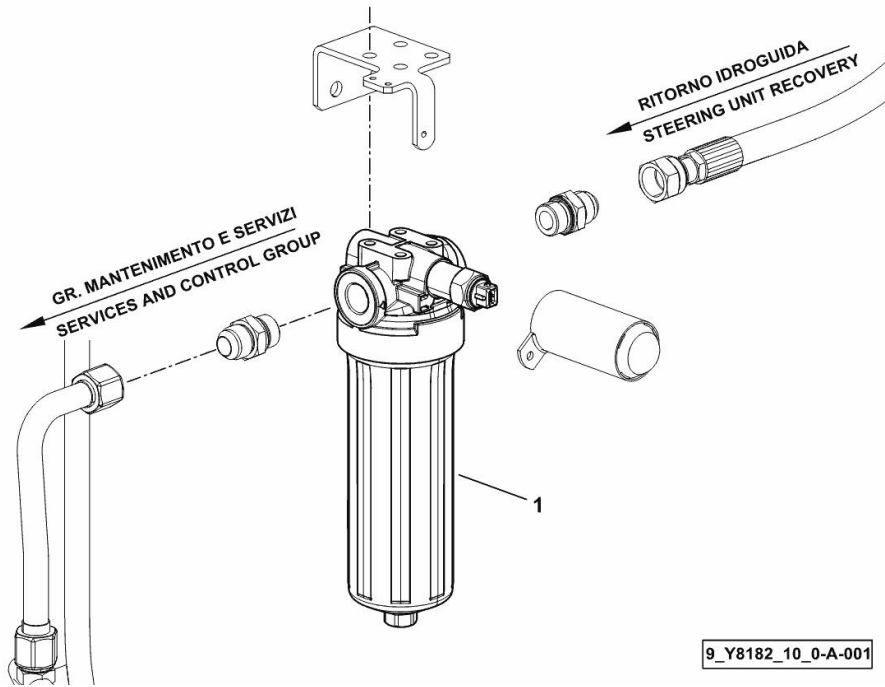
1	2.1531.052.0	1	oil seal 20.29 x 2.62
2	0.010.9142.0/10	1	flange
3	2.1480.012.2	12	washer 6, d128
4	2.0312.105.2	12	screw m 6 p.1 x 18
5	0.019.5740.3	1	tube
6	2.1531.043.0	2	oil seal 17.13x2.62
7	0.019.5376.3	1	tube
8	2.1531.062.0	1	oil seal 23.81 x 2.62
9	0.019.5391.3	1	tube
10	2.0342.303.6	2	screw m 8 p. 1.25x16
11	0.019.5710.0	1	bracket
12	2.1310.009.2	2	flat washer 15x20
13	2.1011.508.2	2	nut m 14 p.1.5
14	0.020.0426.3	1	bracket
15	2.3320.108.0	1	terminal
16	2.1470.002.2	1	lock washer 6
17	2.0112.015.2	1	screw m 6 p.1x40
18	2.1310.004.2	2	flat washer 8.4x17
19	2.0422.207.2	1	stud bolt m 8 p 1.25 x 30
20	2.1011.105.2	2	nut m 8 p.1.25

OIL PRESSURE LINE FILTER

Fig.	P/n	QTY	Name
------	-----	-----	------

Notes:
[XM 130 T4i]

1	2.4419.813.0	1	oil filter 9" ☞ 2.4419.813.0
---	--------------	---	---------------------------------



XM 130 T4i

Section: H0 - HYDRAULIC AND PNEUMATIC SYSTEM|

Ref: H0.01.17 (1)

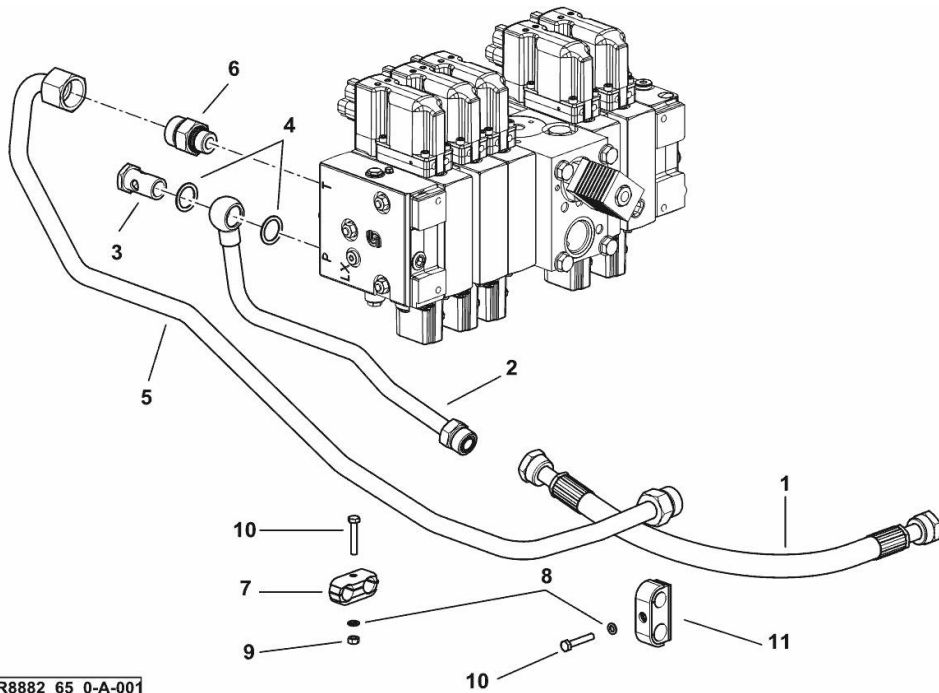
HYDRAULIC SYSTEM FOR SECOND PUMP

Fig.	P/n	QTY	Name
------	-----	-----	------

Notes:

- FOR TYPES WITH ELECTRICAL REMOTE VALVE CONTROL [XM 130 T4i]

1	0.017.8992.3	1	tube
2	0.017.8991.3	1	tube
3	2.3335.009.2	1	pipe union m 22 p.1.5 x 39
4	2.1560.018.0	2	gasket 22.2 x 29
5	0.017.8993.3	1	tube
6	2.3275.016.0	1	pipe fitting m 22
7	2.3321.020.0	1	collar Ø 16/16
8	2.1470.002.2	2	lock washer 6
9	2.1011.103.2	1	nut m 6 p.1
10	2.0112.013.2	2	screw m 6 p.1 x 35
11	2.3320.217.0	1	collar Ø 16/18



9_R8882_65_0-A-001

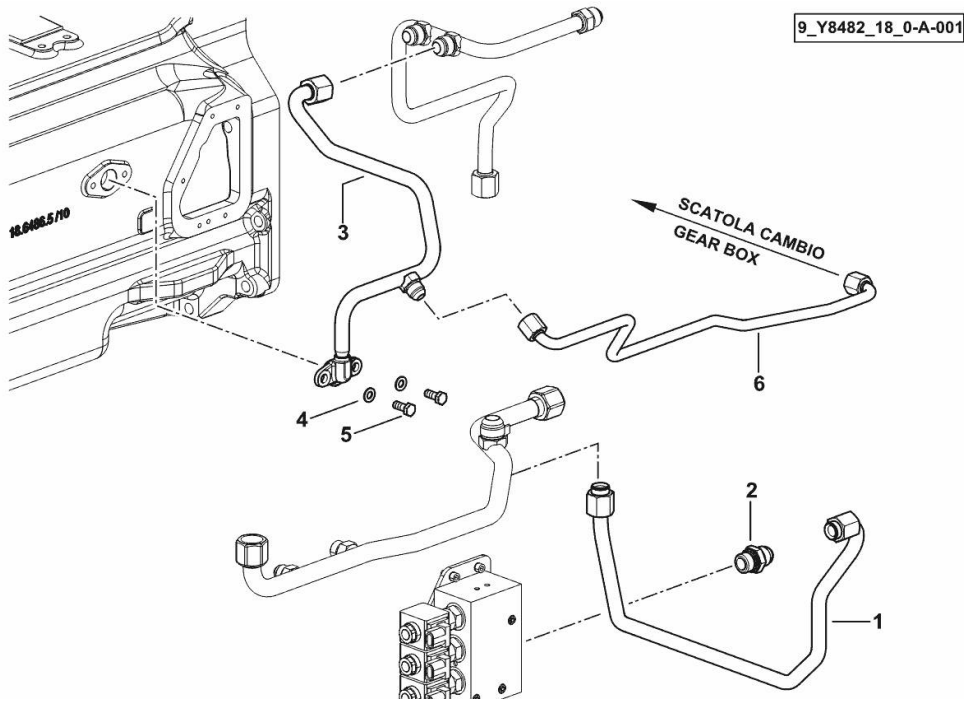
HYDRAULIC SYSTEM PARTS KIT H-M-L

Fig.	P/n	QTY	Name
------	-----	-----	------

Notes:

- POWERSHIFT [XM 130 T4i]

1	0.019.3782.3	1	tube
2	2.3249.173.2	1	pipe fitting M/M 7/8 JIC-M22
3	0.019.3783.3/10	1	tube
4	2.1310.004.2	2	flat washer 8.4x17
5	2.0112.207.2	2	screw m 8 p 1.25 x 20
6	0.020.0667.3	1	tube



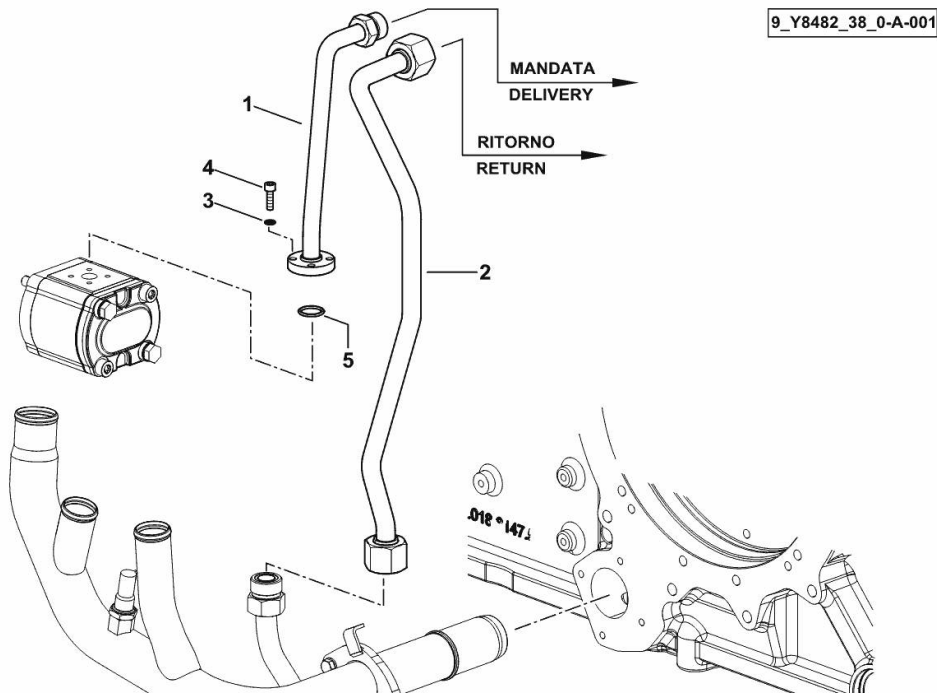
HYDRAULIC SYSTEM PARTS KIT

Fig.	P/n	QTY	Name
------	-----	-----	------

Notes:

- FOR TYPES WITH ELECTRICAL REMOTE VALVE CONTROL [XM 130 T4i]

1	0.017.8994.3	1	tube - DELIVERY
2	0.019.5678.3	1	tube - RETURN
3	2.1480.012.2	4	washer 6, d128
4	2.0312.106.2	4	screw m 6 p.1 x 20
5	2.1531.052.0	1	oil seal 20.29 x 2.62

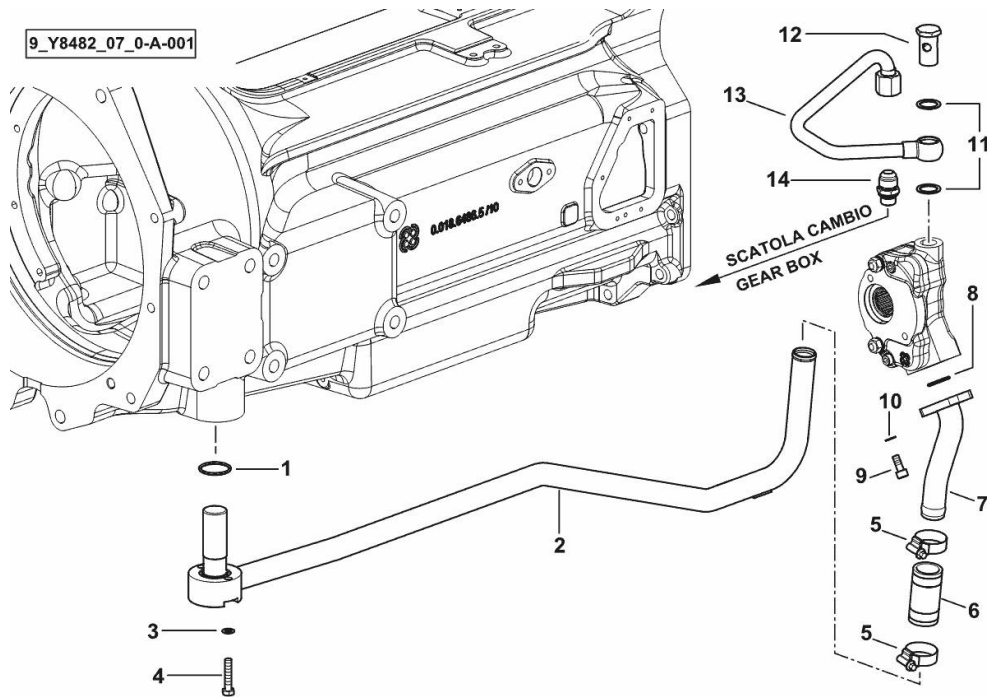


OIL TRANSFER PUMP HYDRAULIC SYSTEM

Fig.	P/n	QTY	Name
------	-----	-----	------

Notes:
[XM 130 T4i]

1	2.1531.091.0	1	oil seal 34.60 x 2.62
2	0.018.6201.3	1	tube
3	2.1470.004.2	2	lock washer 8
4	2.0112.215.2	2	screw m 8 p.1.25 x 40
5	2.6851.004.0	2	clamp Ø 32/50
6	2.3213.228.0	1	sleeve
7	0.015.6617.3	1	tube
8	2.1531.062.0	1	oil seal 23.81 x 2.62
9	2.0312.206.2	2	screw m 8 p 1.25 x 20
10	2.1480.014.2	2	washer 8
11	2.1560.018.0	2	gasket 22.2 x 29
12	2.3335.009.2	1	pipe union m 22 p.1.5 x 39
13	0.015.1335.3	1	tube
14	2.3249.141.2	1	pipe fitting 7/8 JIC-M18



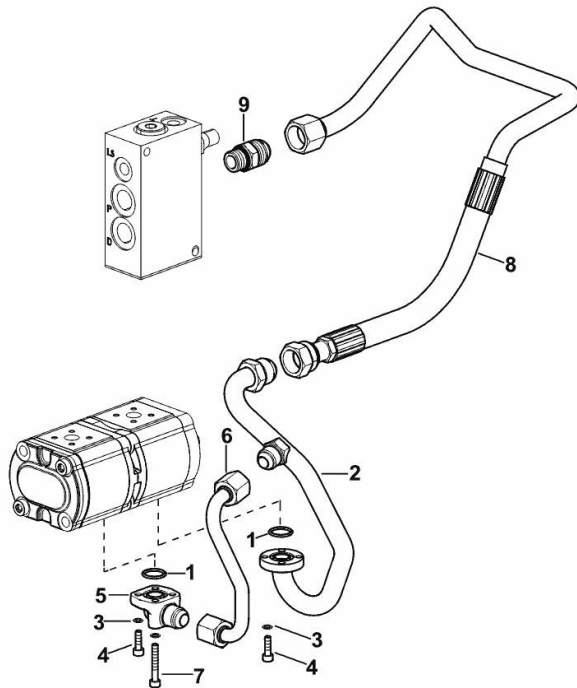
FRONT SUSPENSION DELIVERY LINE

Fig.	P/n	QTY	Name
------	-----	-----	------

Notes:

- 60 LT [XM 130 T4i]

1	2.1531.052.0	2	oil seal 20.29 x 2.62
2	0.019.1172.3	1	tube
3	2.1480.012.2	8	washer 6, d128
4	2.0312.106.2	6	screw m 6 p.1 x 20
5	0.008.9626.0	1	pipe fitting
6	0.019.1173.3	1	tube
7	2.0312.114.2	2	screw m 6 p.1x40
8	0.020.2663.3	1	tube
9	2.3249.158.2	1	pipe fitting



9_AG982_49_0-A-001

XM 130 T4i

Section: H0 - HYDRAULIC AND PNEUMATIC SYSTEM|

Ref: H0.01.22 (1)

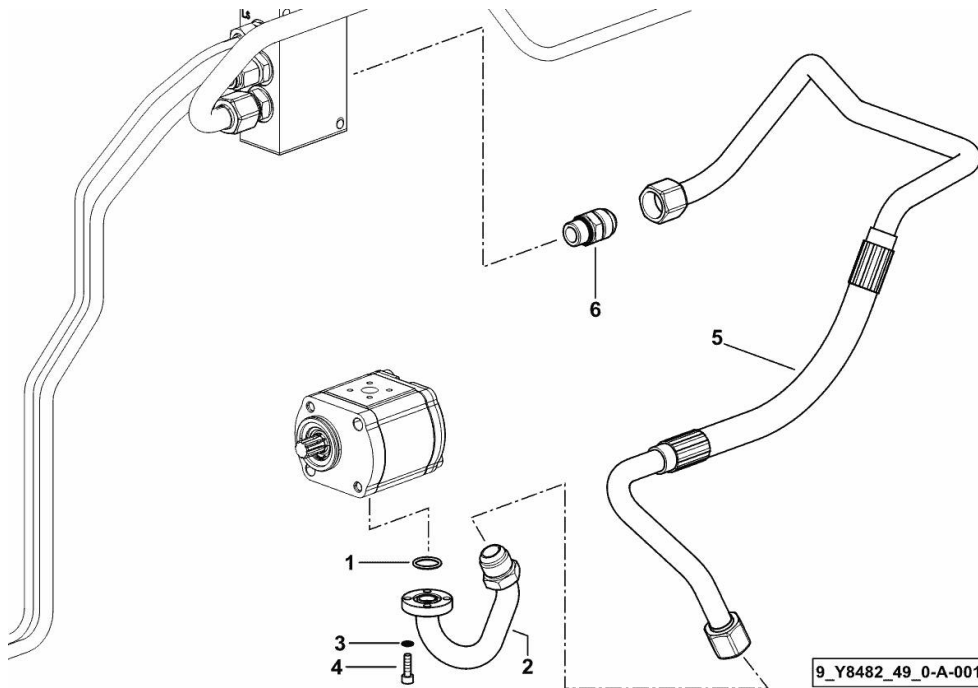
FRONT SUSPENSION DELIVERY LINE

Fig.	P/n	QTY	Name
------	-----	-----	------

Notes:

- 60 LT ECO [XM 130 T4i]

1	2.1531.052.0	1	oil seal 20.29 x 2.62
2	0.015.1442.3	1	tube
3	2.1480.012.2	4	washer 6, d128
4	2.0312.106.2	4	screw m 6 p.1 x 20
5	0.019.1206.3	1	tube
6	2.3249.158.2	1	pipe fitting



XM 130 T4i

Section: H0 - HYDRAULIC AND PNEUMATIC SYSTEM|

Ref: H0.01.23 (1)

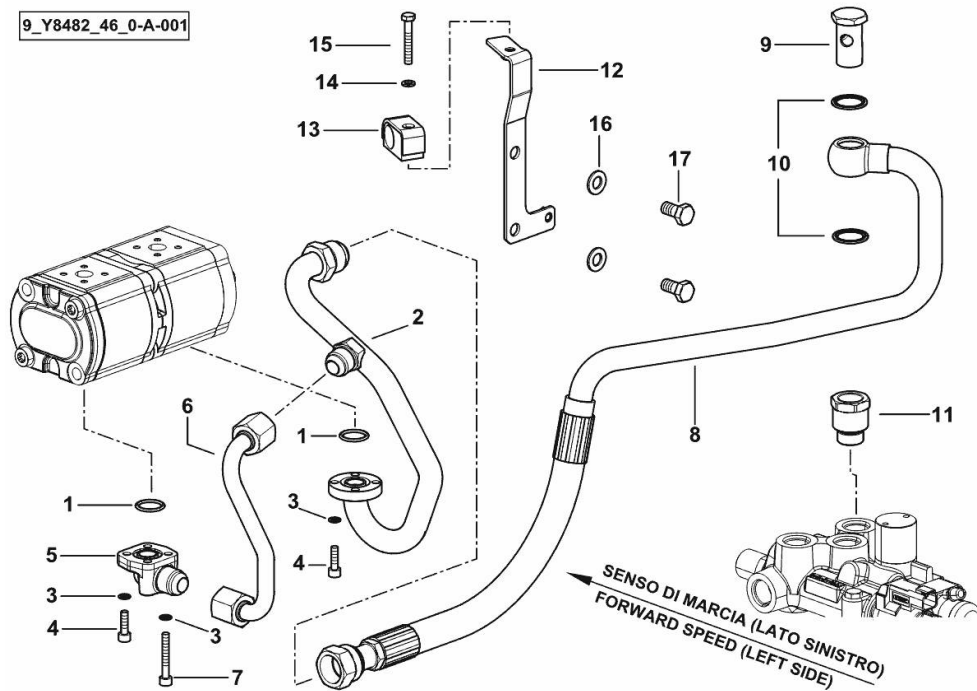
SYSTEM FROM HYDRAULIC PUMP TO HYDRAULIC BRAKES

Fig.	P/n	QTY	Name
------	-----	-----	------

Notes:

- 60 LT [XM 130 T4i]

9_Y8482_46_0-A-001



1	2.1531.052.0	2	oil seal 20.29 x 2.62
2	0.019.1172.3	1	tube
3	2.1480.012.2	8	washer 6, d128
4	2.0312.106.2	6	screw m 6 p.1 x 20
5	0.008.9626.0	1	pipe fitting
6	0.019.1173.3	1	tube
7	2.0312.114.2	2	screw m 6 p.1x40
8	0.019.3768.3	1	tube
9	2.3335.009.2	1	pipe union m 22 p.1.5 x 39
10	2.1561.112.0	2	gasket Ø 22 -B-
11	2.3249.465.2	1	pipe fitting m 22 p.1.5
12	0.019.8951.3	1	bracket
13	2.3320.111.0	1	terminal Ø 20
14	2.1470.002.2	1	lock washer 6
15	2.0112.015.2	1	screw m 6 p.1x40
16	2.1475.003.2	2	washer 10
17	2.0113.307.2	2	screw m 10 p 1.5 x 20

XM 130 T4i

Section: H0 - HYDRAULIC AND PNEUMATIC SYSTEM|

Ref: H0.01.24 (1)

SYSTEM FROM HYDRAULIC PUMP TO HYDRAULIC BRAKES

9_Y8282_46_0-A-001

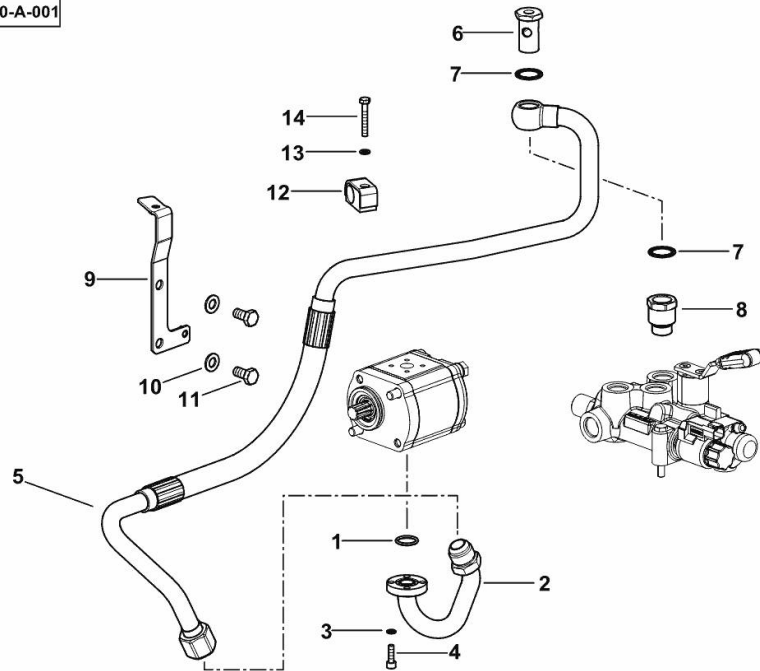


Fig.	P/n	QTY	Name
------	-----	-----	------

Notes:

- 90 LT [XM 130 T4i]

1	2.1531.052.0	1	oil seal 20.29 x 2.62
2	0.015.1442.3	1	tube
3	2.1480.012.2	4	washer 6, d128
4	2.0312.106.2	4	screw m 6 p.1 x 20
5	0.017.8368.3	1	tube
6	2.3335.009.2	1	pipe union m 22 p.1.5 x 39
7	2.1561.112.0	2	gasket Ø 22 -B-
8	2.3249.465.2	1	pipe fitting m 22 p.1.5
9	0.019.8951.3	1	bracket
10	2.1475.003.2	2	washer 10
11	2.0112.307.2	2	screw m 10 p.1.5 x 20
12	2.3320.111.0	1	terminal Ø 20
13	2.1470.002.2	1	lock washer 6
14	2.0112.015.2	1	screw m 6 p.1x40

Thank you so much for reading.
Please click the “Buy Now!”
button below to download the
complete manual.



After you pay.

You can download the most
perfect and complete manual in
the world immediately.

Our support email:

ebooklibonline@outlook.com