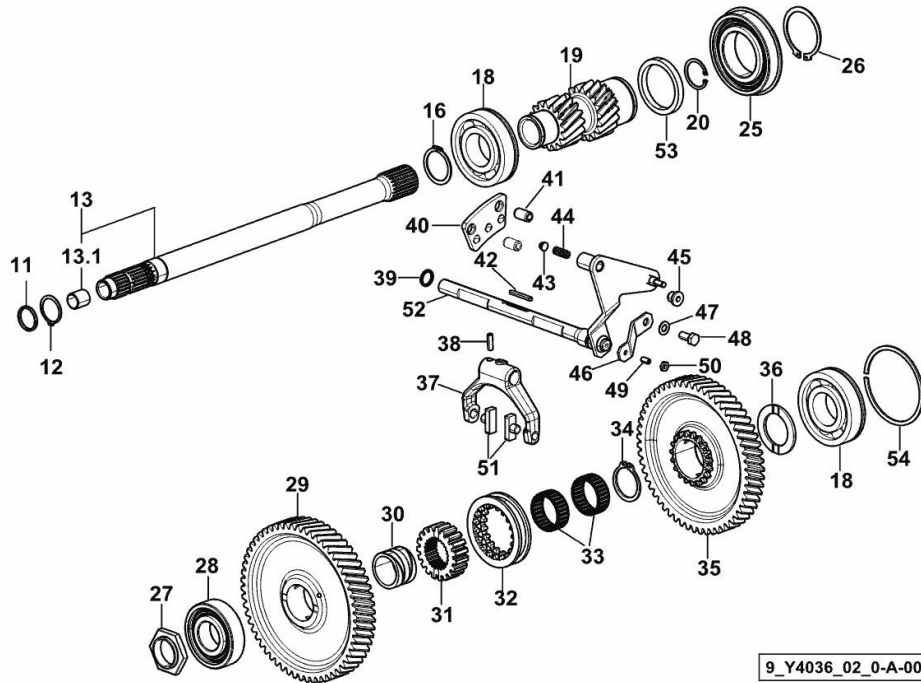


**P.T.O. - 2 SPEED TYPE**

Fig.	P/n	QTY	Name
------	-----	-----	------

**Notes:**

[XM.K 100 T4i -> ZKDY390200TH10001]



11	2.1530.062.0	1	oil seal 23.81 x 2.62
12	2.1410.012.7	1	circlip
13	0.020.8286.3	1	shaft
13.1	2.1559.023.0/10	1	special bushing 15.8x19x20
16	2.1410.016.7	1	circlip 40x1.75
18	2.2999.367.0	2	special bearing 40 x 90 x 23
19	0.021.0852.0	1	gear
20	2.1411.014.1	1	circlip 35
25	2.2043.015.0	1	bearing 55 x 100 x 21
26	2.1410.022.1	1	circlip 55
27	2.255.3661.0	1	ring nut m 35x1.5
28	2.2060.011.0	1	ball bearing 35 x 80 x 21
29	0.020.8206.0	1	gear z=58 z=19
30	0.007.3471.0/10	1	special bushing
31	0.013.1306.0	1	hub Z = 19
32	0.255.3438.0/20	1	sleeve Z = 19
33	2.2770.073.0	2	roller cage 40x47x18
34	2.1412.015.7	1	circlip 40x2.5
35	0.021.0853.0	1	gear
36	0.255.3450.0	1	shoulder ring 40 x 60 x 3.5
37	0.007.3487.0	1	fork
38	2.0512.108.7	1	screw m 6 p.1 x 20
39	2.1530.038.0	1	oil seal 15.54x2.62
40	0.014.8955.0/20	1	small plate
41	2.1630.910.2	2	pin 12 x 20
42	2.1711.011.0	1	stick 5x3x36
43	0.015.1844.0	1	pin
44	2.4019.622.1	1	spring 6.3 x 9.5 x 1.6 x 22.4
45	2.0319.007.2	1	screw m 12 p.1.5
46	0.020.2696.0	1	small plate
47	2.1475.002.2	1	conical washer 8
48	2.0112.206.2	1	screw m 8 p.1.25 x 18
49	2.0532.104.7	1	grub screw m 6 p.1 x 12
50	2.1011.203.2	1	nut m 6 p.1
51	0.255.6463.0	2	shoe
52	0.020.7773.2/10	1	lever
53	2.1549.816.0	1	spacer 55x68x8.5
54	2.1429.067.7	1	circlip Ø 90

**4 SPEED P.T.O.**

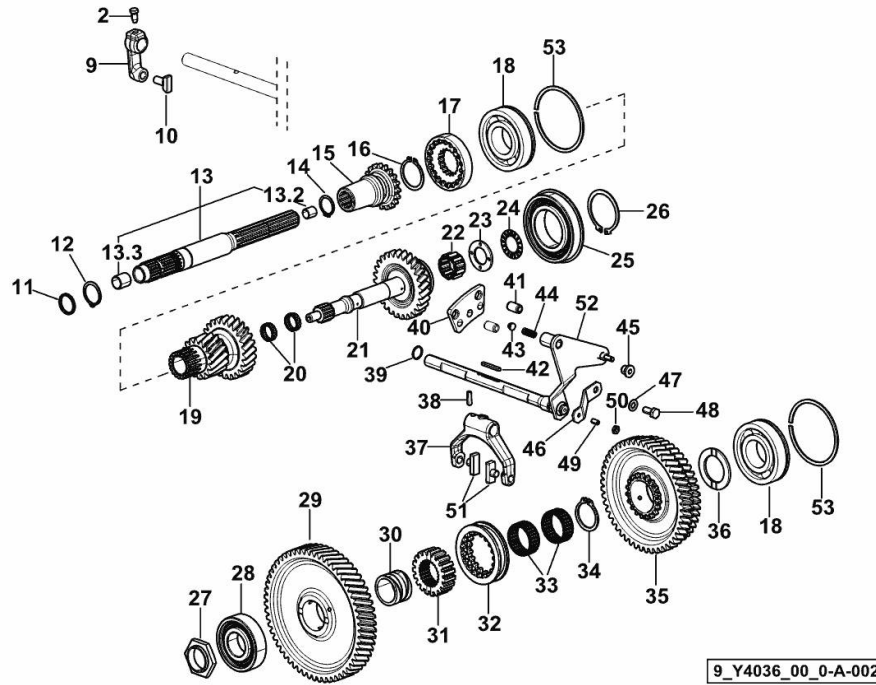


Fig.	P/n	QTY	Name
------	-----	-----	------

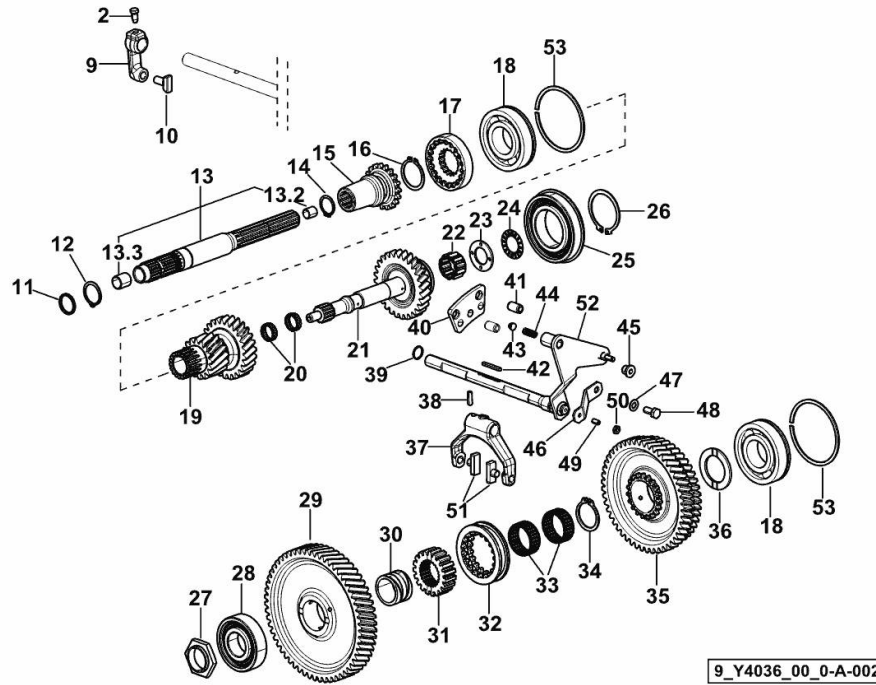
**Notes:**

[XM.K 100 T4i -> ZKDY390200TH10001]-> 10001

2	2.0399.019.1	1	screw m 8 p.1 x 16
9	0.007.3492.0	1	small lever
10	0.001.5945.0/10	1	shoe
11	2.1530.062.0	1	oil seal 23.81 x 2.62
12	2.1410.012.7	1	circlip
13	0.007.3479.3/10	1	power take-off shaft
13.2	2.1552.101.0	1	bushing 12 x 14 x 15
13.3	2.1559.023.0/10	1	special bushing 15.8x19x20
14	2.1410.010.7	1	circlip 25
15	0.009.6866.0	1	sleeve
16	2.1410.016.7	1	circlip 40x1.75
17	0.009.6867.0	1	crown wheel
18	2.2999.367.0	2	special bearing 40 x 90 x 23
19	0.020.8207.0	1	gear
20	2.2999.208.0	2	roller cage 20x26x8.8
21	0.020.8210.0	1	gear
22	2.2999.198.0	1	roller cage 25x37x20
23	2.1579.958.0	1	spacer 25 x 44 x 3
24	2.2999.229.0	1	roller cage 25x42x2
25	2.2043.015.0	1	bearing 55 x 100 x 21
26	2.1410.022.1	1	circlip 55
27	0.255.3661.0	1	ring nut m 35x1.5
28	2.2060.011.0	1	ball bearing 35 x 80 x 21
29	0.020.8206.0	1	gear z=58 z=19
30	0.007.3471.0/10	1	special bushing
31	0.013.1306.0	1	hub Z = 19
32	0.255.3438.0/20	1	sleeve Z = 19
33	2.2770.073.0	1	roller cage 40x47x18
34	2.1412.015.7	1	circlip 40x2.5
35	0.020.8208.0	1	gear Z = 49 / Z = 46 / Z = 19
36	0.255.3450.0	1	shoulder ring 40 x 60 x 3.5
37	0.007.3487.0	1	fork
38	2.0512.108.7	1	screw m 6 p.1 x 20
39	2.1530.038.0	1	oil seal 15.54x2.62
40	0.014.8955.0/20	1	small plate
41	2.1630.910.2	2	pin 12 x 20
42	2.1711.011.0	1	stick 5x3x36
43	0.015.1844.0	1	pin
44	2.4019.622.1	1	spring 6.3 x 9.5 x 1.6 x 22.4
45	2.0319.007.2	1	screw m 12 p.1.5
46	0.020.2696.0	1	small plate

**4 SPEED P.T.O.**

Fig.	P/n	QTY	Name
47	2.1475.002.2	1	conical washer 8
48	2.0112.206.2	1	screw m 8 p.1.25 x 18
49	2.0532.104.7	1	grub screw m 6 p.1 x 12
50	2.1011.203.2	1	nut m 6 p.1
51	0.255.6463.0	2	shoe
52	0.020.7773.2/10	1	lever
53	2.1429.067.7	2	circlip Ø 90



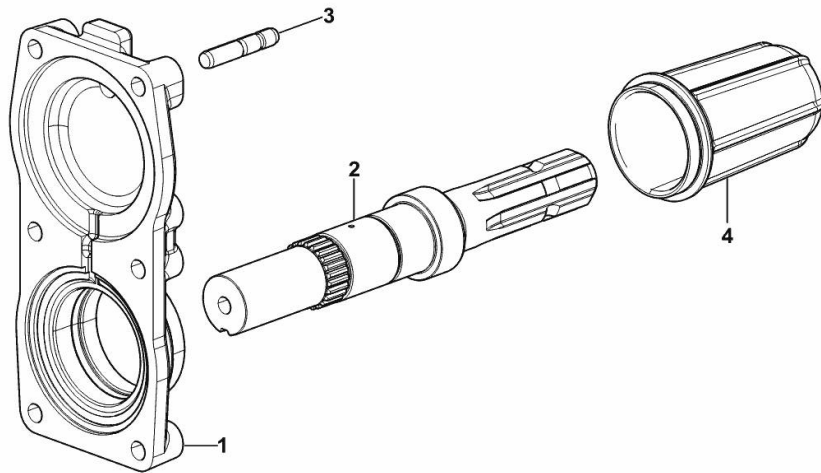
**P.T.O. - FIXED END SHAFT**

Fig.	P/n	QTY	Name
------	-----	-----	------

**Notes:**

[XM.K 100 T4i -> ZKDY390200TH10001]

1	0.010.7888.0/20	1	cover
2	0.007.3475.0/20	1	power take-off shaft
3	2.0432.161.7	6	stud bolt m 10 p.1.5 / p.1.25 x 40
4	0.154.3655.0/10	1	guard



9\_Y4036\_03\_0-A-001

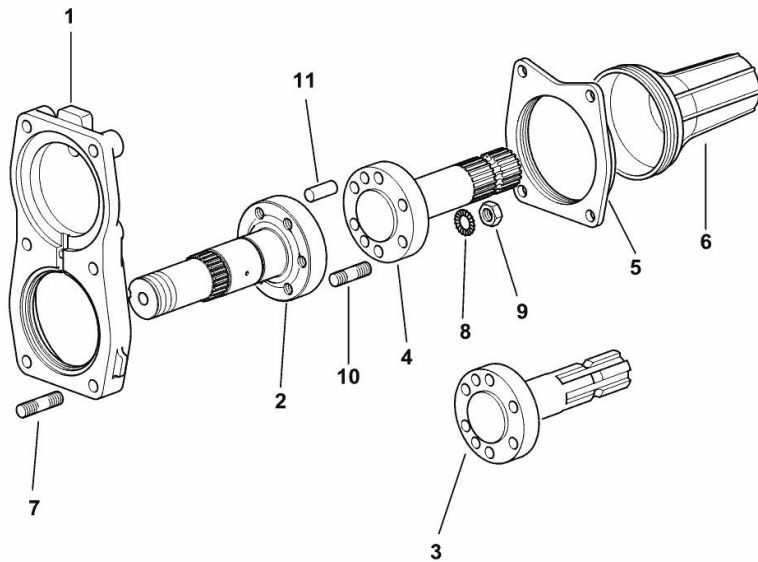
**P.T.O. - WITH INSERTED END SHAFTS**

Fig.	P/n	QTY	Name
------	-----	-----	------

**Notes:**

- FOR TYPES WITH 2/4 SPEED PTO [XM.K 100 T4i -> ZKDY390200TH10001]

1	0.009.6901.0/20	1	cover
2	0.007.3474.0/20	1	power take-off shaft
3	0.167.3660.0/30	1	power take-off shaft 1" 3/8, Z = 6
4	0.163.3671.0/40	1	power take-off shaft 1" 3/8, Z = 21
5	0.445.3151.0/10	1	flange
6	0.008.0757.0	1	guard
7	2.0432.161.7	6	stud bolt m 10 p.1.5 / p.1.25 x 40
8	2.1470.006.2	6	lock washer 10
9	2.1011.421.2	6	nut m 10 p.1.25
10	2.0432.155.7	6	stud bolt m 10 p.1.5 / p. 1.25 x 25
11	2.1651.811.0	2	cylindrical plug 10x24



9\_B8636\_10\_0-A-001

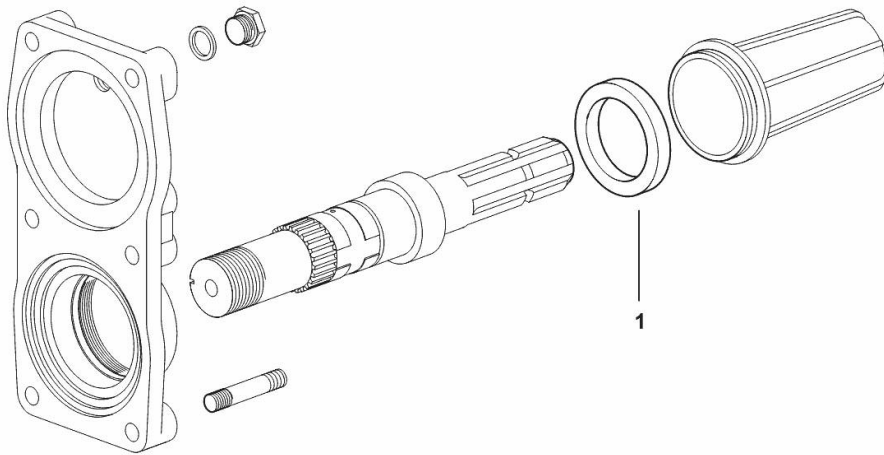
**PTO - PARTS SET WITH STANDARD SEALS**

Fig.	P/n	QTY	Name
------	-----	-----	------

**Notes:**

- FOR TYPES WITH 2/4 SPEED PTO [XM.K 100 T4i -> ZKDY390200TH10001]

1	2.1529.079.0	1	special oil seal 50 x 68 x 10
---	--------------	---	-------------------------------



9\_S6836\_01\_0-A-001

**PTO - PARTS SET WITH WATER PROOF SEALS**

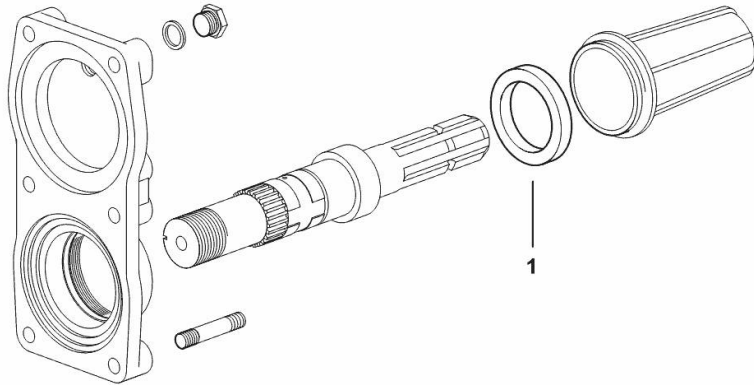
Fig.	P/n	QTY	Name
------	-----	-----	------

**Notes:**

- FOR TYPES WITH 2/4 SPEED PTO [XM.K 100 T4i -> ZKDY390200TH10001]

1	2.1529.101.0	1	special oil seal 50x68x12.5
---	--------------	---	-----------------------------

9\_S6836\_02\_0-A-001



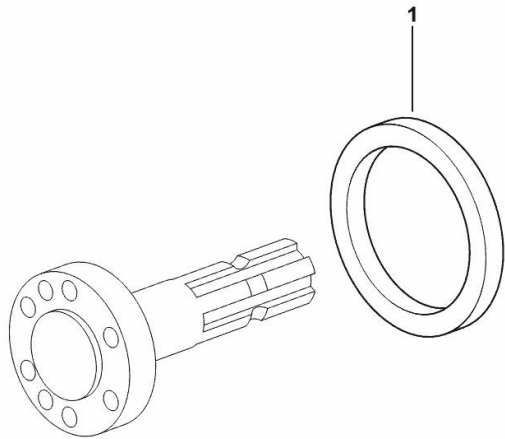
**PTO - SEAL RING FOR INSERTED END SHAFT - STANDARD VERSION**

Fig.	P/n	QTY	Name
------	-----	-----	------

**Notes:**

[XM.K 100 T4i -> ZKDY390200TH10001]

1	2.1520.043.0	1	oil seal 85 x 110 x 12
---	--------------	---	------------------------



9\_52636\_03\_0-A-001



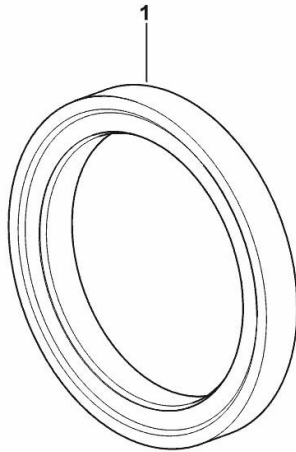
**WATERPROOF OIL SEAL FOR PTO WITH REMOVABLE OUTPUT SHAFTS**

Fig.	P/n	QTY	Name
------	-----	-----	------

**Notes:**

[XM.K 100 T4i -> ZKDY390200TH10001]

1	2.1529.183.0	1	special oil seal
---	--------------	---	------------------



9\_Y8136\_04\_0-A-001

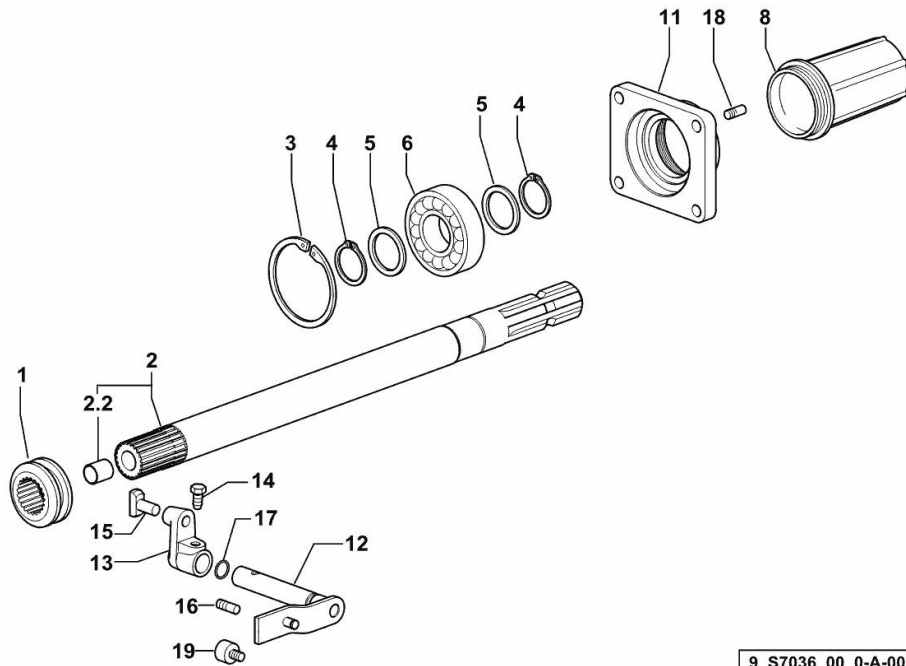
**P.T.O. - SYNCHRONIZED**

Fig.	P/n	QTY	Name
------	-----	-----	------

**Notes:**

[XM.K 100 T4i -> ZKDY390200TH10001]

1	0.255.3469.0	1	sleeve
2	0.255.3471.3/30	1	reduction unit shaft
2.2	2.1559.023.0/10	1	special bushing 15.8x19x20
3	2.1411.032.1	1	circlip 80
4	2.1410.014.1	2	circlip 35
5	2.1599.874.0	2	washer 35 x 45 x 3.0
6	2.2060.011.0	1	ball bearing 35 x 80 x 21
8	0.154.3655.0/10	1	guard
11	0.255.3150.0/20	1	cover
12	0.255.3468.2/20	1	lever
13	0.255.3470.0	1	lever
14	2.0399.019.1	1	screw m 8 p.1 x 16
15	0.001.5945.0/10	1	shoe
16	2.0439.002.1	1	stud bolt m 8 p.1.25 x 20
17	2.1530.033.0	1	oil seal 13.10x2.62
18	2.0432.155.7	4	stud bolt m 10 p.1.5 / p. 1.25 x 25
19	2.0239.003.2	1	screw



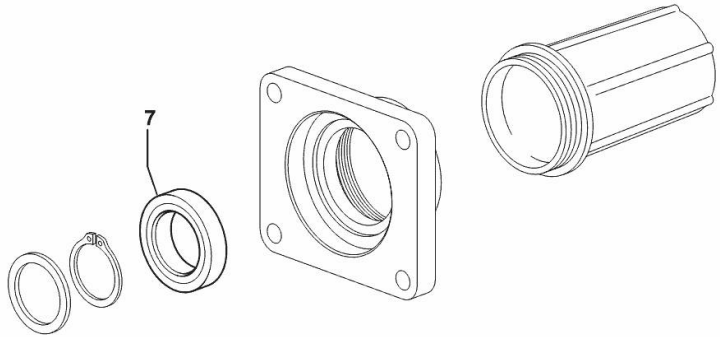
**P.T.O. - SYNCHRONIZED - WITH STANDARD SEALS**

Fig.	P/n	QTY	Name
------	-----	-----	------

**Notes:**

[XM.K 100 T4i -> ZKDY390200TH10001]

7	2.1520.017.0	1	oil seal 35x55x11
---	--------------	---	-------------------



9\_52636\_04\_0-A-001

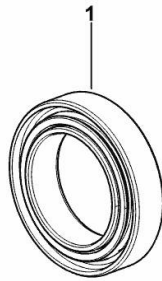
**WATERPROOF OIL SEAL FOR GROUND SPEED PTO**

Fig.	P/n	QTY	Name
------	-----	-----	------

**Notes:**

[XM.K 100 T4i -> ZKDY390200TH10001]

1	2.1529.107.0	1	special oil seal 35x55x12.5
---	--------------	---	-----------------------------



9\_Y8136\_05\_0-A-001

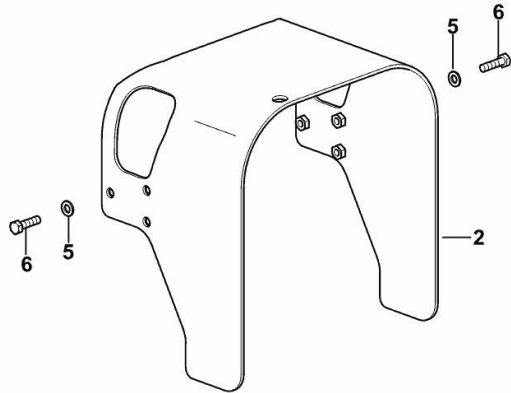
**GUARD PLATE**

Fig.	P/n	QTY	Name
------	-----	-----	------

**Notes:**

[XM.K 100 T4i -> ZKDY390200TH10001]

2	0.019.5731.3/10	1	guard
5	2.1475.102.2	6	washer 8.4 x 16
6	2.0112.211.2	6	screw m 8 p.1.25 x 30



9\_W7331\_30\_0-B-001

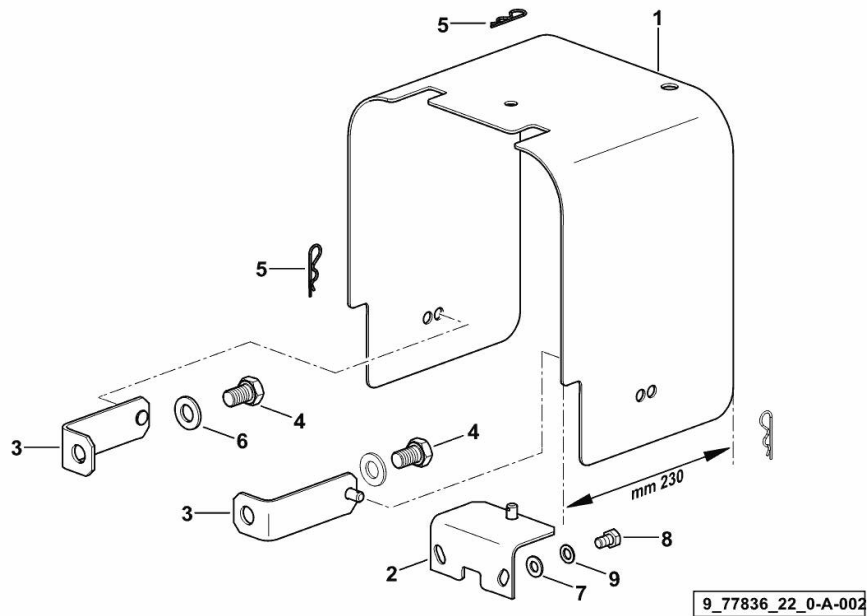
**P.T.O. SHAFT PROTECTOR REAR**

Fig.	P/n	QTY	Name
------	-----	-----	------

**Notes:**

[XM.K 100 T4i -> ZKDY390200TH10001]

1	0.445.3650.0/70	1	small guard
2	0.255.3668.2/30	1	square
3	0.255.3669.2/10	2	square
4	2.0112.609.2	2	screw m 16 p.2 x 25
5	2.1699.180.2	3	pin
6	2.1475.006.2	2	spring washer 16
7	2.1310.006.2	2	flat washer 10.5x21
8	2.0112.305.2	2	screw m 10 p.1.5 x 16
9	2.1470.006.2	2	lock washer 10

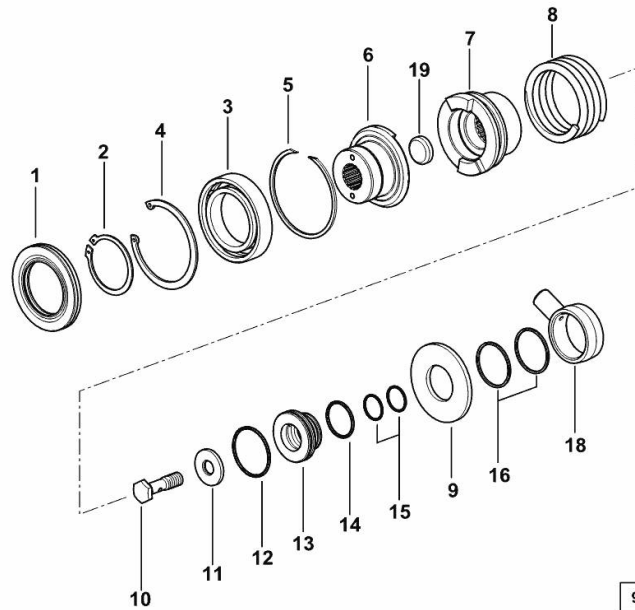


**4WD - ELECTROHYDRAULIC ENGAGEMENT CONTROL**

Fig.	P/n	QTY	Name
------	-----	-----	------

**Notes:**

[XM.K 100 T4i -> ZKDY390200TH10001]



1	0.008.4624.0	1	special oil seal 60x95x10
2	2.1410.024.1	1	circlip Ø 60 mm
3	2.2030.013.0	1	ball bearing 60x95x18
4	2.1411.038.1	1	circlip 95
5	2.1429.072.0	1	shoulder ring
6	0.013.9291.0/10	1	sleeve
7	0.013.9292.0	1	sleeve
8	2.4019.785.1/20	1	spring
9	2.1599.888.0/10	1	slewing ring 40x87x5.5
10	2.0399.306.0	1	screw
11	2.1499.226.0	1	washer 15x40x4
12	2.1530.125.0	1	oil seal 50.47x2.62
13	0.013.9295.0	1	ring
14	2.1530.095.0	1	oil seal 36.14x2.62
15	2.1531.066.0	2	oil seal 25.07x2.62
16	2.1569.109.0/10	2	gasket 46 x 50 x 2.0
18	0.008.4309.0/10	1	manifold
19	2.3171.012.4	1	plug Ø 30

Thank you so much for reading.  
Please click the “Buy Now!”  
button below to download the  
complete manual.



After you pay.

You can download the most  
perfect and complete manual in  
the world immediately.

Our support email:

[ebooklibonline@outlook.com](mailto:ebooklibonline@outlook.com)