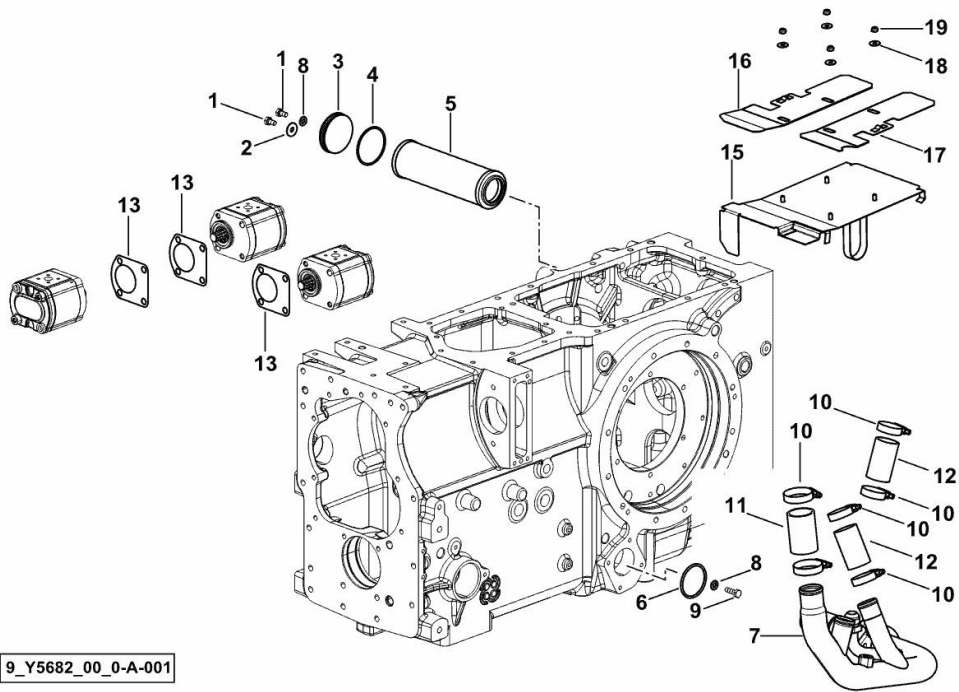


SUCTION HYDRAULIC SYSTEM

Fig.	P/n	QTY	Name
------	-----	-----	------

Notes:

- FOR TYPES WITH 6-WAY REMOTE SPOOL VALVE WITH FLOW REGULATOR [XM.K 110 T4i -> ZKDY510200TH10001]



9_Y5682_00_0-A-001

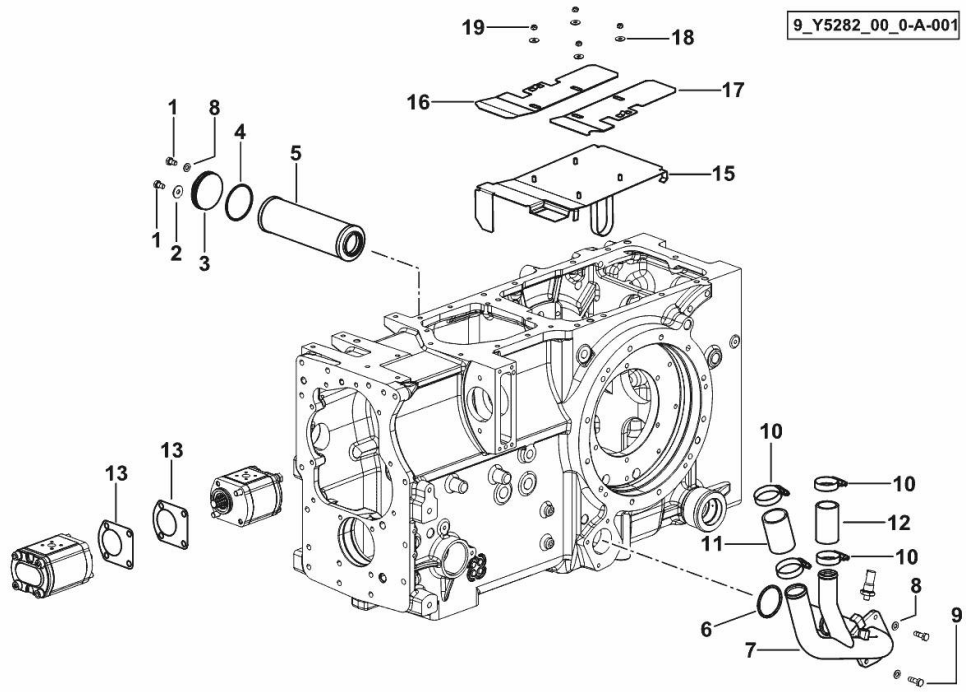
1	2.0112.204.2	3	screw m 8 p.1.25x14
2	2.1312.004.3	2	washer 8,4x24x2
3	0.013.8789.0/10	1	cover
4	2.1532.157.0	1	ring 64.77x2.62
5	2.4419.795.0	1	hydr.oil filter elem.
6	2.1532.138.0	1	oil seal 55.56x3.53
7	0.020.8007.3	1	tube
8	2.1310.004.2	4	flat washer 8.4x17
9	2.0112.209.2	3	screw m 8 p 1.25 x 25
10	2.6851.004.0	6	clamp Ø 32/50
11	2.3213.240.0	1	sleeve
12	2.3213.234.0	2	sleeve Ø 34, L 70
13	0.9104.250.0/10	3	gasket
15	0.020.8049.3	1	guard
16	0.020.1673.2/10	1	plate dx/rh/re
17	0.020.1674.2/10	1	plate sx/lh/li
18	2.1312.003.2	4	washer 6
19	2.1121.003.2	4	self-locking nut

SUCTION HYDRAULIC SYSTEM

Fig.	P/n	QTY	Name
------	-----	-----	------

Notes:

[XM.K 110 T4i -> ZKDY510200TH10001]



1	2.0112.204.2	3	screw m 8 p.1.25x14
2	2.1312.004.3	2	washer 8,4x24x2
3	0.013.8789.0/10	1	cover
4	2.1532.157.0	1	ring 64.77x2.62
5	2.4419.484.0	1	oil filter
6	2.1532.138.0	1	oil seal 55.56x3.53
7	0.015.1259.3	1	tube
8	2.1310.004.2	5	flat washer 8.4x17
9	2.0112.209.2	4	screw m 8 p 1.25 x 25
10	2.6851.004.0	4	clamp Ø 32/50
11	2.3213.240.0	1	sleeve
12	2.3213.234.0	1	sleeve Ø 34, L 70
13	0.9104.250.0/10	2	gasket
15	0.020.8049.3	1	guard
16	0.020.1673.2/10	1	plate dx/rh/re
17	0.020.1674.2/10	1	plate sx/lh/li
18	2.1312.003.2	4	washer 6
19	2.1121.003.2	4	self-locking nut

XM.K 110 T4i -> ZKDY510200TH10001

Section: H0 - HYDRAULIC AND PNEUMATIC SYSTEM|

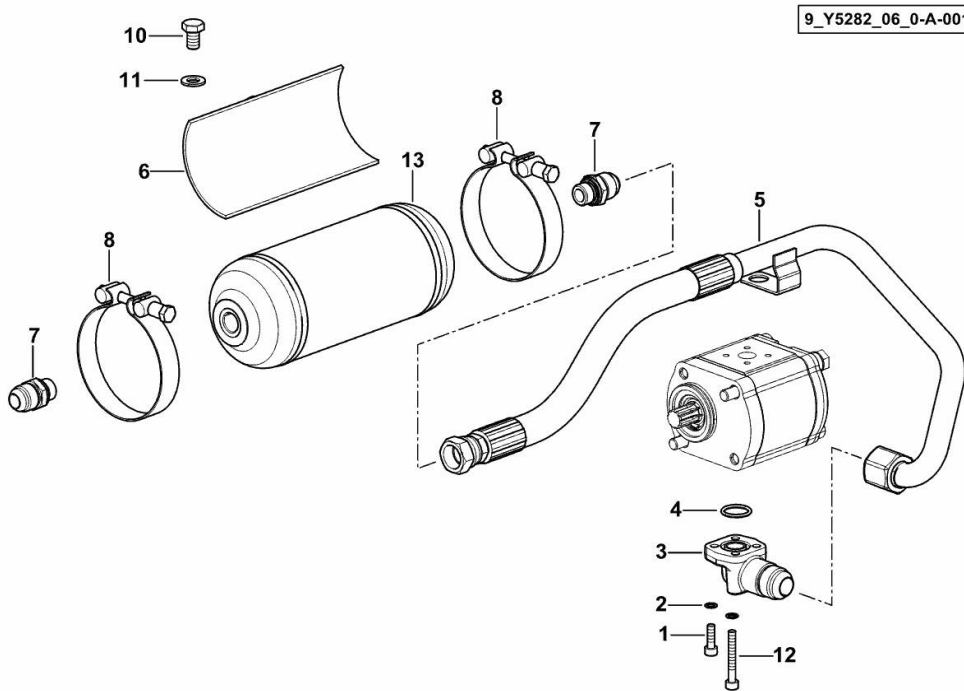
Ref: H0.01.32 (1)

POWER STEERING OIL FEED HYDRAULIC SYSTEM

Fig.	P/n	QTY	Name
------	-----	-----	------

Notes:

[XM.K 110 T4i -> ZKDY510200TH10001]



1	2.0312.106.2	2	screw m 6 p.1 x 20
2	2.1480.012.2	4	washer 6, d128
3	0.012.7294.0/10	1	flange
4	2.1531.052.0	1	oil seal 20.29 x 2.62
5	0.015.1445.3/20	1	tube
6	0.020.8756.2	1	bracket
7	2.3249.141.2	2	pipe fitting 7/8 JIC-M18
8	0.164.8157.3/20	2	fascia Ø 97
10	2.0112.305.2	2	screw m 10 p.1.5 x 16
11	2.1475.003.2	2	washer 10
12	2.0312.115.2	2	screw m 6 p.1x45
13	0.019.0172.0/10	1	vibration damper WEBER

XM.K 110 T4i -> ZKDY510200TH10001

Section: H0 - HYDRAULIC AND PNEUMATIC SYSTEM]

Ref: H0.01.33 (1)

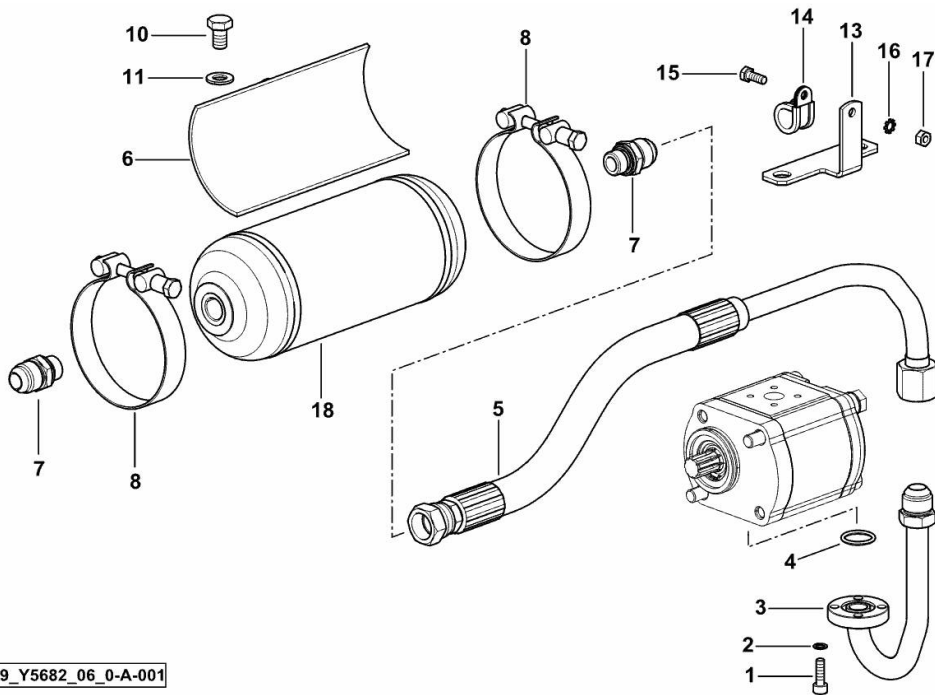
POWER STEERING OIL FEED HYDRAULIC SYSTEM

Fig.	P/n	QTY	Name
------	-----	-----	------

Notes:

- 60 LT ECO [XM.K 110 T4i -> ZKDY510200TH10001]

1	2.0312.106.2	4	screw m 6 p.1 x 20
2	2.1480.012.2	4	washer 6, d128
3	0.017.5852.3	1	tube
4	2.1531.052.0	1	oil seal 20.29 x 2.62
5	0.017.5805.3	1	tube
6	0.020.8756.2	1	bracket
7	2.3249.141.2	2	pipe fitting 7/8 JIC-M18
8	0.164.8157.3/20	2	fascia Ø 97
10	2.0112.305.2	2	screw m 10 p.1.5 x 16
11	2.1475.003.2	2	washer 10
13	0.017.9694.0	1	bracket
14	2.6839.066.0/10	1	clamp 16
15	2.0112.005.2	1	screw m 6 p.1 x 16
16	2.1470.002.2	1	lock washer 6
17	2.1011.103.2	1	nut m 6 p.1
18	0.019.0172.0/10	1	vibration damper WEBER



9_Y5682_06_0-A-001

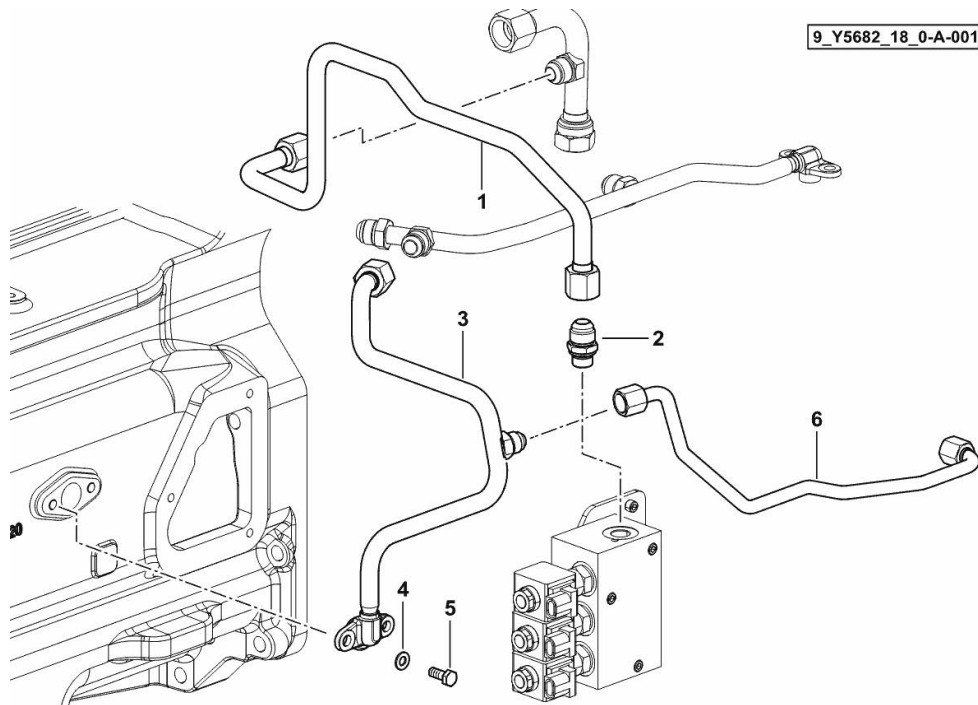
HYDRAULIC SYSTEM H-M-L

Fig.	P/n	QTY	Name
------	-----	-----	------

Notes:

[XM.K 110 T4i -> ZKDY510200TH10001]

1	0.020.8541.3	1	tube
2	2.3249.141.2	1	pipe fitting 7/8 JIC-M18
3	0.020.7845.3	1	tube
4	2.1310.004.2	2	flat washer 8.4x17
5	2.0112.207.2	2	screw m 8 p 1.25 x 20
6	0.020.7847.3	1	tube



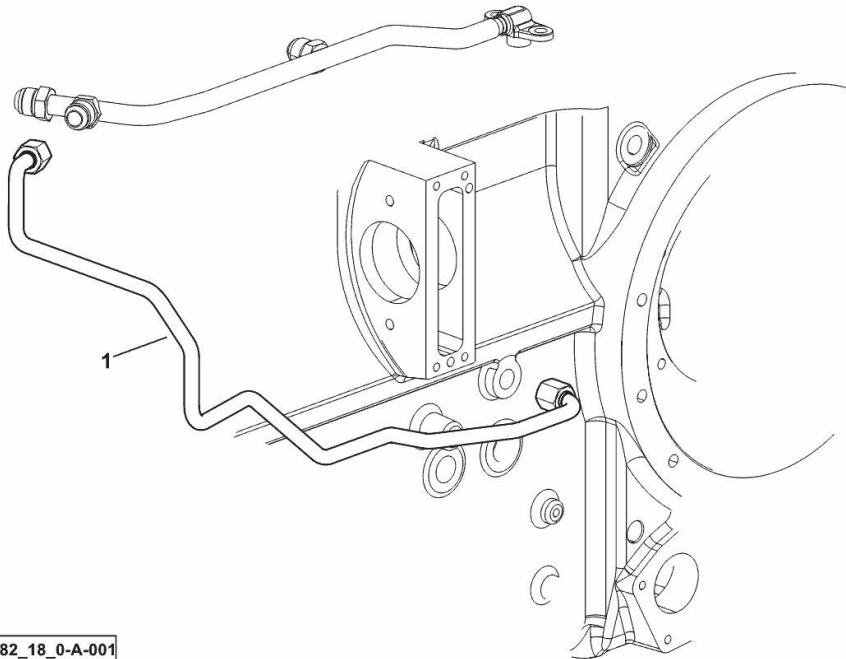
SECONDARY SHAFT LUBRICATION SYSTEM

Fig.	P/n	QTY	Name
------	-----	-----	------

Notes:

[XM.K 110 T4i -> ZKDY510200TH10001]

1	0.020.7575.3	1	tube
---	--------------	---	------



9_Y5282_18_0-A-001

XM.K 110 T4i -> ZKDY510200TH10001

Section: H0 - HYDRAULIC AND PNEUMATIC SYSTEM]

Ref: H0.01.36 (2)

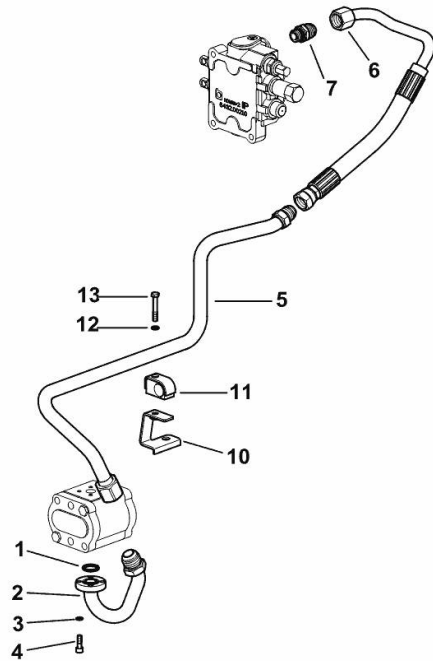
SYSTEM FROM HYDRAULIC PUMP TO 4-WAY DIRECTIONAL CONTROL VALVE

Fig.	P/n	QTY	Name
------	-----	-----	------

Notes:

[XM.K 110 T4i -> ZKDY510200TH10001]

1	2.1531.052.0	1	oil seal 20.29 x 2.62
2	0.015.1442.3	1	tube
3	2.1480.012.2	4	washer 6, d128
4	2.0312.106.2	4	screw m 6 p.1 x 20
5	0.015.1443.3/10	1	tube
6	0.014.9057.3	1	tube
7	2.3249.141.2	1	pipe fitting 7/8 JIC-M18
10	0.015.4754.3	1	bracket
11	2.3320.111.0	1	terminal Ø 20
12	2.1470.002.2	1	lock washer 6
13	2.0112.015.2	1	screw m 6 p.1x40



9_H1582_42_0-A-002

XM.K 110 T4i -> ZKDY510200TH10001

Section: H0 - HYDRAULIC AND PNEUMATIC SYSTEM]

Ref: H0.01.45 (2)

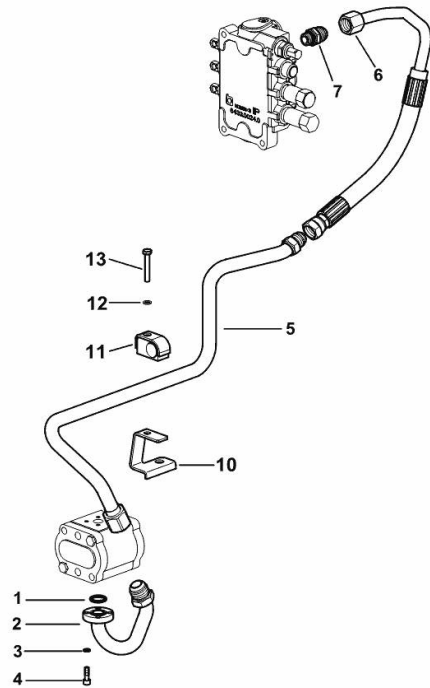
SYSTEM FROM HYDRAULIC PUMP TO 6-WAY DIRECTIONAL CONTROL VALVE

Fig.	P/n	QTY	Name
------	-----	-----	------

Notes:

- FOR TYPES WITHOUT OIL FLOW CONTROL [XM.K 110 T4i -> ZKDY510200TH10001]

1	2.1531.052.0	1	oil seal 20.29 x 2.62
2	0.015.1442.3	1	tube
3	2.1480.012.2	4	washer 6, d128
4	2.0312.106.2	4	screw m 6 p.1 x 20
5	0.015.1443.3/10	1	tube
6	0.014.9058.3	1	tube
7	2.3249.141.2	1	pipe fitting 7/8 JIC-M18
10	0.015.4754.3	1	bracket
11	2.3320.111.0	1	terminal Ø 20
12	2.1470.002.2	1	lock washer 6
13	2.0112.015.2	1	screw m 6 p.1x40



9_H1582_44_0-A-002

XM.K 110 T4i -> ZKDY510200TH10001

Section: H0 - HYDRAULIC AND PNEUMATIC SYSTEM]

Ref: H0.01.46 (1)

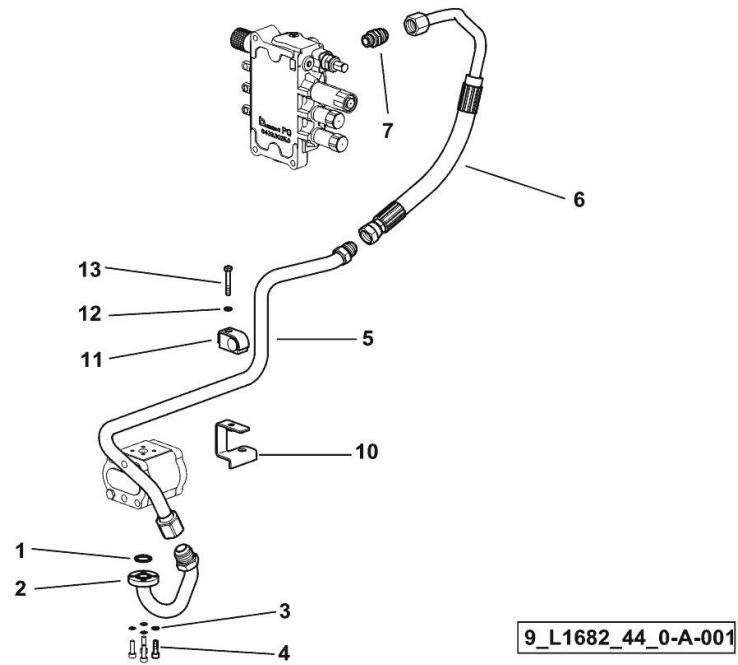
SYSTEM FROM HYDRAULIC PUMP TO 6-WAY DIRECTIONAL CONTROL VALVE

Fig.	P/n	QTY	Name
------	-----	-----	------

Notes:

[XM.K 110 T4i -> ZKDY510200TH10001]

1	2.1531.052.0	1	oil seal 20.29 x 2.62
2	0.015.1442.3	1	tube
3	2.1480.012.2	4	washer 6, d128
4	2.0312.106.2	4	screw m 6 p.1 x 20
5	0.015.1443.3/10	1	tube
6	0.016.0895.3	1	tube
7	2.3249.141.2	1	pipe fitting 7/8 JIC-M18
10	0.015.4754.3	1	bracket
11	2.3320.111.0	1	terminal Ø 20
12	2.1470.002.2	1	lock washer 6
13	2.0112.015.2	1	screw m 6 p.1x40



XM.K 110 T4i -> ZKDY510200TH10001

Section: H0 - HYDRAULIC AND PNEUMATIC SYSTEM]

Ref: H0.01.47 (1)

SYSTEM FROM HYDRAULIC PUMP TO 6-WAY DIRECTIONAL CONTROL VALVE

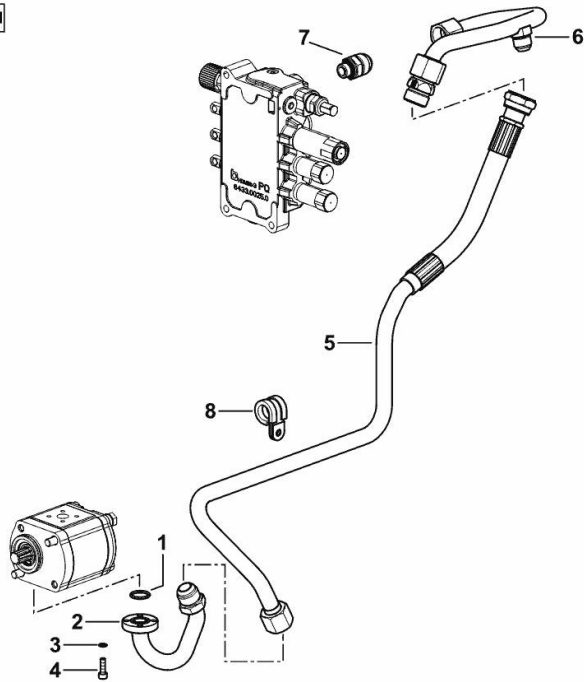
Fig.	P/n	QTY	Name
------	-----	-----	------

Notes:

- 60 LT ECO [XM.K 110 T4i -> ZKDY510200TH10001]

1	2.1531.052.0	1	oil seal 20.29 x 2.62
2	0.015.1442.3	1	tube
3	2.1480.012.2	4	washer 6, d128
4	2.0312.106.2	4	screw m 6 p.1 x 20
5	0.020.7886.3	1	tube
6	0.020.8797.4	1	tube
7	2.3249.148.2	1	pipe fitting m 18 - 1/16" JIC
8	2.6839.051.0	1	clamp 20/20

9_Y5282_44_0-A-001



XM.K 110 T4i -> ZKDY510200TH10001

Section: H0 - HYDRAULIC AND PNEUMATIC SYSTEM]

Ref: H0.01.50 (2)

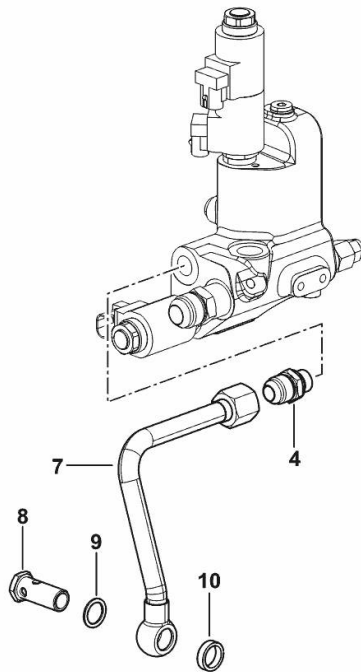
HYDRAULIC SYSTEM - FOR 2-WAY AUXILIARY CONTROL VALVE

Fig.	P/n	QTY	Name
------	-----	-----	------

Notes:

- FOR MODELS WITH FRONT LIFT [XM.K 110 T4i -> ZKDY510200TH10001]

4	2.3249.401.2	1	pipe fitting 7/8 JIC-M18
7	0.018.5551.3	1	tube
8	2.3335.055.2	1	pipe union m 18 p.1.5
9	2.1560.014.0	1	washer 18.2 x 24
10	2.1569.158.0/10	1	gasket 18.2 x 24 x 6.5



9_Y5288_11_0-B-002

XM.K 110 T4i -> ZKDY510200TH10001

Section: H0 - HYDRAULIC AND PNEUMATIC SYSTEM]

Ref: H0.01.53 (1)

HYDRAULIC SYSTEM - FOR 2-WAY AUXILIARY CONTROL VALVE

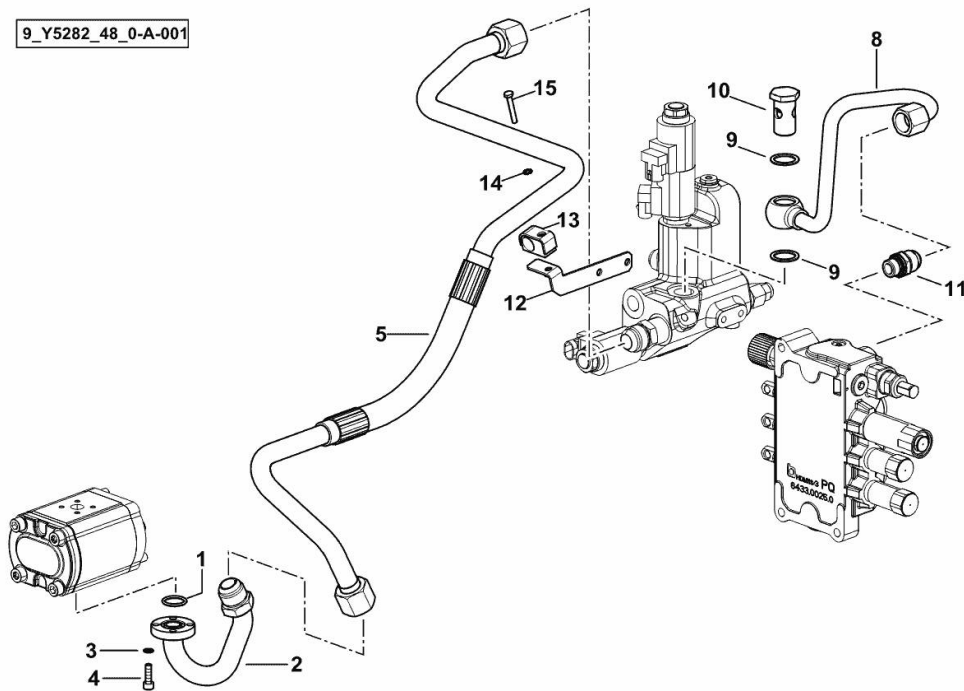
Fig.	P/n	QTY	Name
------	-----	-----	------

Notes:

[XM.K 110 T4i -> ZKDY510200TH10001]

1	2.1531.052.0	1	oil seal 20.29 x 2.62
2	0.015.1442.3	1	tube
3	2.1480.012.2	4	washer 6, d128
4	2.0312.106.2	4	screw m 6 p.1 x 20
5	0.020.7871.3	1	tube
8	0.020.7866.3	1	tube
9	2.1560.018.0	2	gasket 22.2 x 29
10	2.3335.009.2	1	pipe union m 22 p.1.5 x 39
11	2.3249.141.2	1	pipe fitting 7/8 JIC-M18
12	0.021.5065.3	1	bracket
13	2.3320.111.0	1	terminal Ø 20
14	2.1470.002.2	1	lock washer 6
15	2.0112.015.2	1	screw m 6 p.1x40

9_Y5282_48_0-A-001



XM.K 110 T4i -> ZKDY510200TH10001

Section: H0 - HYDRAULIC AND PNEUMATIC SYSTEM]

Ref: H0.01.54 (1)

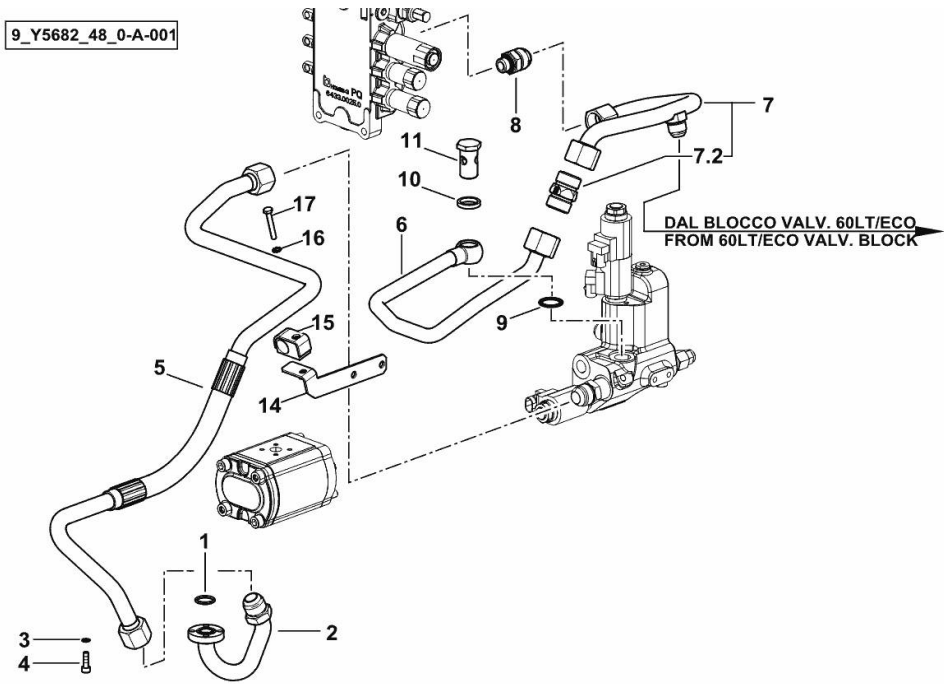
HYDRAULIC SYSTEM - FOR 2-WAY AUXILIARY CONTROL VALVE

Fig.	P/n	QTY	Name
------	-----	-----	------

Notes:

- 60 LT ECO [XM.K 110 T4i -> ZKDY510200TH10001]

1	2.1531.052.0	1	oil seal 20.29 x 2.62
2	0.015.1442.3	1	tube
3	2.1480.012.2	4	washer 6, d128
4	2.0312.106.2	4	screw m 6 p.1 x 20
5	0.020.7871.3	1	tube
6	0.020.8806.3	1	tube
7	0.020.8797.4	1	tube
7.2	2.3729.034.0	1	valve
8	2.3249.148.2	1	pipe fitting m 18 - 1/16" JIC
9	2.1561.112.0	1	gasket Ø 22 -B-
10	2.1569.172.0/10	1	gasket 29x22.2x5
11	2.3335.009.2	1	pipe union m 22 p.1.5 x 39
14	0.021.5065.3	1	bracket
15	2.3320.111.0	1	terminal Ø 20
16	2.1470.002.2	1	lock washer 6
17	2.0112.015.2	1	screw m 6 p.1x40



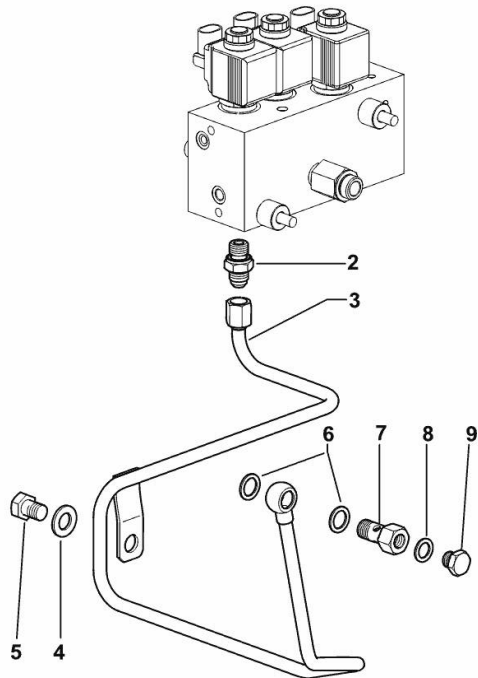
HI-LO HYDRAULIC SYSTEM

Fig.	P/n	QTY	Name
------	-----	-----	------

Notes:

[XM.K 110 T4i -> ZKDY510200TH10001]

2	2.3249.159.2	1	pipe fitting M/M 9/16JIC-M14
3	0.015.1342.3/10	1	tube
4	2.0112.405.2	1	screw m 12 p.1.75x16
5	2.1475.004.7	1	washer 13 x 24
6	2.1560.010.0	2	gasket 14.2 x 20
7	2.3339.860.2/20	1	pipe union m 14 p.1.5
8	2.1560.008.0	1	gasket 12.2 x 18
9	2.3110.402.2	1	plug m 12 p.1.5



9_H1582_18_0-A-002

XM.K 110 T4i -> ZKDY510200TH10001

Section: H0 - HYDRAULIC AND PNEUMATIC SYSTEM]

Ref: H0.01.57 (2)

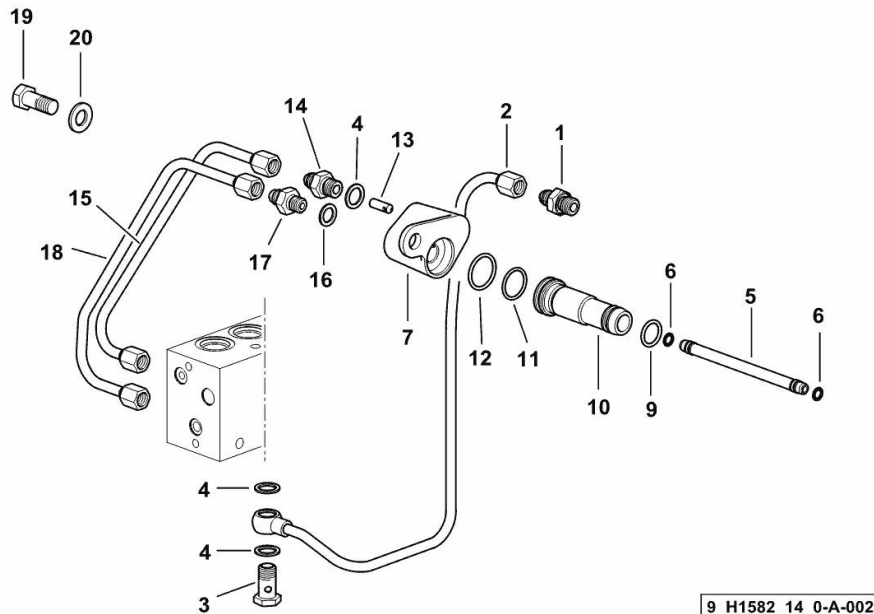
DIFFERENTIAL LOCK / P.T.O. ASSEMBLY

Fig.	P/n	QTY	Name
------	-----	-----	------

Notes:

[XM.K 110 T4i -> ZKDY510200TH10001]

1	2.3249.156.2	1	pipe fitting M/M 1/2 JIC-M14x1.5
2	0.014.7538.3	1	tube
3	2.3335.006.2	1	pipe union m 14 p.1.5X26
4	2.1560.010.0	3	gasket 14.2 x 20
5	0.008.2727.0/40	1	tube
6	2.1531.012.0	2	oil seal 6.75 x 1.78
7	0.006.6168.3/10	1	flange
9	2.1531.043.0	1	oil seal 17.13x2.62
10	0.008.2726.0/20	1	tube
11	2.1531.048.0	1	oil seal 18.72x2.62
12	2.1531.066.0	1	oil seal 25.07x2.62
13	0.010.1827.0/10	1	ferrule
14	2.3249.026.2/10	1	pipe fitting m 14x1.5 - 1/2"-20jic
15	0.014.7561.3	1	tube
16	2.1560.008.0	1	gasket 12.2 x 18
17	2.3249.229.2	1	pipe fitting
18	0.014.7540.3	1	tube
19	2.0112.411.2	1	screw m 12 p.1.75 x 30
20	2.1310.007.2	1	flat washer 13 x 24



XM.K 110 T4i -> ZKDY510200TH10001

Section: H0 - HYDRAULIC AND PNEUMATIC SYSTEM]

Ref: H0.01.59 (1)

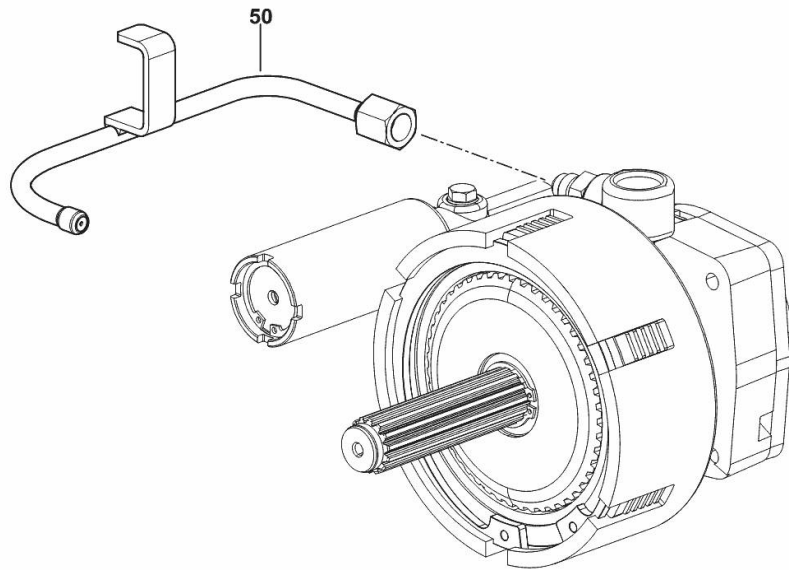
**LUBRICATION LINE FOR ELECTRO HYDRAULICALLY CONTROLLED
PTO HYDRAULIC CLUTCH**

Fig.	P/n	QTY	Name
------	-----	-----	------

Notes:

[XM.K 110 T4i -> ZKDY510200TH10001]

50	0.020.7922.3	1	tube
----	--------------	---	------



9_Y5239_00_0-B-001

Thank you so much for reading.
Please click the “Buy Now!”
button below to download the
complete manual.



After you pay.

You can download the most
perfect and complete manual in
the world immediately.

Our support email:

ebooklibonline@outlook.com