

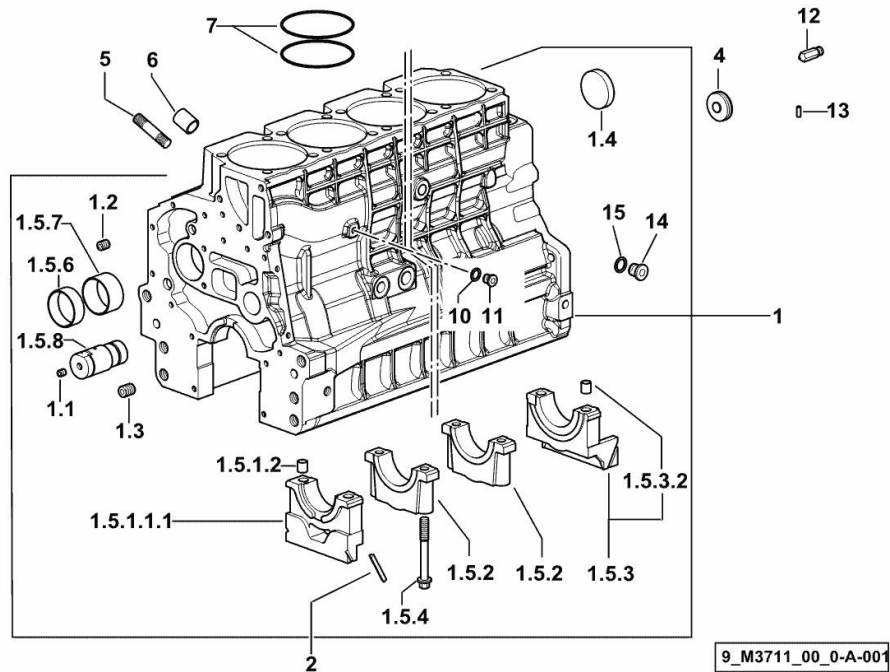
Section: B0 - ENGINE

CRANKCASE

| Fig. | P/n | QTY | Name |
|------|-----|-----|------|
|------|-----|-----|------|

Notes:
[XT-105 -> 10001]

| | | | |
|-----------|-----------------|----|------------------------------|
| 1 | 0.013.0356.4/40 | 1 | crankcase |
| 1.1 | 2.3130.001.1 | 14 | plug 1/8" gas |
| 1.2 | 2.3130.002.1 | 2 | plug 1/4" gas |
| 1.3 | 2.3130.003.1 | 8 | plug 3/8" gas |
| 1.4 | 2.3179.012.0 | 1 | plug 60 |
| 1.5.1.1.1 | 0.065.1112.7/10 | 1 | support |
| 1.5.1.2 | 2.1699.165.0 | 1 | bush 12.3x15x16 |
| 1.5.2 | 0.065.1114.0/10 | 5 | support |
| 1.5.3 | 0.007.0848.3/20 | 1 | support |
| 1.5.3.2 | 2.1699.165.0 | 1 | bush 12.3x15x16 |
| 1.5.4 | 0.065.1117.0 | 14 | screw m 12 x 100 |
| 1.5.6 | 0.065.1140.0 | 6 | special bushing 59X55X20 |
| 1.5.7 | 0.065.1141.0 | 1 | special bushing 59X55X30 |
| 1.5.8 | 0.014.1340.0/10 | 1 | pin mm 85 |
| 2 | 0.066.1152.0/10 | 4 | gasket |
| 4 | 2.3199.312.2/20 | 1 | plug m 35x1.5x9.5 |
| 5 | 2.0439.273.7 | 12 | stud bolt m 8 |
| 6 | 2.1559.188.2 | 6 | bush 11.4 x 14 x16 |
| 7 | 2.1539.259.0 | 12 | special oil seal 107.62x2.62 |
| 10 | 2.1560.010.0 | 1 | gasket 14.2 x 20 |
| 11 | 2.3199.292.0 | 1 | plug 1/4" gas |
| 12 | 0.013.4946.0/10 | 1 | sprayer nozzle |
| 13 | 2.1549.154.2 | 6 | bush 4.8x5.8x16 |
| 14 | 2.3120.101.0 | 1 | plug m 18 p.1.5 |
| 15 | 2.1560.014.0 | 1 | washer 18.2 x 24 |



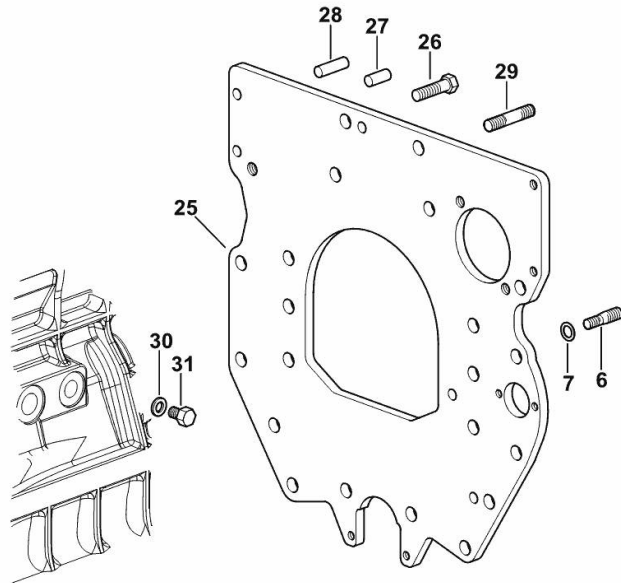
MONOBLOC ENGINE-GEARBOX CONNECTING FLANGE

| Fig. | P/n | QTY | Name |
|------|-----|-----|------|
|------|-----|-----|------|

Notes:

[XT-105 -> 10001]

| | | | |
|----|-----------------|---|-----------------------------------|
| 6 | 2.0439.250.7 | 1 | stud bolt m 12 / m 10 x 30 |
| 7 | 0.011.9294.0/10 | 1 | bush |
| 25 | 0.010.7201.0 | 1 | flange |
| 26 | 2.0112.511.2 | 8 | screw m 14 p.2 x 30 |
| 27 | 2.1651.912.0 | 2 | cylindrical plug 12x28 |
| 28 | 2.1651.917.0 | 1 | cylindrical plug 12x40 |
| 29 | 2.0432.257.7 | 1 | stud bolt m 12 p.1.75 - 1.25 x 30 |
| 30 | 2.1560.017.0 | 1 | gasket 22.2 x 27 |
| 31 | 2.3120.002.4 | 1 | plug m 22 x 1.5 |



9_32411_02_0-A-001

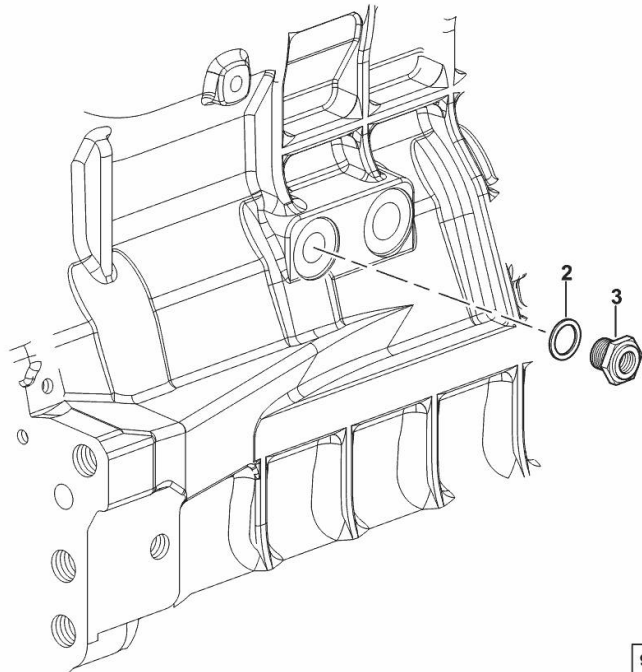
FITTING FOR ENGINE OIL PRESSURE SWITCH

| Fig. | P/n | QTY | Name |
|------|-----|-----|------|
|------|-----|-----|------|

Notes:

[XT-105 -> 10001]

| | | | |
|---|-----------------|---|--------------------------------|
| 2 | 2.1560.014.0 | 1 | washer 18.2 x 24 |
| 3 | 2.3339.353.2/20 | 1 | pipe fitting 12 p.1.5-18 p.1.5 |



9_33615_03_0-B-001

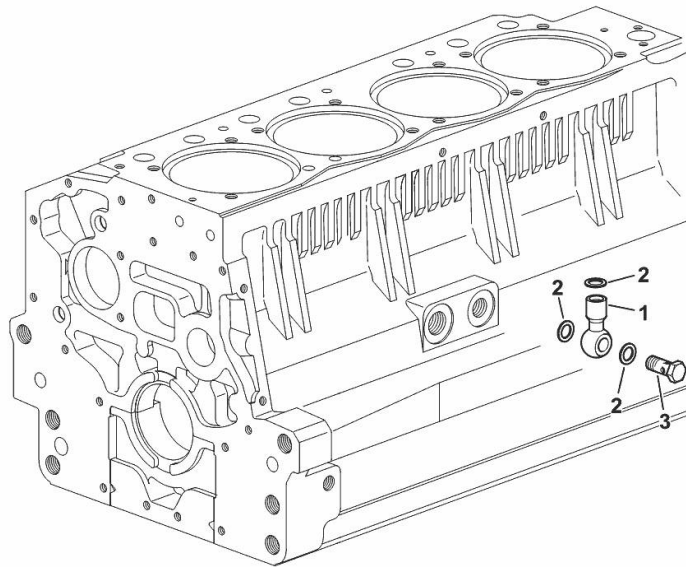
FITTING FOR ENGINE OIL PRESSURE SWITCH

| Fig. | P/n | QTY | Name |
|------|-----|-----|------|
|------|-----|-----|------|

Notes:

[XT-105 -> 10001]

| | | | |
|---|--------------|---|-------------------------|
| 1 | 2.3249.014.2 | 1 | pipe fitting m 12 p.1.5 |
| 2 | 2.1560.008.0 | 3 | gasket 12.2 x 18 |
| 3 | 2.3335.052.2 | 1 | pipe union m 12 p.1.5 |



9_32315_07_0-A-001

Section: B0 - ENGINE

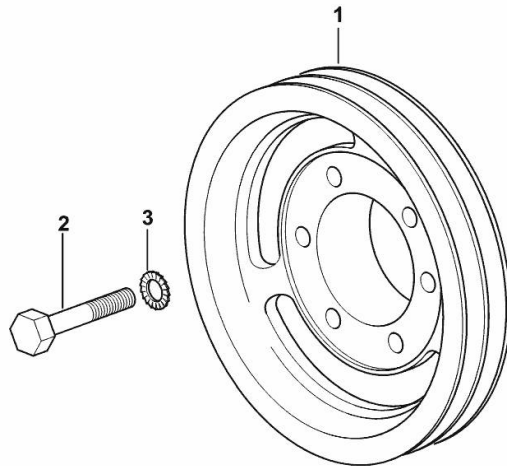
CRANKSHAFT PULLEY

| Fig. | P/n | QTY | Name |
|------|-----|-----|------|
|------|-----|-----|------|

Notes:

[XT-105 -> 10001]

| | | | |
|---|-----------------|---|---------------------|
| 1 | 0.007.0962.0/30 | 1 | pulley |
| 2 | 2.0112.322.2 | 6 | screw m 10 p.1.5x65 |
| 3 | 2.1470.006.2 | 6 | lock washer 10 |



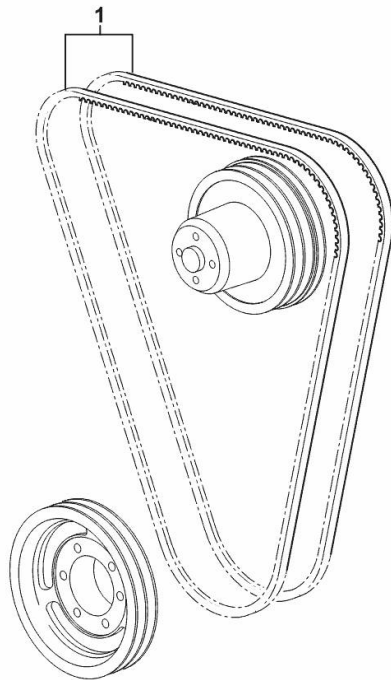
9_33712_01_0-A-001

COOLANT PUMP AND ALTERNATOR DRIVEBELT

| Fig. | P/n | QTY | Name |
|------|-----|-----|------|
|------|-----|-----|------|

Notes:
[XT-105 -> 10001]

| | | | |
|---|--------------|---|--------------------|
| 1 | 2.4119.099.0 | 2 | belt AV 13x1437 mm |
|---|--------------|---|--------------------|



9_33717_01_0-A-001

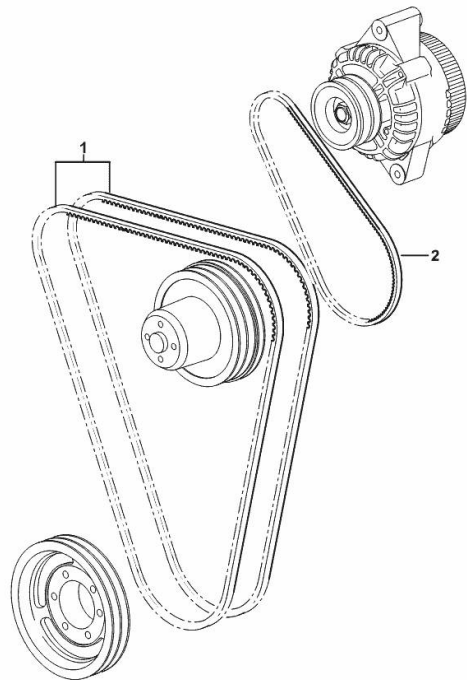
COOLANT PUMP AND ALTERNATOR DRIVEBELT

| Fig. | P/n | QTY | Name |
|------|-----|-----|------|
|------|-----|-----|------|

Notes:

- FOR TRACTORS WITH AIR CONDITIONING [XT-105 -> 10001]

| | | | |
|---|--------------|---|----------------------|
| 1 | 0.007.0967.0 | 2 | belt AV 12.7x1470 mm |
| 2 | 2.4119.134.0 | 1 | belt AV 10x794 mm |



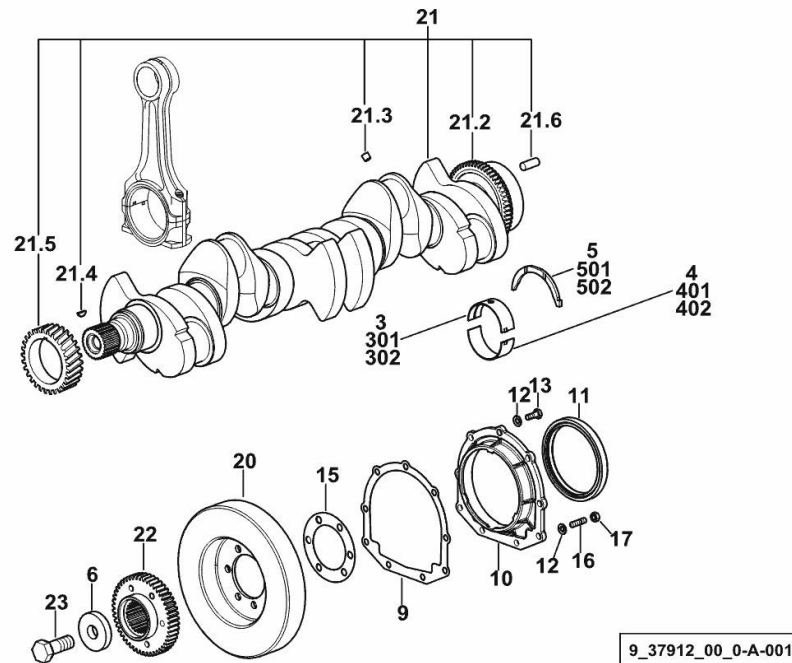
9_M9917_02_0-A-001

CRANKSHAFT

| Fig. | P/n | QTY | Name |
|------|-----|-----|------|
|------|-----|-----|------|

Notes:

[XT-105 -> 10001]



| | | | |
|------|-----------------|---|---------------------------------|
| 3 | 0.065.1215.0/10 | 7 | main half bushing STANDARD |
| 4 | 0.065.1216.0/10 | 7 | main half bushing STANDARD |
| 5 | 0.065.1218.0 | 4 | shim STANDARD |
| 6 | 2.1599.524.7 | 1 | washer 21x60x12 |
| 9 | 0.065.1254.0/20 | 1 | gasket |
| 10 | 0.007.0851.0/10 | 1 | cover |
| 11 | 2.1529.073.0 | 1 | special oil seal 110x130x13 |
| 12 | 2.1475.002.2 | 9 | conical washer 8 |
| 13 | 2.0112.207.2 | 7 | screw m 8 p 1.25 x 20 |
| 15 | 2.1589.137.0 | 2 | shoulder ring 71x110x1 |
| 16 | 2.0432.003.7 | 2 | stud bolt m 8 p.1.25 / p.1 x 20 |
| 17 | 2.1011.105.2 | 2 | nut m 8 p.1.25 |
| 20 | 0.009.3704.3 | 1 | antivibration pulley |
| 21 | 0.010.4320.3/30 | 1 | crankshaft |
| 21.2 | 0.007.0855.0/10 | 1 | gear |
| 21.3 | 2.3130.001.1 | 6 | plug 1/8" gas |
| 21.4 | 2.1720.006.0 | 1 | key 4x6.5 |
| 21.5 | 0.007.1188.0/30 | 1 | gear Z = 29 |
| 21.6 | 2.1651.915.0 | 1 | pin 12x35 |
| 22 | 0.011.2206.0/20 | 1 | hub |
| 23 | 2.0399.144.7/10 | 1 | screw m 20 p.1.5x51 |
| 301 | 0.065.1215.7 | | main half bushing - mm 0.25 |
| 302 | 0.065.1215.8 | | main half bushing - mm 0.50 |
| 401 | 0.065.1216.7 | | main half bushing - mm 0.25 |
| 402 | 0.065.1216.8 | | main half bushing - mm 0.50 |
| 501 | 0.065.1218.7 | | shim + mm 0.10 |
| 502 | 0.065.1218.8 | | shim + mm 0.15 |

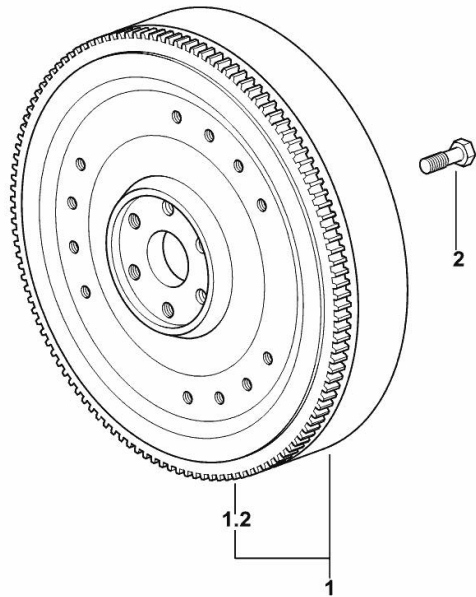
ENGINE FLYWHEEL

| Fig. | P/n | QTY | Name |
|------|-----|-----|------|
|------|-----|-----|------|

Notes:

[XT-105 -> 10001]

| | | | |
|-----|-----------------|---|----------------------|
| 1 | 0.010.8727.3 | 1 | flywheel |
| 1.2 | 0.065.1242.0 | 1 | crown wheel Z = 123 |
| 2 | 2.0119.174.0/10 | 6 | screw m 12 p.1.25x45 |



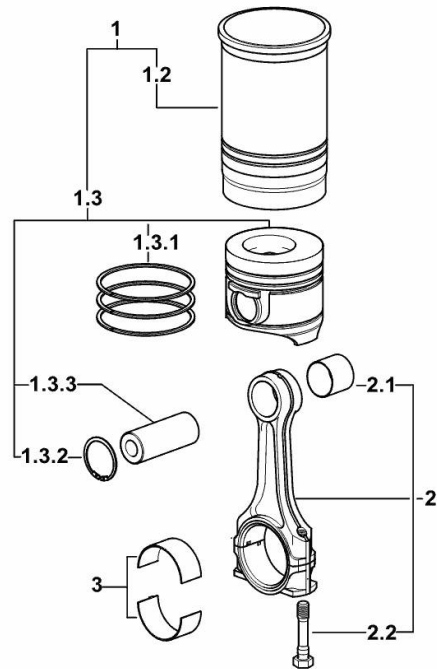
9_32312_03_0-A-001

CYLINDER - PISTON - CONNECTING ROD

| Fig. | P/n | QTY | Name |
|------|-----|-----|------|
|------|-----|-----|------|

Notes:

[XT-105 -> 10001]



9_M5312_01_M-A-001

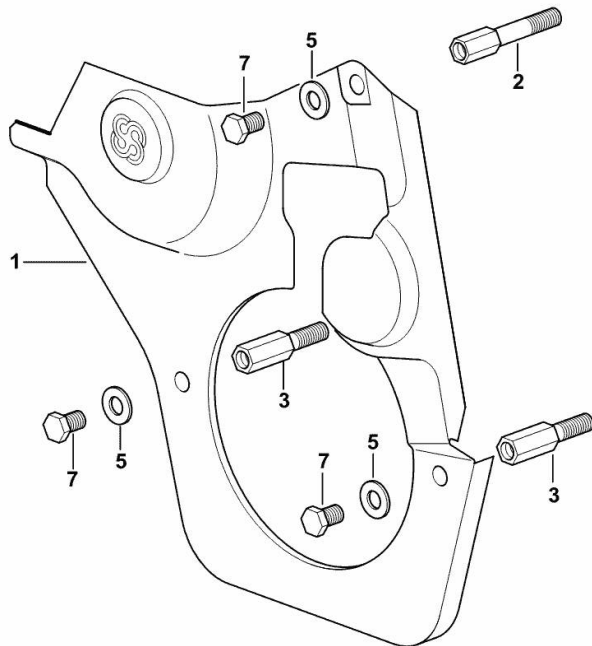
| | | | |
|-------|-----------------|----|--|
| 1 | 0.082.0065.A | 6 | cyl. piston assembly "A" - CLASS A |
| 1 | 0.082.0065.B | 6 | cyl. piston assembly "B" - CLASS B |
| 1.2 | 0.A12.2675.0 | 1 | engine cylinder "A" - CLASS A |
| 1.2 | 0.B12.2675.0 | 1 | engine cylinder "B" - CLASS B |
| 1.3 | 0.082.0060.A | 1 | complete piston "A" - CLASS A |
| 1.3 | 0.082.0060.B | 1 | complete piston "B" - CLASS B |
| 1.3.1 | 0.086.0052.6/10 | 1 | piston ring set |
| 1.3.2 | 2.1411.014.1 | 2 | circlip 35 |
| 1.3.3 | 0.078.1236.0 | 1 | piston pin Ø 18 / Ø 35 / L = mm 86 |
| 2 | 0.078.1220.3/30 | 6 | engine connecting rod |
| 2.1 | 2.1559.114.0/10 | 1 | special bushing |
| 2.2 | 2.0399.213.0 | 2 | screw m 12 p.1.25x61.5 |
| 3 | 0.065.1225.0 | 12 | con.rod half bushing STANDARD - A = 28.75 -> 29.00 |
| 3 | 0.065.1225.7 | 12 | con.rod half bushing - mm 0.25 |
| 3 | 0.065.1225.8 | 12 | con.rod half bushing - mm 0.50 |

GUARD PLATE

| Fig. | P/n | QTY | Name |
|------|-----|-----|------|
|------|-----|-----|------|

Notes:
[XT-105 -> 10001]

| | | | |
|---|-----------------|---|-------------------------------------|
| 1 | 0.007.1262.3/50 | 1 | guard |
| 2 | 0.007.1271.0/10 | 1 | small column m 8 p.1.25 / L = mm 60 |
| 3 | 0.007.1272.0/10 | 2 | small column m 8 p.1.25 / L = mm 50 |
| 5 | 2.1310.004.2 | 3 | flat washer 8.4x17 |
| 7 | 2.0112.203.2 | 3 | screw m 8 p.1.25 x 12 |



9_33011_02_0-A-001

Section: B0 - ENGINE

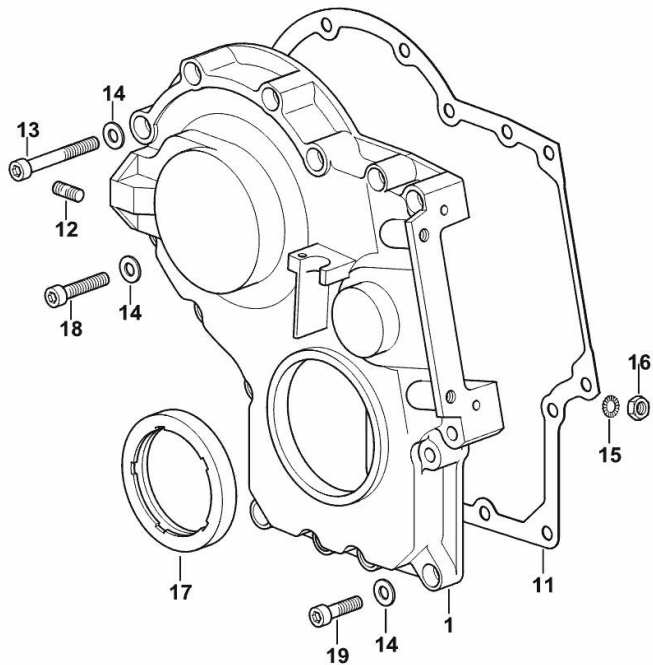
TIMING CASE

| Fig. | P/n | QTY | Name |
|------|-----|-----|------|
|------|-----|-----|------|

Notes:

[XT-105 -> 10001]

| | | | |
|----|-----------------|----|---------------------------------|
| 1 | 0.013.4981.0 | 1 | guard |
| 11 | 0.065.1150.0/30 | 1 | gasket |
| 12 | 2.0432.003.7 | 2 | stud bolt m 8 p.1.25 / p.1 x 20 |
| 13 | 2.0312.219.2 | 4 | screw m 8 p.1.25x65 |
| 14 | 2.1480.014.1 | 15 | washer 8 |
| 15 | 2.1470.004.2 | 4 | lock washer 8 |
| 16 | 2.1011.405.2 | 2 | nut m 8 p.1 |
| 17 | 2.1529.167.0 | 1 | oil seal |
| 18 | 2.0312.214.2 | 3 | screw m 8 p.1.25 x 40 |
| 19 | 2.0312.208.2 | 8 | screw m 8 p.1.25 x 25 |



9_M3711_01_0-A-001

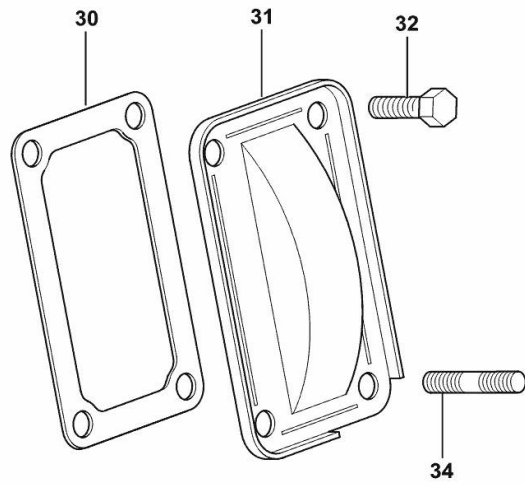
CASING COVER

| Fig. | P/n | QTY | Name |
|------|-----|-----|------|
|------|-----|-----|------|

Notes:

[XT-105 -> 10001]

| | | | |
|----|--------------|---|--------------------------------|
| 30 | 0.065.1152.0 | 1 | gasket |
| 31 | 0.065.1151.0 | 1 | cover |
| 32 | 2.0112.205.2 | 2 | screw m 8 p.1.25 x 16 |
| 34 | 2.0432.005.7 | 2 | stud bolt m 8 p.1.5 / p.1 x 25 |



9_33011_04_0-A-001

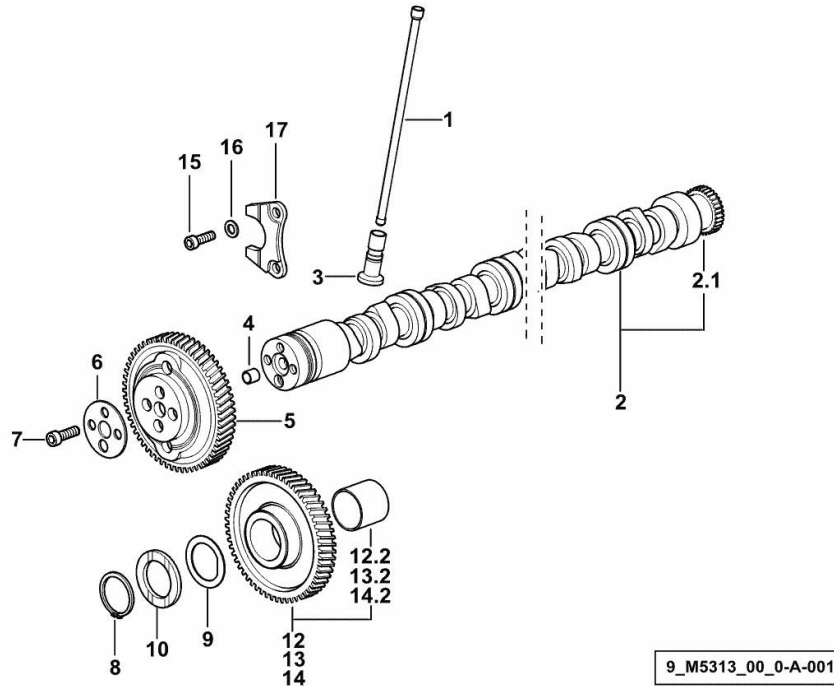
Section: B0 - ENGINE

CAMSHAFT

| Fig. | P/n | QTY | Name |
|------|-----|-----|------|
|------|-----|-----|------|

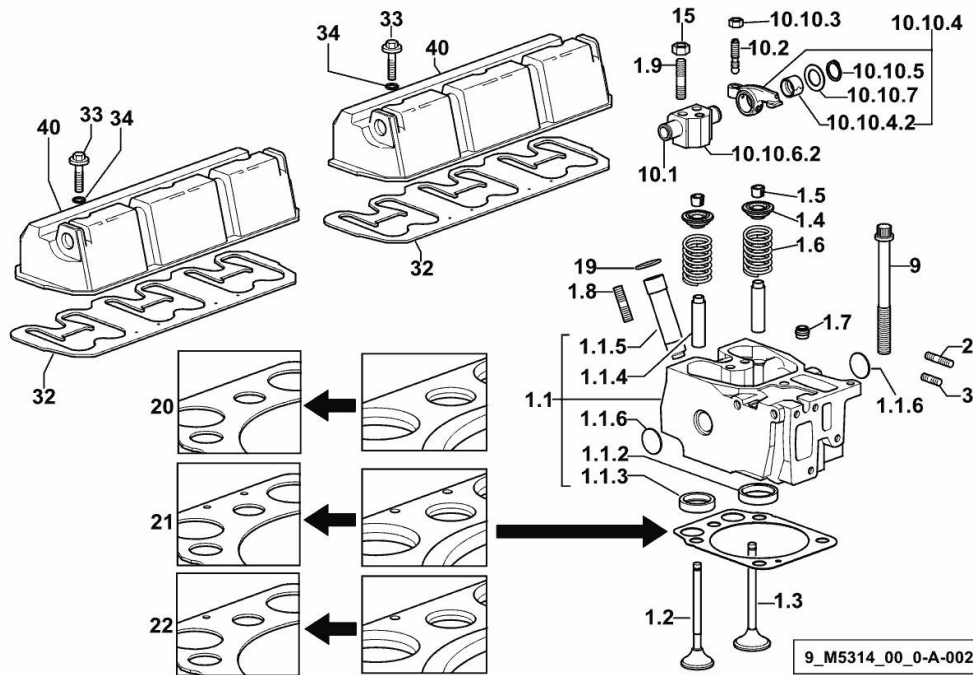
Notes:

[XT-105 -> 10001]



| | | | |
|------|-----------------|-----|---|
| 1 | 0.065.1331.2 | 12 | rod |
| 2 | 0.013.1647.3/10 | 1 | camshaft |
| 2.1 | 0.065.1324.0/10 | 1 | gear Z = 32 |
| 3 | 0.065.1330.0 | 12 | tappets |
| 4 | 2.1559.398.0 | 1 | bushing 10.5x13x12 |
| 5 | 0.013.5017.0 | 1 | gear z=58 |
| 6 | 0.065.1350.0 | 1 | small disc |
| 7 | 2.0132.207.2 | 4 | screw m 10 p.1 x 25 |
| 8 | 2.1410.016.1 | 1 | circlip 40 |
| 9 | 0.065.1352.0 | 1 | shim |
| 10 | 0.018.2233.0 | 2 | shoulder ring |
| 12 | 0.007.1177.3/20 | 0.5 | gear z = 57 - WITH RED IDENTIFICATION STAMP |
| 12.2 | 2.1559.185.0/10 | 1 | bushing |
| 13 | 0.007.1178.3/20 | 0.5 | gear z = 57 - WITH YELLOW IDENTIFICATION STAMP |
| 13.2 | 2.1559.185.0/10 | 1 | bushing |
| 14 | 0.007.1179.3/20 | | gear z = 57 - WITH GREEN IDENTIFICATION STAMP |
| 14.2 | 2.1559.185.0/10 | 1 | bushing |
| 15 | 2.0312.205.2 | 2 | screw |
| 16 | 2.1480.014.1 | 2 | washer 8 |
| 17 | 0.065.1353.0 | 1 | small plate |

Section: B0 - ENGINE
CYLINDER HEAD



| Fig. | P/n | QTY | Name |
|-------------------|-----------------|-----|------------------------------------|
| Notes: | | | |
| [XT-105 -> 10001] | | | |
| 1.1 | 0.017.0867.3 | 1 | engine head |
| 1.1.2 | 0.078.1426.0 | 1 | valve seat |
| 1.1.3 | 0.066.1427.0 | 1 | valve seat |
| 1.1.4 | 0.007.1779.0/20 | 2 | valve guide |
| 1.1.5 | 0.012.9984.0/20 | 1 | bush |
| 1.1.6 | 2.3170.012.2 | 2 | expansion plug Ø 30 |
| 1.2 | 0.066.1421.0 | 1 | exhaust valve |
| 1.3 | 0.010.6016.0 | 1 | inlet valve mm 43.63 / Ø mm 9 |
| 1.4 | 0.066.1425.0 | 2 | cup |
| 1.5 | 0.074.1423.0 | 4 | conical valve cotter |
| 1.6 | 2.4019.287.0 | 2 | spring |
| 1.7 | 2.1519.117.0 | 2 | special oil seal |
| 1.8 | 2.0432.161.7 | 1 | stud bolt m 10 p.1.5 / p.1.25 x 40 |
| 1.9 | 2.0432.163.7 | 2 | stud bolt m 10 p.1.5 / p.1.25 x 45 |
| 2 | 2.0432.011.7 | 6 | stud bolt m 8 p.1.25 / p.1 x 40 |
| 3 | 2.0432.005.7 | 6 | stud bolt m 8 p.1.5 / p.1 x 25 |
| 9 | 0.012.2673.0 | 24 | screw m 14 p.2x141 |
| 10.1 | 0.066.1431.0 | 1 | pin |
| 10.2 | 0.021.1434.0 | 2 | screw |
| 10.10.3 | 2.1011.405.2 | 2 | nut m 8 p.1 |
| 10.10.4 | 0.066.1432.3 | 2 | rocker arm |
| 10.10.4.2 | 2.1559.021.0/40 | 1 | bushing 15x19x22 |
| 10.10.5 | 2.1410.055.7 | 2 | circlip 19 |
| 10.10.6.2 | 0.066.1430.0/10 | 1 | support |
| 10.10.7 | 2.1599.432.0 | 2 | shoulder ring |
| 15 | 2.1011.421.2 | 12 | nut m 10 p.1.25 |
| 19 | 2.1532.507.0 | 6 | oil seal 17x3.53 |
| 20 | 0.015.9190.0 | 0.5 | head gasket mm 1.2 |
| 21 | 0.015.9191.0 | 5 | head gasket mm 1.4 |
| 22 | 0.015.9192.0 | 0.5 | head gasket mm 1.6 |
| 32 | 0.009.3877.0/10 | 2 | tappet gasket |
| 33 | 2.0399.288.2/10 | 6 | screw m 8x36x46 |
| 34 | 2.1532.018.0 | 6 | oil seal 9.19 x 2.62 |
| 40 | 0.014.0696.0 | 2 | cover |

Thank you so much for reading.
Please click the “Buy Now!”
button below to download the
complete manual.



After you pay.

You can download the most
perfect and complete manual in
the world immediately.

Our support email:

ebooklibonline@outlook.com