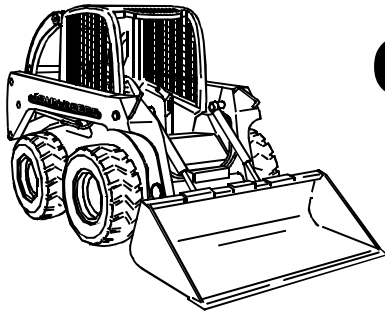


**Planetary and Chain
Drive Augers
PA30 and CA25 for
240, 250, 260, 270, and
4475, 5575, 6675, 7775, 8875
Skid Steers**

(Serial No. 100100 –)



**OPERATOR'S
MANUAL**

**John Deere
Commercial Worksite Products**

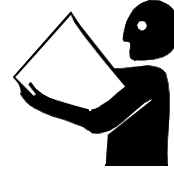
OMKV16795 A9

North American Version
Litho in U.S.A
English

INTRODUCTION

THANK YOU for purchasing a John Deere product.

Read this manual and your vehicle manual thoroughly. Failure to do so could result in personal injury or equipment damage.



This manual should be considered a permanent part of your attachment and should remain with the attachment when you sell it.

Measurements in this manual are metric units and their U.S. customary equivalents. RIGHT-HAND and LEFT-HAND sides are determined by facing in the direction the machine will travel when going forward. When you see a broken line arrow (----->), it indicates the part it is pointing to is hidden.

Product warranty is provided as part of John Deere's support program for customers who operate and maintain their equipment as described in this manual. The product warranty is explained on the warranty certificate you received from your dealer.

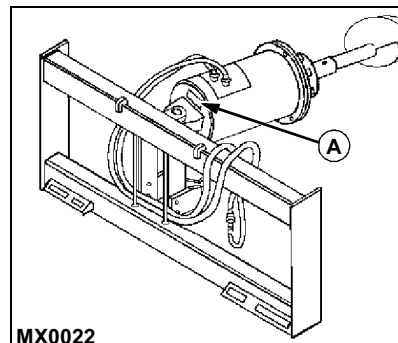
Record identification numbers below. Be sure to record all the numbers to help in tracing the attachment if it is stolen. You also need to give these numbers to your authorized John Deere skid steer dealer when you order parts.

DATE OF PURCHASE:

DEALER NAME:

DEALER PHONE:

SERIAL NUMBER (A):



MX0022

TABLE OF CONTENTS

	Page
Safety Signs	1
Preparing the Vehicle	2
Installing	3
Removing	10
Operating	14
Service Machine Safely	25
Service	27
Troubleshooting	39
Storing Machine	41
Specifications	42
Warranty	44
Index	45
John Deere Service Literature	49

All information, illustrations and specifications in this manual are based on the latest information at the time of publication. The right is reserved to make changes at any time without notice.

COPYRIGHT© 1999
John Deere Commercial Worksite Products
All rights reserved

SAFETY SIGNS

Safety-Alert Symbol

Read and recognize safety information. Be alert to the potential for personal injury when you see this safety-alert symbol.



On your machine safety labels, the words DANGER, WARNING, and CAUTION are used with this safety-alert symbol. DANGER identifies the most serious hazards. In this manual, the word CAUTION and this symbol call attention to safety messages.

Machine Safety Labels

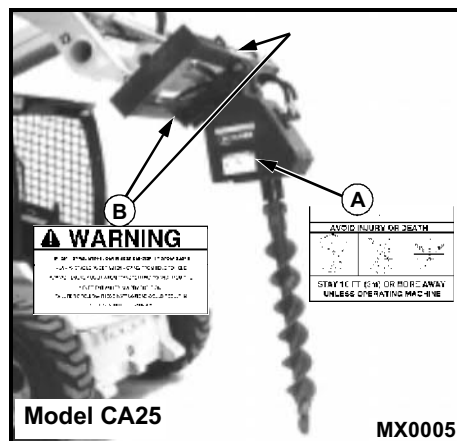
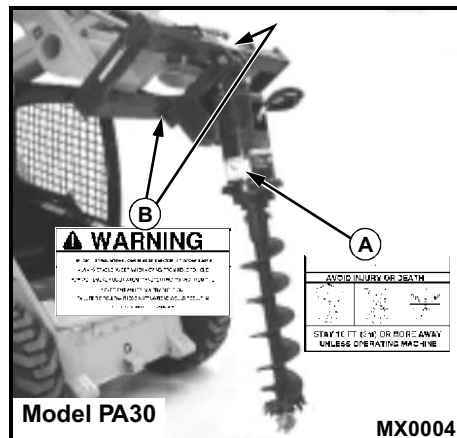
DANGER (A)

AVOID INJURY OR DEATH
STAY 10 FT. (3m) OR MORE
AWAY UNLESS OPERATING
MACHINE

- Read and understand operator's manual before operating or servicing machine.
- Stay away from rotating auger & cutting head.
- Check for underground utility lines.

WARNING (B)

- Before dismounting, lower mast and safely stow auger.
- Always cradle auger when moving from hole to hole.
- Always remove auger when transporting to and from site.
- Never put auger in a pry position.
- Failure to follow these instructions could result in serious injury or damage!!!

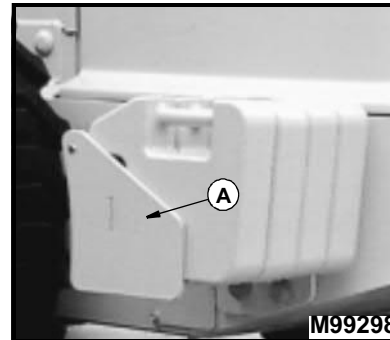


PREPARING THE VEHICLE

Ballasting

Rear ballast is not required but will improve skid steer stability when the auger is installed. Rear ballast consist of a total of eight 20 kg (44 lb) Quik-Tatch weights mounted behind the rear skid steer tires.

Install rear weight brackets (A) and weights using the installation instructions supplied with the weight bracket kit. Ballasting kits are available at your authorized John Deere skid steer dealer.



INSTALLING

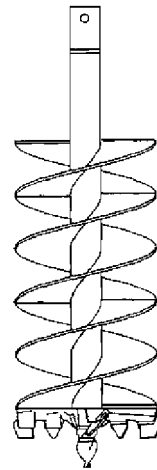
Park Skid Steer Safely

- Stop skid steer on a level surface, not on a slope.
- Lower boom to the ground.
- Engage the park brake.
- STOP the engine.
- Remove the key.
- Remove the seat belt.
- Before you leave the operator's seat, wait for engine and all moving parts to STOP.
- If desired, install proper ballast to improve skid steer stability. (See Ballasting in the PREPARING THE VEHICLE section.)

Select Auger Bit

Auger bit selection is important to ensure maximum digging performance and prevent premature wear or damage to the bit. Select the correct bit for the type of ground conditions and digging applications you encounter.

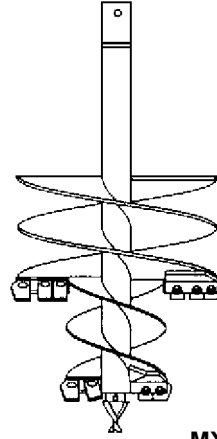
Standard Duty Bit – For moderate to difficult ground conditions including compacted soil, heavy clay, asphalt, and rocky or frozen ground.



MX0023

INSTALLING

Tree and Shrub Bit – For tree and shrub planting. Two-diameter design digs a smaller diameter hole for fertilizer or mulch mixture underneath the root ball. The larger diameter provides clearance between the side walls of the hole and the root ball.



MX0024

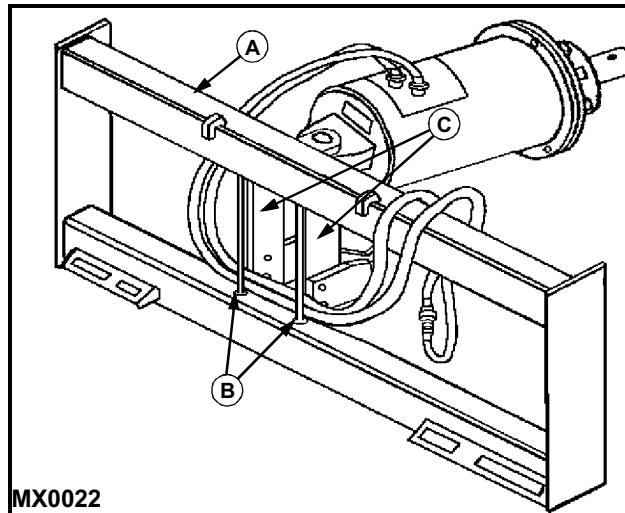
Rock Bit – For fracturable rock, frozen ground, and extremely compacted soils.



MX0025

INSTALLING

Route Auger Hydraulic Hoses



1. Disconnect the auger hydraulic hose couplers.
2. Route the hydraulic hoses through opening at left side of mounting bracket (A) and between rods (B) and center supports (C).
3. Connect the hydraulic hose couplers together to keep them clean.

Buy Now



Our support email:

ebooklibonline@outlook.com