

A & AV Tractors

Operators Manual

1004045R2

Reprinted

CASE III



This symbol means ATTENTION! BECOME ALERT! YOUR SAFETY IS INVOLVED. The message that follows the symbol contains important information about your safety. Carefully read the message. Make sure you fully understand the causes of possible injury or death.

SB001

IF THIS MACHINE IS USED BY AN EMPLOYEE, IS LOANED, OR IS RENTED, MAKE SURE THAT THE OPERATOR UNDERSTANDS THE TWO INSTRUCTIONS BELOW.

BEFORE THE OPERATOR STARTS THE ENGINE:

1. GIVE INSTRUCTIONS TO THE OPERATOR ON SAFE AND CORRECT USE OF THE MACHINE.
2. MAKE SURE THE OPERATOR READS AND UNDERSTANDS THE OPERATOR'S MANUAL FOR THIS MACHINE.



IMPROPER OPERATION OF THIS MACHINE CAN CAUSE INJURY OR DEATH.

BEFORE STARTING THE ENGINE, DO THE FOLLOWING:

1. READ THE OPERATOR'S MANUAL.
2. READ ALL SAFETY DECALS ON THE MACHINE.
3. CLEAR THE AREA OF OTHER PERSONS.

LEARN AND PRACTICE SAFE USE OF MACHINE CONTROLS IN A SAFE, CLEAR AREA BEFORE YOU OPERATE THIS MACHINE ON A JOB SITE.

It is your responsibility to observe pertinent laws and regulations and to follow manufacturer's instructions on machine operation and maintenance.

See your Authorized Case dealer for additional operator's manuals, parts catalogs, and service manuals.

TO THE OWNER

The purpose of this manual is to assist you in realizing the benefits you anticipated when you purchased this International Harvester product. Literally thousands of people have contributed to the design and production of this product and its delivery to you. They have an interest in its successful performance and have provided this Manual to give you the benefit of the experience they have gained through years of field testing and normal usage of this and similar products.

The way you operate and the care you give this product will have much to do with its successful performance. This manual has been carefully prepared and the information arranged and illustrated to make it as easy as possible for you to find the information you wish. It will pay you to read the entire manual carefully before operating the product and keep it handy for future reference. Your International Harvester Dealer will be glad to answer any further questions you may have on the operation or care of this product.

All illustrations and descriptive matter in this publication apply to International Harvester products sold under the McCormick, McCormick-International, McCormick-Deering, or McCormick-Deering International trade name.

**IMPORTANT FUEL SYSTEM SAFETY WARNING
AND
ANNOUNCEMENT OF FREE, REPLACEMENT GASOLINE CAP**



CAUTION! The following information pertains to personal safety. Be sure to read and follow these instructions.

PROBLEM — Gasoline vapors can build up pressure in your gasoline tank.

All gasoline fuels are more volatile today than ever before. They vaporize and build up pressure in your gasoline tank more easily than in the past. Winter grade gasoline is especially subject to vaporization and pressure build-up when used on hot Spring or Fall days. If you have a tractor which is out of tune or not properly maintained, it can run hotter and increase vaporization.

DANGER — Fire and personal injury.

If the fuel cap is removed when the gasoline tank is hot and vapor pressure has, under certain circumstances, built up in the tank, this sudden release of pressure could force gasoline out of the tank. If the gas cap is not fully secured and tightened, it could come off the tank, and again, gasoline could escape. This sudden eruption of gasoline exposes the operator to, and may cover him with, liquid fuel and vapors and is a clear fire hazard if a source of ignition is present. A running engine is a source of ignition, as are cigarettes, open flames, sparks or a poorly maintained exhaust system. **An immediate fire could occur.** The operator or anyone in the area could be burned and suffer serious injury or even death.

PRECAUTIONS — Observe the following steps for safe operation:

- Always tighten gas caps securely.
- Never, under any circumstances, take the gas cap off a hot or running tractor.
- Never hold over Winter gasoline for use in the Spring. Remove any equipment unnecessary for warm weather operations, such as comfort covers, heat housers, or radiator covers.
- Maintain equipment properly and pay particular attention to electrical, exhaust, fuel, and cooling systems. Repair or replace frayed electrical wires; leaky exhaust manifolds, gaskets, pipes and mufflers; damaged carburetors, sediment bowls and fuel lines. Be sure radiators are clean inside and out. Clean off any accumulation of trash, oil or grease.
- Make sure that fuel cap vent holes are not plugged, gaskets are in good condition, and that cap tangs are firmly riveted. Repair worn, bent, or deformed filler necks and damaged heat shields or shield insulation. If your tractor is not equipped with a heat shield or insulation, install such equipment on applicable models.
- Be alert to any unusual sights and sounds during operation. If you suspect overheating or pressure build-up in the fuel system, do not touch the cap. Turn off the engine and allow the tractor to cool before you touch the cap.

FREE GASOLINE CAP — See your dealer today.

International Harvester has developed a new gasoline cap designed to improve vapor venting and to inhibit the sudden eruption of liquid fuel if the safety precautions against cap removal are not observed.

New caps will be exchanged **free of charge** with owners of certain models of International Harvester farm tractors. To see whether your tractor already has the new cap or to arrange to obtain one, simply contact your local International Harvester dealer. Also ask him for a free International Harvester brochure "New Facts About Fuels" and for free "Warning" decals for all gasoline equipment.

Gasoline Tractor Models Included in Cap Exchange Program (See Note)			
A	100	*504	2404
AV	130	F-544 Only	2424
B	140	560	2444
BN	200	600	2504
C	230	*606	2544
H	240	650	*2606
HV	300	F-656 Only	2706
M	330	660	2756
MV	340	666	2806
O	350	686	2826
OS	400	706	2856
W	404	756	
WR	424	766	
70	444	806	
86	450	826	
	460	856	

NOTE: New cap **will not** fit on any of these tractors.

B-275	I-434
B-276	I-544
I -284	I-656
I -354	I-2656
B-414	

* New cap **will not** fit on these tractors above serial numbers shown.

F-504	above serial No. 13400
I -504	above serial No. 14272
I -606	above serial No. 6879
I -2606	above serial No. 6879

New cap **will not** fit on any lawn and garden tractor in the Cadet model series or on any tractor with the gasoline tank behind the operator's seat.

CONTENTS

Description	Page No.
Introduction	
Engine serial number	2
Tractor serial number	2
Tractor specifications	3
Description	
Before starting your tractor	12, 13
Instruments and controls	8 to 11
Operating Your Tractor	
Driving the tractor	20 to 24
Operating a distillate-gasoline engine on distillate	17 to 19
Operating a distillate-gasoline engine on gasoline	19
Operating a gasoline engine	16, 17
Operating a kerosene engine	19
Preparing your tractor for each day's work	14, 15
Cold Weather Operation	
Anti-freeze solutions	25, 26
Cooling system	25
Lubrication	
Lubrication charts	30 to 35
General engine lubrication	26, 27
Greasing front wheels	29
Lubricating oil and grease specifications	36
Oil filter	27 to 29
Maintenance	
Adjusting Farmall-A rear wheel trucks	57
Adjusting Farmall-AV front and rear wheel treads	58, 59
Adjusting the drawbar	51
Air cleaning system	44
Brakes	50
Carburetor	39 to 41
Clutch	51
Cooling system	41 to 43
Fuel strainer	38
Magneto	46 to 49
Minor engine service operations	43
Periodic inspections	37, 38
Pneumatic tires	53 to 55
Seat	50
Spark plugs and cables	45
Trouble shooting chart	60 to 66
Valve clearance adjustment	49
Wheels	52, 56
Storing and Housing Your Tractor	67, 68
Special Attachments Index	69, 70

The instructions in this manual cover the operation of tractors on all types of fuel, except where otherwise specified.

INTRODUCTION

The purpose of this Owner's Manual is to explain maintenance requirements and routine adjustments which are necessary for the most efficient operation of your tractor. To protect your tractor investment, study your Manual before starting or operating your tractor.

If you should need information not given in this Manual, or require the services of a trained mechanic, we urge you to use the extensive facilities offered by the International Harvester dealer in your locality. Dealers are kept informed on the best methods of tractor servicing and are equipped to

provide prompt, high-class service in the field or in an up-to-date service station.

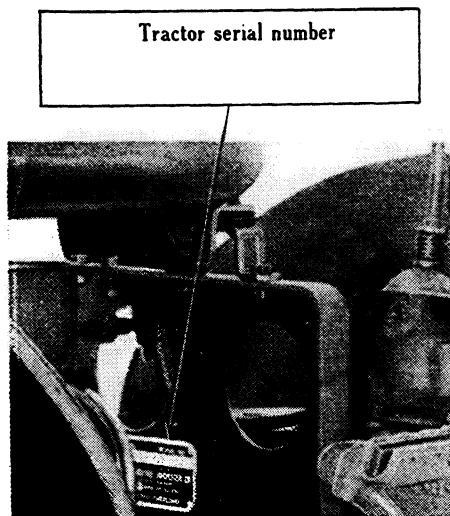
Dealers carry ample stocks of essential IH parts. These dealers are backed in every case by the full facilities of a conveniently located International Harvester branch.

When in need of parts, always give the International Harvester dealer your tractor and engine serial numbers. We suggest that you write these serial numbers in the spaces provided in the illustrations below, for ready reference when parts are required.

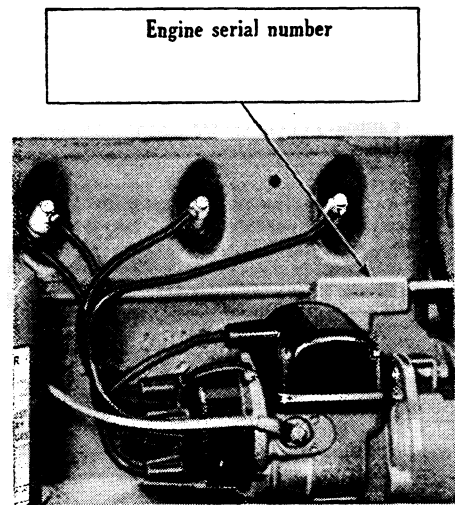
Throughout this manual the use of the terms LEFT, RIGHT, FRONT and REAR must be understood to avoid confusion when following instructions.

LEFT and RIGHT indicate the LEFT and RIGHT sides of the tractor when facing forward in the driver's seat.

Reference to FRONT indicates the radiator end of the tractor, and REAR the drawbar.



Illustr. 1—Tractor Serial No. on Left Seat Support Bracket.



Illustr. 2—Engine Serial No. on Right Side of Crankcase.

Buy Now



Our support email:

ebooklibonline@outlook.com