


**McCORMICK
O-4 and OS-4**

OPERATOR'S MANUAL

1004228R1

Reprinted






	<p><i>THIS SAFETY ALERT SYMBOL INDICATES IMPORTANT SAFETY MESSAGES IN THIS MANUAL. WHEN YOU SEE THIS SYMBOL, CAREFULLY READ THE MESSAGE THAT FOLLOWS AND BE ALERT TO THE POSSIBILITY OF PERSONAL INJURY OR DEATH.</i></p> <p>M171B</p>
-----------------------------------------------------------------------------------	----------------------------------------------------------------------------------------------------------------------------------------------------------------------------------------------------------------------------------------

If Safety Decals on this machine use the words **Danger, Warning or Caution**, which are defined as follows:

- **DANGER:** Indicates an immediate hazardous situation which if not avoided, will result in death or serious injury. The color associated with Danger is RED.
- **WARNING:** Indicates an potentially hazardous situation which if not avoided, will result in serious injury. The color associated with Warning is ORANGE.
- **CAUTION:** Indicates an potentially hazardous situation which if not avoided, may result in minor or moderate injury. It may also be used to alert against unsafe practices. The color associated with Caution is YELLOW.

If Safety Decals on this machine are ISO two panel Pictorial, decals are defined as follows:

- The first panel indicates the nature of the hazard.
- The second panel indicates the appropriate avoidance of the hazard.
- Background color is YELLOW.
- Prohibition symbols such as   and  if used, are RED.



WARNING

IMPROPER OPERATION OF THIS MACHINE CAN CAUSE INJURY OR DEATH. BEFORE USING THIS MACHINE, MAKE CERTAIN THAT EVERY OPERATOR:

- Is instructed in safe and proper use of the machine.
- Reads and understands the Manual(s) pertaining to the machine.
- Reads and understands ALL Safety Decals on the machine.
- Clears the area of other persons.
- Learns and practices safe use of machine controls in a safe, clear area before operating this machine on a job site.

It is your responsibility to observe pertinent laws and regulations and follow Case Corporation instructions on machine operation and maintenance.



FILE COPY
DO NOT REMOVE

1004 22 P 14

McCORMICK O-4 and OS-4

FILE COPY
DO NOT REMOVE

INTERNATIONAL HARVESTER COMPANY

180 North Michigan Ave.

Chicago 1, Illinois, U.S.A.

CONTENTS

Description	Pages
INTRODUCTION	
Delivery report (to be filled in when tractor is delivered)	Inside Front Cover
General	2
Serial numbers, engine and chassis	2
DESCRIPTION	
Before starting your new tractor.	8
Instruments and controls	4 to 7
Preparing the tractor for each day's work	9
Views of the tractor	3
OPERATING YOUR TRACTOR	
Driving the tractor	16, 17
Operating a gasoline engine	11
Operating a distillate engine on distillate	12 to 15
Operating a distillate engine on gasoline.	15, 16
Operating a kerosene engine.	15
Operating the belt pulley	17
Operating the power take-off	17
LUBRICATION	
Engine and chassis lubricant specifications.	21
General engine lubrication.	18
Greasing the front wheels	20
Lubrication guide.	22 to 25
Lubricating oil and grease specifications	20
Oil filter.	19
MAINTENANCE	
Air cleaning system	33
Battery ignition unit	35 to 37
Brakes	59, 60
Carburetor	27, 28
Clutch	60
Cold weather precautions.	29
Cooling system	30 to 32
Drawbar and hitch	61, 62
Fuel strainer.	27
Fuse	42
Generator (tractors with voltage regulation)	43, 45
Generator (tractors without voltage regulation)	52 to 54
Lamps	43
Magneto (tractors so equipped)	38 to 40
Minor engine service operations	58
Periodic inspections	26, 27
Pneumatic tires	63 to 65
Spark plugs and cables	34
Starting and lighting equipment (tractors with battery ignition and voltage regulation)	41 to 51
Starting and lighting equipment (tractors without voltage regulation)	52 to 55
Starting motor	45 and 54
Storage battery	56, 57
Storing and housing your tractor	70
Trouble shooting	65 to 69
Valve clearance adjustment	58
Wheels	62
SPECIAL EQUIPMENT	71 to 76
SPECIFICATIONS.	77, 78
COMPREHENSIVE INDEX	79, 80

A Careful Operator

IS THE BEST INSURANCE

AGAINST AN ACCIDENT

—National Safety Council.

INTRODUCTION

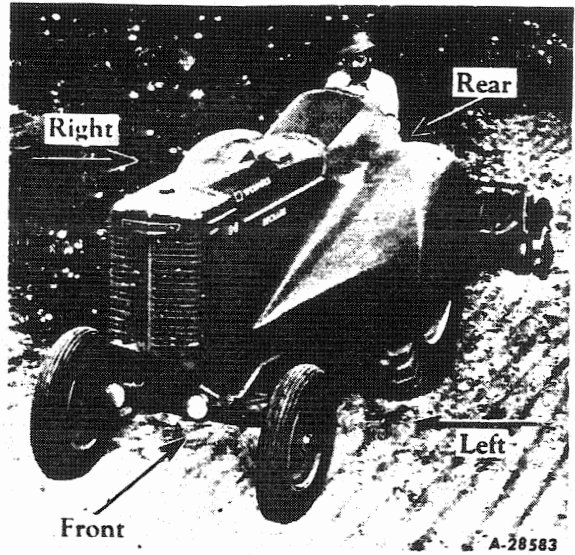
Assembled in this book are operating and maintenance instructions for the O-4 and OS-4 Tractors. This material has been prepared in detail in the hope that it will help you to better understand the correct care and efficient operation of your tractor.

If you should need information not given in this manual, or require the services of a trained mechanic, get in touch with the International Harvester dealer in your locality. Dealers are kept informed on the latest methods of servicing tractors. They carry stocks of IH parts, and are backed in every case by the full facilities of a nearby International Harvester District Office.

Throughout this manual the use of the terms LEFT, RIGHT, FRONT, and REAR must be understood to avoid confusion when following instructions. LEFT and RIGHT indicate the left and right sides of the tractor when facing forward in the driver's seat. Reference to FRONT indicates the radiator end and REAR the drawbar end of the tractor.

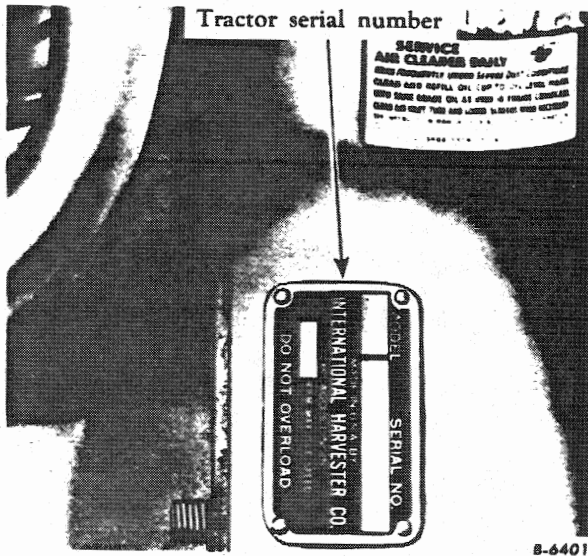
The illustrations in this manual are numbered to correspond with the pages on which they appear; for example, *Illusts. 6 and 6A* are on page 6.

When in need of parts, always specify the tractor and engine serial numbers. The trac-

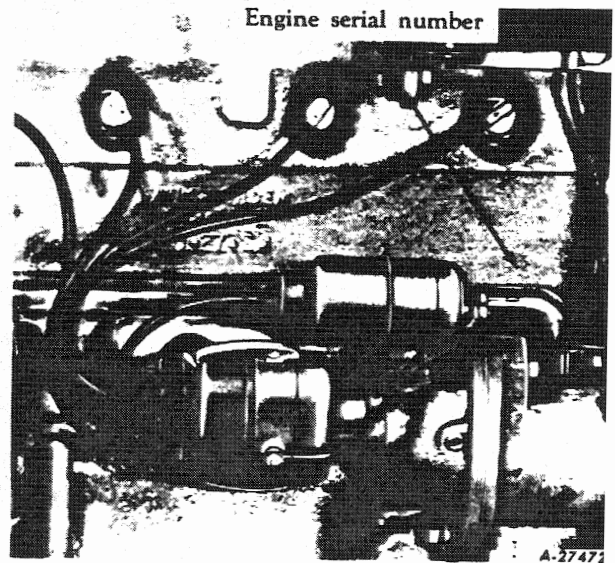


tor serial number is stamped on a name plate attached on the left side of the clutch housing. The serial number is preceded by the letters OBH or OBHS. See *Illust. 2*. The engine serial number is stamped on the right side of the engine crankcase. This serial number is preceded by the letters OBHM or OBHSM. See *Illust. 2A*.

For ready reference, these serial numbers should be written in the spaces provided on the Delivery Report found at the front of this manual.

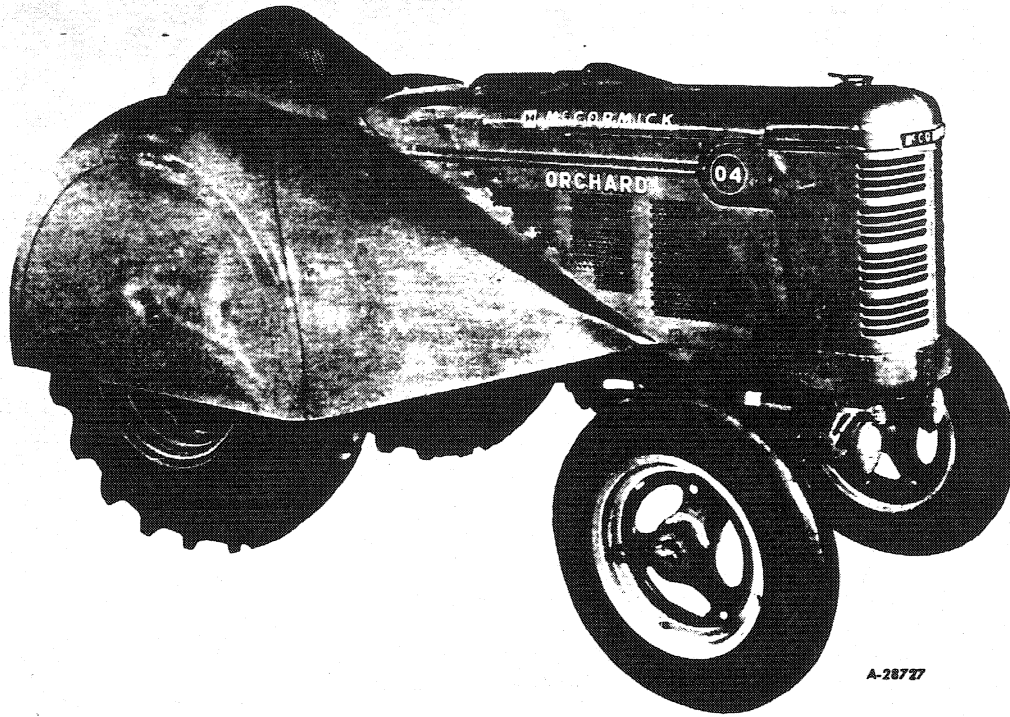


Illust. 2
Location of tractor serial number.

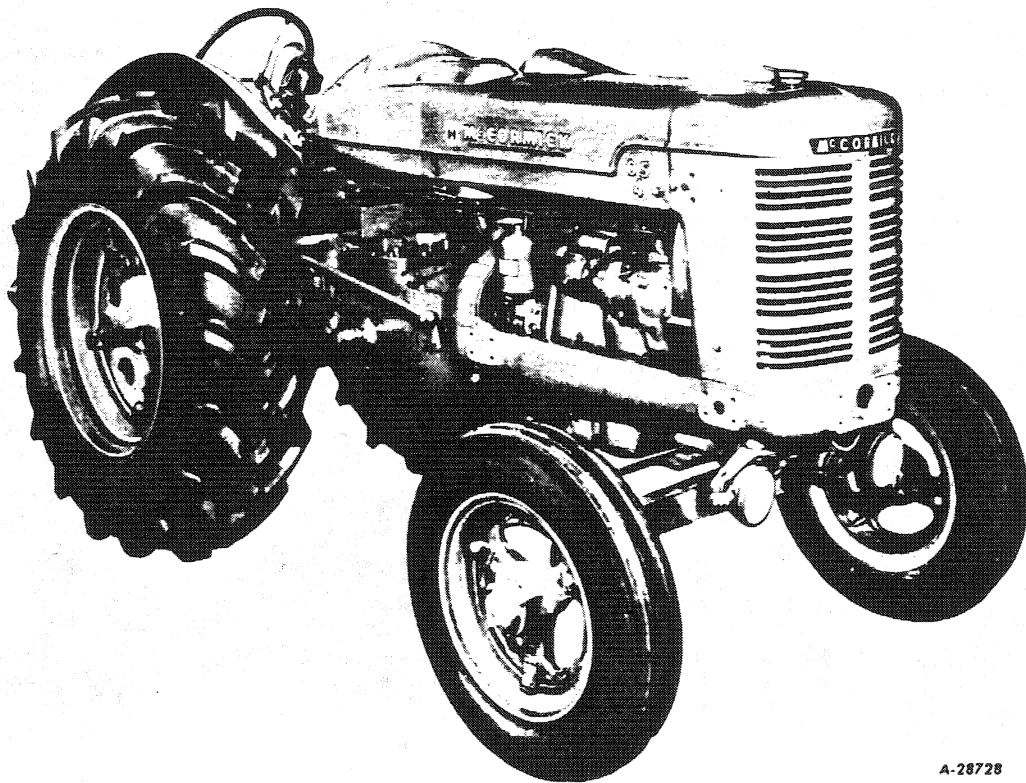


Illust. 2A
Location of engine serial number.

DESCRIPTION



Illust. 3
Right front view of the O-4 Tractor.

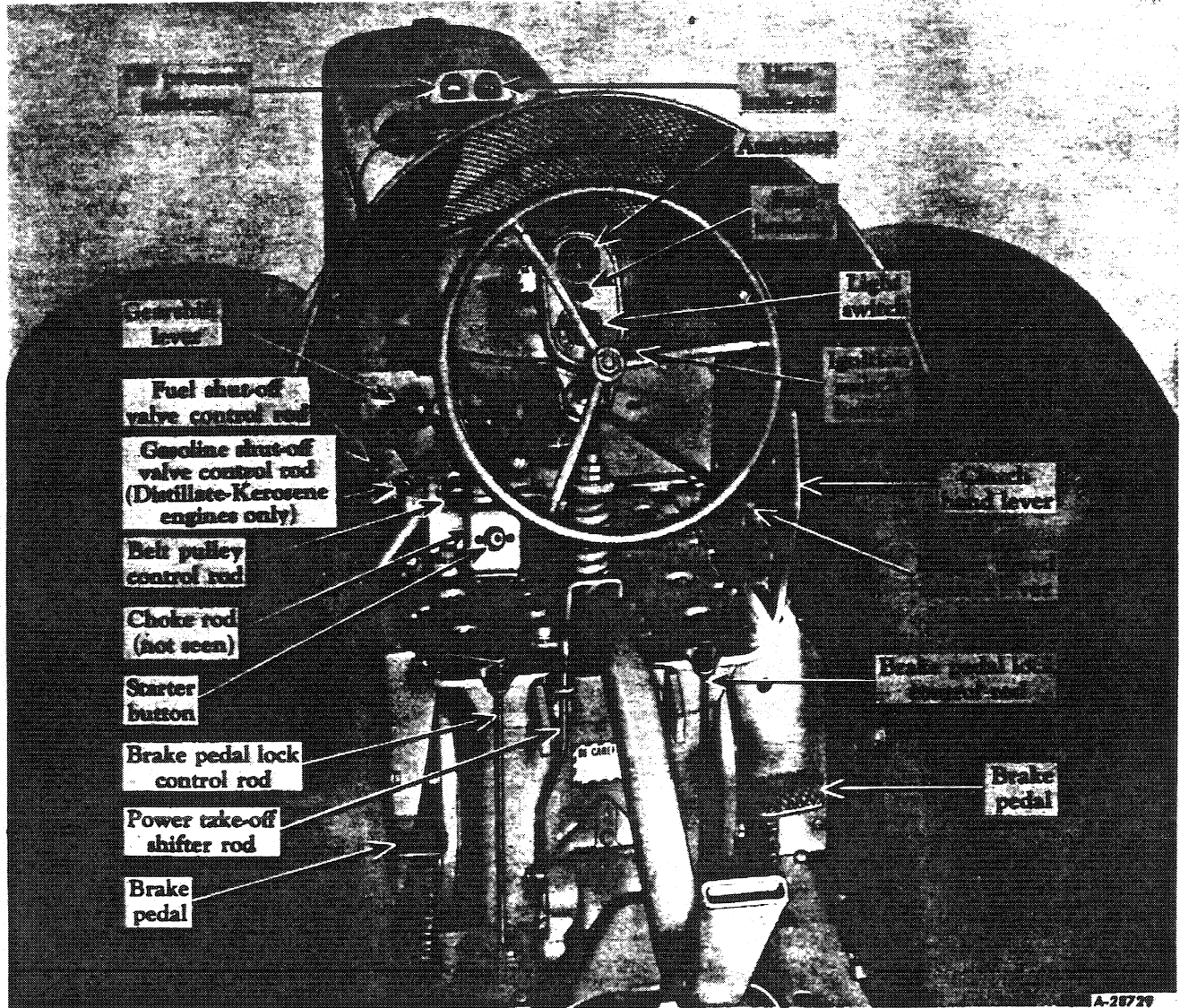


Illust. 3A
Right front view of the OS-4 Tractor.

DESCRIPTION

INSTRUMENTS AND CONTROLS

A variety of special equipment is available for use with the O-4 and OS-4 Tractors. The instructions for operating and maintaining the special equipment have been included in the instructions for operating and maintaining the tractors. Disregard the instructions for special equipment not on your tractor.



Illust. 4
Location of controls (O-4 Tractor).

Brake Pedals

These pedals are used to stop the tractor, to hold the tractor in a stationary position, or to assist in making sharp turns as outlined below:

To stop the tractor, depress both pedals an equal amount at the same time. This is very important when traveling in fifth speed forward.

To hold the tractor in a stationary position,

depress the pedals and lock them in this depressed position by using the brake pedal lock control rods.

To assist in making a sharp turn, operate the pedals individually, depressing the pedal on the side toward which the turn is to be made.

The brake pedal lock control rods (Illusts. 4 and 5) are used to lock the brake pedals in the depressed positions. This prevents the tractor from moving.

Buy Now



Our support email:

ebooklibonline@outlook.com