


**International
600 Tractor**
Operators Manual

1004457R1

Reprinted






 *THIS SAFETY ALERT SYMBOL INDICATES IMPORTANT SAFETY MESSAGES IN THIS MANUAL. WHEN YOU SEE THIS SYMBOL, CAREFULLY READ THE MESSAGE THAT FOLLOWS AND BE ALERT TO THE POSSIBILITY OF PERSONAL INJURY OR DEATH.*

M171B

If Safety Decals on this machine use the words **Danger, Warning or Caution**, which are defined as follows:

- **DANGER:** Indicates an immediate hazardous situation which if not avoided, will result in death or serious injury. The color associated with Danger is RED.
- **WARNING:** Indicates a potentially hazardous situation which if not avoided, will result in serious injury. The color associated with Warning is ORANGE.
- **CAUTION:** Indicates a potentially hazardous situation which if not avoided, may result in minor or moderate injury. It may also be used to alert against unsafe practices. The color associated with Caution is YELLOW.

If Safety Decals on this machine are ISO two panel Pictorial, decals are defined as follows:

- The first panel indicates the nature of the hazard.
- The second panel indicates the appropriate avoidance of the hazard.
- Background color is YELLOW.
- Prohibition symbols such as   and  if used, are RED.



WARNING

IMPROPER OPERATION OF THIS MACHINE CAN CAUSE INJURY OR DEATH. BEFORE USING THIS MACHINE, MAKE CERTAIN THAT EVERY OPERATOR:

- Is instructed in safe and proper use of the machine.
- Reads and understands the Manual(s) pertaining to the machine.
- Reads and understands ALL Safety Decals on the machine.
- Clears the area of other persons.
- Learns and practices safe use of machine controls in a safe, clear area before operating this machine on a job site.

It is your responsibility to observe pertinent laws and regulations and follow Case Corporation instructions on machine operation and maintenance.

Operator's Manual



INTERNATIONAL[®]

600

Tractor

INTERNATIONAL HARVESTER COMPANY

180 North Michigan Ave.

Chicago 1, Illinois, U.S.A.

TO THE OWNER

The purpose of this manual is to assist you in realizing the benefits you anticipated when you purchased this International Harvester product. Literally thousands of people have contributed to the design and production of this product and its delivery to you. They have an interest in its successful performance and have provided this manual to give you the benefit of the experience they have gained through years of field testing and normal usage of this and similar products.

The way you operate and the care you give this product will have much to do with its successful performance. This manual has been carefully prepared and the information arranged and illustrated to make it as easy as possible for you to find the information you wish. It will pay you to read the entire manual carefully before operating and keep it handy for future reference. Your International Harvester Dealer will be glad to answer any further questions you may have on the operation or care of this product.

It is the policy of International Harvester Company to improve its products whenever it is possible and practical to do so. We reserve the right to make changes or add improvements at any time without incurring any obligation to make such changes on products sold previously.

All illustrations and descriptive matter in this publication apply to International Harvester products sold under the International, McCormick, McCormick-International, McCormick-Deering, or McCormick-Deering International trade name.

TECHNICAL PUBLICATIONS AVAILABLE

Your International Harvester Dealer and his factory trained servicemen are best qualified to service your equipment. Up-to-date instructions and adequate special tools are also a part of your Dealer's service facilities.

This Operator's Manual was prepared to instruct you in proper operation and maintenance of your equipment. If you desire additional information you may purchase Service Manuals and/or Parts Catalogs. Additional copies of the Operator's Manual are also available.

Fill out the order blank and forward together with your check or money order in the appropriate amount (U.S. Funds) to:

International Harvester Company

PRINTING AND
DISTRIBUTION SERVICES

807 Blackhawk Drive

Westmont, Illinois 60559

Attention: Cashier

R1

-----Cut Along This Line -----

Title	Number	Qty.	Price Each
Operator's Manual			
Tractors			
International 600	1 004 457 R1		4.40
International 600 Diesel	1 004 458 R1		5.00
Parts Catalogs			
Tractors			
International 600	TC-63		7.70
International 600 Diesel	TC-63		7.70
Service Manuals			
Testing and Servicing			
Electrical Equipment	GSS-1052-C		3.00
Clutches and Springs	GSS-1281-K		2.00
Carburetor Specifications	GSS-1309		1.00
Tractor Maintenance			
And Tune-Up	GSS-1333-A		2.50
Engine Tune-Up Specifications Handbook	GSS-1356		4.00
Measuring Fuel Consumption Diesel Engine	GSS-1393		1.00
Torsion Bar Sensing Hitch Adjustments Handbook	GSS-1403		1.00

Cut Along This Line

TOTAL _____

Please Print

Name _____

Street Address _____

City _____

State _____

Zip Code _____

Date _____

Signed _____

Do not send cash or stamps

Prices subject to change without notice.

CONTENTS

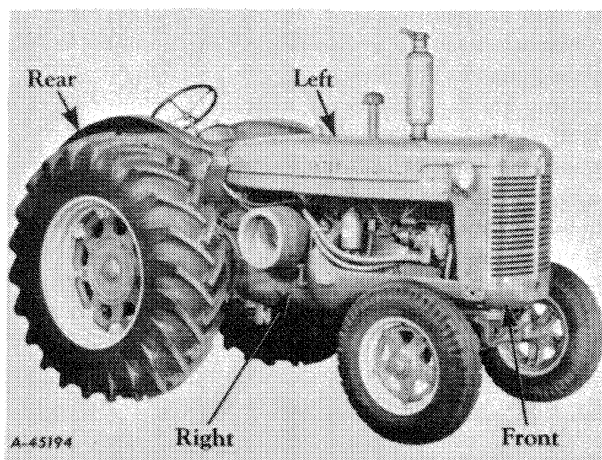
Description	Page No.	Description	Page No.	
INTRODUCTION		MAINTENANCE		
Delivery report (to be filled in when tractor is delivered).....	<div style="display: flex; align-items: center;"> { <div style="display: flex; flex-direction: column; gap: 5px;"> Inside Front Cover </div> </div>	Air cleaning system.....	38	
General.....		2	Battery ignition unit.....	40 to 42
Serial numbers, engine and tractor.....		2	Brakes.....	56
DESCRIPTION		Carburetor.....	32, 33	
Before starting your new tractor.....	7	Clutches.....	57, 58	
Instruments and controls.....	3 to 6	Cold weather precautions.....	33, 34	
Preparing your tractor for each day's work.....	8, 9	Cooling system.....	34 to 37	
View of the tractor.....	3	Fuel pump.....	31	
OPERATING YOUR TRACTOR		Fuel strainer.....	31	
Driving the tractor.....	12 to 16	Hydra-Touch system.....	63, 64	
Hitching the tractor to the implement....	20, 21	Hydraulic power steering.....	64, 65	
Operating a gasoline engine.....	10, 11	Magneto.....	43 to 45	
Operating the belt pulley.....	16	Minor engine service operations.....	55	
Operating the Hydra-Touch system.....	18, 19	Periodic inspections.....	30, 31	
Operating the pneumatic tire pump.....	21	Pneumatic tires.....	60 to 62	
Operating the power take-off.....	17	Spark plugs and cables.....	39	
	22	Starting and lighting equipment.....	46 to 51	
	24	Starting engines that have been in storage.	70	
LUBRICATION	24, 25	Storage battery.....	52, 53	
General engine lubrication.....	26 to 29	Storing and housing your tractor.....	70	
Greasing the front wheels.....	23	Tachometer drive unit.....	54	
Lubricating oil and grease specifications..		Trouble shooting.....	66 to 69	
Lubrication guide.....		Valve clearance adjustment.....	55	
Oil filter.....		Wheels.....	59	
		EXTRA EQUIPMENT and ACCESSORIES. 71 to 80		
		SPECIFICATIONS. 81, 82		

INTRODUCTION

Assembled in this book are operating and maintenance instructions for the International 600 Tractor. This material has been prepared in detail in the hope that it will help you to better understand the correct care and efficient operation of your tractor.

If you should need information not given in this manual, or require the services of a trained mechanic, get in touch with the International Harvester dealer in your locality. Dealers are kept informed on the latest methods of servicing tractors. They carry stocks of IH parts, and are backed in every case by the full facilities of a nearby International Harvester District Office.

Throughout this manual the use of the terms LEFT, RIGHT, FRONT, and REAR must be understood to avoid confusion when following instructions. LEFT and RIGHT indicate the left and right sides of the tractor when facing forward in the driver's seat. Reference to FRONT indicates the radiator end of the tractor; to REAR, the drawbar end of the tractor. See *Illust. 2*.



Illust. 2
Terms of location.

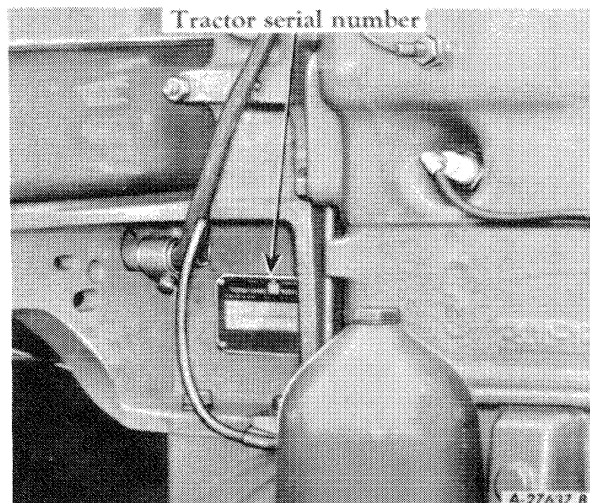
The illustrations in this manual are numbered to correspond with the pages on which they appear; for example, *Illusts. 2, 2A, and 2B are on page 2*.

In order to provide a tractor equipped as nearly as possible to suit each customer's needs, a variety of extra equipment and accessories is available.

Many of these items are illustrated and described in the Extra Equipment and Accessories section of this manual.

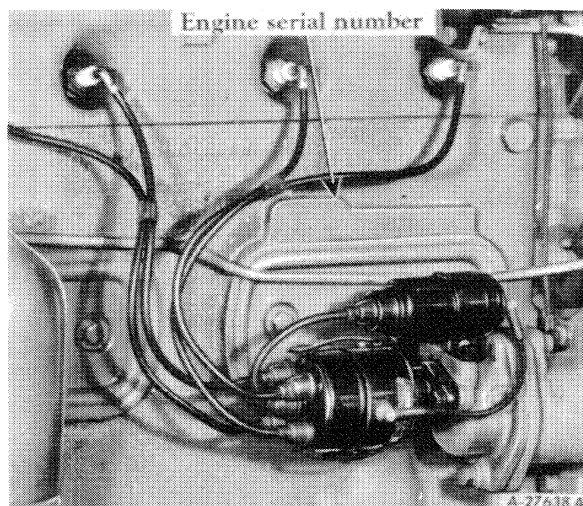
Where operating and maintaining instruction on these items is required, it is included in the instructions for operating and maintaining the tractor. Disregard the instructions for equipment not on your tractor.

When in need of parts, always specify the tractor and engine serial numbers. The tractor serial number is stamped on a name plate attached on the right side of the fuel tank front support. See *Illust. 2A*.



Illust. 2A
Location of tractor serial number.

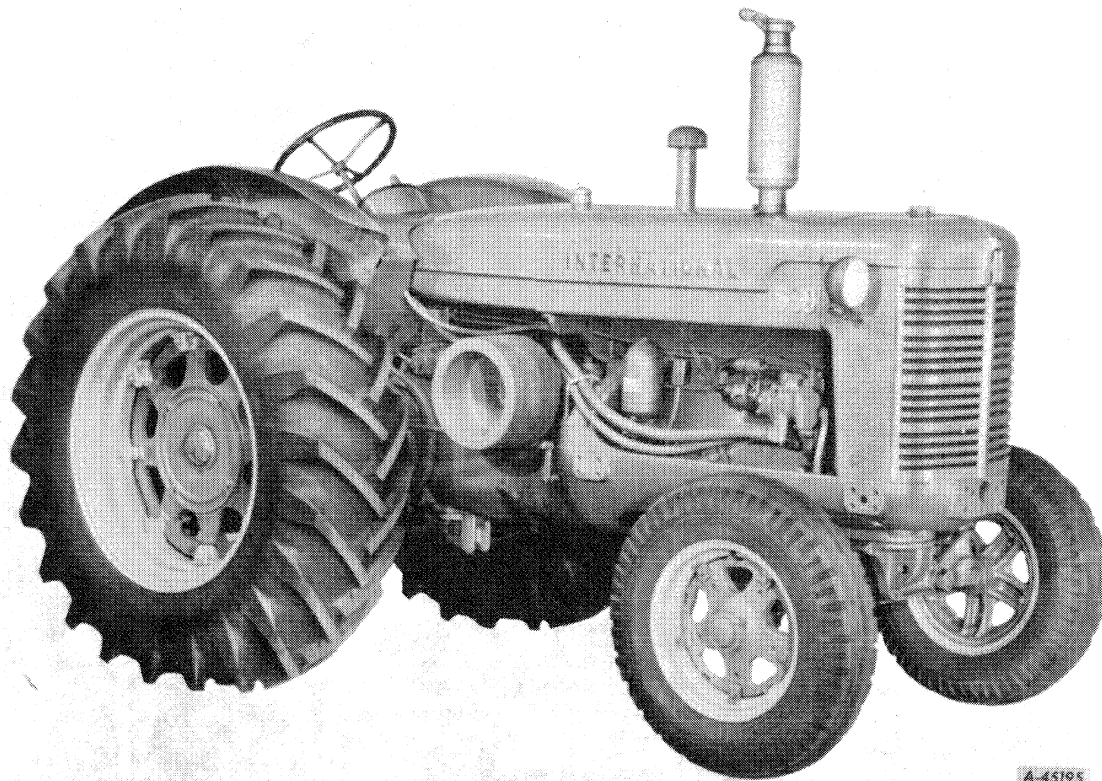
The engine serial number is stamped on the right side of the engine crankcase above the battery ignition unit. See *Illust. 2B*. This serial number is preceded by the prefix C-350, which indicates that it is a carbureted engine with a 350-cubic-inch piston displacement.



Illust. 2B
Location of engine serial number.

For ready reference, we suggest that you write these serial numbers in the spaces provided on the Delivery Report.

DESCRIPTION



Illust. 3
Right front view.

A-45195

Instruments and Controls

Brake Pedals

These pedals are used to stop the tractor, to hold the tractor in a stationary position, or to assist in making sharp turns as outlined below:

To stop the tractor, depress both pedals at the same time. Before driving the tractor in high gear, always latch the pedals together.

To hold the tractor in a stationary position, latch the pedals together, depress them and lock them in this depressed position by using the brake pedal lock control rod.

To assist in making a sharp turn, operate the pedals individually, depressing the pedal on the side toward which the turn is to be made.

The brake pedal latch (*Illusts. 4 and 15*) is used to latch both brake pedals together, causing the brakes to operate simultaneously.



Caution! Always latch the brake pedals together when driving the tractor in high gear (fifth speed). To latch the pedals to-

gether, engage latch "B" located in back of the right pedal (*Illust. 15*) in the slot in back of the left pedal. When the brake pedals are not latched together, the latch should rest in the slot in back of the right brake pedal.

The brake pedal lock control rod (*Illust. 4*) is used to lock the brake pedals in the depressed position. This prevents the tractor from moving when parked on a grade or when doing belt work.

Clutch Pedal

The clutch pedal is used to disengage the engine from the transmission. Push the pedal all the way down to disengage the engine clutch.

Clutch Hand Lever

The clutch hand lever is used to disengage the engine from the transmission. Pull the lever all the way back to disengage the engine clutch.

Buy Now



Our support email:

ebooklibonline@outlook.com