

330 Utility Tractor

Operators Manual

1014015R2

Reprinted

CASE III

TO THE OWNER

The purpose of this manual is to assist you in realizing the benefits you anticipated when you purchased this International Harvester product. Literally thousands of people have contributed to the design and production of this product and its delivery to you. They have an interest in its successful performance and have provided this manual to give you the benefit of the experience they have gained through years of field testing and normal usage of this and similar products.

The way you operate and the care you give this product will have much to do with its successful performance. This manual has been carefully prepared and the information arranged and illustrated to make it as easy as possible for you to find the information you wish. It will pay you to read the entire manual carefully before operating and keep it handy for future reference. Your International Harvester Dealer will be glad to answer any further questions you may have on the operation or care of this product.

It is the policy of International Harvester Company to improve its products whenever it is possible and practical to do so. We reserve the right to make changes or add improvements at any time without incurring any obligation to make such changes on products sold previously.

All illustrations and descriptive matter in this publication apply to International Harvester products sold under the International, McCormick, McCormick-International, McCormick-Deering, or McCormick-Deering International trade name.

As a member of the National Safety Council, we are privileged to use the Green Cross for Safety to designate not only our interest in Safety, but to point out more clearly the safety precautions in this manual.

CONTENTS

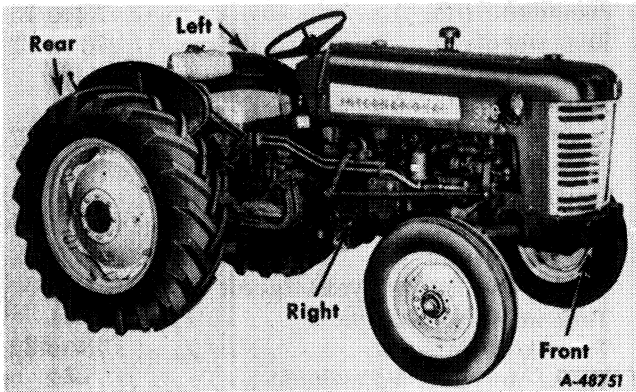
Description	Page No.	Description	Page No.
INTRODUCTION		MAINTENANCE	
Delivery report (to be filled in when tractor is delivered)	<div style="font-size: 2em; vertical-align: middle;">{</div> Inside Front Cover	Air cleaning system	41, 42
General		Battery ignition unit	44 to 47
Serial numbers, engine and tractor		Brakes	63, 64
	2	Carburetor	36
	2	Clutches	64, 65
DESCRIPTION		Cold weather operations	37, 38
Before starting your new tractor	7	Cooling system	38 to 41
Instruments and controls	4 to 6	Front wheels	67 to 69
Preparing your tractor for each day's work	8, 9	Fuel strainer	35
Views of the tractor	3	Hydra-Touch system	76, 77
		Independent power take-off	66, 67
OPERATING YOUR TRACTOR		Magneto	48 to 50
Driving the tractor	12 to 14	Minor engine service operations	63
Ground speeds	15	Periodic inspections	34, 35
Hitching the tractor to the implement	17	Pneumatic tires	73 to 75
Operating the engine	9 to 11	Rear wheels	70 to 72
Operating the belt pulley	20, 21	Spark plugs and cables	43
Operating the Hydra-Touch system	22, 23	Starting and lighting equipment	
Operating the pneumatic tire pump	23	Tractors with battery ignition	51 to 57
Operating the power take-off	18 to 20	Tractors with magneto	58
Operating the torque amplifier	16	Starting engines that have been in storage	83
LUBRICATION		Storage battery	59, 60
General engine lubrication	24	Storing and housing your tractor	82, 83
Greasing the front wheels	26	Tachometer drive unit	61
Lubrication guide	28 to 33	Trouble shooting	78 to 82
Lubricating oil and grease specifications	26, 27	Valve clearance adjustment	62
Oil filter	25	EXTRA EQUIPMENT AND ACCESSORIES	84 to 94
		SPECIFICATIONS	95, 96
		COMPREHENSIVE INDEX	97 to 100

INTRODUCTION

Assembled in this book are operating and maintenance instructions for the International 330 Utility Tractor. This material has been prepared in detail in the hope that it will help you to better understand the correct care and efficient operation of your tractor.

If you should need information not given in this manual, or require the services of a trained mechanic, get in touch with the International Harvester dealer in your locality. Dealers are kept informed on the latest methods of servicing tractors. They carry stocks of IH parts, and are backed in every case by the full facilities of a nearby International Harvester District Office.

Throughout this manual the use of the terms LEFT, RIGHT, FRONT, and REAR must be understood to avoid confusion when following instructions. LEFT and RIGHT indicate the left and right sides of the tractor when facing forward in the driver's seat. Reference to FRONT indicates the radiator end of the tractor; to REAR, the drawbar end. *See Illust. 2.*



Illust. 2

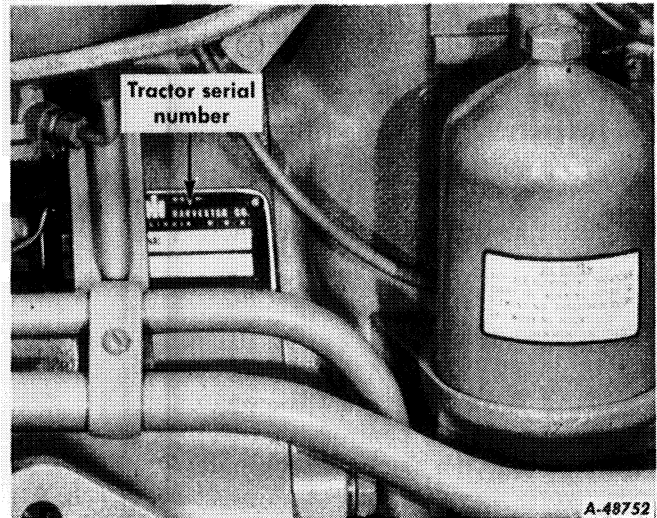
The illustrations in this manual are numbered to correspond with the pages on which they appear; for example, *Illusts. 2, 2A and 2B are on page 2.*

In order to provide a tractor equipped as nearly as possible to suit each customer's needs, a variety of extra equipment and accessories is available.

Many of these items are illustrated and described in the Extra Equipment and Accessories section of this manual.

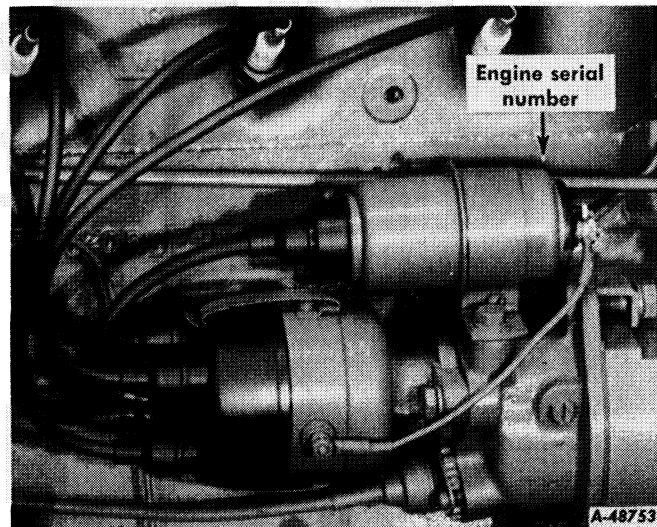
Where operating and maintaining instruction on these items is required, it is included in the instructions for operating and maintaining the tractor. Disregard the instructions for equipment not on your tractor.

When in need of parts, always specify the tractor and engine serial numbers including prefix and suffix letters. The tractor serial number is stamped on a name plate attached to the right side of the clutch housing. *See Illust. 2A.*



Illust. 2A
Location of tractor serial number.

The engine serial number is stamped on the right side of the engine crankcase above the battery ignition unit. *See Illust. 2B.* This serial number is preceded by the prefix C-135 which indicates that it is a carbureted engine with a 135-cubic-inch piston displacement.



Illust. 2B
Location of engine serial number.

For ready reference, we suggest that you write these serial numbers in the spaces provided on the Delivery Report.

DESCRIPTION

Instruments and Controls

Brake Pedals

These pedals are used to stop the tractor, to hold the tractor in a stationary position, or to assist in making sharp turns as outlined below:

To stop the tractor, depress both pedals at the same time. Before driving the tractor in high gear, always latch the pedals together.

To hold the tractor in a stationary position, latch the pedals together, depress and lock them in this depressed position by using the brake pedal lock.

To assist in making a sharp turn, operate the pedals individually, depressing the pedal on the side toward which the turn is to be made.

The brake pedal latch (*Illusts. 4 and 14*) is used to latch both brake pedals together, causing the brakes to operate simultaneously.

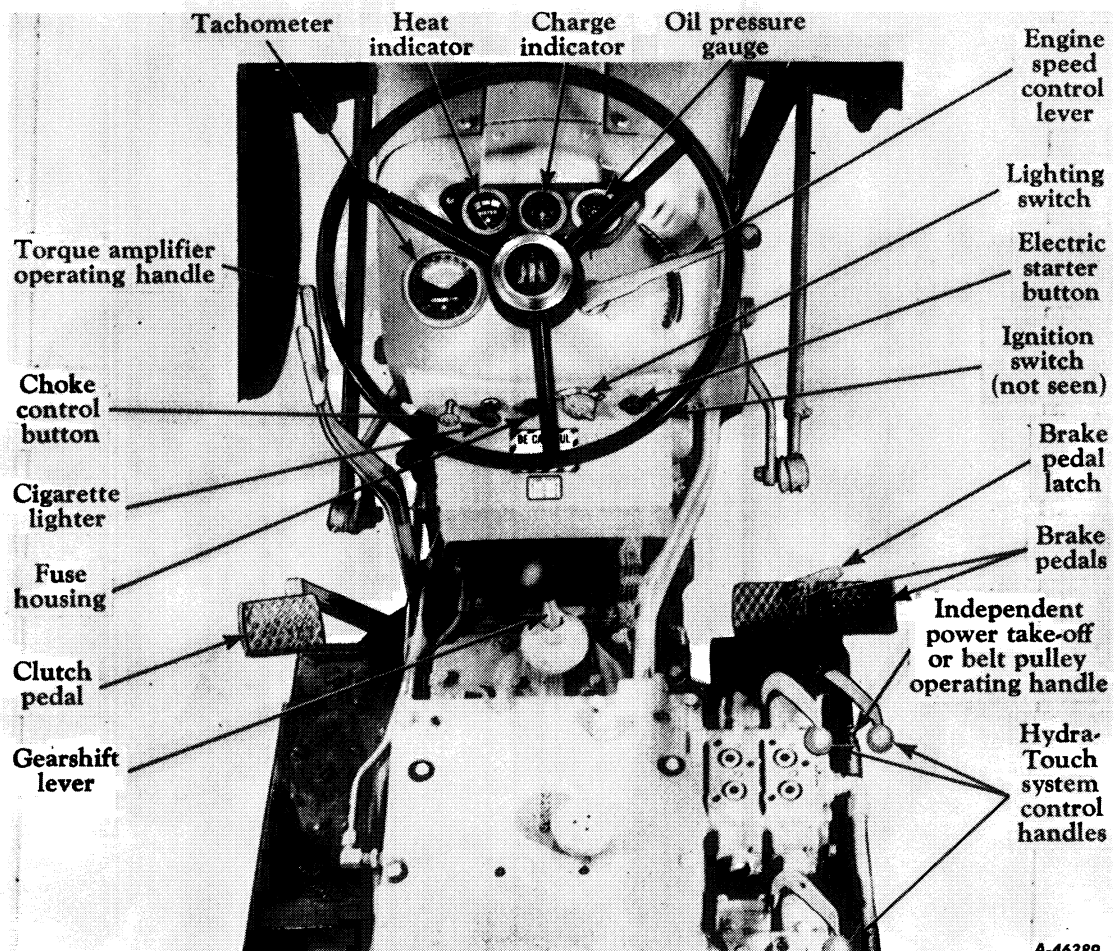


Caution! Always latch the brake pedals together when driving the tractor in high gear (fifth speed). To latch the pedals together, engage the latch (located in back of the left pedal) (*Illust. 14*) in the slot in back of the right pedal. When the brake pedals are not latched together, the latch should rest in the slot in back of the left brake pedal.

The brake pedal lock (*Illust. 14*) is used to lock the brake pedals in the depressed position; this prevents the tractor from moving.

Clutch Pedal

This pedal, when depressed all the way, disengages the engine from the transmission.



Illust. 4
Location of instruments and controls.

DESCRIPTION

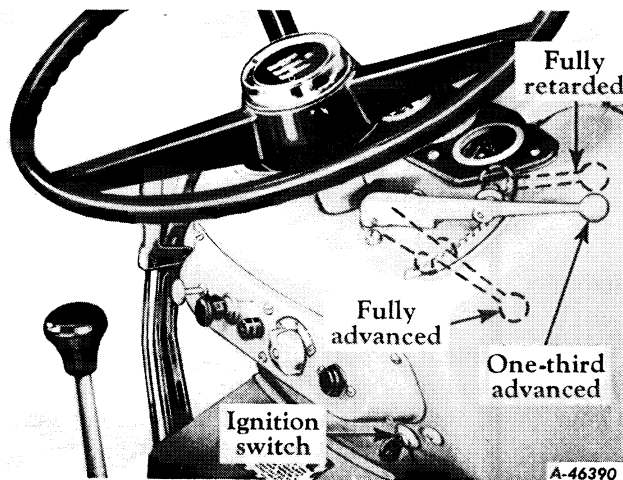
Choke Control Button

The choke control button makes it possible to regulate the carburetor choke from the driver's seat. Pulling out on the choke control button closes the carburetor choke for starting the engine; pushing it back in opens the choke.

Engine Speed Control Lever

This lever controls the speed of the engine and, when set in a given position, will maintain a uniform engine speed even though the engine load may vary.

The rated or maximum full load governed speed is 2,000 r.p.m.; maximum idle speed is approximately 2,200 r.p.m.; minimum idle speed (hand throttle) is 400 to 450 r.p.m. with the engine speed control lever fully retarded. *See Illust. 5.* Never operate the engine at more than the regular governed speed. Excessive speeds are harmful.



Illust. 5
Various positions of the engine speed control lever.

The governor is set at the factory and should require no adjustment. Consult your International Harvester dealer if the governor does not function properly.

Accelerator Pedal (Not Illustrated)

The accelerator pedal (if so equipped) is used when making frequent changes of tractor speeds. Pressing the pedal down with the heel increases the speed of the engine. The engine speed control lever should be retarded when the accelerator pedal is to be used.

Lighting Switch

The switch has three positions: "O" – off position, "D" – dim lights, and "B" – bright lights.

Cigarette Lighter

Push the lighter in to make electrical contact. When it pops back it is ready for use.

Ignition Switch

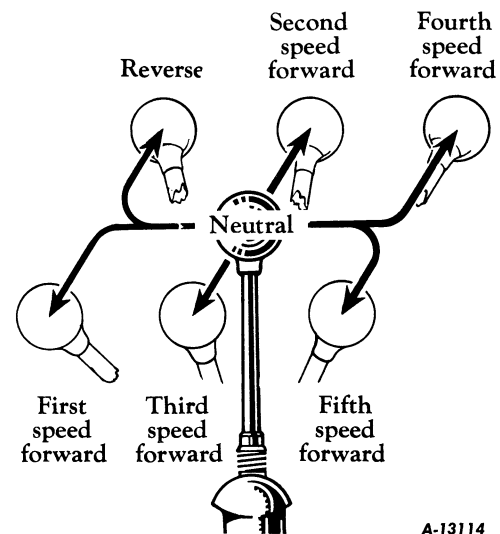
A key-type lock ignition switch is located below the right side of the instrument panel. *See Illust. 4.* Turn the key clockwise to a horizontal position to turn on the ignition. The key cannot be removed when in this position.

Caution! When the engine is not operating or the engine has stalled and the operator leaves the tractor, the key must be turned to the "off" position to prevent battery discharge.

Electric Starter Button

Pushing the button in completes the electrical circuit between the battery and the cranking motor solenoid and causes the cranking motor pinion to engage the flywheel ring gear, thereby cranking the engine. *Refer to page 9* for starting the engine.

Gearshift Lever



Illust. 5A
Gearshift positions.

This lever is used to select the various gear ratios in the transmission. There are five forward speeds and one reverse speed. *See Illust. 5A.*

DESCRIPTION

Transmission-Driven Power Take-Off or Belt Pulley Shifter Rod

The same shifter rod is used to engage or disengage the power take-off or belt pulley. See page 20 for power take-off operating instructions or page 21 for belt pulley operating instructions.

Independent Power Take-Off or Belt Pulley Operating Handle

The same operating handle is used to engage or disengage the independent power take-off or belt pulley. See page 19 for independent power take-off or page 20 for belt pulley operating instructions.

Hydra-Touch System Control Handle

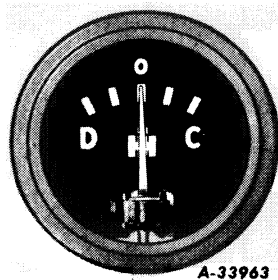
This handle (Illustr. 4) operates the Hydra-Touch Remote Control. It is used to raise, partially raise or lower implements. See page 22 for operating instructions.

Torque Amplifier Operating Handle

The torque amplifier operating handle is used to engage or disengage the torque amplifier. See page 16 for operating instructions.

Charge Indicator

This instrument (Illustrs. 4 and 6) indicates whether the generator is charging or the battery is discharging. If it shows discharge continuously, investigate the cause to avoid completely discharging the battery and possible damage to the generator. See pages 51 to 60 for additional information on electrical equipment.



Illustr. 6
Charge indicator.

Heat Indicator

This instrument (Illustrs. 4 and 6A) indicates the relative temperature range of the liquid in the cooling system for best engine performance. The indicator pointer should be on the low side of the "RUN" range for engines using gasoline for fuel.



Illustr. 6A
Heat indicator.

Oil Pressure Gauge

This gauge (on the instrument panel) indicates whether lubricating oil is circulating through the engine. The indicator needle should be past the first mark above zero when the engine is running at speeds approximately 100 R. P. M. above slow idle speed. See Illustr. 6B. If it is not, stop the engine immediately and investigate the cause of oil pressure failure. If you are unable to find the cause, consult your International Harvester dealer before operating the engine.



Illustr. 6B
Oil pressure gauge.

Tachometer

This instrument (Illustr. 4) records engine hours of operation, shows normal tractor speeds in miles per hour in all forward gears, and indicates engine R. P. M. which provides a means of setting exact engine speed specified for Power Take-Off Operations.

For tractors with Independent Power Take-Off or Transmission Driven Power Take-Off with Torque Amplifier, there is a mark on the lower half of the dial indicating a P. T. O. shaft speed of 541 R. P. M. at 1750 engine R. P. M.

For tractors with Transmission Driven Power Take-Off without Torque Amplifier, there is a mark indicating a P. T. O. shaft speed of 541 R. P. M. at 1650 engine R. P. M.

Refer to the tables on page 15 for normal ground speeds according to tire sizes. Refer to "Power Take-Off Specifications" on page 18 for power take-off shaft speeds.

Buy Now



Our support email:

ebooklibonline@outlook.com