


340 Utility Tractor

Operators Manual

1014185R6



 ***This symbol means ATTENTION! BECOME ALERT! YOUR SAFETY IS INVOLVED. The message that follows the symbol contains important information about your safety. Carefully read the message. Make sure you fully understand the causes of possible injury or death.***

SB001

IF THIS MACHINE IS USED BY AN EMPLOYEE, IS LOANED, OR IS RENTED, MAKE SURE THAT THE OPERATOR UNDERSTANDS THE TWO INSTRUCTIONS BELOW.

BEFORE THE OPERATOR STARTS THE ENGINE:

1. GIVE INSTRUCTIONS TO THE OPERATOR ON SAFE AND CORRECT USE OF THE MACHINE.
2. MAKE SURE THE OPERATOR READS AND UNDERSTANDS THE OPERATOR'S MANUAL FOR THIS MACHINE.



IMPROPER OPERATION OF THIS MACHINE CAN CAUSE INJURY OR DEATH.

BEFORE STARTING THE ENGINE, DO THE FOLLOWING:

1. READ THE OPERATOR'S MANUAL.
2. READ ALL SAFETY DECALS ON THE MACHINE.
3. CLEAR THE AREA OF OTHER PERSONS.

LEARN AND PRACTICE SAFE USE OF MACHINE CONTROLS IN A SAFE, CLEAR AREA BEFORE YOU OPERATE THIS MACHINE ON A JOB SITE.

It is your responsibility to observe pertinent laws and regulations and to follow manufacturer's instructions on machine operation and maintenance.

See your Authorized Case dealer for additional operator's manuals, parts catalogs, and service manuals.

**IMPORTANT FUEL SYSTEM SAFETY WARNING
AND
ANNOUNCEMENT OF FREE, REPLACEMENT GASOLINE CAP**



CAUTION! The following information pertains to personal safety. Be sure to read and follow these instructions.

PROBLEM — Gasoline vapors can build up pressure in your gasoline tank.

All gasoline fuels are more volatile today than ever before. They vaporize and build up pressure in your gasoline tank more easily than in the past. Winter grade gasoline is especially subject to vaporization and pressure build-up when used on hot Spring or Fall days. If you have a tractor which is out of tune or not properly maintained, it can run hotter and increase vaporization.

DANGER — Fire and personal injury.

If the fuel cap is removed when the gasoline tank is hot and vapor pressure has under certain circumstances built up in the tank, this sudden release of pressure could force gasoline out of the tank. If the gas cap is not fully secured and tightened, it could come off the tank, and again, gasoline could escape. This sudden eruption of gasoline exposes the operator to, and may cover him with, liquid fuel and vapors and is a clear fire hazard if a source of ignition is present. A running engine is a source of ignition, as are cigarettes, open flames, sparks or a poorly maintained exhaust system. **An immediate fire could occur.** The operator or anyone in the area could be burned and suffer serious injury or even death.

PRECAUTIONS — Observe the following steps for safe operation:

- Always tighten gas caps securely.
- Never, under any circumstances, take the gas cap off a hot or running tractor.
- Never hold over Winter gasoline for use in the Spring. Remove any equipment unnecessary for warm weather operations, such as comfort covers, heat housers, or radiator covers.
- Maintain equipment properly and pay particular attention to electrical, exhaust, fuel, and cooling systems. Repair or replace frayed electrical wires; leaky exhaust manifolds, gaskets, pipes and mufflers; damaged carburetors, sediment bowls and fuel lines. Be sure radiators are clean inside and out. Clean off any accumulation of trash, oil or grease.
- Make sure that fuel cap vent holes are not plugged, gaskets are in good condition, and that cap tangs are firmly riveted. Repair worn, bent, or deformed filler necks and damaged heat shields or shield insulation. If your tractor is not equipped with a heat shield or insulation, install such equipment on applicable models.
- Be alert to any unusual sights and sounds during operation. If you suspect overheating or pressure build-up in the fuel system, do not touch the cap. Turn off the engine and allow the tractor to cool before you touch the cap.

FREE GASOLINE CAP — See your dealer today.

International Harvester has developed a new gasoline cap designed to improve vapor venting and to inhibit the sudden eruption of liquid fuel if the safety precautions against cap removal are not observed.

New caps will be exchanged **free of charge** with owners of certain models of International Harvester farm tractors. To see whether your tractor already has the new cap or to arrange to obtain one, simply contact your local International Harvester dealer. Also ask him for a free International Harvester brochure "New Facts About Fuels" and for free "Warning" decals for all gasoline equipment.

Gasoline Tractor Models Included in Cap Exchange Program (See Note)			
A	100	*504	2404
AV	130	F-544 Only	2424
B	140	560	2444
BN	200	600	2504
C	230	*606	2544
H	240	650	*2606
HV	300	F-656 Only	2706
M	330	660	2756
MV	340	666	2806
O	350	686	2826
OS	400	706	2856
W	404	756	
WR	424	766	
70	444	806	
86	450	826	
	460	856	

NOTE: New cap will not fit on any of these tractors.

B-275	I-434
B-276	I-544
I -284	I-656
I -354	I-2656
B-414	

* New cap will not fit on these tractors above serial numbers shown.

F-504 above serial No. 13400
 I -504 above serial No. 14272
 I -606 above serial No. 6879
 I -2606 above serial No. 6879

New cap will not fit on any lawn and garden tractor in the Cadet model series or on any tractor with the gasoline tank behind the operator's seat.

CONTENTS

Description	Page No.
DELIVERY REPORT	1
INTRODUCTION	2, 3
DESCRIPTION	4, 5
INSTRUMENTS AND CONTROLS	6 to 9
BEFORE STARTING YOUR NEW TRACTOR	9, 10
PREPARING YOUR TRACTOR FOR EACH DAY'S WORK	11
DIESEL FUEL OIL SPECIFICATIONS	12
OPERATING THE GASOLINE ENGINE	13, 14
OPERATING THE DIESEL ENGINE	15 to 17
DRIVING THE TRACTOR	17 to 20
OPERATING THE TORQUE AMPLIFIER	21
OPERATING THE HYDRA-TOUCH SYSTEM	21 to 25
HITCHING AN IMPLEMENT TO THE TRACTOR	26
OPERATING THE POWER TAKE-OFF	27, 28
OPERATING THE BELT PULLEY	28, 29
FRONT WHEELS	30 to 34
REAR WHEELS	35 to 40
PNEUMATIC TIRES	41 to 43
FRONT BOLSTER WEIGHTS	44, 45
FRONT WHEEL WEIGHTS	46
REAR WHEEL WEIGHTS	46, 47
STARTING AND LIGHTING EQUIPMENT	48 to 56
COOLING SYSTEM	57, 58
COLD WEATHER PRECAUTIONS	58, 59
GENERAL ENGINE LUBRICATION	60
LUBRICATING OIL AND GREASE SPECIFICATIONS	61
LUBRICATION TABLE	62
LUBRICATION GUIDE	63 to 69
EXTRA EQUIPMENT AND ACCESSORIES	70
GROUND SPEEDS	70 to 72
SPECIFICATIONS	73 to 75
COMPREHENSIVE INDEX	76

INTRODUCTION

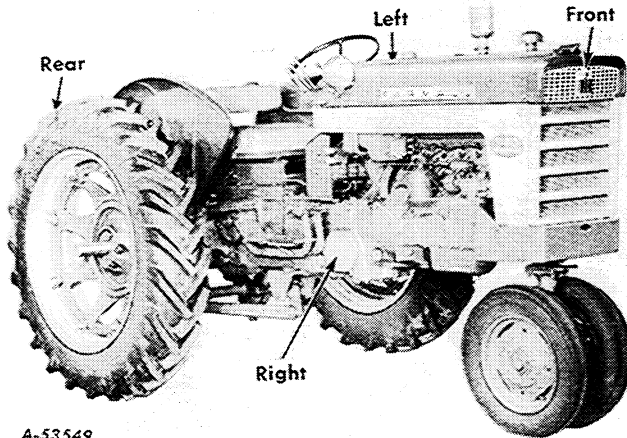
Assembled in this manual are operating and lubricating instructions for the Farmall 340 Series and the International 340 Series Utility Tractors. This material has been prepared in detail in the hope that it will help you to better understand the correct care and efficient operation of your tractor.

If you should need information not given in

this manual, or in the tractor Preventive Maintenance Manual, or if you should require the services of a trained mechanic, get in touch with the International Harvester dealer in your locality. Dealers are kept informed on the latest methods of servicing tractors. They carry stocks of IH parts, and are backed in every case by the full facilities of a nearby International Harvester District Office.

INTRODUCTION

Throughout this manual the use of the terms LEFT, RIGHT, FRONT, and REAR must be understood to avoid confusion when following instructions. LEFT and RIGHT indicate the left and right sides of the tractor when facing forward in the driver's seat. Reference to FRONT indicates the radiator end of the tractor; to REAR, the drawbar end. See Illust. 3.

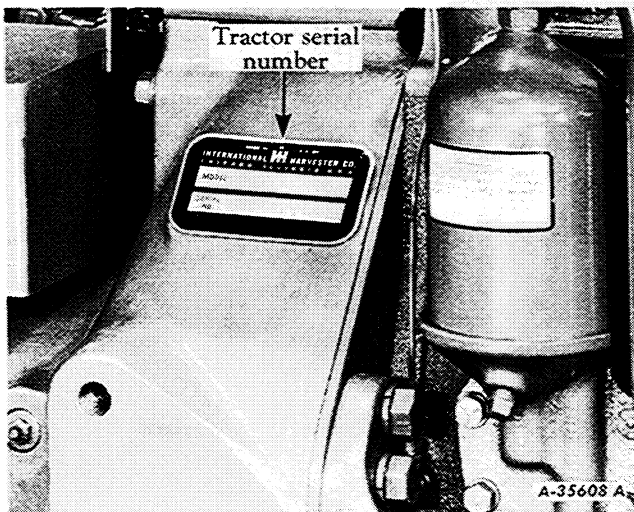


Illust. 3
Terms of location.

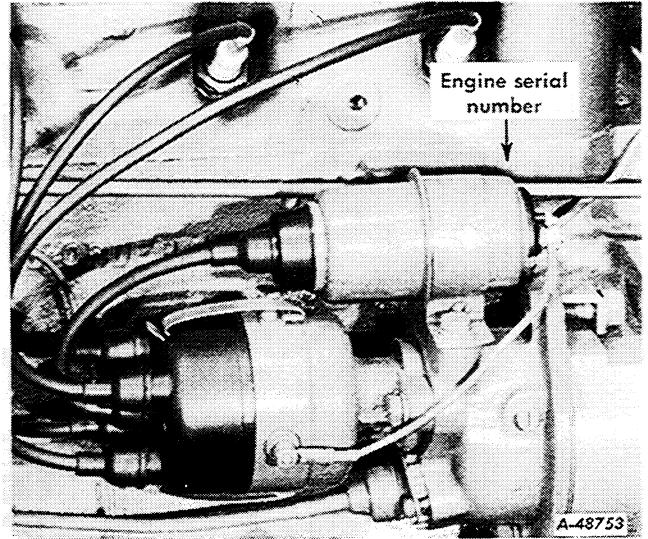
The illustrations in this manual are numbered to correspond with the pages on which they appear; for example, Illusts. 3, 3A, 3B, and 3C are on page 3.

In order to provide a tractor equipped as nearly as possible to suit each customer's needs, a variety of extra equipment and accessories is available. Refer to page 70.

Where operating and maintaining instruction on these items is required, it is included in the instructions for operating or maintaining the tractor. Disregard the instructions for equipment not on your tractor.



Illust. 3A
Location of tractor serial number.

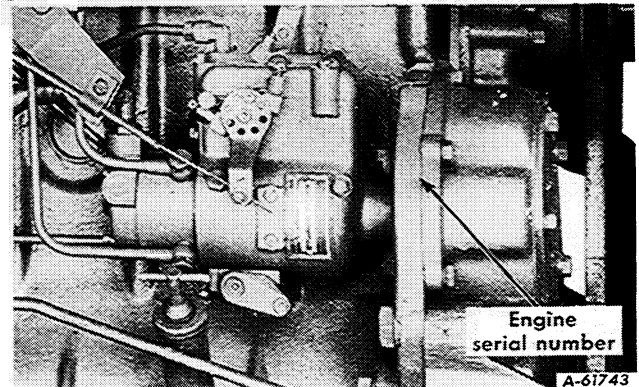


Illust. 3B
Location of gasoline engine serial number.

When in need of parts, always specify the tractor and engine serial numbers including prefix and suffix letters. For ready reference, we suggest that you write these serial numbers in the spaces provided on the Delivery Report. The tractor serial number is stamped on a name plate attached to the right side of the clutch housing. See Illust. 3A.

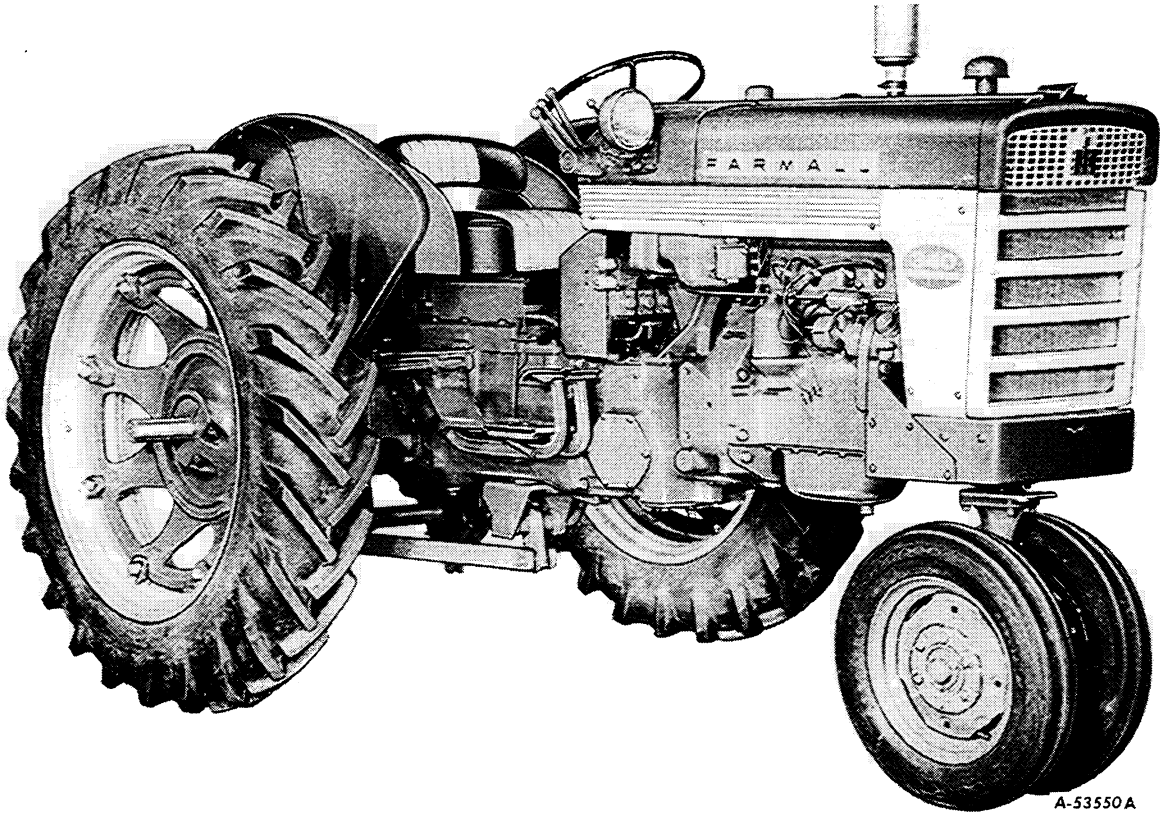
On gasoline engines, the engine serial number is stamped on the right side of the engine crankcase, above the battery ignition unit. This serial number is preceded by the prefix C-135, which indicates that it is a carbureted engine with a 135-cubic-inch piston displacement. See Illust. 3B.

On diesel engines, the engine serial number is stamped vertically on the right side of the engine mounting flange, approximately at the injection pump centerline. This serial number is preceded by the prefix D-166 which indicates it is a diesel engine with a 166-cubic-inch displacement. See Illust. 3C.

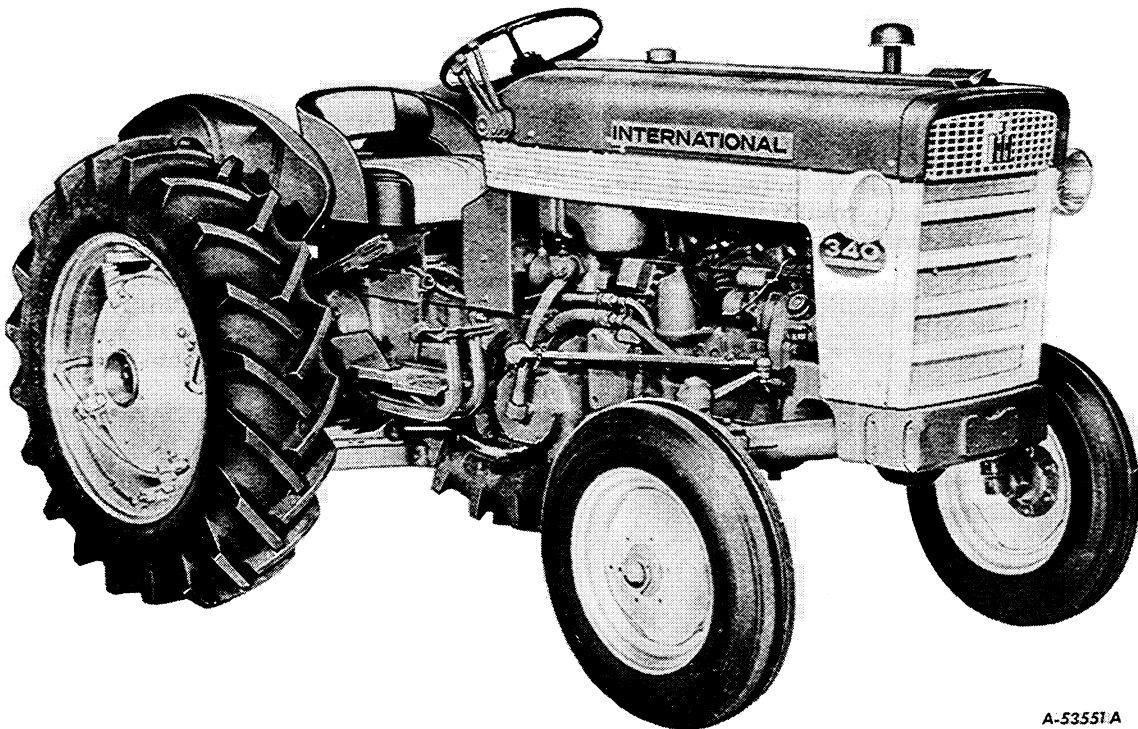


Illust. 3C
Location of diesel engine serial number.

DESCRIPTION

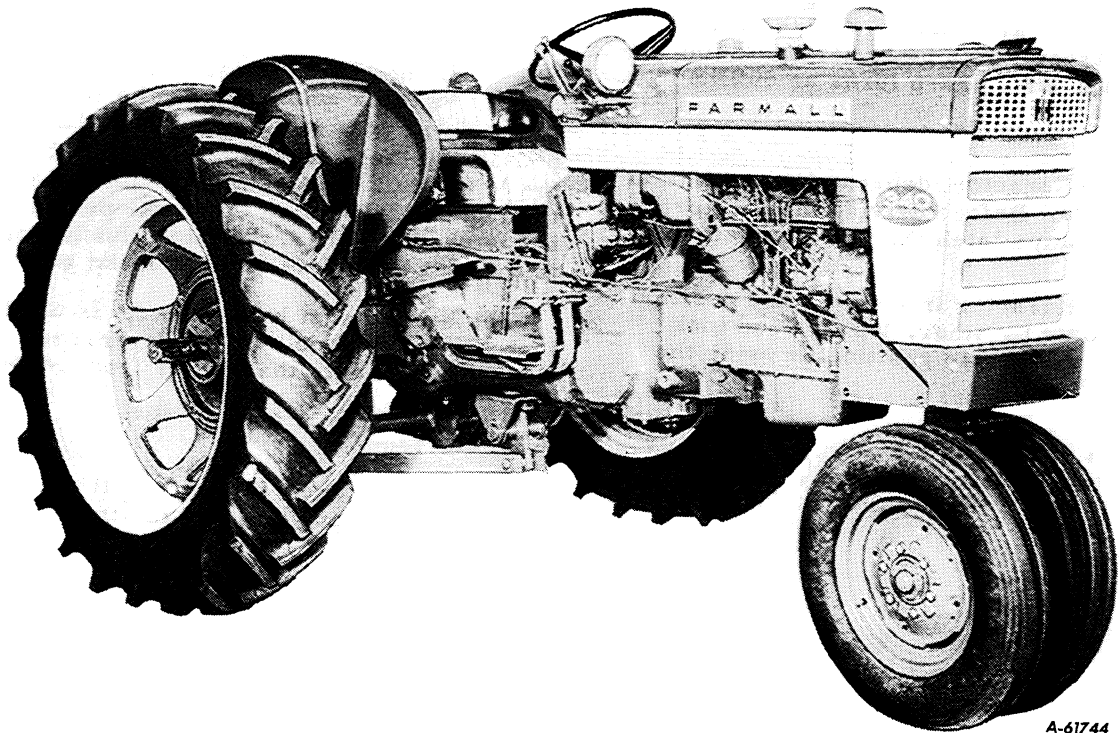


Illust. 4
Farmall 340 Tractor.

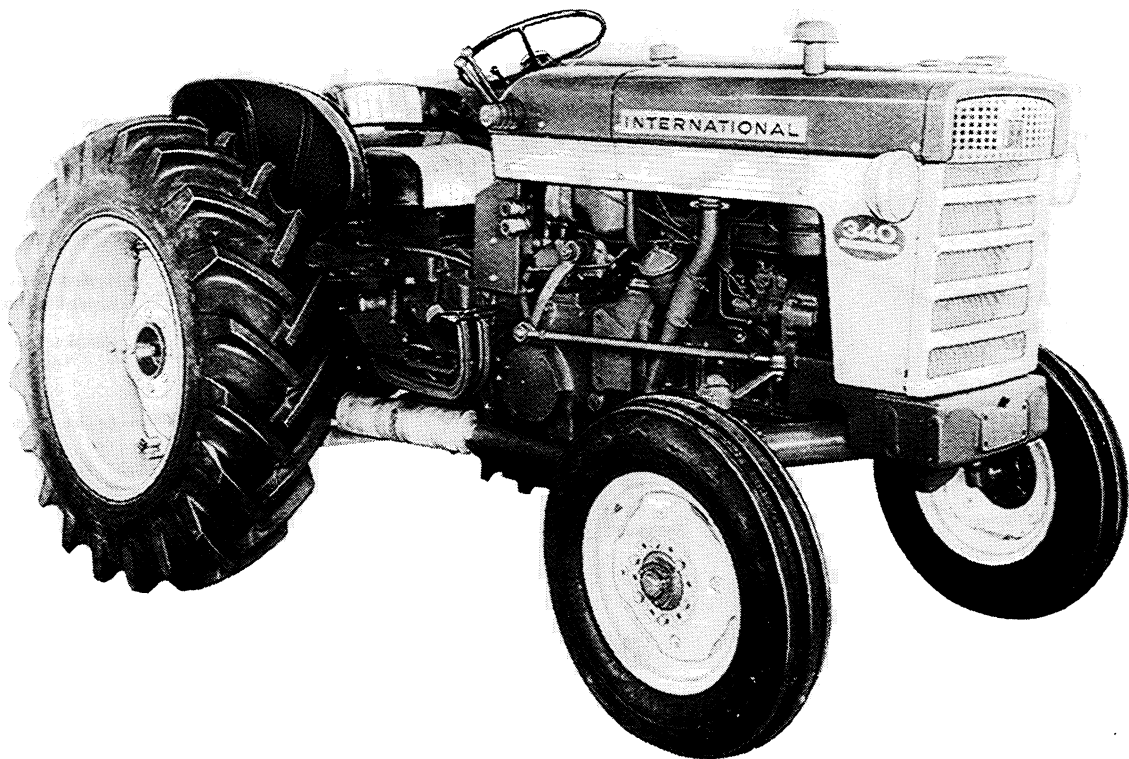


Illust. 4A
International 340 Utility Tractor.

DESCRIPTION



Illust. 5
Farmall 340 Diesel Tractor.



Illust. 5A
International 340 Diesel Utility Tractor.

Buy Now



Our support email:

ebooklibonline@outlook.com