

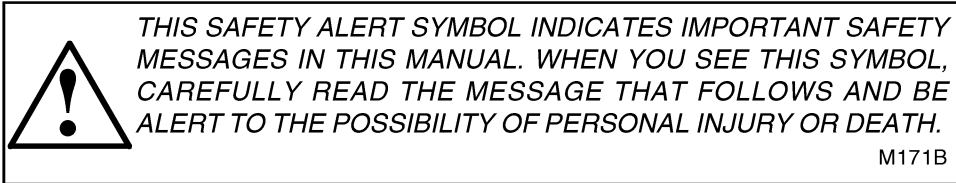
**International
460 Industrial Series
Tractor**

Operators Manual

1014204R3

Reprinted








If Safety Decals on this machine use the words **Danger, Warning or Caution**, which are defined as follows:

- **DANGER:** Indicates an immediate hazardous situation which if not avoided, will result in death or serious injury. The color associated with Danger is RED.
- **WARNING:** Indicates an potentially hazardous situation which if not avoided, will result in serious injury. The color associated with Warning is ORANGE.
- **CAUTION:** Indicates an potentially hazardous situation which if not avoided, may result in minor or moderate injury. It may also be used to alert against unsafe practices. The color associated with Caution is YELLOW.

If Safety Decals on this machine are ISO two panel Pictorial, decals are defined as follows:

- The first panel indicates the nature of the hazard.
- The second panel indicates the appropriate avoidance of the hazard.
- Background color is YELLOW.
- Prohibition symbols such as   and  if used, are RED.



WARNING

IMPROPER OPERATION OF THIS MACHINE CAN CAUSE INJURY OR DEATH. BEFORE USING THIS MACHINE, MAKE CERTAIN THAT EVERY OPERATOR:

- Is instructed in safe and proper use of the machine.
- Reads and understands the Manual(s) pertaining to the machine.
- Reads and understands ALL Safety Decals on the machine.
- Clears the area of other persons.
- Learns and practices safe use of machine controls in a safe, clear area before operating this machine on a job site.

It is your responsibility to observe pertinent laws and regulations and follow Case Corporation instructions on machine operation and maintenance.

**IMPORTANT FUEL SYSTEM SAFETY WARNING
AND
ANNOUNCEMENT OF FREE, REPLACEMENT GASOLINE CAP**



CAUTION! The following information pertains to personal safety. Be sure to read and follow these instructions.

PROBLEM — Gasoline vapors can build up pressure in your gasoline tank.

All gasoline fuels are more volatile today than ever before. They vaporize and build up pressure in your gasoline tank more easily than in the past. Winter grade gasoline is especially subject to vaporization and pressure build-up when used on hot Spring or Fall days. If you have a tractor which is out of tune or not properly maintained, it can run hotter and increase vaporization.

DANGER — Fire and personal injury.

If the fuel cap is removed when the gasoline tank is hot and vapor pressure has, under certain circumstances, built up in the tank, this sudden release of pressure could force gasoline out of the tank. If the gas cap is not fully secured and tightened, it could come off the tank, and again, gasoline could escape. This sudden eruption of gasoline exposes the operator to, and may cover him with, liquid fuel and vapors and is a clear fire hazard if a source of ignition is present. A running engine is a source of ignition, as are cigarettes, open flames, sparks or a poorly maintained exhaust system. **An immediate fire could occur.** The operator or anyone in the area could be burned and suffer serious injury or even death.

PRECAUTIONS — Observe the following steps for safe operation:

- Always tighten gas caps securely.
- Never, under any circumstances, take the gas cap off a hot or running tractor.
- Never hold over Winter gasoline for use in the Spring. Remove any equipment unnecessary for warm weather operations, such as comfort covers, heat housers, or radiator covers.
- Maintain equipment properly and pay particular attention to electrical, exhaust, fuel, and cooling systems. Repair or replace frayed electrical wires; leaky exhaust manifolds, gaskets, pipes and mufflers; damaged carburetors, sediment bowls and fuel lines. Be sure radiators are clean inside and out. Clean off any accumulation of trash, oil or grease.
- Make sure that fuel cap vent holes are not plugged, gaskets are in good condition, and that cap tangs are firmly riveted. Repair worn, bent, or deformed filler necks and damaged heat shields or shield insulation. If your tractor is not equipped with a heat shield or insulation, install such equipment on applicable models.
- Be alert to any unusual sights and sounds during operation. If you suspect overheating or pressure build-up in the fuel system, do not touch the cap. Turn off the engine and allow the tractor to cool before you touch the cap.

FREE GASOLINE CAP — See your dealer today.

International Harvester has developed a new gasoline cap designed to improve vapor venting and to inhibit the sudden eruption of liquid fuel if the safety precautions against cap removal are not observed.

New caps will be exchanged **free of charge** with owners of certain models of International Harvester farm tractors. To see whether your tractor already has the new cap or to arrange to obtain one, simply contact your local International Harvester dealer. Also ask him for a free International Harvester brochure "New Facts About Fuels" and for free "Warning" decals for all gasoline equipment.

Gasoline Tractor Models Included in Cap Exchange Program (See Note)			
A	100	*504	2404
AV	130	F-544 Only	2424
B	140	560	2444
BN	200	600	2504
C	230	*606	2544
H	240	650	*2606
HV	300	F-656 Only	2706
M	330	660	2756
MV	340	666	2806
O	350	686	2826
OS	400	706	2856
W	404	756	
WR	424	766	
70	444	806	
86	450	826	
	460	856	

NOTE: New cap **will not** fit on any of these tractors.

B-275	I-434
B-276	I-544
I -284	I-656
I -354	I-2656
B-414	

* New cap **will not** fit on these tractors above serial numbers shown.

F-504 above serial No. 13400
I -504 above serial No. 14272
I -606 above serial No. 6879
I -2606 above serial No. 6879

New cap **will not** fit on any lawn and garden tractor in the Cadet model series or on any tractor with the gasoline tank behind the operator s seat.

To The Owner

Your new International Harvester tractor is designed to meet today's exacting operating requirements. The ease and comfort of operation, the ability to match ground speeds to engine power and work requirement, and the effortless versatility of the hydraulic system are intended to lighten your work and shorten your hours on the job.

Your local International Harvester dealer is interested in the performance you receive from this tractor. He has factory-trained servicemen, informed in the latest method of servicing tractors, and modern tools, and original-equipment IH service parts which assure proper fit and good performance.

To obtain top performance and assure economical operation the tractor should be inspected, depending on its use, periodically, or at least once a year, by your International Harvester Dealer.

Before you operate the tractor, study this manual carefully. It has been prepared to help you operate and maintain your tractor with utmost efficiency. New copies may be ordered from your dealer at a nominal price.

When in need of parts, always specify the tractor and engine serial numbers, including prefix and suffix letters. Write these serial numbers in the spaces provided on the Delivery Report.

CONTENTS

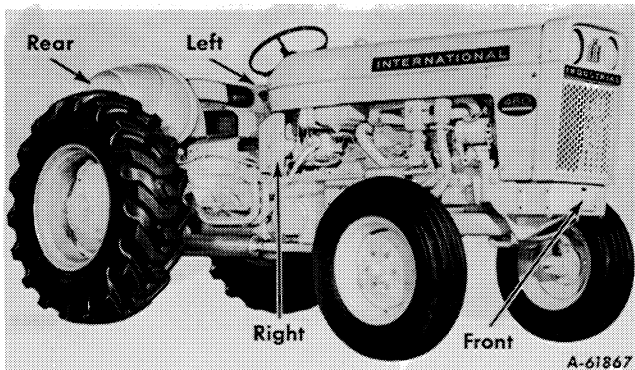
Description	Page No.
DELIVERY REPORT.	1
INTRODUCTION	3
DESCRIPTION.	4
INSTRUMENTS AND CONTROLS	5 to 8
BEFORE STARTING YOUR NEW TRACTOR	9
PREPARING YOUR TRACTOR FOR EACH DAY'S WORK . .	10
DIESEL FUEL OIL SPECIFICATIONS.	11
OPERATING THE GASOLINE ENGINE	12, 13
OPERATING THE DIESEL ENGINE	14 to 16
DRIVING THE TRACTOR	17 to 19
OPERATING THE TORQUE AMPLIFIER.	20
OPERATING THE HYDRA-TOUCH SYSTEM	21 to 24
HITCHING THE EQUIPMENT TO THE TRACTOR.	25
OPERATING THE POWER TAKE-OFF.	26, 27
OPERATING THE BELT PULLEY.	27, 28
WHEELS	29 to 38
WEIGHTS	35 to 37
PNEUMATIC TIRES.	42 to 44
STARTING AND LIGHTING EQUIPMENT	41 to 46
COOLING SYSTEM.	46 to 48
COLD WEATHER PRECAUTIONS.	48, 49
GENERAL ENGINE LUBRICATION.	50
LUBRICATING OIL AND GREASE SPECIFICATIONS	51
LUBRICATION TABLE.	52
LUBRICATION GUIDE.	53 to 56
EXTRA EQUIPMENT AND ACCESSORIES	64
SPECIFICATIONS.	57 to 63
INDEX.	65 to 67

INTRODUCTION

Assembled in this manual are operating and lubrication instructions for the International 460 and 460 Diesel Industrial Tractors. This material has been prepared in detail in the hope that it will help you to better understand the correct care and efficient operation of your tractor.

If you should need information not given in this manual, or in the tractor Preventive Maintenance Manual, or require the services of a trained mechanic, get in touch with the International Harvester dealer in your locality. Dealers are kept informed on the latest methods of servicing tractors. They carry stocks of IH parts, and are backed in every case by the full facilities of a nearby International Harvester District Office.

Throughout this manual the use of the terms LEFT, RIGHT, FRONT, and REAR must be understood to avoid confusion when following instructions. LEFT and RIGHT indicate the left and right sides of the tractor when facing forward in the driver's seat. Reference to FRONT indicates the radiator end of the tractor; to REAR, the drawbar end.



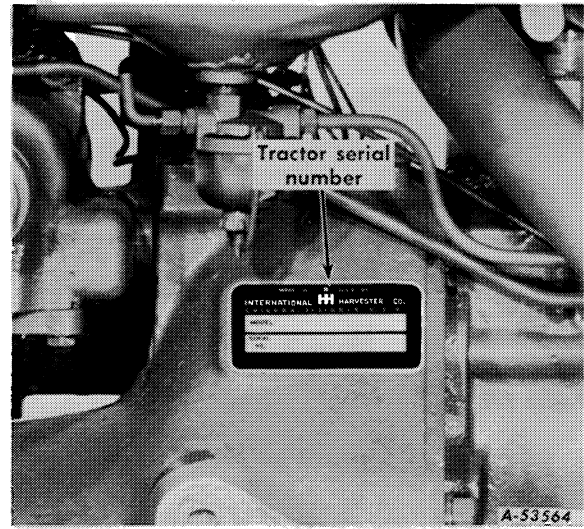
Illust. 3

The illustrations in this manual are numbered to correspond with the pages on which they appear; for example, Illusts. 3 and 3A are on page 3.

In order to provide a tractor equipped as nearly as possible to suit each customer's needs, a variety of extra equipment and accessories is available. For a list of the extra equipment and accessories available, see page 61.

Where operating and maintaining instruction on these items is required, it is included in the instructions in the Operator's or Preventive Maintenance Manuals. Disregard the instructions for equipment not on your tractor.

When in need of parts, always specify the tractor and engine serial numbers including prefix and suffix letters. The tractor serial number is stamped on a name plate attached to the right side of the clutch housing. See Illust. 3A.

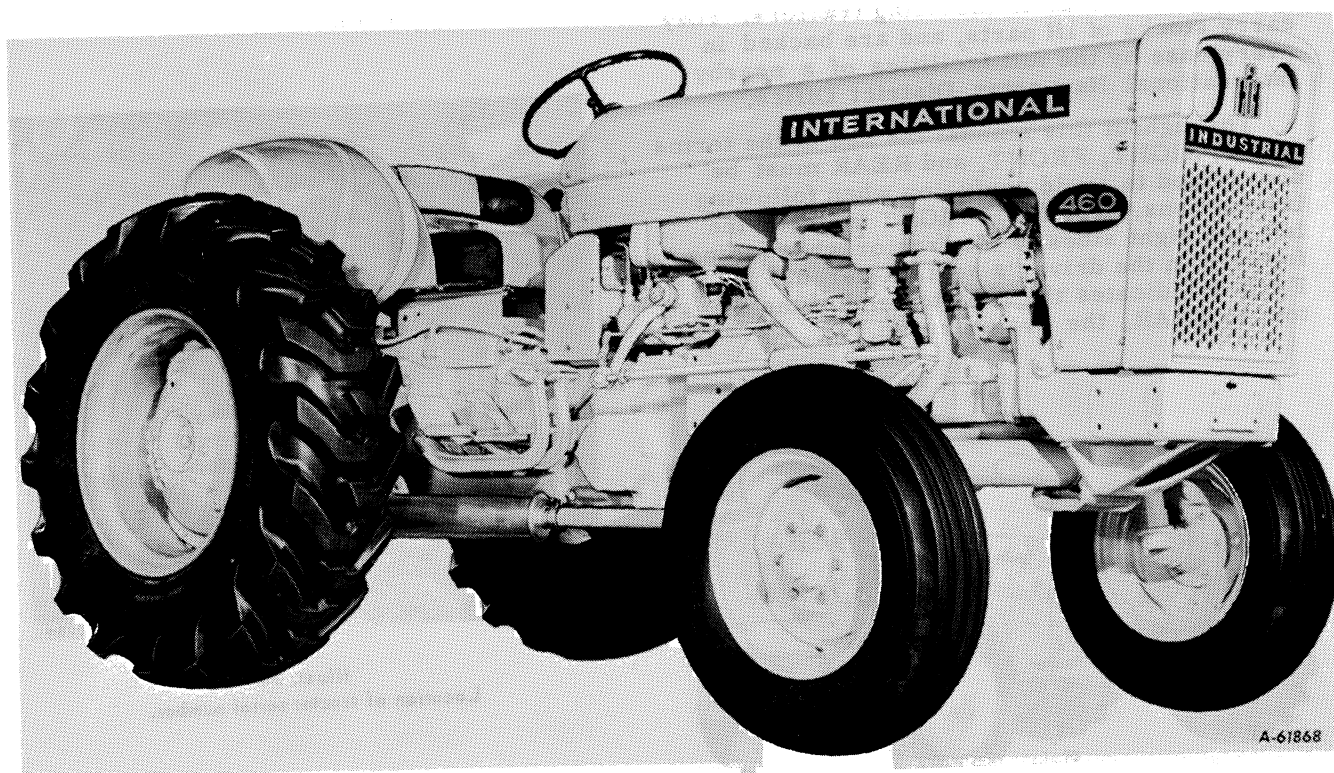


Illust. 3A
Location of tractor serial number.

The engine serial number is stamped on the left side of the engine crankcase on a pad below the distributor housing on gasoline engines or below the oil pump shaft support on diesel engines. This serial number is preceded by the prefix C-221, which indicates that it is a carbureted engine with a 221-cubic-inch piston displacement, or D-236 which indicates it is a diesel engine with 236-cubic-inch piston displacement.

For ready reference, we suggest that you write these serial numbers in the spaces provided on the Delivery Report.

DESCRIPTION



A-61868

Illust. 4

Right front view of the International 460 Industrial Tractor with gasoline engine.

INSTRUMENTS AND CONTROLS

BRAKE PEDALS

These pedals are used to stop the tractor, to hold the tractor in a stationary position, or to assist in making sharp turns as outlined below:

To stop the tractor, depress both pedals at the same time. Before driving the tractor in high gear, always latch the pedals together.

To hold the tractor in a stationary position, latch the pedals together, depress and lock them in this depressed position by using the brake pedal lock.

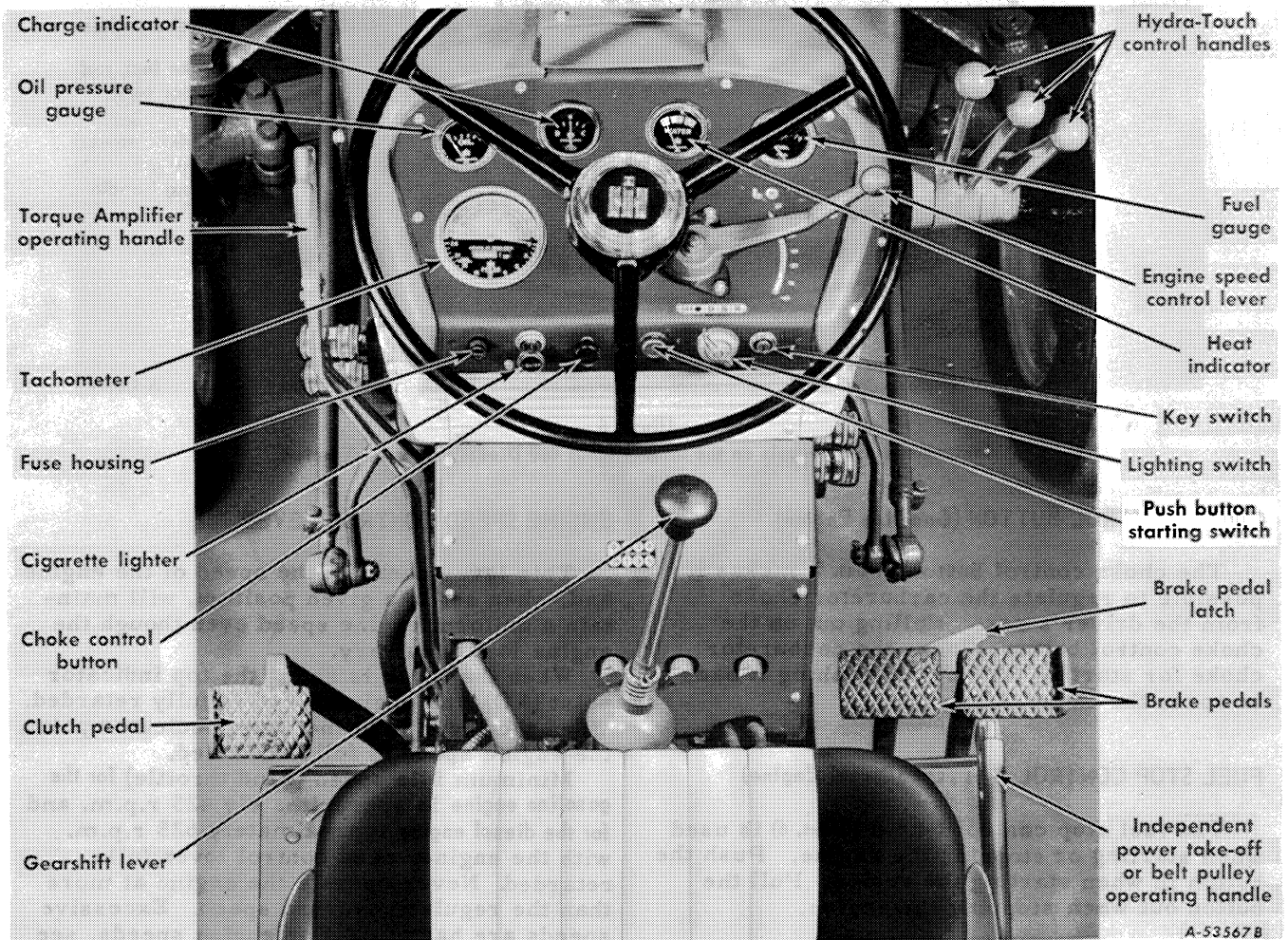
To assist in making a sharp turn, operate the pedals individually, depressing the pedal on the side toward which the turn is to be made.

The brake pedal latch (Illusts. 5, 6 and 19) is used to latch both brake pedals together, causing the brakes to operate simultaneously.

Caution! Always latch the brake pedals together when driving the tractor in high gear (fifth speed).

To latch the pedals together, engage the latch (located on the back of the left pedal) (Illust. 19) in the slot in the back of the right pedal. When the brake pedals are not latched together, the latch should rest in the slot in the back of the left brake pedal.

The brake pedal lock (Illust. 19) is used to lock the brake pedals in the depressed position; this prevents the tractor from moving.



Illust. 5
Instruments and controls on the International 460 Industrial Tractor.

Buy Now



Our support email:

ebooklibonline@outlook.com