

4100 Tractor

Operators Manual

1082532R4

Reprinted





This symbol means ATTENTION! BECOME ALERT! YOUR SAFETY IS INVOLVED. The message that follows the symbol contains important information about your safety. Carefully read the message. Make sure you fully understand the causes of possible injury or death.

SB001

IF THIS MACHINE IS USED BY AN EMPLOYEE, IS LOANED, OR IS RENTED, MAKE SURE THAT THE OPERATOR UNDERSTANDS THE TWO INSTRUCTIONS BELOW.

BEFORE THE OPERATOR STARTS THE ENGINE:

1. GIVE INSTRUCTIONS TO THE OPERATOR ON SAFE AND CORRECT USE OF THE MACHINE.
2. MAKE SURE THE OPERATOR READS AND UNDERSTANDS THE OPERATOR'S MANUAL FOR THIS MACHINE.



IMPROPER OPERATION OF THIS MACHINE CAN CAUSE INJURY OR DEATH.

BEFORE STARTING THE ENGINE, DO THE FOLLOWING:

1. READ THE OPERATOR'S MANUAL.
2. READ ALL SAFETY DECALS ON THE MACHINE.
3. CLEAR THE AREA OF OTHER PERSONS.

LEARN AND PRACTICE SAFE USE OF MACHINE CONTROLS IN A SAFE, CLEAR AREA BEFORE YOU OPERATE THIS MACHINE ON A JOB SITE.

It is your responsibility to observe pertinent laws and regulations and to follow manufacturer's instructions on machine operation and maintenance.

See your Authorized Case dealer for additional operator's manuals, parts catalogs, and service manuals.

To The Owner

Assembled in this manual are operation, lubrication, and maintenance instructions for the International 4100 Four-Wheel Drive Tractor. This material has been prepared in detail in the hope that it will help you to better understand the correct care and efficient operation of your tractor.

Your new International Harvester tractor is designed to meet today's exacting operating requirements. The ease and comfort of operation, the ability to match ground speeds to engine power and work requirement, and the effortless versatility of the hydraulic system are intended to lighten your work and shorten your hours on the job.

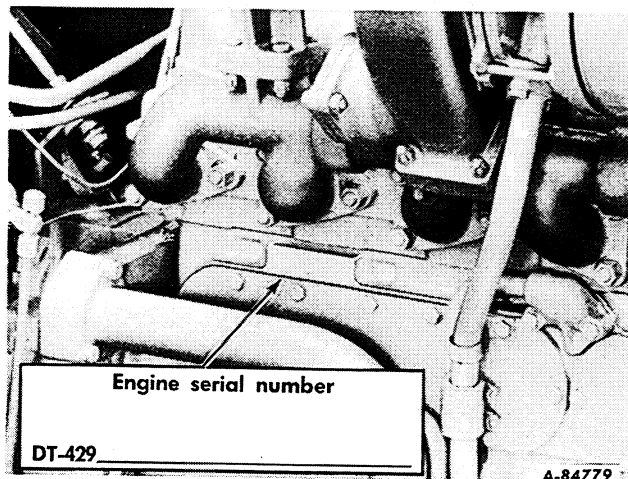
Your local International Harvester dealer is interested in the performance you receive from this tractor. He has factory-trained servicemen, informed in the latest method of servicing tractors, and modern tools, and original-equipment IH service parts which assure proper fit and good performance.

To obtain top performance and assure economical operation the tractor should be inspected, depending on its use, periodically, or at least once a year, by your International Harvester Dealer.

Before you operate the tractor study this manual carefully. It has been prepared to help you operate and maintain your tractor with utmost efficiency. New copies may be ordered from your dealer at a nominal price.

When in need of parts, always specify the tractor and engine serial numbers, including prefix and suffix letters. Write these serial numbers in the spaces provided below.

Note: When transporting a unit, seal the intake and exhaust pipe openings to prevent the entrance of foreign materials.



CONTENTS

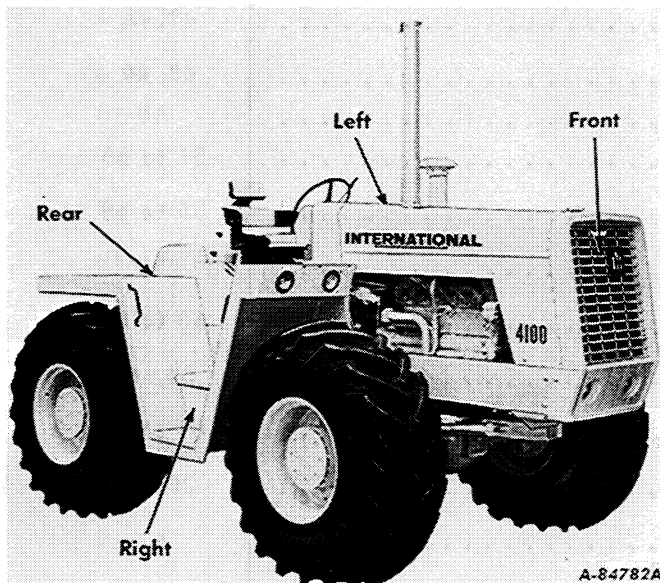
Description	Page No.
CONTENTS	1
INTRODUCTION	2
INSTRUMENTS AND CONTROLS	3
BEFORE OPERATING YOUR NEW TRACTOR	4
DRIVING THE TRACTOR	5 to 7
ENGINE AND FUEL SYSTEM	7 to 13
BASIC HYDRAULIC SYSTEM WITH POWER STEERING	13 to 15
HYDRAULIC CONTROLS FOR THREE-POINT HITCH	15, 16
THREE-POINT HITCH	16 to 19
AUXILIARY VALVES AND REMOTE CYLINDERS	22, 23
HITCHING TRAILING EQUIPMENT TO THE TRACTOR	24
POWER TAKE-OFF	25
COOLING SYSTEM	25 to 28
AIR CLEANING SYSTEM	28 to 31
ELECTRICAL SYSTEM	31 to 39
MINOR ENGINE SERVICE OPERATIONS	40 to 42
STEERING, WHEELS, AND PNEUMATIC TIRES	43
WEIGHTS	44 to 46
BRAKES	46, 47
ENGINE CLUTCH	47, 48
STORING THE TRACTOR	48, 49
COLD WEATHER PRECAUTIONS	50
TROUBLE SHOOTING	51 to 55
LUBRICATION	55 to 59
LUBRICATION TABLE	59
LUBRICATION GUIDE	60 to 63
PREVENTIVE MAINTENANCE GUIDE	64, 65
SPECIFICATIONS	65 to 67
QUICK COUPLER	20, 21
EXTRA EQUIPMENT AND ACCESSORIES	67
INDEX	68, 69

INTRODUCTION



A-84781

Illust. 2
International 4100 Four-Wheel Drive Tractor.



A-84782A

Illust. 2A
Terms of location.

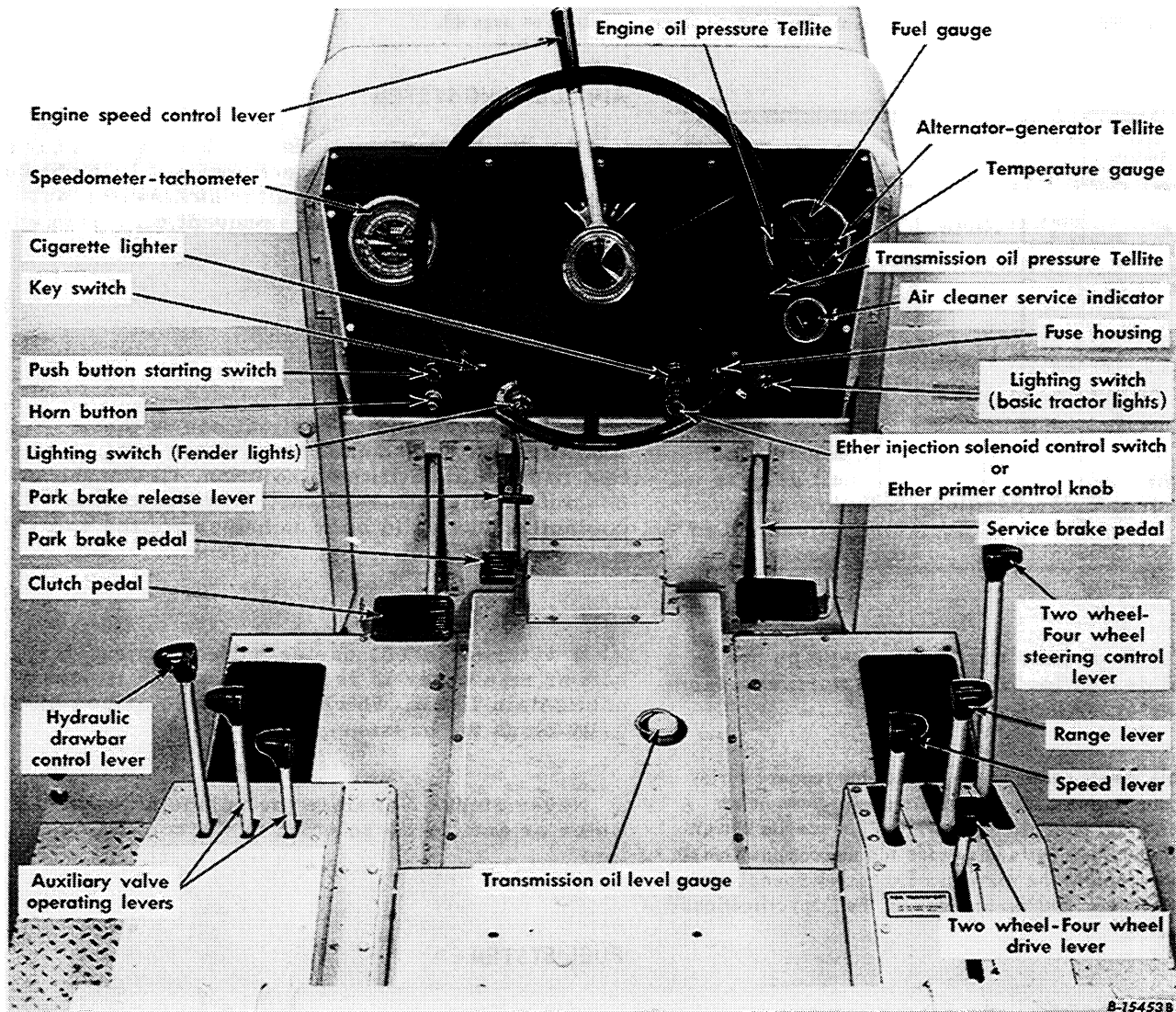
LEFT and RIGHT indicate the left and right sides of the tractor when facing forward in the driver's seat. See Illust. 2A.

The illustrations in this manual are numbered to correspond with the pages on which they appear; for example, Illusts. 2 and 2A are on page 2.

A variety of extra equipment and accessories is available. Refer to page 67. Operating and maintenance instruction on these items is included in the instructions for operating or Maintaining the tractor.

INSTRUMENTS AND CONTROLS

Before attempting to start or operate the tractor, be sure to review all the instructions for the new tractor and thoroughly familiarize yourself with the instruments and controls.



Illust. 3
Instruments and controls.

Air cleaner service indicator (page 29)
 Alternator-generator Tellite (page 38)
 Auxiliary valve operating levers (pages 3 and 23)
 Cigarette lighter (page 3)
 Clutch pedal (pages 3 and 48)
 Engine oil pressure Tellite (pages 3 and 38)
 Engine speed control lever (pages 10 and 11)
 Ether injection solenoid control switch or primer control knob (pages 3 and 10)
 Fuel gauge (pages 3 and 5)
 Fuse housing (pages 38 and 39)
 Horn button (page 3)
 Hydraulic drawbar control lever (pages 3 and 24)
 Key switch (pages 3 and 31)

Lighting switch (fender lights) (pages 3 and 37)
 Lighting switch (basic tractor lights) (pages 3 and 37)
 Park brake pedal (pages 7 and 47)
 Park brake release lever (page 7)
 Push button starting switch (pages 3, 10 and 24)
 Range lever (page 6)
 Service brake pedal (pages 7, 14 and 47)
 Speed lever (page 6)
 Speedometer-Tachometer (page 6)
 Temperature gauge (page 25)
 Transmission oil level gauge (pages 3 and 56)
 Transmission oil pressure Tellite (pages 3 and 38)
 Two-Wheel Four-Wheel drive lever (page 6)
 Two-Wheel Four-Wheel steering control lever (pages 6 and 7)

BEFORE OPERATING YOUR NEW TRACTOR

TRACTOR BREAK-IN PROCEDURE

Never operate an engine immediately under full load, break it in carefully as shown in the table below. Do not overload the engine at any time.

Period	Engine r.p.m.	Load	Remarks
1st hour	3/4 of rated	None	Operate tractor in the higher gears.
2nd and 3rd hours	3/4 of rated	Light	Operate tractor two full gear speeds below normal for load connected to drawbar.
4th through 25th hours	Full	Medium	Operate tractor one full gear speed below normal for load connected to drawbar.

All parts of your new tractor are of matched design for maximum performance as shown under "Specifications".

Any attempt to increase the engine horsepower by increasing engine r.p.m. above its rated maximum, or by other means, not only affects traveling speeds but affects the life of matching parts and voids the company responsibility as outlined in the warranty. Excessive speeds are harmful. Refer to "Engine Speeds" in the "Specifications" on page 66.

LUBRICATION

Check to see that the entire tractor has been properly lubricated. Refer to the "Lubrication Guide" on pages 60 to 63.

Note: These tractors have a dry-type air cleaner. Do not put oil in the air cleaner.

PNEUMATIC TIRES

Before moving the tractor, check the air

pressure in the pneumatic tires and inflate or deflate to the pressures recommended in the tables on page 43.

AIR CLEANING SYSTEM

Inspect the flexible rubber hose connections, the air cleaner and turbocharger. All joints between the air cleaner and turbocharger manifold must be kept tight to prevent dirt from entering the engine.

ENGINE COOLING SYSTEM

Tractors shipped to destinations in the United States and Canada have the cooling system filled with antifreeze solution. Check the coolant level in the radiator. When cold, the coolant level should be 3 inches above the radiator core.

If water is added, use only clean water; soft or rain water is recommended, as it does not contain alkali, which forms scale and eventually clogs the passages.

Never start or operate the engine without water or antifreeze solution in the cooling system.

FUEL SYSTEM

Use filtered diesel fuel free from foreign substances. Do not use dirty fuel.

Consult your International Harvester dealer or fuel supplier for the diesel fuels, which will give the most satisfactory performance in your International engine. See the table showing the limiting requirements for diesel fuels recommended for use in International diesel engines on page 7.

INSTRUMENTS AND CONTROLS

Thoroughly acquaint yourself with all instruments and controls.

Buy Now



Our support email:

ebooklibonline@outlook.com