

1256 Turbo Diesel Tractor

Operators Manual

1082651R2

Reprinted

CASE III



This symbol means ATTENTION! BECOME ALERT! YOUR SAFETY IS INVOLVED. The message that follows the symbol contains important information about your safety. Carefully read the message. Make sure you fully understand the causes of possible injury or death.

SB001

IF THIS MACHINE IS USED BY AN EMPLOYEE, IS LOANED, OR IS RENTED, MAKE SURE THAT THE OPERATOR UNDERSTANDS THE TWO INSTRUCTIONS BELOW.

BEFORE THE OPERATOR STARTS THE ENGINE:

1. GIVE INSTRUCTIONS TO THE OPERATOR ON SAFE AND CORRECT USE OF THE MACHINE.
2. MAKE SURE THE OPERATOR READS AND UNDERSTANDS THE OPERATOR'S MANUAL FOR THIS MACHINE.



IMPROPER OPERATION OF THIS MACHINE CAN CAUSE INJURY OR DEATH.

BEFORE STARTING THE ENGINE, DO THE FOLLOWING:

1. READ THE OPERATOR'S MANUAL.
2. READ ALL SAFETY DECALS ON THE MACHINE.
3. CLEAR THE AREA OF OTHER PERSONS.

LEARN AND PRACTICE SAFE USE OF MACHINE CONTROLS IN A SAFE, CLEAR AREA BEFORE YOU OPERATE THIS MACHINE ON A JOB SITE.

It is your responsibility to observe pertinent laws and regulations and to follow manufacturer's instructions on machine operation and maintenance.

See your Authorized Case dealer for additional operator's manuals, parts catalogs, and service manuals.



OPERATOR'S MANUAL

INTERNATIONAL[®]

1256

**TURBO DIESEL
Tractor**

**OPERATION
MAINTENANCE
LUBRICATION**



To The Owner

Assembled in this manual are operation, lubrication, and maintenance instructions for the Farmall and International 1256 Turbo Diesel Tractors, including the All-Wheel Drive model. This material has been prepared in detail in the hope that it will help you to better understand the correct care and efficient operation of your tractor.

Your new International Harvester tractor is designed to meet today's exacting operating requirements. The ease and comfort of operation, the ability to match ground speeds to engine power and work requirement, and the effortless versatility of the hydraulic system are intended to lighten your work and shorten your hours on the job.

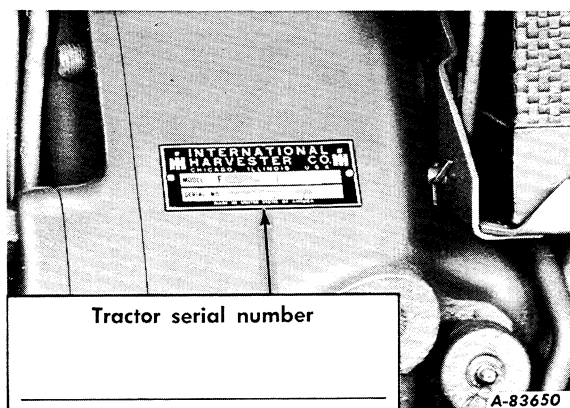
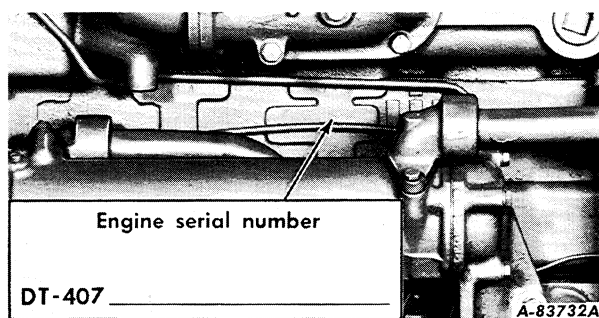
Your local International Harvester dealer is interested in the performance you receive from this tractor. He has factory-trained servicemen, informed in the latest method of servicing tractors, and modern tools, and original-equipment IH service parts which assure proper fit and good performance.

To obtain top performance and assure economical operation the tractor should be inspected, depending on its use, periodically, or at least once a year, by your International Harvester Dealer.

Before you operate the tractor study this manual carefully. It has been prepared to help you operate and maintain your tractor with utmost efficiency. New copies may be ordered from your dealer at a nominal price.

When in need of parts, always specify the tractor and engine serial numbers, including prefix and suffix letters. Write these serial numbers in the spaces provided below.

Note: When transporting a unit equipped with a turbocharger on a high speed carrier, seal the intake and exhaust pipe openings to prevent turbocharger damage.



CONTENTS

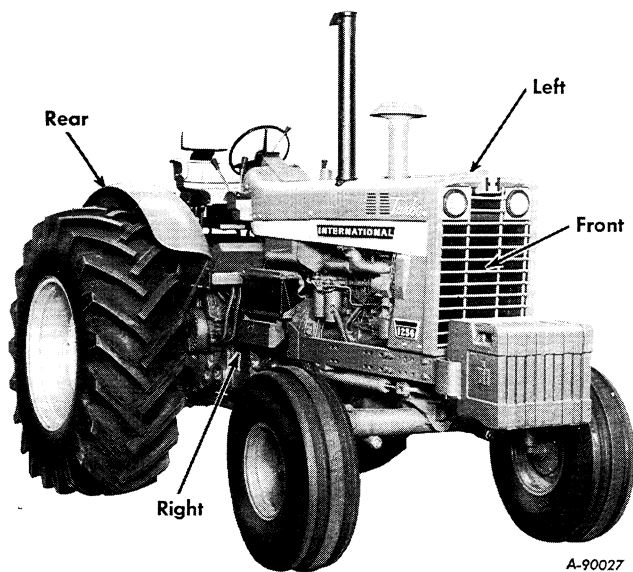
Description	Page No.
CONTENTS	1
INTRODUCTION	2
INSTRUMENTS AND CONTROLS	3
BEFORE OPERATING YOUR NEW TRACTOR	4
DRIVING THE TRACTOR	4 to 9
ENGINE AND FUEL SYSTEM	9 to 16
TORQUE AMPLIFIER	17
BASIC HYDRAULIC SYSTEM WITH POWER STEERING	18 to 20
HYDRAULIC CONTROLS FOR THREE-POINT FAST-HITCH	20 to 21
THREE-POINT HITCH	24 to 30
AUXILIARY VALVES AND REMOTE CYLINDERS	33 to 36
HITCHING TRAILING EQUIPMENT TO THE TRACTOR	37, 38
POWER TAKE-OFF	39
COOLING SYSTEM	40 to 42
AIR CLEANING SYSTEM	42 to 46
ELECTRICAL SYSTEM	47 to 56
MINOR ENGINE OPERATIONS	56 to 58
FRONT WHEELS	59 to 61
ALL-WHEEL DRIVE	61, 62
REAR WHEELS	63 to 68
WEIGHTS	69 to 71
PNEUMATIC TIRES	71 to 74
BRAKES	74, 75
ENGINE CLUTCH	76, 77
STORING THE TRACTOR	77, 78
COLD WEATHER PRECAUTIONS	79, 80
TROUBLE SHOOTING	80 to 85
LUBRICATION	85 to 90
LUBRICATION TABLE	90
LUBRICATION GUIDE	91 to 96
PREVENTIVE MAINTENANCE GUIDE	97 to 99
QUICK COUPLER	31, 32
SPECIFICATIONS	99 to 102
EXTRA EQUIPMENT AND ACCESSORIES	103
INDEX	104 to 106

INTRODUCTION



A-90079

Illust. 2
Farmall 1256 Turbo Diesel Tractor with Cab and Dual Rear Wheels



A-90027

Illust. 2A
Terms of location

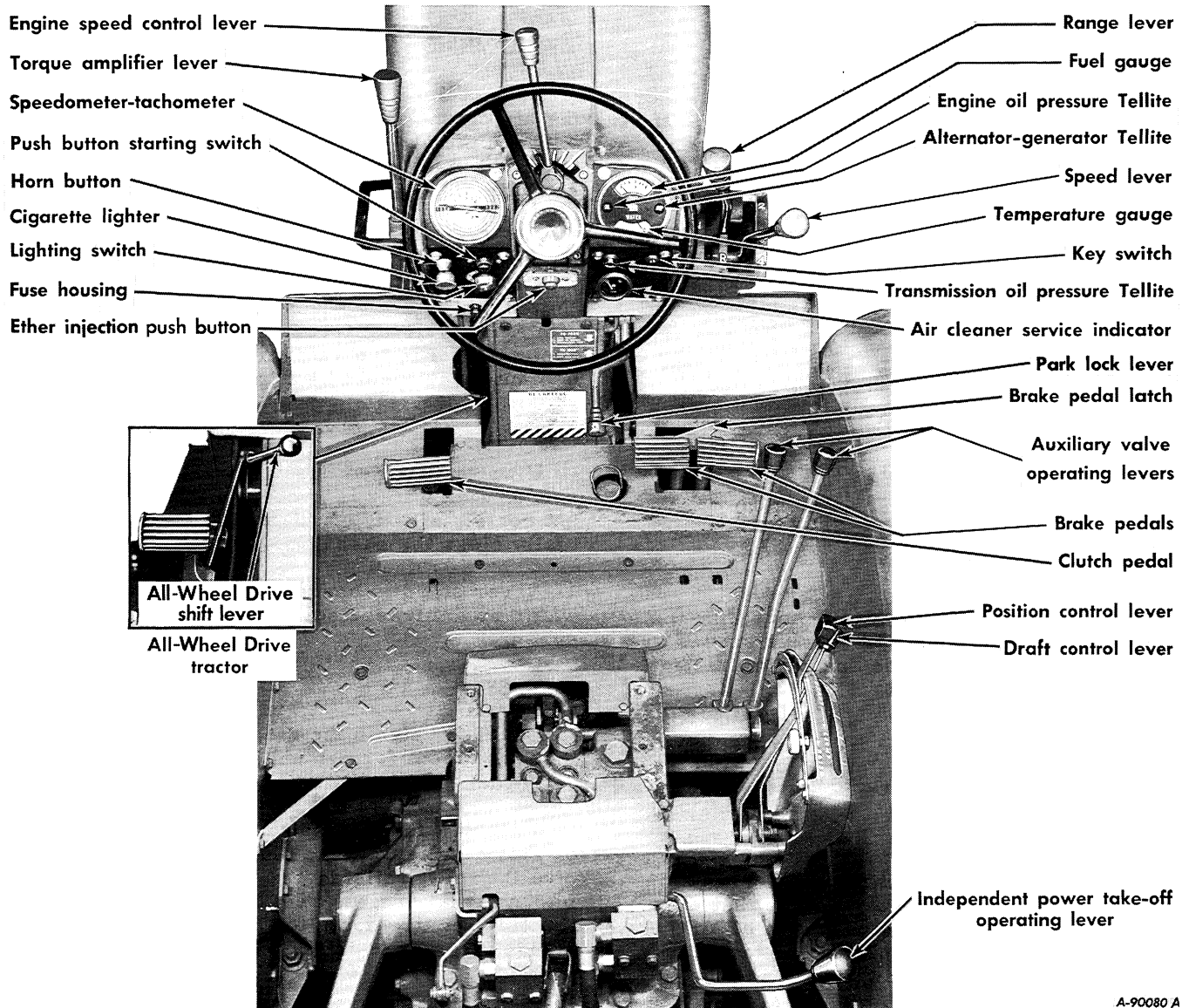
LEFT and RIGHT indicate the left and right sides of the tractor when facing forward in the driver's seat. See Illust. 2A.

The illustrations in this manual are numbered to correspond with the pages on which they appear; for example, Illusts. 2 and 2A are on page 2.

A variety of extra equipment and accessories is available. Refer to page 103. Operating and maintenance instruction on these items is included in the instructions for operating or Maintaining the tractor.

INSTRUMENTS AND CONTROLS

Before attempting to start or operate the tractor, be sure to review all the instructions for the new tractor and thoroughly familiarize yourself with the instruments and controls.



Illust. 3
Location of instruments and controls.

A-90080 A

Air cleaner service indicator (page 43)
 Alternator-generator Tellite (pages 3, 54 and 55)
 All-Wheel Drive shift lever (pages 7 and 8)
 Brake pedals (pages 9 and 74)
 Clutch pedals (pages 12, 76 and 77)
 Engine speed control lever (pages 12 and 58)
 Ether starting push-button (page 12)
 Fuel gauge (page 5)
 Hydraulic system control levers (pages 20 to 23)
 Independent power take-off operating lever (page 39)

Key switch (pages 12 and 47)
 Lighting switch (pages 48 and 50)
 Oil pressure Tellite (pages 10 and 54)
 Park lock lever (pages 3 and 75)
 Push button starting switch (pages 12 and 47)
 Safety starting switch (page 7)
 Speedometer-tachometer (page 7)
 Torque amplifier operating lever (pages 3 and 9)
 Transmission range and speed levers (pages 7 and 12)
 Temperature gauge (page 40)

Buy Now



Our support email:

ebooklibonline@outlook.com