

1026
Turbo Diesel Tractor
Operators Manual

1082915R1

Reprinted

CASE III



*This symbol means **ATTENTION! BECOME ALERT! YOUR SAFETY IS INVOLVED.** The message that follows the symbol contains important information about your safety. Carefully read the message. Make sure you fully understand the causes of possible injury or death.*

SB001

IF THIS MACHINE IS USED BY AN EMPLOYEE, IS LOANED, OR IS RENTED, MAKE SURE THAT THE OPERATOR UNDERSTANDS THE TWO INSTRUCTIONS BELOW.

BEFORE THE OPERATOR STARTS THE ENGINE:

1. GIVE INSTRUCTIONS TO THE OPERATOR ON SAFE AND CORRECT USE OF THE MACHINE.
2. MAKE SURE THE OPERATOR READS AND UNDERSTANDS THE OPERATOR'S MANUAL FOR THIS MACHINE.

WARNING

IMPROPER OPERATION OF THIS MACHINE CAN CAUSE INJURY OR DEATH.

BEFORE STARTING THE ENGINE, DO THE FOLLOWING:

1. READ THE OPERATOR'S MANUAL.
2. READ ALL SAFETY DECALS ON THE MACHINE.
3. CLEAR THE AREA OF OTHER PERSONS.

LEARN AND PRACTICE SAFE USE OF MACHINE CONTROLS IN A SAFE, CLEAR AREA BEFORE YOU OPERATE THIS MACHINE ON A JOB SITE.

It is your responsibility to observe pertinent laws and regulations and to follow manufacturer's instructions on machine operation and maintenance.

See your Authorized Case dealer for additional operator's manuals, parts catalogs, and service manuals.

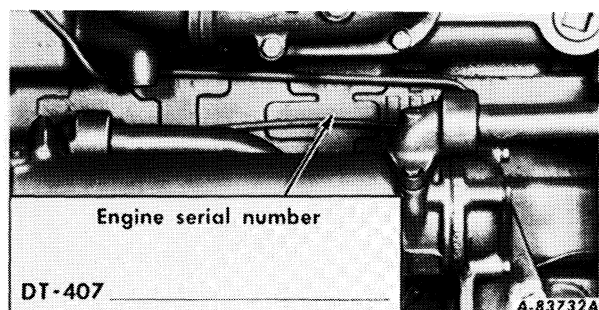
To The Owner

Assembled in this manual are operation, lubrication, and maintenance instructions for the Farmall and International 1026 Turbo Diesel Hydrostatic Drive Tractor, including the Hi-Clear and All-Wheel Drive model. This material has been prepared in detail in the hope that it will help you to better understand the correct care and efficient operation of your tractor.

Your new International Harvester tractor is designed to meet today's exacting operating requirements. The ease and comfort of operation, the ability to match ground speeds to engine power and work requirement, and the effortless versatility of the hydraulic system are intended to lighten your work and shorten your hours on the job.

The hydrostatic drive will require minimum service if recommended operating and maintenance procedures are followed. Should you have difficulties with the unit consult your International Harvester dealer.

UNDER NO CIRCUMSTANCES SHOULD YOU ATTEMPT TO SERVICE THESE UNITS YOURSELF. Only your dealer is authorized to repair or replace units on the hydrostatic drive under the terms of the warranty.



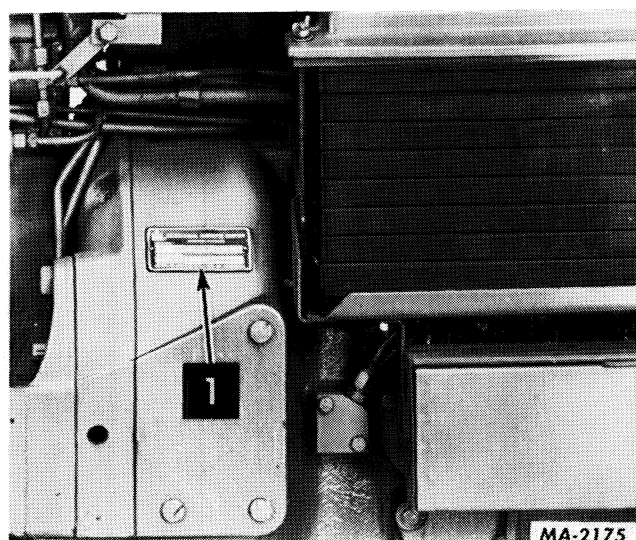
Your local International Harvester dealer is interested in the performance you receive from this tractor. He has factory-trained servicemen, informed in the latest method of servicing tractors, and modern tools, and original-equipment IH service parts which assure proper fit and good performance.

To obtain top performance and assure economical operation the tractor should be inspected, depending on its use, periodically, or at least once a year, by your International Harvester Dealer.

Before you operate the tractor study this manual carefully. It has been prepared to help you operate and maintain your tractor with utmost efficiency. New copies may be ordered from your dealer at a nominal price.

When in need of parts, always specify the tractor and engine serial numbers, including prefix and suffix letters. Write these serial numbers in the spaces provided below.

Note: When transporting a unit equipped with a turbocharger on a high speed carrier, seal the intake and exhaust pipe openings to prevent turbocharger damage.



1 - Tractor serial number _____

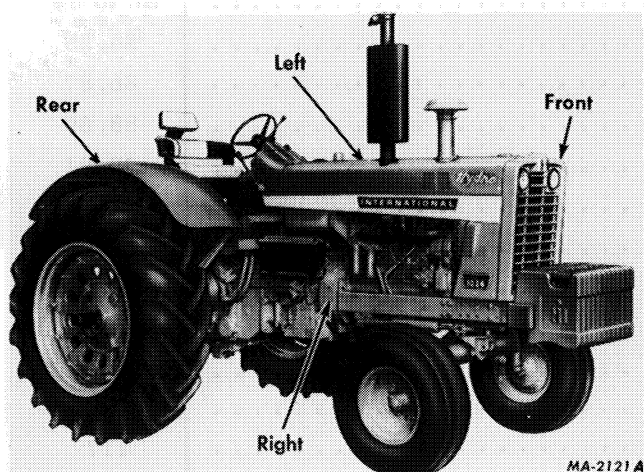
CONTENTS

Description	Page No.
CONTENTS	1
INTRODUCTION	2
INSTRUMENTS AND CONTROLS	3, 4
BEFORE OPERATING YOUR NEW TRACTOR	5
DRIVING THE TRACTOR	3 to 11
ENGINE AND FUEL SYSTEM	12 to 17
BASIC HYDRAULIC SYSTEM WITH POWER STEERING	18 to 20
HYDRAULIC CONTROLS FOR HITCHES	20 to 23
THREE-POINT HITCH	23 to 30
QUICK COUPLER	29, 30
WEIGHT TRANSFER HITCH (THREE-POINT HITCH)	31, 32
TWO-POINT FAST HITCH	33 to 36
AUXILIARY VALVES AND REMOTE CYLINDERS	36 to 39
HITCHING TRAILING EQUIPMENT TO THE TRACTOR	40 to 43
POWER TAKE-OFF	43, 44
COOLING SYSTEM	45 to 48
AIR CLEANING SYSTEM	48 to 52
ELECTRICAL SYSTEM	53 to 63
MINOR ENGINE OPERATIONS	63 to 65
FRONT WHEELS	66 to 70
ALL-WHEEL DRIVE	70
REAR WHEELS	71 to 79
WEIGHTS	80, 81
PNEUMATIC TIRES	82 to 84
BRAKES	84, 85
HYDROSTATIC CONTROLS	86, 87
STORING THE TRACTOR	88, 89
COLD WEATHER PRECAUTIONS	90, 91
TROUBLE SHOOTING	91 to 96
LUBRICATION	97 to 102
LUBRICATION TABLE	103
LUBRICATION GUIDE	104 to 110
PREVENTIVE MAINTENANCE GUIDE	111, 112
SPECIFICATIONS	113 to 116
OPTIONAL EQUIPMENT	117
INDEX	118 to 121

INTRODUCTION



Illust. 2
Farmall Turbo Diesel Hydrostatic Tractor.



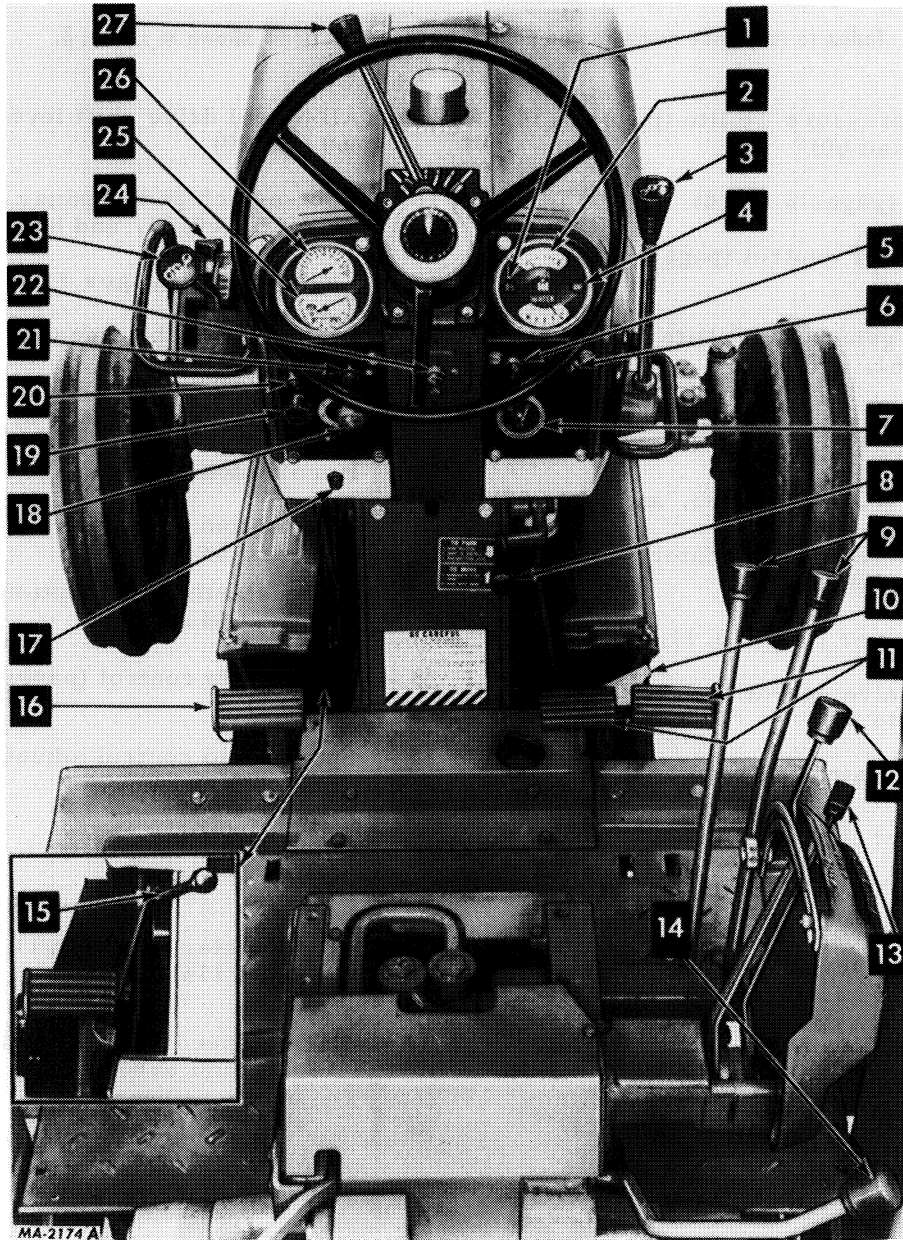
Illust. 2A
Terms of location.

LEFT and RIGHT indicate the left and right sides of the tractor when facing forward in the driver's seat. See Illust. 2A.

The illustrations in this manual are numbered to correspond with the pages on which they appear; for example, Illusts. 2 and 2A are on page 2.

A variety of optional equipment is available. Refer to page 117. Operating and maintenance instruction on these items is included in the instructions for operating or maintaining the tractor.

INSTRUMENTS AND CONTROLS



Illust. 3
Location of instruments and controls.

(Hydrostatic drive with forward and reverse speed ratio control and foot-n-inch pedal).

Reference numbers for items illustrated above are listed on page 4.

INSTRUMENTS AND CONTROLS

Index to reference numbers and page references for items shown in Illust. 3.

- | | |
|--|---|
| 1 - Engine oil pressure Tellite (pages 3, 14, 54 to 57, and 60) | 15 - All-wheel drive shift lever (pages 3, 9, 69 and 70) |
| 2 - Fuel gauge (pages 3 and 6) | 16 - Foot-n-inch pedal (pages 3, 9, 15, 19, 20, 54 to 57, 60, 61, and 86) |
| 3 - Range selector control (pages 3, 8, 9, and 15) | 17 - Fuse housing (pages 3 and 62) |
| 4 - Alternator-generator Tellite (pages 3, 54 to 57, 61, and 62) | 18 - Lighting switch (pages 3, 54 to 57, and 59) |
| 5 - Transmission warning Tellite (pages 3, 15, 19, 54 to 57, 60, and 61) | 19 - Cigarette lighter (page 3) |
| 6 - Key switch (pages 3, 15, 53, and 54 to 57) | 20 - Horn button (pages 3, and 54 to 57) |
| 7 - Air cleaner service indicator (pages 3, 48, 49, and 54 to 57) | 21 - Push button starting switch (pages 3, 14, 15, and 53 to 57) |
| 8 - Park lock lever (pages 3, 11, and 85) | 22 - Ether starting push button (pages 3, 15, 16, and 54 to 57) |
| 9 - Auxiliary valve operating levers (pages 3, and 36 to 39) | 23 - Speed ratio control (pages 3, 8, 9, 15, and 87) |
| 10 - Brake pedal latch (pages 3 and 11) | 24 - Speed ratio control adjustable stop (pages 3 and 8) |
| 11 - Brake pedals (pages 3, 11, and 84) | 25 - Tachometer (pages 3, 11, 54 to 57, 113, and 114) |
| 12 - Inside control lever (pages 3, and 20 to 23) | 26 - Speedometer (pages 3, 11, 54 to 57, 113 and 114) |
| 13 - Draft control lever (pages 3, and 20 to 23) | 27 - Engine speed control lever (pages 3, 14, 15, 16, and 65) |
| 14 - Independent power take-off operating lever (pages 3, 43, 44, and 114) | |

BEFORE OPERATING YOUR NEW TRACTOR

TRACTOR BREAK-IN PROCEDURE

Never operate an engine immediately under full load.

Break it in carefully by operating the tractor at 3/4 rated engine r. p. m. in low range, with a medium engine load, for the first 25 hours.

Any attempt to increase the engine horsepower by increasing engine r.p.m. above its rated maximum, or by other means, not only affects traveling speeds but affects the life of matching parts and voids the company responsibility as outlined in the warranty.

Never operate the engine at more than the regular governed speed. Excessive speeds are harmful. Refer to "Engine Speeds" in the "Specifications" on page 114.

LUBRICATION

Lubricate the entire tractor, using the "Lubrication Guide" and the "Lubrication Table" for reference. Check the oil levels. See pages 103 to 110.

PNEUMATIC TIRES

Before moving the tractor, check the air pressure in the pneumatic tires and inflate or deflate the pressures recommended in the tables on pages 82 and 83.

AIR CLEANING SYSTEM

Inspect the flexible rubber hose connections, the air cleaner and turbocharger. All joints between the air cleaner and turbocharger manifold must be kept tight to prevent dirt from entering the engine.

ENGINE COOLING SYSTEM

Tractors shipped to destinations in the United States and Canada have the cooling system filled with antifreeze solution. Check the coolant level in the radiator. When cold, the coolant level should be 2 inches above the radiator core.

If water is added, use only clean water; soft or rain water is recommended, as it does not contain alkali, which forms scale and eventually clogs the passages.

Never start or operate the engine without water or antifreeze solution in the cooling system.

FUEL SYSTEM

Carefully strain the diesel fuel to be sure it is free from foreign substances. Do not use dirty fuel.

Consult your International Harvester dealer or fuel supplier for the diesel fuels, which will give the most satisfactory performance in your International engine. See the table showing the limiting requirements for diesel fuels recommended for use in International diesel engines on page 12.

PRIMING THE TURBOCHARGER

Before starting a new engine or when the engine has been idle for a month or more, the turbocharger must be primed. To prime the turbocharger, see page 14.

Buy Now



Our support email:

ebooklibonline@outlook.com