

International 574 Tractor Operator's Manual

1084039R1

Reprinted

CASE



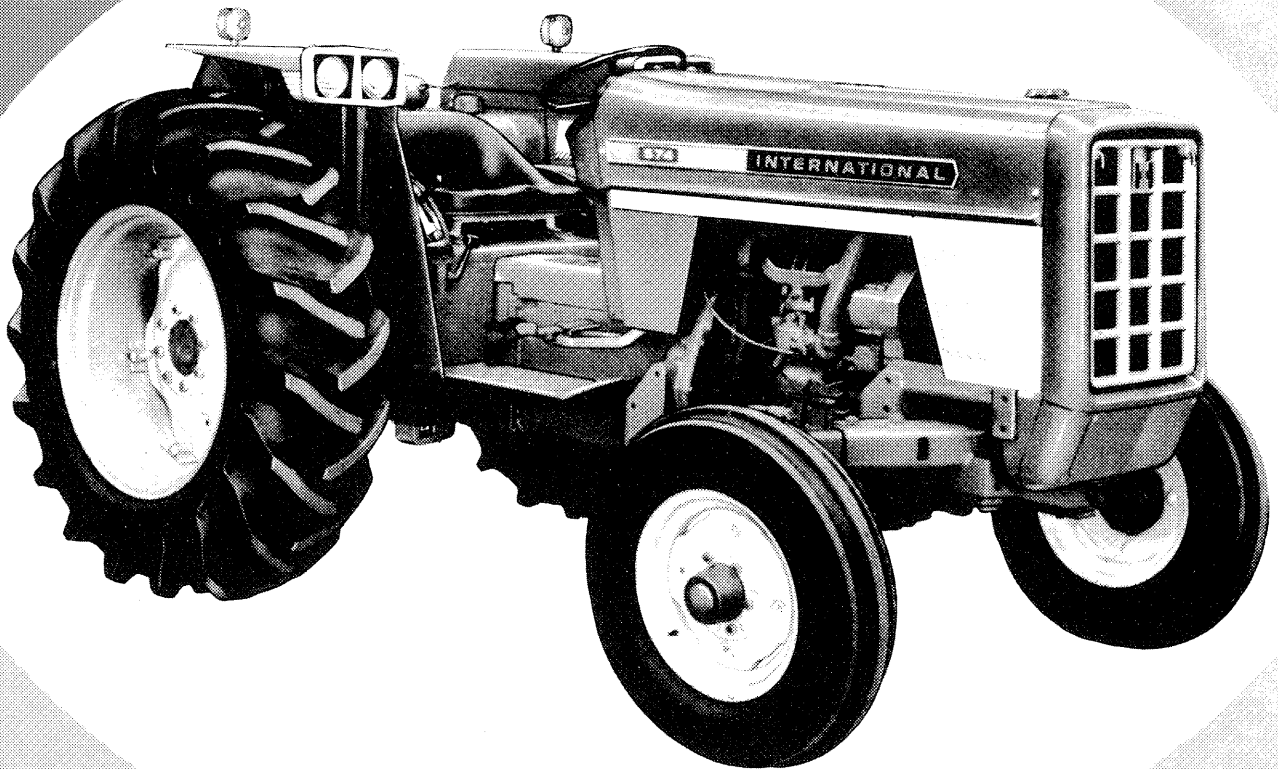
OPERATOR'S MANUAL

INTERNATIONAL[®]

574

Tractor

**OPERATION
MAINTENANCE
LUBRICATION**



To The Owner

Your new International Harvester tractor is designed to meet today's exacting operating requirements. The ease and comfort of operation, the ability to match ground speeds to engine power and work requirement, and the effortless versatility of the hydraulic system are intended to lighten your work and shorten your hours on the job.

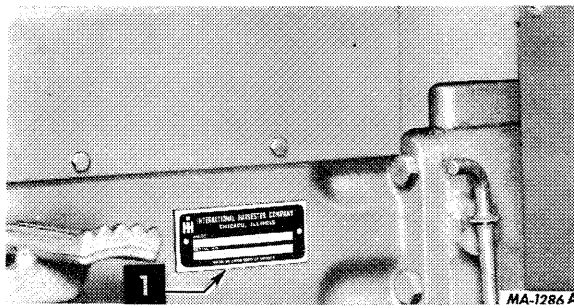
Your tractor has a synchromesh transmission.

The synchromesh transmission will require minimum service if recommended operating and maintenance procedures are followed. Should you have difficulties with the unit consult your International Harvester dealer.

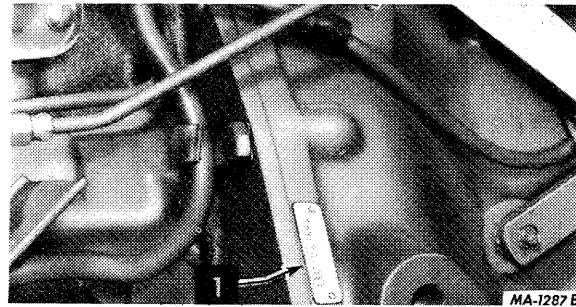
These are a few facts that you should know about your tractor.

1. To tow the tractor, place the Range lever in neutral. Refer to Towing the Tractor on page 9.

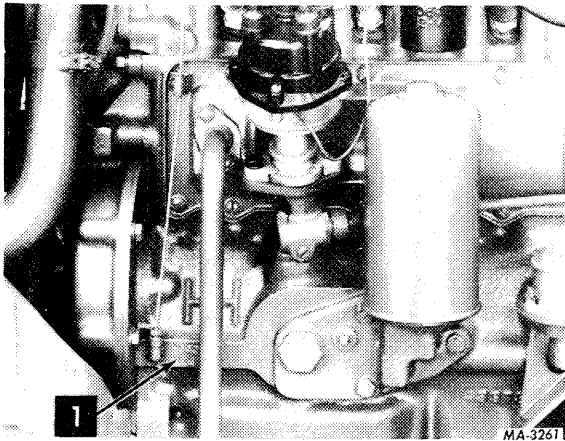
2. Change the filters at the specified interval. The 10 hour and 100 hour changes are extremely important and must not be overlooked.



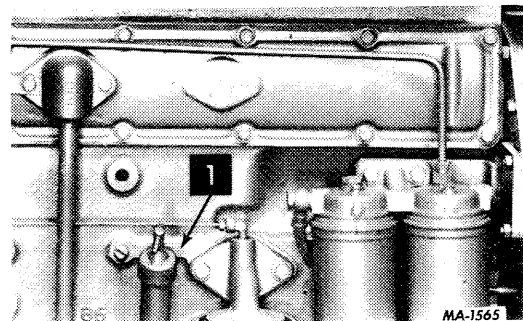
1 - Tractor serial number



1 - Skidded unit serial number



1 - Gasoline engine serial number
C-200 _____



1 - Diesel engine serial number
D-239 _____

TECHNICAL PUBLICATIONS AVAILABLE

Your International Harvester Dealer and his factory trained servicemen are best qualified to service your equipment. Up-to-date instructions and adequate special tools are also a part of your Dealer's service facilities.

This Operator's Manual was prepared to instruct you in proper operation and maintenance of your equipment. If you desire additional information you may purchase Service Manuals and/or Parts Catalogs. Additional copies of the Operator's Manual are also available.

Fill out the order blank and forward together with your check or money order in the appropriate amount (U.S. Funds) to:

International Harvester Company

PRINTING AND
DISTRIBUTION SERVICES

807 Blackhawk Drive
Westmont, Illinois 60559

Attention: Cashier

----- Cut Along This Line -----

Title	Number	Qty.	Price Each
Operator's Manual			
International 574 Tractor Serial No. 100,000 and below ...	1 084 039 R1		8.40
Parts Catalogs			
International 574 Tractor	TC-138		12.10
4 Cyl. Gasoline or LP Gas	ENG-1		17.30
4 Cyl. Diesel Engine	ENG-4		7.10
Service Manual			
Chassis	GSS-1416-1		25.50
Engine and Fuel System — Diesel, D-239	GSS-1377-H		15.40
Engine and Fuel System — Gasoline, C-200	GSS-1395-J		5.60

Cut Along This Line

Please Print

Name _____

Street Address _____

City _____

State _____

Zip Code _____

Date _____

Signed _____

Do not send cash or stamps

Prices subject to change without notice.

To The Owner

Your local International Harvester dealer is interested in the performance you receive from this tractor. He has factory-trained service men, informed in the latest method of servicing tractors, and modern tools, and original equipment IH service parts which assure proper fit and good performance.

To obtain top performance and assure economical operation the tractor should be inspected, depending on its use, periodically, or at least once a year, by your International Harvester dealer.

Before you operate the tractor study this manual carefully. It has been prepared to help you operate and maintain your tractor with utmost efficiency. New copies may be ordered from your dealer at a nominal price.

When in need of parts, always specify the tractor and engine serial numbers, including prefix and suffix letters. Write these serial numbers in the spaces provided.

CONTENTS

Description	Page No.
CONTENTS	1
INTRODUCTION	2
SAFETY SUGGESTIONS	3
INSTRUMENTS AND CONTROLS	4
BEFORE OPERATING YOUR NEW TRACTOR	5, 6
DRIVING THE TRACTOR	6 to 12
GASOLINE ENGINE AND FUEL SYSTEM	13 to 16
DIESEL ENGINE AND FUEL SYSTEM	17 to 24
BASIC HYDRAULIC SYSTEM WITH POWER STEERING	25
HYDRAULIC CONTROLS FOR THREE-POINT HITCH	26 to 28
THREE-POINT HITCH	31 to 36
AUXILIARY VALVES AND REMOTE CYLINDERS	37 to 39
HITCHING TRAILING EQUIPMENT TO THE TRACTOR	40 to 42
POWER TAKE-OFF	41 to 42
COOLING SYSTEM	43 to 45
AIR CLEANING SYSTEM	46 to 48
ELECTRICAL SYSTEM	49 to 54
MINOR ENGINE SERVICE OPERATIONS	55 to 59
FRONT WHEELS	60, 61
REAR WHEELS	61 to 66
WEIGHTS	66 to 68
PNEUMATIC TIRES	69, 70
BRAKES	71, 72
CLUTCHES (Synchromesh transmission)	73
STORING THE TRACTOR	74, 75
COLD WEATHER PRECAUTIONS	75, 76
TROUBLE SHOOTING	77 to 84
LUBRICATION	86 to 89
LUBRICATION TABLE	90
LUBRICATION GUIDE	91 to 94
PREVENTIVE MAINTENANCE GUIDE	95 to 98
SPECIFICATIONS	99 to 102
OPTIONAL EQUIPMENT	103
INDEX	104 to 108

Buy Now



Our support email:

ebooklibonline@outlook.com