

**766  
Tractor**

**Operators Manual**

**1084204R1**

Reprinted

***CASE III***



***This symbol means ATTENTION! BECOME ALERT! YOUR SAFETY IS INVOLVED. The message that follows the symbol contains important information about your safety. Carefully read the message. Make sure you fully understand the causes of possible injury or death.***

SB001

IF THIS MACHINE IS USED BY AN EMPLOYEE, IS LOANED, OR IS RENTED, MAKE SURE THAT THE OPERATOR UNDERSTANDS THE TWO INSTRUCTIONS BELOW.

BEFORE THE OPERATOR STARTS THE ENGINE:

1. GIVE INSTRUCTIONS TO THE OPERATOR ON SAFE AND CORRECT USE OF THE MACHINE.
2. MAKE SURE THE OPERATOR READS AND UNDERSTANDS THE OPERATOR'S MANUAL FOR THIS MACHINE.



IMPROPER OPERATION OF THIS MACHINE CAN CAUSE INJURY OR DEATH.

BEFORE STARTING THE ENGINE, DO THE FOLLOWING:

1. READ THE OPERATOR'S MANUAL.
2. READ ALL SAFETY DECALS ON THE MACHINE.
3. CLEAR THE AREA OF OTHER PERSONS.

LEARN AND PRACTICE SAFE USE OF MACHINE CONTROLS IN A SAFE, CLEAR AREA BEFORE YOU OPERATE THIS MACHINE ON A JOB SITE.

It is your responsibility to observe pertinent laws and regulations and to follow manufacturer's instructions on machine operation and maintenance.

See your Authorized Case dealer for additional operator's manuals, parts catalogs, and service manuals.

# To The Owner

Assembled in this manual are operation, lubrication, and maintenance instructions for the Farmall® 766 Tractor. This material has been prepared in detail in the hope that it will help you to better understand the correct care and efficient operation of your tractor.

Your new International Harvester tractor is designed to meet today's exacting operating requirements. The ease and comfort of operation, the ability to match ground speeds to engine power and work requirement, and the effortless versatility of the hydraulic system are intended to lighten your work and shorten your hours on the job.

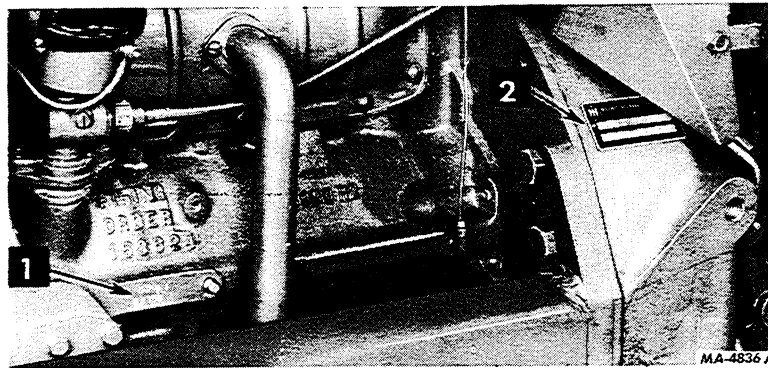
Your local International Harvester dealer is interested in the performance you receive from this tractor. He has factory-trained

servicemen, informed in the latest method of servicing tractors, and modern tools, and original-equipment IH service parts which assure proper fit and good performance.

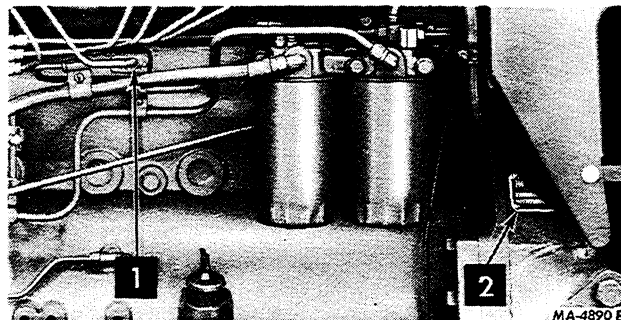
To obtain top performance and assure economical operation the tractor should be inspected, depending on its use, periodically, or at least once a year, by your International Harvester Dealer.

Before you operate the tractor, study this manual carefully. It has been prepared to help you operate and maintain your tractor with utmost efficiency. New copies may be ordered from your dealer at a nominal price.

When in need of parts, always specify the tractor and engine serial numbers, including prefix and suffix letters. Write these serial numbers in the spaces provided below.



1 - Gasoline engine serial number	2 - Tractor serial number
-----------------------------------	---------------------------



1 - Diesel Engine serial number	2 - Tractor serial number
---------------------------------	---------------------------

This manual covers tractors with serial number 9000 and higher.

**FREE GASOLINE CAP — See your dealer today.**

International Harvester has developed a new gasoline cap designed to improve vapor venting and to inhibit the sudden eruption of liquid fuel if the safety precautions against cap removal are not observed.

New caps will be exchanged **free of charge** with owners of certain models of International Harvester farm tractors. To see whether your tractor already has the new cap or to arrange to obtain one, simply contact your local International Harvester dealer. Also ask him for a free International Harvester brochure "New Facts About Fuels" and for free "Warning" decals for all gasoline equipment.

<b>Gasoline Tractor Models Included in Cap Exchange Program (See Note)</b>			
A	100	*504	2404
AV	130	F-544 Only	2424
B	140	560	2444
BN	200	600	2504
C	230	*606	2544
H	240	650	*2606
HV	300	F-656 Only	2706
M	330	660	2756
MV	340	666	2806
O	350	686	2826
OS	400	706	2856
W	404	756	
WR	424	766	
70	444	806	
86	450	826	
	460	856	

**NOTE:** New cap **will not** fit on any of these tractors.

B-275	I-434
B-276	I-544
I-284	I-656
I-354	I-2656
B-414	

\* New cap **will not** fit on these tractors above serial numbers shown.

F-504 above serial No. 13400
I-504 above serial No. 14272
I-606 above serial No. 6879
I-2606 above serial No. 6879

New cap **will not** fit on any lawn and garden tractor in the Cadet model series or on any tractor with the gasoline tank behind the operator's seat.

**IMPORTANT FUEL SYSTEM SAFETY WARNING  
AND  
ANNOUNCEMENT OF FREE, REPLACEMENT GASOLINE CAP**



**CAUTION!** The following information pertains to personal safety. Be sure to read and follow these instructions.

**PROBLEM — Gasoline vapors can build up pressure in your gasoline tank.**

All gasoline fuels are more volatile today than ever before. They vaporize and build up pressure in your gasoline tank more easily than in the past. Winter grade gasoline is especially subject to vaporization and pressure build-up when used on hot Spring or Fall days. If you have a tractor which is out of tune or not properly maintained, it can run hotter and increase vaporization.

**DANGER — Fire and personal injury.**

If the fuel cap is removed when the gasoline tank is hot and vapor pressure has, under certain circumstances, built up in the tank, this sudden release of pressure could force gasoline out of the tank. If the gas cap is not fully secured and tightened, it could come off the tank, and again, gasoline could escape. This sudden eruption of gasoline exposes the operator to, and may cover him with, liquid fuel and vapors and is a clear fire hazard if a source of ignition is present. A running engine is a source of ignition, as are cigarettes, open flames, sparks or a poorly maintained exhaust system. **An immediate fire could occur.** The operator or anyone in the area could be burned and suffer serious injury or even death.

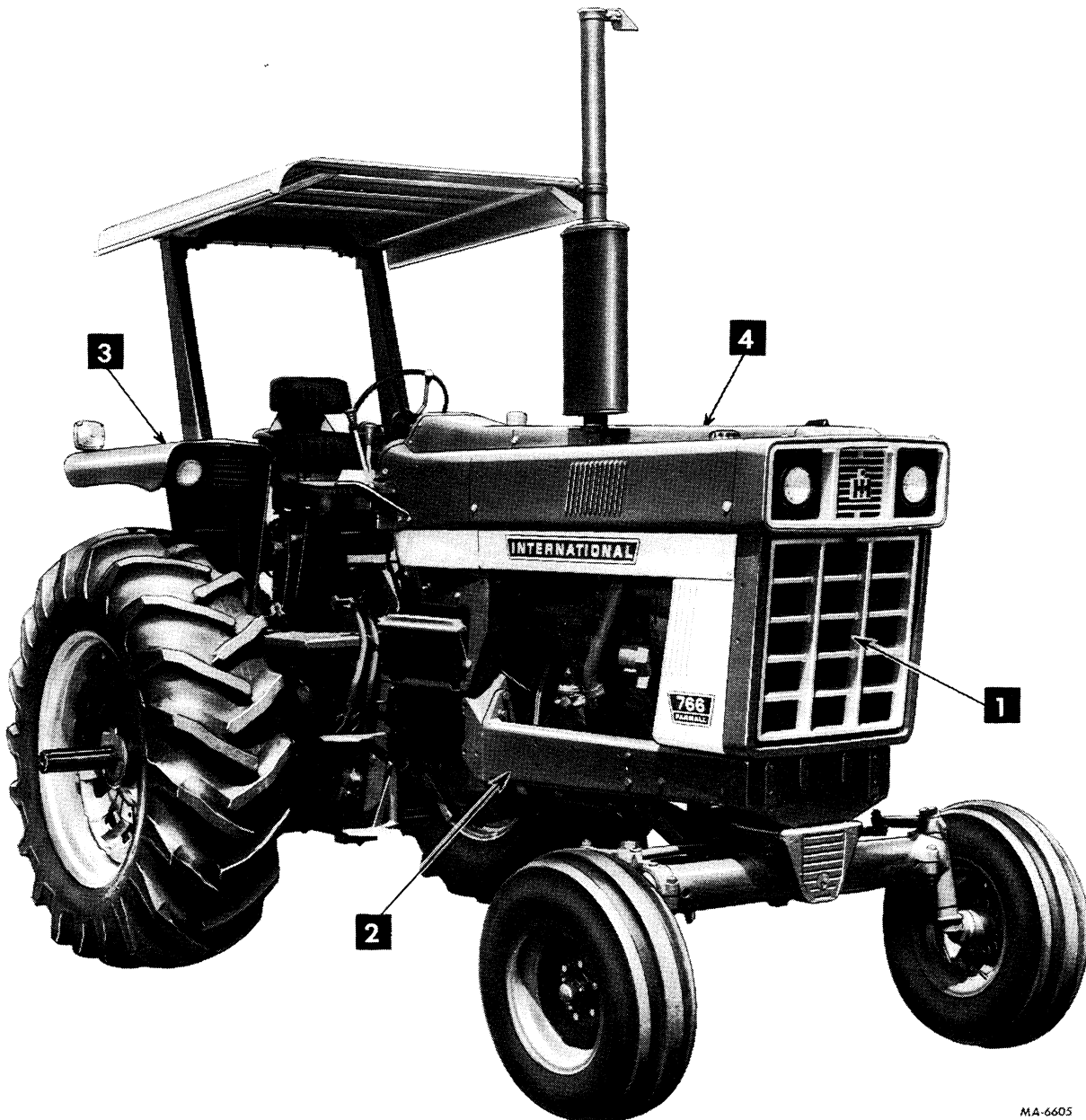
**PRECAUTIONS — Observe the following steps for safe operation:**

- Always tighten gas caps securely.
- Never, under any circumstances, take the gas cap off a hot or running tractor.
- Never hold over Winter gasoline for use in the Spring. Remove any equipment unnecessary for warm weather operations, such as comfort covers, heat housers, or radiator covers.
- Maintain equipment properly and pay particular attention to electrical, exhaust, fuel, and cooling systems. Repair or replace frayed electrical wires; leaky exhaust manifolds, gaskets, pipes and mufflers; damaged carburetors, sediment bowls and fuel lines. Be sure radiators are clean inside and out. Clean off any accumulation of trash, oil or grease.
- Make sure that fuel cap vent holes are not plugged, gaskets are in good condition, and that cap tangs are firmly riveted. Repair worn, bent, or deformed filler necks and damaged heat shields or shield insulation. If your tractor is not equipped with a heat shield or insulation, install such equipment on applicable models.
- Be alert to any unusual sights and sounds during operation. If you suspect overheating or pressure build-up in the fuel system, do not touch the cap. Turn off the engine and allow the tractor to cool before you touch the cap.

# CONTENTS

Description	Page No.
Contents . . . . .	1
Introduction . . . . .	2
Work Safely - Follow These Rules . . . . .	3, 4
Tractor Instruments and Controls . . . . .	5 to 7
Cab Controls . . . . .	8, 9
Cab Equipment Preventive Maintenance . . . . .	10 to 13
Before Operating Your New Tractor . . . . .	14
Driving the Tractor . . . . .	15 to 19
Gasoline Engine and Fuel System . . . . .	20 to 22
Diesel Engine and Fuel System . . . . .	23 to 28
Hydraulic Controls for Three-Point or Two-Point Hitch . . . . .	29 to 32
Three-Point Hitch . . . . .	33 to 41
Weight Transfer Hitch . . . . .	41 to 43
Two-Point Hitch . . . . .	44 to 46
Hitching Trailing Equipment to the Tractor . . . . .	47 to 49
Auxiliary Valves, Remote Cylinders, and Hydraulic Outlets . . . . .	50 to 54
Power Take-Off . . . . .	54, 55
Cooling System . . . . .	56 to 58
Air Cleaning System . . . . .	59, 60
Electrical System . . . . .	61 to 66
Front Wheels . . . . .	67 to 69
Rear Wheels . . . . .	69 to 77
Weights . . . . .	78 to 80
Pneumatic Tires . . . . .	80, 81
Storing the Tractor . . . . .	82, 83
Cold Weather Precautions . . . . .	83
Lubrication . . . . .	84 to 88
Lubrication Table . . . . .	89
Lubrication Guide . . . . .	90 to 95
Preventive Maintenance Guide . . . . .	96 to 98
Specifications . . . . .	99 to 103
Optional Equipment . . . . .	103
Universal Symbols For Tractor Instruments And Controls . . . . .	104, 105
Index . . . . .	106 to 108

# INTRODUCTION



MA-6605

1 - Front 2 - Right 3 - Rear 4 - Left

Illust. 2

Right side of tractor showing terms of location.

LEFT and RIGHT indicate the left and right sides of the tractor when facing forward in the driver's seat.

The illustrations in this manual are numbered to correspond with the pages on which they appear; for example, Illusts. 18 and 18A are on page 18.

A variety of optional equipment is available. Refer to "Optional Equipment". Operating and maintenance instruction on these items is included in the instructions for operating or maintaining the tractor. Disregard instructions for equipment not on your tractor.

# WORK SAFELY—FOLLOW THESE RULES



The symbol is used to call your attention to instructions concerning your personal safety. Be sure to observe and follow these instructions.

**A CAREFUL OPERATOR IS THE BEST INSURANCE AGAINST AN ACCIDENT**

## BEFORE STARTING

Know the controls and what they do.

When fueling an engine, keep any type of open flame away. Do Not Smoke! Wait for the the engine to cool before refueling it.

Check brakes and clutch for correct adjustments.

Reduce tipping hazards by spreading wheels as far as your work program permits.

Check coolant and engine oil levels, and perform any other necessary services, before starting the engine.

Clean dirt, trash, and grease from operator's platform, pedals, steps, and steering wheel.

Be sure muffler and exhaust pipe extensions are in place so exhaust gases are discharged above operator.

Always carry a "Charged" fire extinguisher and a first aid kit.

Avoid loose-fitting clothing, which could catch on moving parts.

Mounting assist handles and steps are provided for your safety. Use them when getting on or off the tractor.

Put all controls in neutral before starting the engine.

Be sure power take-off lever is in the "OFF" or disengaged position before starting the engine.

Before starting engine make sure helpers or observers stand clear of equipment.

Operate the engine only in well ventilated areas.

Release park brake completely.

## DURING OPERATION

Power take-off master shield must always be in place on the tractor.

Use the drawbar in lowest position when hitching to a heavy load, such as manure spreaders, loaded two-wheel trailers, and heavy wagons.

Pull only from drawbar; never hitch to axle housing.

Shift transmission to neutral and set park brake before dismounting to hitch equipment.

Keep safety shields in place when using power take-off.

Disengage PTO and turn "OFF" engine before adjusting or unclogging power driven machinery.

When the belt pulley is operating, wait for the belt to STOP completely before making any adjustments or removing the belt.

Only the operator should ride on the tractor. He should sit on seat or stand on the platform.

Keep others, especially children, from riding on steps, fenders, or drawbar, and away from tractor and equipment.

Continued on next page



**Buy Now**



Our support email:

[ebooklibonline@outlook.com](mailto:ebooklibonline@outlook.com)