

**766, 966, 1066 and 1466
Tractors**

Operators Manual

1084329R2

Reprinted

CASE IH



*This symbol means **ATTENTION! BECOME ALERT! YOUR SAFETY IS INVOLVED.** The message that follows the symbol contains important information about your safety. Carefully read the message. Make sure you fully understand the causes of possible injury or death.*

SB001

IF THIS MACHINE IS USED BY AN EMPLOYEE, IS LOANED, OR IS RENTED, MAKE SURE THAT THE OPERATOR UNDERSTANDS THE TWO INSTRUCTIONS BELOW.

BEFORE THE OPERATOR STARTS THE ENGINE:

1. GIVE INSTRUCTIONS TO THE OPERATOR ON SAFE AND CORRECT USE OF THE MACHINE.
2. MAKE SURE THE OPERATOR READS AND UNDERSTANDS THE OPERATOR'S MANUAL FOR THIS MACHINE.



IMPROPER OPERATION OF THIS MACHINE CAN CAUSE INJURY OR DEATH.

BEFORE STARTING THE ENGINE, DO THE FOLLOWING:

1. READ THE OPERATOR'S MANUAL.
2. READ ALL SAFETY DECALS ON THE MACHINE.
3. CLEAR THE AREA OF OTHER PERSONS.

LEARN AND PRACTICE SAFE USE OF MACHINE CONTROLS IN A SAFE, CLEAR AREA BEFORE YOU OPERATE THIS MACHINE ON A JOB SITE.

It is your responsibility to observe pertinent laws and regulations and to follow manufacturer's instructions on machine operation and maintenance.

See your Authorized Case dealer for additional operator's manuals, parts catalogs, and service manuals.

CONTENTS

SERIAL NUMBERS	4, 5	All-Wheel Drive	
INTRODUCTION	6, 7	Stopping the Tractor	
WORK SAFELY – FOLLOW THESE RULES	8, 9, 10	Park Lock Lever	
Before Starting		Towing the Tractor	
During Operation		Speedometer – Tachometer	
Tractors with Cabs			
Transporting			
After Operating			
INSTRUMENTS AND CONTROLS	11 to 14	DIESEL ENGINE AND FUEL SYSTEM	21 to 27
Tractor Instruments and Controls		Fuel System	
Cab Controls		Warranty Notice	
Operating the Cab Controls		Venting the Fuel System	
BEFORE OPERATING YOUR NEW TRACTOR	14	Fuel Storage	
Tractor Break-In Procedure		Priming the Turbocharger	
Lubrication		Starting the Engine	
Tires		After the Engine is Running	
Governor		Engine Oil Pressure Gauge	
Air Cleaning System		Stopping the Engine	
Engine Cooling System		Changing the Ether Fluid Container	
Fuel System		Draining Water from the Tractor Fuel Tank	
Priming the Turbocharger		Fuel Filters	
DRIVING THE TRACTOR	15 to 20	Fuel Injection Pump and Nozzles	
Preparing the Tractor for Each Day's Work		Injection Pump Governor	
Fuel Gauge		Engine Coolant Heater	
Filling the Fuel Tank		GASOLINE ENGINE AND FUEL SYSTEM	28, 29, 30
Adjusting the Seat		Starting the Engine	
Adjusting the Hydraulic Seat		After the Engine is Running	
Steering the Tractor		Engine Oil Pressure Gauge	
Tilt Steering Wheel		Stopping the Engine	
Locking the Brakes		Cleaning the Fuel Strainer and Sediment Bowl	
Accelerator Pedal		Carburetor	
Differential Lock		Fuel Shut-Off Solenoid Valve	
Starting Switch		HYDRAULIC CONTROLS FOR THREE-POINT HITCH	31 to 34
Transmission Range and Speed Levers		Position Control (Inside Lever)	
Starting the Tractor		Draft Control (Outside Lever)	
Torque Amplifier		Run Range (Inside Lever)	
Hydraulic Powered Clutch Control			

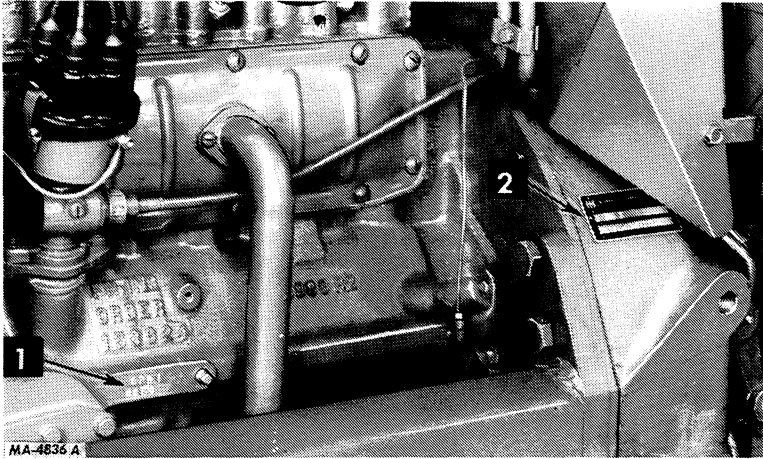
CONTENTS

THREE-POINT HITCH	35 to 45	COOLING SYSTEM	53 to 56
Hitch Category Chart		Temperature Gauge	
Lift Links and Leveling Cranks		Filling the Cooling System	
Lift Links and Turnbuckles		Adding Coolant to the Cooling System	
Rigid Hitch Position		Cleaning the Cooling System	
Free to Float Position		Radiator Core and Transmission	
Hitch Lower Links		Oil Cooler	
Hitch Upper Link		Water Pump, Alternator-Generator, and Fan Belt Tension	
Lateral Limiter			
Lateral Limiter Adjustment Procedure			
Sway Limiter Blocks			
Coupling the Equipment			
Example of Operating the Three-Point Hitch with Draft Control			
Uncoupling the Equipment			
Removing the Three-Point Hitch Linkage			
Installing the Three-Point Hitch Linkage			
HITCHING TRAILING EQUIPMENT TO THE TRACTOR	46, 47	AIR CLEANING SYSTEM	56, 57, 58
Swinging Drawbar for Tractors Without Three-Point Hitch		Dry-Type Air Cleaner	
Swinging Drawbar for Tractors With Three-Point Hitch		Air Cleaner Service Indicator	
		Removing and Cleaning the Large Filter Element	
		Safety Element	
		Automatic Dust Unloader	
AUXILIARY VALVES, REMOTE CYLINDERS, AND HYDRAULIC OUTLETS	47 to 51	ELECTRICAL SYSTEM	58 to 63
Connecting Hoses to the Rear Hydraulic Outlets		Charging System for Alternator-Generator	
Connecting Hoses to the Front Hydraulic Outlets		Cranking System	
Thermal Expansion Pressures (Front Hydraulic Outlet Only)		Ignition System	
Operating Double-Acting Cylinders		Lighting System	
Operating Single-Acting Cylinders		Lights	
Float Lockout		Warning Lights	
Adding Fluid After Connecting Cylinders and Hoses		Lighting Switch Positions	
Freeing the System of Trapped Air		Transmission Oil Pressure Tellite	
Simultaneous Raise		Fuse	
		Battery	
POWER TAKE-OFF	52, 53	FRONT WHEELS	63 to 67
Operating the Independent Power Take-Off		Adjustable Wide Tread Front Axle	
		Farmall Hi-Clear Adjustable Front Axle	
		All-Wheel Drive Front Axle	
		Tricycle Front Axle	
		Adjusting Wide-Tread Front Axle for Tread Widths	
		Adjusting the Toe-In	

CONTENTS

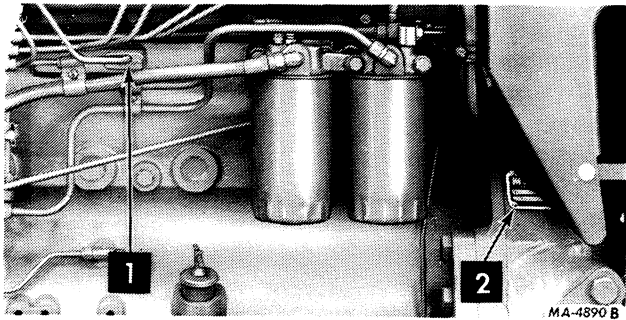
<p>REAR WHEELS Adjusting the Tread Widths Assembling the Rear Wheel Double-Beaded Rims Reversing the Rear Wheels Wheels with Fixed Rims Wheels with Double-Beaded Rims Tractors with Wedge Wheels Tractors with Hub Clamp Wheels Dual Rear Wheels</p>	<p>67 to 75</p>	<p>To Aid Starting Gear Lubricant Lubrication Fitting Grease Engine Oil Filter Changing the Engine Oil Filters Hydraulic Fluid Filter Lubricating the Front Wheels</p>	
		<p>LUBRICATION TABLE</p>	<p>87, 88</p>
<p>WEIGHTS Front End Weights Front End Weight Hold Down and Locking Device All-Wheel Drive Tractors Rear Wheel Weights</p>	<p>76, 77, 78</p>	<p>LUBRICATION GUIDE</p>	<p>89 to 95</p>
		<p>PREVENTIVE MAINTENANCE GUIDE</p>	<p>96, 97, 98</p>
<p>TIRES Inflation Front Tire Inflation Pressure Rear Tire Inflation Pressure</p>	<p>78, 79, 80</p>	<p>CAB EQUIPMENT PREVENTIVE MAINTENANCE Door Adjustment Pressurizer Filter Recirculation Air Filter Air Conditioner Condenser Refrigerant Sight Glass Adjusting the Compressor Belt Tension Compressor Pulley and Clutch Compressor Oil Level Coolant Shut-Off Fuel Shut-Off Electrical Miscellaneous</p>	<p>99 to 102</p>
<p>STORING THE TRACTOR Storage Removing From Storage</p>	<p>81, 82</p>		
<p>COLD WEATHER PRECAUTIONS Fuel System Electrical Lubrication Cooling System</p>	<p>82</p>	<p>SPECIFICATIONS</p>	<p>103 to 108</p>
<p>LUBRICATION Oil Level Oil Pump Engine Oil Cooler Engine Oil</p>	<p>83 to 86</p>	<p>OPTIONAL EQUIPMENT</p>	<p>109</p>
		<p>METRIC (SI) MEASUREMENTS</p>	<p>110</p>

SERIAL NUMBERS



1 - 766 Gasoline engine serial number
C-291 _____

2 - 766 Tractor serial number

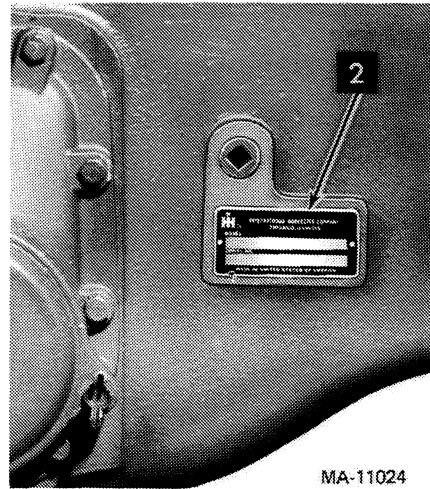


1 - 766 Diesel engine serial number
D-360 _____

1 - 966 Diesel engine serial number
D-414 _____

1 - 1066 Diesel engine serial number
DT-414 _____

1 - 1466 Diesel engine serial number
DT-436 _____



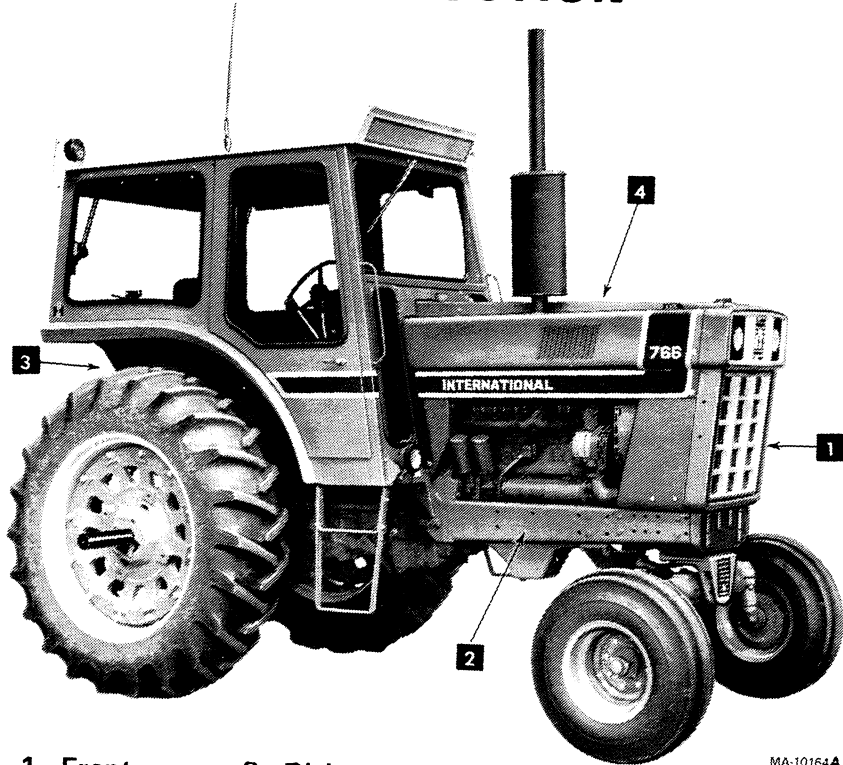
2 - 766 Tractor serial number

2 - 966 Tractor serial number

2 - 1066 Tractor serial number

2 - 1466 Tractor serial number

INTRODUCTION



1 - Front

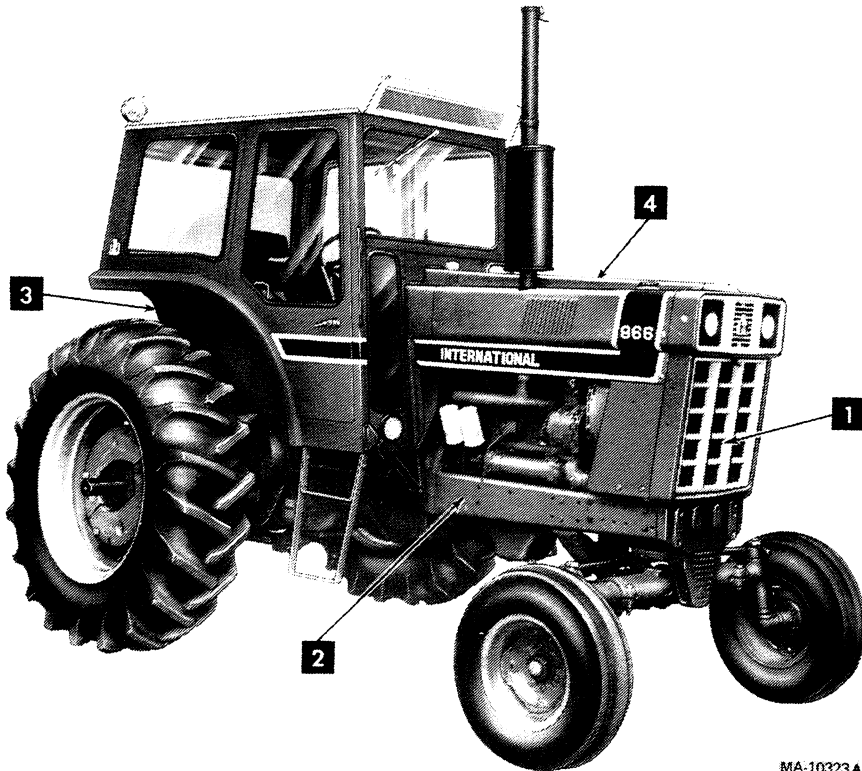
2 - Right

3 - Rear

4 - Left

MA-10164A

Terms of location for 766 tractor.



1 - Front

2 - Right

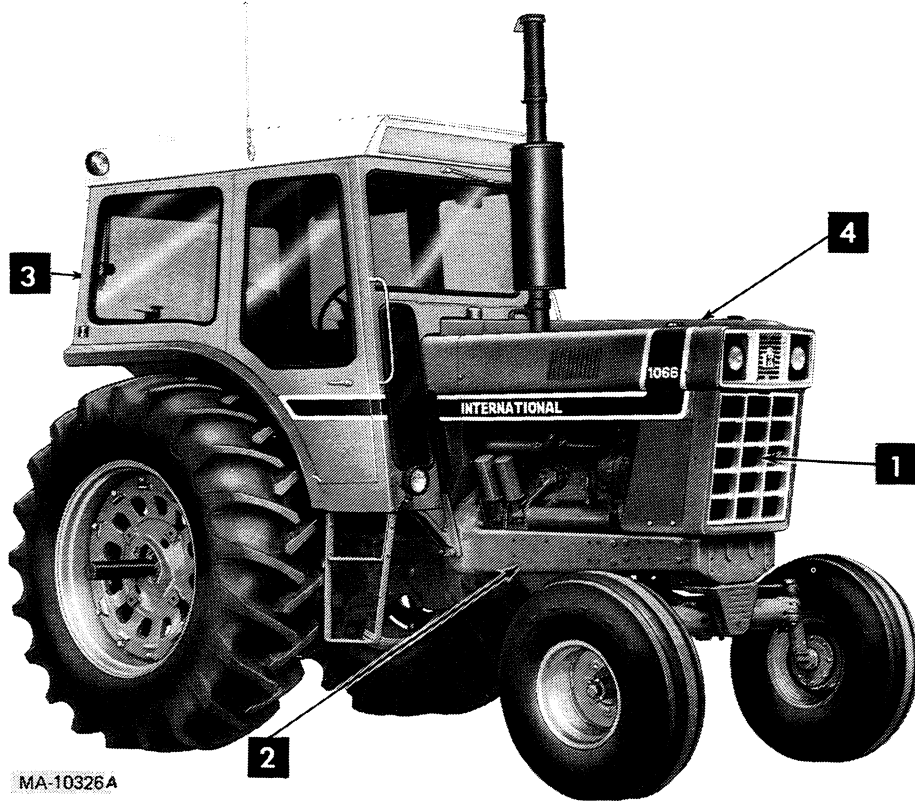
3 - Rear

4 - Left

MA-10323A

Terms of location for 966 tractor.

INTRODUCTION



MA-10326A

1 - Front

2 - Right

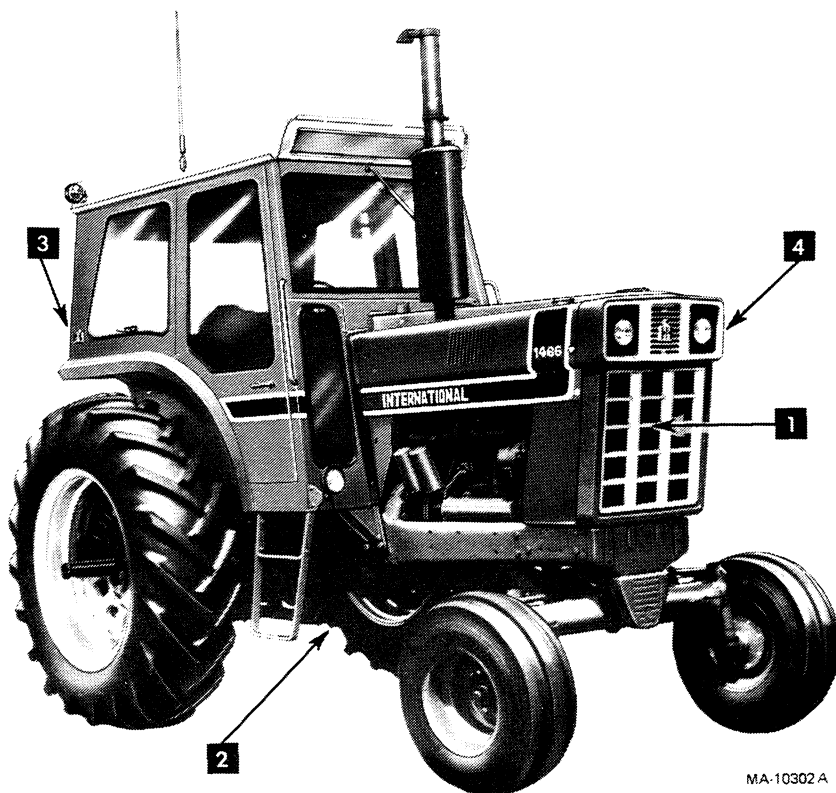
3 - Rear

4 - Left

Terms of location for 1066 tractor.

LEFT and RIGHT indicate the left and right sides of the tractor when facing forward in the driver's seat.

A variety of optional equipment and accessories is available. Where operating and maintaining instruction is required, it is included in the instruction for operating and maintaining the tractor. Disregard the instructions for equipment not on your tractor.



MA-10302A

1 - Front

2 - Right

3 - Rear

4 - Left

Terms of location for 1466 tractor.

Buy Now



Our support email:

ebooklibonline@outlook.com