

354 & 2300 Tractors

Operators Manual

1092614R2

Reprinted

CASE III



This symbol means ATTENTION! BECOME ALERT! YOUR SAFETY IS INVOLVED. The message that follows the symbol contains important information about your safety. Carefully read the message. Make sure you fully understand the causes of possible injury or death.

SB001

IF THIS MACHINE IS USED BY AN EMPLOYEE, IS LOANED, OR IS RENTED, MAKE SURE THAT THE OPERATOR UNDERSTANDS THE TWO INSTRUCTIONS BELOW.

BEFORE THE OPERATOR STARTS THE ENGINE:

1. GIVE INSTRUCTIONS TO THE OPERATOR ON SAFE AND CORRECT USE OF THE MACHINE.
2. MAKE SURE THE OPERATOR READS AND UNDERSTANDS THE OPERATOR'S MANUAL FOR THIS MACHINE.



IMPROPER OPERATION OF THIS MACHINE CAN CAUSE INJURY OR DEATH.

BEFORE STARTING THE ENGINE, DO THE FOLLOWING:

1. READ THE OPERATOR'S MANUAL.
2. READ ALL SAFETY DECALS ON THE MACHINE.
3. CLEAR THE AREA OF OTHER PERSONS.

LEARN AND PRACTICE SAFE USE OF MACHINE CONTROLS IN A SAFE, CLEAR AREA BEFORE YOU OPERATE THIS MACHINE ON A JOB SITE.

It is your responsibility to observe pertinent laws and regulations and to follow manufacturer's instructions on machine operation and maintenance.

See your Authorized Case dealer for additional operator's manuals, parts catalogs, and service manuals.

TO THE OWNER

The purpose of this manual is to assist you in realizing the benefits you anticipated when you purchased this International Harvester product.

The way you operate and the care you give this equipment will have much to do with its successful performance. This manual has been carefully prepared and the information arranged and illustrated to make it as easy as possible for you to find the information you wish. It will pay you to read the entire manual carefully before operating and keep it handy for future reference. Your International Dealer or Distributor will be glad to answer any further questions you may have on the operation or care of this product.

It is the policy of International Harvester Company to improve its products whenever it is possible and practical to do so. We reserve the right to make changes or add improvements at any time without incurring any obligation to make such changes on products sold previously.

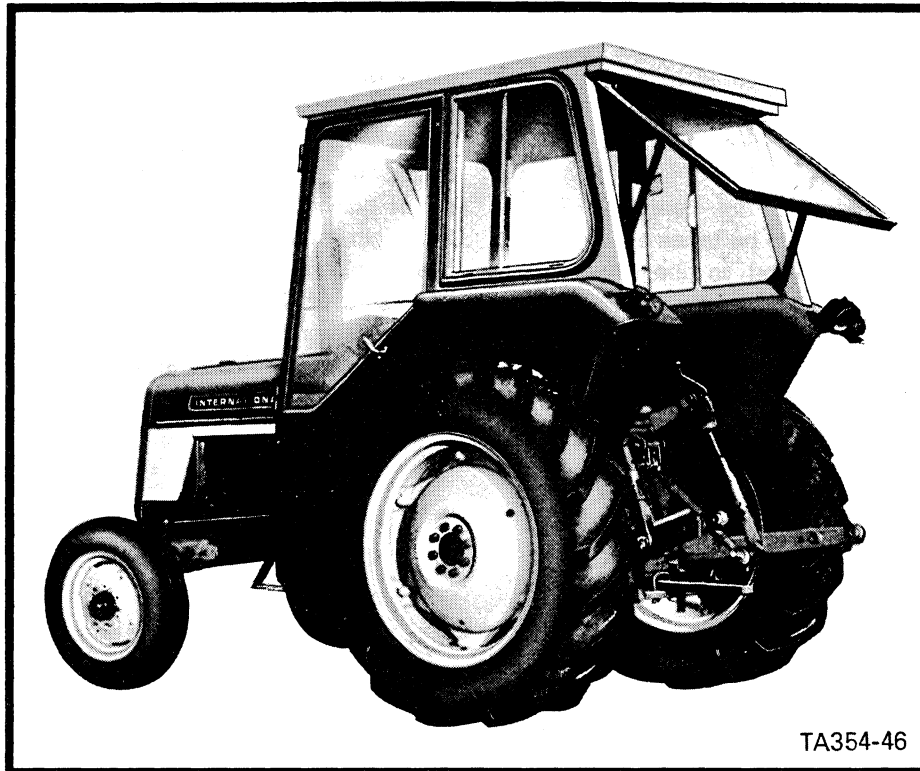
CONTENTS

	Page No.
DESCRIPTION	1
INTRODUCTION	2
SPECIFICATIONS	3
INSTRUMENTS AND CONTROLS	6
FOR BETTER PERFORMANCE AND SAFE OPERATION	9
BEFORE OPERATING A NEW TRACTOR	10
OPERATION	
OPERATING THE ENGINE	12
OPERATING THE TRACTOR	13
HYDRAULIC SYSTEM	14
REMOTE CYLINDERS	16
AUXILIARY CONTROL VALVE	17
PREPARING THE TRACTOR FOR WORK	
DAILY MAINTENANCE	18
THREE POINT LINKAGE	18
CHECK CHAINS	20
AUTOMATIC HITCH (VARY-TOUCH)	21
POWER TAKE-OFF ATTACHMENTS	23
TYRE PRESSURES AND BALLASTING	25
WHEEL TREAD ADJUSTMENT	26
PREVENTIVE MAINTENANCE	
LUBRICANT SPECIFICATIONS	28
LUBRICATION GUIDE	29
LUBRICATION CHART	30
HOT WEATHER PRECAUTIONS	32
COLD WEATHER PRECAUTIONS	33
ROUTINE SERVICING SCHEDULE	34
MAINTENANCE	
COOLING SYSTEM	36
AIRCLEANING SYSTEM	38
ENGINE SERVICING	39
FUEL SYSTEM	41
ENGINE CLUTCH	43
TRANSMISSION	45
WHEELS AND STEERING	46
BRAKES	47
HYDRAULIC SYSTEM	48
ELECTRICAL SYSTEM	49
GENERATOR	50
STARTING MOTOR	51
SEALED BEAM UNIT	52
GLOWPLUGS	53
WIRING DIAGRAM	54
LEGEND FOR WIRING DIAGRAM	55
FAULT TRACING CHART	59

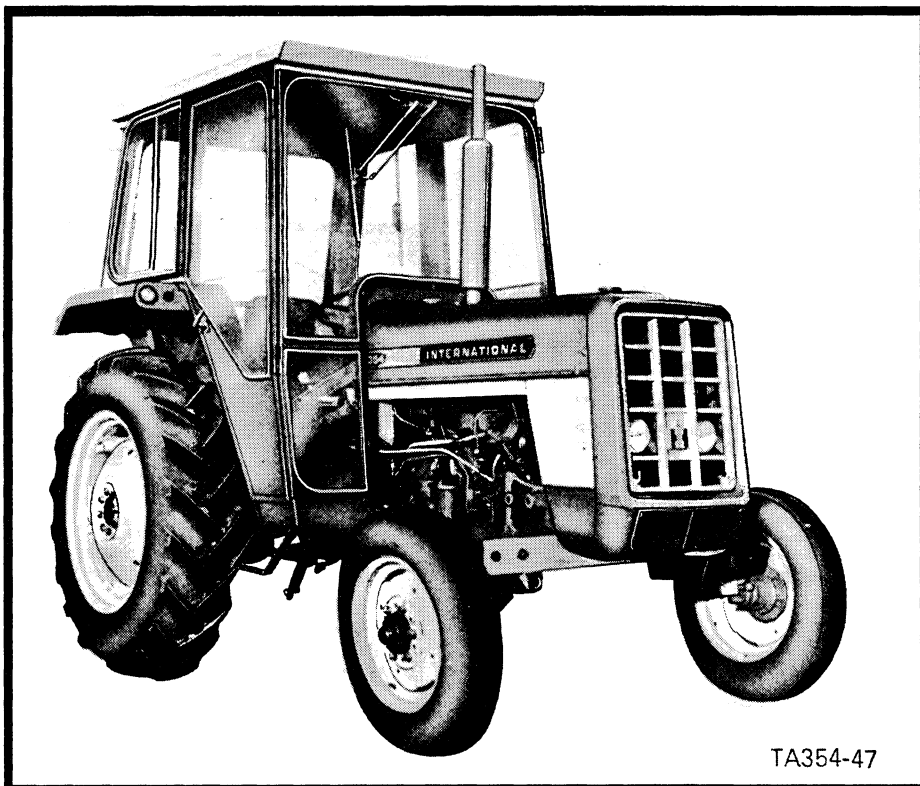
CONTENTS - Continued

	Page No.
STORING THE TRACTOR	61
STARTING THE ENGINE AFTER STORAGE	61
ATTACHMENTS	
WHEEL WEIGHTS	62
SUSPENSION SEAT	62
SELF-SEALING COUPLINGS	63
BELT PULLEY... ..	63
HAND OPERATED DRUM BRAKES	64
PETROL ENGINE TRACTOR	
SPECIFICATIONS	65
INSTRUMENTS AND CONTROLS	66
OPERATING THE ENGINE	67
MAINTENANCE	67
FAULT TRACING CHART	70
STORING THE TRACTOR	70
STARTING THE ENGINE AFTER STORAGE	70
ATTACHMENTS	71

DESCRIPTION



Illust.1 Left Rear View of 354 Tractor



Illust.2 Right Front View of 354 Tractor

INTRODUCTION

Compiled in this manual are the operating and maintenance instructions for INTERNATIONAL 354 and 2300 tractors.

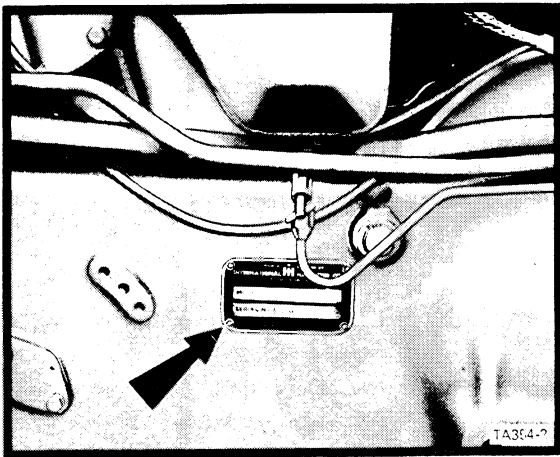
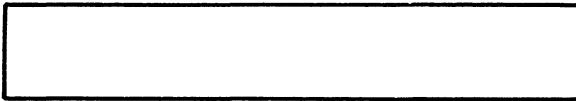
This material has been prepared in detail to help the operator to better understand the correct care and efficient operation of the tractor.

Throughout this manual the terms LEFT, RIGHT, FRONT and REAR are to be taken as those applicable to a person seated in the driver's seat facing the radiator.

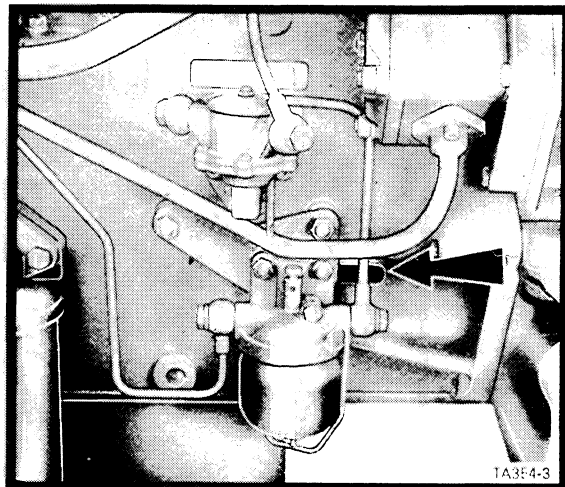
If information is required that is not given in this manual consult an International Harvester

dealer. Dealers are kept informed of the latest methods of servicing machines, they carry stocks of genuine I.H. service parts and are backed in every way by the full facilities of the International Harvester organisation.

When in need of service parts, always quote the tractor and engine serial numbers. The tractor serial number is stamped on a plate attached to the right side of the clutch housing (Illust.3). The engine serial number is stamped on the right side of the engine crankcase (Illust.4). For ready reference record these serial numbers in the space provided above each illustration.



Illust.3 Tractor Serial Number



Illust.4 Engine Serial Number

SPECIFICATIONS

ENGINE

Make and model	I.H. BD-144A
No. of cylinders	4
Bore	mm (in)	88.75 (3-3/8)
Stroke	mm (in)	101.6 (4)
Displacement	cm ³ (in ³)	2249.7 (144)
Valve clearance - HOT	mm (in)	0.508 (0.020)
Firing order	1 - 3 - 4 - 2
High idle	rev/min	2075
Low idle	rev/min	520 to 580
Rated governed	rev/min	1900

TRANSMISSION

No. of speeds	8 forward, 2 reverse
Clutch size												
Standard	mm (in)	254 (10)
Heavy duty	mm (in)	279.4 (11)
Dual - engine	mm (in)	279.4 (11)
Dual - P.T.O.	mm (in)	228.6 (9)

TRACTOR SPEEDS

On basic tyres at rated governed engine speed

GEAR	STANDARD	
	KPH	MPH
L1	2.4	1.5
L2	3.8	2.4
L3	5.4	3.4
H1	6.5	4.0
L4	8.1	5.1
H2	10.2	6.4
H3	14.6	9.1
H4	21.6	13.5
LOW REVERSE	3.6	2.25
HIGH REVERSE	9.7	6.1

P.T.O. SPEEDS

Refer to POWER TAKE-OFF ATTACHMENTS

HYDRAULIC SYSTEM

'Vary-Touch' Operating pressure	...	kg/cm ² (lb/in ²)	...	154.6 to 168.7 (2200 to 2400)
Lift at lower links, links horizontal	...	kg (lb)	...	1180 (2600)
Max. lift force at automatic hitch	...	kg (lb)	...	2495 (5500)

COOLING SYSTEM

Operating pressure	...	kg/cm ² (lb/in ²)	...	0.492 (7)
--------------------	-----	--	-----	-----------

Buy Now



Our support email:

ebooklibonline@outlook.com