


**International
484, 584, 684, 784,
and Hydro 84 Tractors
Operator's Manual**

1093396R2

Reprinted

CASE III




 *THIS SAFETY ALERT SYMBOL INDICATES IMPORTANT SAFETY MESSAGES IN THIS MANUAL. WHEN YOU SEE THIS SYMBOL, CAREFULLY READ THE MESSAGE THAT FOLLOWS AND BE ALERT TO THE POSSIBILITY OF PERSONAL INJURY OR DEATH.*

M171B

If Safety Decals on this machine use the words **Danger, Warning or Caution**, which are defined as follows:

- **DANGER:** Indicates an immediate hazardous situation which if not avoided, will result in death or serious injury. The color associated with Danger is RED.
- **WARNING:** Indicates an potentially hazardous situation which if not avoided, will result in serious injury. The color associated with Warning is ORANGE.
- **CAUTION:** Indicates an potentially hazardous situation which if not avoided, may result in minor or moderate injury. It may also be used to alert against unsafe practices. The color associated with Caution is YELLOW.

If Safety Decals on this machine are ISO two panel Pictorial, decals are defined as follows:

- The first panel indicates the nature of the hazard.
- The second panel indicates the appropriate avoidance of the hazard.
- Background color is YELLOW.
- Prohibition symbols such as   and  if used, are RED.



WARNING

IMPROPER OPERATION OF THIS MACHINE CAN CAUSE INJURY OR DEATH. BEFORE USING THIS MACHINE, MAKE CERTAIN THAT EVERY OPERATOR:

- Is instructed in safe and proper use of the machine.
- Reads and understands the Manual(s) pertaining to the machine.
- Reads and understands ALL Safety Decals on the machine.
- Clears the area of other persons.
- Learns and practices safe use of machine controls in a safe, clear area before operating this machine on a job site.

It is your responsibility to observe pertinent laws and regulations and follow Case Corporation instructions on machine operation and maintenance.

OPERATORS MANUAL

INTERNATIONAL

484, 584, 684, 784,

&

**Hydro 84
TRACTORS**

1093 396 R2

INTERNATIONAL HARVESTER COMPANY OF GREAT BRITAIN LIMITED

PO BOX 25

-

259 CITY ROAD

-

LONDON

-

EC1P 1AD

F/8/78 CP.

TO THE OWNER

The gear drive tractors including Row-Crop Models have synchromesh speed gears with sliding range gears. The H84 has a hydrostatic transmission and is also available as a Row-Crop Model.

Your new International Harvester tractor is designed to meet today's exacting operating requirements. The ease and comfort of operation, the ability to match ground speeds to engine power and work requirement, and the effortless versatility of the hydraulic system are intended to lighten your work and shorten your hours on the job.

Your local International Harvester dealer is interested in the performance you receive from this tractor. He has factory trained servicemen, informed in the latest method of servicing tractors, and modern tools, and original-equipment IH service parts which assure proper fit and good performance.

To obtain top performance and assure economical operation the tractor should be inspected, depending on its use, periodically, or at least once a year, by your International Harvester Dealer.

Before you operate the tractor, study this manual carefully. It has been prepared to help you

operate and maintain your tractor with utmost efficiency. New copies may be ordered from your dealer at a nominal price.

When in need of parts, always specify the tractor, engine and skidded unit serial numbers, including prefix and suffix letters. Write these serial numbers in the spaces provided below.

The skidded unit suffix letters denote the build of the unit.

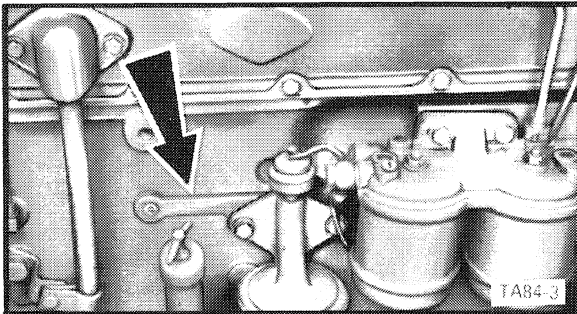
The first suffix letter denotes the drive train, code D for the slow speed and code E for the fast speed.

The second suffix letter denotes the bevel gear ratio, code R for 12:53 and code T for 11:52 bevel gear ratio.

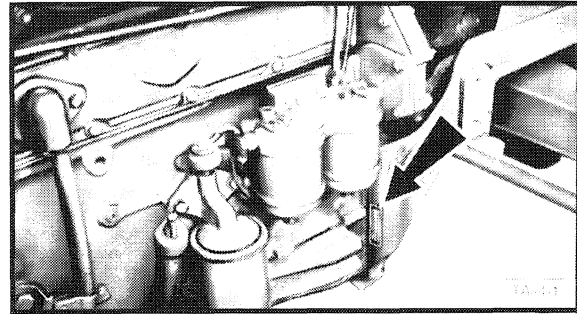
The third suffix denotes the IPTO installation. Code U for 555 rev/min, Code W for 580 rev/min, code X for 606 rev/min and code Y for 611 rev/min.

The 784 Row-Crop has a code D transmission, all other models have a code E transmission. Except for the 484 tractor all gear drive models have a code T bevel gear set.

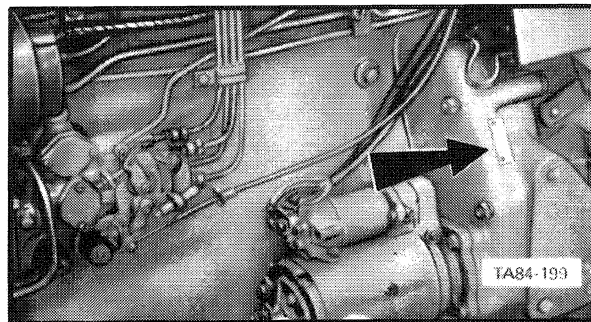
The 484 and H84 models have a code R bevel gear set.



Engine Serial Number _____



Tractor Serial Number _____



Skidded Unit Serial Number _____

TECHNICAL PUBLICATIONS AVAILABLE

Your International Harvester Dealer and his factory trained servicemen are best qualified to service your equipment. Up-to-date instructions and adequate special tools are also a part of your Dealer's service facilities.

This Operator's Manual was prepared to instruct you in proper operation and maintenance of your equipment. If you desire additional information you may purchase Service Manuals and/or Parts Catalogs. Additional copies of the Operator's Manual are also available.

Fill out the order blank and forward together with your check or money order in the appropriate amount (U.S. Funds) to:

International Harvester Company

PRINTING AND
DISTRIBUTION SERVICES

807 Blackhawk Drive

Westmont, Illinois 60559

Attention: Cashier

Cut Along This Line

-----Cut Along This Line-----

Title	Number	Qty.	Price Each
Operator's Manual 484, 584, 684, 784 and H84	1093 396 R2		4.30
Parts Catalog			
484	TC186		8.20
584	TC187		7.90
684 & Hydro 84	TC188		9.70
784	TC189		7.90
Service Manual			
Chassis	GSS1416-I		14.20
Engine and Fuel System	1377-H		11.40

TOTAL _____

Please Print

Name _____

Street Address _____

City _____

State _____

Zip Code _____

Date _____

Signed _____

Do not send cash or stamps

Prices subject to change without notice.

DELIVERY SERVICE FOR 484, 584, 684, 784 AND HYDRO 84 TRACTORS

This form must be filled out by the dealer and signed by both the dealer and the customer at the time of delivery.

Delivered to _____ Dealer _____

Address _____ Town _____

Town _____ Serial No. _____

State _____ Zip _____ Engine Serial No. _____

I have thoroughly instructed the buyer on the above described equipment which review included the Operator's Manual content, equipment care, adjustments, and safe operation. The warranty policy provisions were also explained and reviewed.

DEALER'S SIGNATURE

Above equipment and Operator's Manual have been received by me and I have been thoroughly instructed as to care, adjustments, safe operation and applicable warranty policy.

DATE

OWNER'S SIGNATURE

FOLD BACK HERE AND ADD CARBON

CUT ALONG THIS LINE FIRST

DEALER'S COPY

FOLD FORWARD HERE AND ADD CARBON

DELIVERY SERVICE FOR 484, 584, 684, 784 AND HYDRO 84 TRACTORS

This form must be filled out by the dealer and signed by both the dealer and the customer at the time of delivery.

Delivered to _____ Dealer _____

Address _____ Town _____

Town _____ Serial No. _____

State _____ Zip _____ Engine Serial No. _____

I have thoroughly instructed the buyer on the above described equipment which review included the Operator's Manual content, equipment care, adjustments, and safe operation. The warranty policy provisions were also explained and reviewed.

DEALER'S SIGNATURE

Above equipment and Operator's Manual have been received by me and I have been thoroughly instructed as to care, adjustments, safe operation and applicable warranty policy.

DATE

OWNER'S SIGNATURE

OWNER'S COPY

DELIVERY SERVICE FOR 484, 584, 684, 784 AND HYDRO 84 TRACTORS

This form must be filled out by the dealer and signed by both the dealer and the customer at the time of delivery.

Delivered to _____ Dealer _____

Address _____ Town _____

Town _____ Serial No. _____

State _____ Zip _____ Engine Serial No. _____

I have thoroughly instructed the buyer on the above described equipment which review included the Operator's Manual content, equipment care, adjustments, and safe operation. The warranty policy provisions were also explained and reviewed.

DEALER'S SIGNATURE

Above equipment and Operator's Manual have been received by me and I have been thoroughly instructed as to care, adjustments, safe operation and applicable warranty policy.

DATE

OWNER'S SIGNATURE

REGIONAL OFFICE COPY

CONTENTS

INTRODUCTION	1	Swinging Drawbar	25
		Storage Position	26
WORK SAFELY - FOLLOW THESE RULES	2 to 4	WHEELS AND TIRES	26 to 31
Before Starting	2	Front Wheels	26
During Operation	2	Adjusting Tread Widths	27
Transporting	3	Row Crop Tractors	27
After Operating	3	Tire Pressures and Ballasting	28
Dismounting	4	Rear Wheel Weights	29
After an Upset	4	Rear Tire Loads and Inflation Pressures	29
		Front End Weights	29
INSTRUMENTS AND CONTROLS	5 to 10	Front Tire Loads and Inflation Pressures	30
BEFORE OPERATING THE TRACTOR	11	Water Ballast	30
Tractor Break-in Procedure	12	Filling	30
OPERATING THE TRACTOR	12 to 18	PREVENTIVE MAINTENANCE	32 to 50
Starting the Engine	12	Cooling System	32
After Starting	12	Rust Prevention	32
Stopping the Engine	13	Adding Coolant to the System	32
Driving the Tractor	13	Draining the System	32
Driving Hydrostatic Tractors		Flushing the System	32
After Transporting or Servicing	14	Filling the System	33
Steering the Tractor	14	Cleaning the Radiator and	
Stopping the Tractor	14	Oil Cooler Cores	33
Driving on Public Roads	15	Fan Belt Tension	33
Towing the Tractor	15	Changing the Fan Belt	34
Tow Starting	15	AIRCLEANING SYSTEM	34
Parking Brake	16	Servicing the Aircleaner	34
Footbrakes	16	ENGINE SERVICING	36
Differential Lock	16	Engine Oil	36
Power Take-Off	17	Checking the Crankcase Oil Level	36
HYDRAULIC SYSTEM	19 to 23	Changing the Crankcase Oil	36
Position Control Lever	19	Changing the Filter	36
Adjustable Stop	19	Crankcase Breather	37
Drop Response	19	FUEL SYSTEM	37
Draft Control Lever	20	Diesel Fuel Storage	37
Raise Response Lever	20	Tractor Fuel System	38
Auxiliary Valves	21	Injection Pump	38
Self Sealing Couplings	21	Fuel Tank	38
Thermal Expansion Pressure	22	Fuel Filters	38
Auxiliary Valve Operation	22	Venting the System	39
Neutral and Float Lockout	23	Changing the Ether Start Container	39
THREE POINT LINKAGE	23 to 26	Injectors	39
Lift Links	23	ENGINE CLUTCH (GEAR DRIVE)	40
Lower Links	23	Adjustment	40
Upper Links	24	FOOT-N-INCH VALVE (HYDROSTATIC)	41
Check Chains	24	Adjustment	41
Stabilizers	24		
Coupling the Equipment	25		
Uncoupling the Equipment	25		
Drawbars	25		

Buy Now



Our support email:

ebooklibonline@outlook.com