

384
Tractor
Operators Manual

1093403R3

Reprinted

CASE 



*This symbol means **ATTENTION! BECOME ALERT! YOUR SAFETY IS INVOLVED.** The message that follows the symbol contains important information about your safety. Carefully read the message. Make sure you fully understand the causes of possible injury or death.*

SB001

IF THIS MACHINE IS USED BY AN EMPLOYEE, IS LOANED, OR IS RENTED, MAKE SURE THAT THE OPERATOR UNDERSTANDS THE TWO INSTRUCTIONS BELOW.

BEFORE THE OPERATOR STARTS THE ENGINE:

1. GIVE INSTRUCTIONS TO THE OPERATOR ON SAFE AND CORRECT USE OF THE MACHINE.
2. MAKE SURE THE OPERATOR READS AND UNDERSTANDS THE OPERATOR'S MANUAL FOR THIS MACHINE.



IMPROPER OPERATION OF THIS MACHINE CAN CAUSE INJURY OR DEATH.

BEFORE STARTING THE ENGINE, DO THE FOLLOWING:

1. READ THE OPERATOR'S MANUAL.
2. READ ALL SAFETY DECALS ON THE MACHINE.
3. CLEAR THE AREA OF OTHER PERSONS.

LEARN AND PRACTICE SAFE USE OF MACHINE CONTROLS IN A SAFE, CLEAR AREA BEFORE YOU OPERATE THIS MACHINE ON A JOB SITE.

It is your responsibility to observe pertinent laws and regulations and to follow manufacturer's instructions on machine operation and maintenance.

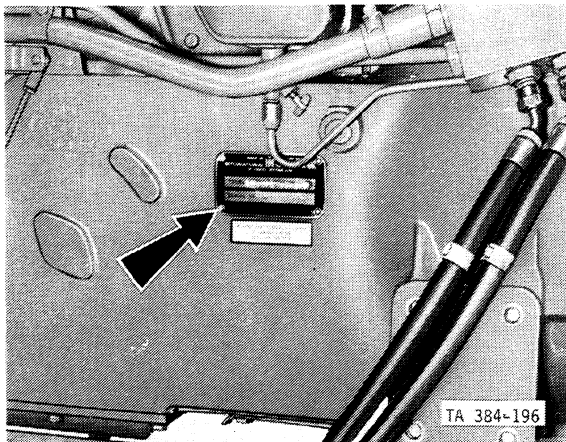
See your Authorized Case dealer for additional operator's manuals, parts catalogs, and service manuals.



TO THE OWNER

Your new International Harvester tractor is designed to meet today's exacting operating requirements. The ease and comfort of operation, the ability to match ground speeds to engine power and work requirement, and the effortless versatility of the hydraulic system are intended to lighten your work and shorten your hours on the job.

Your local International Harvester dealer is interested in the performance you receive from this tractor. He has factory trained servicemen, informed in the latest method of servicing tractors, and modern tools, and original-equipment IH service parts which assure proper fit and good performance.

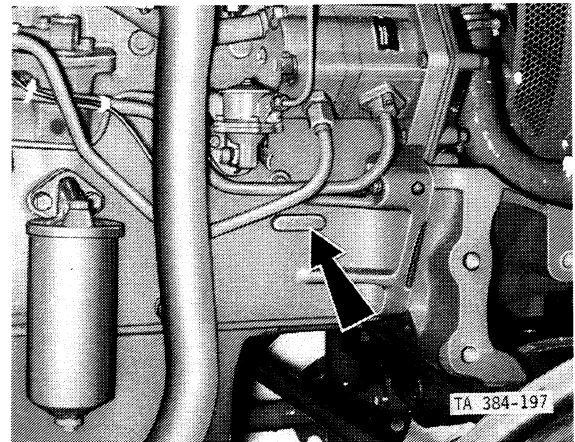


Tractor Serial No

To obtain top performance and assure economical operation the tractor should be inspected, depending on its use, periodically, or at least once a year, by your International Harvester Dealer.

Before you operate the tractor, study this manual carefully. It has been prepared to help you operate and maintain your tractor with utmost efficiency. New copies may be ordered from your dealer at a nominal price.

When in need of parts, always specify the tractor and engine serial numbers. Write these serial numbers in the space provided below the illustrations.



Engine Serial No

CONTENTS

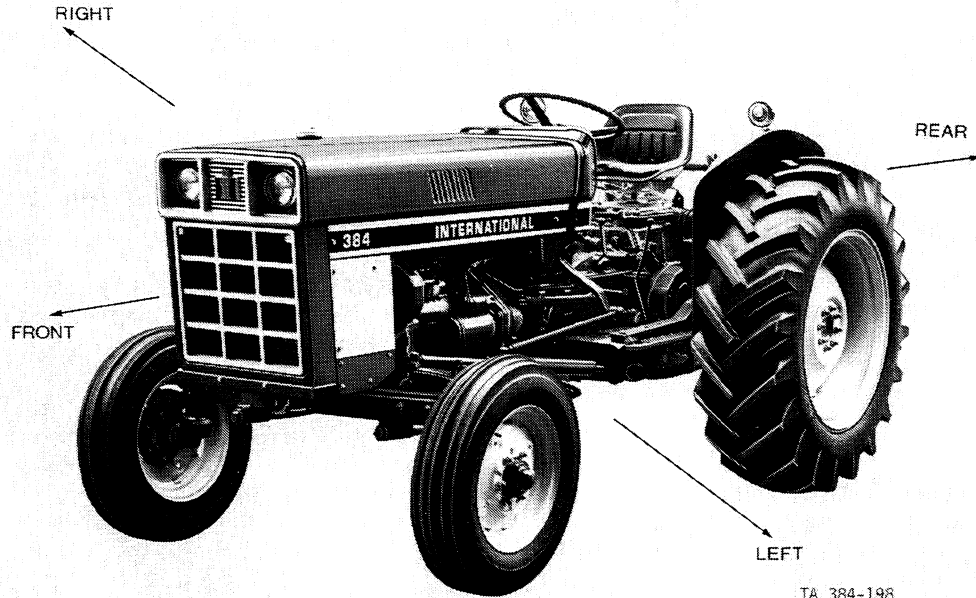


	Page No		Page No
INTRODUCTION	1	Filling	30
SAFETY - Work Safely Follow		Front End Weights	30
These Rules	2 to 5	Rear Wheel Weights	31
Before Starting	2	PREVENTIVE MAINTENANCE	32 to 56
During Operation	3	COOLING SYSTEM	32 to 34
Transporting	4	Rust Protection	32
After Operating	5	Adding Coolant	32
Dismounting	5	Draining the System	32
After an Upset	5	Flushing the System	33
INSTRUMENTS AND CONTROLS	6 to 10	Filling the System	33
BEFORE OPERATING THE TRACTOR	11	Cleaning the Radiator Core	33
ENGINE BREAK-IN PROCEDURE	12	Fan Belt Tension	34
OPERATING THE TRACTOR	13 to 19	Changing the Fan Belt	34
Starting the Engine	13	AIRCLEANING SYSTEM	35 to 36
After Starting	13	Servicing the Aircleaner	35
Stopping the Engine	14	ENGINE SERVICING	37 to 38
Driving the Tractor	14	Engine Oil	37
Steering the Tractor	14	Checking the Oil Level	37
Changing Gear	15	Changing the Oil and Filter	37
Stopping the Tractor	15	Crankcase Breather	38
Driving on Public Roads	15	FUEL SYSTEM	39 to 42
Towing the Tractor	16	Diesel Fuel Storage	39
Brake Pedal Lock	16	Tractor Fuel System	39
Footbrakes	17	Injection Pump	39
Differential Lock	17	Fuel Tank	39
Power Take-Off	18	Fuel Lift Pump	40
THE "VARY TOUCH" HYDRAULIC SYSTEM	19 to 24	Fuel Filters	40
General	19	Venting the System	41
Position Control Lever	20	Injectors	42
Adjustable Stop	20	ENGINE CLUTCH	43 to 44
Draft Control Lever	20	Lubrication	43
Response Control	21	Adjustment	43
Isolating Valve	22	Pedal Return Spring	44
Auxiliary Valves	22	TRANSMISSION	44 to 45
Self Sealing Couplings	23	Adding and Changing the Oil	44
Thermal Expansion Pressure	24	HYDRAULIC SYSTEM	45 to 46
THREE POINT LINKAGE	24 to 27	Adding Oil	45
Lift Links	24	Suction strainer and Orifice	45
Lower Links	24	Filter	45
Attaching Category 1 Equipment	24	Changing the Oil	46
Attaching Category 2 Equipment	25	STEERING	47
Check Chains	25	Adding Oil	47
Coupling the Equipment	26	Changing the Oil	47
Uncoupling the Equipment	26	WHEELS	47 to 49
Swinging Drawbar	26	Wheel Nuts	47
WHEELS AND TIRES	27 to 31	Front Wheel Bearings	47
Front Wheel Tread Adjustment	27	Front Wheel Alignment	48
Rear Wheels	28	BRAKES	50 to 51
Front Tire Loads and Inflation Pressures	29	Adjustment	50
Rear Tire Loads and Inflation Pressures	29	Brake Pedal Locking Lever	51
Water Ballast	30	ELECTRICAL SYSTEM	52 to 58
		Battery	52
		Removing the Battery	52
		Installing the Battery	52



CONTENTS

	Page No		Page No
ELECTRICAL SYSTEM (cont)			
Connecting Boost Batteries	53	Glowplug Indicator	57
Alternator	53	Trailer Socket	58
Alternator Belt Tension	53	STORING THE TRACTOR	58
Changing the Alternator Belt	54	REMOVING FROM STORAGE	59
Lighting	54	COLD WEATHER PRECAUTIONS	60
Changing a Sealed Beam Unit	54	Fuel System	60
Combination Turn Signal		Lubrication	60
and Warning Lights	55	Cooling System	60
Fuses	55	Battery	60
Instrument Panel Warning Lamps	56	LUBRICATION TABLE	61
Glowplugs	56	LUBRICATION GUIDE	62
Interconnecting Wires	56	PREVENTIVE MAINTENANCE GUIDE	65
Testing a Faulty Circuit	56	SPECIFICATIONS	67
Changing a Glowplug	57	EXTRA EQUIPMENT AND ACCESSORIES	68



TA 384-198

TERMS OF LOCATION



CAUTION! For your protection in the event of accidental upset, International Harvester Company recommends the use of a protective frame.

Compiled in this manual are the operating and maintenance instructions for the International 384 Tractor. This material has been prepared in detail to help the operator toward a better under-

standing of the tractor. Throughout the manual the terms LEFT, RIGHT, FRONT and REAR are to be taken as applicable to a person seated in the driving seat and facing the radiator.



CAUTION

Read the Operator's Manual.

Learn to operate this machine SAFELY.

Be alert. Observe ALL Safety Practices.

Machines can be hazardous in the hands of an UNFAMILIAR, UNTRAINED or COMPLACENT operator.

Don't risk INJURY or DEATH.



SAFETY

WORK SAFELY FOLLOW THESE RULES



CAUTION! Instructions given with this symbol are for personal safety. Be sure you and your workers follow them.

A CAREFUL OPERATOR IS THE BEST INSURANCE AGAINST ACCIDENT.

Do not operate this machine while under the influence of intoxicants or drugs (medications) that impair the senses or reactions.

Handle fuel with care - it is highly inflammable:-

Use an approved fuel container. Never remove the fuel tank cap or fill the fuel tank when the engine is running, hot, or indoors. Also, do not smoke when working around flammable fuel. Wipe up spilled fuel.

Before starting the engine check the fuel tank cap to be certain it is tightened completely against the stop.

Wherever possible remove the radiator cap only when the engine is stopped and cool to avoid possibility of severe burns or scalding.

Hydraulic fluid escaping under pressure can have enough force to penetrate the skin. Hydraulic fluid may also infect a minor cut or opening in the skin. IF INJURED BY ESCAPING FLUID, SEE A DOCTOR AT ONCE. Serious infection or reaction can result if medical treatment is not given immediately. Make sure all connections are tight and that hoses and lines are in good condition before applying pressure to the system. Relieve all pressure before disconnecting the lines or performing other work on the hydraulic system. To find a leak under pressure use a piece of cardboard or wood. Never use hands.

Ensure that exhaust muffler is securely in position so that exhaust gases are discharged above the operator.

Always carry a fully charged fire extinguisher and comprehensive first aid kit.

To assure the protection provided by design the protective structure must not be drilled, welded, cut or altered in any way.



CAUTION! Misuse or modification of this machine can cause:

- mechanical breakdown,
- property damage,
- injury or death.

Always use proper safety precautions. Tell your workers how to work safely.

BEFORE STARTING

Know how to use the controls and how to stop the tractor and/or implement quickly. READ THE TRACTOR and IMPLEMENT OPERATOR'S MANUAL THOROUGHLY.



WARNING

EXPLOSION HAZARD

DO NOT USE STARTING AIDS SUCH AS GASOLINE OR ETHER IN THE AIR INTAKE.



WORK SAFELY FOLLOW THESE RULES

Any person who operates the tractor must be instructed in the safe operation of the unit, its attachments and all controls. An operator must be capable of safely operating all controls of the tractor and its attachments.

Use the step and assist handles when mounting or dismounting from the tractor and from the left side only.

Wear sturdy, rough soled work shoes and close fitting slacks and shirts to avoid entanglement in the moving parts. Never operate a tractor in bare feet, sandals, or sneakers.

Clean dirt, trash and grease from operator's platforms, pedals, steps and steering wheel to prevent falling from the machine or loss of control which could result in serious injury.

Adjust tractor wheels to the widest practical setting to reduce the possibility of tipping.

Depress the clutch pedal, disengage the power take-off and shift into neutral before starting the engine.

Ensure that observers or assistants are well clear of the machine and equipment.

DURING OPERATION

Keep machine in good operating condition and ensure safety devices are correctly fitted. Use guards or shields as instructed in Operator's Manual.

To prevent injury, do not carry

passengers or give rides. Keep children, pets and by-standers out of the area. Only the operator should ride on the tractor and only in the seat. When operating a tractor fitted with a protective frame use the seat belt.



CAUTION! Do not use a seat belt while operating a tractor NOT having a protective frame fitted.

Check brakes and clutch pedal for correct operation.

Do not run the engine in confined areas such as storage buildings any longer than is necessary for immediate moving of the tractor out of or into the area. EXHAUST GASES ARE TOXIC. OPENING DOORS AND WINDOWS MAY NOT PROVIDE ADEQUATE VENTILATION.



CAUTION! Check overhead clearance carefully before entering or leaving buildings, driving under power lines, guy wires, bridges, low hanging tree branches or other situations where the operator may be struck or pulled from the tractor resulting in serious injury.

Never direct discharge of material from any attachment toward by-standers nor allow anyone in the area of the machine while in operation.

Use care when pulling loads or using heavy equipment:- A. Use only approved hitch points. B. Limit loads to those you can safely control. C. Don't turn too sharp, and use care when backing. D. Use counterweight or wheel weights when suggested in Operator's Manual.

Buy Now



Our support email:

ebooklibonline@outlook.com