

686 and Hydro 86 Tractors

Operators Manual

1096206R4

Reprinted

CASE III



*This symbol means **ATTENTION! BECOME ALERT! YOUR SAFETY IS INVOLVED.** The message that follows the symbol contains important information about your safety. Carefully read the message. Make sure you fully understand the causes of possible injury or death.*

SB001

IF THIS MACHINE IS USED BY AN EMPLOYEE, IS LOANED, OR IS RENTED, MAKE SURE THAT THE OPERATOR UNDERSTANDS THE TWO INSTRUCTIONS BELOW.

BEFORE THE OPERATOR STARTS THE ENGINE:

1. GIVE INSTRUCTIONS TO THE OPERATOR ON SAFE AND CORRECT USE OF THE MACHINE.
2. MAKE SURE THE OPERATOR READS AND UNDERSTANDS THE OPERATOR'S MANUAL FOR THIS MACHINE.



IMPROPER OPERATION OF THIS MACHINE CAN CAUSE INJURY OR DEATH.

BEFORE STARTING THE ENGINE, DO THE FOLLOWING:

1. READ THE OPERATOR'S MANUAL.
2. READ ALL SAFETY DECALS ON THE MACHINE.
3. CLEAR THE AREA OF OTHER PERSONS.

LEARN AND PRACTICE SAFE USE OF MACHINE CONTROLS IN A SAFE, CLEAR AREA BEFORE YOU OPERATE THIS MACHINE ON A JOB SITE.

It is your responsibility to observe pertinent laws and regulations and to follow manufacturer's instructions on machine operation and maintenance.

See your Authorized Case dealer for additional operator's manuals, parts catalogs, and service manuals.

To The Owner

Before you operate the tractor study this manual carefully. It has been prepared to help you operate and maintain your tractor with utmost efficiency.



This symbol is used to call your attention to instructions concerning your personal safety. Be sure to observe and follow these instructions.

Assembled in this manual are operation, lubrication, and maintenance instructions for the International 686 and Hydro 86 Tractors. This material has been prepared in detail in the hope that it will help you to better understand the correct care and efficient operation of your tractor.

For prompt, efficient service, always specify the tractor model and serial numbers, including prefix and suffix letters. Write these serial numbers in the spaces provided under "Serial Numbers".

Your new International Harvester tractor is designed to meet today's exacting operating requirements. The ease and comfort of operation, the ability to match ground speeds to engine power and work requirement, and the effortless versatility of the hydraulic system are intended to lighten your work and shorten your hours on the job.

Your local International Harvester dealer is interested in the performance you receive from these tractors. He has factory-trained servicemen, informed in the latest method of servicing tractors, modern tools, and original-equipment IH service parts which assure proper fit and good performance.

To obtain top performance and assure economical operation the tractor should be inspected, depending on its use, periodically, or at least once a year by your International Harvester Dealer.

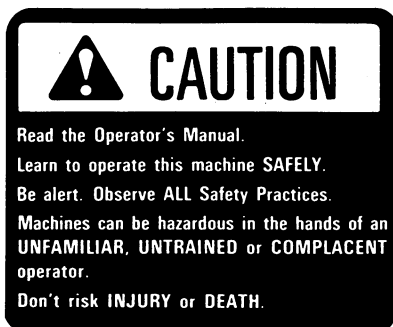


Universal symbols are used to pictorially identify various tractor instruments and controls. Throughout this manual, an identifying symbol is placed by the instructions like this example for engine coolant temperature. The waves signify water or coolant and the thermometer indicates temperature. Regardless of the language used in a nation, and without translation, this symbol means water or coolant temperature.

Optional equipment and accessories is available. Disregard the instructions for equipment not on your tractor.

METRIC (SI) MEASUREMENTS

A standard of metric measurement known as International System of Units (SI) has been adopted for world-wide use. English Units followed by Metric Equivalents are used throughout this manual. (Metric Equivalents are given in parentheses.)



MA-10034

CONTENTS

TO THE OWNER	Inside Front Cover	Starting Procedure for Hydrostatic Drive Tractors After Transporting on Truck or Flatcar	15
SERIAL NUMBERS	4	Towing the Tractor	16
WORK SAFELY - FOLLOW THESE RULES	6, 7	Tractor Break-in Procedure Seat	16 17
Servicing and Before Starting	6	ENGINE AND FUEL SYSTEM	18 to 20
Starting	6	Warranty Notice	19
During Operation	6	Fuel System	19
Transporting	7	Fuel Injection Pump and Nozzles	20
Before Dismounting	7	COOLING SYSTEM	20 to 22
Dismounting	7	Coolants and Cooling System Conditioner	20
After an Upset	7	Checking the Coolant Level	21
INSTRUMENTS AND CONTROLS	8,9	Draining and Filling the Cooling System	21
Instrument Panel and Controls	8	Hoses and Clamps	22
Speed Ratio Control	9	Thermostat	22
Seat Controls	9	Cleaning the Radiator and Transmission Oil Cooler Core Fins	22
Hydraulic Controls	9	Coolant System Filter and Conditioner	22
BEFORE OPERATING YOUR TRACTOR	10	Water Pump, Alternator- Generator and Fan Belt Tension	22
OPERATING THE TRACTOR	10 to 17	AIR CLEANING SYSTEM	22 to 24
Neutral Starting Switch	10	Removing and Cleaning the Filter Element	23
Starting the Engine	10	Inspection	24
Stopping the Engine	11	Automatic Dust Unloader	24
With the Engine Running	12	ELECTRICAL SYSTEM	24 to 28
Steering the Tractor	13	Charging System for Alternator-Generator	24
Driving the Tractor (Gear Drive)	13	Cranking System	25
Stopping the Tractor (Gear Drive)	13	Lighting System	25
Driving the Tractor (Hydrostatic Drive)	13	Lights	25
Stopping the Tractor (Hydrostatic Drive)	14	Combination Turn Signals and Warning Lights	25
Speedometer - Tachometer, Hourmeter	14	Tellites	26
Selecting Ground Speeds (Gear Drive)	14	Fuses	26
Torque Amplifier (Gear Drive)	14	Batteries	26
Brake Lock Rod	15		
Selecting Ground Speeds (Hydrostatic Drive)	15		

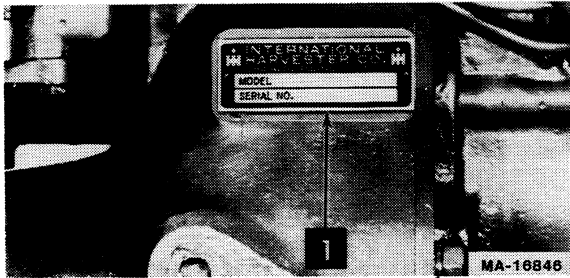
CONTENTS

<p>HYDRAULIC CONTROLS FOR THREE-POINT HITCH 29 to 32</p> <p>Position Control 29</p> <p>Position Control Adjustable Stop 29</p> <p>Draft Control 30</p> <p>Run Range 32</p> <p>THREE-POINT HITCH 33 to 37</p> <p>Lift Links and Leveling Cranks 33</p> <p>Hitch Lower Links 34</p> <p>Hitch Upper Link 34</p> <p>Lateral Limiter 34</p> <p>Coupling the Equipment 35</p> <p>Examples of Operating the Three-Point Hitch with Draft Control 36</p> <p>Uncoupling the Equipment 37</p> <p>HITCHING TRAILING EQUIPMENT TO THE TRACTOR 38,39</p> <p>Fixed-Type Drawbar 38</p> <p>Swinging Drawbar 38</p> <p>Telescoping-Type Swinging Drawbar 38</p> <p>AUXILIARY VALVES, REMOTE CYLINDERS AND HYDRAULIC OUTLETS 40 to 43</p> <p>Connecting Hoses to the Hydraulic Outlets 40</p> <p>Thermal Expansion Pressures 42</p> <p>Check Valves 42</p> <p>Operating Double Acting Cylinders 42</p> <p>Operating Single Acting Cylinders 43</p> <p>Float Lockout 43</p> <p>Adding Fluid After Connecting Cylinders and Hoses 43</p> <p>Freeing the System of Trapped Air 43</p> <p>POWER TAKE-OFF 44</p> <p>Operating the Independent Power Take-Off 44</p>	<p>FRONT WHEELS 45 to 47</p> <p>Adjustable Wide-Tread Front Axle 45</p> <p>Farmall Hi-Clear Adjustable Front Axle 45</p> <p>Adjusting Wide-Tread Front Axle for Tread Widths 46</p> <p>Adjusting the Toe-In 47</p> <p>REAR WHEELS 48 to 50</p> <p>Adjusting the Tread Widths 48</p> <p>Assembling the Rear Wheel Double-Beaded Rims 48</p> <p>Reversing the Rear Wheels 48</p> <p>Hub Clamp Studs 48</p> <p>Wheels with Double-Beaded Rims 49</p> <p>Dual Rear Wheels 50</p> <p>TIRES 51 to 53</p> <p>Inflation 51</p> <p>Front Tire Inflation Pressure 52</p> <p>Rear Tire Inflation Pressure 53</p> <p>WEIGHTS 54 to 56</p> <p>Front End Weights 54</p> <p>Front End Weight Hold Down and Locking Device 54</p> <p>Front Wheel Weights 55</p> <p>Rear Wheel Weights (Two Pieces) 56</p> <p>Liquid Ballast in Rear Tires 56</p> <p>COLD WEATHER PRECAUTIONS 57</p> <p>Fuel System 57</p> <p>Electrical 57</p> <p>Lubrication 57</p> <p>Cooling System 57</p> <p>STORING THE TRACTOR 57,58</p> <p>Storage 57</p> <p>Removing From Storage 58</p>
--	--

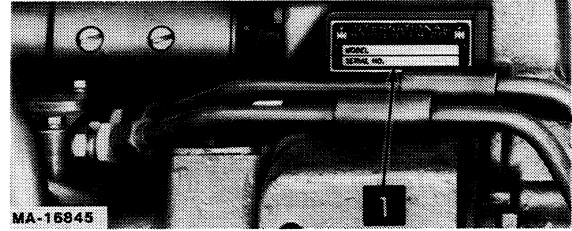
CONTENTS

LUBRICATION	59 to 62	LUBRICATION GUIDE	64 to 68
Engine Oil	59	PREVENTIVE MAINTENANCE	
Gear Lubricant	59	GUIDE	69 to 71
Lubrication Fitting Grease	60	SPECIFICATIONS	72 to 76
Engine Oil Filter	60	OPTIONAL EQUIPMENT	77
Hydraulic Fluid Filter	60	METRIC (SI) MEASUREMENTS	Inside
Hydrostatic Drive			Back
Hydraulic Fluid Filter	61		Cover
Hydrostatic Drive Return Line			
Hydraulic Fluid Filter	62		
Lubricating the Front Wheels	62		
LUBRICATION TABLE	63		

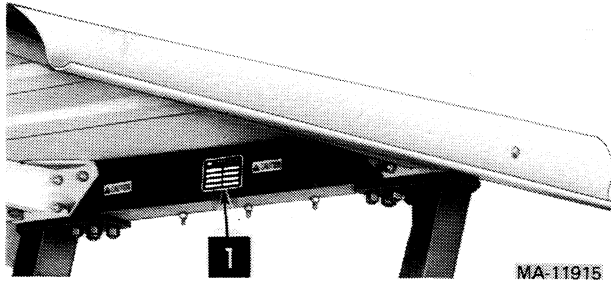
SERIAL NUMBERS



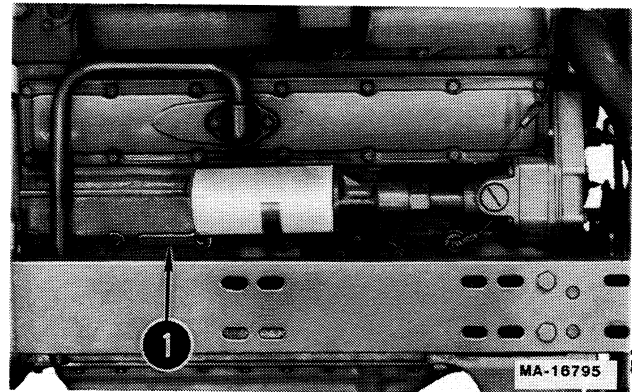
1 - 686 Tractor serial number



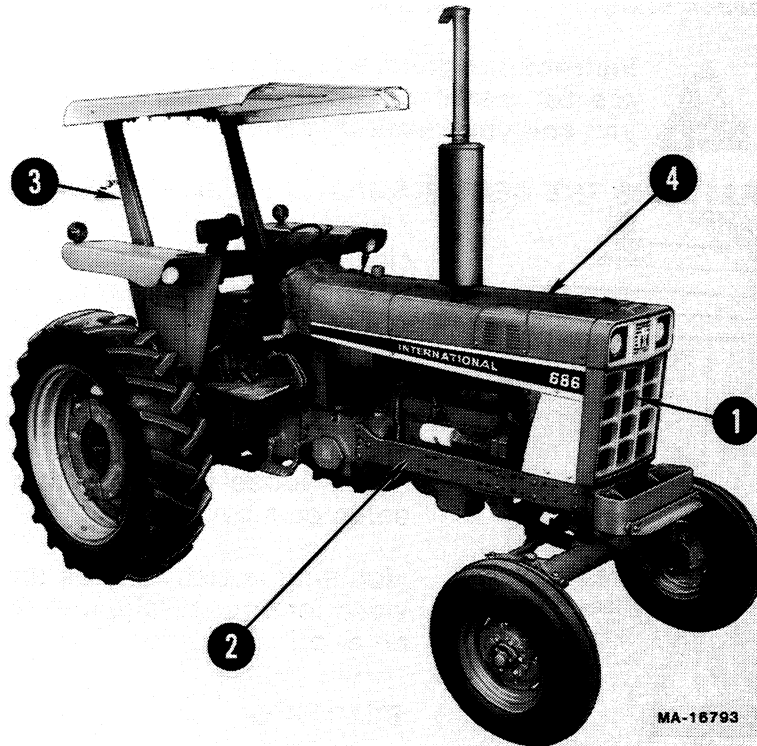
1 - Hydro 86 Tractor serial number



1 - Rops model and serial number
(inside frame crossbar)



1 - Diesel engine serial number
D-310



1-Front

2-Right

3-Rear

4-Left

**Terms of location 686 Tractor
Hydro 86 Tractor is similar**

 **CAUTION**

Read the Operator's Manual.
Learn to operate this machine **SAFELY**.
Be alert. Observe **ALL** Safety Practices.
Machines can be hazardous in the hands of an
UNFAMILIAR, UNTRAINED or COMPLACENT
operator.
Don't risk **INJURY or DEATH**.

MA-10034

WORK SAFELY — FOLLOW THESE RULES



Instructions given with this symbol are for personal safety. Be sure you and your workers follow them.

A CAREFUL OPERATOR IS THE BEST INSURANCE AGAINST AN ACCIDENT



Always keep the operator's compartment clean. Keep dirt, trash, and grease from the pedals, steps, mounting handles, steering wheel, and controls.

Always carry a "Charged" fire extinguisher and a first aid kit.

Avoid loose-fitting clothing, which could catch on moving parts.

Mounting assist handles and steps are provided for your safety. Use them when getting on or off the tractor.

STARTING

Know the controls and what they do. Be in the operator's seat and fasten the seat belt. Place the transmission and all other controls in neutral before starting the engine.

Be sure power take-off lever is in the "OFF" or disengaged position before starting the engine. Make sure that the helpers or observers stand clear of the equipment.

Make sure the area is well ventilated.

DURING OPERATION

Carefully supervise inexperienced operators.

Hydraulic fluid escaping under pressure can have enough force to penetrate the skin. Hydraulic fluid may also infect a minor cut or opening in the skin. **If injured by escaping fluid, see a doctor at once.** Serious infection or reaction can result if medical treatment is not given immediately. Make sure all connections are tight and that hoses and lines are in good condition before applying pressure to the system. Relieve all pressure before disconnecting the lines or performing other work on the hydraulic system. To find a leak under pressure use a small piece of cardboard or wood. Never use hands.



Before handling ANY equipment, READ the OPERATORS MANUAL.

MA-16875

SERVICING AND BEFORE STARTING

Carefully supervise inexperienced operators.

When fueling a tractor, keep any type of open flame away. Do not smoke.

Check coolant and engine oil levels, and perform any other necessary services before starting the engine.



Turn the radiator cap slowly counter clockwise to the pressure release point to allow the pressure or any steam to escape; then press down on the cap and continue to turn until the cap is free to be removed.

Check brakes and clutch (Gear Drive), foot-n-inch pedal (Hydrostatic Drive) for correct operation.

Reduce tipping hazards by spreading wheels as far apart as your work program permits.

Be sure muffler and exhaust pipe are in place so exhaust gases are discharged above the operator.

Buy Now



Our support email:

ebooklibonline@outlook.com