

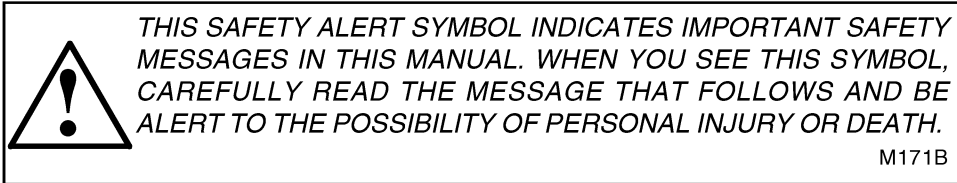
**786, 886, 986, 1086,  
1486, 1586 & Hydro-186  
Tractors**

**Operators Manual**

1096207R4

Reprinted




**CASE III**



If Safety Decals on this machine use the words **Danger, Warning or Caution**, which are defined as follows:

- **DANGER:** Indicates an immediate hazardous situation which if not avoided, will result in death or serious injury. The color associated with Danger is RED.
- **WARNING:** Indicates an potentially hazardous situation which if not avoided, will result in serious injury. The color associated with Warning is ORANGE.
- **CAUTION:** Indicates an potentially hazardous situation which if not avoided, may result in minor or moderate injury. It may also be used to alert against unsafe practices. The color associated with Caution is YELLOW.

If Safety Decals on this machine are ISO two panel Pictorial, decals are defined as follows:

- The first panel indicates the nature of the hazard.
- The second panel indicates the appropriate avoidance of the hazard.
- Background color is YELLOW.
- Prohibition symbols such as   and  if used, are RED.



# WARNING

IMPROPER OPERATION OF THIS MACHINE CAN CAUSE INJURY OR DEATH. BEFORE USING THIS MACHINE, MAKE CERTAIN THAT EVERY OPERATOR:

- Is instructed in safe and proper use of the machine.
- Reads and understands the Manual(s) pertaining to the machine.
- Reads and understands ALL Safety Decals on the machine.
- Clears the area of other persons.
- Learns and practices safe use of machine controls in a safe, clear area before operating this machine on a job site.

It is your responsibility to observe pertinent laws and regulations and follow Case Corporation instructions on machine operation and maintenance.

# TO THE OWNER

Before you operate the tractor study this manual carefully. It has been prepared to help you operate and maintain your tractor with utmost efficiency.



This symbol is used to call your attention to instructions concerning your personal safety. Be sure to observe and follow these instructions.

Assembled in this manual are operation, lubrications, and maintenance instructions for the International 786, 886, 986, 1086, 1486, 1586, and Hydro 186 Tractors. This material has been prepared in detail in the hope that it will help you to better understand the correct care and efficient operation of your tractor.

886 tractors with tractor serial number 14471 and below are equipped with D-360 engines. 886 tractors with tractor serial number 14472 and above are equipped with D-358 engines.

For prompt, efficient service, always specify the tractor model and serial numbers, including prefix and suffix letters. Write these serial numbers in the spaces provided under "Serial Numbers".

Your new International Harvester tractor is designed to meet today's exacting operating requirement. The ease and comfort of operation, the ability to match ground speeds to engine power and work requirement, and the effortless versatility of the hydraulic system are intended to lighten your work and shorten your hours on the job.

Your local International Harvester dealer is interested in the performance you receive from these tractors. He has factory-trained servicemen, informed in the latest method of servicing tractors, modern tools, and original-equipment IH service parts which assure proper fit and good performance.

To obtain top performance and assure economical operation the tractor should be inspected, depending on its use, periodically, or at least once a year by your International Harvester Dealer.



Universal symbols are used to pictorially identify various tractor instruments and controls. Throughout this manual, an identifying symbol is placed by the instructions like this example for engine coolant temperature. The waves signify water or coolant and the thermometer indicates temperature. Regardless of the language used in a nation, and without translation, this symbol means water or coolant temperature.

The nuts and bolts used to attach the front weight bracket to the bolster and the alternator-generator to the engine have been changed from "Inch" to "Metric" sizes. Be careful to use the correct sizes when replacing them. Be sure to use the proper size tools.

Optional equipment and accessories is available. Disregard the instructions for equipment not on your tractor.

## METRIC (SI) MEASUREMENTS

A standard of metric measurement known as International System of Units (SI) has been adopted for world-wide use. English Units followed by Metric Equivalents are used throughout this manual. (Metric Equivalents are given in parenthesis.)

# CONTENTS

<b>TO THE OWNER</b>	<b>Inside Front Cover</b>	Data Center Exhaust Gas Temperature Selecting Ground Speeds (Gear Drive) Torque Amplifier (Gear Drive) Park Selecting Ground Speeds (Hydrostatic Drive) Starting Procedure for Hydrostatic Drive Tractors After Transporting on Truck or Flatcar Towing the Tractor Tractor Break-in Procedure	20 21 21 22 22 22 22 23 23 24
<b>SERIAL NUMBERS</b>			
<b>TERMS OF LOCATION</b>			
<b>WORK SAFELY – FOLLOW THESE RULES</b>	<b>6, 7</b>		
Servicing and Before Starting Starting			
During Operation	6		
Transporting	7		
Tractors with Cabs Before Dismounting Dismounting After an Upset			
<b>ENERGY CONSERVATION – FOLLOW THESE RECOMMENDATIONS</b>			
<b>INSTRUMENTS AND CONTROLS</b>	<b>to 1</b>		
Instrument Panel and Controls	9, 10		
Left and Right Console, and Hydraulic Seat Controls - Open Center Hydraulic System			
Left and Right Console, and Seat Controls - Pressure Flow Hydraulic System			
Seat Controls - Vertical Acting Seat Cab Interior Deluxe Cab Interior	13		
<b>BEFORE OPERATING YOUR TRACTOR</b>	<b>14</b>		
<b>OPERATING THE TRACTOR</b>	<b>14 to 24</b>		
Neutral Starting Switch			
Starting the Engine	14		
Stopping the Engine	16		
With the Engine Running	16		
Steering the Tractor	17		
Driving the Tractor (Gear Drive)	1		
Hydraulic Powered Clutch Control (Gear Drive)	18		
Stopping the Tractor (Gear Drive)	18		
Driving the Tractor (Hydrostatic Drive)	18		
Stopping the Tractor (Hydrostatic Drive)	19		
Speedometer - Tachometer	19		
Digital Tachometer - Speedometer	19		
		<b>CAB INTERIOR AND CONTROLS</b>	<b>4 28</b>
		Operating the Controls	24
		Control Settings	26
		Radio Units	26
		Seat	27
		<b>ENGINE AND FUEL SYSTEM</b>	<b>29 to 34</b>
		Warranty Notice	31
		Fuel System	31
		Fuel Injection Pump and Nozzles	33
		Priming the Turbocharger	34
		<b>COOLING SYSTEM</b>	<b>34 to 37</b>
		Coolants and Cooling System Conditioner	34
		Checking the Coolant Level	35
		Draining the Cooling System 786 Tractors and 886 Tractors w/D-358 Engine	35
		Draining the Cooling System 886 w/D-360 Engine, 986, 1086, 1486, 1586 and Hydro-186 Tractors	3
		Filling the Cooling System All Tractors	35
		Coolant System Filter Conditioner	36
		Hoses and Clamps	36
		Thermostat	36
		Cleaning the Radiator Transmission Oil Cooler, and Condenser Core Fins	36
		Water Pump, Alternator - Generator and Fan Belt Tension	36

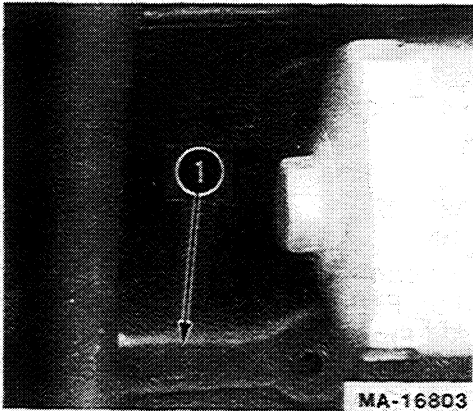
## CONTENTS

<b>AIR CLEANER SYSTEM</b>	<b>37 to 39</b>	Coupling the Equipment	57
Tractors with Automatic Dust Unloader	37	Example of Operating the Three-Point Hitch with Draft Control	59
Tractors with Aspirated Air Cleaner	37	Uncoupling the Equipment	59
Removing and Cleaning the Primary Filter Element	38	<b>HITCHING TRAILING EQUIPMENT TO THE TRACTOR</b>	<b>60,61,62</b>
Inspection	39	Swinging Drawbar for Tractors Without Three-Point Hitch	61
Secondary Filter Element	39	Swinging Drawbar for Tractors With Three-Point Hitch	62
<b>ELECTRICAL SYSTEM</b>	<b>40 to 44</b>	<b>AUXILIARY VALVES, REMOTE CYLINDERS AND HYDRAULIC OUTLETS - OPEN CENTER HYDRAULIC SYSTEM</b>	<b>63 to 66</b>
Charging System for Alternator - Generator	41	Connecting Hoses to the Rear Hydraulic Outlets	63
Cranking System	41	Check Valves	64
Lighting System	41	Operating Double Acting Cylinders	64
Lights	41	Operating Single Acting Cylinders	65
Instrument Light Dimmer Switch	42	Neutral Lock	65
Turn Signal Indicators	42	Float Lockout	65
Electrical Connector	42	Adding Fluid After Connection	
Combination Turn Signals and Warning Lights	43	Cylinders and Hoses	65
Tellites	43	Freeing the System of Trapped Air	65
Fuse	43	Sequential Raise	66
Batteries	43	Simultaneous Raise	66
<b>HYDRAULIC CONTROLS FOR THREE-POINT HITCH - OPEN CENTER HYDRAULIC SYSTEM</b>	<b>45,46,47</b>	<b>AUXILIARY VALVES, REMOTE CYLINDERS AND HYDRAULIC OUTLETS-PRESSURE FLOW HYDRAULIC SYSTEM</b>	<b>67 to 71</b>
Position Control	45	Flow Control Lever	67
Position Control Lock Lever	45	Color Code	67
Draft Control	47	Motor Valve	68
Run Range	48	Hydraulic Motor Operation using the Motor Valve	68
<b>HYDRAULIC CONTROLS FOR THREE-POINT HITCH-PRESSURE FLOW HYDRAULIC SYSTEM</b>	<b>48 to 52</b>	Connecting Hoses to the Rear Outlets	69
Position Control	48	Check Valves	70
Position Control Lock Lever	48	Operating Double Acting Cylinders	70
Draft Control	49	Operating Single Acting Cylinders	70
Run Range	50	Neutral Lock	70
Raise Rate	50	Float Lockout	70
Hitch Drop Rate Adjustment	51	Adding Fluid After Connecting	
<b>THREE-POINT HITCH</b>	<b>52 to 59</b>	Cylinders and Hoses	71
Hitch Category Chart	52	Freeing the System of Trapped Air	71
Lift Links and Turnbuckles	53	Simultaneous Raise	71
Hitch Lower Links	53		
Hitch Upper Link	53		
Lateral Limiter	54		
Lateral Limiter Adjusting Procedure	54		
Sway Limiter Blocks	55		
Lateral Limiter	55		

## CONTENTS

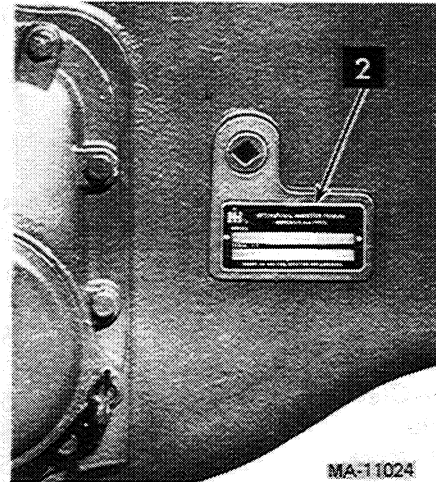
<p><b>POWER TAKE OFF</b> <span style="float: right;"><b>72,73, 74</b></span></p> <p style="padding-left: 20px;">Operating the Independent Power Take-Off <span style="float: right;">72</span></p> <p><b>ALL-WHEEL DRIVE</b> <span style="float: right;"><b>74</b></span></p> <p><b>DIFFERENTIAL LOCK</b> <span style="float: right;"><b>75</b></span></p> <p><b>FRONT WHEELS</b> <span style="float: right;"><b>75 to 78</b></span></p> <p style="padding-left: 20px;">Adjustable Wide Tread Front Axle <span style="float: right;">75</span></p> <p style="padding-left: 20px;">Farmall Hi-Clear Adjustable Front Axle <span style="float: right;">75</span></p> <p style="padding-left: 20px;">All-Wheel Drive <span style="float: right;">76</span></p> <p style="padding-left: 20px;">Tricycle Front Axle <span style="float: right;">76</span></p> <p style="padding-left: 20px;">Adjusting Wide-Tread Front Axle for Tread Widths <span style="float: right;">76</span></p> <p style="padding-left: 20px;">Adjusting the Toe-In <span style="float: right;">77</span></p> <p><b>REAR WHEELS</b> <span style="float: right;"><b>79 to 91</b></span></p> <p style="padding-left: 20px;">Adjusting the Tread Widths <span style="float: right;">79</span></p> <p style="padding-left: 20px;">Assembling the Rear Wheel Double-Beaded Rims <span style="float: right;">79</span></p> <p style="padding-left: 20px;">Reversing the Rear Wheels <span style="float: right;">79</span></p> <p style="padding-left: 20px;">Wheels with Fixed Rims <span style="float: right;">80</span></p> <p style="padding-left: 20px;">Wheels with Double-Beaded Rims <span style="float: right;">81</span></p> <p style="padding-left: 20px;">Wheels with Attached Clamp Rims <span style="float: right;">83</span></p> <p style="padding-left: 20px;">Tractors with Wedge Wheels <span style="float: right;">83</span></p> <p style="padding-left: 20px;">Wedge Wheels <span style="float: right;">87</span></p> <p style="padding-left: 20px;">Tractors with Hub Clamp Wheels <span style="float: right;">88</span></p> <p style="padding-left: 20px;">Dual Rear Wheels <span style="float: right;">88</span></p> <p><b>TIRES</b> <span style="float: right;"><b>92,93,94</b></span></p> <p style="padding-left: 20px;">Inflation <span style="float: right;">92</span></p> <p style="padding-left: 20px;">Front Tire Inflation Pressure <span style="float: right;">93</span></p> <p style="padding-left: 20px;">Rear Tire Inflation Pressure <span style="float: right;">94</span></p> <p><b>WEIGHTS</b> <span style="float: right;"><b>95 to 98</b></span></p> <p style="padding-left: 20px;">Front End Weights <span style="float: right;">95</span></p> <p style="padding-left: 20px;">Front End Weight Hold Down and Locking Device <span style="float: right;">95</span></p> <p style="padding-left: 20px;">Weight Table <span style="float: right;">97</span></p> <p style="padding-left: 20px;">All-Wheel Drive Tractors <span style="float: right;">98</span></p> <p style="padding-left: 20px;">Rear Wheel Weights (Two Piece) <span style="float: right;">98</span></p> <p><b>COLD WEATHER PRECAUTIONS</b> <span style="float: right;"><b>98</b></span></p> <p style="padding-left: 20px;">Fuel System <span style="float: right;">98</span></p> <p style="padding-left: 20px;">Electrical <span style="float: right;">98</span></p> <p style="padding-left: 20px;">Lubrication <span style="float: right;">98</span></p> <p style="padding-left: 20px;">Cooling System <span style="float: right;">98</span></p>	<p><b>STORING THE TRACTOR</b> <span style="float: right;"><b>99</b></span></p> <p style="padding-left: 20px;">Storage <span style="float: right;">99</span></p> <p style="padding-left: 20px;">Removing From Storage <span style="float: right;">99</span></p> <p><b>LUBRICATION</b> <span style="float: right;"><b>100 to 102</b></span></p> <p style="padding-left: 20px;">Engine Oil <span style="float: right;">100</span></p> <p style="padding-left: 20px;">Gear Lubricant <span style="float: right;">100</span></p> <p style="padding-left: 20px;">Lubrication Fitting Grease <span style="float: right;">101</span></p> <p style="padding-left: 20px;">Engine Oil Filter <span style="float: right;">101</span></p> <p style="padding-left: 20px;">Hydraulic Fluid Filter <span style="float: right;">101</span></p> <p style="padding-left: 20px;">Hydrostatic Drive Housing Hydraulic Fluid Filter <span style="float: right;">102</span></p> <p style="padding-left: 20px;">Lubricating the Front Wheels <span style="float: right;">102</span></p> <p><b>LUBRICATION TABLE</b> <span style="float: right;"><b>3, 104</b></span></p> <p><b>LUBRICATION GUIDE</b> <span style="float: right;"><b>105 1</b></span></p> <p><b>PREVENTIVE MAINTENANCE GUIDE</b> <span style="float: right;"><b>112 to 114</b></span></p> <p><b>CAB EQUIPMENT PREVENTIVE MAINTENANCE</b> <span style="float: right;"><b>115 to 119</b></span></p> <p style="padding-left: 20px;">Outside Air Filter <span style="float: right;">115</span></p> <p style="padding-left: 20px;">Recirculation Air Filter <span style="float: right;">115</span></p> <p style="padding-left: 20px;">Air Conditioner Condenser <span style="float: right;">116</span></p> <p style="padding-left: 20px;">Refrigerant Sight Glass <span style="float: right;">116</span></p> <p style="padding-left: 20px;">Refrigerant System Pressures <span style="float: right;">116</span></p> <p style="padding-left: 20px;">Evaporator Drain Valves <span style="float: right;">117</span></p> <p style="padding-left: 20px;">Adjusting the Compressor Belt Tension -886 Tractors <span style="float: right;">117</span></p> <p style="padding-left: 20px;">Adjusting the Compressor Belt Tension -886, 986, 1086, 1486, 1586 and Hydro-186 Tractors <span style="float: right;">118</span></p> <p style="padding-left: 20px;">Compressor Pulley and Clutch <span style="float: right;">118</span></p> <p style="padding-left: 20px;">Compressor Shaft Seal <span style="float: right;">118</span></p> <p style="padding-left: 20px;">Compressor Oil Level <span style="float: right;">118</span></p> <p style="padding-left: 20px;">Heater Coolant Shut-Off <span style="float: right;">119</span></p> <p style="padding-left: 20px;">Electrical <span style="float: right;">119</span></p> <p style="padding-left: 20px;">Miscellaneous <span style="float: right;">119</span></p> <p><b>SPECIFICATIONS</b> <span style="float: right;"><b>120 to 126</b></span></p> <p><b>OPTIONAL EQUIPMENT</b> <span style="float: right;"><b>127</b></span></p> <p><b>METRIC (SI) MEASUREMENTS</b> <span style="float: right;"><b>Inside Back Cover</b></span></p>
---	---

# SERIAL NUMBERS



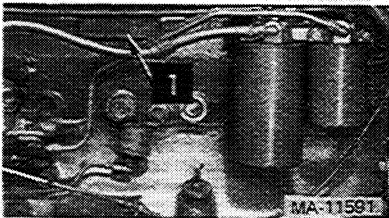
MA-16803

**Right side of engine crankcase.  
786 Tractors and 886 Tractors  
with D-358 engine.**



MA-11024

**Right side of rear frame  
2 — Tractor serial number**



MA-11591

**Left side of engine crankcase.  
886 Tractors with D-360 Engine  
and 986, 1086, 1486, 1586  
and Hydro 186 Tractors**

**1 — Engine serial number  
886 Tractor D-360**

---

**986 Tractor D-436**

---

**1086 Tractor DT-414**

---

**1486 Tractor DT-436**

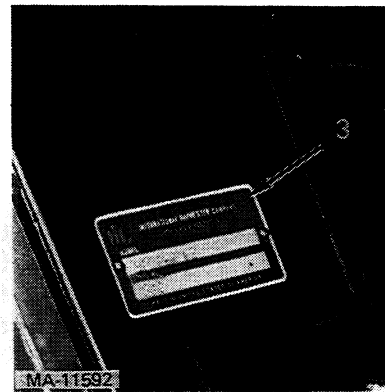
---

**1586 Tractor DT-436**

---

**Hydro 186 Tractor Tractor D-436**

---



MA-11592

**Right side of cab or rops.  
3 — Cab/ROPS model  
and serial number**

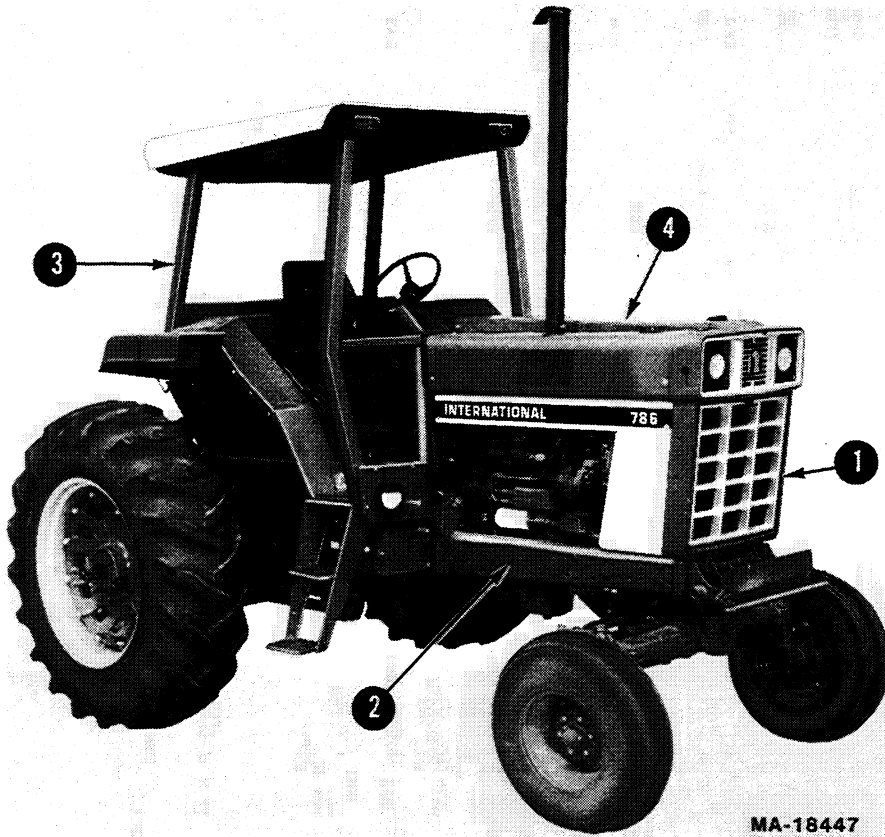


## CAUTION

Read the Operator's Manual.  
Learn to operate this machine SAFELY.  
Be alert. Observe ALL Safety Practices.  
Machines can be hazardous in the hands of an  
UNFAMILIAR, UNTRAINED or COMPLACENT  
operator.  
Don't risk INJURY or DEATH.

MA-10034

# TERMS OF LOCATION



**786 Tractor**

**1 - Front 2 - Right 3 - Rear 4 - Left**



**886 Tractor shown.  
986, 1086, 1486, 1586  
and Hydro 186 Tractors  
are similar.**

**1-Front 2-Right 3-Rear 4-Left**



**Buy Now**



Our support email:

[ebooklibonline@outlook.com](mailto:ebooklibonline@outlook.com)