

**5088, 5288 & 5488
Tractors**

Operators Manual

1258512C8

Reprinted

CASE III



This symbol means ATTENTION! BECOME ALERT! YOUR SAFETY IS INVOLVED. The message that follows the symbol contains important information about your safety. Carefully read the message. Make sure you fully understand the causes of possible injury or death.

SB001

IF THIS MACHINE IS USED BY AN EMPLOYEE, IS LOANED, OR IS RENTED, MAKE SURE THAT THE OPERATOR UNDERSTANDS THE TWO INSTRUCTIONS BELOW.

BEFORE THE OPERATOR STARTS THE ENGINE:

1. GIVE INSTRUCTIONS TO THE OPERATOR ON SAFE AND CORRECT USE OF THE MACHINE.
2. MAKE SURE THE OPERATOR READS AND UNDERSTANDS THE OPERATOR'S MANUAL FOR THIS MACHINE.



IMPROPER OPERATION OF THIS MACHINE CAN CAUSE INJURY OR DEATH.

BEFORE STARTING THE ENGINE, DO THE FOLLOWING:

1. READ THE OPERATOR'S MANUAL.
2. READ ALL SAFETY DECALS ON THE MACHINE.
3. CLEAR THE AREA OF OTHER PERSONS.

LEARN AND PRACTICE SAFE USE OF MACHINE CONTROLS IN A SAFE, CLEAR AREA BEFORE YOU OPERATE THIS MACHINE ON A JOB SITE.

It is your responsibility to observe pertinent laws and regulations and to follow manufacturer's instructions on machine operation and maintenance.

See your Authorized Case dealer for additional operator's manuals, parts catalogs, and service manuals.

To The Owner

Be sure this operators manual is kept with the machine at all times, regardless of ownership.

Before you operate the tractor, study this manual carefully. It has been prepared to help you operate and maintain your tractor with utmost efficiency.



This symbol is used to call your attention to instructions concerning your personal safety. Be sure to observe and follow these instructions.

Assembled in this manual are operation, lubrication and maintenance instructions for the International 5088, 5288 and 5488 tractors. This material has been prepared in detail in the hope that it will help you to better understand the correct care and efficient operation of your new tractor.

For prompt, efficient service, always specify the tractor model and serial numbers, including prefix and suffix letters. Write these serial numbers in the spaces provided under "Serial Numbers".

Your new International Harvester tractor is designed to meet today's exacting operating requirement. The ease and comfort of operation, the ability to match ground speeds to engine power and work requirement, and the effortless versatility of the hydraulic system are intended to lighten your work and shorten your hours on the job.

Your local International Harvester dealer is interested in the performance you receive from these tractors. He has factory-trained servicemen, informed in the latest method of servicing tractors, modern tools, and original-equipment IH service parts which assure proper fit and good performance.

To obtain top performance and assure economical operation, the tractor should be inspected, depending on its use, periodically, or at least once a year by your International Harvester Dealer.



Universal symbols are used to pictorially identify various tractor instruments and controls. Throughout this manual, an identifying symbol is placed by the instructions like this example for engine coolant temperature. The waves signify water or coolant and the thermometer indicates temperature. Regardless of the language used in a nation, and without translation, this symbol means water or coolant temperature.

Optional equipment and accessories are available. Disregard the instructions for equipment not on your tractor.

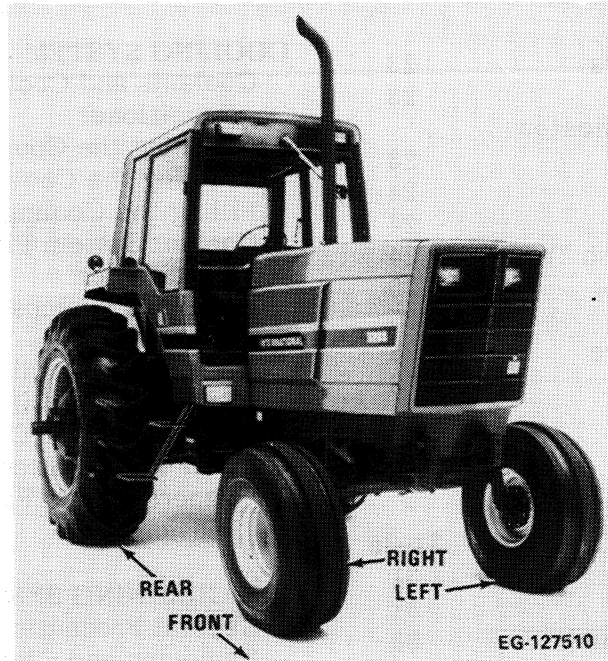


CAUTION: Some photographs in this manual may show shields or cover panels removed for purposes of clarity. NEVER OPERATE Unit without all shields and cover panels in place.

METRIC (SI) MEASUREMENTS

A standard of metric measurement known as International System of Units (SI) has been adopted for worldwide use. English Units and Metric Units are used throughout this manual. (Equivalentents are given in parenthesis.)





5288 With Optional Equipment

CONTENTS

TO THE OWNER	Inside Front Cover	INSTRUMENTS AND CONTROLS	17-30
		Instrument Panel	17
		Seat	18
SERIAL NUMBERS	5	Power Take Off, Hitch, Hydraulic Valves and Transmission Controls	19
WORK SAFELY — FOLLOW THESE RULLES	6-9	Park Lock Lever	19
Servicing and Before Starting	6	All-Wheel Drive	19
Starting	7	Gauge and Tellite Cluster	20
During Operation	7	Turn Signal Indicator	20
Transporting	7	Engine Oil Pressure Gauge	20
Tractors with Control Centers	8	Coolant Temperature Gauge	20
Before Dismounting	8	Fuel Gauge	20
Dismounting	8	Voltmeter	21
After an Upset	8	Tellitres	21
Product Graphics	9	Brake Wear Tellite	21
INCH-METRIC HARDWARE	10	Transmission Oil Tellite	21
HARDWARE TORQUE DATA	11-15	Transmission Sentry Tellite	21
ENERGY CONSERVATION FOLLOW THESE RECOMMENDATIONS	16	Air Cleaner Service Tellite	21
		Control Center	22
		Blower Control	22
		Air Conditioner Control	22
		Heater Control	22
		Air Recirculation Control	22

CONTENTS

Air Flow Control Louvers	23	COOLING SYSTEM	41-44
Defroster	23	Coolants and Coolant System	
Refrigerant Pressure Indicator		Conditioner	41
Light	23	Checking the Coolant Level	41
Dome Light	24	Draining the Cooling System	43
Radio	24	Filling the Cooling System	43
Cigarette Lighter and Ash Tray	24	Coolant System Filter	
Windshield Wiper Control	25	Conditioner	43
Data Center	25	Hoses and Clamps	43
Exhaust Gas Temperature	28	Thermostat	43
Seat Adjustments	28	Cleaning the Radiator,	
		Transmission Oil Cooler	
BEFORE OPERATING		and Condenser Core Fins	43
YOUR TRACTOR	31	Water Pump, Alternator-	
		Generator and Fan Belt	
OPERATING THE TRACTOR	31-35	Tension	44
Neutral Starting Switches	31	AIR CLEANING SYSTEM	45-47
Starting the Engine	31	General Precautions	45
Tractor Break-In Procedure	33	Removing and Cleaning the	
With the Engine Running	33	Primary Filter Element	45
Stopping the Engine	33	Inspection	46
Steering the Tractor	33	Removing the Secondary	
Driving the Tractor	33	Element	46
Selecting Ground Speed	34	ELECTRICAL SYSTEM	48-53
Stopping the Tractor	34	Fuses	48
Park	34	Instrument Light Dimmer	
Towing the Tractor	35	Switch	49
ENGINE AND FUEL SYSTEM	36-40	Turn Signal Indicators	49
Engine Access Panels	37	Charging System for	
Warranty Notice	38	Alternator-Generator	49
Fuel System	38	Cranking System	49
Fuel Filters	39	Lighting System	49
Fuel Injection Pump		Lights	49
and Nozzles	39	Combination Turn Signals	
Priming the Turbocharger	40	and Warning Lights	50
		Tellites	50
		Batteries	51
		Electrical Connector	52
		Implement Auxiliary Wire	53

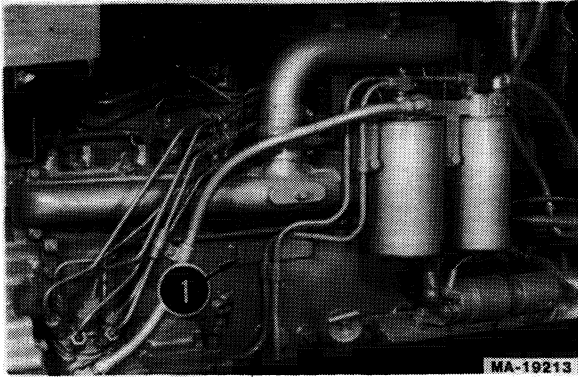
CONTENTS

HYDRAULIC CONTROLS FOR THREE POINT HITCH	54-56	Check Valves	81
Position Control	54	Operating Double-Acting Cylinders	81
Position Control Lock Lever	54	Operating Single-Acting Cylinders	81
Adjustable Stop	55	Neutral Lock	81
Draft Control	55	Float Lockout	81
Run Range	56	Adding Fluid After Connecting Cylinders and Hoses	81
Raise Rate Control	56	Freeing the System of Trapped Air	82
Hitch Drop Rate Adjustment	56	Simultaneous Raise	82
THREE-POINT HITCH	57-66	Valve Detents and Unlatching	82
Hitch Upper Link	58	Continuous or Long Term Hydraulic Application	82
Telescoping Lower Links	58	POWER TAKE-OFF	83-85
Claw Lower Links	58	Operating the Independent Power Take-Off	85
Lift Links and Turnbuckles	59	DIFFERENTIAL LOCK	86
Lateral Limiter	60	FRONT WHEELS	87-90
Coupling the Equipment	63	-Adjustable Standard	
Uncoupling the Equipment	66	Front Axle	87
OPERATING THE THREE-POINT HITCH WITH DRAFT CONTROL	67	Adjusting the Front Axle	88
HITCHING TRAILING EQUIPMENT TO THE TRACTOR	68-74	Adjusting the Toe-In	88
Safety Chain	68	-Adjustable High Capacity	
Swinging Drawbar for Tractors With Three-Point Hitch	69	Front Axle	89
Swinging Drawbar for Tractors Without Three-Point Hitch	73	Adjusting the Front Axle	89
AUXILIARY VALVES, REMOTE CYLINDERS AND HYDRUALIC OUTLETS	75-82	Adjusting the Toe-In	90
Flow Control Lever	75	ALL WHEEL DRIVE	91-99
Color Code	75	Tire Size Combinations	92
Couplers	77	Adjusting Toe-In	93
Motor Valve	78	Tread Width	94
Hydraulic Motor Operation		Steering Stops	94
Using the Motor Valve	78	Oscillation Stops	97
Connecting Hoses to the Rear Hydraulic Outlets	78	Fender Adjustments	97
		Tread Chart	99

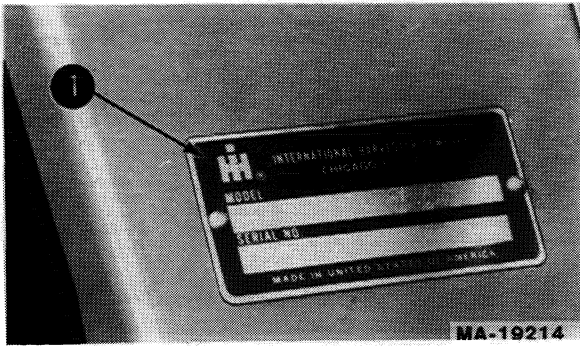
CONTENTS

REAR WHEELS	100-106	LUBRICATION	117-120
Adjusting the Tread Widths	100	Engine Oil	117
Reversing the Rear Wheels	100	Gear Lubricant	117
Assembling the Rear Wheel with Double-Beaded Rims	100	Hydraulic Fluid Filters	118
Wheels with Double Beaded Rims	101	Lubrication Fitting Grease	120
Single Wheel Treads	101	Engine Oil Filter	120
Wheels with Attached Clamp Rims	102	Lubricating the Front Wheels and Adjustable Front Axles	121
Wedge Lock Wheels	102	Miscellaneous Lubrication	121
Dual Wheels	104	LUBRICATION TABLE	121-122
Wedge Lock Hub	104	LUBRICATION GUIDE	123-131
Clamp Type Hub	104	PREVENTIVE MAINTENANCE GUIDE	132-134
Hub and Wheel Positions for Duals	105	CONTROL CENTER PREVENTIVE MAINTENANCE	135-138
Mean Tread Limits	106	Outside Air Filter	135
Dual Wheel Treads	106	Recirculation Air Filter	135
TIRES	107-110	Air Conditioner Condenser	136
Inflation	107	Air Conditioner System Pressures	136
Front Tire Inflation Pressures	108	Evaporator Drain Valves	136
Rear Tire Inflation Pressure	109	Adjusting the Compressor Belt Tension-Reciprocating Piston or Rotary Vane Compressor	136
BALLASTING THE TRACTOR	111-115	Compressor Pulley and Clutch -Reciprocating Piston Compressor-	137
Front Ballasting	112	Compressor Pulley and Clutch -Rotary Vane Compressor	137
Additional-All Wheel Drive	112	Compressor Shaft Seal	137
Liquid Ballast	113	Compressor Oil Level	137
Weight Table	113	Heater Coolant Shut-Off	137
Front-end Weights	114	Electrical	137
Rear Wheel Weights	115	Miscellaneous	138
COLD WEATHER PRECAUTIONS	116	SPECIFICATIONS	139-144
Fuel System	116	FRONT CHEMICAL TANKS	145
Electrical	116	OPTIONAL EQUIPMENT	146
Lubrication	116		
Cooling System	116		
STORING THE TRACTOR	116		
Storage	116		
Removing From Storage	116		

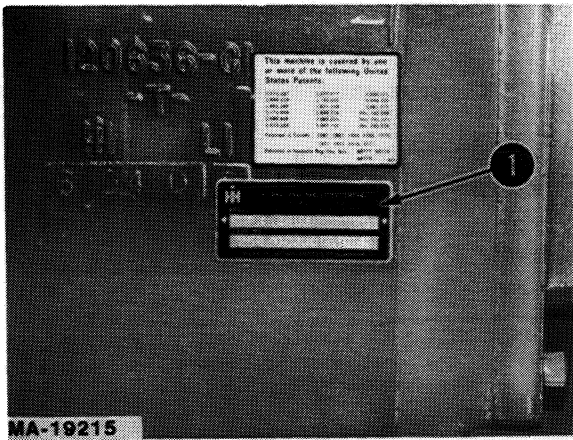
SERIAL NUMBERS




1 - Engine (Left side of crankcase)



1 - Control Center or ROPS (Right side)



1 - Chassis (Right side of transmission housing)

 **CAUTION**

Read the Operator's Manual.
Learn to operate this machine SAFELY.
Be alert. Observe ALL Safety Practices.
Machines can be hazardous in the hands of an UNFAMILIAR, UNTRAINED or COMPLACENT operator.
Don't risk INJURY or DEATH.

MA-10634

Buy Now



Our support email:

ebooklibonline@outlook.com