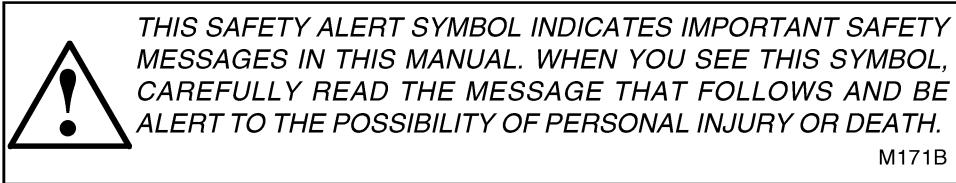


7288/7488 Tractors

Operators Manual

1258547C2








If Safety Decals on this machine use the words **Danger, Warning or Caution**, which are defined as follows:

- **DANGER:** Indicates an immediate hazardous situation which if not avoided, will result in death or serious injury. The color associated with Danger is RED.
- **WARNING:** Indicates a potentially hazardous situation which if not avoided, will result in serious injury. The color associated with Warning is ORANGE.
- **CAUTION:** Indicates a potentially hazardous situation which if not avoided, may result in minor or moderate injury. It may also be used to alert against unsafe practices. The color associated with Caution is YELLOW.

If Safety Decals on this machine are ISO two panel Pictorial, decals are defined as follows:

- The first panel indicates the nature of the hazard.
- The second panel indicates the appropriate avoidance of the hazard.
- Background color is YELLOW.
- Prohibition symbols such as   and  if used, are RED.



WARNING

IMPROPER OPERATION OF THIS MACHINE CAN CAUSE INJURY OR DEATH. BEFORE USING THIS MACHINE, MAKE CERTAIN THAT EVERY OPERATOR:


- Is instructed in safe and proper use of the machine.
- Reads and understands the Manual(s) pertaining to the machine.
- Reads and understands ALL Safety Decals on the machine.
- Clears the area of other persons.
- Learns and practices safe use of machine controls in a safe, clear area before operating this machine on a job site.

It is your responsibility to observe pertinent laws and regulations and follow Case Corporation instructions on machine operation and maintenance.

TO THE OWNER

BE SURE THIS OPERATOR'S MANUAL IS KEPT WITH THIS MACHINE AT ALL TIMES, REGARDLESS OF OWNERSHIP.


Before you operate the tractor study this manual carefully. It has been prepared to help you operate and maintain your tractor with utmost efficiency.

 This symbol is used to call your attention to instructions concerning your personal safety. Be sure to observe and follow these instructions.

Assembled in this manual are operation, lubrication and maintenance instructions for the International 7288 and 7488 tractors. This material has been prepared in detail in the hope that it will help you to better understand the correct care and efficient operation of your new tractor.

For prompt, efficient service, always specify the tractor model and serial numbers, including prefix and suffix letters. Write these serial numbers in the spaces provided under "Serial Numbers".

The International 7288 and 7488 four-wheel drive tractors are designed to distribute the tractor weight on the four driving wheels during operation, and thus provide better floatation and less soil compaction.

 **CAUTION:** Some photographs in this manual may show shields or cover panels removed for purposes of clarity. NEVER OPERATE Unit without all shields and cover panels in place.

METRIC (SI) MEASUREMENTS

A standard of metric measurement known as International System of Units (SI) has been adopted for worldwide use. English Units and Metric Units are used throughout this manual. (Equivalents are given in parenthesis.)

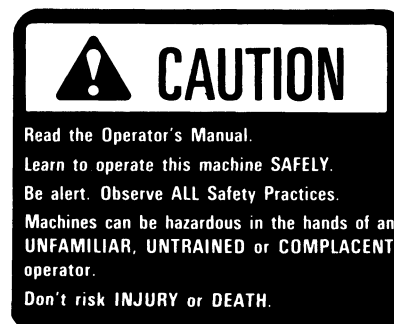
Your local International Harvester dealer is interested in the performance you receive from these tractors. He has factory-trained servicemen, informed in the latest method of servicing tractors, modern tools, and original-equipment IH service parts which assure proper fit and good performance.

To obtain top performance and assure economical operation the tractor should be inspected, depending on its use, periodically, or at least once a year by your International Harvester Dealer.

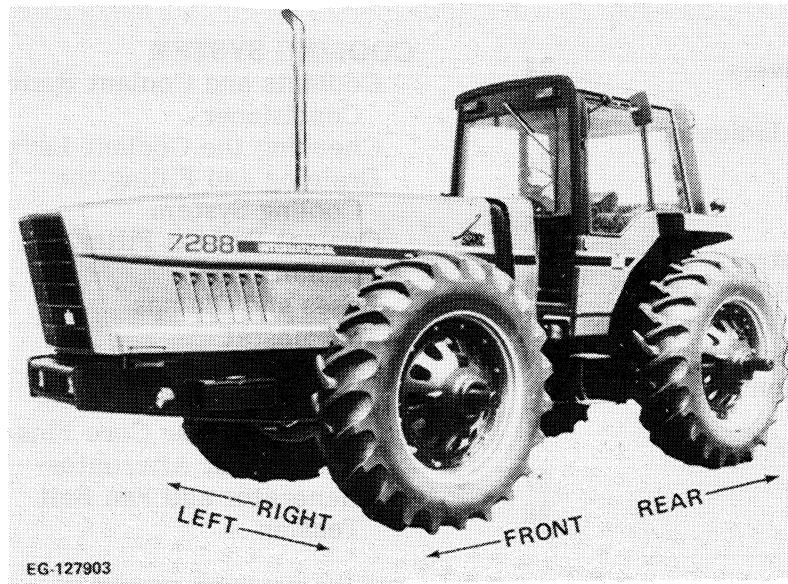


Universal symbols are used to pictorially identify various tractor instruments and controls. Throughout this manual, an identifying symbol is placed by the instructions like this example for engine coolant temperature. The waves signify water or coolant and the thermometer indicates temperature. Regardless of the language used in a nation, and without translation, this symbol means water or coolant temperature.

Optional equipment and accessories are available. Disregard the instructions for equipment not on your tractor.



MA-10034



7288 with optional equipment

CONTENTS

TO THE OWNER	Inside Front Cover	INSTRUMENTS AND CONTROLS	18-28
		Instrument Panel and Controls	18
		Right Console Controls	19
		Park Lever	20
		Hydraulic Seat	20
		Transmission and Hydraulic	
		Oil Filter Warning Light	20
		Gauge and Tellite Cluster	21
		Turn Signal Indicator	21
		Engine Oil Pressure Gauge	21
		Coolant Temperature Gauge	21
		Fuel Gauge	21
		Voltmeter	22
		Tellites	22
		Transmission Oil Pressure	
		Tellite	22
		Transmission Sentry Tellite	22
		Air Cleaner Service Tellite	22
		Control Center	23
		Right Console Light	23
		Blower Control	23
		Air Conditioner Control	23
		Heater Control	23
		Air Recirculation Control	23
SERIAL NUMBERS	5		
WORK SAFELY — FOLLOW THESE RULLES	6-10		
Servicing and Before Starting	6		
Starting	7		
During Operation	7		
Transporting	8		
Control Center	8		
Before Dismounting	8		
Dismounting	9		
After an Upset	9		
Product Graphics	9		
INCH-METRIC HARDWARE	11		
HARDWARE TORQUE DATA	12-16		
ENERGY CONSERVATION FOLLOW THESE RECOMMENDATIONS	17		

CONTENTS

Air Flow Control Louvers	24	COOLING SYSTEM	40-42
Defroster	24	Coolants and Coolant System	
Refrigerant Pressure Indicator		Conditioner	40
Light	24	Checking the Coolant Level	40
Dome Light	25	Draining and Filling the	
Radio Units	25	Cooling System	41
Windshield Wiper Control	25	Coolant System Filter	
Cigarette Lighter and Ash Tray	25	Conditioner	41
Data Center	26	Hoses and Clamps	41
Data Center Operation	26	Thermostat	42
Description of Function Pads,		Cleaning the Radiator,	
Lights and Display	27	Transmission Oil Cooler	
Problems and Data Center		and Condenser Core Fins	42
Reaction	27	Water Pump, Alternator-	
Seat Adjustments	28	Generator and Fan Belt	
		Tension	42
BEFORE OPERATING		AIR CLEANING SYSTEM	43-44
YOUR TRACTOR	29	General Precautions	43
		Removing and Cleaning the	
OPERATING THE TRACTOR	29-35	Primary Filter Element	43
Neutral Starting Switch	29	Inspection	44
Starting the Engine	29	Secondary Filter Element	44
Tractor Break-In Procedure	31	ELECTRICAL SYSTEM	45-52
With the Engine Running	31	General	45
Stopping the Engine	31	Circuit Breakers	45
Steering the Tractor	32	Fuses	46
Driving the Tractor	33	Instrument Light Dimmer	
Selecting Ground Speed	33	Switch	47
Stopping the Tractor	33	Rocker Switches	47
Park	34	Turn Signal Indicators	47
Hood Release and Removal	34	Charging System for	
Frame Lock Pin	35	Alternator-Generator	47
Auxiliary Step	35	Cranking System	47
Tool Box	35	Lighting System	47
Towing the Tractor	35	Lights	48
ENGINE AND FUEL SYSTEM	36-39	Combination Turn Signals	
Warranty Notice	37	and Warning Lights	48
Fuel System	37	Tellites	48
Fuel Injection Pump		High Current Fuses	49
and Nozzles	39	Batteries	50
Priming the Turbocharger	39	Electrical Connector	51
		Implement Auxiliary Wire	52

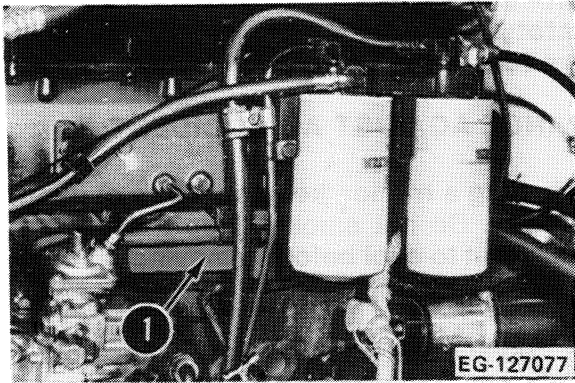
CONTENTS

HYDRAULIC CONTROLS FOR THREE POINT HITCH	53-55	Check Valves	72
Position Control	53	Operating Double-Acting Cylinders	72
Position Control Lock Lever	53	Operating Single-Acting Cylinders	73
Adjustable Stop	54	Neutral Lock	73
Draft Control	54	Float Lockout	73
Run Range	55	Adding Fluid After Connecting Cylinders and Hoses	73
Raise Rate Control	55	Freeing the System of Trapped Air	74
Hitch Drop Rate Adjustment	55	Simultaneous Raise	74
THREE-POINT HITCH	56-61	Valve Detents and Unlatching	74
Hitch Upper Link	56	Continuous or Long Term Hydraulic Application	74
Lift Links and Turnbuckles	57	POWER TAKE-OFF	75-76
Telescoping Lower Links	58	Operating the Independent Power Take-Off	76
Lateral Limiter	58	DIFFERENTIAL LOCK	77
Coupling the Equipment	59	WHEELS	78-90
Hitch Category Dimensions	59	Wedge Lock Wheels	78
Uncoupling the Equipment	61	Oscillation Stop Mounting	80
OPERATING THE THREE-POINT HITCH WITH DRAFT CONTROL	62	Articulation Angle	81
HITCH TRAILING EQUIPMENT TO THE TRACTOR	63-67	Maximum Front Wheel Tread	81
Safety Chain	63	Adjusting the Tread Widths	82
Swinging Drawbar for Tractors With Three-Point Hitch	64	Reversing the Wheels	82
Swinging Drawbar for Tractors Without Three-Point Hitch	67	Wheels with Attached Clamp Rims	82
AUXILIARY VALVES, REMOTE CYLINDERS AND HYDRAULIC OUTLETS	68-74	Assembling the Double-Beaded Rims Onto the Wheels	83
Flow Control Lever	68	Wheels with Double-Beaded Rims	83
Color Code	68	Single Wheel Treads	84
ISO Couplers	70	Dual Wheels	86
Motor Valve	70	Wedge Lock Hub	86
Hydraulic Motor Operation Using the Motor Valve	70	Mean Tread Limits	87
Connecting Hoses to the Hydraulic Couplers	71	Hub and Wheel Positions for Duals	88
Disconnection	72	Inner Dual Wheel Treads	89
		Outer Dual Wheel Treads	90

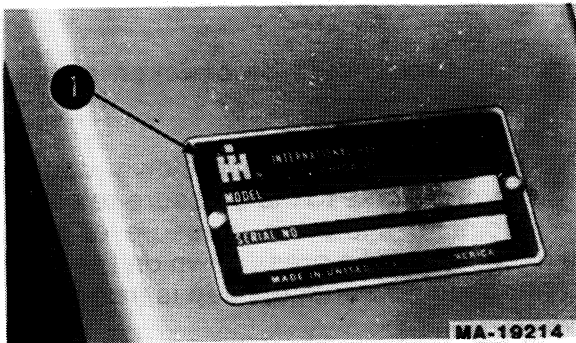
CONTENTS

TIRES	91-92	PREVENTIVE MAINTENANCE GUIDE	106-108
Inflation	91		
Front and Rear Tire Inflation Pressure	92	CONTROL CENTER EQUIPMENT	
BALLASTING THE TRACTOR	93-94	PREVENTIVE MAINTENANCE	109-112
Liquid Weight In Tractor Tires	94	Outside Air Filter	109
COLD WEATHER PRECAUTIONS	95	Recirculation Air Filter	109
Fuel System	95	Air Conditioner Condenser	110
Electrical	95	Air Conditioner System Pressures	110
Lubrication	95	Evaporator Drain Valves	110
Cooling System	95	Adjusting the Compressor Belt Tension	110
STORING THE TRACTOR	95	Compressor Pulley and Clutch	111
Storage	95	Compressor Shaft Seal	111
Removing From Storage	95	Compressor Oil Level	111
LUBRICATION	96-100	Heater Coolant Shut-Off	111
Engine Oil	96	Electrical	111
Gear Lubricant	96	Floodlights	112
Power Steering In-Line Screen	97	Miscellaneous	112
Hydraulic System Screen	98	SPECIFICATIONS	113-117
Hydraulic Fluid Filters	98	FRONT CHEMICAL TANKS	118
Lubrication Fitting Grease	100	OPTIONAL EQUIPMENT	119
Engine Oil Filter	100	METRIC (SI) MEASUREMENTS	Inside Back Cover
Miscellaneous Lubrication	100		
LUBRICATION TABLE	101		
LUBRICATION GUIDE	102-105		

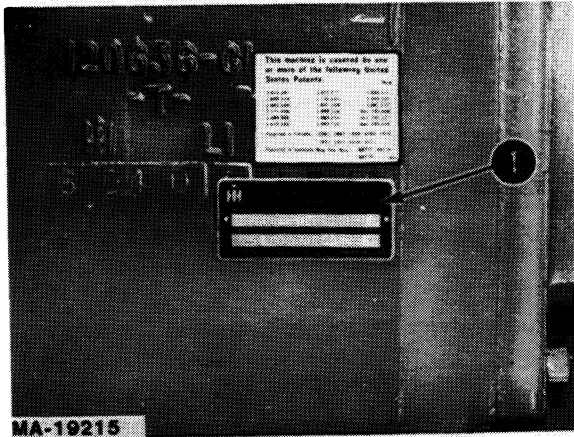
SERIAL NUMBERS



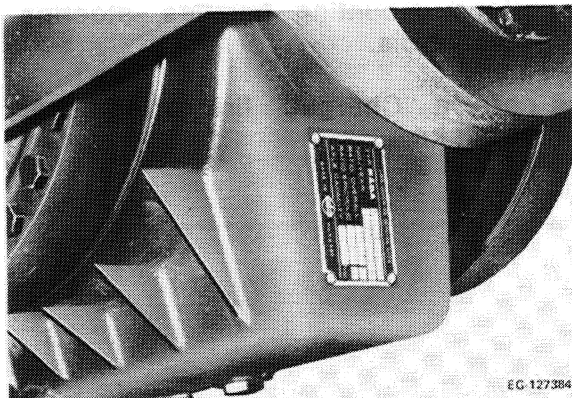
1 - Engine (Left side of crankcase)



1 - Control Center or ROPS (Right side)



1 - Chassis (Right side of transmission housing)



1 - Front axle (Rear side of axle)

Buy Now



Our support email:

ebooklibonline@outlook.com