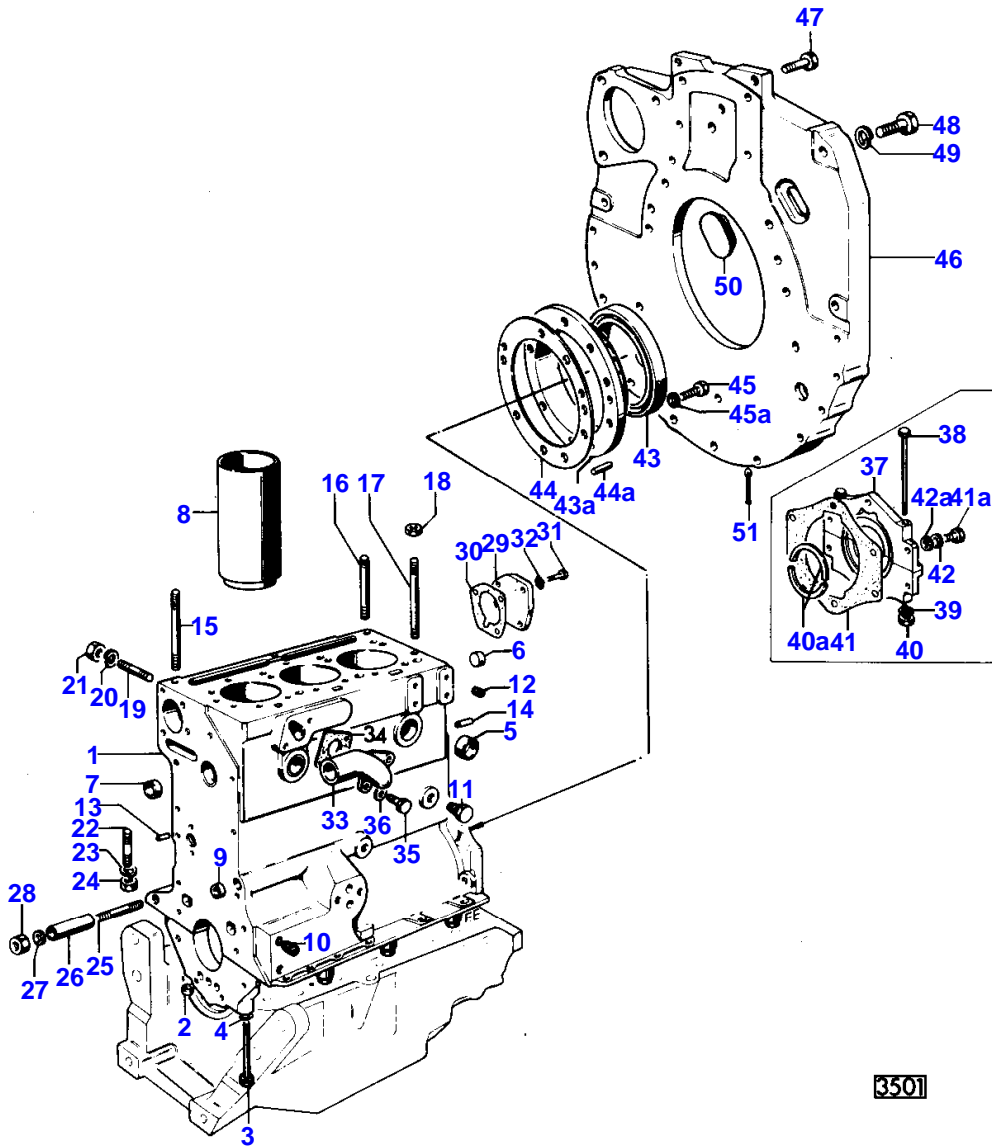


Page Title	Page Number
CYLINDER BLOCK - AD3.152	2
CRANKSHAFT AND FLYWHEEL - AD3.152	8
CYLINDER HEAD AND COVER - AD3.152	12
ROCKER ARM - AD3.152	16
TIMING GEAR - AD3.152	18
LUBRICATING OIL SYSTEM - AD3.152	24
WATER PUMP - AD3.152	30
FUEL INJECTION EQUIPMENT - AD3.152	34
FUEL LIFT PUMP - AD3.152	38
FUEL PIPINGS AND FUEL FILTER - AD3.152	40
GASKET SET - AD3.152	42
ELECTRICAL EQUIPMENT - ENGINE	44
COOLING SYSTEM	48
FUEL TANK - AD3.152	50
INDUCTION MANIFOLD - AD3.152	52
AIR FILTER - FISPA	54
AIR FILTER - LAUTRETTE	56
EXHAUST MANIFOLD AND MUFFLER - AD3.152	58
THROTTLE CONTROLS - AD3.152	60
CLUTCH ASSEMBLY	62
DUAL CLUTCH - LUK TYPE	66
DOUBLE CLUTCH CONTROL	68
CLUTCH SHAFT BRAKING SYSTEM	74
TRANSMISSION HOUSING - CENTRE AXLE HOUSING	76
SYNCHRO-MESH TRANSMISSION	78
CONTROLS AND TRANSMISSION SHIFT LEVERS	82
CENTER GEAR UNIT	84
POWER TAKE OFF	86
POWER TAKE-OFF 540/1000 R.P.M.	90
BELT PULLEY	94
REAR AXLE HOUSING	98
STEERING CLUTCH	102
BRAKES	106
FRONT SUSPENSION - REAR SUSPENSION	112
TRACK CARRIER	118
TRACK ROLLER	120
UPPER ROLLER	122
IDLER WHEEL	124
TRACK CHAIN	128
HYDRAULIC LIFT PUMP AND LINES	134
OIL PUMP - HYDRAULIC LIFT	138
HYDRAULIC VALVE - HYDRAULIC LIFT	140
HYDRAULIC LIFT	144
CONTROL QUADRANTS	150
AUXILIARY HYDRAULICS VALVE	156
AUXILIARY HYDRAULICS VALVE	160
AUXILIARY HYDRAULICS VALVE	162
LINKAGE - CAT 1	164
LINKAGE - CAT 2	168
SWINGING DRAWBAR	172
HITCH	176
MOUNTING FRAME AND FRONT WEIGHTS	178
HOOD	180
SEAT - FENDERS - PLATFORM	184
TRACK GEAR GUARDS	188
INSTRUMENTS	190
DECALS	192
FRONT AND REAR LIGHTING EQUIPMENT	194
TOOL GROUP	200

2

CYLINDER BLOCK
 BLOC MOTEUR
 KURBELGEHAEUSE
 BLOCCO CILINDRI
 BLOQUE DE CILINDROS

AD3.152
 AD3.152
 AD3.152
 AD3.152
 AD3.152



CYLINDER BLOCK - AD3.152

Item	Part Number	Qty	Description	Comments
				AD3.152
1	91049	1	Block	Up to Serial or Engine Number 152UA391043DL
	61442	1	Cylinder Block	From Serial or Engine Number 152UA391044DL
2	F0870001	8	Thimble	1
3	32181441	8	Screw	Up to Serial or Engine Number 152UA391043DL
				1
3	32181441	6	Screw	From Serial or Engine Number 152UA391044DL
				1
3	32181442	2	Screw	From Serial or Engine Number 152UA391044DL
				1
4	2415608	2	O Ring	From Serial or Engine Number 152UA391044DL
				1
5	0650563	4	Plug	1
6	0650664	1	Plug	1
7	0650710	1	Plug	1
8	31358383	3	Liner	1
9	0650566	2	Plug	
10	32114471	3	Plug	
11	32161114	1	Plug	
12	23114451	2	Plug	
13	0350005	1	Dowel	
14	0350016	2	Dowel	
15	32524131	3	Stud	Up to Serial or Engine Number 152UA431804DL
16	32524133	6	Stud	Up to Serial or Engine Number 152UA431804DL
17	32524133	9	Stud	Up to Serial or Engine Number 152UA431804DL
	32524132	2	Stud	From Serial or Engine Number 152UA431805DL
18	33221315	18	Nut	Up to Serial or Engine Number 152UA431804DL
	33221315	2	Nut	From Serial or Engine Number 152UA431804DL
19	0826201	2	Stud	
20	33114412	2	Washer	
21	33221115	2	Nut	
22	0826285	1	Stud	
23	0920053	1	Washer	
24	0576002	1	Nut	
25	737795M1	1	Stud	
26	33266125	1	Spacer	
27	33121417	X	Shim	Thickness 0,9 MM.
	33121416	X	Shim	Thickness 0,25 MM.
	0760050	X	Shim	Thickness 0,13 MM.
	33121415	X	Shim	Thickness 0,05 MM.
28	353427X1	1	Nut Unf	
29	36237125	1	Plate	
30	36862511	1	Joint	
31	0746253	3	Screw	
32	0920053	3	Washer	
33	0201045	1	Connection	
34	0490486	1	Joint	
35	0746255	2	Setscrew	
36	0920106	2	Washer	
37	41422034	1	Cover	(A)
38	0096243	2	Screw	(A)
39	0920053	2	Washer	(A)
40	0576002	2	Nut	(A)
40A	36883106	2	Seal	(A)
41	36817134	1	Joint	(A)
41A	0746354	6	Screw	(A)
42	0920299	6	Washer	(A)
42A	33114118	6	Shim	(A)
43	2415391	1	Seal	(B)
43A	37424611	1	Housing	(B)
44	33826111	1	Joint	(B)
44A	0350015	2	Dowel	(B)
45	0746255	9	Setscrew	(B)
45A	0920003	9	Washer	(B)
46	37147974	1	Plate	
47	0720798	2	Screw	
48	0746454	6	Setscrew	
49	0920054	6	Washer	
50	37813113	1	Plug	
51	0610045	1	Pin	

MASSEY FERGUSON

MF 154 C CRAWLER - 1423889

1423889

CYLINDER BLOCK - AD3.152

2

Item	Part Number	Qty	Description	Comments
				(A) Up to Serial or Engine Number 152UA391043DL
				(B) From Serial or Engine Number 152UA391044DL

8

CRANKSHAFT & FLYWHEEL

VILEBREQUIN ET VOLANT
 KURBELWELLE UND SCHWUNGRAD
 ALBERO MOTORE E VOLANO
 CIGUENAL Y VOLANTE

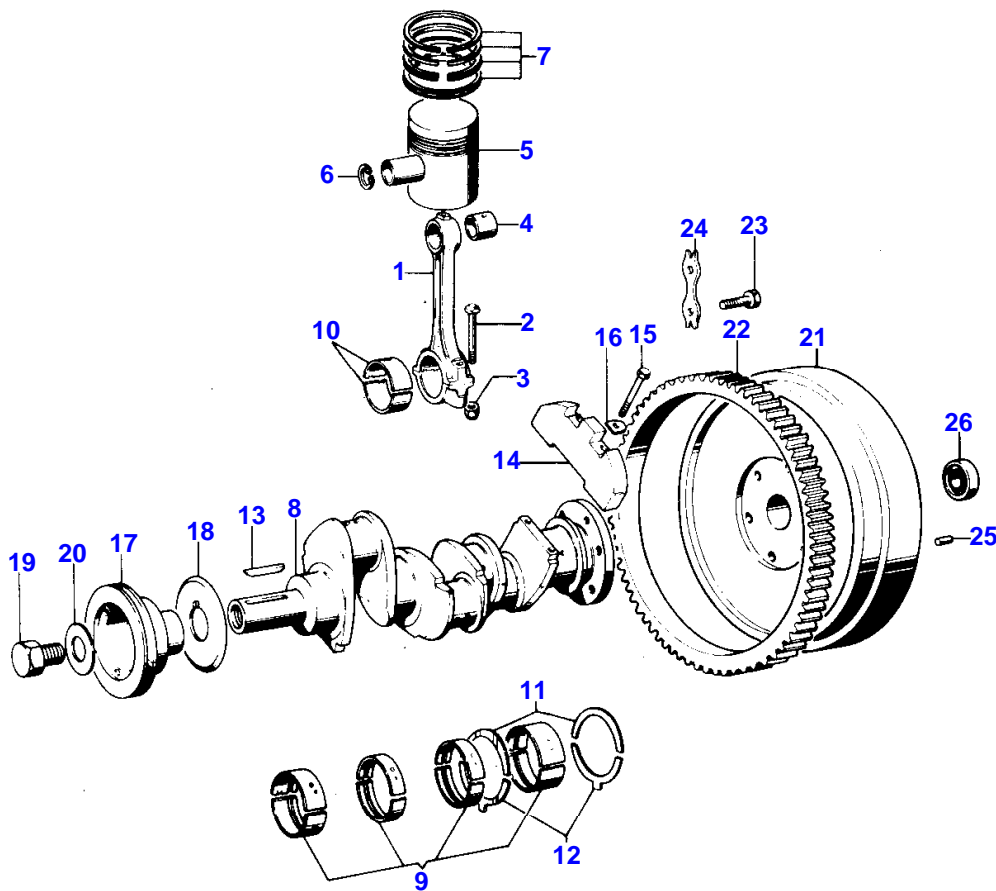
AD3.I52

AD3.I52

AD3.I52

AD3.I52

AD3.I52



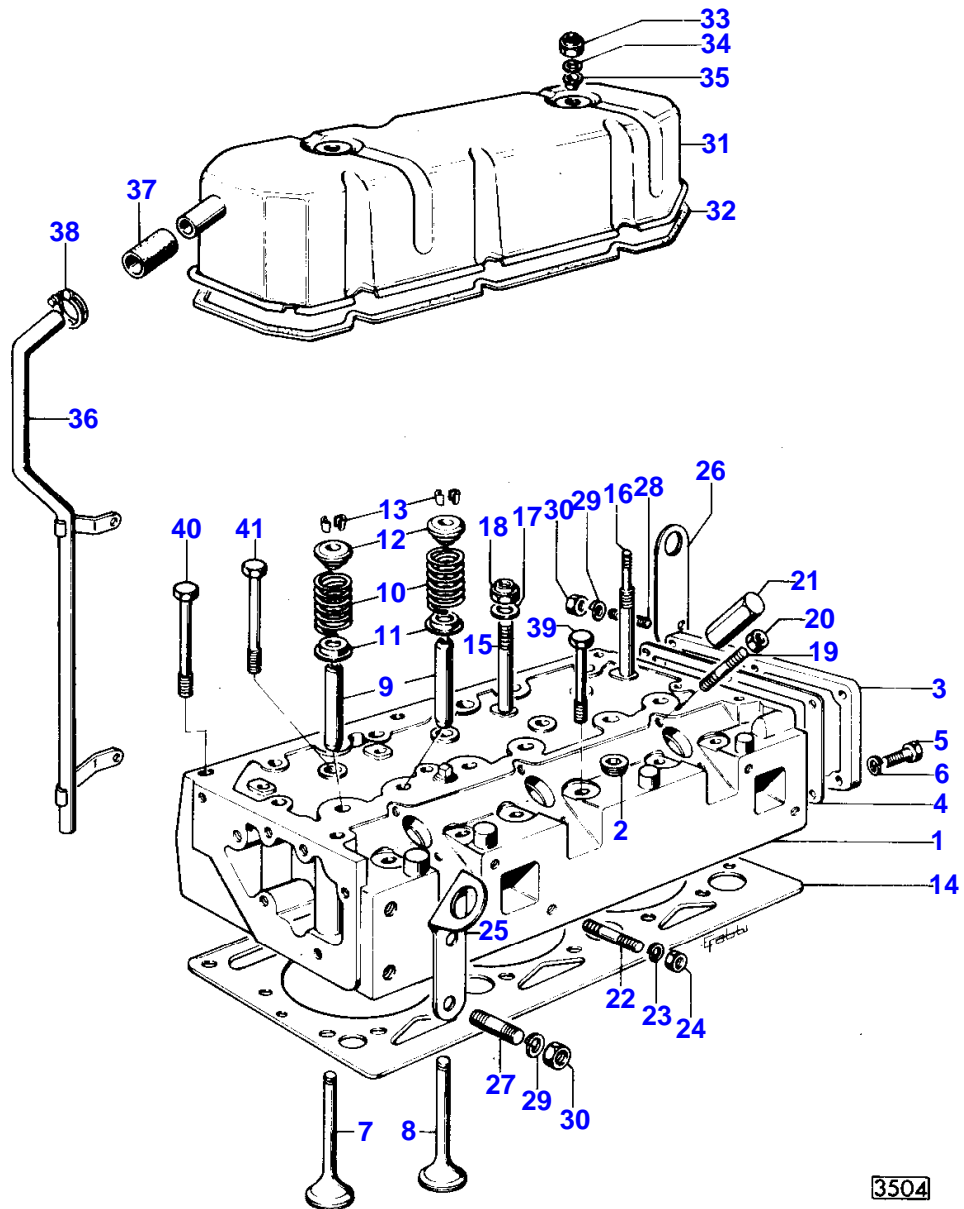
3503

CRANKSHAFT AND FLYWHEEL - AD3.152

Item	Part Number	Qty	Description	Comments
				AD3.152
1	84774	3	Connection	
2	0095250	6	Bolt	1
3	33221319	6	Nut	1
4	31134151	3	Bush	1
5	89214	3	Kit, Piston	
6	0170001	6	Circlip	1
7	86781	3	Kit, Ring	
8	84402	1	Crankshaft	Up to Serial or Engine Number 152UA391043DL
	94458	1	Kit, Crankshaft	From Serial or Engine Number 152UA391044DL
9	58703	X	Kit, Bearing	(A)
				8
9	58703A	X	Bearing	(A)
				Thickness -0,254 MM
9	58703B	X	Kit, Bearing	(A)
				Thickness -0,508 MM
9	58703C	X	Kit, Bearing	(A)
				Thickness -0,762 MM
10	85036	X	Kit, Bearing	(A)
				8
10	85036A	X	Kit, Bearing	(A)
				Thickness -0,254 MM
10	85036B	X	Kit, Bearing	(A)
				Thickness -0,508 MM
10	85036C	X	Kit, Bearing	(A)
				Thickness -0,762 MM
11	31137211	2	Thrust Washer	8
	31197192	X	Ring	Thickness +0,178 MM
12	33137221	2	Thrust Washer	
	31137202	X	Thrust Washer	Thickness +0,178 MM
13	36271704	1	Woodruff Key	
14	0995415	2	Weight	
15	2185189	4	Screw	
16	31731516	2	Washer	
	31731515	2	Washer	
17	31147785	1	Pulley	
18	33176308	1	Flange	
19	32162312	1	Screw	
20	33125112	1	Washer	
21	1824617M1	1	Flywheel	
	1825512M1	1	Flywheel	(B)
22	0410236	1	Starter Ring	
23	973013M1	6	Bolt	
24	0921062	3	Tab Washer	
25	1817069M1	2	Pin	
26	339599X1	1	Bearing Ball	
				(A)
				BEARINGS ARE PRE-FINISHED
				(B)
				PROVIDED WITH DOUBLE CLUTCH ONLY

I2

<p>CYLINDER HEAD AND COVER</p> <p>CULASSE ET COUVERCLE</p> <p>ZYLINDERKOPF UND DECKEL</p> <p>TESTA CILINDRI E COPERCHIO</p> <p>CULATA Y TAPA</p>	<p>AD3.I52</p> <p>AD3.I52</p> <p>AD3.I52</p> <p>AD3.I52</p> <p>AD3.I52</p>
--	--

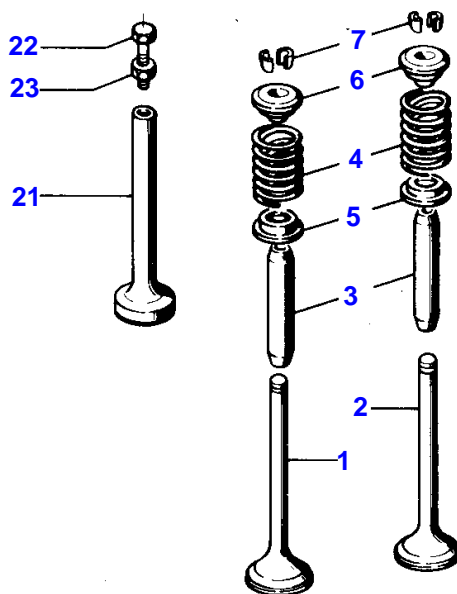
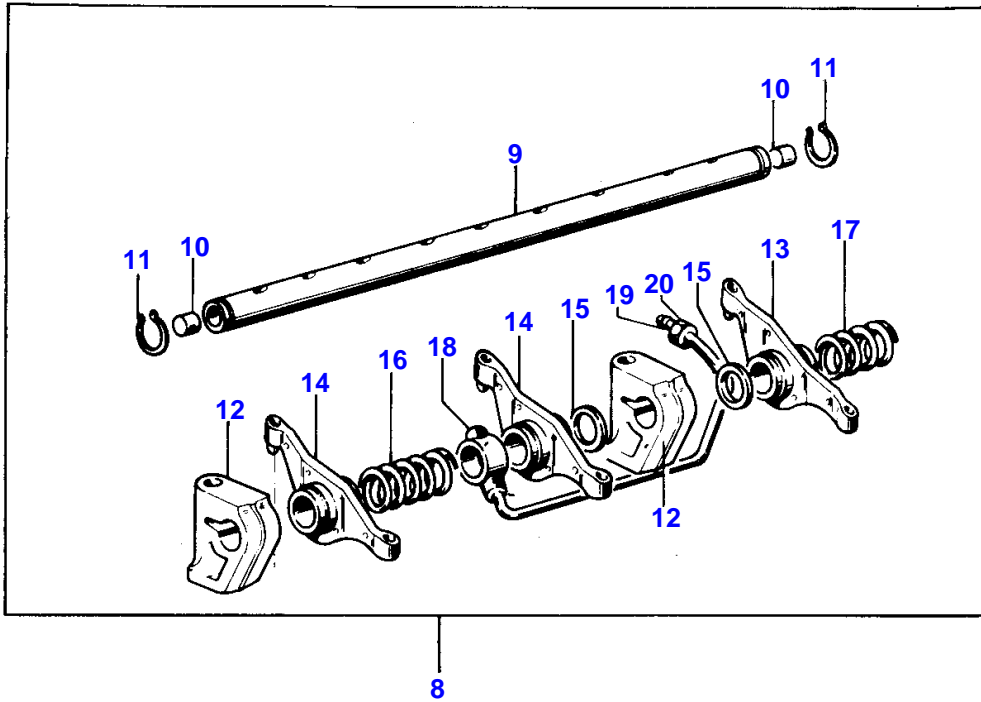


CYLINDER HEAD AND COVER - AD3.152

Item	Part Number	Qty	Description	Comments
				AD3.152
1	89141	1	Cylinder Head	
2	2431154	2	Plug	1
3	0940737	1	Plate	1
4	0490485	1	Joint	1
5	0746254	6	Setscrew	1
6	0290053	6	Lock Washer	1
7	31431761	3	Valve Exhaust	1
8	31431761	3	Valve Exhaust	1
9	33261723	6	Guide	1
10	0780006	6	Spring	1
11	33415133	6	Washer	1
12	0150008	6	Cap	1
13	33173115	12	Cotter	(A) 1
14	36812127	1	Gasket	
15	0826469	2	Stud	
16	32754412	2	Stud	
17	0920004	4	Washer	
18	2211283	4	Nut	
19	0826264	6	Stud	
20	0576002	3	Nut	
21	32726512	3	Nut	
22	0826243	4	Stud	
23	0920003	4	Washer	
24	2188134	4	Nut	
25	36456321	1	Plate	
26	36531408	1	Plate	
27	0826462	2	Stud	
28	0826466	2	Stud	
29	0920054	4	Washer	
30	0576051	4	Nut	
31	37188557	1	Cyl.Head Cover	
32	36811115	1	Joint	
33	0576102	2	Nut	
34	0920003	2	Washer	
35	0920302	2	Washer	
36	35732479	1	Pipe	
37	0202058	1	Hose	
38	0180103	2	Clip	
39	32181447	4	Screw	From Serial or Engine Number 152UA431805DL
40	32181445	3	Screw	From Serial or Engine Number 152UA431805DL
41	32181446	9	Screw	From Serial or Engine Number 152UA431805DL (A) SERVICED IN PAIR

16

<p>ROCKER ARM ARBRE CULBUTEURS ZIPPHEBELWELLE ASSE E BILANCIERI EJE DE BALANCINES</p>	<p>AD3.152 AD3.152 AD3.152 AD3.152</p>
---	---



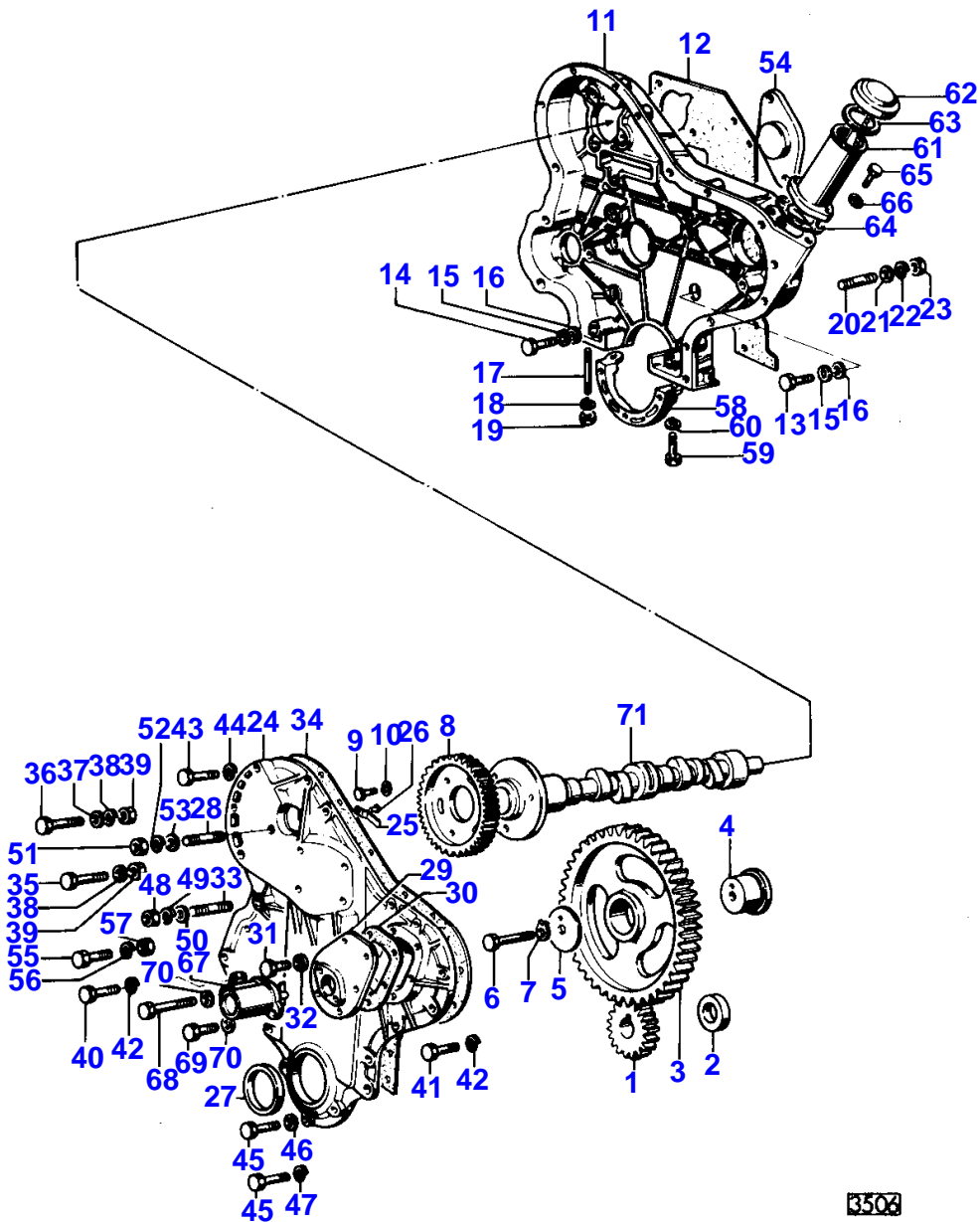
3505

Item	Part Number	Qty	Description	Comments
				AD3.152
1	31431681	3	Valve Inlet	
2	31431761	3	Valve Exhaust	
3	33261723	6	Guide	
4	0780006	6	Spring	
5	33415133	6	Washer	
6	0150008	6	Cap	
7	33731115	12	Kit	(A)
8	83135	1	Rocker Shaft	
9	53843	1	Rocker Shaft	8
10	0650507	2	Plug	9
11	0170033	2	Circlip	8
12	0101138	4	Bracket	8
13	0520429	3	Lever	8
14	0520430	3	Lever	8
15	0330505	4	Spacer	8
16	0780005	2	Spring	8
17	0780175	1	Spring	8
18	35568352	1	Pipe	8
19	0566002	1	Olive	18
20	0576111	1	Nut	18
21	0860012	6	Tappet	
22	0720677	6	Screw	
23	0576052	6	Nut	

(A)
SERVICED IN PAIRS

18

TIMING GEAR DISTRIBUTION STEUERUNG DISTRIBUZIONE DISTRIBUCION	AD3.152 AD3.152 AD3.152 AD3.152
---	--



MASSEY FERGUSON

MF 154 C CRAWLER - 1423889

1423889

18

TIMING GEAR - AD3.152

Item	Part Number	Qty	Description	Comments
				AD3.152
1	0410132	1	Gear	
2	0330811	1	Spacer	
3	31164362	1	Gear	
4	0995447	1	Hub	
5	0940738	1	Plate	
6	0095199	1	Screw	
7	0920883	1	Washer	
8	0410241	1	Gear	
9	0746214	3	Screw	
10	0920053	3	Washer	
11	37161481	1	Housing	
12	36814119	1	Joint	
13	0746355	12	Screw	
14	0096234	2	Bolt	
15	0920299	14	Washer	
16	33114118	14	Shim	
17	0826265	2	Stud	
18	0920053	2	Washer	
19	0576002	2	Nut	
20	0827619	3	Stud	
21	0920003	3	Washer	
22	0920053	3	Washer	
23	0576002	3	Nut	
24	90563	1	Cover	
25	0780067	1	Spring	24
26	2126466	1	Rivet	24
27	2414111	1	Seal	24
28	0827622	1	Stud	24
29	37523171	1	Cover	24
30	36862512	1	Joint	24
31	0748353	6	Screw	24
32	0410132	1	Gasket	24
33	0827622	1	Stud	24
34	36813136	1	Joint	
35	0096213	2	Bolt	
37	0920003	1	Washer	
38	0920053	3	Washer	
39	0576002	3	Nut	
40	0748354	1	Screw	
41	0748353	8	Screw	
42	0920052	9	Washer	
43	0748414	2	Setscrew	
44	0920053	2	Washer	
45	0748405	3	Screw	
46	2411152	1	Washer	
47	0920053	2	Washer	
48	0576002	1	Nut	
49	0920053	1	Washer	
50	0920497	1	Washer	
51	0576002	1	Nut	
52	0920053	1	Washer	
53	0920460	1	Spacer	
54	37461104	1	Plate	
55	0748510	2	Bolt	
56	0920054	2	Washer	
57	2238153	2	Nut	
58	37354312	1	Cover	
59	0096232	2	Bolt	
60	0920053	2	Washer	
61	35784123	1	Filler	
62	2487854	1	Cap	61
63	24870001	1	Joint	62
64	36837413	1	Joint	
65	0746254	2	Setscrew	
66	2411152	2	Washer	
67	2758346	1	Angle Drive	
68	0748353	1	Screw	
69	0748357	1	Screw	
70	2411151	2	Washer	

MASSEY FERGUSON

MF 154 C CRAWLER - 1423889

1423889

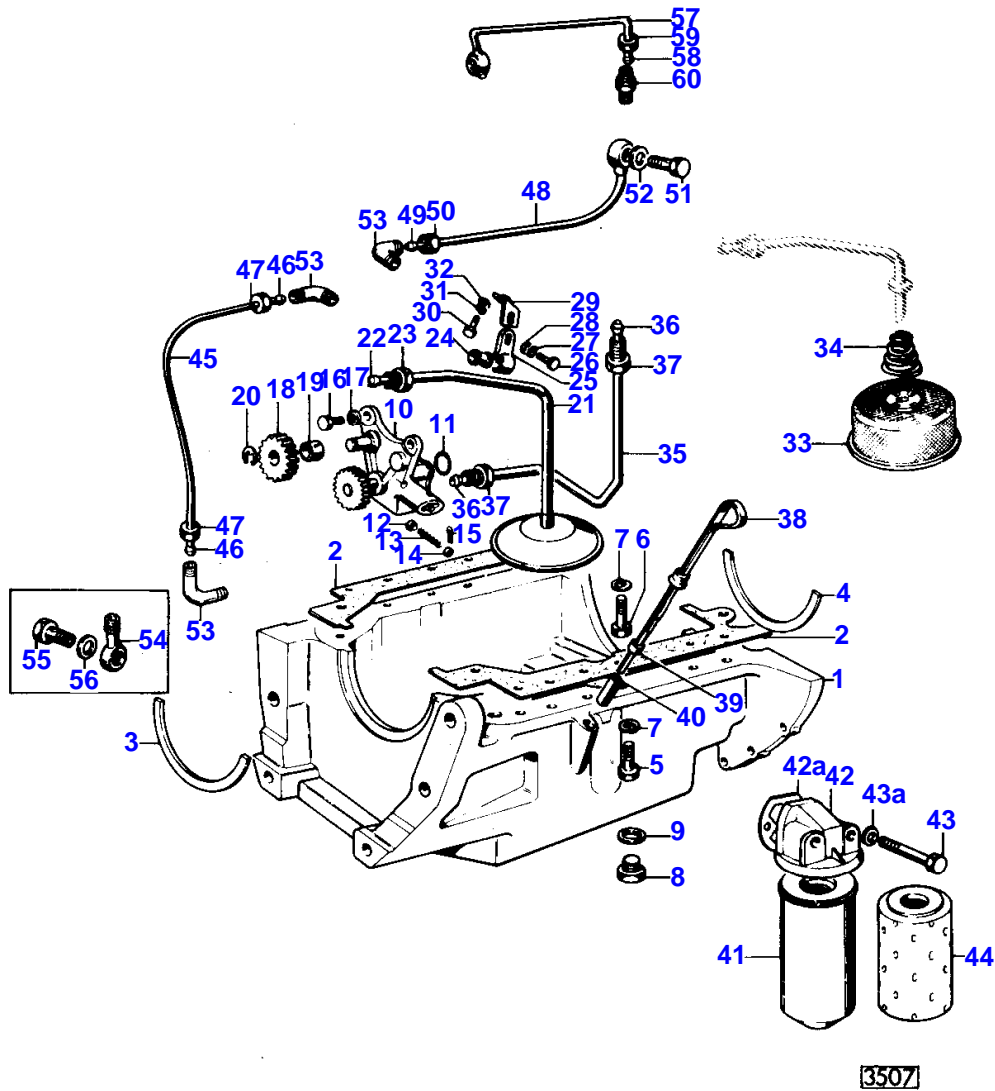
TIMING GEAR - AD3.152

18

Item	Part Number	Qty	Description	Comments
71	31415261	1	Camshaft	

24

<p>LUBRICATING OIL SYSTEM</p> <p>LUBRICATION SCHMIEREINRICHTUNG LUBRIFICAZIONE LUBRICATION</p>	<p>AD3. I52</p> <p>AD3. I52 AD3. I52 AD3. I52 AD3. I52</p>
--	--



Buy Now



Our support email:

ebooklibonline@outlook.com