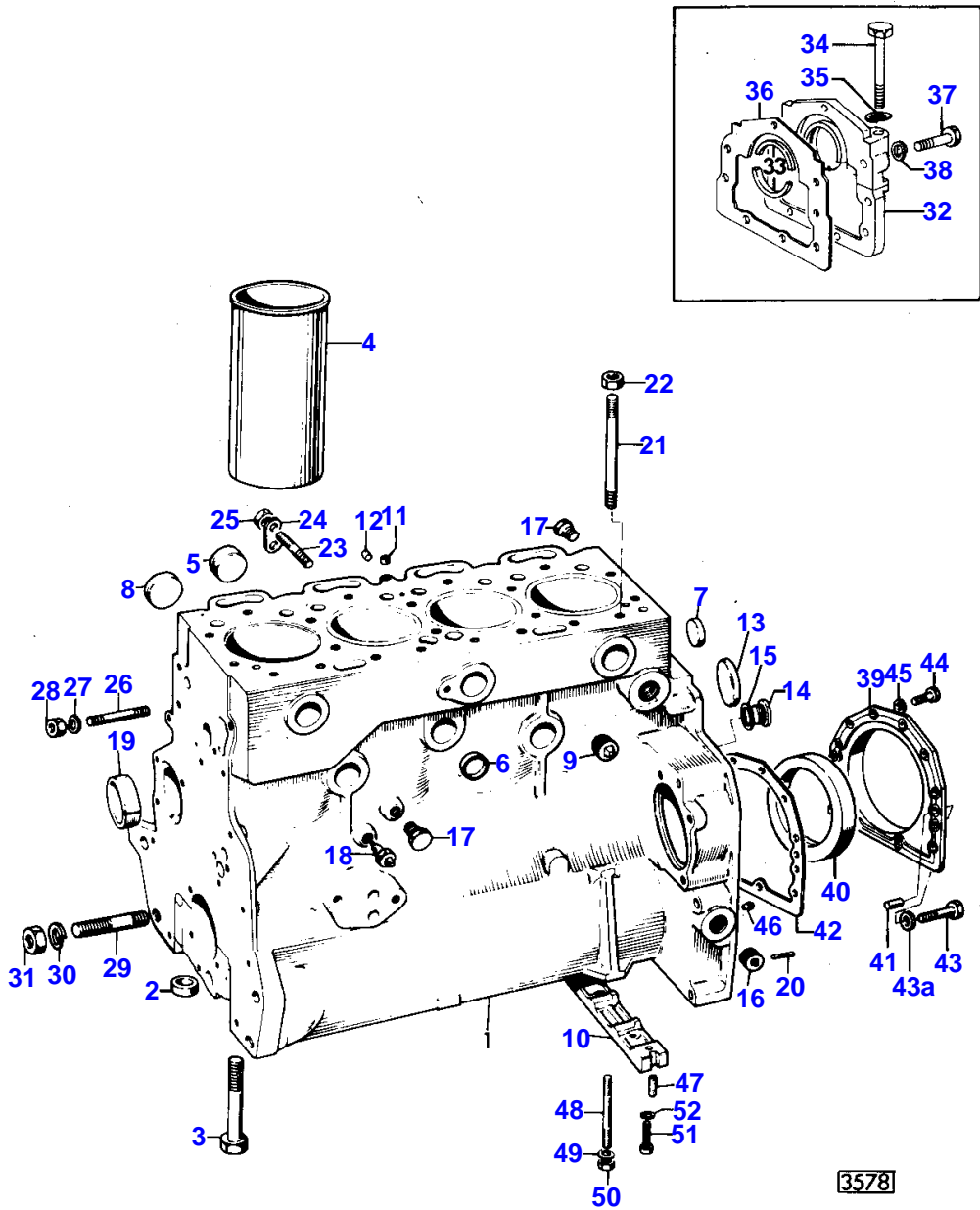


Page Title	Page Number
CYLINDER BLOCK - A4.212 - A4.236	2
CRANKSHAFT & FLYWHEEL - A4.212 - A4.236	6
CYLINDER HEAD AND COVER - A4.212 - A4.236	10
ROCKER ARM - A4.212 - A4.236	14
TIMING GEAR - A4.212 - A4.236	16
LUBRICATING OIL SYSTEM - A4.212	20
LUBRICATING OIL SYSTEM - A4.212 - A4.236	24
WATER PUMP - A4.212 - A4.236	30
FUEL INJECTION PUMP - A4.212 - A4.236	34
LIFT PUMP - A4.212 - A4.236	38
FUEL PIPINGS AND FUEL FILTER - A4.212 - A4.236	40
KIT GASKET - A4.212 - A4.236	42
ELECTRICAL EQUIPMENT - A4.212 - A4.236	44
COOLING SYSTEM - A4.212 - A4.236	52
FUEL TANK - A4.212 - A4.236	54
INDUCTION MANIFOLD - A4.212 - A4.236	56
AIR FILTER - FISPA	58
AIR FILTER - LAUTRETTE	60
EXHAUST MANIFOLD AND MUFFLER - A4.212 - A4.236	62
THROTTLE CONTROLS - A4.212 - A4.236	64
CLUTCH ASSEMBLY	66
DUAL CLUTCH - LUK TYPE	70
DOUBLE CLUTCH CONTROL	72
CLUTCH SHAFT BRAKING SYSTEM	78
TRANSMISSION HOUSING - CENTRE AXLE HOUSING	80
SYNCHRO-MESH TRANSMISSION	84
CONTROLS AND TRANSMISSION SHIFT LEVERS	88
CENTER GEAR UNIT	90
POWER TAKE OFF	92
POWER TAKE-OFF 540/1000 R.P.M.	96
BELT PULLEY	100
REAR AXLE-HOUSING	104
STEERING CLUTCH	108
BRAKES	112
FRONT SUSPENSION - REAR SUSPENSION	118
TRACK CARRIER	124
TRACK ROLLER	126
UPPER ROLLER	130
IDLER WHEEL	132
TRACK CHAIN	136
HYDRAULIC LIFT PUMP AND LINES	142
OIL PUMP - HYDRAULIC LIFT	146
HYDRAULIC CONTROL VALVE - HYDRAULIC LIFT	148
HYDRAULIC LIFT	152
CONTROL QUADRANTS	158
AUXILIARY HYDRAULICS VALVE AND PIPES	164
AUXILIARY HYDRAULIC VALVES	168
AUXILIARY HYDRAULIC VALVES	170
LINKAGE - CAT 1	172
LINKAGE CAT 2	176
SWINGING DRAWBAR	180
HITCH	184
MOUNTING FRAME AND FRONT WEIGHTS	186
HOOD	188
SEAT - FENDERS - PLATFORM	192
TRACK GEAR GUARDS	196
INSTRUMENTS	198
DECALS	200
FRONT AND REAR LIGHTING EQUIPMENT	202
TOOL GROUP	208

2

CYLINDER BLOCK
 BLOC MOTEUR
 KURBELGEHAUSE
 BLOCCO CILINDRI
 BLOQUE DE CILINDROS

A4.212 - A4.236
 A4.212 - A4.236
 A4.212 - A4.236
 A4.212 - A4.236
 A4.212 - A4.236



3578

MASSEY FERGUSON

MF 174 C CRAWLER - 1423890

1423890

CYLINDER BLOCK - A4.212 - A4.236

2

Item	Part Number	Qty	Description	Comments
				A4.212 - A4.236
1	92877	1	Cylinder Block	Up to Serial or Engine Number 212UA187116L
	61676	1	Block	From Serial or Engine Number 212UA187117L
2	33142111	10	Thimble	1
3	32166329	10	Bolt	1
4	31358341	4	Liner	1
5	0650618	6	Plug	1
6	0650563	6	Plug	1
7	0650563	2	Plug	1
8	0650577	4	Plug	
9	0650588	2	Plug	
10	36277831	1	Bridge Piece	
11	32417134	1	Plug	
12	32114461	1	Plug	
13	32416105	1	Plug	
14	0650582	1	Plug	
15	0920130	1	Washer	
16	0650588	1	Plug	
17	32161114	2	Plug	
18	1825120M91	1	Pressure Switch	
19	31134132	1	Bush	
20	0350018	2	Dowel	
21	32526312	2	Stud	
22	33221316	2	Nut	
23	0826222	4	Stud	
24	36241316	2	Plate	
25	33221115	4	Nut	
26	0826469	1	Stud	
27	0920054	1	Washer	
28	0576051	1	Nut	
29	974496M1	2	Bolt	
30	391414X1	2	Washer	
31	393643X1	2	Nut Metric	
32	59537	1	Kit, Housing	(A)
33	36883108	2	Seal	(A)
				32
34	0096238	2	Bolt	(A)
				32
35	0920053	2	Washer	(A)
				32
36	36817136	1	Joint	(A)
37	0746211	11	Bolt	(A)
38	0920053	11	Washer	(A)
39	37513851	1	Housing	(B)
40	2415391	1	Seal	(B)
41	0350009	2	Dowel	(B)
42	36817157	1	Joint	(B)
43	2172530	2	Capscrew	(B)
43A	33112111	2	Washer	(B)
44	0746211	10	Bolt	(B)
45	0920003	10	Washer	(B)
46	32452113	1	Pointer	
47	32811408	2	Joint	
48	32517128	2	Stud	
49	0920053	2	Washer	
50	0576002	2	Nut	
51	2176369	2	Screw	
52	0920521	2	Washer	
				(A)
				Up to Serial or Engine Number 212UA187116L
				(B)
				From Serial or Engine Number 212UA187117L

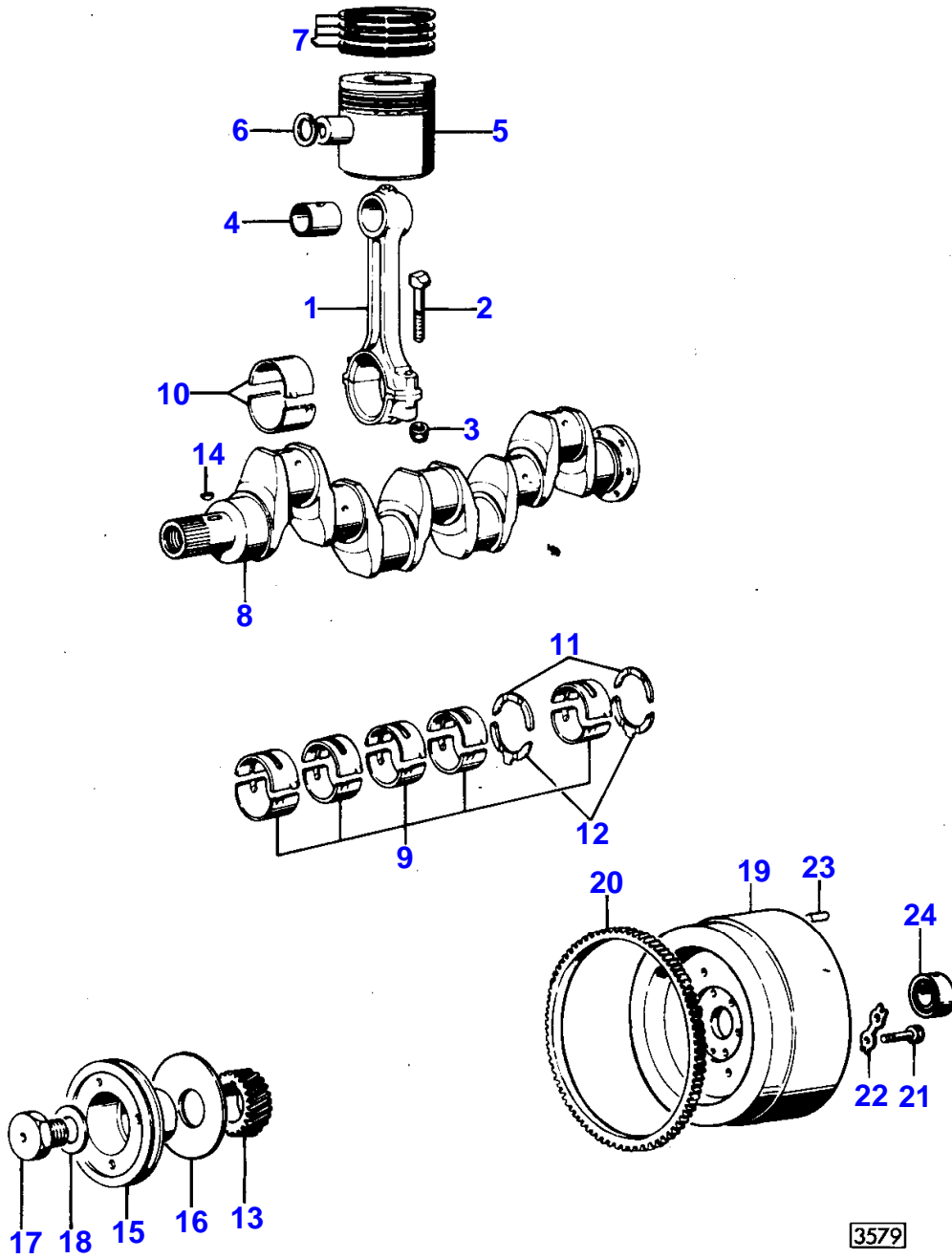
6

CRANKSHAFT & FLYWHEEL

VILEBREQUIN ET VOLANT
 KURBELWELLE UND SCHWUNGRAD
 ALBERO MOTORE E VOLANO
 CINGUENAL Y VOLANTE

A4.212 - A4.236

A4.212 - A4.236
 A4.212 - A4.236
 A4.212 - A4.236
 A4.212 - A4.236



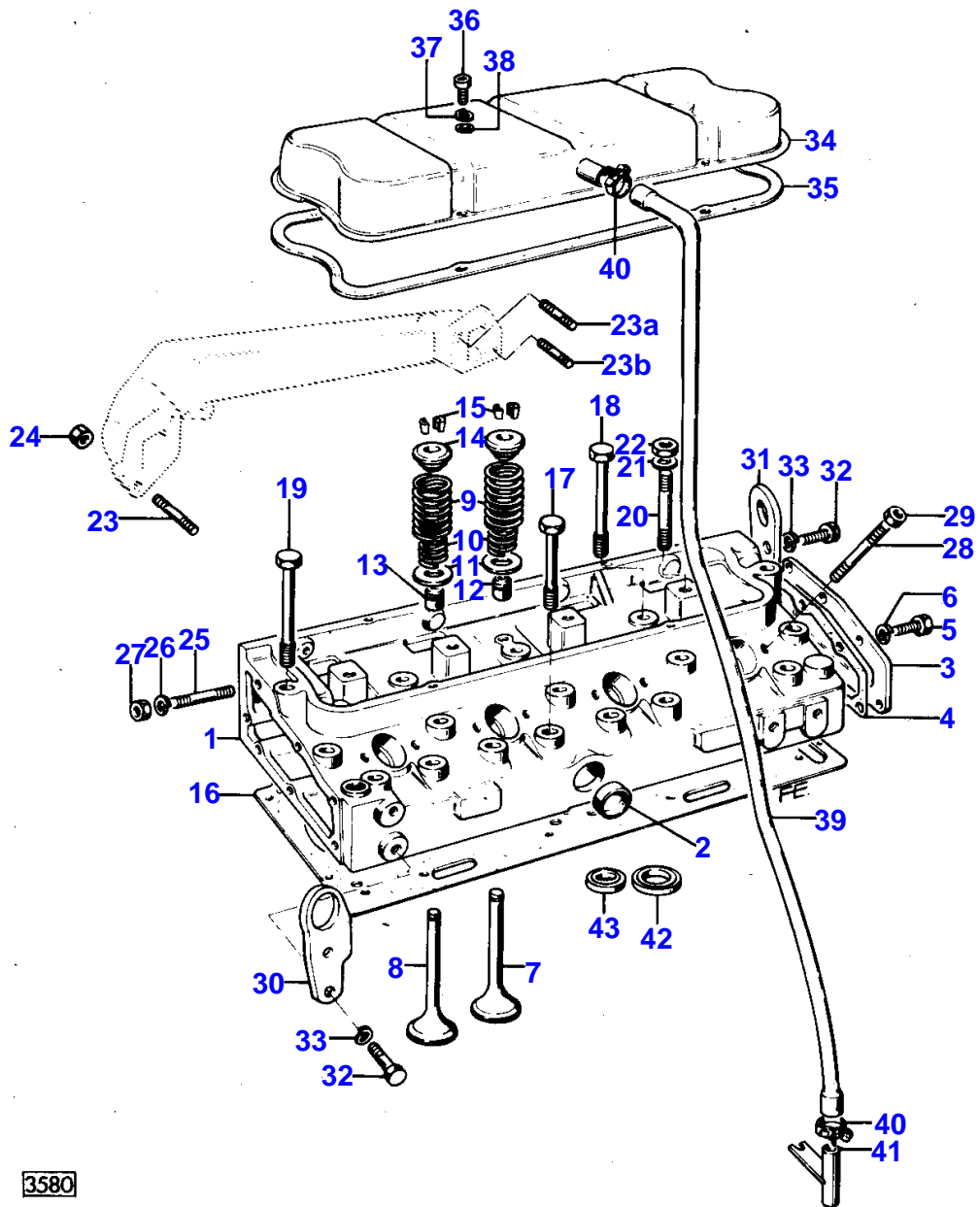
CRANKSHAFT & FLYWHEEL - A4.212 - A4.236

Item	Part Number	Qty	Description	Comments
				A4.212 - A4.236
1	84920	4	Conrod	
2	32762116	8	Bolt	
3	33221321	8	Nut	
4	31134123	4	Bush	
5	86721	4	Kit, Piston	Up to Serial or Engine Number 3205000
	68301	4	Kit, Piston	From Serial or Engine Number 3205001
6	0170002	8	Circlip	5
7	92465	4	Kit, Ring	Up to Serial or Engine Number 3205000
	92463	4	Kit, Ring	From Serial or Engine Number 3205001
8	85719	1	Kit, Crankshaft	Up to Serial or Engine Number 212UA187116L
	94430	1	Kit, Crankshaft	(B) From Serial or Engine Number 212UA187117L
8	94435	1	Kit, Crankshaft	From Serial or Engine Number 3205001
9	81558	1	Kit, Bearing	8
	81558A	X	Kit, Bearing	(A) Thickness -0,254MM
9	81158B	X	Kit, Bearing	(A) Thickness -0,508MM
9	81558C	X	Kit, Bearing	(A) Thickness -0,762MM
10	85042	1	Kit, Bearing	(A) 8
10	85042A	X	Kit, Bearing	(A) Thickness -0,254MM
10	85042B	X	Kit, Bearing	(A) Thickness -0,508MM
10	85042C	X	Kit, Bearing	(A) Thickness -0,762MM
11	31137311	2	Washer	8
	31137312	X	Thrust Washer	Thickness +0,178MM
12	31137321	2	Washer	8
	31137322	X	Thrust Washer	Thickness +0,178MM
13	31171681	1	Gear,Crankshaft	
14	0500012	1	Woodruff Key	
15	31148792	1	Pulley	
16	33125416	1	Washer	
17	32162319	1	Screw	
18	33125124	1	Washer	
19	1824618M1	1	Flywheel	
	1825511M1	1	Flywheel	(C)
20	0410236	1	Starter Ring	
21	973013M1	6	Bolt	
22	0921062	3	Tab Washer	
23	1817069M1	2	Pin	
24	339599X1	1	Bearing Ball	(A) BEARINGS ARE PRE-FINISHED (B) UP TO TRACTOR NO 3205000 (C) PROVIDED WITH DOUBLE CLUTCH ONLY

10

CYLINDER HEAD AND COVER
 CULASSE ET COUVERCLE
 ZYLINDERKOPF UND DECKEL
 TESTA CILINDRI E COPERCHIO
 CULATA Y TAPA

A4.212 - A4.236
 A4.212 - A4.236
 A4.212 - A4.236
 A4.212 - A4.236
 A4.212 - A4.236



3580

CYLINDER HEAD AND COVER - A4.212 - A4.236

Item	Part Number	Qty	Description	Comments
				A4.212 - A4.236
1	68115	1	Cylinder Head	
2	0650563	1	Plug	1
3	37553121	1	Cover	1
4	36851409	1	Joint	1
5	0746254	6	Setscrew	1
6	0920053	6	Washer	1
7	31431641	4	Valve Inlet	1
	31431401	X	Valve Inlet	Thickness +0,076MM
	31431402	X	Valve Inlet	Thickness +0,38MM
	31431403	X	Valve Inlet	Thickness +0,76MM
8	31431881	4	Valve Exhaust	1
	31431411	X	Valve Exhaust	Thickness +0,076MM
	31431412	X	Valve Exhaust	Thickness +0,38MM
	31431413	X	Valve Exhaust	Thickness +0,76MM
9	31744121	8	Spring	
10	31744131	8	Spring	
11	33123117	8	Washer	
12	33817125	4	Seal	
13	33817117	4	Seal	
14	33423122	8	Cap	
15	33173108	8	Cotter	(A)
16	36812338	1	Gasket	
17	32181424	6	Screw	
18	32181425	12	Screw	
19	32181426	2	Screw	
20	0826628	4	Stud	
21	0920006	1	Washer	
22	2211284	4	Nut	
23	0826410	2	Stud	
23A	0826490	1	Stud	
23B	0826510	1	Stud	
24	2188135	4	Nut	
25	0826467	1	Stud	
26	0920054	1	Washer	
27	0576051	1	Nut	
28	0826280	8	Stud	
29	0576002	8	Nut	
30	36475706	1	Plate	
31	36177111	1	Plate	
32	0746453	4	Setscrew	
33	0920054	4	Washer	
34	37188549	1	Cyl.Head Cover	
35	36811122	1	Joint	
36	2172513	4	Screw	
37	0920052	4	Washer	
38	0920002	4	Washer	
39	33872516	1	Pipe	
40	2481802	2	Clip	
41	35731144	1	Connection	
42	33125121	4	Insert	
43	33152139	4	Insert	

(A)
SERVICED IN PAIRS

I4

ROCKER ARM

ARBRE CULBUTEURS
 ZIPPHEBELWELLE
 ASSE E BILANCIERI
 EJE DE BALANCINES

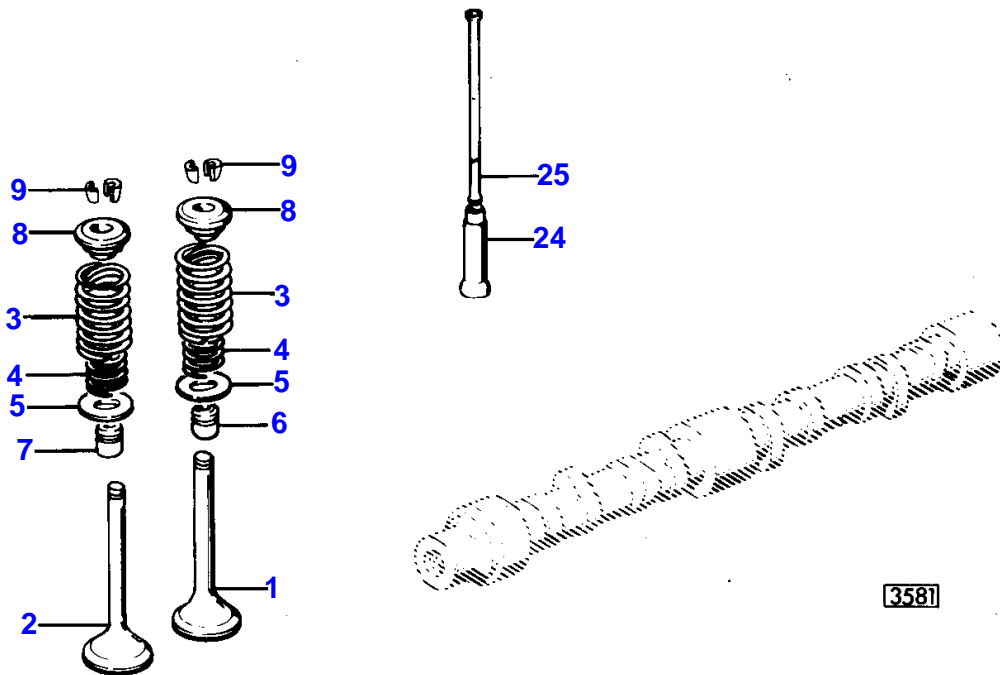
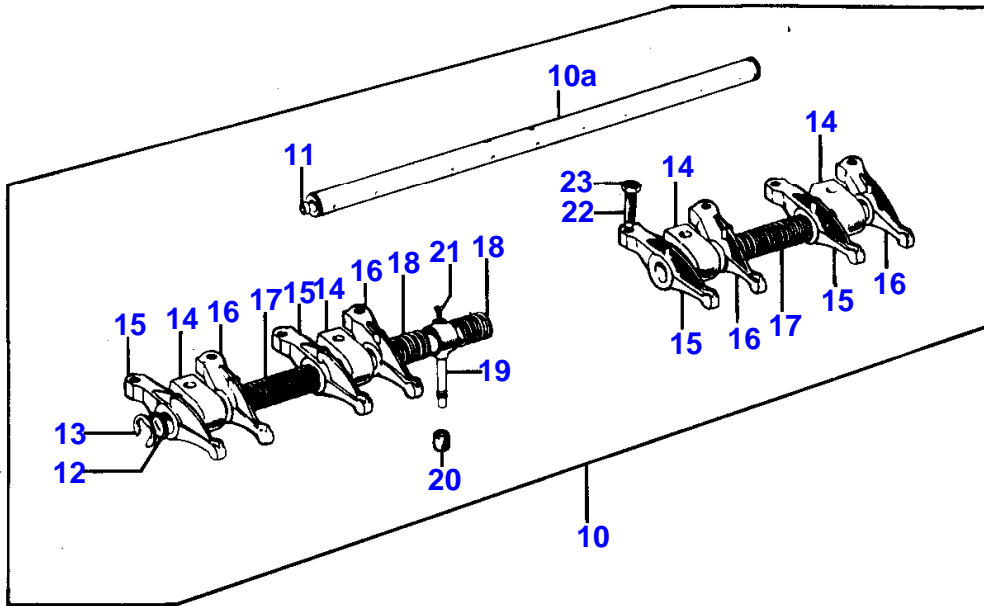
A4.212 - A4.236

A4.212 - A4.236

A4.212 - A4.236

A4.212 - A4.236

A4.212 - A4.236



3581

Item	Part Number	Qty	Description	Comments
				A4.212 - A4.236
1	31431641	4	Valve Inlet	
	31431401	X	Valve Inlet	Thickness +0,076MM
	31431402	X	Valve Inlet	Thickness +0,38MM
	31431403	X	Valve Inlet	Thickness +0,76MM
2	31431881	4	Valve Exhaust	
	31431411	X	Valve Exhaust	Thickness +0,076MM
	31431412	X	Valve Exhaust	Thickness +0,38MM
	31431413	X	Valve Exhaust	Thickness +0,76MM
3	31744121	8	Spring	
4	31744131	8	Spring	
5	33123117	8	Washer	
6	33817125	4	Seal	
7	33817117	4	Seal	
8	33423122	8	Cap	
9	33173108	8	Cotter	(A)
10	87618	1	Rockerarm	
10A	83450	1	Shaft	10
11	0650507	2	Plug	10A
12	33117415	2	Washer	10
13	0170151	2	Circlip	10
14	37521331	4	Bracket	10
15	37371271	4	Lever	10
16	37371281	4	Lever	10
17	31744123	2	Spring	10
18	31743108	2	Spring	10
19	35511111	1	Pipe	10
20	33811113	1	Seal	10
21	0726504	1	Setscrew	10
22	0720579	8	Screw	10
23	0576052	8	Nut	10
24	31434163	8	Tappet	
25	31434307	8	Pushrod	
				(A)
				IN PAIRS

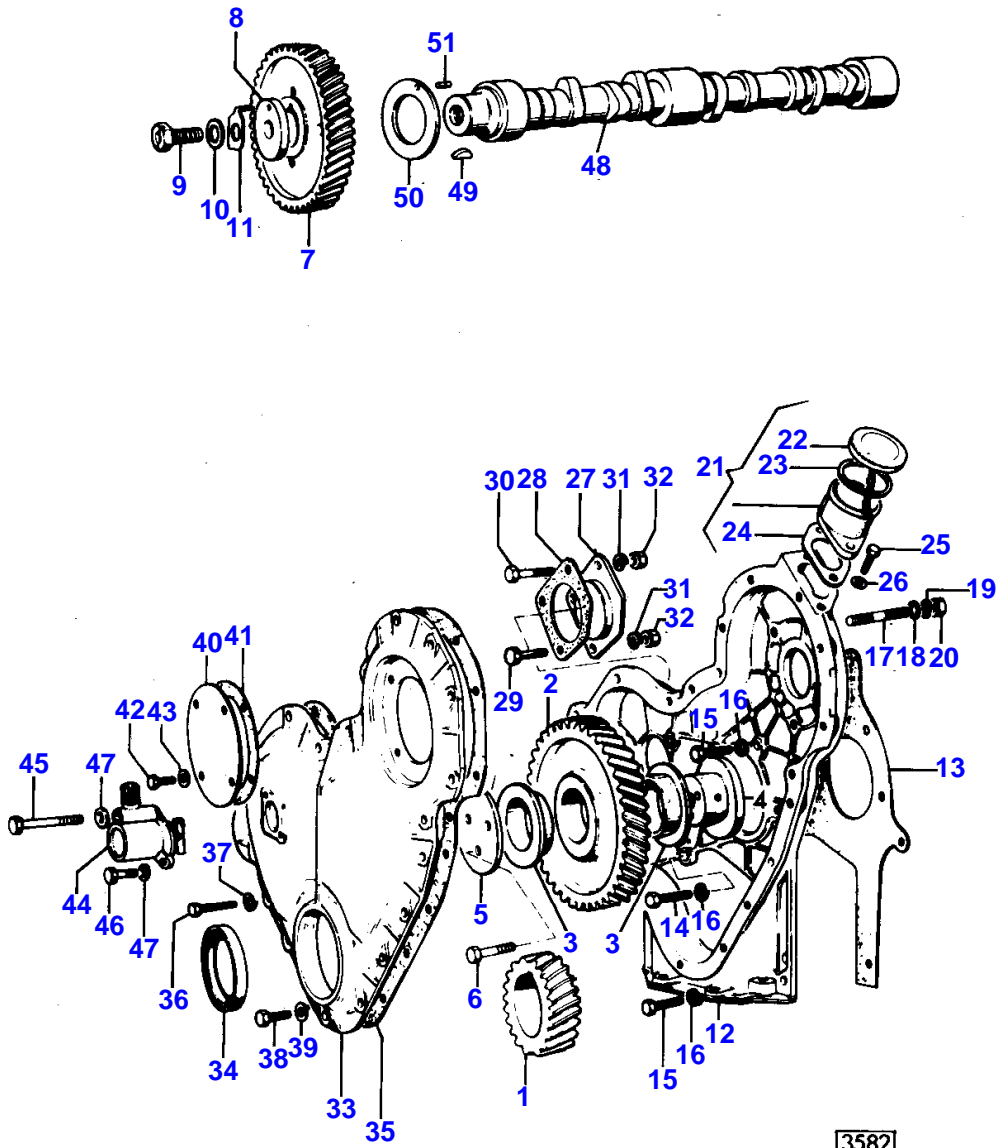
I6

TIMING GEAR

DISTRIBUTION
 STEUERUNG
 DISTRIBUZIONE
 DISTRIBUCION

A4.212 - A4.236

A4.212 - A4.236
 A4.212 - A4.236
 A4.212 - A4.236
 A4.212 - A4.236



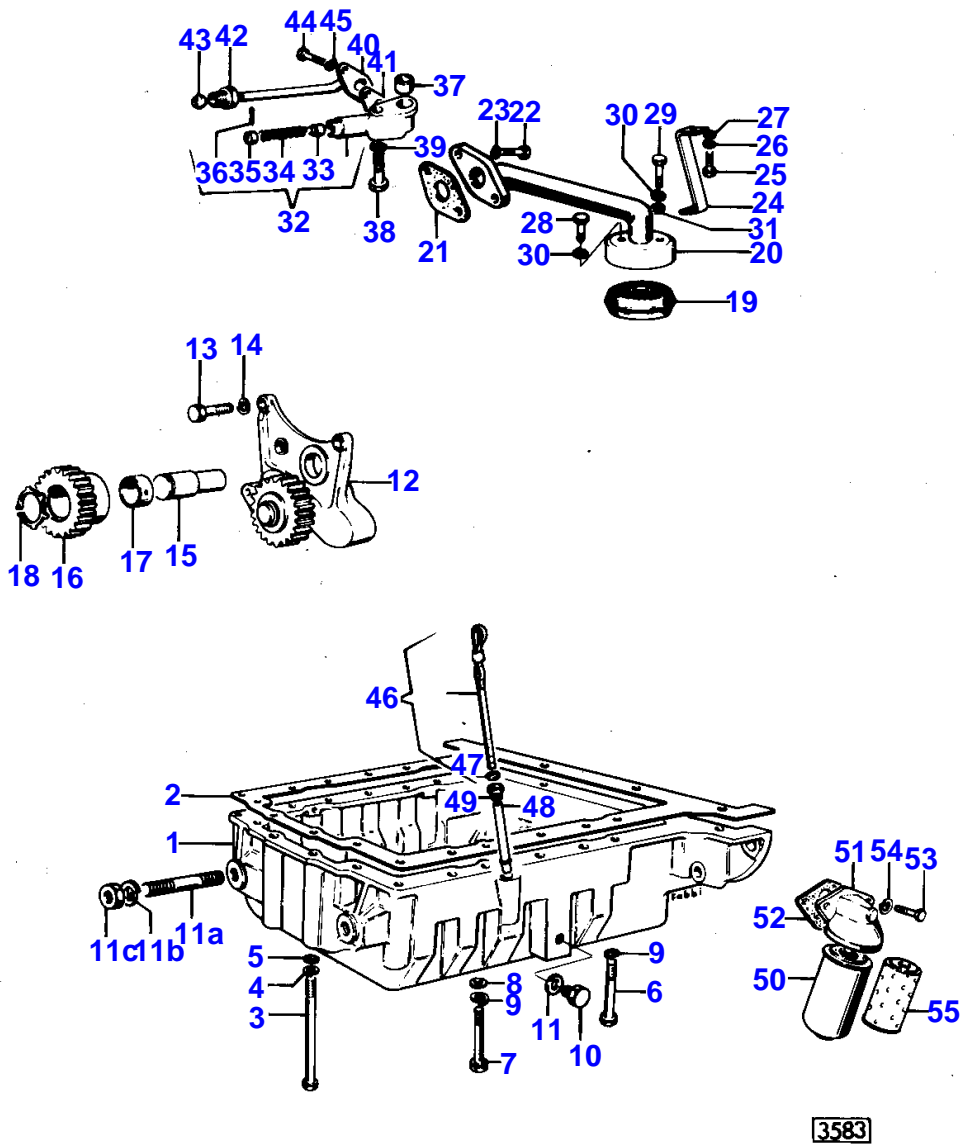
TIMING GEAR - A4.212 - A4.236

Item	Part Number	Qty	Description	Comments
				A4.212 - A4.236
1	31171681	1	Gear	
2	41115023	1	Idler	
3	0050345	2	Bush	2
4	33426161	1	Hub	
5	0941082	1	Plate	
6	0096439	3	Bolt	
7	31171353	1	Gear	
8	33153128	1	Washer	
9	32161209	1	Screw	
10	33115408	1	Washer	
11	31733121	1	Washer	
12	37161642	1	Housing	
13	36814127	1	Joint	
14	0746211	1	Bolt	
15	0746255	8	Setscrew	
16	0920053	9	Washer	
17	0826277	3	Stud	
18	0920003	3	Washer	
19	0920053	3	Washer	
20	0576002	3	Nut	
21	35784111	1	Filler	
22	2487854	1	Cap	21
23	24870001	1	Joint	22
24	36862138	1	Joint	
25	0746254	2	Setscrew	
26	2411152	2	Washer	
27	37556148	1	Plate	
28	36861429	1	Joint	
29	0748505	1	Screw	
30	2232151	2	Screw	
31	0920054	3	Washer	
32	2238153	3	Nut	
33	41422703	1	Cover	
34	2415361	1	Seal	33
35	36813137	1	Joint	
36	0746255	14	Setscrew	
37	0920053	14	Washer	
38	0096238	4	Bolt	
39	2411152	4	Washer	
40	32413415	1	Cover	
41	33825419	1	Joint	
42	0746252	4	Screw	
43	2411152	4	Washer	
44	2758346	1	Angle Drive	
45	0746019	1	Screw	
46	0746053	1	Bolt	
47	2411151	2	Washer	
48	31415321	1	Camshaft	
49	0500012	1	Woodruff Key	
50	33153121	1	Washer	
51	2116053	1	Pin	

20

LUBRICATING OIL SYSTEM
 LUBRICATION
 SCHMIEREINRICHTUNG
 LUBRIFICAZIONE
 LUBRICATION

A4.2I2
 A4.2I2
 A4.2I2
 A4.2I2
 A4.2I2



MASSEY FERGUSON

MF 174 C CRAWLER - 1423890

1423890

LUBRICATING OIL SYSTEM - A4.212

20

Item	Part Number	Qty	Description	Comments
				A4.212 Up to Serial or Engine Number 212UA170105
1	37171823	1	Sump	
2	36815707	1	Joint	
3	2184435	6	Screw	
4	0920053	6	Washer	
5	0920003	6	Washer	
6	0096241	11	Bolt	
7	0096215	1	Screw	
8	0920003	1	Washer	
9	0920053	12	Washer	
10	2487004	1	Plug	
11	2411160	1	Gasket	
12	41314054	1	Pump	
13	0746255	3	Setscrew	
14	0920053	3	Washer	
15	32716117	1	Shaft	
16	31171461	1	Gear	
17	2511432	1	Bush	
18	2724402	1	Circlip	
19	37725443	1	Strainer	
20	35727512	1	Pipe	
21	36832122	1	Joint	
22	0746254	2	Setscrew	
23	0920053	2	Washer	
24	36535415	1	Clip	
25	0746253	1	Screw	
26	0920053	1	Washer	
27	0920003	1	Washer	
28	0746052	1	Bolt	
29	0746053	1	Bolt	
30	0920052	2	Washer	
31	0920002	1	Washer	
32	41371077	1	Relief Valve	
33	32712715	1	Plunger	32
34	31742128	1	Spring	32
35	33157122	1	Cap	32
36	0610012	1	Pin	32
37	0870001	1	Thimble	
38	0096438	1	Bolt	
39	0920054	1	Washer	
40	35714103	1	Pipe	
41	0490355	1	Joint	
42	33532121	1	Union	
43	0560244	1	Olive	
44	0746052	2	Bolt	
45	0920052	2	Washer	
46	31787437	1	Dipstick	
47	33812108	1	Washer	46
48	33435123	1	Tube	
49	33533103	1	Nut	
50	2654403	1	Oil Filter	
51	37764181	1	Filter Head	
52	36862517	1	Joint	
53	0746610	2	Bolt	
54	33115118	2	Washer	
55	26560090	1	Element	Up to Serial or Engine Number 212UA159976 (A) FOR ENGINES PRIOR TO SERIAL NO 212UA159977, USE OIL FILTER 2654403 WITH NO. (1) 37764181 - NO. (2) 33115118

Buy Now



Our support email:

ebooklibonline@outlook.com