

Page Title	Page Number
DRIVES (LEFT HAND)	2
DRIVES (RIGHT HAND)	4
DRIVES (ENGINE)	6
FEED HOUSING	8
FEEDER CONVEYOR	10
HEAD COUNTERSHAFT DRIVE	12
SHIELDS	14
FEEDER DRIVE	16
INLET HOUSING AND STONE TRAP	18
FEED IMPELLER	20
FEED IMPELLER DRIVE IDLER	22
ROTORS	24
ROTOR TRANSMISSION	26
MAIN COUNTERSHAFT	28
THRESHER DECLUTCH	30
MAIN COUNTERSHAFT GEARBOX	32
GRAIN PAN	34
SEPARATOR PAN AND PITMAN	36
SHAKER PITMAN AND DRIVE	38
CHAFFER	40
CONCAVES AND CONCAVE SHELL	42
CONCAVE ADJUSTMENT	44
DEFLECTOR PLATES	46
SEPARATOR SHELL AND GRATES	48
ROTOR EXHAUST HOUSING AND REAR PANEL	50
SHOE	52
FAN AND HOUSING	54
FAN DRIVE	56
RETURN ELEVATOR (LOWER SECTION)	58
RETURN ELEVATOR (UPPER SECTION)	60
RETURN ELEVATOR DRIVE	62
GRAIN ELEVATOR (LOWER SECTION)	64
GRAIN ELEVATOR (UPPER SECTION)	68
GRAIN ELEVATOR DRIVE	70
GRAIN TANK	72
MAIN UNLOADING AUGER AND GRAIN TANK HOPPERS	74
GRAIN TANK UNLOADER (LOWER)	76
UNLOADER AND GEAR BOX	78
UNLOADER DECLUTCH	80
SECONDARY UNLOADER DRIVE GEARBOX	82
SECONDARY UNLOADER DRIVE	84
CAB	86
CAB INSULATION	90
CONTROL PANEL	92
SEAT ASSEMBLY	94
SEAT SUSPENSION	96
GEAR SHIFT CONTROLS	98
HYDROSTATIC CONTROL LINKAGE	100
REEL AND HEAD CONTROLS	102
HYDROSTATIC CLUTCH	104
THROTTLE CONTROL	106
ROTOR SPEED CONTROL LEVER	108
UNLOADER CONTROLS	110
STEERING WHEEL AND MOUNTING	112
INSTRUMENT PANEL WIRING	114
BASIC CONTROLS, WIRING	116
CAB ROOF WIRING	118
ENGINE WIRING, BATTERY	120
MONITOR	122
MONITOR SENSORS AND WIRING	124
LIGHTS	126
WIRING HARNESS, MOUNTING BRACKET AND CLAMPS	128
DISC BRAKES, LEVERS AND PARKING BRAKES	130
BRAKE PEDALS, LINKAGE AND SUPPORTS	132
BRAKE VALVE	134
BRAKE ACTUATOR	136
HYDRAULIC BRAKE LINES	138
HYDRAULIC PUMP DRIVE	140

TABLE OF CONTENT

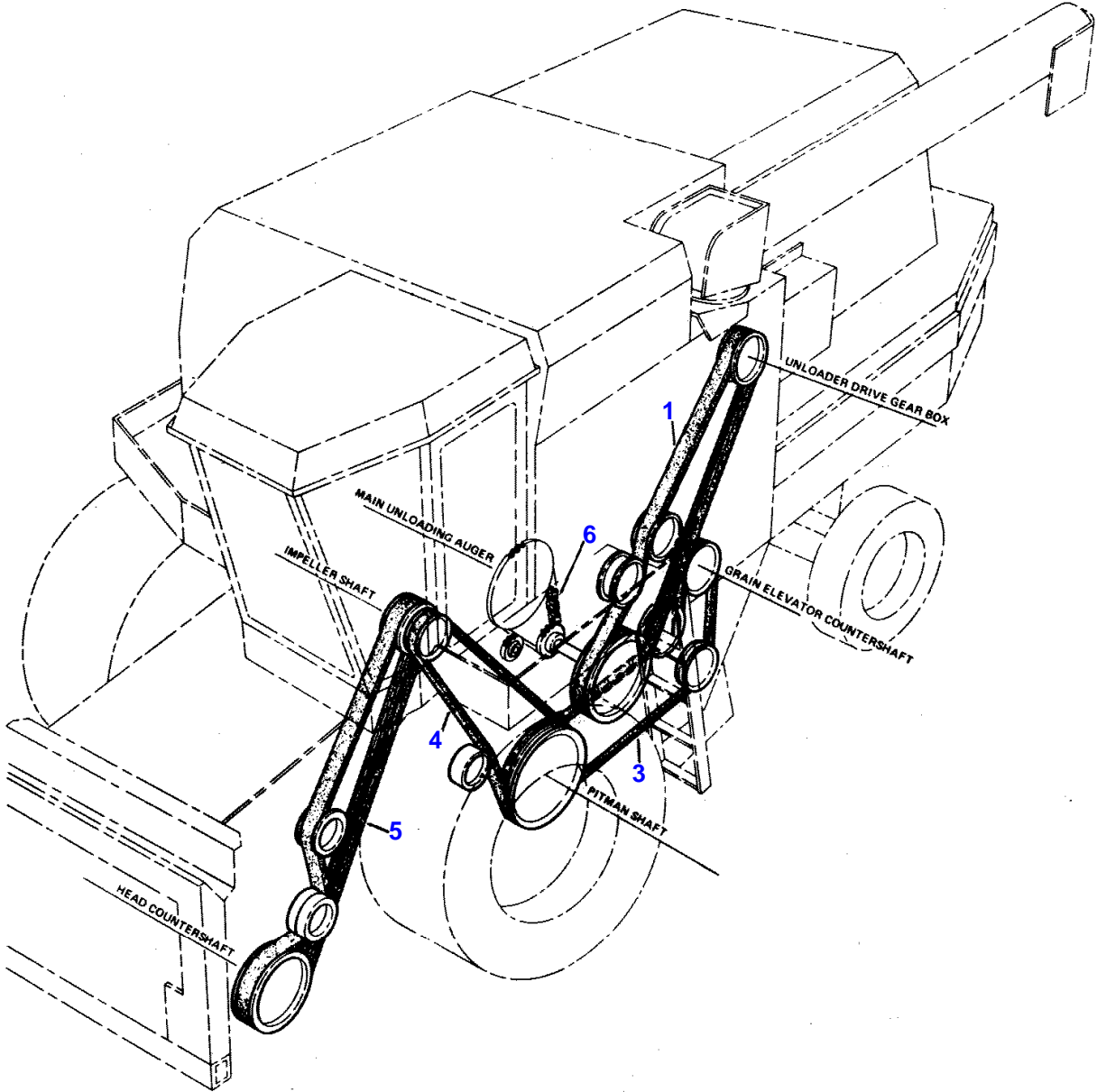
HYDROSTATIC PUMP DRIVE	142
HYDROSTATIC PUMP DRIVE	250
HYDRAULIC PUMP	144
HYDRAULIC RESERVOIR	146
HYDRAULIC OIL FILTER	148
HYDRAULIC LINES AND HOSES (CAB PLATFORM)	150
HYDRAULIC LINES AND HOSES (ENGINE)	152
MAIN CONTROL VALVE	154
HYDRAULIC UNLOADER CYLINDER AND LINES	156
CYLINDER AND LINES (VARIABLE SPEED ROTOR)	158
POWER STEERING HYDRAULIC LINES	160
POWER STEERING VALVE	162
POWER STEERING CYLINDER	164
TABLE LIFT CYLINDER	166
HYDRAULIC LINES (HEAD AND REEL LIFT)	168
HEAD LIFT VALVE	170
REEL LIFT VALVE	172
CYLINDER HEAD COVERS	174
CYLINDER HEAD	176
WATER PUMP AND THERMOSTAT HOUSING	178
CYLINDER BLOCK	180
CRANKSHAFT AND PISTONS	182
OIL PAN	184
OIL PUMP, PRESSURE RELIEF AND DUMP VALVE	186
OIL FILTER AND COOLER	188
OIL BREATHER	190
TIMING GEARS AND COVERS	192
FUEL FILTERS AND LINE	194
FUEL INJECTOR LINES, INJECTOR AND FITTING	196
FUEL INJECTION PUMP	200
LIFT PUMP, FUEL	204
FUEL LINES (TANK TO ENGINE)	206
FUEL TANK AND SUPPORT	208
AIR CLEANER AND INTAKE	210
INTAKE MANIFOLDS	212
EXHAUST MANIFOLDS	214
TURBOCHARGER	216
EXHAUST PIPES	218
ENGINE GASKETS SETS	220
ALTERNATOR	222
STARTER AND SOLENOID	226
SOLENOID	230
ROTARAY SCREEN AND AIR BOX	232
RADIATOR AIR BOX AND CORE FRAME	234
RADIATOR FRAME	236
RADIATOR FAN	238
ENGINE MOUNTING	240
REAR ENGINE DRIVE	242
TRANSMISSION	244
TRANSMISSION (OIL PUMP AND DIFFERENTIAL)	246
FINAL DRIVE	248
HYDROSTATIC PUMP	252
HYDROSTATIC LINES (ENGINE) (STANDARD)	256
HYDROSTATIC LINES (LOWER)	258
REAR AXLE (STANDARD)	260
REAR AXLE (HYDROSTATIC ASSIST)	262
HYDROSTATIC MOTOR	264
TORQUE HUB (REAR WHEEL ASSIST)	266
HYDRAULIC LINES (REAR WHEEL ASSIST)	268
HYDRAULIC LINES (SELECTOR VALVES)	270
DOUBLE SELECTOR VALVES	272
MAIN FRAME	274
CAB PLATFORM (RIGHT)	276
CAB AND PLATFORM AND LADDER (LEFT)	278
COVER (GEARBOX)	280
MOTOR COVER	282
CATWALK, SHIELDS AND HANDRAILS (RIGHT)	284
CATWALK, SHIELDS AND HANDRAILS (LEFT)	286
SHIELDS	288
---	---

TABLE OF CONTENT

MUD SHIELDS	290
DEFROSTER FAN AND WIPER	292
HEATER AND AIR CONDITIONING	294
AIR CONDITIONING (HOSES)	296
COMPRESSOR	298
CAB HEATER	300
CROP CHOPPER DRIVE	302
GEARBOX (CROP CHOPPER)	304
STRAW CHOPPER	306
DUAL STRAW SPREADER	308
DUAL STRAW SPREADER DRIVE	310
GEARBOX	312
CLEANING SCREENS	314
LABELS	316

2

DRIVES
(LEFT HAND)



1 449 394 M1

MASSEY 8590 COMBINE

ISSUE 1

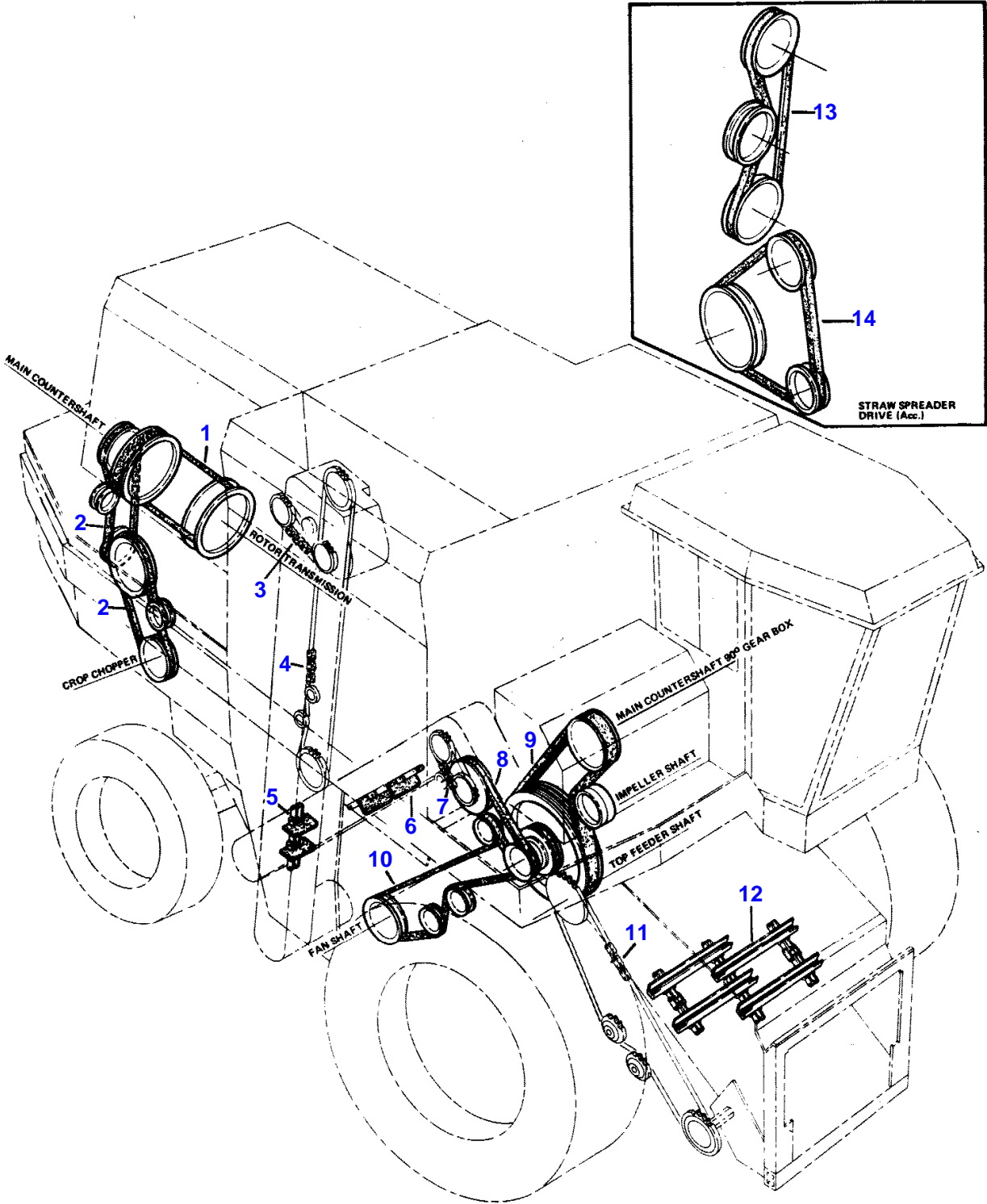
4/87

DRIVES (LEFT HAND)

Item	Part Number	Qty	Description
1	2496110W1	1	Belt, Unloader Drive (204-5/8")
3	2439700W1	1	Belt, Grain Elevator Drive (171")
4	2439710W1	1	Belt, Pitman Drive (130-7/8")
5	2523670W1	1	Belt, Head Counter Shaft Drive (197")
6	254508M91	1	Chain Assy, Unldr. Auger Dr. (3/4" Ptch, 82 Ptch) (See Page 74 For Repairs)

4

DRIVES
(RIGHT HAND)



1 449 394 M1

MASSEY 8590 COMBINE

ISSUE 1

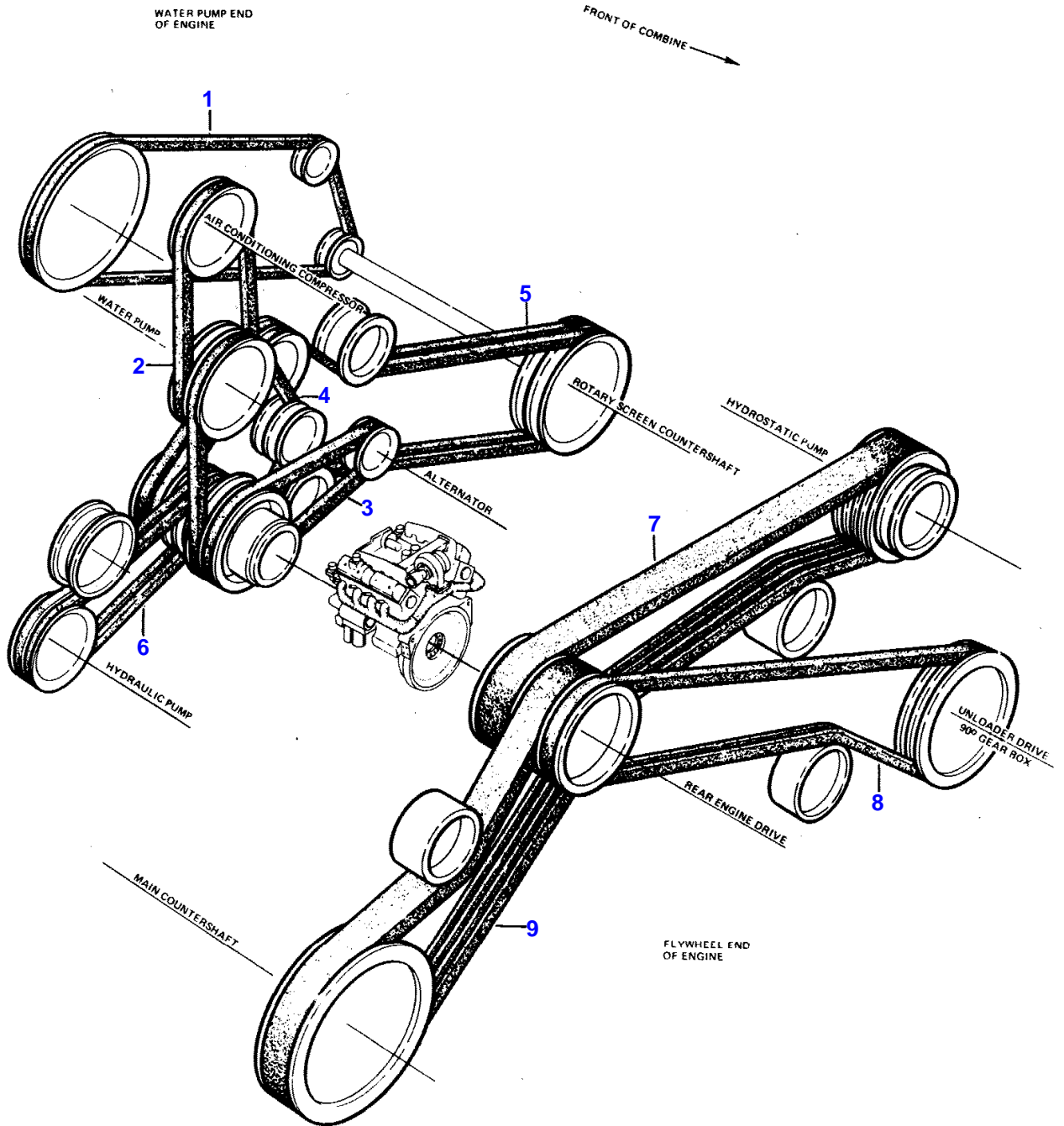
4/87

DRIVES (RIGHT HAND)

Item	Part Number	Qty	Description
1	2445370W1	1	Belt, Rotor Drive (103-1/4")
2	2553480W1	2	Belt, Crop Chopper Drive (77-45/64")
3	2536223W91	1	(A) Chain Assembly (5/8" Pitch, 77 Pitches) (See Page 69 For Repairs)
4	2528363W91	1	Chain Assy, Gr. Elvtr Dr. (5/8" Ptch., 267 Ptchs.) (See Page 65 For Repairs)
5	2605873W91	1	Chain Assy, Grain Elevator Conveyor (146 Pitches) (See Page 65 For Repairs)
6	2605863W91	1	Chain Assy, Return Elevator Conveyor (154 Pitches) (See Page 59 For Repairs)
7	2441963W91	1	(A) Chain Assembly (5/8" Pitch, 58 Pitches) (See Page 61 For Repairs)
8	2492070W1	1	Belt, Return Elevator Drive (68-3/4")
9	1594240W1	1	Belt, Feed Impeller Drive (123")
10	2439720W1	1	Belt, Cleaning Fan Drive (148")
11	2547703W91	1	(A) Chain Assy, Top Feed Shft (3/4" Ptch., 209 Ptchs.) (See Page 17 For Repairs)
112	2606273W91	1	Conveyor Assembly, Feeder (Serrated) (See Page 11 For Repairs)
12	2606263W91	1	Conveyor Assembly, Feeder (Plain) (See Page 11 For Repairs)
13	2543960W1	1	Belt, Straw Spreader (Primary)(72-3/32")
14	2543970W1	1	Belt, Straw Spreader (Secondary)(64-3/32")

(A) Part Number For Reference Only.

DRIVES
(ENGINE)

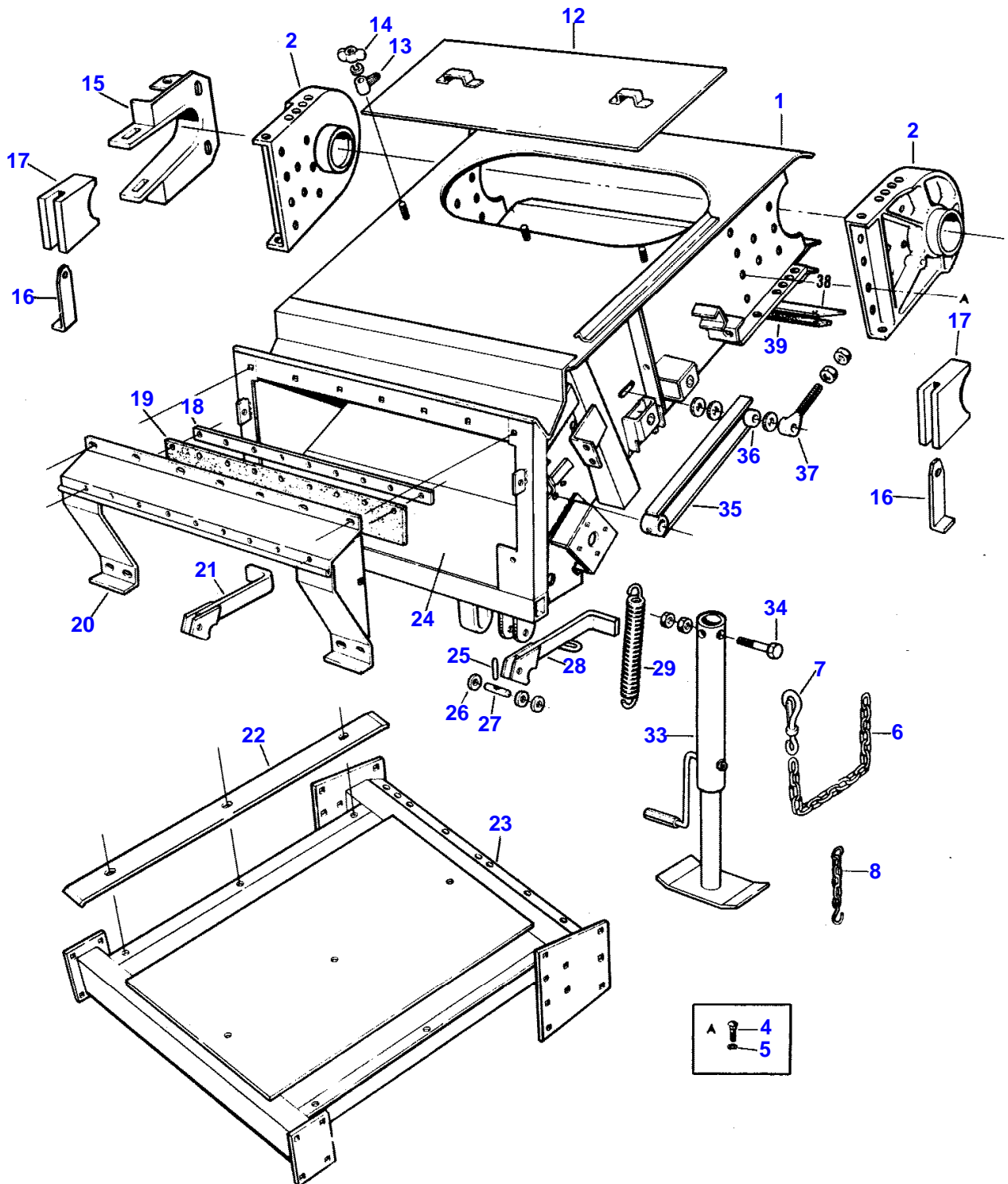


DRIVES (ENGINE)

Item	Part Number	Qty	Description
1	514891M1	1	Belt, Rotary Screen Drive (82-9/64")
2	2498110W1	1	Belt, Compressor (45-3/4")
3	137591M1	1	Belt, Alternator (42-1/2")
4	186976M1	1	Belt, Alternator (49")
5	2449290W1	2	Belt, Fan and Countershaft (Set Of 2)(90-1/4")
6	2604010W91	2	Belt, Hydraulic Pump (Set Of 2)(79-31/64")
7	2449520W1	1	Belt, Hydrostatic Pump (87")
8	2605020W1	1	Belt, Unloader Primary Drive (112-29/32")
9	2404170W1	1	Belt, Thresher Drive (103-11/32")

8

FEED HOUSING



1 449 394 M1

MASSEY 8590 COMBINE

ISSUE 1

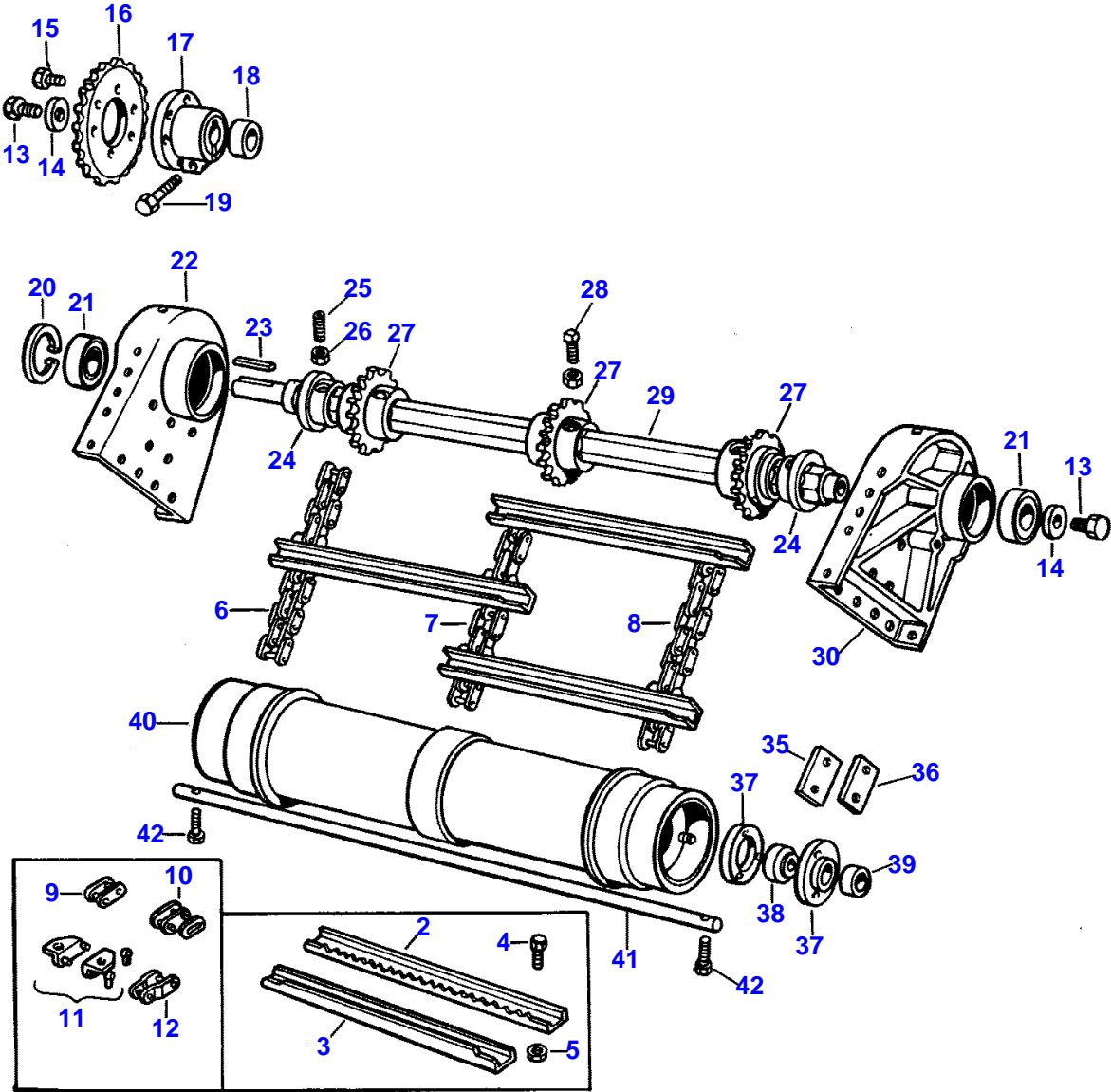
4/87

FEED HOUSING

Item	Part Number	Qty	Description
1	2527731W91	1	Housing Assembly, Feeder
2	2570220W1	1	Support, Top Feeder Shaft, Left
	2570230W1	1	Support, Top Feeder Shaft, Right
4	354276X1	8	Bolt (1/2 x 1-1/4" NC, Hex.)
5	355621X1	8	Washer (1/2" Flat)
6	1609200W1	1	Chain (18 Links)
7	1611180W1	1	Hook, Chain Snap
8		1	Chain, (Procure Locally)
12	2492021W1	1	Door Assy., Feeder
13	2324290W91	3	Retainer
14	355592X1	3	Nut (1/4" NC, Wing)
15	2488621W1	1	Plate Assy., Adjusting, Right
16	2513840W1	2	Plate, Locking
17	2488650W1	1	Block, Lock
18	2526550W1	1	Strip, Clamping (48")
19	2526540W1	1	Flap, Rubber (4 x 48")
20	2530741W91	1	Cover Assembly, Feeder Shaft
21	1820261W91	1	Latch Assembly (R.H.)
22	2605150W1	1	Strip, Wear
23	2605121W91	1	Frame Assembly, Feeder
24	2459820W1	1	Floor, Front Feeder
25	022807X	2	Pin (1/8 x 1" Roll)
26	355621X1	6	Washer (1/2" Flat)
27	1718230W1	2	Pin, Pivot
28	1820271W91	1	Latch Assembly (L.H.)
29	1681180W1	2	Spring, Latch (7- 51/64" Free Length)
33	1609121W91	1	Stand Assembly, Feeder
34	354734X1	1	Bolt (3/4 x 5" NC, Hex.)
35	2541981W91	2	Arm Assembly, Pivot
36	2541950W1	2	Bushing (25/32 x 1-1/2 x 51/64")
37	1575990W1	2	Eyebolt
38	2459750W1	1	Strip, Clamping (59")
39	2494510W1	1	Seal, Rubber (59-1/2")

10

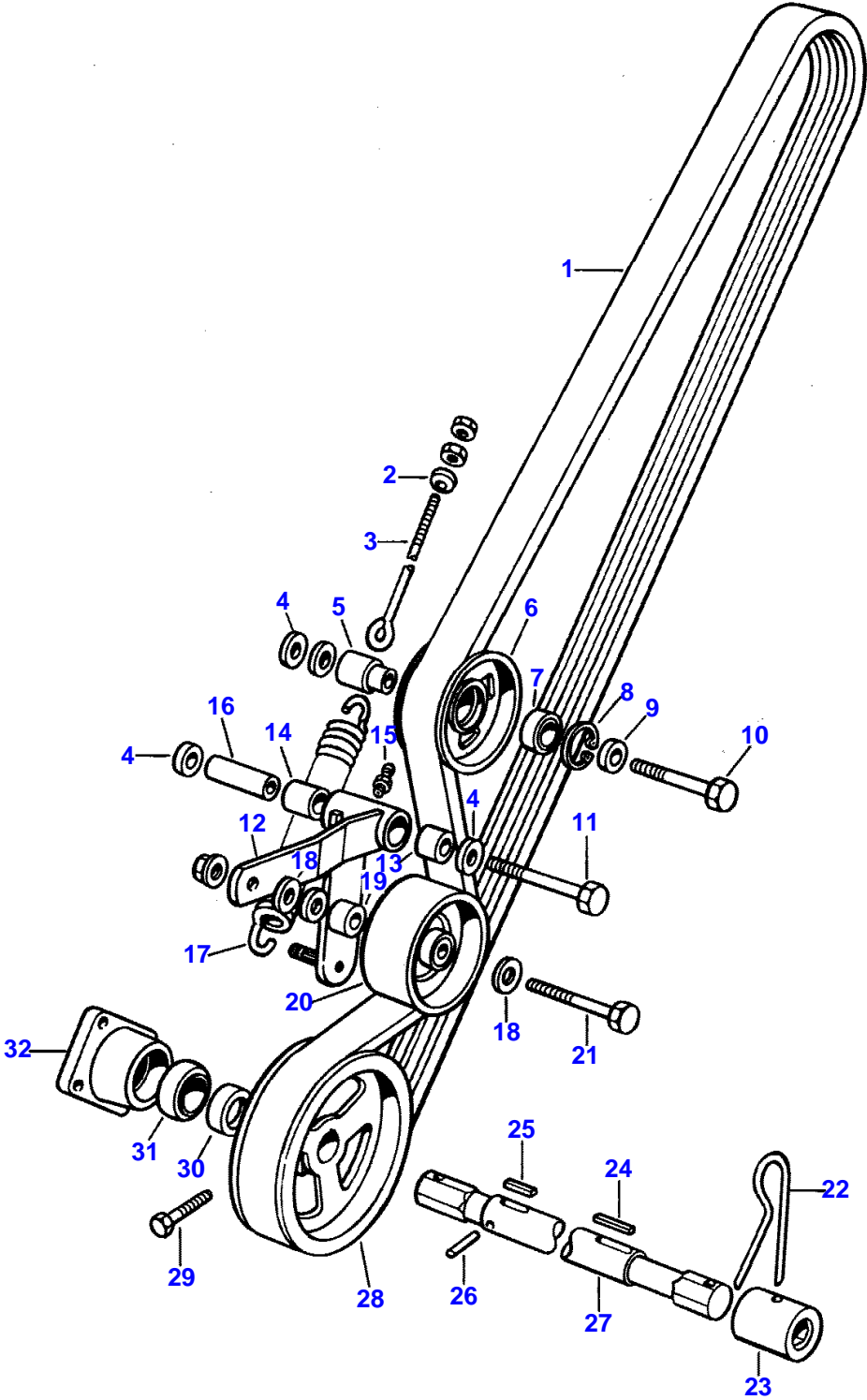
FEEDER CONVEYOR



Massey Ferguson
8590 ROTARY COMBINE
FEEDER CONVEYOR

Item	Part Number	Qty	Description
	2606263W91	1	Conveyor Assembly, Feeder (Plain) (Includes Items 3 Thru 12)
	2606273W91	1	Conveyor Assembly, Feeder (Serrated) (Includes Items 2 And 4 Thru 12)
2	2605530W1	24	Slat, Conveyor (Serrated)
3	2585230W1	24	Slat, Conveyor (Plain)
4	353677X1	96	Bolt (5/16 x 3/4" NC, Hex.)
8	364705X1	96	Nut (5/16" NC, Hex., Flange Lock)
6	2605543W91	1	Chain Assembly (R.H.)(96 Links) (Includes Items 9 Thru 12)
7	2585513W91	1	Chain Assembly, (Center)(96 Links) (Includes Items 9 Thru 12)
8	2585503W91	1	Chain Assembly, (L.H.)(96 Links)
9	2610250W1	AR	Link, Roller
10	2610270W1	AR	Link, Connecting
11	2610240W1	AR	Link, Attaching
12	2610260W1	AR	Link, Off-Set
13	356981X1	2	Bolt (7/8 x 1-1/2" NC, Hex.)
14	2403610W1	2	Washer (29/32 x 2-1/2 x 3/8")
15	353723X1	6	Bolt (1/2 x 1" NC, Hex.)
16	2547680W1	1	Sprocket, Conveyor Drive (35 Teeth)
17	2601550W1	1	Hub, Driven Sprocket
18	2547660W1	1	Spacer (2-5/64 x 2-3/8 x 31/32")
19	354653X1	1	Bolt (1/2 x 2-3/4" NC, Hex.)
20	355997X1	1	Ring, Snap, Bearing Retaining
21	9112370W1	2	Bearing (1-31/32 x 4-11/32 x 1-1/16")
22	2570230W1	1	Support, Top Feeder Shaft, Right
23	2528390W1	1	Key (1/2 Sq. x 2-1/2")
24	2605970W1	2	Hub, Feeder Shaft
25	354136X1	2	Screw (3/8 x 7/8" NC, Sckt. Hd. Set)
26	375109X1	2	Nut (3/8" NC, Half Hex.)
27	2570170W1	3	Sprocket, Top Feeder Shaft (12 Teeth)
28	353911X1	6	Screw (1/2 x 1" NC, Sq. Hd., Set)
29	2585140W1	1	Shaft, Top Feeder (68")
30	2570220W1	1	Support, Top Feeder Shaft, Left
35	1587160W1	4	Stop, Bottom Feeder Shaft (3-1/2 x 2 x 1")
36	1587180W1	4	Plate, Bolting
37	101161M1	4	Housing, Bearing
38	833351M1		Bearing, Ball W/Lock Collar
39		1	Collar, Bearing (Order 833351M1)
40	1809541W91	1	Drum Assembly, Conveyor
41	2498340W1	1	Shaft, Bottom (55-1/8")
42	354613X1	2	Bolt (5/16 x 2-1/4" NC, Hex.)

HEAD COUNTERSHAFT DRIVE



1 449 394 M1

MASSEY 8590 COMBINE

ISSUE 1

4/87

Buy Now



Our support email:

ebooklibonline@outlook.com