

Page Title	Page Number
TABLE	2
TABLE PLATES, SHIELDS AND DIVIDERS	5
AUGER	6
KNIFE	11
WOBBLE KNIFE DRIVE - USED TABLE {1} 1859032098	12
WOBBLE KNIFE DRIVE - USED TABLE {2} 1859032098	15
DRIVE, TABLE AND REEL	16
ELECTRIC VARIABLE SPEED REEL DRIVE	21
ELECTRICAL WIRING - VARIABLE SPEED DRIVE	22
REEL AND SUPPORTS	24
REEL LIFT HYDRAULICS	27
REEL HYDRAULICS, FORE AND AFT	28
HYDRAULICS - FORE AND AFT REEL CONTROL	31
HYDRAULIC MOTOR	32
HYDRAULIC PUMP AND RESERVOIR	35
HYDRAULIC CYLINDERS	36
HYDRAULIC CYLINDERS	39
ELEVATOR DRIVE	40
ELEVATOR SHAFTS AND DRIVES	43
ELEVATOR TABLE TO CYLINDER	44
ELEVATOR HOUSING REPAIR	47
TABLE ELEVATOR SHIELDS	48
SHIELD-LEFT SIDE - FRONT	51
ELEVATOR CLUTCHES - TOP SHAFT ELECTRIC	52
CYLINDER HOUSING	55
CYLINDER DRIVE	56
CYLINDER DRIVE	59
VARIABLE SPEED DRIVE CONTROL	63
CYLINDER (RASP-BAR) - HIGH INERTIA	64
CONCAVE (RASP-BAR)	67
CONCAVE CONTROL	68
STONE TRAP, FEED PLATE	71
FRONT BEATER	72
REAR BEATER	75
SHAKERSHOE	76
GRAIN PAN AND SHAKER SHAFT	79
SCREENS - SHAKER SHOE	80
STRAW WALKERS	83
STRAW WALKERS AND RETURNS ELEVATOR DRIVE	84
FANNING MILL	87
LEFT HAND DRIVE	88
LEFT HAND DRIVE IDLERS	91
GRAIN ELEVATOR	92
GRAIN ELEVATOR DRIVE	95
GRAIN TANK	96
GRAIN TANK UNLOADER TOP	99
GRAIN TANK UNLOADER BOTTOM	100
GRAIN TANK UNLOADER DRIVE	103
RETURNS ELEVATOR	107
RETURN ELEVATOR CARRIERS	108
HOOD	111
MAIN FRAME	112
FRONT AXLE AND WHEELS	115
MAIN DRIVE	116
TRACTION CLUTCH	119
VARIABLE SPEED TRACTION DRIVE - 4 SPEED TRANSMISSION	120
GEAR SHIFT - 4 SPEED	124
TRANSMISSION (4 SPEED)	127
HYDRAULIC CONTROLS	131
CONTROL BOX	132
FINAL DRIVE	135
TURNING BRAKES	136
BRAKE CYLINDER, BRAKE ASSEMBLY, RESERVOIR	139
PARKING BRAKE	140
A FRAME AND REAR AXLE	143
WALKER BODY	144

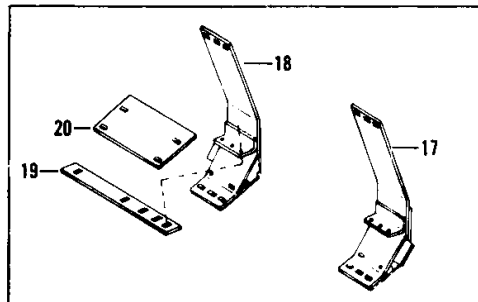
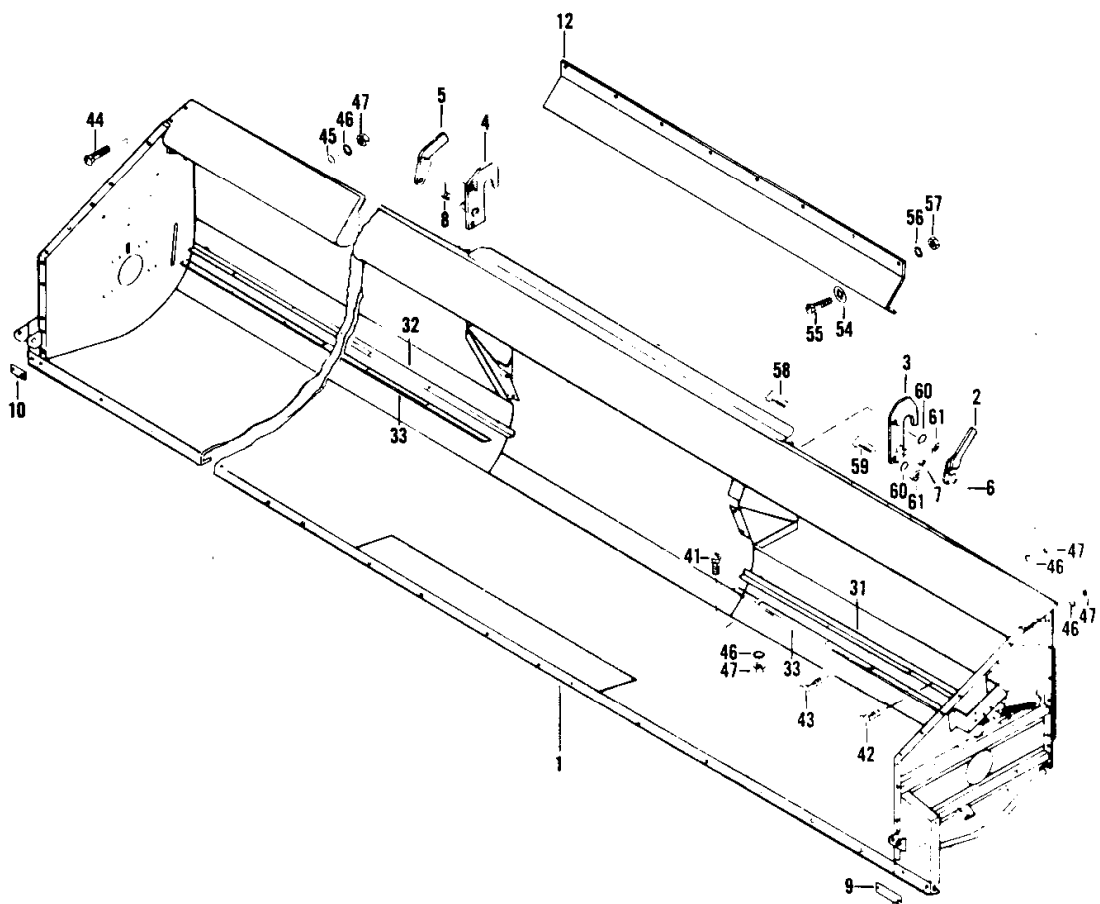
TABLE OF CONTENT

OPERATOR'S PLATFORM AND LADDER	147
SEAT	148
ENGINE COVER	151
ENGINE COVER EXTENSION	152
STEERING PEDESTAL	155
STEERING GEAR	156
INSTRUMENTS	159
GREASE HARNESS	160
ELECTRICAL WIRING	163
ELECTRICAL WIRING	164
ELECTRICAL WIRING - ROAD LIGHTS	167
LIGHTING - ROAD LIGHTS	168
FIELD LIGHTING KIT, CHOPPER ALARM - LIGHTING	171
LIGHTS	172
HOURMETER - WARNING HORN	175
TOOL BOX, FUEL TANK AND LINES	176
THROTTLE CONTROL, FUEL SHUT-OFF	179
TABLE LIFT	180
TANK UNLOADER HYDRAULICS	183
VARIABLE SPEED HYDRAULICS - 4 SPEED	184
HYDRAULIC PRESSURE AND RETURN LINES	187
STEERING HYDRAULICS	188
HYDRAULIC TANK	191
HYDRAULIC PUMP DRIVE AND ENGINE SUPPORTS	192
HYDRAULIC OIL PUMP	195
HYDRAULIC CONTROL VALVE - 4 SPEED	196
UNLOADER SPOUT CONTROLS	199
HYDRAULIC CYLINDER	200
HYDRAULIC CYLINDER	203
HYDROSTATIC STEERING PUMP AND CYLINDERS	204
UNLOADER CONTROL VALVE	207
AIR INTAKE	208
REAR MOTOR HOUSING	211
BELTS	212
CHAINS	215
CHAINS	216
CHAINS	219
CONVEYOR CHAINS	220
EMBLEMS AND LABELS	223
CYLINDER BLOCK - A6-372 DIESEL	224
PISTONS, RINGS AND RODS - A6-372 DIESEL	227
CRANKSHAFT & FLYWHEEL - A6-372 DIESEL	228
TIMING GEAR - A6-372 DIESEL	231
CYLINDER HEAD - A6-372 DIESEL	232
CYLINDER HEAD COVER - A6-372 DIESEL	235
OIL PAN, PUMP AND FILTER - A6-372 DIESEL	236
GASKET SETS	239
WATER PUMP - A6-372 DIESEL	240
MANIFOLDS	243
INJECTION SYSTEM - A6-372 DIESEL	244
FUEL INJECTION PUMP - A6-372 DIESEL	247
FUEL FILTER AND FUEL PUMP	248
AIR INTAKE AND EXHAUST - A6-372 DIESEL	251
RADIATOR, FAN, DRIVE - A6-372 DIESEL	252
PRE-CLEANER, PRE-SCREENER - EXTREME DUSTY CONDITIONS	255
ALTERNATOR	256
STARTER	259
SOLENOID	260
STRAW CHOPPER DRIVE	263
SHIELDS SUPPORTS	267
CAB - SHEET METAL, WINDOW'S	268
CAB - SEALING	271
COMPRESSOR, EVAPORATOR, CONDENSOR	272
AIR CONDITIONING LINES	275
AIR CONDITIONING LINES	276
PRESSURIZER	279
HEATER	280
HEATER	283

2

TABLE

1696 003-1



TABLE

Item	Part Number	Qty	Description	Comments
1	264456M91	1	Table	(A)
	261487M91	1	Table	(B)
2	262013M92	1	Cam	
3	261516M91	1	Plate	
4	261517M91	1	Plate	
5	262012M92	1	Cam	
6	363307X1	2	Pin	3/16 X 1-1/8"
7	261641M1	1	Spring	Left Hand
8	261640M1	1	Spring	Right Hand
9	369141X1	1	Plate	
10	369142X1	1	Plate	
12	264022M91	1	Cowl	
17	272131M92	1	Plate	Left Hand
18	272137M92	1	Plate	Right Hand
19	272141M1	2	Plate	
20	272142M1	2	Plate	
31	261534M1	1	Anglepiece	Left Hand
32	261535M1	1	Anglepiece	Right Hand
33	261488M1	2	Plate	
41	364352X1	X	Bolt Unc	
42	353677X1	X	Screw Unc	
43	353678X1	X	Screw Unc	
44	364533X1	X	Bolt	
45	353755X1	X	Washer	5/16"
46	353446X1	X	Lock Washer	5/16"
47	355565X1	X	Nut Unc	
54	49307X	X	Washer	7/16"
55	360513X1	X	Screw	
56	353434X1	X	Lock Washer	3/8"
57	355566X1	X	Nut Unc	
58	261006M1	X	Bolt	
59	363423X1	X	Bolt	
60	353433X1	X	Lock Washer	5/8"
61	375099X1	X	Nut Unc	
				(A)
				USED TABLE {1} 1859032098
				(B)
				USED TABLE {2} 1859032098

TABLE

1696 004-1

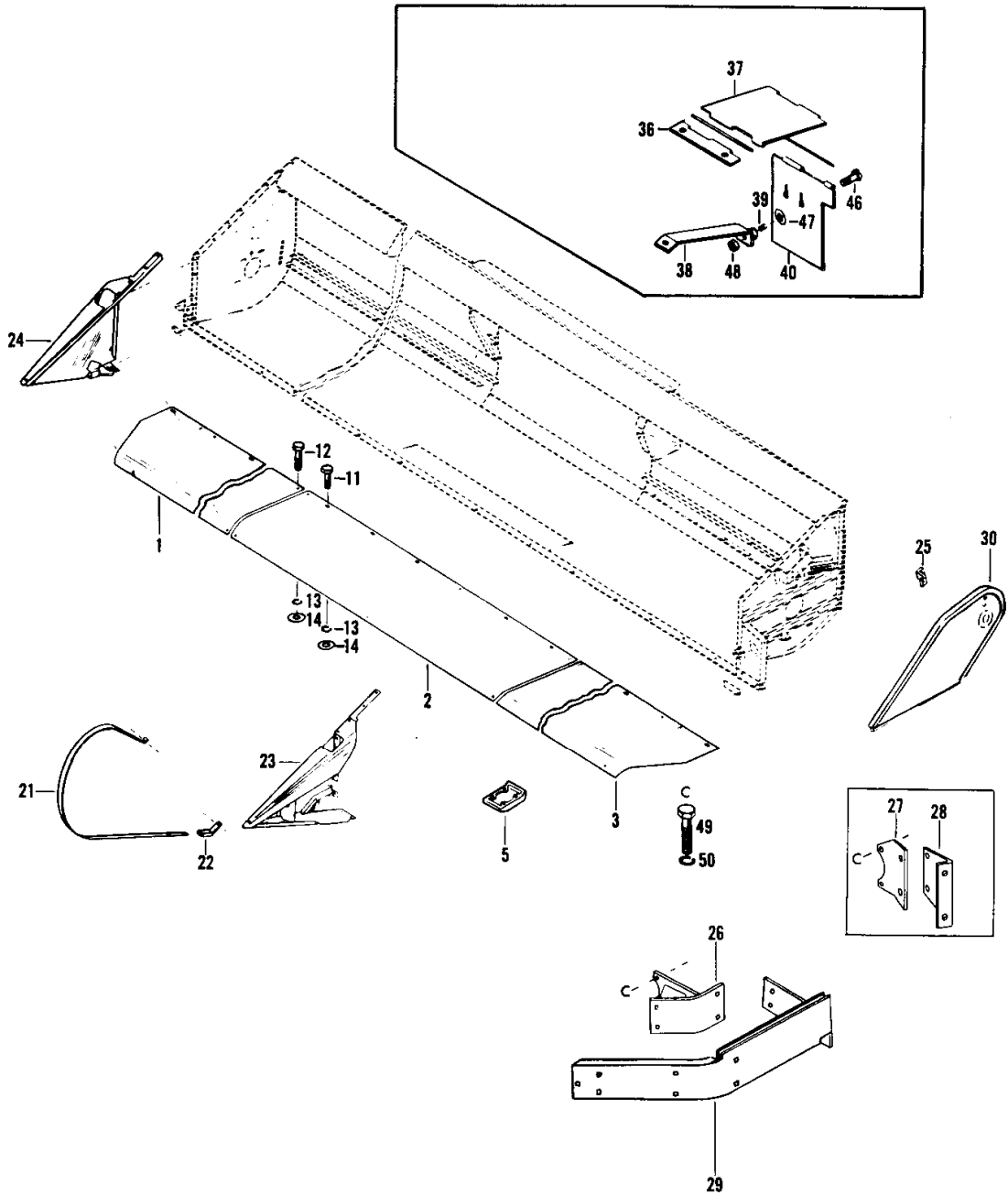


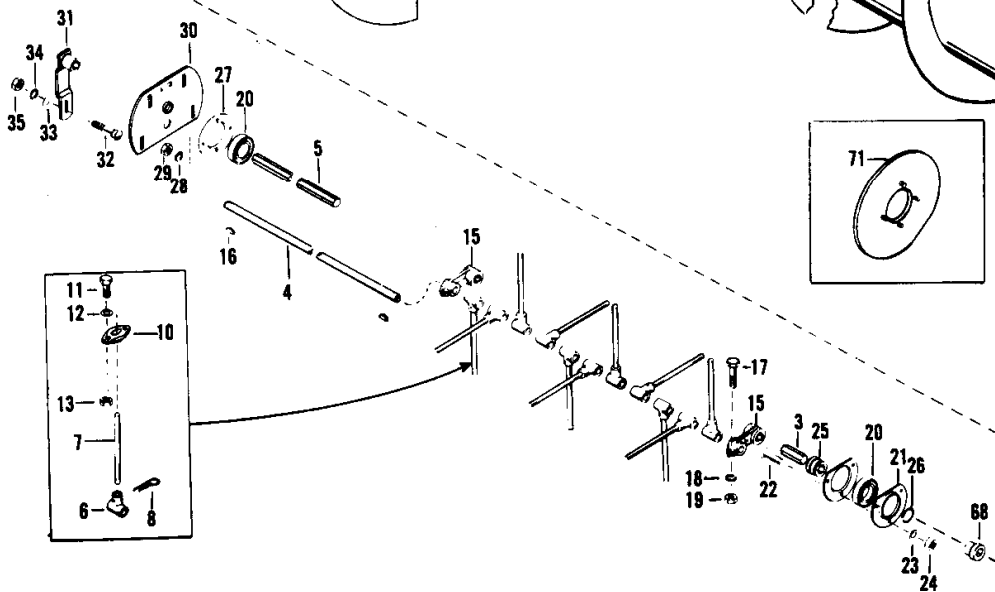
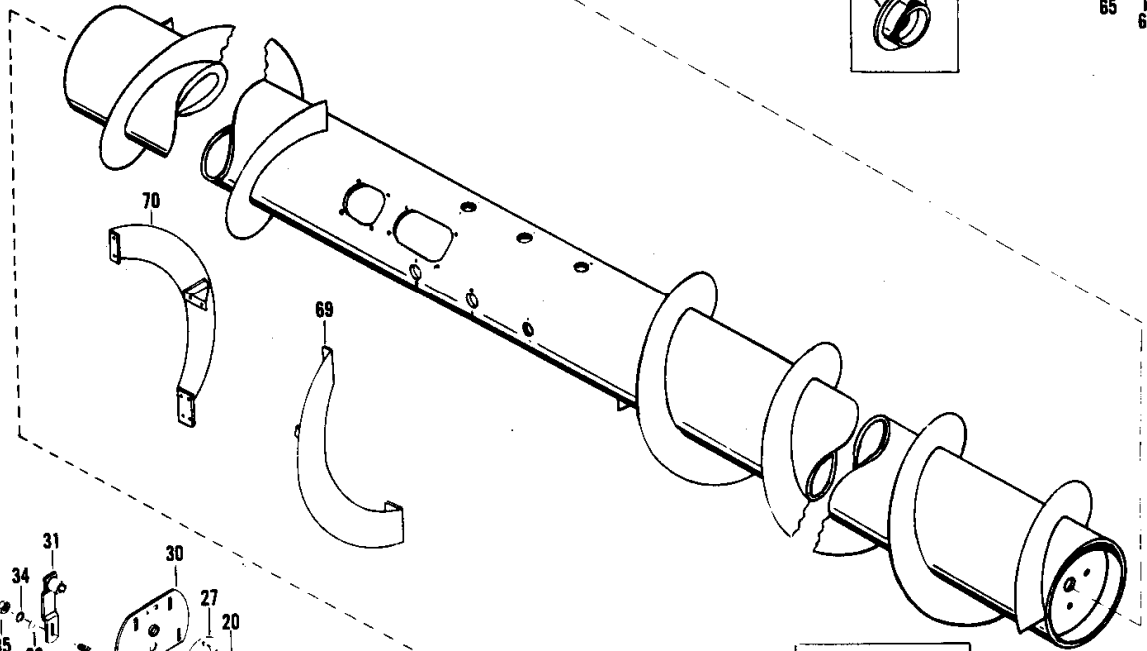
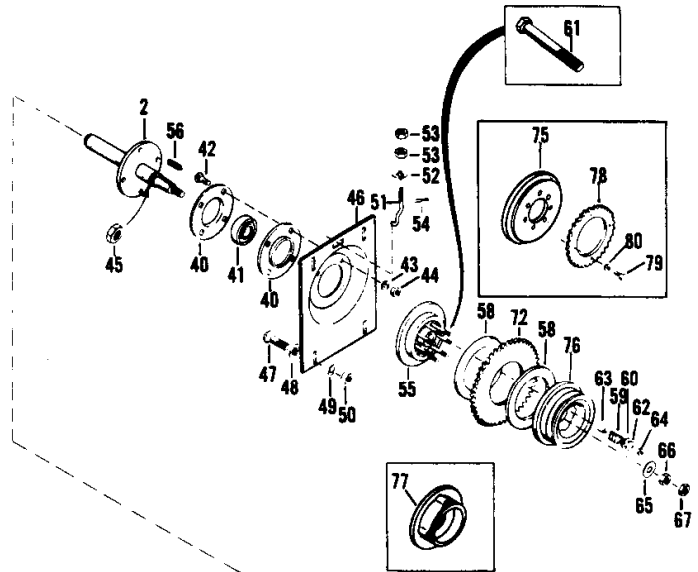
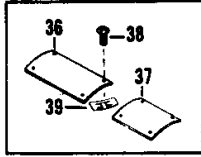
TABLE PLATES, SHIELDS AND DIVIDERS

Item	Part Number	Qty	Description	Comments
1	261564M91	1	Plate	Right Hand
2	261562M91	1	Plate	
3	261565M91	1	Plate	Left Hand
5	261568M1	7	Shoe	
11	353689X1	X	Screw Unc	
12	353691X1	X	Screw Unc	
13	353434X1	X	Lock Washer	3/8"
14	353756X1	X	Washer	3/8"
21	239746M1	2	Cowl	
22	236125M91	2	Bearer	
23	260683M94	1	Divider	Left Hand
24	260676M94	1	Divider	Right Hand
25	261408M1	1	Bearer	
26	264446M91	1	Support	(A)
27	261729M1	1	Bearer	(B)
28	261728M91	1	Bearer	(B)
29	261726M91	1	Cowl	
30	261409M91	1	Cowl	
36	261622M1	2	Hinge	
37	261623M1	2	Cowl	
38	261624M1	2	Bearer	
39	261625M1	2	Spring	
40	261626M1	2	Cowl	
46	355156X1	X	Screw Unc	
47	355618X1	X	Washer	5/16"
48	375108X1	X	Nut Unc	
49	353725X1	X	Bolt Unc	(A)
	353701X1	X	Screw Unc	(B)
50	353439X1	X	Lock Washer	(A) 1/2"
50	353432X1	X	Lock Washer	(B) 7/16" (A) USED TABLE {1} 1859032098 (B) Up to Serial or Engine Number 1859032098

6

AUGER

1696 005-2



AUGER

Item	Part Number	Qty	Description	Comments
	261527M93	1	Screw	
2	261456M91	1	Shaft	
3	261819M1	1	Shaft	33 - 1/4"
4	261820M1	1	Shaft	35 - 3/4"
5	261815M1	1	Shaft	78 - 1/8"
6	272130M2	16	Holder	
7	238797M2	16	Feather.Finger	
8	368770X1	16	Pin	
	836998M91	X	Guide	
10		1	Bolt	Not serviced, order 836998M91
11	353667X1	2	Screw Unc	
12	353754X1	4	Washer	1/4"
13	353656X1	2	Nut	
15	261467M1	2	Crank	
16	29254X	2	Key	3/16 X 1"
17	353679X1	4	Screw Unc	
18	353446X1	4	Lock Washer	5/16"
19	355565X1	4	Nut Unc	
20	831134M1	3	Bearing	
21	842049M1	2	Flange	
22	353689X1	6	Screw Unc	
23	353434X1	6	Lock Washer	3/8"
24	355566X1	6	Nut Unc	
25	261468M1	1	Collar	
26	350394X1	3	Ring	
27	842048M1	1	Flange	
28	353446X1	4	Lock Washer	5/16"
29	355565X1	4	Nut Unc	
30	261472M2	1	Plate	
31	261474M92	1	Arm	
	261527M93	1	Screw	
32	361325X1	1	Bolt	
33	353757X1	1	Washer	7/16"
34	353432X1	1	Lock Washer	7/16"
35	355645X1	1	Nut Unc	
36	243261M1	5	Cover	
37	231320M1	1	Cover	
38	368242X1	24	Screw	
39	365490X1	24	Nut	
40	22520X	2	Flange	
41	831861M1	1	Bearing	
42	365777X1	4	Bolt	
43	353439X1	4	Lock Washer	1/2"
44	375098X1	4	Nut Unc	
45	261471M1	1	Nut	
46	248397M3	1	Plate	
47	364352X1	8	Bolt Unc	
48	355802X1	8	Washer	
49	353446X1	8	Lock Washer	5/16"
50	355565X1	8	Nut Unc	
51	261724M1	2	Bolt	
52	365324X1	2	Washer	13/32 X 1-1/4 X 9/64"
53	355566X1	4	Nut Unc	
54	354057X1	2	Pin	1/8 X 3/4"
55	234776M2	1	Hub	
56	10733X	1	Key	5/16" X 1 - 3/4"
58	GK5034	2	Washer	
59	230249M1	7	Spring	
60	GB1318	7	Washer	
61	353898X1	7	Screw	
62	353756X1	7	Washer	3/8"
63	263998M1	7	Spacer	Length 13/16"
	263918M1	7	Spacer	Length 7/8"
				Not serviced, order 263998M1
64	357557X1	7	Nut	
65	353774X1	1	Washer	5/8"
66	375099X1	1	Nut Unc	
67	375112X1	1	Nut Unc	
68	261741M1	2	Collar	

AUGER

Item	Part Number	Qty	Description	Comments
69	261479M93	2	Extension	Left Hand
70	261484M93	2	Extension	Right Hand
72	361211X1	1	Pinion	Number of teeth/spines 41
72	361213X1	1	Pinion	Number of teeth/spines 49
75	470326M1	1	Hub	
76				
77				
78	363827X1	1	Pinion	5/8" Number of teeth/spines 33
79	353679X1	4	Screw Unc	
80	353446X1	4	Lock Washer	5/16"

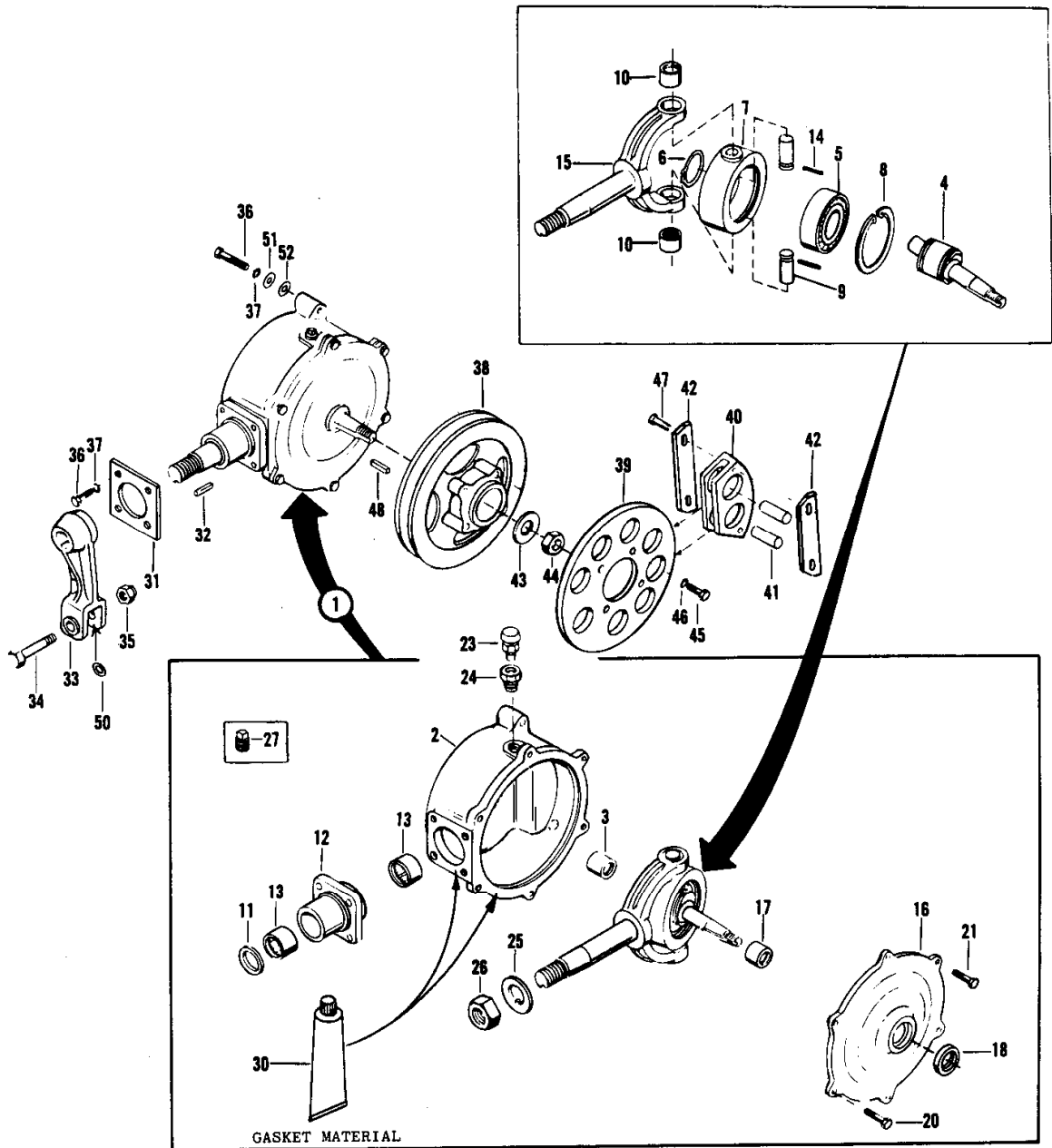
KNIFE

Item	Part Number	Qty	Description	Comments
1	260623M93	1	Knife	
2	239481M92	1	Head	
3	833083M1	1	Bearing Needle	
4	239242M1	1	Roller	
5	831225M1	2	Seal	
6	13811X	1	Grease	Not serviced, order 1900487M92
7	261300M1	1	Spring	
8	29140X	3	Rivet	1/4 X 7/8" Not serviced, order 480835M91
9	29142X	2	Rivet	1/4 X1 - 1/8"
10	363938X1	8	Rivet	.208 X 1" Not serviced, order 480839M91
11	261431M1	63	Section	.083"
12	261429M1	1	Section	.083"
14	261430M1	1	Section	.083"
16	362038X1	122	Rivet	13/64 X 37/64" Not serviced, order 480831M91
20	228392M1	32	Finger	
21	240888M1	1	Bearer	
22	366735X1	2	Spacer	7/8 X 13/32"
23	231303M1	15	Guide	
24	206195M1	14	Clip	
25	260803M2	1	Anglepiece	
26	366816X1	X	Shim	.010"
	366817X1	X	Shim	.024"
30	364954X1	X	Bolt	
31	353446X1	X	Lock Washer	5/16"
32	355565X1	X	Nut Unc	
33	364964X1	X	Bolt Unc	
34	364965X1	X	Bolt Unc	
35	363906X1	X	Bolt Unc	
36	355566X1	X	Nut Unc	

12

WOBBLE KNIFE DRIVE

1696 252

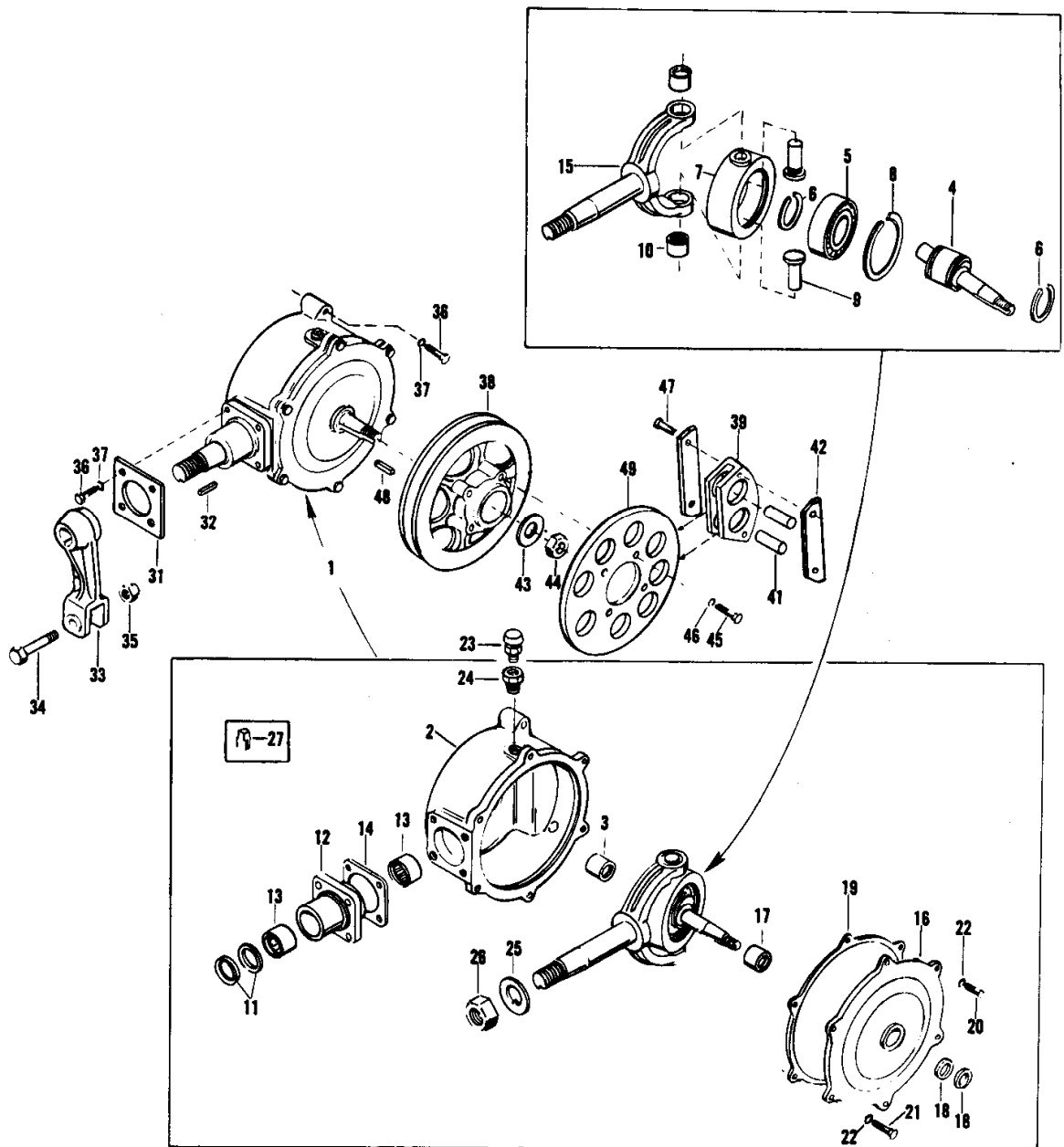


Item	Part Number	Qty	Description	Comments
				USED TABLE {1} 1859032098
1	264487M91	1	Drive	
2	264418M1	1	Housing	
3	843277M1	1	Bearing	
4	264416M1	1	Shaft	
5	843278M1	1	Bearing Assy	
6	355919X1	1	Snpring	
7	264422M1	1	Housing	
8	369864X1	1	Circlip	
9	264423M1	2	Pin	
10	832389M1	2	Bearing	
11	843279M1	1	Seal	
12	264421M1	1	Housing	
13	831415M1	2	Bearing	
14	360993X1	2	Pin	3/16 X 2"
15	264415M1	1	Yoke	
16	264419M1	1	Cover	
17	843276M1	1	Bearing	
18	831145M1	1	Seal	
20	353690X1	1	Screw Unc	
21	353691X1	5	Screw Unc	
23	182099M91	1	Breather	
24	362007X1	1	Reducer	
25	369863X1	1	Washer	1 - 1/32 X 2 - 3/8 X 5/64"
26	355646X1	1	Nut Unf	
27	375181X1	1	Plug	3/8"
30	1095024M1	X	Gasket	
31	264435M1	1	Shim	.060"
32	369861X1	1	Key Parallel	3/8 X 1-5/8"
33	264417M1	1	Arm	
34	369862X1	1	Screw Unf	
35	357561X1	1	Nut Unf	
36	353725X1	6	Bolt Unc	
37	353439X1	4	Lock Washer	1/2"
38	264442M1	1	Pulley	
39	264443M1	1	Plate	
40	261446M1	4	Weight	
41	261345M2	8	Pin	
42	261346M1	8	Plate	
43	364490X1	1	Washer	1 - 1/32 X 1 - 7/8 X 3/16"
44	358799X1	1	Nut	
45	353693X1	4	Screw Unc	
46	353434X1	4	Lock Washer	3/8"
47	261614M1	16	Screw	
48	369860X1	1	Key Parallel	5/16" X 1-5/16"
50	370662X1	1	Washer	1-9/32 X 1-3/4 X 3/32"
51	367127X1	2	Washer	17/32 X 7/8 X .060"
52	368049X1	2	Shim	5/8 X 1 X .020"

WOBBLE KNIFE DRIVE

15

1696 008



Buy Now



Our support email:

ebooklibonline@outlook.com