

Page Title	Page Number
ENGINE AND ACCESSORIES - UP TO SERIAL 11-1981	1
ENGINE AND ACCESSORIES - FROM 12-1981	2
CYLINDER BLOCK	3
CRANKSHAFT, PISTONS AND CONNECTING RODS - AD3.152 ENGINE	4
CYLINDER HEAD - AD3.152 ENGINE	5
ROCKER SHAFT - AD3.152 ENGINE	6
AIR INDUCTION AND EXHAUST SYSTEM - AD3.152 ENGINE	7
TIMING GEAR AND CAMSHAFT - AD3.152 ENGINE	8
LUBRICATING OIL SUMP - AD3.152 ENGINE	9
LUBRICATING OIL FILTER AND INTEGRAL COOLER - AD3.152 ENGINE	10
WATER PUMP, THERMOSTAT AND HEAT EXCHANGER	11
FUEL OIL LIFT PUMP - AD3.152 ENGINE	12
FUEL INJECTION EQUIPMENT (DIESEL) - AD3.152 ENGINE	13
JOINTS AND GASKETS - AD3.152 ENGINE	14
BATTERY	15
BATTERY	16
BATTERY	17
GENERATOR-DUCELLIER - UP TO SERIAL 11-1981	18
GENERATOR-PARIS RHONE - UP TO SERIAL 11-1981	19
ALTERNATOR-LUCAS - FROM SERIAL S165043	20
GUARDS PTO AND ALTERNATOR	21
ALTERNATOR POSITIONER - ENGINE- FROM 12-1981	22
STARTER-DUCELLIER	23
STARTER-DUCELLIER	24
STARTER-LUCAS	25
STARTER-PARIS RHONE	26
RADIATOR	27
FAN	28
FUEL TANK AND ATTACHMENTS	29
FUEL FILTERS AND PIPES	30
FUEL FILTER	31
AIR FILTER	32
EXHAUST SYSTEM	33
HAND THROTTLE CONTROL	34
THROTTLE CONTROLS	35
SINGLE CLUTCH	36
DUAL CLUTCH	37
CLUTCH PEDAL AND LINKAGE - UP TO SERIAL NUMBER	38
CLUTCH PEDAL AND LINKAGE - FROM SERIAL NUMBER	39
CLUTCH PEDAL AND LINKAGE - CATCH PEDAL- FROM SERIAL NUMBER	40
8 SPEED SYNCHROMESH TRANSMISSION-HOUSING	41
8 SPEED SYNCHROMESH TRANSMISSION-CONTROL	42
8 SPEED SYNCHROMESH TRANSMISSION-MAIN SHAFT	43
SYNCHRO	44
8 SPEED SYNCHROMESH TRANSMISSION-COUNTERSHAFT	45
8 SPEED SYNCHROMESH ZF TRANSMISSION-HOUSING	46
8 SPEED SYNCHROMESH TRANSMISSION-SHIFT CONTROL - SYNCHRO-	47
8 SPEED SYNCHROMESH ZF TRANSMISSION-FORK AND GEARSHIFT RAIL	48
8 SPEED SYNCHROMESH ZF TRANSMISSION-MAIN SHAFT	49
8 SPEED SYNCHROMESH ZF TRANSMISSION-SYNCHROMESH	50
8 SPEED SYNCHROMESH ZF TRANSMISSION-COUNTER SHAFT	51
EPICYCLIC UNIT-NORMAL DUTY	52
PTO SHAFT - WITH IPTO	53
PTO SHAFT - LIVE PTO	54
PTO-CONTROL - WITH INDEPENDANT P.T.O	55
PTO-CONTROL	56
IPTO-PIPES AND COVER	57
IPTO-CLUTCH AND VALVES	58
IPTO-CLUTCH AND VALVES - UP TO SERIAL NO	59
IPTO-CLUTCH AND VALVES - FROM SERIAL NUMBER	60
REAR AXLE-SPACER	61
REAR AXLE CENTRE HOUSING	62
REAR AXLE-ATTACHMENTS	63
REAR AXLE-DIFFERENTIAL	64
REAR AXLE-DIFFERENTIAL	65
REAR AXLE-DIFFERENTIAL LOCK MECHANISM	66

TABLE OF CONTENT

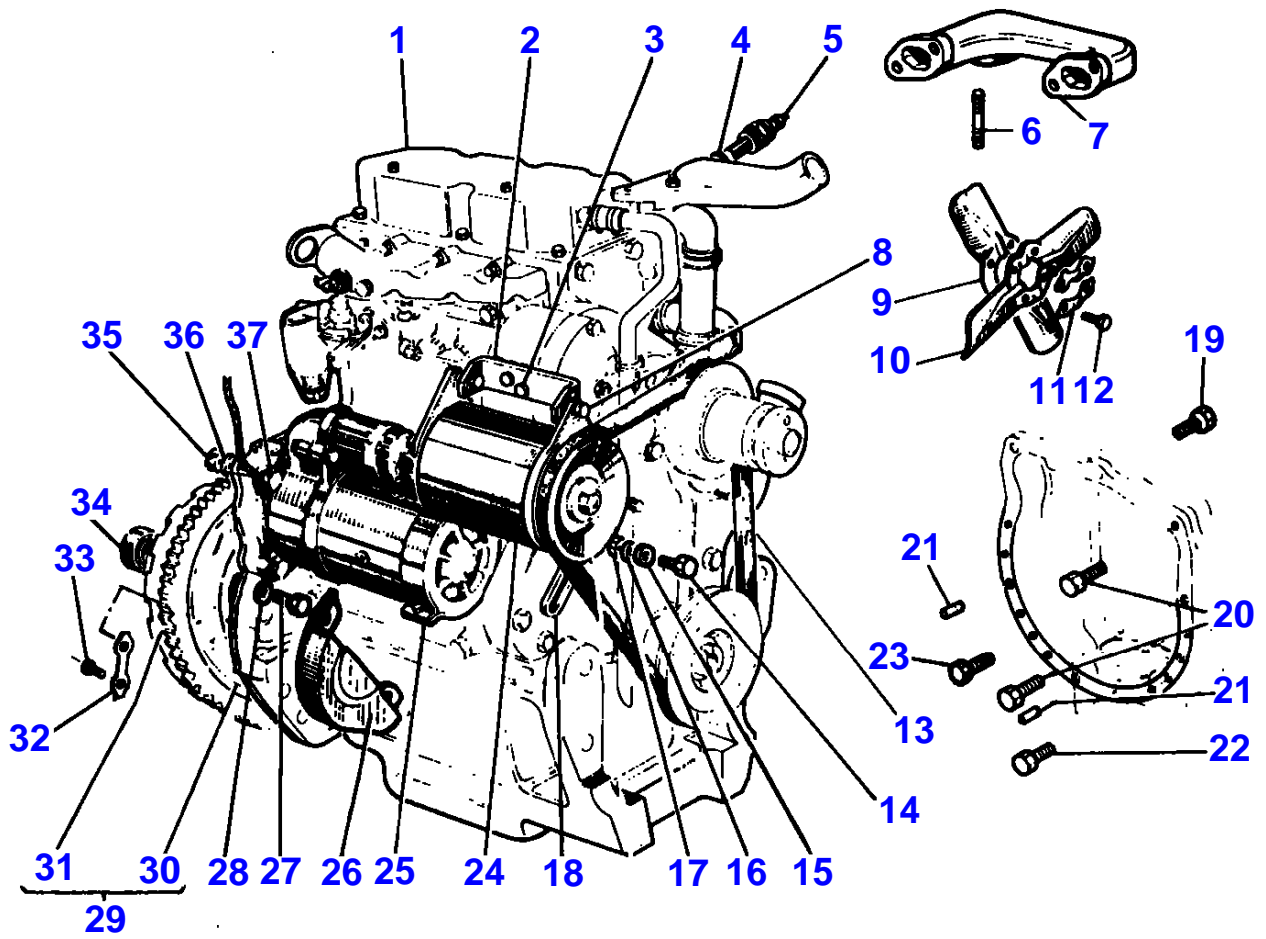
REAR AXLE- DIFFERENTIAL LOCK PEDAL - FROM SERIAL NUMBER	67
REAR AXLE-HOUSING	68
DISC BRAKES - 3 DISC	69
BRAKE PEDALS AND LINKAGE	70
BRAKE PEDALS AND LINKAGE - UP TO SERIAL NUMBER	71
BRAKE PEDALS AND LINKAGE - FROM SERIAL NUMBER	72
BRAKE PEDALS AND LINKAGE - FROM SERIAL DU 10/1981- WITH HANDBRAKE	73
REAR WHEELS	74
REAR WHEELS - UP TO SERIAL NO K.315001	75
REAR WHEELS - FROM SERIAL NO K.315002	76
POWER ASSISTED VARIABLE TRACK WHEEL	77
POWER ASSISTED VARIABLE TRACK WHEEL	78
POWER ASSISTED VARIABLE TRACK WHEEL	79
FRONT WHEELS	80
FRONT AXLE - WHEEL HUB	81
FRONT AXLE	82
AXLE SUPPORT - UP TO SERIAL NO	83
AXLE SUPPORT - FROM SERIAL NUMBER	84
STEERING WHEEL	85
STEERING GEAR - BOX	86
STEERING GEAR	87
STEERING GEAR	88
STEERING LINKAGE	89
BREATHING FILTER	90
HYDRAULICS - WITHOUT BREATHING FILTER	91
HYDRAULIC PUMP DRIVE	92
HYDRAULIC PUMP-DUAL-AIR EQUIPMENT	93
HYDRAULIC PUMP-DUAL-AIR EQUIPMENT	94
HYDRAULIC PUMP-DUAL-AIR EQUIPMENT	95
INTERNAL LINES - AUXILIARY HYDRAULIC	96
INTERNAL LINES - AUXILIARY HYDRAULIC- WITH BREATHING FILTER	97
INTERNAL LINES - 8 SPEED - 12 SPEED	98
INTERNAL LINES - WITH AUXILIARY PUMP	99
OIL FILTER	100
OIL FILTER - PIPE- UP TO SERIAL NO...	101
HYDRAULIC LINE - MICRONIC FILTRATION- - WITHOUT OIL COOLER- FROM SERIAL NUMBER	102
DISTRIBUTOR - KONTAK	103
DISTRIBUTOR - KONTAK-DELIVERY	104
HYDRAULIC PUMP-BODY SHAFT PISTON	105
HYDRAULIC PUMP-BODY SHAFT PISTON - LOW FLOW-WITHOUT AUXILIARY PUMP- WITHOUT PRESSURE MODULATION-WITHOUT SIDE PTO	106
HYDRAULIC PUMP-OSCILLATOR VALVE	107
HYDRAULIC PUMP-STRAINER UNIT	108
HYDRAULIC PUMP-STRAINER UNIT - WITHOUT PRESSURE MODULATION- MARK III	109
HYDRAULIC PUMP-STRAINER UNIT - WITH BREATHING FILTER	110
HYDRAULIC PUMP-PRESSURE CONTROL VALVE	111
HYDRAULIC LIFT COVER	112
DRAFT AND POSITION CONTROLS	113
QUADRANT AND CONTROL LEVERS - CONTROL SHAFT	114
RESPONSE CONTROLS	115
LIFT ARMS	116
LIFT ARMS - RAM-UP TO 12-81	117
LIFT ARMS - RAM-FROM 12-81	118
LIFT ARMS - DRAFT AND POSITION CONTROLS	119
TOP LINKS - UPPER LINK-SCALE	120
LOWER LINKS - LEVELLING BOX	121
LOWER LINKS - BOTTOM BAR	122
LOWER LINKS - CHAIN	123
LOWER LINKS - STAY-HITCH BAR	124
FRONT HITCH	125
SHEET METAL-GRILLE	126
SHEET METAL-HOOD	127
SHEET METAL-INSTRUMENT PANEL	128
SHEET METAL-INSTRUMENT PANEL - INSTRUMENT CHROME- UP TO SERIAL	129
SHEET METAL-INSTRUMENT PANEL - INSTRUMENT BLACK- FROM SERIAL	130
SHEET METAL-INSTRUMENT PANEL - INSTRUMENTS	131
SHEET METAL-SHEEL FENDERS	132
SAFETY FRAME	133
FOOTSTEP	134

TABLE OF CONTENT

00

SEAT-SABLE - UP TO SERIAL NO J251044	135
SEAT-SABLE	136
SEAT-BOSTROM - XL BALTIC	137
SEAT-BOSTROM - XH BALTIC	138
TRANSFERS	139
SPEED CHARTS	140
WIRING - ENGINE- FROM 12-1981	141
WIRING - FROM SERIAL NO J215046	142
WIRING	143
REAR LIGHTING EQUIPMENT - SIGNALLING	144
ELECTRICAL WIRING - HORN	145
FRONT LIGHTING EQUIPMENT	146
REAR LIGHTING EQUIPMENT - WORKING LIGHT	147
REAR LIGHTING EQUIPMENT - LICENSE PLATE	148

1 - 0010 - 020



MASSEY FERGUSON

MF 152 MKIII/152 F TRACTORS - 1637073

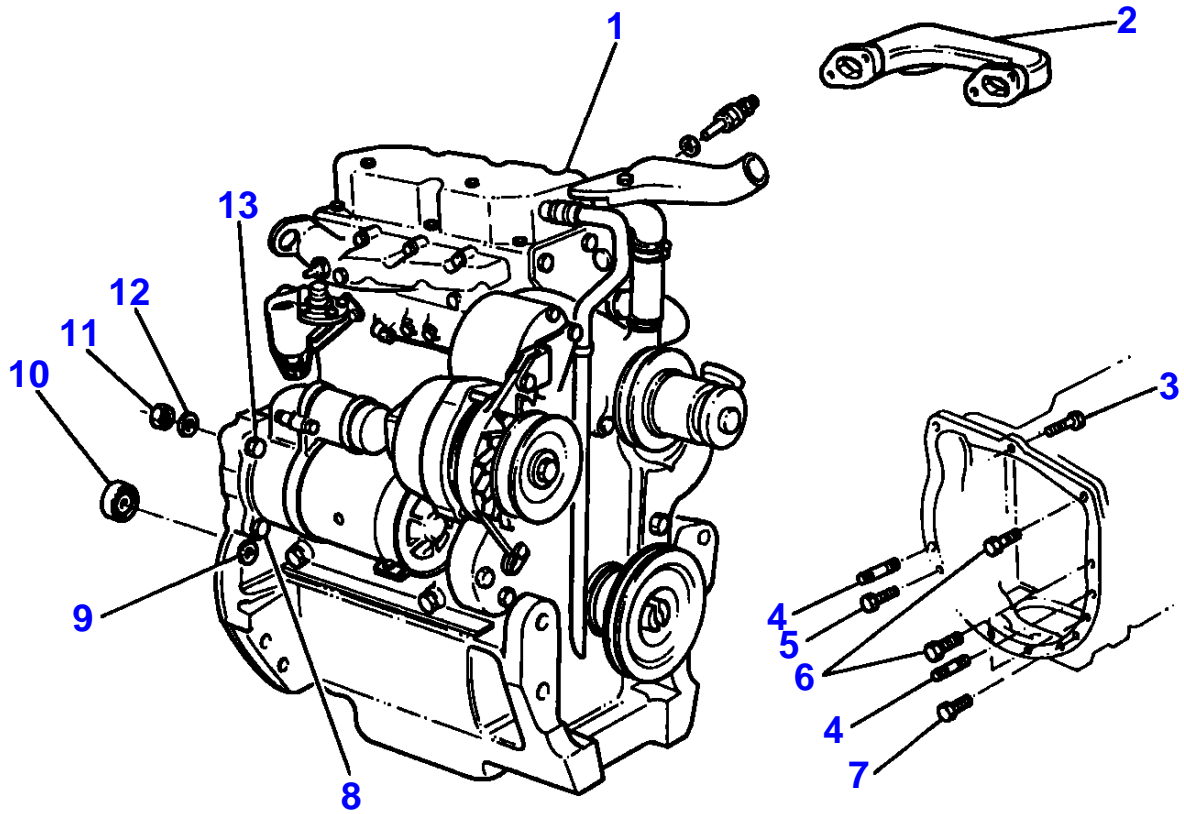
1637073

ENGINE AND ACCESSORIES - UP TO SERIAL 11-1981

1

Item	Part Number	Qty	Description	Comments
				UP TO SERIAL 11-1981
1	1808124M3	1	Engine	AD3.152 PEL - CE21690
2	962180M1	1	Bearer	
3	353690X1	2	Screw Unc	
	353756X1	2	Washer	
	353434X1	2	Lock Washer	
4	2411157	1	Washer	
5	963418M1	1	Gauge	
6	0826403	3	Stud	
7	37781341	1	Exhaust Manifold	
8	353521X1	2	Bolt Unf	
	353916X1	2	Nut Unf	
	353446X1	2	Lock Washer	
9	963929M1	1	Blade Fan	
10	963930M1	1	Blade Fan	
11	897057M1	2	Brake	
12	361444X1	4	Screw	
13	962184M2	1	Belt	
14	353521X1	1	Bolt Unf	
15	353446X1	1	Lock Washer	
16	353755X1	1	Washer	
17	353916X1	1	Nut Unf	
18	962181M1	1	Lever	
19	362479X1	1	Screw	
20	362491X1	2	Screw	
21	191314M1	2	Centraliser	
22	362499X1	8	Screw	
23	353710X1	1	Bolt Unc	
24		1	Dynamo	See Page - Reference Number 18/001
		1	Dynamo	See Page - Reference Number 19/001
25		1	Startermotor	See Page - Reference Number 23/001
		1	Startermotor	See Page - Reference Number 26/001
26	892639M92	1	Cowl	
27	362501X1	2	Screw	
28	353432X1	2	Lock Washer	
29	41112797	1	Flywheel	
30		1	Flywheel	(29) Not serviced, order REF NO 29
31	0410236	1	Starter Ring	(29)
32	0921062	3	Tab Washer	
33	32162203	6	Screw	
34	828123M1	1	Bearing Assy	
35	363625X1	1	Nut	
36	353432X1	1	Lock Washer	
37	361773X1	1	Screw	

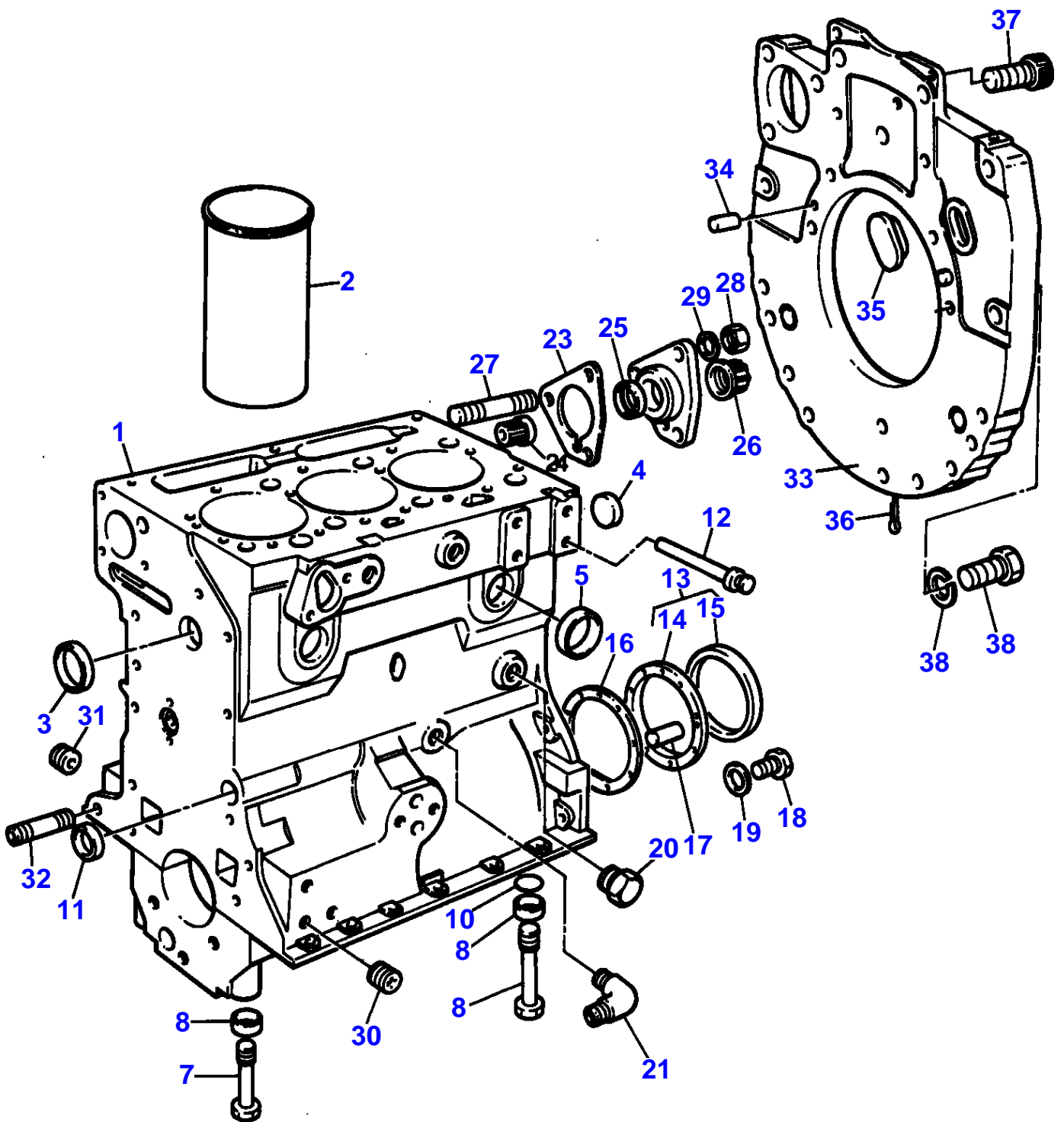
1-0010-084



MASSEY FERGUSON**MF 152 MKIII/152 F TRACTORS - 1637073****1637073****ENGINE AND ACCESSORIES - FROM 12-1981****2**

Item	Part Number	Qty	Description	Comments
				FROM 12-1981
1	1808124M3	1	Engine	AD3.152 PEL - CE21690
2	37781341	1	Exhaust Manifold	Repairs and replaces 734874M1
3	362479X1	1	Screw	
4	191314M1	2	Centraliser	Repairs and replaces 825302M1
5	353710X1	1	Bolt Unc	
6	362491X1	2	Screw	
7	362499X1	8	Screw	
8	362501X1	2	Screw	
9	353432X1	2	Lock Washer	
10	828123M1	1	Bearing Assy	
11	363625X1	1	Nut	
12	353432X1	1	Lock Washer	
13	361773X1	1	Screw	

C-0560-17M - A



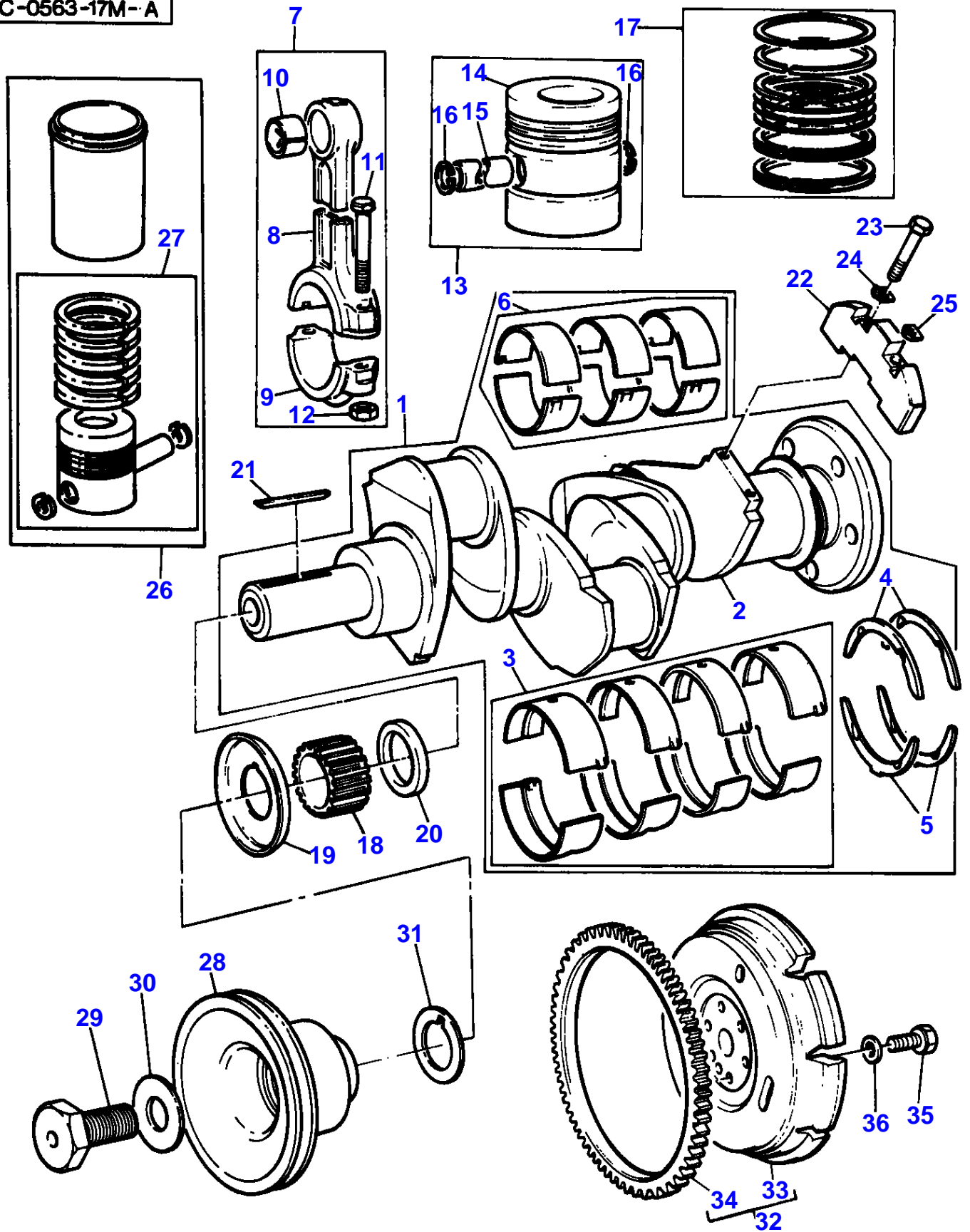
CYLINDER BLOCK

Item	Part Number	Qty	Description	Comments
1	ZZ 50170	1	Kit,Cyl.Block	Repairs and replaces ZZ50107 Repairs and replaces U5BA0008
2	31358323	3	Liner	(1) (A)
2	31358345	X	Liner	(B)
	31358384	X	Liner	0.010"0,25MM O/S
2	31358357	X	Liner	0.030"0,76MM O/S
3	0650710	1	Plug	(1)
4	0650664	1	Plug	(1)
5	0650563	4	Plug	(1)
6	33137408	6	Thimble	(1)
7	32181441	6	Screw	(1)
8	33137408	2	Thimble	(1)
9	32181442	2	Screw	(1)
10	2415608	2	O Ring	(1)
11	0650566	2	Plug	(1)
12	2485A204	1	Plug	(1)
13	4142V002	1	Housing	
14		1	Housing	(13) Not serviced, order REF.13
15	2418F475	1	Seal	(13)
16	33826111	1	Joint	
17	0350015	2	Dowel	
18	0746255	9	Setscrew	
19	0920003	9	Washer	
20	32161114	1	Plug	
21	37732901	1	Elbow	Up to Serial or Engine Number U726816K
	0201568	1	Connection	From Serial or Engine Number U726817K
22	37416751	1	Housing	
23	36862511	1	Joint	
24	33473106	1	Connection	
25	30854	1	Seal	
26	32813106	1	Cap Nut	
27	0826201	3	Stud	
28	0576002	3	Nut	
29	0920053	3	Washer	
30	32114471	1	Plug	
31	32114471	1	Plug	
32	32526512	1	Stud	
33	37147974	1	Plate	
34	0350016	2	Dowel	
35	37813113	1	Plug	
36	0610045	1	Pin	
37	0720798	2	Screw	
38	0746454	6	Setscrew	
39	0920054	6	Washer	

(A)
PRESS FIT

(B)
SLIP FIT

C-0563-17M--A



CRANKSHAFT, PISTONS AND CONNECTING RODS - AD3.152 ENGINE

Item	Part Number	Qty	Description	Comments
				AD3.152 ENGINE
1	ZZ 90078	1	Kit, Crankshaft	Repairs and replaces ZZ90122 Repairs and replaces U5BG0027 Repairs and replaces ZZ90019
2		1	Crankshaft	(1) Not serviced, order REF.1
3	68084	X	Kit, Bearing	(A)
	68084A	X	Kit, Bearing	(A) Thickness (-)0.25MM Thickness (-)0.010"
3	68084B	X	Kit, Bearing	(A) Thickness (-)0.50MM Thickness (-)0.020"
3	68084C	X	Kit, Bearing	(A) Thickness (-)0.75MM Thickness (-)0.030"
4	31137211	2	Thrust Washer	(1)
	31137212	X	Washer	Thickness (+)0.19MM Thickness (+)0.0075"
5	31137221	2	Thrust Washer	(1)
	31137222	X	Washer	Thickness (+)0.19MM Thickness (+)0.0075"
6	85036	1	Kit, Bearing	(1) (A)
6	85036A	X	Kit, Bearing	(A) Thickness (-)0.25MM Thickness (-)0.010"
6	85036B	X	Kit, Bearing	(A) Thickness (-)0.50MM Thickness (-)0.020"
6	85036C	X	Kit, Bearing	(A) Thickness (-)0.75MM Thickness (-)0.030"
7	ZZ 90010	1	Kit, Conrod	Repairs and replaces 91051 Repairs and replaces M7BJ0014
8		1	Conrod	(7) Not serviced, order REF.7
9		1	Cap	(7) Not serviced, order REF.7
10	31134151	1	Bush	(7)
11	0095250	2	Bolt	(7)
12	33221327	2	Nut	(7)
13	68302	3	Kit, Piston	(B)
	89214	3	Kit, Piston	(C)
14		1	Piston	(13) Not serviced, order REF.13
15		1	Pin	(13) Not serviced, order REF.13
16	0170001	2	Circlip	(13)
17	41158065	3	Kit, Piston Ring	
18	0410132	1	Gear,Crankshaft	25T
19		1	Washer	(F)
20	0330811	1	Spacer	
21	36271704	1	Woodruff Key	
22	31328242	2	Weight	(G)
23	2185189	4	Screw	
24	31731515	2	Washer	
25	31731516	2	Washer	
26	U5MK0117	X	Kit, Cylinder	(D)
	U5MK0059	X	Kit, Cylinder	(E)
27	U5PR0002	1	Kit, Piston	(3) (C)
28	31143733	1	Pulley,Crank	
29	32162312	1	Screw	
30	33125112	1	Washer	
31	33176137	1	Washer	
32	41112797	1	Flywheel	
33		1	Flywheel	(32) Not serviced, order REF.32

MASSEY FERGUSON**MF 152 MKIII/152 F TRACTORS - 1637073**

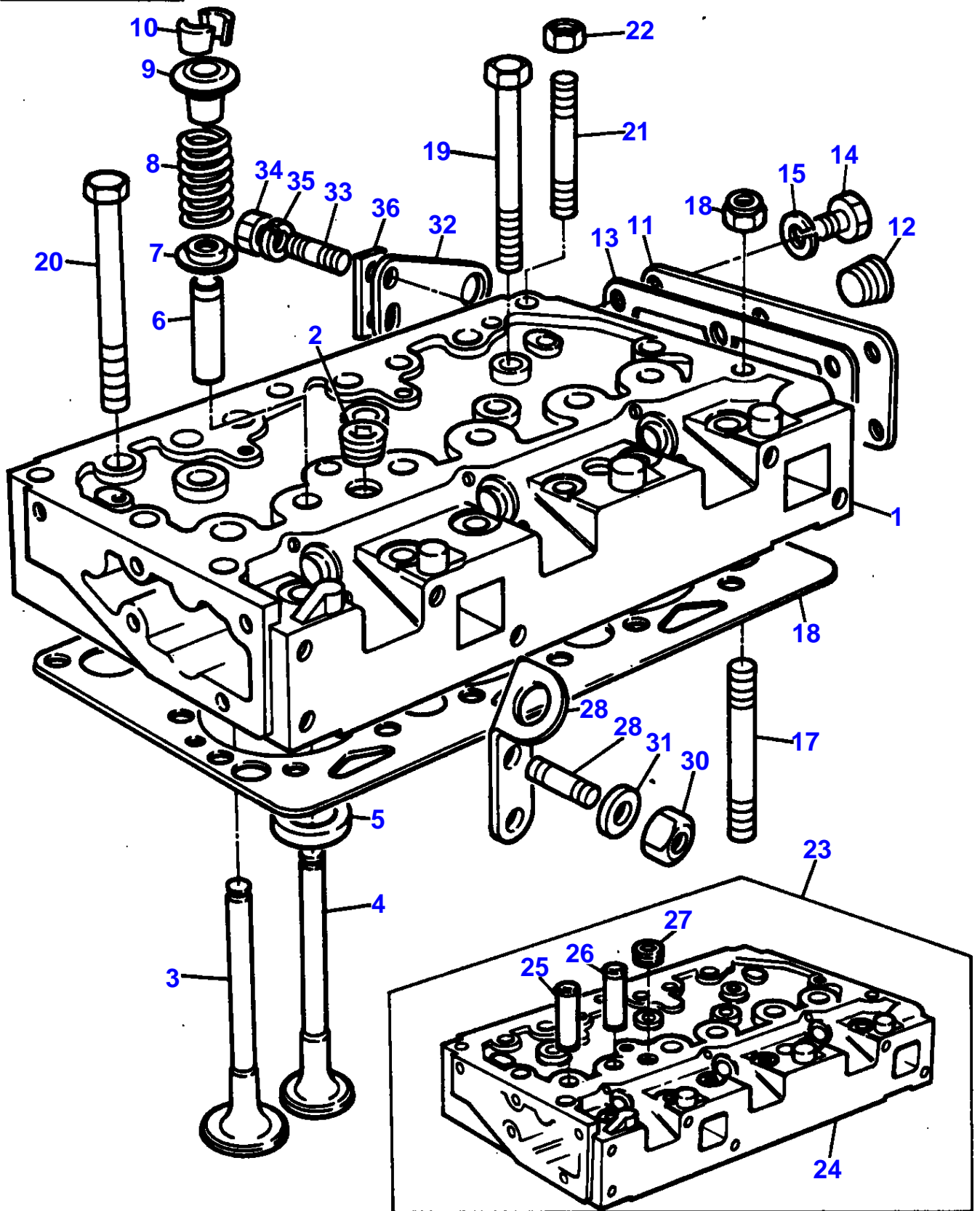
1637073

CRANKSHAFT, PISTONS AND CONNECTING RODS - AD3.152 ENGINE

4

Item	Part Number	Qty	Description	Comments
34	0410236	1	Starter Ring	(32) 115T
35	0096803	6	Bolt	
36	33117127	6	Washer	Repairs and replaces 33117121
				(A) PRE-FINISHED
				(B) UNTOPPED
				(C) PRE-TOPPED
				(D) SLIP FIT
				(E) PRESS FIT
				(F) NOT FITTED ON THIS APPLICATION
				(G) REPLACES 31328241 IN ENGINE SETS ONLY(QTY 2).

C 0566-16M-A



Buy Now



Our support email:

ebooklibonline@outlook.com