

Page Title	Page Number
ENGINE AND ACCESSORIES	1
ENGINE AND ACCESSORIES - FROM- 12-1981	2
CYLINDER BLOCK - A4.236 ENGINE	3
CRANKSHAFT, PISTONS AND CONNECTING RODS - A4.236 ENGINE	4
CYLINDER HEAD - A4.236 ENGINE	5
ROCKER SHAFT - A4.236 ENGINE	6
AIR INDUCTION AND EXHAUST SYSTEM - A4.236 ENGINE - UP TO 01/12/81	7
AIR INDUCTION AND EXHAUST SYSTEM - A4.236 ENGINE - FROM 01/12/81	8
TIMING GEAR AND CAMSHAFT - A4.236 ENGINE	9
BALANCER UNIT - A4.236 ENGINE-UP TO ENGINE NO.U880190K	10
BALANCER UNIT - A4.236 ENGINE-FROM ENGINE NO.U880191K.	11
LUBRICATING OIL SUMP - A4.236 ENGINE	12
LUBRICATING OIL FILTER AND INTEGRAL COOLER - A4.236 ENGINE	13
WATER PUMP, THERMOSTAT AND HEAT EXCHANGER - A4.236 ENGINE - UP TO 01/12/81	14
WATER PUMP, THERMOSTAT AND HEAT EXCHANGER - A4.236 ENGINE - FROM 01/12/81	15
LOW PRESSURE FUEL SYSTEM - A4.236 ENGINE	16
FUEL INJECTION EQUIPMENT (DIESEL) - A4.236 ENGINE	17
JOINTS AND GASKETS	18
ALTERNATOR POSITIONER	19
ALTERNATOR POSITIONER - FROM- 12-1981	20
GUARDS PTO AND ALTERNATOR	21
ELECTRICAL EQUIPMENT - UP TO SERIAL 11-1981	22
BATTERY	23
GENERATOR-LUCAS - UP TO SERIAL 11-1981	24
ALTERNATOR-MOTOROLA	25
ALTERNATOR-MOTOROLA - FROM 12-1981	26
ALTERNATOR-LUCAS - FROM SERIAL S165043	27
STARTER-LUCAS	28
STARTER-LUCAS	29
STARTER - PERKINS	30
RADIATOR	31
FAN	32
FUEL TANK AND ATTACHMENTS	33
FUEL FILTERS AND PIPES - UP TO 11-1981	34
FUEL FILTERS AND PIPES - FROM 12-1981	35
FUEL FILTER - UP TO 11-1981	36
FUEL FILTER - UP TO 11-1981	37
FUEL FILTER - FROM TO 12-1981	38
AIR FILTER	39
EXHAUST SYSTEM - UP TO 11-1981	40
EXHAUST SYSTEM - FROM 12-1981	41
HAND THROTTLE CONTROL	42
THROTTLE CONTROLS	43
SINGLE CLUTCH	44
CLUTCH PEDAL AND LINKAGE - UP TO SERIAL NUMBER	45
CLUTCH PEDAL AND LINKAGE - FROM SERIAL NUMBER	46
8 SPEED SYNCHROMESH TRANSMISSION-HOUSING	47
8 SPEED SYNCHROMESH TRANSMISSION-SHIFT CONTROL	48
8 SPEED SYNCHROMESH TRANSMISSION-FORK AND GEAR SHIFTRAIL	49
8 SPEED SYNCHROMESH TRANSMISSION-MAIN SHAFT	50
SYNCHRO	51
8 SPEED SYNCHROMESH TRANSMISSION-COUNTERSHAFT	52
8 SPEED SYNCHROMESH ZF TRANSMISSION-HOUSING	53
8 SPEED SYNCHROMESH TRANSMISSION-SHIFT CONTROL - SYNCHRO- ZF	54
8 SPEED SYNCHROMESH ZF TRANSMISSION-FORK AND GEARSHIFT RAIL	55
8 SPEED SYNCHROMESH ZF TRANSMISSION-MAIN SHAFT	56
8 SPEED SYNCHROMESH ZF TRANSMISSION-SYNCHROMESH	57
8 SPEED SYNCHROMESH ZF TRANSMISSION-COUNTER SHAFT	58
12 SPEED TRANSMISSION-HOUSING - SYNCHRO- ZF	59
12 SPEED TRANSMISSION-SHIFT CONTROL - SYNCHRO- ZF	60
12 SPEED TRANSMISSION-FORK AND GEAR SHIFTRAIL - SYNCHRO- ZF	61
12 SPEED TRANSMISSION-INPUTSHAFT - SYNCHRO- ZF	62
12 SPEED TRANSMISSION-MAIN SHAFT - SYNCHRO- ZF- UP TO SERIAL NUMBER	63
12 SPEED TRANSMISSION-MAIN SHAFT - SYNCHRO ZF FROM SERIAL NU...- UP TO SERIAL NUL1660 27	64
12 SPEED TRANSMISSION-MAIN SHAFT - SYNCHRO- ZF- FROM SERIAL L166028	65
12 SPEED TRANSMISSION-COUNTERSHAFT - SYNCHRO- ZF- UP TO SERIAL 02/83	66

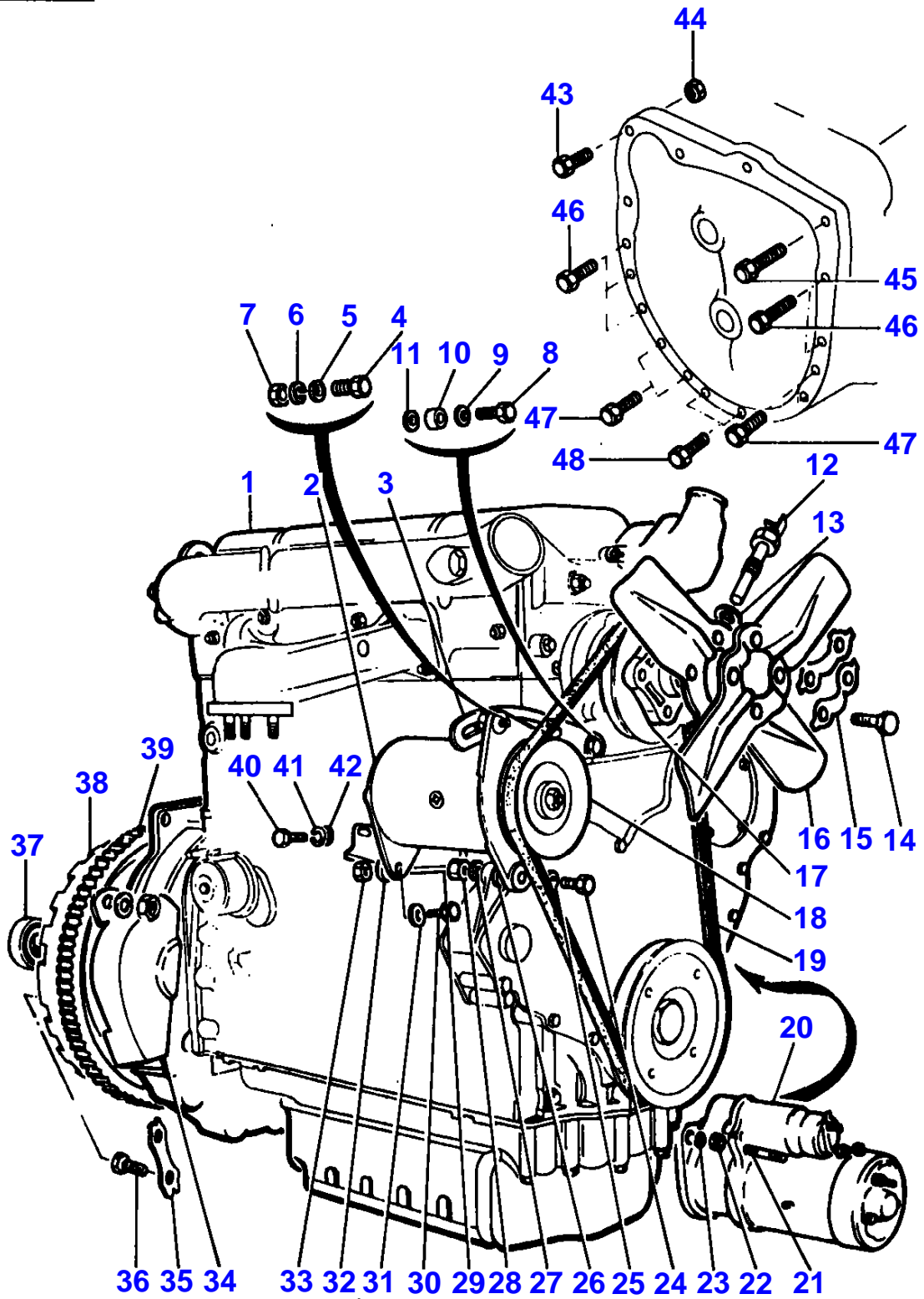
TABLE OF CONTENT

12 SPEED TRANSMISSION-COUNTERSHAFT - SYNCHRO- ZF- FROM SERIAL 03/83	67
EPICYCLIC UNIT-HEAVY DUTY	68
PTO SHAFT - WITH IPTO	69
PTO-CONTROL	70
IPTO-PIPES AND COVER	71
IPTO-CLUTCH AND VALVES	72
IPTO-CLUTCH AND VALVES - UP TO SERIAL NO	73
IPTO-CLUTCH AND VALVES - FROM SERIAL NUMBER	74
REAR AXLE-SPACER	75
REAR AXLE CENTRE HOUSING	76
REAR AXLE-ATTACHMENTS	77
REAR AXLE-DIFFERENTIAL	78
REAR AXLE-DIFFERENTIAL	79
REAR AXLE-DIFFERENTIAL LOCK MECHANISM	80
REAR AXLE- DIFFERENTIAL LOCK PEDAL - FROM SERIAL NUMBER	81
REAR AXLE-HOUSING	82
DISC BRAKES - 5 DISC	83
BRAKE PEDALS AND LINKAGE	84
BRAKE PEDALS AND LINKAGE - UP TO SERIAL NUMBER	85
BRAKE PEDALS AND LINKAGE - FROM SERIAL NUMBER	86
BRAKE PEDALS AND LINKAGE - FROM SERIAL DU 10/1981- WITH HANDBRAKE	87
HANDBRAKE	88
POWER ASSISTED VARIABLE TRACK WHEEL	89
POWER ASSISTED VARIABLE TRACK WHEEL	90
REAR WHEELS - 12X24	91
FRONT WHEELS	92
FRONT AXLE - WHEEL HUB	93
FRONT AXLE-NORMAL DUTY	94
AXLE SUPPORT - UP TO SERIAL B 179039	95
AXLE SUPPORT - FROM SERIAL B 179040	96
STEERING GEAR - STEERING WHEEL	97
STEERING GEAR - STEERING WHEEL FROM SERIAL NO T.299046	98
STEERING LINKAGE - TOP BAR	99
STEERING LINKAGE - LOWER	100
STEERING LINKAGE - SHAFT	101
STEERING HYDRAULIC LINES	102
STEERING PUMP-AIR EQUIPEMENT	103
STEERING PUMP-AIR EQUIPEMENT	104
STEERING CYLINDER - POWER STEERING	105
STEERING CYLINDER-LASER	106
STEERING CYLINDER-LASER	107
HYDRAULIC PUMP DRIVE	108
HYDRAULIC PUMP-DUAL-AIR EQUIPMENT	109
HYDRAULIC PUMP-DUAL-AIR EQUIPMENT	110
HYDRAULIC PUMP-DUAL-AIR EQUIPMENT	111
INTERNAL LINES - AUXILIARY HYDRAULIC	112
INTERNAL LINES - AUXILIARY HYDRAULIC- WITH BREATHING FILTER	113
INTERNAL LINES - 8 SPEED - 12 SPEED	114
INTERNAL LINES - WITH AUXILIARY PUMP	115
OIL FILTER	116
OIL FILTER - TUBE-WITHOUT OIL COOLER- UP TO SERIAL NO...	117
HYDRAULIC LINE - MICRONIC FILTRATION- - WITHOUT OIL COOLER- FROM SERIAL NUMBER	118
DISTRIBUTOR - KONTAK	119
DISTRIBUTOR - KONTAK-DELIVERY	120
HYDRAULIC PUMP-BODY SHAFT PISTON	121
HYDRAULIC PUMP-OSCILLATOR VALVE	122
HYDRAULIC PUMP-STRAINER UNIT	123
HYDRAULIC PUMP-STRAINER UNIT - WITH BREATHING FILTER	124
HYDRAULIC PUMP-PRESSURE CONTROL VALVE	125
BREATHING FILTER	126
HYDRAULIC LIFT COVER	127
DRAFT AND POSITION CONTROLS	128
QUADRANT AND CONTROL LEVERS - CONTROL SHAFT	129
RESPONSE CONTROLS	130
LIFT ARMS	131
LIFT ARMS - RAM-UP TO 12-81	132
LIFT ARMS - RAM-FROM 12-81	133
LIFT ARMS - DRAFT AND POSITION CONTROLS	134

TABLE OF CONTENT

TOP LINKS - UPPER LINK-SCALE	135
LOWER LINKS - LEVELLING BOX	136
LOWER LINKS - BOTTOM BAR	137
LOWER LINKS - CHAIN	138
LOWER LINKS - STAY-HITCH BAR	139
FRONT HITCH	140
SHEET METAL-GRILLE	141
SHEET METAL-HOOD	142
SHEET METAL-INSTRUMENT PANEL	143
SHEET METAL-INSTRUMENT PANEL - INSTRUMENT CHROME- UP TO SERIAL	144
SHEET METAL-INSTRUMENT PANEL - INSTRUMENT BLACK- FROM SERIAL	145
SHEET METAL-INSTRUMENT PANEL - INSTRUMENTS	146
SHEET METAL-SHEEL FENDERS	147
SAFETY FRAME	148
FOOTSTEP	149
SEAT-SABLE - UP TO SERIAL NO J251044	150
SEAT-SABLE	151
SEAT-BOSTROM - XL BALTIC	152
SEAT-BOSTROM - XH BALTIC	153
TRANSFERS	154
SPEED CHARTS	155
SPEED CHARTS	156
WIRING - FROM 12-1981	157
WIRING - FROM SERIAL NO J215046	158
WIRING	159
REAR LIGHTING EQUIPMENT - SIGNALLING	160
ELECTRICAL WIRING - HORN	161
FRONT LIGHTING EQUIPMENT	162
REAR LIGHTING EQUIPMENT - WORKING LIGHT	163
REAR LIGHTING EQUIPMENT - LICENSE PLATE	164

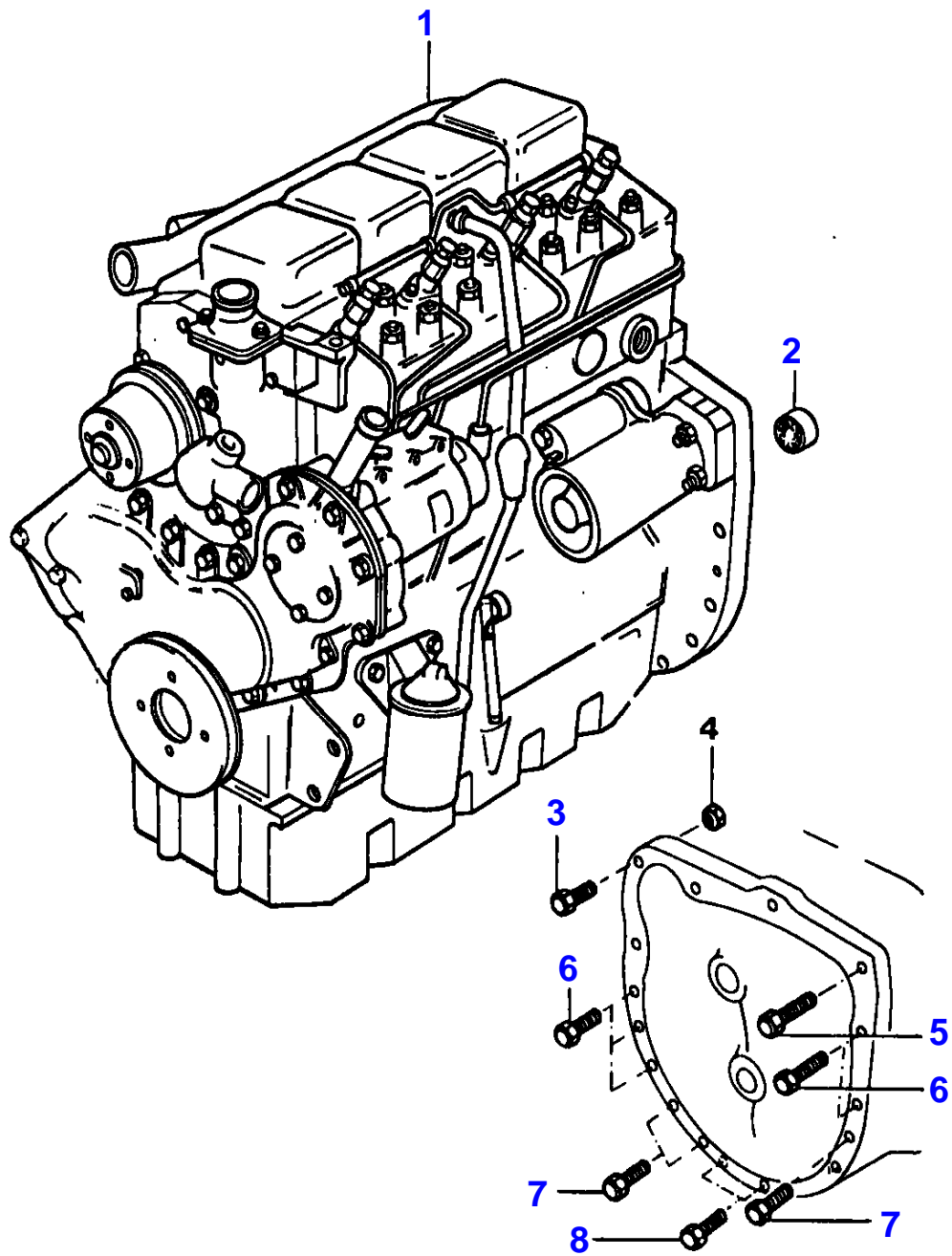
1-0010-022



ENGINE AND ACCESSORIES

Item	Part Number	Qty	Description	Comments
1	1661159M1	1	Engine	A 4236 Up to Serial or Engine Number 11-1981 PEL - LD22532
2		1	Dynamo	See Page - Reference Number 24/001 Up to Serial or Engine Number 11-1981
3	960960M1	1	Lever	Up to Serial or Engine Number 11-1981
4	353680X1	1	Screw Unc	Up to Serial or Engine Number 11-1981
5	353755X1	1	Washer	Up to Serial or Engine Number 11-1981
6	353446X1	1	Lock Washer	Up to Serial or Engine Number 11-1981
7	355565X1	1	Nut Unc	Up to Serial or Engine Number 11-1981
8	361456X1	1	Bolt	Up to Serial or Engine Number 11-1981
9	353755X1	1	Washer	Up to Serial or Engine Number 11-1981
10	909591M1	1	Spacer	Up to Serial or Engine Number 11-1981
11	353446X1	1	Lock Washer	Up to Serial or Engine Number 11-1981
12	963418M1	1	Gauge	
13	2411157	1	Washer	
14	361444X1	4	Screw	
15	897057M1	2	Brake	
16	894729M1	1	Fan	
17	894730M1	1	Fan	
18	960028M1	1	Pulley	Up to Serial or Engine Number 11-1981
19	960972M1	1	Belt	Up to Serial or Engine Number 11-1981
20			Startermotor	See Page - Reference Number 28/001
21	0826481	3	Stud	
22	353431X1	3	Nut Unf	
23	353434X1	3	Lock Washer	
24	353527X1	1	Screw	Up to Serial or Engine Number 11-1981
25	353755X1	1	Washer	Up to Serial or Engine Number 11-1981
26	960959M1	1	Spacer	Up to Serial or Engine Number 11-1981
27	353446X1	1	Lock Washer	Up to Serial or Engine Number 11-1981
28	353916X1	1	Nut Unf	Up to Serial or Engine Number 11-1981
29	960963M91	1	Bearer	Up to Serial or Engine Number 11-1981
30	353521X1	1	Bolt Unf	Up to Serial or Engine Number 11-1981
31	353755X1	1	Washer	Up to Serial or Engine Number 11-1981
32	353446X1	1	Lock Washer	Up to Serial or Engine Number 11-1981
33	353916X1	1	Nut Unf	Up to Serial or Engine Number 11-1981
34	880301M2	1	Cowl	Up to Serial or Engine Number 11-1981
35	731192M1	3	Tab Washer	
36	354393X1	6	Screw Unf	
37	828123M1	1	Bearing Assy	
38		1	Flywheel	See Page - Reference Number 4/021
39		1	Crownwheel	See Page - Reference Number 4/023
40	353537X1	2	Screw Unf	
41	375706X1	2	Washer	
42	353434X1	2	Lock Washer	
43	361536X1	1	Screw	
44	363625X1	1	Nut	
45	362489X1	1	Bolt	
46	362493X1	5	Screw	
47	362499X1	4	Screw	
48	362485X1	2	Screw	

1-0010-081



MASSEY FERGUSON

MF 168 MKIII/168 F TRACTORS (FR) - 1637075

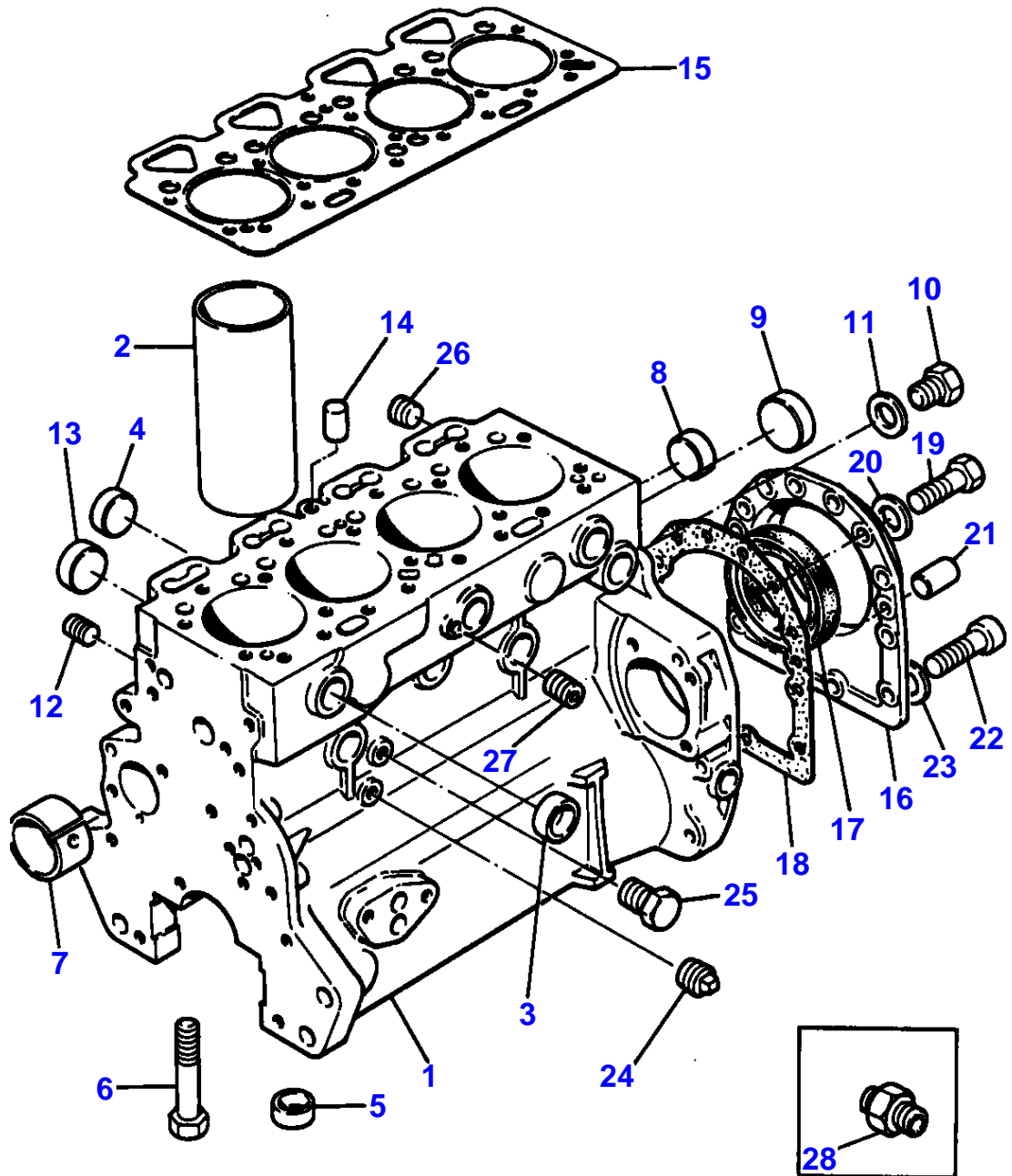
1637075

ENGINE AND ACCESSORIES - FROM- 12-1981

2

Item	Part Number	Qty	Description	Comments
				FROM- 12-1981
1	1673030M91	1	Engine	A4.236 PEL - LD22784
2	828123M1	1	Bearing Assy	
3	361536X1	1	Screw	
4	363625X1	1	Nut	
5	362491X1	1	Screw	
6	362493X1	5	Screw	
7	362499X1	4	Screw	
8	362485X1	2	Screw	

L-0560-10M-A



CYLINDER BLOCK - A4.236 ENGINE

Item	Part Number	Qty	Description	Comments
				A4.236 ENGINE
1	ZZ 50144	1	Kit,Cyl.Block	(C,D) Repairs and replaces ZZ50079 Repairs and replaces ZZ50081 Repairs and replaces ZZ50039
2	31358393	4	Liner	(1) (A,E,H)
2	31358394	X	Liner	(B,E,H)
	31358398	X	Liner	(E,H) Repairs and replaces 31358403 0.010" 0.25MM O/S
2	3135X031	4	Liner	(1) (A,F,G,H)
2	3135X032	X	Liner	(B,F,G,H)
3	0650710	6	Plug	(1) Repairs and replaces 0650563
4	32418117	4	Plug	(1) Repairs and replaces 0650618
5	33142111	10	Thimble	(1)
6	32166329	10	Bolt	(1)
7	31134164	1	Bush	(1) Repairs and replaces 31134163 Repairs and replaces 31134132
8	0650710	2	Plug	(1) Repairs and replaces 0650563
9	32416105	1	Plug	
10	0650582	1	Plug	
11	0920130	1	Washer	
12	32114501	1	Plug	
13	0650577	4	Plug	
14	32417134	1	Plug	
15	3681E018	1	Head Gasket	Repairs and replaces 36812352 Repairs and replaces 36812349
16	4142V064	1	Housing	Repairs and replaces 4142V061 Repairs and replaces 4142V031
17	2418F475	1	Seal	(16) Repairs and replaces 2415391
18	36817157	1	Joint	
19	0746211	10	Bolt	
20	0920003	10	Washer	
21	0350009	2	Dowel	
22	2172530	2	Capscrew	
23	33112111	2	Washer	
24	0650594	1	Plug	From Serial or Engine Number 01/12/81
25	32161114	2	Plug	Repairs and replaces 32161357 Repairs and replaces 32161114
26	0650588	2	Plug	
27	32114143	1	Plug	
28	0201396	1	Union	Up to Serial or Engine Number 01/12/81
				(A) PRESS FIT
				(B) SLIP FIT
				(C) WAS ZZ50031 USE ZZ50039/32166337(2)/32166338(12)/3 2166339(8).
				(D) WAS ZZ50039 USE ZZ50081 WITH 36812352/33153157/211 6053/2184634(3)
				(E) USED ONLY WITH ZZ50039
				(F) USED ONLY WITH ZZ50079

MASSEY FERGUSON

MF 168 MKIII/168 F TRACTORS (FR) - 1637075

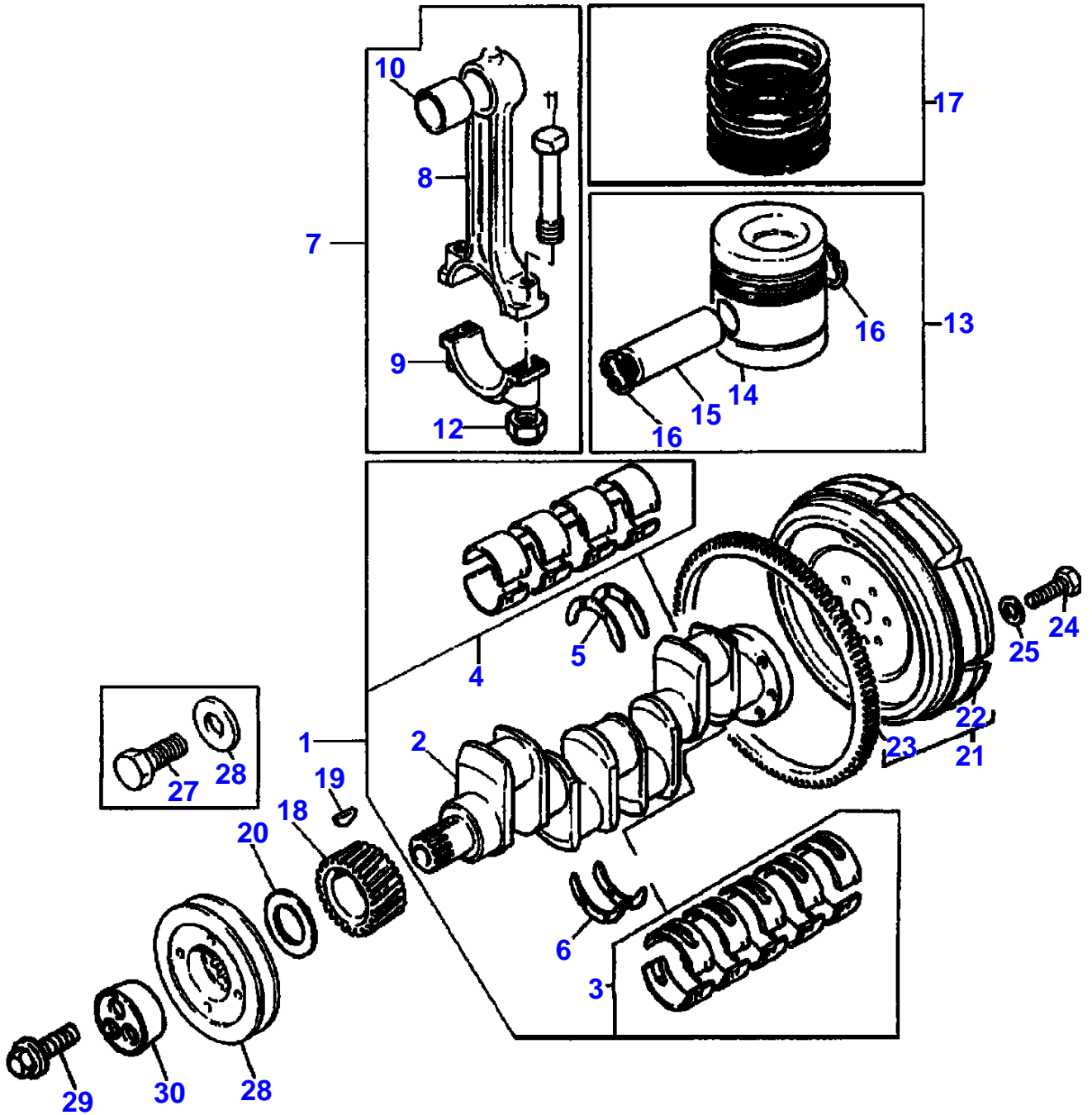
1637075

CYLINDER BLOCK - A4.236 ENGINE

3

Item	Part Number	Qty	Description	Comments
				(G) USED ONLY WITH ZZ50081.AND ZZ50144.
				(H) SEE PERKINS SERVICE BULLETIN NO.29 AND NO.35.

L-0563-08M-B



CRANKSHAFT, PISTONS AND CONNECTING RODS - A4.236 ENGINE

Item	Part Number	Qty	Description	Comments
				A4.236 ENGINE
1	ZZ 90082	1	Kit, Crankshaft	Repairs and replaces ZZ90083 Repairs and replaces U5BG0026 Repairs and replaces 68609
2		1	Crankshaft	(1) Not serviced, order REF.1
3	81558	1	Kit, Bearing	(1) (A)
3	81558A	X	Kit, Bearing	(A) Thickness (-)0.25MM Thickness (-)0.010"
3	81558B	X	Kit, Bearing	(A) Thickness (-)0.50MM Thickness (-)0.020"
3	81558C	X	Kit, Bearing	(A) Thickness (-)0.75MM Thickness (-)0.030"
4	85042	1	Kit, Bearing	(1) (A)
4	85042A	X	Kit, Bearing	(A) Thickness (-)0.25MM Thickness (-)0.010"
4	85042B	X	Kit, Bearing	(A) Thickness (-)0.50MM Thickness (-)0.020"
4	85042C	X	Kit, Bearing	(A) Thickness (-)0.75MM Thickness (-)0.030"
5	31137551	2	Thrust Washer	(1) Repairs and replaces 31137311
5	31137312	X	Thrust Washer	Thickness (+)0.19MM Thickness (+)0.0075"
6	31137561	2	Thrust Washer	(1) Repairs and replaces 31137321
6	31137322	X	Thrust Washer	Thickness (+)0.19MM Thickness (+)0.0075"
7	ZZ 90009	4	Kit, Conrod	Repairs and replaces M7BJ0015
8		1	Conrod	(7) Not serviced, order REF.7
9		1	Cap	(7) Not serviced, order REF.7
10	31134123	1	Bush	(7)
11	32762144	2	Bolt	(7)
12	33221328	2	Nut	(7)
13	68300	4	Kit, Piston	(B) Up to Serial or Engine Number U917431K
13	U5LU0025	4	Kit, Piston	(B) From Serial or Engine Number U917432K
13	U5LP0035	4	Kit, Piston	(C) From Serial or Engine Number U917432K
13	68301	4	Kit, Piston	(C) Up to Serial or Engine Number U917431K
13	68301C	X	Kit, Piston	(C) Up to Serial or Engine Number U917431K Thickness (+)0.75MM Thickness (+)0.030"
14		1	Piston	(13) Not serviced, order REF.13
15		1	Pin	(13) Not serviced, order REF.13
16	0170002	2	Circlip	(13)
17	41158041	4	Kit, Piston Ring	
	41158041C	X	Kit, Piston Ring	Thickness (+)0.75MM Thickness (+)0.030"
18	31171681	1	Gear,Crankshaft	28T
19	0500012	1	Woodruff Key	
20	33125416	1	Washer	
21	41117084	1	Flywheel	
22		1	Flywheel	(21)

MASSEY FERGUSON**MF 168 MKIII/168 F TRACTORS (FR) - 1637075**

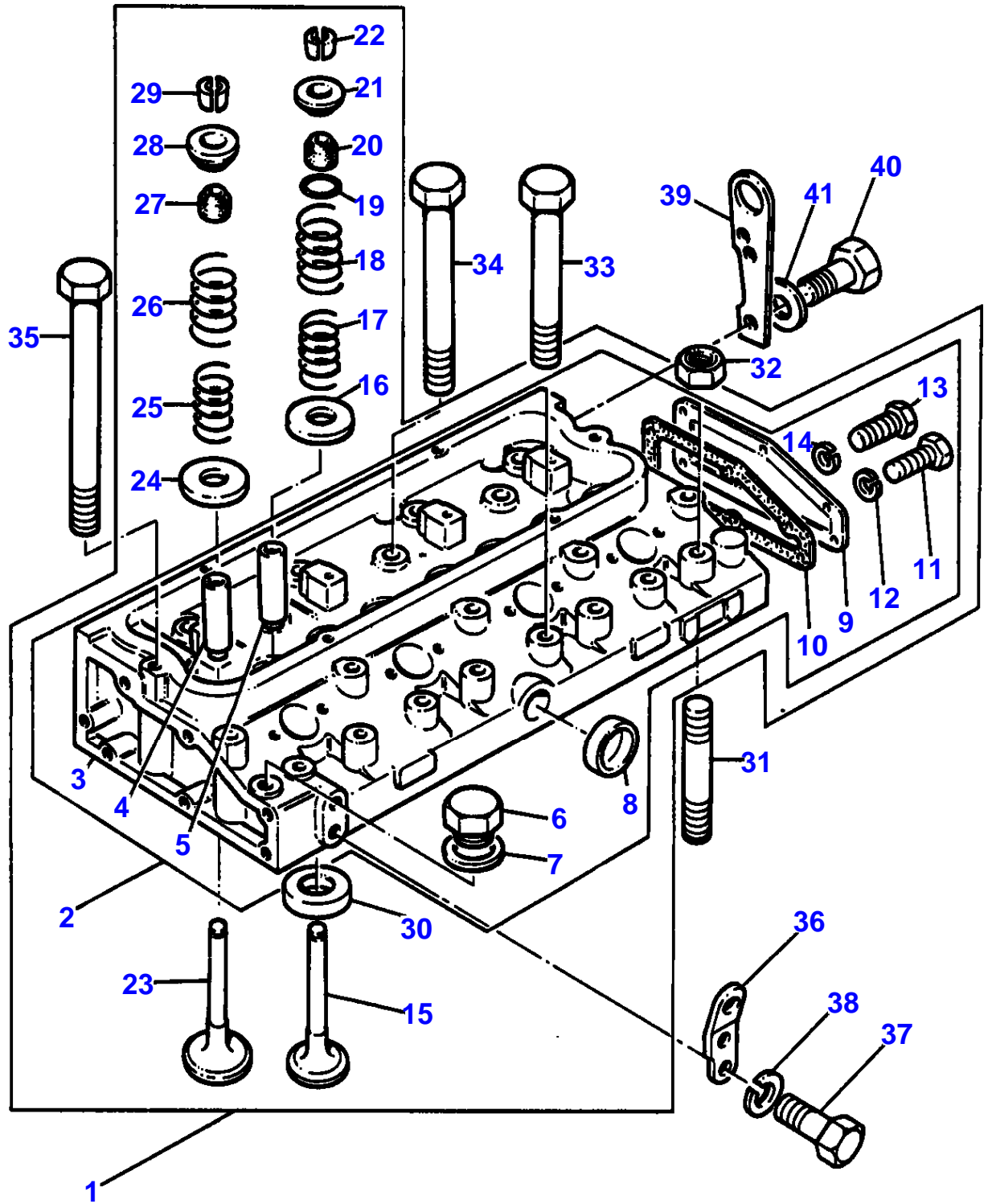
1637075

CRANKSHAFT, PISTONS AND CONNECTING RODS - A4.236 ENGINE

4

Item	Part Number	Qty	Description	Comments
23	0410236	1	Starter Ring	Not serviced, order REF.21 (21) Number of teeth/spines 115
24	32162203	6	Screw	
25	33117127	6	Washer	Repairs and replaces 33117121
26	31148798	1	Pulley,Crank	Up to Serial or Engine Number 01/12/81 Repairs and replaces 31148791
26	31148714	1	Pulley,Crank	From Serial or Engine Number 01/12/81 Repairs and replaces 31148713
27	32162331	1	Screw	(D) Repairs and replaces 32162318
28	33125124	1	Washer	(D)
29	3242T001	1	Thrust Block	(E)
30	32186139	3	Screw	(E)
				(A) PRE-FINISHED
				(B) UNTOPPED
				(C) PRE-TOPPED
				(D) USED ONLY WITH CRANKSHAFTS 68609/94434/U5BG0008/U5 BG0009/U5BG0019.
				(E) USED ONLY WITH CRANKSHAFTS U5BG0022/U5BG0023/

L-0566-08M-A



Buy Now



Our support email:

ebooklibonline@outlook.com