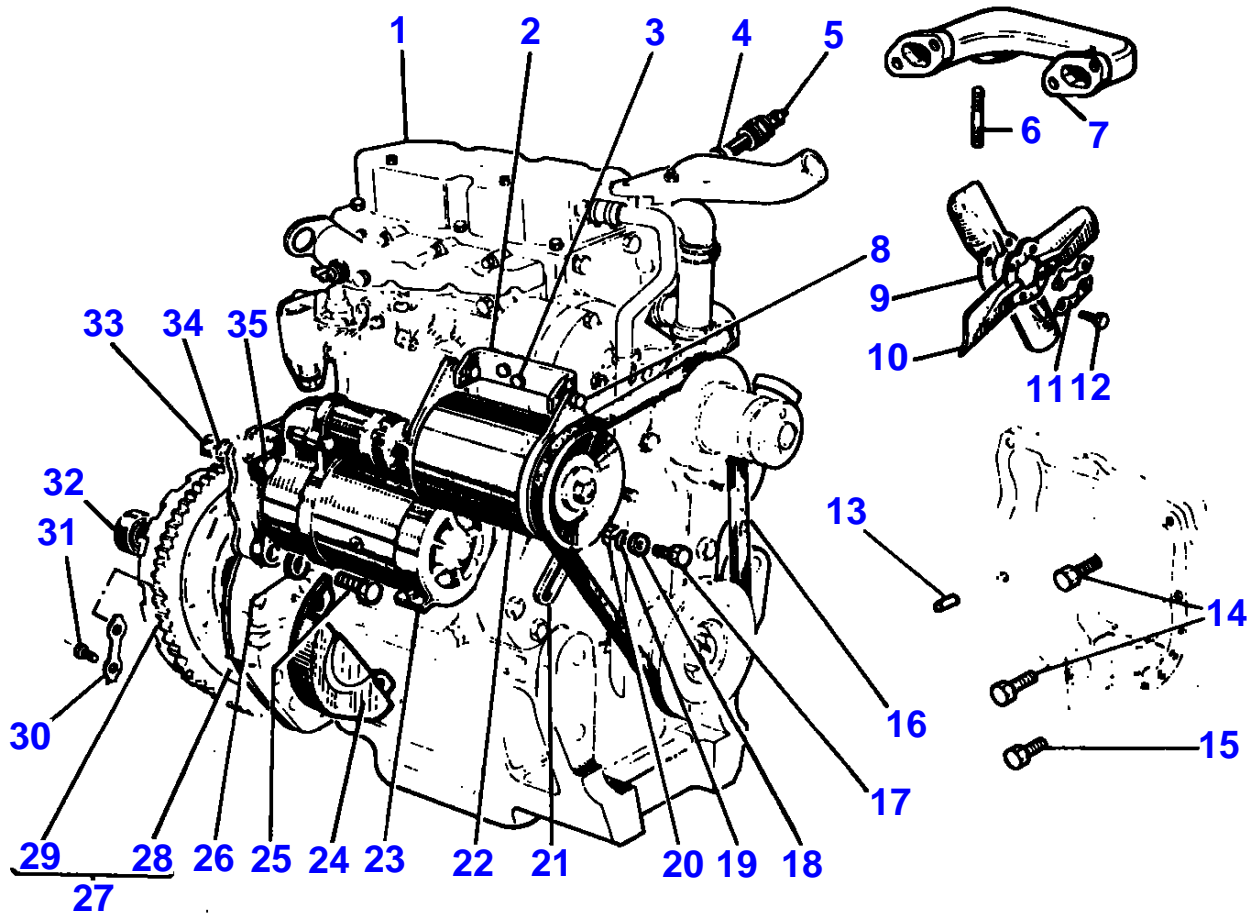


Page Title	Page Number
ENGINE AND ACCESSORIES - UP TO SERIAL 11-1981	1
ENGINE AND ACCESSORIES - FROM 12-1981	2
CYLINDER BLOCK	3
CRANKSHAFT, PISTONS AND CONNECTING RODS - AD3.152 ENGINE	4
CYLINDER HEAD - AD3.152 ENGINE	5
ROCKER SHAFT - AD3.152 ENGINE	6
AIR INDUCTION AND EXHAUST SYSTEM - AD3.152 ENGINE	7
TIMING GEAR AND CAMSHAFT - AD3.152 ENGINE	8
LUBRICATING OIL SUMP - AD3.152 ENGINE	9
LUBRICATING OIL FILTER AND INTEGRAL COOLER - AD3.152 ENGINE	10
WATER PUMP, THERMOSTAT AND HEAT EXCHANGER - AD3.152 ENGINE	11
FUEL OIL LIFT PUMP	12
FUEL INJECTION EQUIPMENT (DIESEL) - AD3.152 ENGINE	13
JOINTS AND GASKETS - AD3.152 ENGINE	14
BATTERY - UP TO SERIAL 11-1981	15
BATTERY	16
BATTERY	17
GENERATOR-DUCELLIER - UP TO SERIAL 11-1981	18
GENERATOR-PARIS RHONE - UP TO SERIAL 11-1981	19
ALTERNATOR-LUCAS - FROM SERIAL S165043	20
GUARDS PTO AND ALTERNATOR	21
ALTERNATOR POSITIONER - ENGINE- FROM 12-1981	22
STARTER-DUCELLIER	23
STARTER-DUCELLIER	24
STARTER-LUCAS	25
STARTER-PARIS RHONE	26
RADIATOR	27
FAN	28
FUEL TANK AND ATTACHMENTS	29
FUEL FILTERS AND PIPES	30
FUEL FILTER	31
AIR FILTER	32
AIR FILTER-OIL BATH AIR FILTER	33
AIR FILTER-OIL BATH AIR FILTER	34
EXHAUST SYSTEM	35
HAND THROTTLE CONTROL	36
DUAL CLUTCH	37
CLUTCH PEDAL AND LINKAGE - UP TO SERIAL NUMBER	38
CLUTCH PEDAL AND LINKAGE - FROM SERIAL NUMBER	39
CLUTCH PEDAL AND LINKAGE - CATCH PEDAL- FROM SERIAL NUMBER	40
8 SPEED SYNCHROMESH TRANSMISSION-HOUSING	41
8 SPEED SYNCHROMESH TRANSMISSION-CONTROL	42
8 SPEED SYNCHROMESH TRANSMISSION-MAIN SHAFT	43
SYNCHRO	44
8 SPEED SYNCHROMESH TRANSMISSION-COUNTERSHAFT	45
8 SPEED SYNCHROMESH ZF TRANSMISSION-HOUSING	46
8 SPEED SYNCHROMESH TRANSMISSION-SHIFT CONTROL - SYNCHRO-	47
8 SPEED SYNCHROMESH ZF TRANSMISSION-FORK AND GEARSHIFT RAIL	48
8 SPEED SYNCHROMESH ZF TRANSMISSION-MAIN SHAFT	49
8 SPEED SYNCHROMESH ZF TRANSMISSION-SYNCHROMESH	50
8 SPEED SYNCHROMESH ZF TRANSMISSION-COUNTER SHAFT	51
EPICYCLIC UNIT-NORMAL DUTY	52
PTO SHAFT - LIVE PTO	53
PTO-CONTROL	54
REAR AXLE CENTRE HOUSING	55
REAR AXLE CENTRE HOUSING - ASSEMBLING PARTS	56
REAR AXLE-ATTACHMENTS	57
REAR AXLE-DIFFERENTIAL	58
REAR AXLE-DIFFERENTIAL LOCK MECHANISM	59
REAR AXLE-DIFFERENTIAL LOCK MECHANISM - UP TO SERIAL NUMBER- SHIFT CONTROL	60
REAR AXLE-DIFFERENTIAL LOCK MECHANISM - FROM SERIAL- SHIFT CONTROL	61
REAR AXLE-HOUSING	62
DISC BRAKES - 5 DISC	63
BRAKE PEDALS AND LINKAGE	64
BRAKE PEDALS AND LINKAGE - UP TO SERIAL NUMBER	65
BRAKE PEDALS AND LINKAGE - FROM SERIAL NUMBER	66

TABLE OF CONTENT

REAR WHEELS - UP TO SERIAL NO T.140002	67
REAR WHEELS - FROM SERIAL NO T.140003	68
REAR WHEELS - UP TO SERIAL NO K.262017	69
REAR WHEELS - FROM SERIAL NO K.262018	70
FRONT WHEELS	71
FRONT AXLE - WHEEL HUB- VINEYARD	72
FRONT AXLE	73
AXLE SUPPORT - UP TO SERIAL NO	74
AXLE SUPPORT - FROM SERIAL NUMBER	75
STEERING WHEEL	76
STEERING GEAR - BOX	77
STEERING GEAR	78
STEERING GEAR	79
STEERING LINKAGE	80
HYDRAULICS - WITHOUT BREATHING FILTER	81
HYDRAULIC PUMP-BODY SHAFT PISTON - LOW FLOW	82
HYDRAULIC PUMP-BODY SHAFT PISTON - LOW FLOW-WITHOUT AUXILIARY PUMP- WITHOUT PRESSURE MODULATION-WITHOUT SIDE PTO	83
HYDRAULIC PUMP-OSCILLATOR VALVE	84
HYDRAULIC PUMP-OSCILLATOR VALVE - WITHOUT PRESSURE MODULATION- MARK III	85
HYDRAULIC PUMP-STRAINER UNIT	86
HYDRAULIC PUMP-STRAINER UNIT - WITHOUT PRESSURE MODULATION- MARK III	87
QUADRANT AND CONTROL LEVERS	88
QUADRANT AND CONTROL LEVERS - CONTROL SHAFT	89
RESPONSE CONTROLS - UP TO NO	90
RESPONSE CONTROLS - FROM NO	91
HYDRAULIC LIFT COVER	92
LIFT ARMS	93
LIFT ARMS - CYLINDER-UP TO 12-81	94
LIFT ARMS - CYLINDER-FROM 12-81	95
LIFT ARMS - UP TO NO	96
LIFT ARMS - FROM NO	97
TOP LINKS - UPPER LINK-SCALE	98
LOWER LINKS - BOTTOM BAR	99
LOWER LINKS - LEVELLING BOX	100
LOWER LINKS - CHAIN	101
LOWER LINKS - STAY-HITCH BAR	102
SHEET METAL-GRILLE	103
SHEET METAL-HOOD	104
SHEET METAL-INSTRUMENT PANEL	105
SHEET METAL-INSTRUMENT PANEL - INSTRUMENT CHROME- UP TO SERIAL	106
SHEET METAL-INSTRUMENT PANEL - INSTRUMENT BLACK- FROM SERIAL	107
SHEET METAL-INSTRUMENT PANEL - INSTRUMENTS	108
SHEET METAL-SHEEL FENDERS	109
SAFETY FRAME	110
FOOTSTEP	111
SEAT-SABLE - UP TO SERIAL NO J251044	112
SEAT-BOSTROM - XL MINI BALTIC	113
SEAT-BOSTROM - XH MINI BALTIC	114
TRANSFERS	115
SPEED CHARTS	116
WIRING - ENGINE- FROM 12-1981	117
WIRING - FROM SERIAL NO J215046	118
WIRING	119
ELECTRICAL WIRING	120
REAR LIGHTING EQUIPMENT - SIGNALLING	121
ELECTRICAL WIRING - HORN	122
FRONT LIGHTING EQUIPMENT	123
REAR LIGHTING EQUIPMENT - WORKING LIGHT	124
REAR LIGHTING EQUIPMENT - LICENSE PLATE	125

1-0010-023



MASSEY FERGUSON

MF 145 MKIII/145 V TRACTORS - 1637076

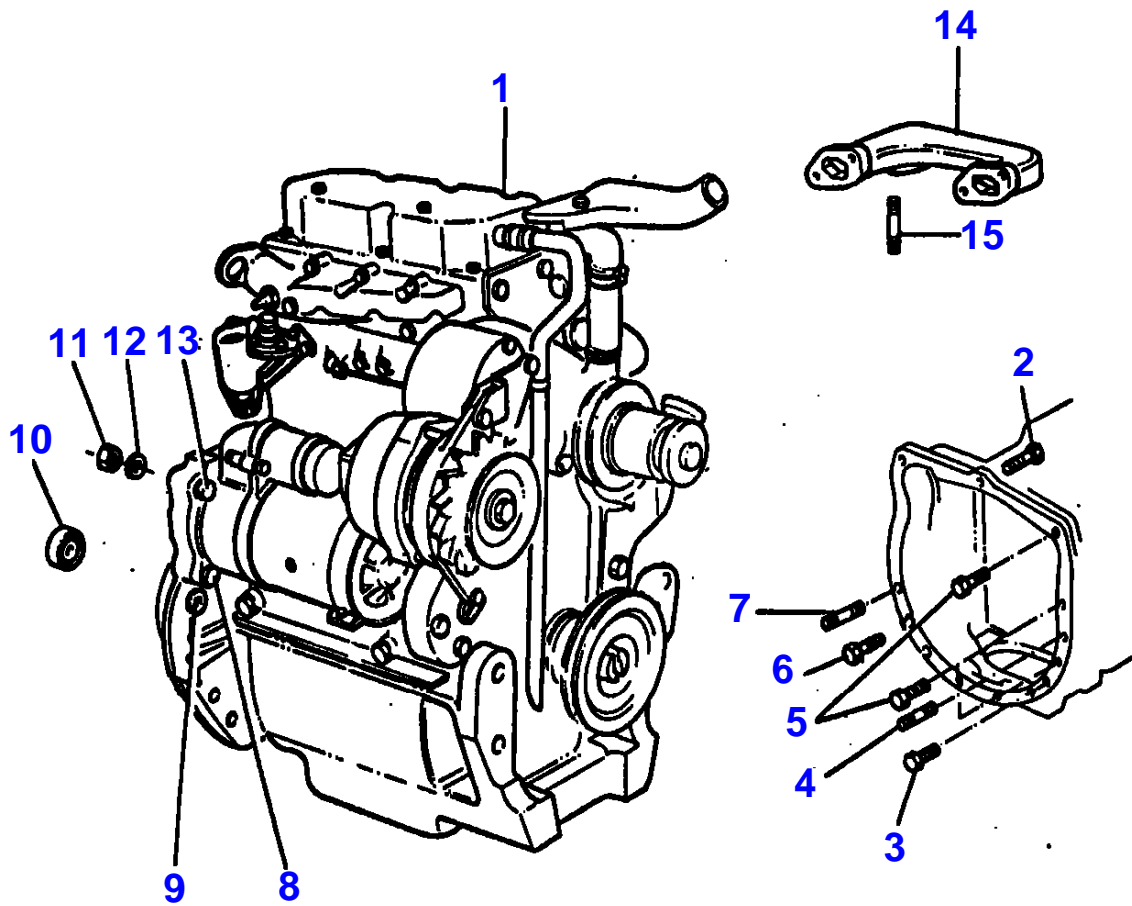
1637076

ENGINE AND ACCESSORIES - UP TO SERIAL 11-1981

1

Item	Part Number	Qty	Description	Comments
				UP TO SERIAL 11-1981
1	1808123M3	1	Engine	AD3.152 PEL - CE21583
2	962180M1	1	Bearer	
3	353690X1	2	Screw Unc	
	353756X1	2	Washer	
	353434X1	2	Lock Washer	
4	2411157	1	Washer	
5	963418M1	1	Gauge	
6	0826403	3	Stud	
7	37781341	1	Exhaust Manifold	
8	353521X1	2	Bolt Unf	
	353446X1	2	Lock Washer	
	353916X1	2	Nut Unf	
9	963929M1	1	Blade Fan	
10	963930M1	1	Blade Fan	
11	897057M1	2	Brake	
12	361444X1	4	Screw	
13	191314M1	2	Centraliser	
14	362491X1	2	Screw	
15	362499X1	8	Screw	
16	962184M2	1	Belt	
17	353521X1	1	Bolt Unf	
18	353446X1	1	Lock Washer	
19	353755X1	1	Washer	
20	353916X1	1	Nut Unf	
21	962181M1	1	Lever	
22		1	Dynamo	See Page - Reference Number 18/001
		1	Dynamo	See Page - Reference Number 19/001
23		1	Startermotor	See Page - Reference Number 23/001
		1	Startermotor	See Page - Reference Number 26/001
24	892639M92	1	Cowl	
25	362501X1	2	Screw	
26	353432X1	2	Lock Washer	
27	41112797	1	Flywheel	
28		1	Flywheel	Not serviced, order 41112797
29	0410236	1	Starter Ring	
30	0921062	3	Tab Washer	
31	32162203	6	Screw	
32	828123M1	1	Bearing Assy	
33	363625X1	1	Nut	
34	353432X1	1	Lock Washer	
35	361773X1	1	Screw	

1.0010.074



**MASSEY FERGUSON****MF 145 MKIII/145 V TRACTORS - 1637076**

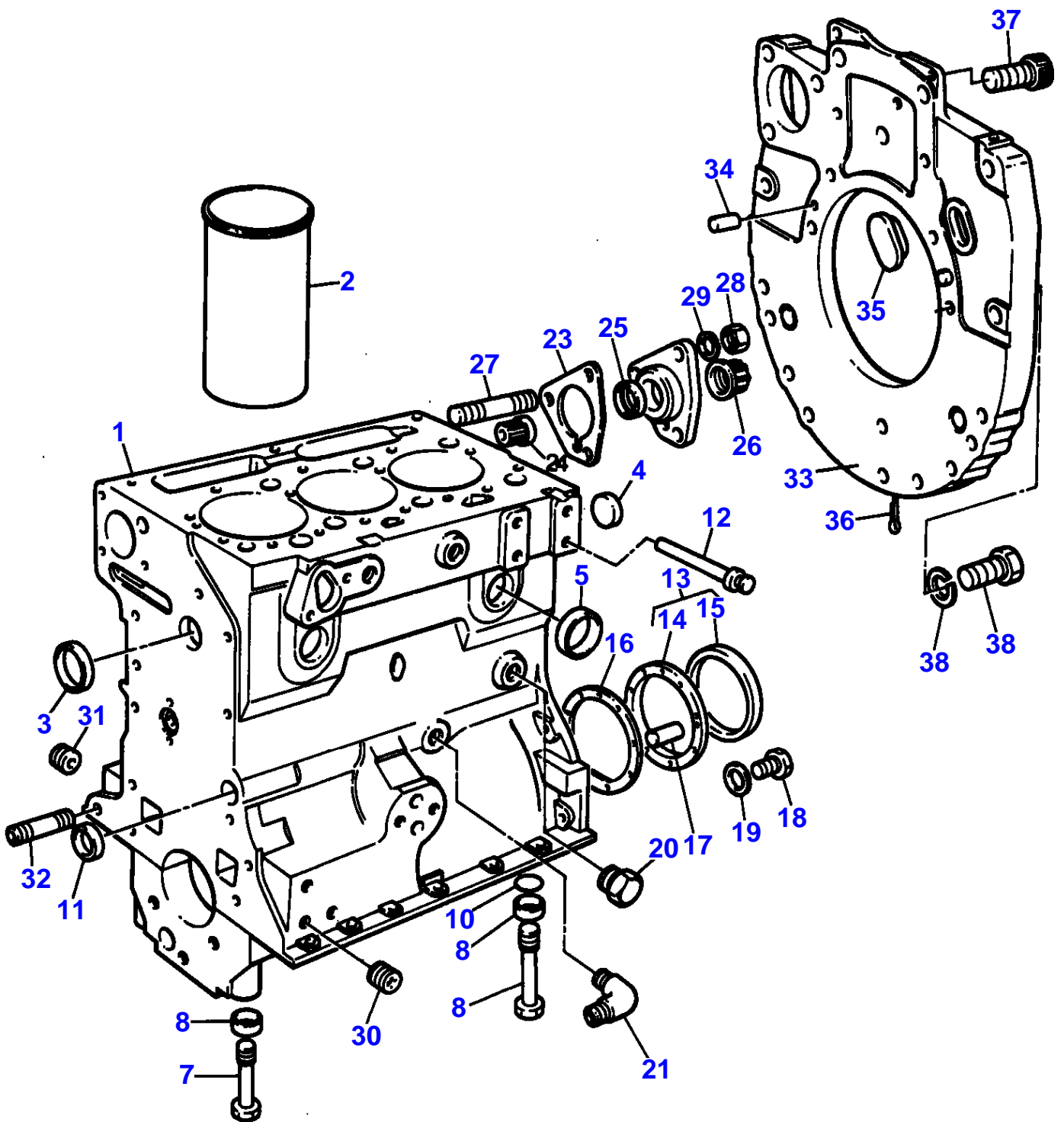
1637076

**ENGINE AND ACCESSORIES - FROM 12-1981**

2

Item	Part Number	Qty	Description	Comments
				FROM 12-1981
1	1808123M3	1	Engine	AD3.152 PEL - CE21583
2	362479X1	1	Screw	
3	362499X1	8	Screw	
4	191314M1	1	Centraliser	
5	362491X1	2	Screw	
6	353710X1	1	Bolt Unc	
7	191314M1	1	Centraliser	
8	362501X1	2	Screw	
9	353432X1	2	Lock Washer	
10	828123M1	1	Bearing Assy	
11	363625X1	1	Nut	
12	353432X1	1	Lock Washer	
13	361773X1	1	Screw	
14	37781341	1	Exhaust Manifold	Repairs and replaces 734874M1
15	0826403	3	Stud	

C-0560-17M - A



CYLINDER BLOCK

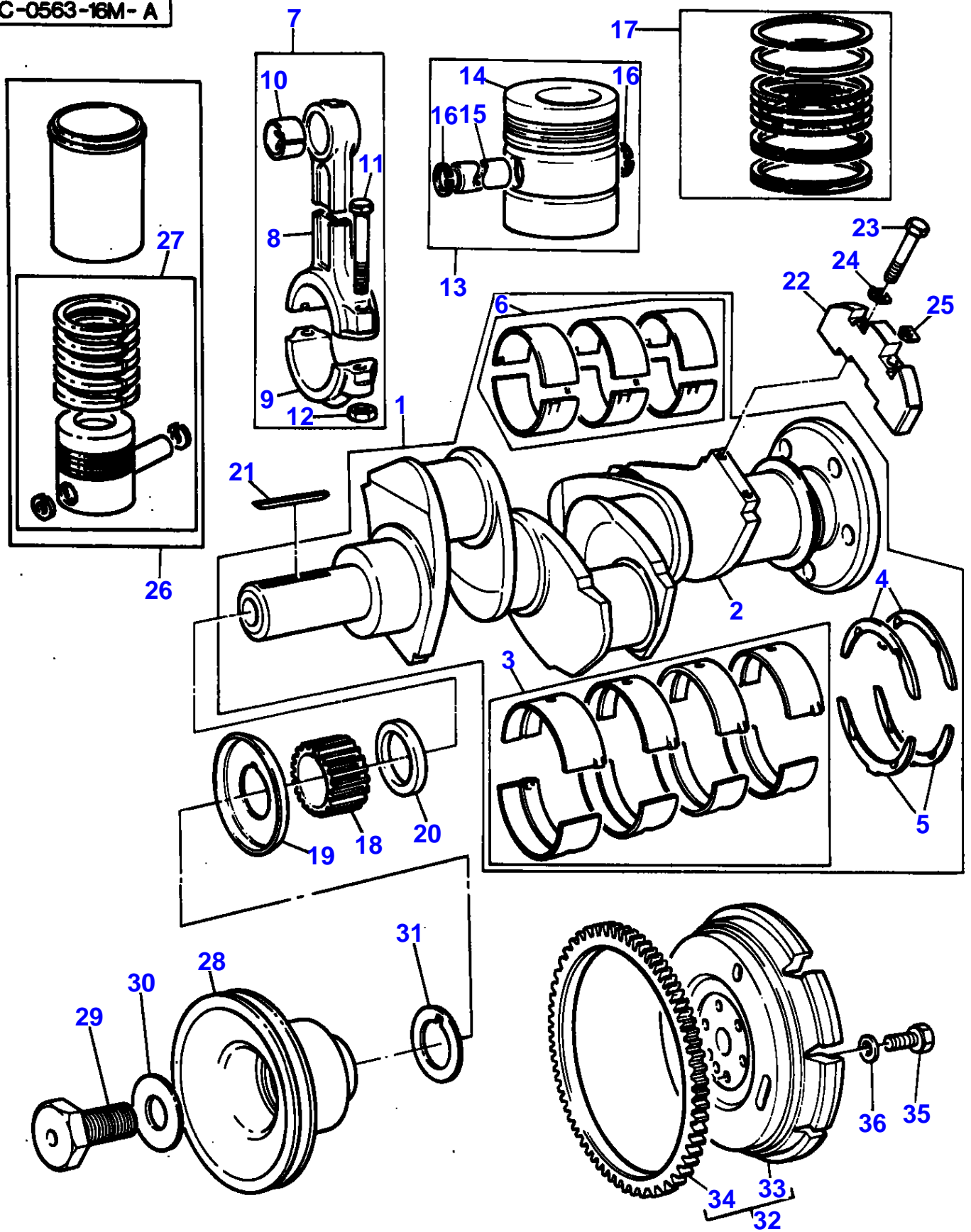
Item	Part Number	Qty	Description	Comments
1	ZZ 50170	1	Kit,Cyl.Block	Repairs and replaces ZZ50107 Repairs and replaces U5BA0008
2	31358323	3	Liner	(1) (A)
2	31358345	X	Liner	(B)
	31358384	X	Liner	0.010"0,25MM O/S
2	31358357	X	Liner	0.030"0,76MM O/S
3	0650710	1	Plug	(1)
4	0650664	1	Plug	(1)
5	0650563	4	Plug	(1)
6	33137408	6	Thimble	(1)
7	32181441	6	Screw	(1)
8	33137408	2	Thimble	(1)
9	32181442	2	Screw	(1)
10	2415608	2	O Ring	(1)
11	0650566	2	Plug	(1)
12	2485A204	1	Plug	(1)
13	4142V002	1	Housing	
14		1	Housing	(13) Not serviced, order REF.13
15	2418F475	1	Seal	(13)
16	33826111	1	Joint	
17	0350015	2	Dowel	
18	0746255	9	Setscrew	
19	0920003	9	Washer	
20	32161114	1	Plug	
21	37732901	1	Elbow	Up to Serial or Engine Number U726816K
	0201568	1	Connection	From Serial or Engine Number U726817K
22	37416751	1	Housing	
23	36862511	1	Joint	
24	33473106	1	Connection	
25	30854	1	Seal	
26	32813106	1	Cap Nut	
27	0826201	3	Stud	
28	0576002	3	Nut	
29	0920053	3	Washer	
30	32114471	1	Plug	
31	32114471	1	Plug	
32	32526512	1	Stud	
33	37147974	1	Plate	
34	0350016	2	Dowel	
35	37813113	1	Plug	
36	0610045	1	Pin	
37	0720798	2	Screw	
38	0746454	6	Setscrew	
39	0920054	6	Washer	

(A)  
PRESS FIT

(B)  
SLIP FIT



C-0563-16M-A



Item	Part Number	Qty	Description	Comments
				AD3.152 ENGINE
1	ZZ 90078	1	Kit, Crankshaft	Repairs and replaces ZZ90122 Repairs and replaces U5BG0027 Repairs and replaces ZZ90019
2		1	Crankshaft	(1) Not serviced, order REF.1
3	68084	X	Kit, Bearing	(A)
	68084A	X	Kit, Bearing	(A) Thickness (-)0.25MM Thickness (-)0.010"
3	68084B	X	Kit, Bearing	(A) Thickness (-)0.50MM Thickness (-)0.020"
3	68084C	X	Kit, Bearing	(A) Thickness (-)0.75MM Thickness (-)0.030"
4	31137211	2	Thrust Washer	(1)
	31137212	X	Washer	Thickness (+)0.19MM Thickness (+)0.0075"
5	31137221	2	Thrust Washer	(1)
	31137222	X	Washer	Thickness (+)0.19MM Thickness (+)0.0075"
6	85036	1	Kit, Bearing	(1) (A)
6	85036A	X	Kit, Bearing	(A) Thickness (-)0.25MM Thickness (-)0.010"
6	85036B	X	Kit, Bearing	(A) Thickness (-)0.50MM Thickness (-)0.020"
6	85036C	X	Kit, Bearing	(A) Thickness (-)0.75MM Thickness (-)0.030"
7	ZZ 90010	1	Kit, Conrod	Repairs and replaces 91051 Repairs and replaces M7BJ0014
8		1	Conrod	(7) Not serviced, order REF.7
9		1	Cap	(7) Not serviced, order REF.7
10	31134151	1	Bush	(7)
11	0095250	2	Bolt	(7)
12	33221327	2	Nut	(7)
13	68331	3	Kit, Piston	(B)
	68332	3	Kit, Piston	(C)
14		1	Piston	(13) Not serviced, order REF.13
15		1	Pin	(13) Not serviced, order REF.13
16	0170001	2	Circlip	(13)
17	41158057	3	Kit, Piston Ring	
18	0410132	1	Gear,Crankshaft	25T
19		1	Washer	(F)
20	0330811	1	Spacer	
21	36271704	1	Woodruff Key	
22	31328242	2	Weight	(G)
23	2185189	4	Screw	
24	31731515	2	Washer	
25	31731516	2	Washer	
26	U5MK0034	X	Kit, Cylinder	(D)
	U5MK0035	X	Kit, Cylinder	(E)
27	68504	1	Kit, Piston	(3) (C)
28	31143733	1	Pulley,Crank	
29	32162312	1	Screw	
30	33125112	1	Washer	
31	33176137	1	Washer	
32	41112797	1	Flywheel	
33		1	Flywheel	(32) Not serviced, order REF.32

MASSEY FERGUSON

MF 145 MKIII/145 V TRACTORS - 1637076

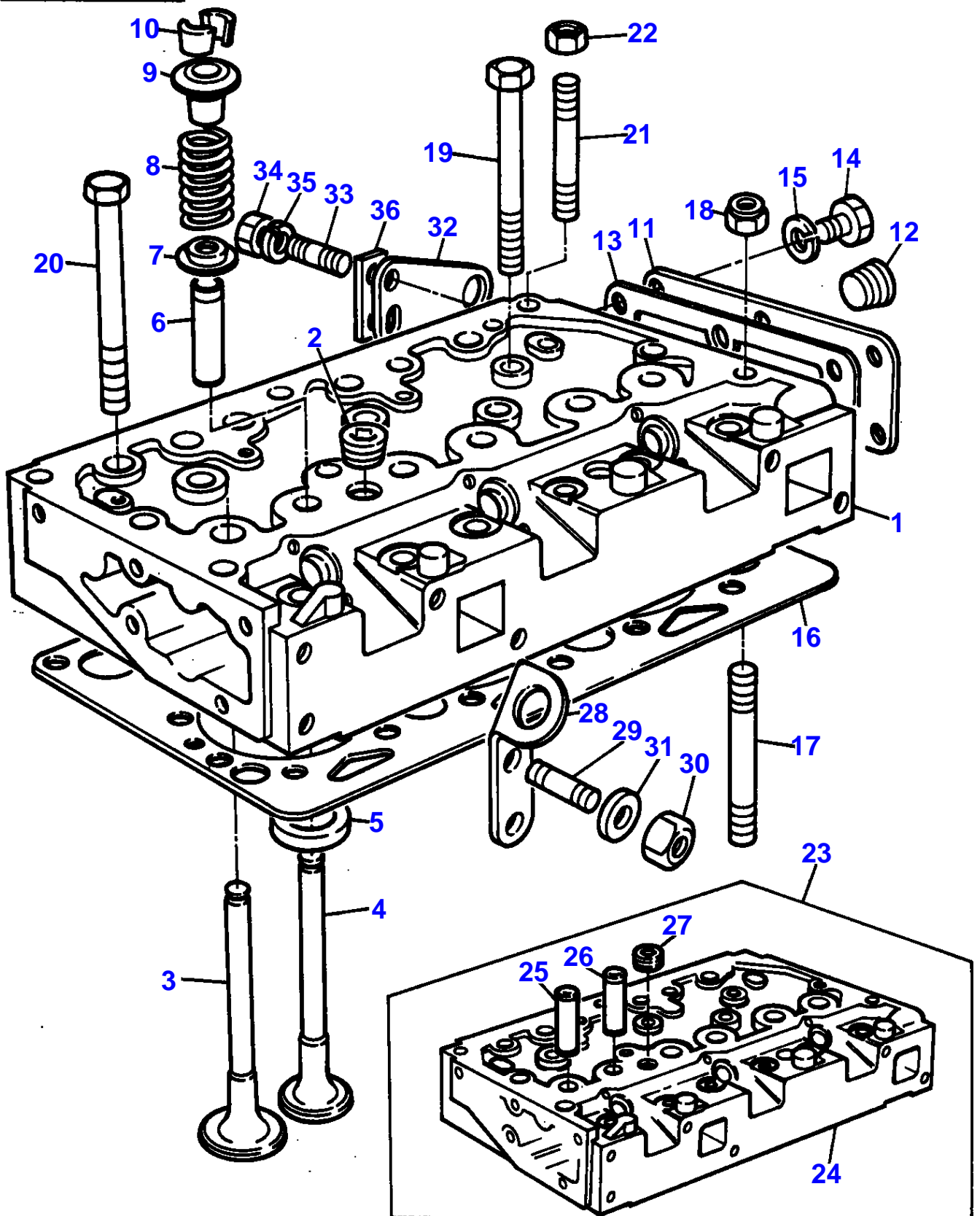
1637076

CRANKSHAFT, PISTONS AND CONNECTING RODS - AD3.152 ENGINE

4

Item	Part Number	Qty	Description	Comments
34	0410236	1	Starter Ring	(32) 115T
35	0096803	6	Bolt	
36	33117127	6	Washer	Repairs and replaces 33117121
				(A) PRE-FINISHED
				(B) UNTOPPED
				(C) PRE-TOPPED
				(D) SLIP FIT
				(E) PRESS FIT
				(F) NOT FITTED ON THIS APPLICATION
				(G) REPLACES 31328241 IN ENGINE SETS ONLY(QTY 2).

C 0566-15M-A



CYLINDER HEAD - AD3.152 ENGINE

Item	Part Number	Qty	Description	Comments
				AD3.152 ENGINE
1	ZZ 80082	1	Kit, Cyl. Head	Repairs and replaces ZZ80025
2	2431154	2	Plug	(1)
3	31431681	3	Valve Inlet	(1)
4	3142A081	3	Valve Exhaust	(1)
				Repairs and replaces 31431011
5	33124428	3	Insert	
6	33261723	6	Guide	(1)
7	33415133	6	Washer	(1)
8	0780006	6	Spring	(1)
9	33423148	6	Cap	(1)
10	0230001	12	Cotter	(1)
				(A)
11	37532481	1	Plate	(1)
				(B)
11	3612M002	1	Plate	(C)
12	2431A054	1	Plug	(1)
				(D)
13	0490485	1	Joint	(1)
14	0746255	6	Setscrew	(1)
				(E)
14	0746254	6	Setscrew	(F)
15	0920053	6	Washer	(1)
16	3681E015	1	Gasket	Repairs and replaces 3681E006
17	32524132	2	Stud	
18	33221329	2	Nut	
19	32181457	4	Screw	
20	32181458	9	Screw	
21	32524148	3	Stud	
22	33221329	3	Nut	
23	ZZ 80017	X	Kit, Cyl. Head	MINOR ASSY.
24		1	Head	(23)
				Not serviced, order REF.23
25	33261723	4	Guide	(23)
26	33261723	4	Guide	(23)
27	2431154	2	Plug	(23)
28	36456321	1	Plate	
29	0826462	2	Stud	
30	0576051	2	Nut	
31	0920054	2	Washer	
32	36237171	1	Plate	
33	0826463	2	Stud	
34	0576051	2	Nut	
35	0920054	2	Washer	
36	3611E003	1	Spacer	

(A)  
SERVICED IN PAIRS

(B)  
REMOVE AND FIT 3612M002

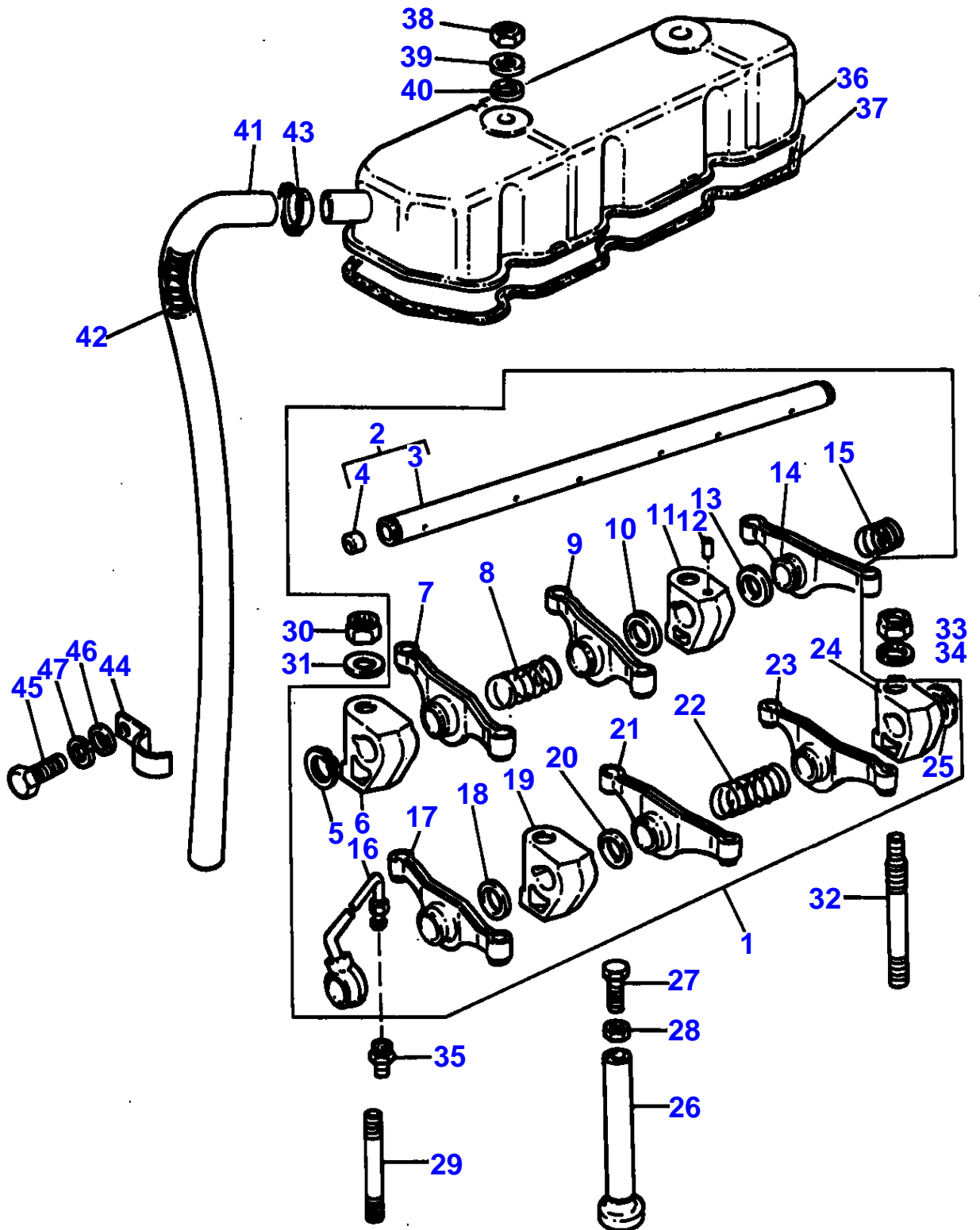
(C)  
FITTED IN PLACE OF COVER SUPPLIED WITH CYLINDER HEAD ASSEMBLY

(D)  
NOT REQUIRED WHEN CYLINDER HEAD REAR END COVER 361 2M002 IS FITTED

(E)  
REMOVE AND FIT 0746254-(6 OFF)

(F)  
FITTED WITH PLATE 3612M002 IN PLACE OF 0746255(6 OFF)-SUPPLIED WITH CYLINDER HEAD ASSEMBLY.

C-0569-11M-A



**Buy Now**



Our support email:

[ebooklibonline@outlook.com](mailto:ebooklibonline@outlook.com)