

Page Title	Page Number
ENGINE AND ACCESSORIES	2
CYLINDER BLOCK	4
ROCKER ARM	8
CYLINDER HEAD	10
CRANKSHAFT	14
CYLINDER HEAD COVER	18
TIMING GEAR	20
JOINTS AND GASKETS	22
WATER PUMP	24
AIR INDUCTION	28
FUEL PIPINGS	30
FUEL FILTER	32
FUEL OIL LIFT PUMP	34
FUEL INJECTION EQUIPMENT	36
LUBRICATION OIL SYSTEM	38
LUBRICATING OIL FILTER	42
AUXILIARY DRIVE	44
BATTERY	46
ELECTRICAL EQUIPMENT	48
ALTERNATOR-MOTOROLA - UP TO SERIAL NO S 137200	50
ALTERNATOR-MOTOROLA - UP TO SERIAL NO	52
ALTERNATOR-MOTOROLA - FROM SERIAL NO S 137201	53C
STARTER-LUCAS	54
COOLING SYSTEM - INSTALLATION CONDITIONED AIR ENGINE	56
COOLING SYSTEM - COMPRESSOR	58
RADIATOR - ASSEMBLING	60
RADIATOR - FEEDING	62
FUEL TANK AND ATTACHMENTS	64
FUEL TANK AND ATTACHMENTS - FUEL TUBE	66
AIR FILTER - EQUIPEMENT	68
AIR FILTER - EQUIPMENT WITH ETHER	70
AIR FILTER	72
ETHER START SYSTEM	73A
EXHAUST SYSTEM	74
THROTTLE CONTROLS - HAND THROTTLE	76
THROTTLE CONTROLS - FOOTTHROTTLE	78
THROTTLE CONTROLS - INJECTION PUMP BEADCORE	80
FRONT SPACER - UP TO SERIAL NO S 141210	82
CLUTCH	84
CLUTCH PEDAL AND LINKAGE - PEDAL	86
CLUTCH PEDAL AND LINKAGE	88
MAIN CYLINDER BRAKE	90
16 SPEED TRANSMISSION	92
16 SPEED TRANSMISSION-HOUSING - UP TO SERIAL NO	94
16 SPEED TRANSMISSION-COVER	96
16 SPEED TRANSMISSION-COVER - GAMMA 2 CLUTCH SHAFT	98
16 SPEED TRANSMISSION-COVER - GAMMA 2 COVER	100
16 SPEED TRANSMISSION-COVER - GAMMA 2 CLUTCH AND REDUCER	102
16 SPEED TRANSMISSION-COVER - GAMMA 2 MAIN SHAFT	104
TRANSMISSION-GEAR TRAIN - OUTPUT SHAFT	106
TRANSMISSION-COUNTERSHAFT	108
TRANSMISSION-MAIN SHAFT	110
TRANSMISSION-FORK AND GEAR SHIFT	112

TABLE OF CONTENT

16 SPEED TRANSMISSION-SHIFT CONTROL - SHIFT CONTROL	114
16 SPEED TRANSMISSION-EXTERNAL CONTROL - EXTERNAL CONTROL	116
HYDRAULIC VALVE	118
PTO-DRIVE MECHANISM-TWO SPEED - TWO SPEED	120
PTO-CONTROL - UP TO SERIAL NO	122
PTO-CONTROL - FROM SERIAL NO	123A
IPTO-CLUTCH AND VALVES	124
REAR AXLE CENTRE HOUSING	126
REAR AXLE-DIFFERENTIAL	128
REAR AXLE-DIFFERENTIAL - WITH MECHANICAL BLOKING	130
REAR AXLE-DIFFERENTIAL LOCK MECHANISM - 2 WHEEL DRIVE	132
REAR AXLE-DIFFERENTIAL LOCK MECHANISM - 4 WHEEL DRIVE	134
REAR AXLE-DIFFERENTIAL LOCK MECHANISM - 4 WHEEL DRIVE	136
REAR AXLE-DIFFERENTIAL LOCK MECHANISM	138
REAR AXLE-HOUSING	140
HYDRAULIC BRAKE CONTROL - PEDALS- UP TO SERIAL NO	142
HYDRAULIC BRAKE CONTROL - PEDALS- FROM SERIAL NO	143A
HYDRAULIC BRAKE CONTROL-PIPING	144
HYDRAULIC BRAKE CONTROL - WITHOUT TRAILER BRAKING- GERMANY- UP TO SERIAL NO	146
HYDRAULIC BRAKE CONTROL - WITHOUT TRAILER BRAKING- FROM SERIAL NO	148
HANDBRAKE - UP TO SERIAL NO	150
HANDBRAKE - TOP CONTROL- UP TO SERIAL NO J276200	152
HANDBRAKE - TOP CONTROL- FROM SERIAL NO J 276201	153A
HANDBRAKE - BOTTOM CONTROL- FROM SERIAL NO	154
REAR WHEELS	156
REAR WHEELS	158
FRONT WHEELS	160
FRONT WHEELS - 4 WHEEL DRIVE	162
FRONT WHEELS - WEIGHT- 2 WHELL DRIVE	164
AXLE SUPPORT - VENTRAL WEIGHT- 2 WHEEL DRIVE	165A
AXLE SUPPORT	166
FRONT AXLE-2 WHEEL DRIVE	168
STEERING - STEERING WHEEL	170
HYDROSTATIC- STEERING	174
HYDROSTATIC STEERING-2 WHEEL DRIVE - BOTTOM LINES	176
HYDROSTATIC- STEERING-4 WHEEL DRIVE - ABOVE LIGNE	178
STEERING UNIT-GEMMER - UP TO SERIAL NO	180
STEERING UNIT-GEMMER - FROM SERIAL NO	181A
STEERING CYLINDER-2 WHEEL DRIVE	182
STEERING CYLINDER-4 WHEEL DRIVE	184
HYDRAULIC PUMP-COVER - RIGHT SIDE INSIDE	186
HYDRAULIC PUMP	190
HYDRAULIC PUMP-COVER - RIGHT SIDE OUT	192
REAR AXLE-DIFFERENTIAL LOCK MECHANISM - VALVE- 2 WHEEL DRIVE	196
REAR AXLE-DIFFERENTIAL LOCK MECHANISM - 2 DOOR - C TYPE	198
TRAILER BRAKE VALVE	200
HYDRAULIC VALVE	202
OUTSIDE FILTER - INSTALLATION	204
OUTSIDE FILTER	206
HYDRAULIC VALVE	208
AUXILIARY HYDRAULICS - TOP CONTROL	210
AUXILIARY HYDRAULICS - BOTTOM CONTROL	212
DISTRIBUTOR	214

TABLE OF CONTENT

HOSES AND COUPLINGS	216
OIL COOLER - FRONT PIPES	218
OIL COOLER - REAR PIPES	220
OIL COOLER - REAR PIPES- ELECTRONIC DRAFT CONTROL	221A
OIL COOLER - ELECTRONIC DRAFT CONTROL	221C
HYDRAULIC LIFT COVER	222
HYDRAULIC LIFT COVER - ELECTRONIC DRAFT CONTROL	223A
HYDRAULIC LIFT ARRANGEMENT - ELECTRONIC DRAFT CONTROL	223C
HYDRAULIC LIFT COVER - COVER CONTROL	224
AUXILIARY HYDRAULIC VALVES	226
HYDRAULIC LIFT ARRANGEMENT	228
DRAFT AND POSITION CONTROLS	230
DRAFT AND POSITION CONTROLS - ARMS AND LEVERS	232
DRAFT AND POSITION CONTROLS - ELECTRONIC DRAFT CONTROL	233A
TOP LINKS - WITH BALL	234
TOP LINKS - WITH HOOK	236
TOP LINKS - ELECTRONIC DRAFT CONTROL	237A
HYDRAULIC LIFT CYLINDER	238
LOWER LINKS - WITH BALL	240
LOWER LINKS - WITH HOOK	242
LOWER LINKS - AUTOMATIC HOOK	244
STABILIZERS	245A
SWINGING DRAWBAR	246
PTO-CONTROL - GUARD	248
FRONT HITCH	250
HITCH-CRAMER	251A
HITCH - BRACKETS AND GUARDS	251C
SHEET METAL-GRILLE	256
SHEET METAL-HOOD	260
FENDER EXTENSION - GERMANY	262
SHEET METAL - MISCELLANEOUS	264
TRACTOR CAB-CAB AND WINDOWS ONEDOOR	266
SHEET METAL - PLATFORM	268
TRACTOR CAB - WINDSCREEN	270
TRACTOR CAB-CAB DOORS ONE DOOR - DOOR	272
TRACTOR CAB-CAB DOORS ONE DOOR - HANDLE	274
TRACTOR CAB-CAB DOORS ONE DOOR - HANDLE	276
TRACTOR CAB-CAB DOORS ONE DOOR - MISCELLANEOUS	278
TRACTOR CAB-WINDOWS - RIGHT WINDOWS	280
TRACTOR CAB-WINDOWS - MISCELLANEOUS- UP TO SERIAL NO J 237207	282
TRACTOR CAB-WINDOWS - REAR WINDON	284
TRACTOR CAB-CAB MOUNTINGS AND STEP / STAIRS	286
TRACTOR CAB-CAB MOUNTINGS AND STEP / STAIRS - WHEEL SHIM	288
WINDSCREEN WIPER	290
SCREEN WIPER MOTOR	292
WINDSCREEN WASHER	294
SEAT - PEDESTAL	296
SEAT-SABLE	297A
SEAT	298
SEAT-SABLE - UP TO SERIAL NO	300
SEAT-SABLE	302
SECONDARY SEAT	304
TRACTOR CAB-CAB INSULATION	306
TRACTOR CAB-CAB HEATER - UP TO SERIAL NO J 311209	308
TRACTOR CAB-CAB HEATER - HEATER- FROM SERIAL NO J 311210	309A

TABLE OF CONTENT

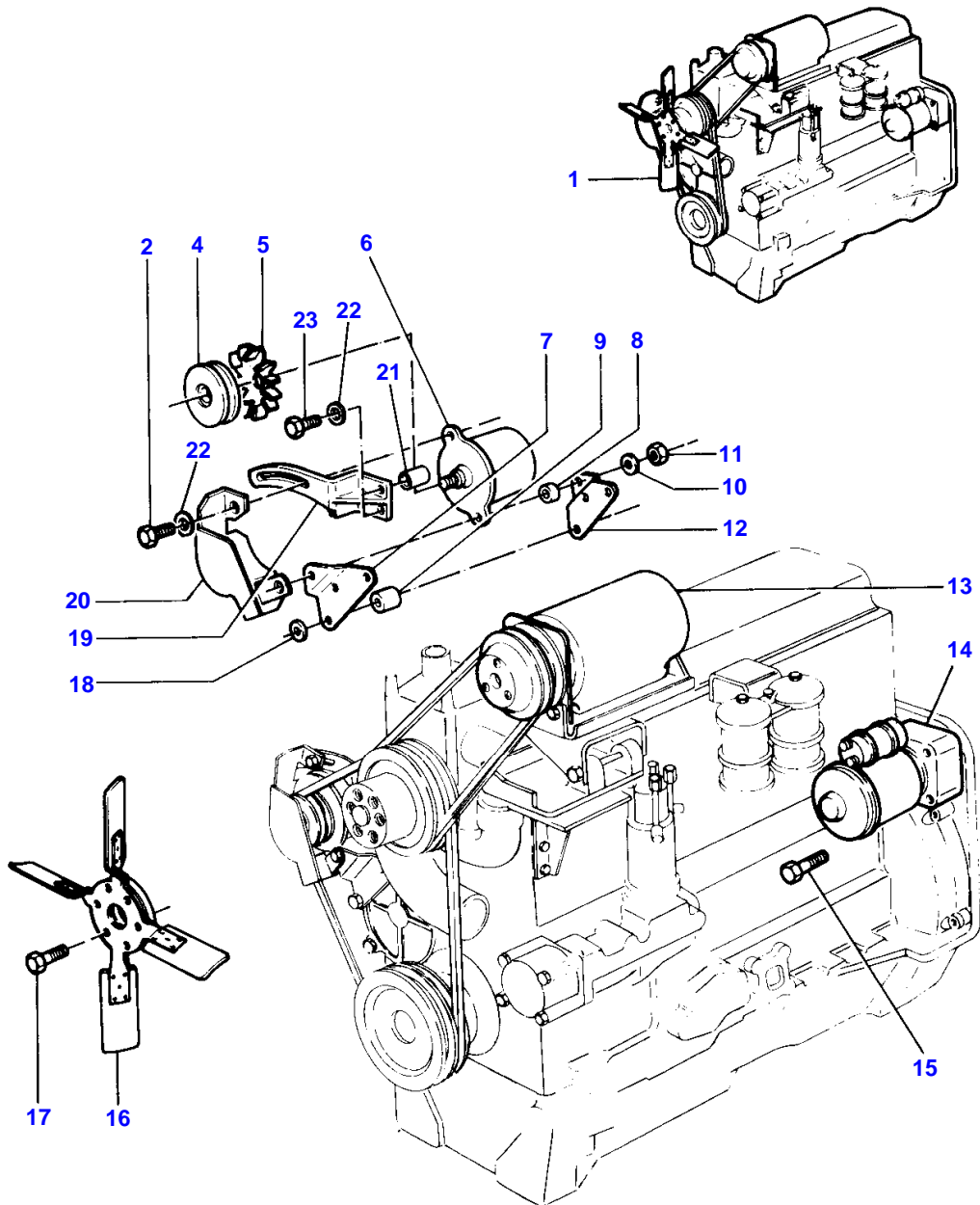
TRACTOR CAB-CAB HEATER - HEATER - FROM SERIAL NO 2 311119	302A
TRACTOR CAB-VENTILATION	310
TRACTOR CAB-ROOF EQUIPMENT	312
SHEET METAL-INSTRUMENT PANEL - EQUIPMENT	314
SHEET METAL-INSTRUMENT PANEL - INSTRUMENT	316
SHEET METAL-INSTRUMENT PANEL - INSTRUMENT	318
SHEET METAL-PANEL WIRING - MAIN HARNESS	322
SHEET METAL-PANEL WIRING - LIGHT HARNESS	324
TRACTOR CAB - CONTROL BOX AUTOTRONIC	326
TRACTOR CAB - ELECTRONIC CONSOLE	327A
TRACTOR CAB - ELECTRONIC CONSOLE	327C
TRACTOR CAB-CAB MISCELLANEOUS	328
TRACTOR CAB-CAB MISCELLANEOUS - MIRROR	330
TRACTOR CAB-ROOF EQUIPMENT - ELECTRICITY	332
FRONT LIGHTING EQUIPMENT	334
REAR LIGHTING EQUIPMENT - UP TO SERIAL NO	338
REAR LIGHTING EQUIPMENT - FROM SERIAL NO	341A
LIGHTING KITS - WORKING LIGHT REAR	342
LIGHTING KITS - WORKING LIGHT FRONT	344
LIGHTING KITS - WORKING LIGHT	346
LIGHTING KITS - DANGER PANEL- UP TO SERIAL NO A 135200	348
LIGHTING KITS - UP TO SERIAL NO	350
LIGHTING KITS - DANGER PANEL- FROM SERIAL NO	351A
FRONT AXLE HYDRAULIC CONTROL	352
FRONT AXLE HYDRAULIC CONTROL - ELECTRONIC DRAFT CONTROL	353A
TRANSFER GEAR BOX	354
FRONT LIVE AXLE - SUPPORT	356
GUARD AND TRANSMISSION SHAFT	358
FRONT LIVE AXLE	360
FRONT AXLE HOUSING-4 WHEEL DRIVE	362
FRONT AXLE-DIFFERENTIAL-4 WHEEL DRIVE - HOUSING	364
FRONT AXLE-DIFFERENTIAL-4 WHEEL DRIVE - GEAR	366
FRONT AXLE FINAL DRIVE-4 WHEEL DRIVE	368

2

MOTEUR ET ACCESSOIRES
MOTOR UND ZUBEHOER
MOTORE ED ACCESSORI
MOTOR Y ACCESORIOS
ENGINE AND ACCESSORIES

00101027

1 0010 035



1-0010-035

MASSEY FERGUSON**MF 2620 TRACTOR, ->| 271212 - 1637077****1637077****ENGINE AND ACCESSORIES****2**

Item	Part Number	Qty	Description	Comments
1	3052227M91	1	Engine	
2	353679X1	1	Screw Unc	
4	1699137M91	1	Pulley	
5	1618469M1	1	Fan	Up to Serial or Engine Number
	3045705M1	1	Fan	From Serial or Engine Number
6		1	Alternator	(A) See Page - Reference Number 50/1 See Page - Reference Number 53C/1
6		1	Alternator	(B) See Page - Reference Number 52/1 See Page - Reference Number 53C/1
7	3040961M1	1	Support	
8	3040964M2	1	Spacer	
9	3040962M1	3	Spacer	
10	339376X1	1	Lock Washer	
11	339402X1	1	Nut Metric	
12	3040963M1	1	Bearer	
13		1	Compressor	See Page - Reference Number 58/1
14		1	Startermotor	See Page - Reference Number 54/1
15	353693X1	3	Screw Unc	
16	31258207	1	Fan	
17	354263X1	6	Bolt Unc	
18	353755X1	3	Washer	
19	3040944M92	1	Tensioner	
20	3042320M91	1	Cowl	
21	3040965M1	2	Spacer	
22	353446X1	3	Lock Washer	
23	353525X1	2	Bolt Unf	

(A)
TRACTOR WITH CAB

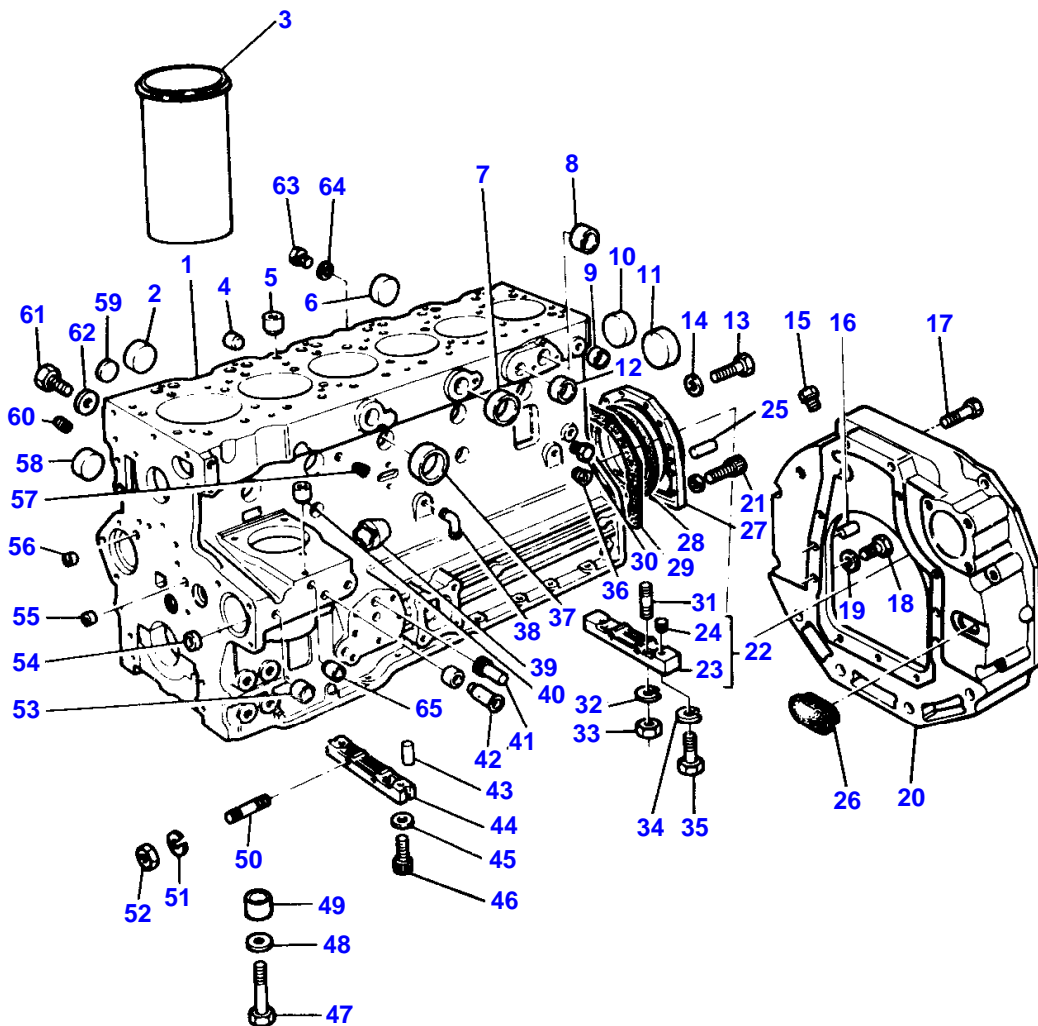
(B)
TRACTOR WITH PLATFORM

4

BLOC CYLINDRES
 ZYLINDERBLOCK
 BLOCCO CILINDRI
 BLOQUE DE CILINDROS
 CYLINDER BLOCK

00501019

1 0050 021



1-0050-021

CYLINDER BLOCK

Item	Part Number	Qty	Description	Comments
1	63114	1	Cylinder Block	
2	0650618	6	Plug	(1)
3	31358393	6	Liner	(1) (A)
3	31358394	6	Liner	(B)
4	32417133	1	Plug	
5	32417134	1	Plug	
6	0650618	5	Plug	
7	0650710	4	Plug	
8	0650618	1	Plug	
9	0650563	1	Plug	
10	0650618	2	Plug	(1)
11	32416105	1	Plug	
12	0650664	1	Plug	(1)
13	0746211	10	Bolt	
14	0920003	10	Washer	
15	2487004	1	Plug	
16	32455119	2	Dowel	
17	2222157	2	Screw	
18	0746462	6	Bolt	
19	33115129	6	Washer	
20	37148191	1	Plate	
21	2172530	2	Capscrew	
	33112111	2	Washer	
22	41474004	1	Bridge Piece	
23		1	Spacer	(22) Not serviced, order 41474004
24	2137467	2	Insert	(22)
25	0350009	2	Dowel	
26	37813113	1	Plug	
27	37513851	1	Housing	
28	2415391	1	Seal	
29	36817157	1	Joint	
30	32161114	2	Plug	
31	0826287	2	Stud	
32	0920053	2	Washer	
33	0576002	2	Nut	
34	0920521	2	Washer	
35	2176369	2	Screw	
36	2431131	1	Plug	
37	32417155	5	Plug	(1)
38	0201568	1	Connection	
39	32813108	1	Cover	
40	32417134	2	Plug	
41	0650586	2	Plug	
42	33435133	1	Tube	
43	32811408	4	Joint	
44	36277831	1	Bridge Piece	
45	0920521	2	Washer	
46	2176369	2	Screw	
47	32166329	14	Bolt	(1)
48	33121418	14	Washer	
49	33142111	14	Thimble	(1)
50	0826201	2	Stud	
51	0920053	2	Washer	
52	0576002	2	Nut	
53	32417127	3	Plug	
54	32417115	1	Plug	
55	0650566	2	Plug	
56		2	Not Used	
57		1	Not Used	
58	0650710	1	Plug	
59	0650618	1	Plug	
60		1	Not Used	
61	2232200	3	Screw	
62	2411107	3	Washer	
63		1	Not Used	
64		1	Not Used	
65		1	Not Used	

MASSEY FERGUSON

MF 2620 TRACTOR, ->| 271212 - 1637077

1637077

CYLINDER BLOCK

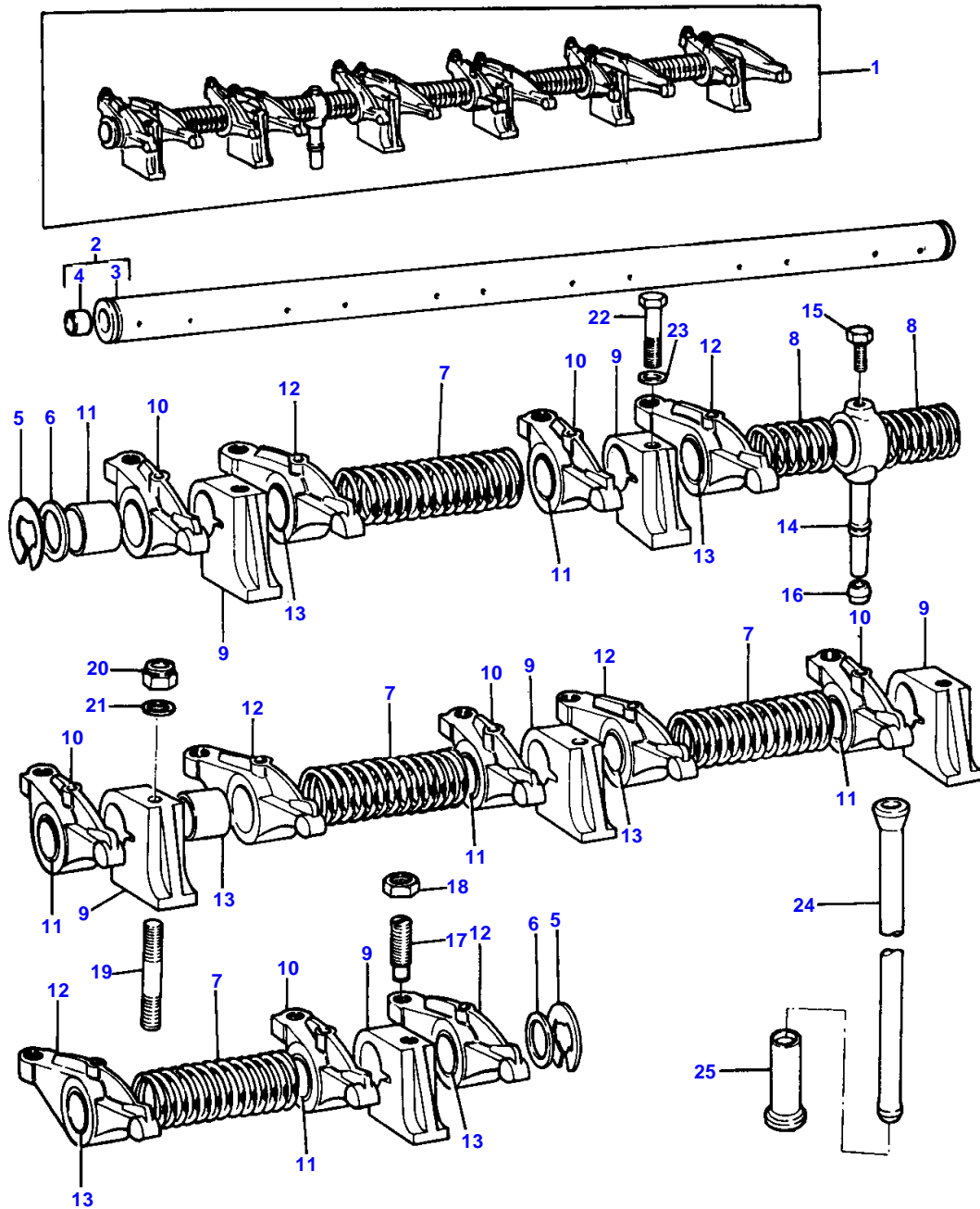
4

Item	Part Number	Qty	Description	Comments
				(A) PRESS FIT
				(B) SLIP FIT

8
 CULBUTEURS
 KIPPHEBEL
 ALBERO A BILANCIERI
 BALANCINES
 ROCKER ARM

00701003

1 0070 001



1-0070-001

ROCKER ARM

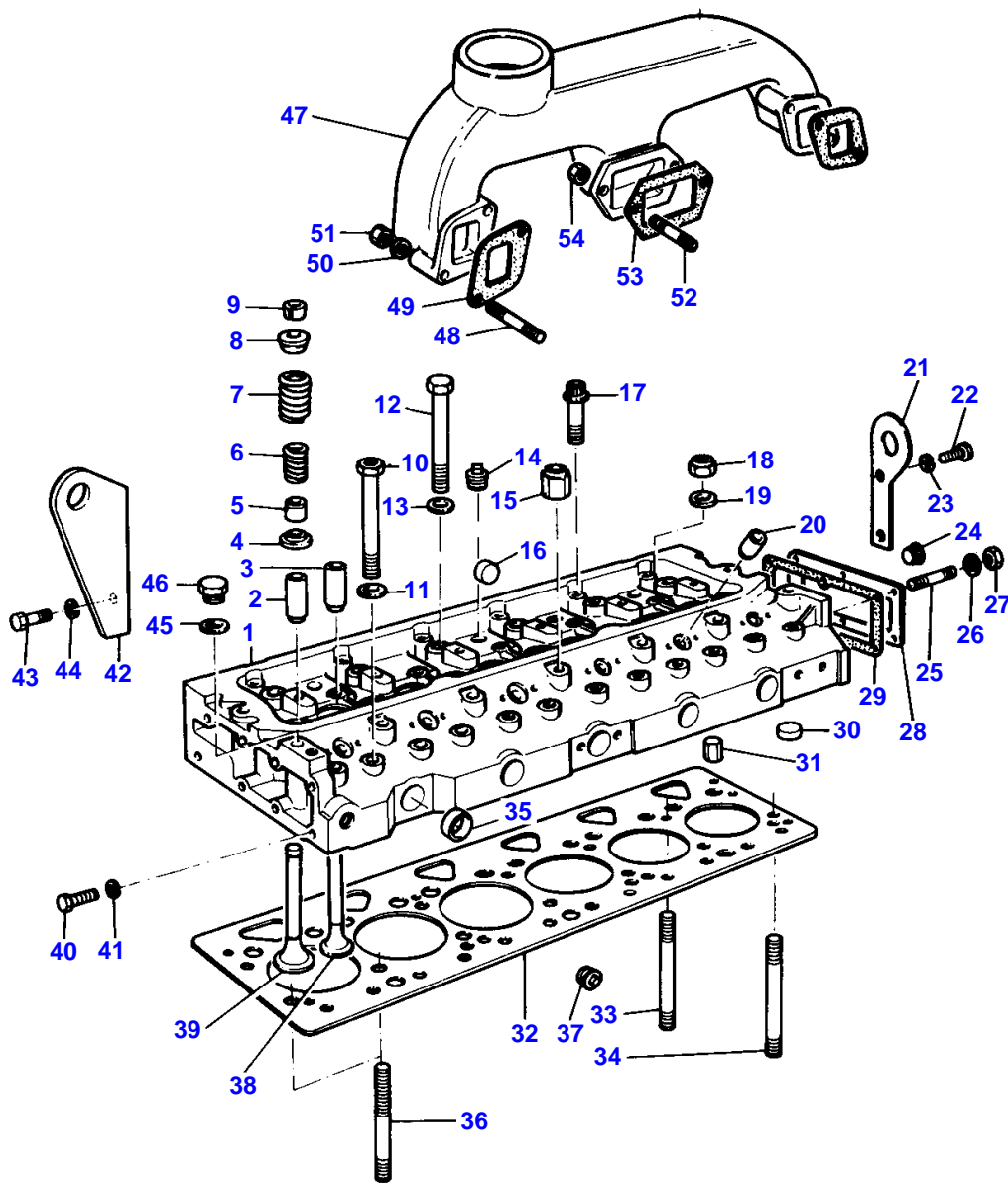
Item	Part Number	Qty	Description	Comments
1	68470	1	Rocker Shaft	
2	58768	1	Rocker Shaft	(1)
3		1	Rocker Shaft	Not serviced, order 2
4	0650507	2	Plug	(2)
5	0170151	2	Circlip	(1)
6	33117415	2	Washer	(1)
7	31744123	4	Spring	(1)
8	31743108	2	Spring	(1)
9	37521431	6	Bracket	(1)
10	41151468	6	Lever	(1) Right Hand
11	2511425	1	Bush	(10)
12	41151467	6	Lever	(1) Left Hand
13	2511425	1	Bush	(12)
14	35511111	1	Pipe	(1)
15	0726504	1	Setscrew	(1)
16	33811113	1	Olive	
17	0720579	12	Screw	(1)
18	0576052	12	Nut	(1)
19	2215274	4	Stud	
20	0576054	4	Nut	
21	33116111	4	Washer	
22	0096636	2	Bolt	
23	33116111	2	Washer	
24	31434307	12	Pushrod	
25	31434163	12	Tappet	

10

CULASSE
 ZYLINDERKOPF
 TESTATA
 CULATA
 CYLINDER HEAD

00751015

1 0075 014



1-0075-014

CYLINDER HEAD

Item	Part Number	Qty	Description	Comments
1	68160	1	Cylinder Head	
2	33261732	6	Guide	(1)
3	33261754	6	Guide	(1)
4	33415118	12	Washer	(1)
5	33817125	12	Seal	(1)
6	31744131	12	Spring	(1)
7	31745121	12	Spring	(1)
8	33423122	12	Cap	(1)
9	33173108	12	Cotter	(1) (A)
10	32181424	12	Screw	
11	33117122	12	Washer	
12	32181453	6	Screw	
13	33117122	6	Washer	
14	2431154	3	Plug	(1)
15	33287318	2	Nut	
16	32417127	6	Plug	(1)
17	2172142	6	Bolt	
18	33221316	12	Nut	
19	33117122	14	Washer	
20	33242112	6	Sleeve	
21	36237734	1	Bracket	
22	0746453	2	Setscrew	
23	0920054	2	Washer	
24	2431154	1	Plug	
25	0826244	6	Stud	
26	0920053	6	Washer	
27	0576002	6	Nut	
28	37532113	1	Plate	
29	0490485	1	Joint	
30	32417122	13	Plug	
31	32461323	2	Dowel	
32	36812607	1	Gasket	
33	32526322	9	Stud	
34	32526321	3	Stud	
35	0650563	4	Plug	(1)
36	32526319	2	Stud	
37	2431154	1	Plug	
38	31431315	6	Valve Inlet	(1)
39	31431961	6	Valve Exhaust	(1)
40	0746453	2	Setscrew	
41	0920054	2	Washer	
42	36445322	1	Plate	
43	0746453	2	Setscrew	
44	0920054	2	Washer	
45	2411107	1	Washer	
46	0650203	1	Plug	
47	37782941	1	Manifold	
48	0826504	4	Stud	
49	36862124	2	Joint	
50	0920469	6	Spacer	
51	2188135	4	Nut	
52	0826510	2	Stud	
53	36862129	1	Joint	
54	2188135	2	Nut	

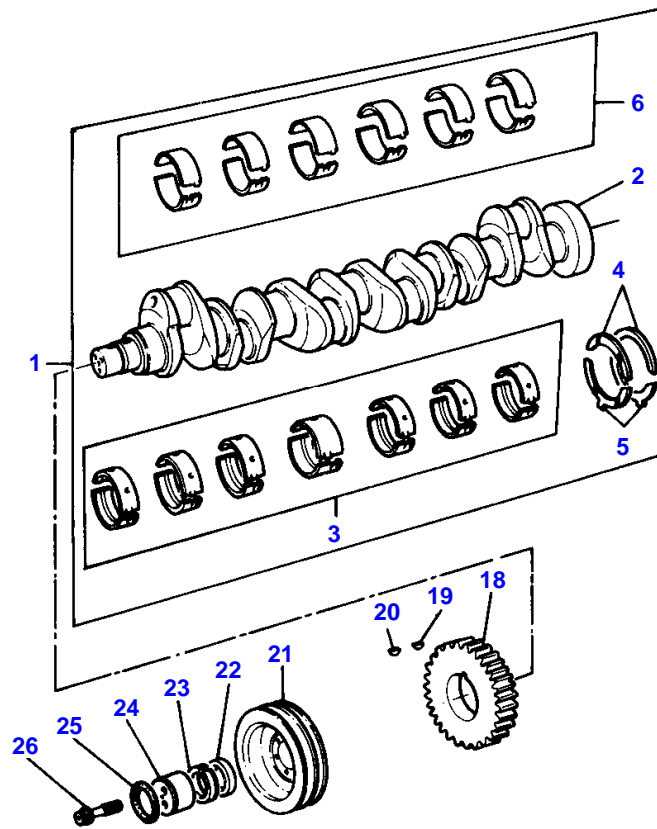
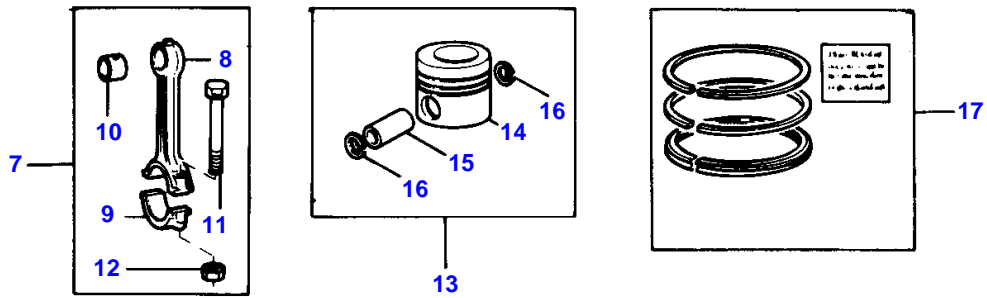
(A)
SERVICED IN PAIRS

14

VILEBREQUIN
 KURBELWELLE
 ALBERO A MANOVELLA
 CIGUENAL
 CRANKSHAFT

00801014

1 0080 013



1-0080-013

Buy Now



Our support email:

ebooklibonline@outlook.com