

Page Title	Page Number
ENGINE AND ACCESSORIES	2
CYLINDER BLOCK	4
CRANKSHAFT	8
CYLINDER HEAD	12
CYLINDER HEAD COVER	14
ROCKER ARM	16
AIR INDUCTION	18
TIMING GEAR	20
LUBRICATING OIL SYSTEM	22
LUBRICATING OIL FILTER	24
WATER PUMP	26
FUEL PIPINGS	28
FUEL OIL LIFT PUMP	32
FUEL FILTER	34
FUEL INJECTION EQUIPMENT	36
TURBOCHARGER	38
TURBOCHARGER - PIPE	40
TURBOCHARGER - BRACKET	42
LUBRICATING OIL COOLER	44
AUXILIARY DRIVE	46
JOINTS AND GASKETS	48
ALTERNATOR POSITIONER	50
ALTERNATOR-LUCAS	52
STARTER-LUCAS	54
ELECTRICAL EQUIPMENT	56
RADIATOR	58
RADIATOR - TUBE	60
ROTATING AIR INTAKE	62
FUEL TANK AND ATTACHMENTS - 200 LITRES	64
FUEL TANK AND ATTACHMENTS - 300 L	68
FUEL TANK AND ATTACHMENTS - ATTACHEMENT TANK 300L	69A
FUEL TANK AND ATTACHMENTS - ATTACHEMENT TANK 300L	69C
FUEL TANK AND ATTACHMENTS - TUBE	70
FUEL TANK AND ATTACHMENTS - COWL	72
AIR FILTER	74
AIR FILTER - DETAIL- DONALDSON	76
AIR FILTER - DETAIL- PROUST	78
AIR PRE FILTER	80
EXHAUST SYSTEM	82
ENGINE FRAME	84
MOTOR COVER	86
MOTOR COVER - CONTINUED	90
KNIFE	92
KNIFE - 14'	96
WOBBLE DRIVE	100
TABLE DRIVE - 12'	102
TABLE DRIVE - 14'	106
REEL CONTROL HEADS AND TINE SUPPORT BAR	110
REEL CONTROL HEADS AND TINE SUPPORT BAR - 14'	112
REEL DRIVING SHAFTS AND BEARING SUPPORTS	114
REEL DRIVING SHAFTS AND BEARING SUPPORTS - 14'	116
CONVEYOR ASSEMBLY APRON AND DRIVES - UNIVERSAL TABLE- 12'	118
CONVEYOR ASSEMBLY APRON AND DRIVES - UNIVERSAL TABLE- 14'	122
CONVEYOR ASSEMBLY TENSION ROLLER - UNIVERSAL TABLE- 12'-14'	126
REEL ARMS AND SLOP ASSEMBLIES	128
AUGER	130
AUGER - 14'	136
TABLE	142
TABLE - 14'	146
DIVIDERS SLOPING	150
DIVIDERS HARPOON	152
ATHC - MECHANICAL- 10'- NEW MOUNTING	156
ATHC - MECHANICAL	158
ATHC - MECHANICAL	159A
ATHC - MECHANICAL	159C
ATHC - MECHANICAL	159E

TABLE OF CONTENT

SENSING FINGERS	160
SENSING FINGERS - UNIVERSAL TABLE- 14'	162
CLUTCH	164
TABLE GUARDS	166
TABLE GUARDS - RAPE	168
TABLE GUARDS - RAPE- 14'	170
TRANSFER FOR TABLE	172
KNIFE - 10'	174
KNIFE - 12'	176
KNIFE - 14'	178
KNIFE - 16'	180
WOBBLE DRIVE	182
TABLE DRIVE - 10'	184
TABLE DRIVE - 12'	188
TABLE DRIVE - 14'	192
TABLE DRIVE - 16'	196
REEL - 10'	200
REEL - 12'	202
REEL - 14'	204
REEL - 16'	206
REEL DRIVING SHAFTS AND BEARING SUPPORTS	207A
REEL DRIVING SHAFTS AND BEARING SUPPORTS	207C
REEL - DRIVING SHAFTS	208
REEL CARRIER	212
AUGER - 10'	214
AUGER - 12'	218
AUGER - 14'	222
AUGER - 16'	226
TABLE - 10'	230
TABLE - 12'	234
TABLE - 14'	238
TABLE - 16'	242
DIVIDERS SLOPING	246
DIVIDER - TALL CROP	248
DIVIDERS HARPOON	250
ATHC - MECHANICAL- 10'	252
ATHC - MECHANICAL- 12'	254
ATHC - MECHANICAL- 14'	256
ATHC - MECHANICAL- 16'	258
SENSING FINGERS - 10'	260
SENSING FINGERS - 12'	262
SENSING FINGERS - 14'	264
SENSING FINGERS - 16'	266
CLUTCH	268
GUARDS-FAN - TABLE	270
TRANSFER FOR TABLE	272
ELEVATOR	274
ELEVATOR - MAIZE-PLATE-ANGLEPIECE	278
ELEVATOR - UPPER SHAFT	280
ELEVATOR - DRUM	282
ELEVATOR - CHAIN	284
CYLINDER HOUSING - LEFT SIDE	286
CYLINDER HOUSING - RIGHT SIDE	288
CYLINDER HOUSING - INTERNAL COMPONENTS	290
CYLINDER HOUSING - DOOR-COVER	292
SEPARATOR CLUTCH - CONTROLS	294
SEPARATOR CLUTCH	298
REAR BEATER - DRIVING	300
REAR BEATER	302
CYLINDER - MODEL 81	304
CYLINDER - MODEL 82	308
CYLINDER - SEED BEATER-MAIZ	312
CYLINDER - DRIVE GEAR BOX	314
CYLINDER - DRIVE	318
CONCAVE - FIXED WIRES	320
CONCAVE - REMOVABLE WIRES-FITTED	324
CONCAVE - REMOVABLE WIRES-NOT FITTED	328
CONCAVE - UNIVERSAL	332

TABLE OF CONTENT

CONTROL LINKAGE - UP TO SERIAL NO	334
CONTROL LINKAGE - FROM SERIAL NO	338
CONTROL LINKAGE - REAR- UP TO SERIAL NO	342
CONTROL LINKAGE - REAR- FROM SERIAL NO	346
STONE STRAP	350
HOOD - HOOD-CASCADE SEPARATOR	352
HOOD - BELT SIGNAL	354
CASCADE SEPARATOR GRAIN ELEVATOR	357A
CASCADE SEPARATOR GRAIN ELEVATOR - UPPER COMPONENTS	357C
CASCADE SEPARATOR GRAIN ELEVATOR - LOWER COMPONENTS	357E
GRAIN ELEVATOR - UPPER COMPONENTS	358
GRAIN ELEVATOR - LOWER COMPONENT	362
CASCADE SEPARATOR - COWL	366
CASCADE SEPARATOR	370
CASCADE SEPARATOR - DRIVE- UP TO SERIAL NO	372
CASCADE SEPARATOR - DRIVE- FROM SERIAL NO	374
CASCADE SEPARATOR - GUARDS	376
SHAKER SHOE - DOUBLE SHOE	378
SHAKER SHOE - TRIPLE SHOE	380
SHAKER SHOE - SHAKER SHOE TRIPLE SHOE ATTACHMENT	381A
SHAKER SHOE - HILLSIDE KIT	381C
PAN - CONTROLS .DOUBLE SHOE	382
PAN - DRIVE-TRIPLE SHOE	386
PAN - DOUBLE SHOE	390
PAN - TRIPLE SHOE	392
PAN - SCREEN-MAIZE	394
SCREEN - DOUBLE SHOE	396
SCREEN - TRIPLE SHOE	398
SCREEN - DRIVE	400
FANNING HILL	402
SHAKER SHOE DRIVE	406
FANNING HILL - GUARDS	408
STRAW WALKER - LOWER DRIVE	410
STRAW WALKER - UPPER DRIVE	412
STRAW WALKER - PATTERN 81	414
STRAW WALKER	416
STRAW WALKER - DIVIDER	418
STRAW WALKER BODY - EXTERNAL COMPONENTS	420
STRAW WALKER BODY - INTERNAL COMPONENTS	424
GLEANINGS ELEVATOR - UPPER COMPONENTS	426
GLEANINGS ELEVATOR - LOWER COMPONENT	428
GLEANINGS ELEVATOR - SLINGER HOUSING	432
RETURN ELEVATOR ALARM ARRANGEMENT	436
ALARM	438
MAIN FRAME - REINFORCEMENT	440
MAIN FRAME - REINFORCEMENT TRACK	444
MAIN FRAME - REINFORCEMENT MODEL 83	448
MAIN FRAME - DOOR	452
MAIN FRAME - MODEL 83- DOOR	454
HOOD	456
GRAIN TANK - LEFT COMPONENT	458
GRAIN TANK - RIGHT COMPONENT	462
GRAIN TANK - LOWER COMPONENT	466
GRAIN TANK - LOWER AUGER	468
AUGER AND PITMAN CRANK	472
GRAIN TANK - EXTENSION	474
GRAIN TANK - EXTENSION-ADJUSTMENT	478
GRAIN TANK - ALARM	480
GRAIN TANK - CHAINS	482
GRAIN ELEVATOR - UPPER COMPONENTS	484
GRAIN ELEVATOR - LOWER COMPONENT	490
GRAIN ELEVATOR - CHAINS	492
UNLOADER DRIVE AND CONTROLS - UP TO SERIAL NO	494
UNLOADER DRIVE AND CONTROLS - FROM SERIAL NO	500
AUGER LOWER	506
AUGER LOWER - LOWER COMPONENT	510
AUGER LOWER - EXTENSION	512
TANK FILLING CONTROL	514

TABLE OF CONTENT

FLYWHEEL	516
TRANSMISSION - RIGHT SIDE	520
TRANSMISSION - LEFT SIDE	526
TRANSMISSION - LEFT SIDE-GUARDS MAIZE	528
COUNTER SHAFT AND CLUTCH	530
COUNTER SHAFT AND CLUTCH - LUBRICATION	534
SECONDARY COUNTERSHAFT	536
TRACTION DRIVE - VARIATOR-WITH CONSTANT MESH TRANSMISSION GEAR BOX	538
TRACTION CLUTCH - WITH CONSTANT MESH TRANSMISSION GER BOX	540
TRACTION CLUTCH	542
TRACTION CLUTCH - CONTROLS-WITH CONSTANT MESH TRANSMISSION GEAR BOX	544
TRACTION CLUTCH - PEDAL	546
TRACTION CLUTCH - HYDRAULIC	548
FRONT AXLE FINAL DRIVE-4 WHEEL DRIVE	550
TRANSMISSION GEAR BOX - COVER-HOUSING- CONSTANT MESH	554
TRANSMISSION GEAR BOX - INPUT SHAFT- CONSTANT MESH	556
TRANSMISSION GEAR BOX - SECOND MOTION SHAFT- CONSTANT MESH	558
TRANSMISSION GEAR BOX - SPEED GEAR- CONSTANT MESH	560
TRANSMISSION GEAR BOX - DIFFERENTIAL- CONSTANT MESH	562
TRANSMISSION GEAR BOX - DRIVE-UPPER COMPONENTS- UP TO SERIAL NO	564
TRANSMISSION GEAR BOX - DRIVE-UPPER COMPONENTS- FROM SERIAL NO	568
TRANSMISSION GEAR BOX - DRIVE-LOWER COMPONENTS	572
FRONT AXLE - WITH CONSTANT MESH GEARBOX	574
HAND BRAKE	578
GEARBOX PARKING BRAKE - DRIVE	580
GEARBOX PARKING BRAKE	582
BRAKES OPERATING - HYDRAULIC	584
BRAKES OPERATING - PEDAL-UP TO SERIAL NO	586
BRAKES OPERATING - PEDAL-FROM NO	588
DRUM BRAKE	592
OPERATORS PLATFORM - MODEL 82	594
OPERATORS PLATFORM - FROM SERIAL S1231700	598
OPERATORS PLATFORM - RAIL-LADDER- UP TO SERIAL NO	602
OPERATORS PLATFORM - RAIL-LADDER- FROM SERIAL NO	606
OPERATORS PLATFORM - RICE TRACK LADDER EXTENSION	609A
SEAT-SABLE	610
SPRING SUPPORT	614
CONTROL PANEL - HOUSING	618
CONTROL PANEL - GUARD LOWER	622
CONTROL PANEL - SOUND INSULATION	624
CONTROL PANEL - LEVER- UP TO SERIAL NO	626
CONTROL PANEL - LEVER- FROM SERIAL NO	632
CONTROL PANEL - LEVER-WITH AUTOMATIC TABLE HEIGT CONTROLS	638
CONTROL PANEL - WITH C-A-H-C- LEVER- UP TO SERIAL NO B 12 191 00	642
CONTROL PANEL - WITH C-A-H-C- LEVER- FROM TO SERIAL NO B 12 191 00	643A
CONTROL PANEL - CABLE- UP TO SERIAL NO	644
CONTROL PANEL - CABLE , FROM SERIAL NU	646
CONTROL PANEL - WITH C-A-H-C- CABLE UP TO SERIAL NO B 12 191 00	647A
CONTROL PANEL - WITH C-A-H-C- CABLE FROM TO SERIAL NO B 12 191 00	647C
ATHC - KIT	647E
INSTRUMENTS - SUPPORT	648
INSTRUMENTS - INSTRUMENTS-SWITCH	650
INSTRUMENTS - JUNCTION	654
CAB - FRONT	656
CAB - REAR	658
CAB - RIGHT	660
CAB - LEFT	662
CAB - CONSOLE	664
CAB - LATCH LADDER	666
CAB - LATCH RAMP-GERMANY	668
CAB - MISCELLANEOUS	670
CAB - FLOOR	672
CAB - WIRING	674
AIR CONDITIONNER-COMPRESSOR - KYSOR	676
AIR CONDITIONNER-COMPRESSOR - KYSOR-BRACKET AND ASSEMBLING	678
AIR CONDITIONNER-CONDENSOR - KYSOR	680
AIR CONDITIONNER-CONDENSOR - BRACKET	684
AIR CONDITIONNER-EVAPORATOR - KYSOR	686

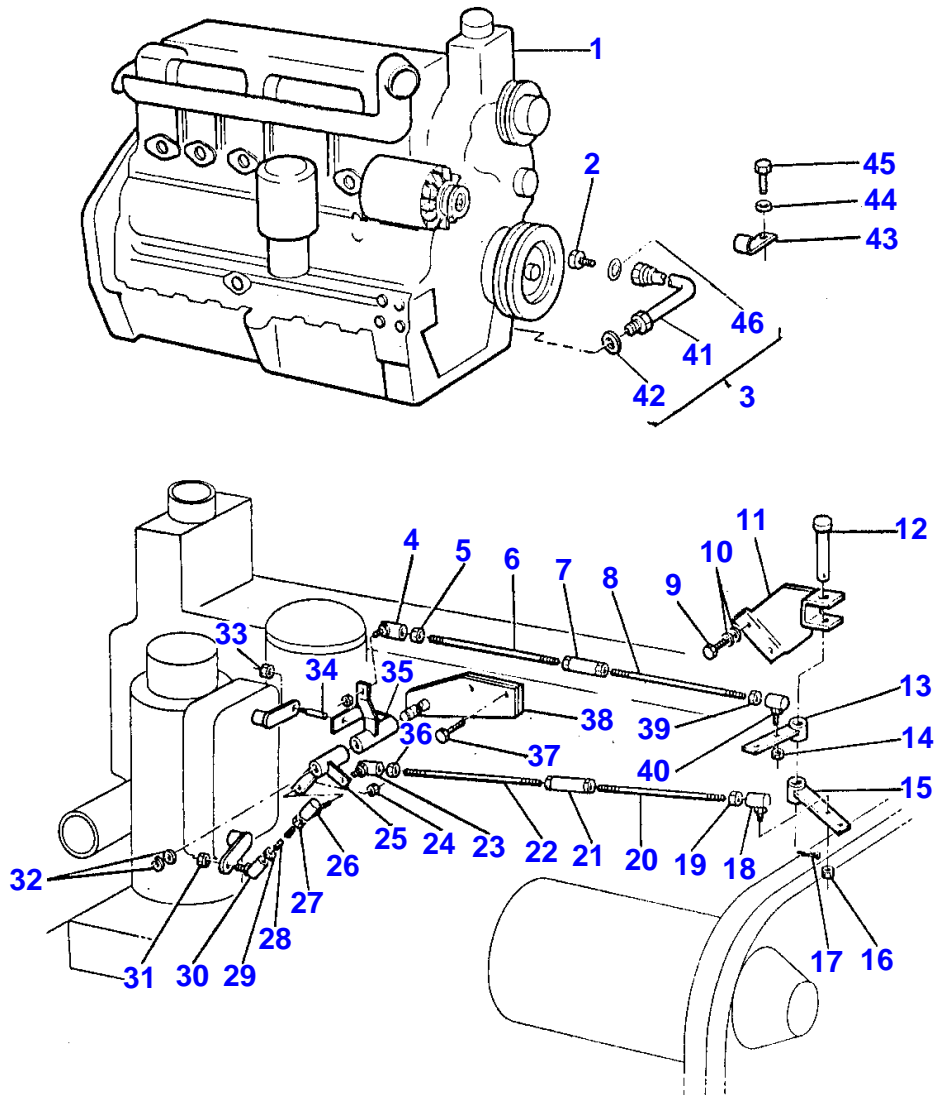
TABLE OF CONTENT

AIR CONDITIONNER-EVAPORATOR - KYSOR	688
STEERING COLUMN	690
STEERING COLUMN - HOUSING	692
STEERING COLUMN - ADJUSTING	694
STEERING PUMP - UP TO SERIAL NO	696
STEERING PUMP	698
SAFETY BLOCK	700
REAR AXLE	702
WHEELS	704
HYDRAULIC CIRCUIT - CONTAINER-PUMP-VALVE	706
HYDRAULIC CIRCUIT - REEL	708
HYDRAULIC CIRCUIT - TABLE LIFT	710
HYDRAULIC CIRCUIT - TABLE LIFT- WITH A.T.H.C	713A
HYDRAULIC CIRCUIT - STEERING	713E
HYDRAULIC CIRCUIT - STEERING	714
HYDRAULIC CIRCUIT - TRACTION VARIATOR	718
HYDRAULIC CIRCUIT - REAR BEATER CLUTCH- UP TO SERIAL NU...	720
HYDRAULIC CIRCUIT - REAR BEATER CLUTCH- FROM SERIAL NU...	721A
HYDRAULIC CIRCUIT - DISCHARGE CHUTE	722
UNLOADER SPOUT ARRANGEMENTS	726
HYDRAULIC PUMP	728
CONTROL VALVE - UPPER COMPONENTS	730
CONTROL VALVE - LOWER COMPONENT	732
RAM FOR TRACTION	734
RAM FOR STEERING	736
RAM FOR TABLE LIFT - RIGHT	738
RAM FOR TABLE LIFT - RIGHT	740
RAM FOR TABLE LIFT - LEFT	742
RAM FOR TABLE LIFT - LEFT	744
REEL HYDROSTATIC DRIVE - NEW PROFILE TABLE- OLD MOUNTING-PULLEY	746
REEL HYDROSTATIC DRIVE - PULLEY	748
REEL HYDROSTATIC DRIVE - NEW PROFILE TABLE- OLD MOUNTING-PINIONS	750
REEL HYDROSTATIC DRIVE - NEW PROFILE TABLE- 10'	754
REEL HYDROSTATIC DRIVE - NEW PROFILE TABLE- 12'	758
REEL HYDROSTATIC DRIVE - NEW PROFILE TABLE- 14'	762
REEL HYDROSTATIC DRIVE - NEW PROFILE TABLE- 16'	766
REEL HYDROSTATIC DRIVE - GEAR	770
REEL HYDROSTATIC DRIVE - UNIVERSAL TABLE- 14'	774
HYDRAULIC MOTOR	778
REEL FORE AND AFT HYDRAULICS - NEW PROFILE TABLE- 10'	780
REEL FORE AND AFT HYDRAULICS - NEW PROFILE TABLE- 12'	782
REEL FORE AND AFT HYDRAULICS - NEW PROFILE TABLE- 14'	784
REEL FORE AND AFT HYDRAULICS - NEW PROFILE TABLE- 16'	786
REEL FORE AND AFT HYDRAULICS	788
REEL FORE AND AFT HYDRAULICS - UNIVERSAL TABLE- 14'	790
REEL LIFT HYDRAULICS - NEW PROFILE TABLE- 10'	792
REEL LIFT HYDRAULICS - NEW PROFILE TABLE- 12'	794
REEL LIFT HYDRAULICS - NEW PROFILE TABLE- 14'	796
REEL LIFT HYDRAULICS - NEW PROFILE TABLE- 16'	798
REEL LIFT HYDRAULICS - UNIVERSAL TABLE- 12'	800
REEL LIFT HYDRAULICS - UNIVERSAL TABLE- 14'	802
REEL HYDRAULIC PUMP AND TANK - NEW PROFILE TABLE- OLD MOUNTING	804
REEL HYDRAULIC PUMP AND TANK	806
HYDRAULIC CIRCUIT - UNIVERSAL TABLE- 12'-14'- THIRD CYLINDER	807A
RAM FOR REEL LIFT - LEFT	808
RAM FOR REEL LIFT	810
RAM FOR REEL LIFT	812
RAM FOR REEL FORE AND AFT ARRANGEMENT - NEW PROFILE TABLE	814
RAM FOR REEL FORE AND AFT ARRANGEMENT	816
RAM FOR REEL FORE AND AFT ARRANGEMENT - UNIVERSAL TABLE	818
LIGHTING - FRONT	820
LIGHTING - LAMP	822
LIGHTING - REAR	824
LIGHTING - SIGNALLING	828
LIGHTING - HAPPER SPOTLIGHT	830
LIGHTING - ROTAING LIGHT-HELLA 45W	832
LIGHTING - ROTAING LIGHT-HELLA 21W	834
LIGHTING - WORKING LIGHT	836

TABLE OF CONTENT

00

MISCELLANEOUS	838
MISCELLANEOUS	839A
MISCELLANEOUS	840
TRANSFERS	842
GUARDS - GERMANY	848
GUARDS - LEFT SIDE	849A
WEIGHT FRAME AND WEIGHTS - WEIGHT	850
ELEVATOR - RICE MACHINES .COWL. FUEL TANK	852
ANTIWIND - RICE MACHINES .COWL. FUEL TANK	854
CYLINDER - RICE MACHINE- CONIC TEETH	856
CYLINDER - RICE MACHINE- TEETH WITH SPATULA	858
CONCAVE - RICE MACHINE- CONICAL TEETH	860
CONCAVE - RICE MACHINE- TEETH WITH SPATULA	862
REAR AXLE - RICE MACHINES .COWL. FUEL TANK	864
REAR AXLE - RICE MACHINES .COWL. FUEL TANK	868
TRACK CHAIN	870
TRACK CHAIN	872
UNDERCARRIAGE	874
UNDERCARRIAGE	876
TRACK CHAIN - GUARDS RICE TRACK	878



1-0010-082

ENGINE AND ACCESSORIES

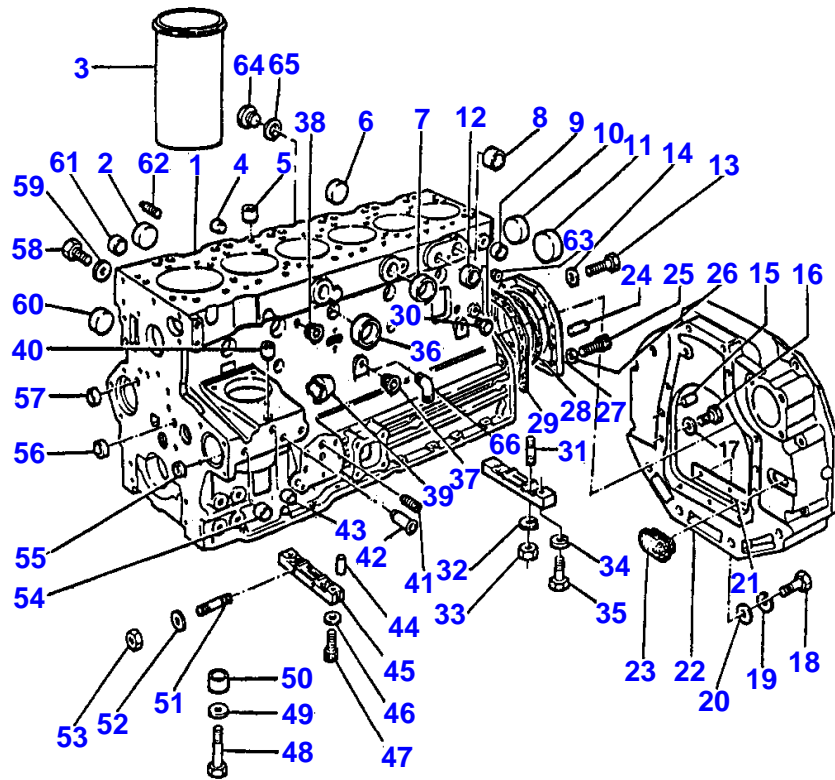
Item	Part Number	Qty	Description	Comments
1	3370975M91	1	Engine	T6.3544
2	356446X1	1	Plug	
3	3371689M91	1	Hydr Hose	
4	3045157M91	1	Toggle	
	353919X1	1	Nut Unf	
5	353919X1	1	Nut Unf	
6	3044979M1	1	Stem	
7	525396M1	1	Buckle	
	338160X1	1	Nut	
8	3049619M1	1	Stem	
9	353517X1	2	Screw Unf	
10	353446X1	2	Lock Washer	
	353755X1	2	Washer	
11	3049017M91	1	Bearer	
12	195612M1	1	Pin	
13	3044960M91	1	Lever	
14	353919X1	1	Nut Unf	
15	3044963M91	1	Lever	
16	353919X1	1	Nut Unf	
17	354057X1	1	Pin	
18	3052849M1	1	Toggle	
19	353919X1	1	Nut Unf	
20	3049619M1	1	Stem	
21	525396M1	1	Buckle	
	338160X1	1	Nut	
22	3044979M1	1	Stem	
23	3052849M1	1	Toggle	
24	353919X1	2	Nut Unf	
25	3044952M91	1	Lever	
26	3052849M1	1	Toggle	
27	353919X1	1	Nut Unf	
28	3044982M1	1	Stem	
29	353919X1	1	Nut Unf	
30	3045150M91	1	Toggle	
31	357515X1	1	Nut Unf	
32	353756X1	1	Washer	
	355848X1	1	Snapping	
33	358656X1	1	Nut	
34	271675M1	1	Clevis Pin	
35	3044950M91	1	Lever	
36	353919X1	1	Nut Unf	
37	353540X1	2	Screw Unf	
38	3044956M91	1	Bearer	
39	353919X1	1	Nut Unf	
40	3052849M1	1	Toggle	
41		1	Hydr Hose	(3) Not serviced, order 3371689M91
42	831497M1	1	O Ring	(3)
43	360059X1	1	Tie	
44	356446X1	1	Plug	
45	353516X1	1	Screw Unf	
46	831497M1	1	O Ring	(3)

4

BLOC CYLINDRES
 ZYLINDERBLOCK
 BLOCCO CILINDRI
 BLOQUE DE CILINDROS
 CYLINDER BLOCK

00501018

1 0050 038



1-0050-038

CYLINDER BLOCK

Item	Part Number	Qty	Description	Comments
1	63614	1	Cylinder Block	Repairs and replaces 63067
2	0650618	6	Plug	(1)
3	31358393	6	Liner	(1) (A)
3	31358394	6	Liner	(B)
4	32417133	1	Plug	
5	32417134	1	Plug	
6	0650618	14	Plug	
7	0650710	4	Plug	(1)
8	0650618	1	Plug	
9	0650563	1	Plug	
10	0650618	1	Plug	(1)
11			Not Used	
12	0650664	1	Plug	(1)
13	0746211	10	Bolt	
14	0920003	10	Washer	
15	32455119	2	Dowel	
16	0746424	6	Bolt	
17	33115129	6	Washer	
18	0746253	3	Screw	
19	0920053	3	Washer	
20	0920003	3	Washer	
21	36125305	1	Cover	
22	37147644	1	Plate	
23	37813113	1	Plug	
24	0350009	2	Dowel	
25	2172530	2	Capscrew	
26	33112111	2	Washer	
27	37513851	1	Housing	
28	2418F475	1	Seal	Repairs and replaces 2415391
29	36817157	1	Joint	
30	32161114	2	Plug	
31	0826214	4	Stud	
32	0920053	4	Washer	
33	0576002	4	Nut	
34	0920521	2	Washer	
35	2176369	2	Screw	
36	32418121	5	Plug	Repairs and replaces 32417155
37	2431131	2	Plug	
38	0650586	1	Plug	
39	32813108	1	Cover	
40			Not Used	
41	0650586	1	Plug	
42	33435133	1	Tube	
43	32417143	1	Plug	
44	32811408	4	Joint	
45	36277831	2	Bridge Piece	
46	0920521	2	Washer	
47	2176369	2	Screw	
48	32166329	14	Bolt	(1)
49	33121421	14	Washer	
50	33142111	14	Thimble	(1)
51	0826201	2	Stud	
52	0920053	2	Washer	
53	0576002	2	Nut	
54	32417127	2	Plug	
55	32417115	1	Plug	
56	0650566	2	Plug	
57	32417115	2	Plug	
58	32168231	4	Plug	
59	2411157	4	Washer	
60			Not Used	
61			Not Used	
62			Not Used	
63	0650593	1	Plug	
64	32161317	1	Plug	
65	2411156	1	Washer	

(A)
PRESS FIT

MASSEY FERGUSON

MF 560/565 COMBINES - 1637089

1637089

CYLINDER BLOCK

4

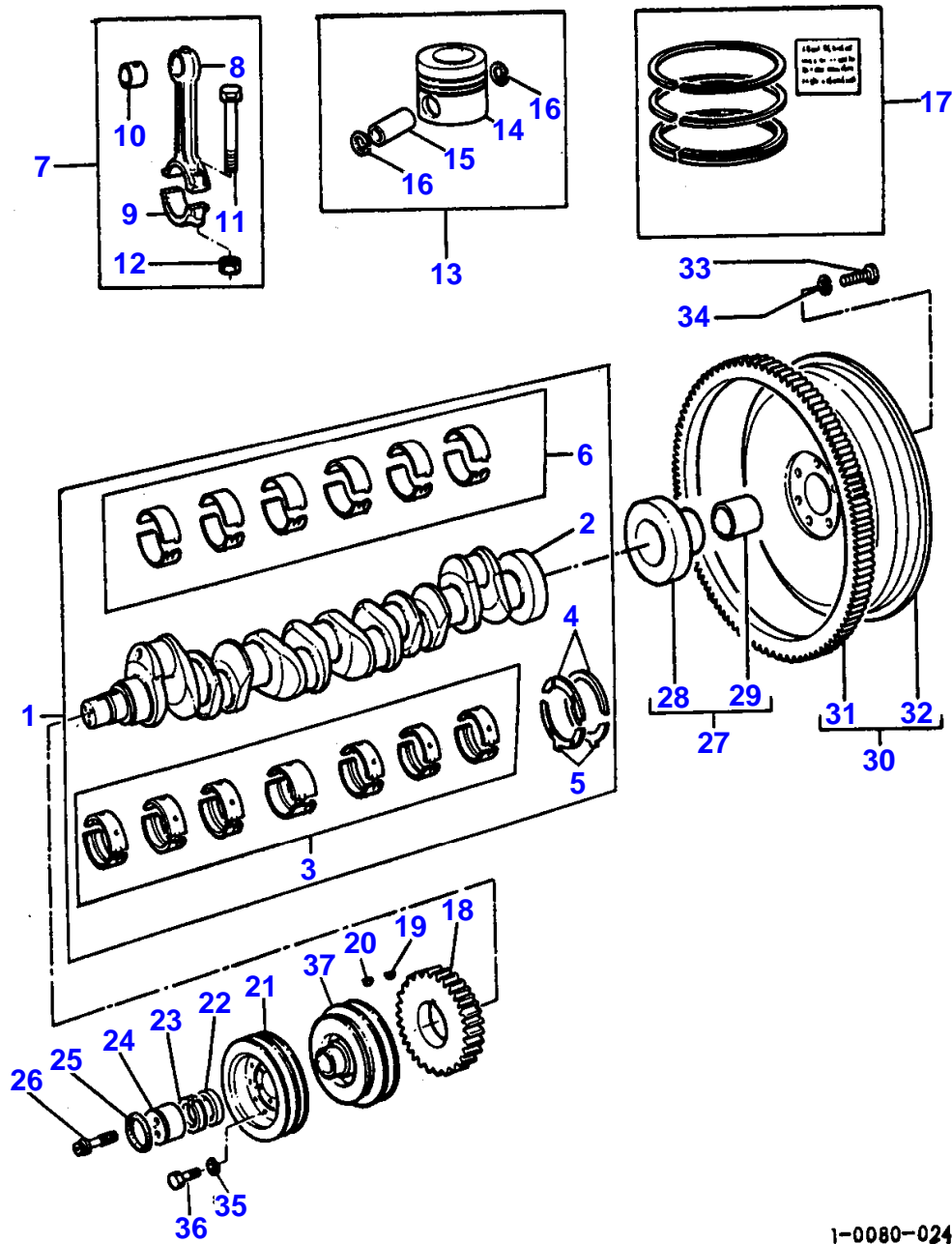
Item	Part Number	Qty	Description	Comments
------	-------------	-----	-------------	----------

(B)
SLIP FIT

8
 VILEBREQUIN
 KURBELWELLE
 ALBERO A MANOVELLA
 CIGUENAL
 CRANKSHAFT

00801012

1 0080 024



1-0080-024

CRANKSHAFT

Item	Part Number	Qty	Description	Comments
1	68077	1	Kit, Crankshaft	
2		1	Crankshaft	(1) Not serviced, order REF NO 1
3	68079	1	Kit, Bearing	(1) (C)
3	68079A	X	Kit, Bearing	(C) Thickness -0,25MM
3	68079B	X	Kit, Bearing	(C) Thickness -0,50MM
3	68079C	X	Kit, Bearing	(C) Thickness -0,75MM
4	31137311	2	Washer	(1)
	31137312	X	Thrust Washer	Thickness +0,17MM
5	31137321	2	Washer	(1)
	31137322	X	Thrust Washer	Thickness +0,17MM
6	89064	1	Kit, Bearing	(1) (C)
6	89064A	X	Kit, Bearing	(C) Thickness 0,25MM
6	89064B	X	Kit, Bearing	(C) Thickness 0,50 MM
6	89064C	X	Kit, Bearing	Thickness 0,75 MM
7	41152923	6	Conrod	Repairs and replaces 63408
8		1	Piston Rod	(7) Not serviced, order REF NO 7
9		1	Cap	(7) Not serviced, order REF NO 7
10	31134131	1	Bush	(7)
11	32762116	2	Bolt	(7)
12	33221328	2	Nut	(7) Repairs and replaces 33221321
13	68390	6	Piston	(A)
	68391	6	Piston	(B)
	68802	6	Kit, Piston	(A)
	68803	6	Kit, Piston	(B)
14		1	Piston	(13) Not serviced, order REF NO 13
15		1	Piston Pin	(13) Not serviced, order REF NO 13
16	2721A029	2	Circlip	(13)
17	41158005	6	Kit, Piston Ring	Repairs and replaces 68498 68238
18	31171211	1	Gear,Crankshaft	
19	0500012	1	Woodruff Key	
20	0500005	1	Woodruff Key	
21	31153161	1	Pulley,Crank	
22	33125412	1	Spacer	
23	2417711	1	Element	
24	32418313	1	Thrust Plate	
25	2415638	1	O Ring	
26	32186133	3	Screw	
27	41425216	1	Adaptor	
28		1	Adaptor	(27) Not serviced, order 41425216
29	2513246	1	Bush	(27)
30	41117088	1	Flywheel	
31	0410264	1	Gear,Starterring	(30)
32		1	Flywheel	(30) Not serviced, order 41117088
33	0746853	6	Bolt	
34	33117121	6	Washer	
35	0920053	9	Washer	
36	0096235	9	Bolt	
37	2635674	1	Pulley,Crank	From Serial or Engine Number
	2635679	1	Pulley,Crank	Up to Serial or Engine Number

(A)
UNTOPPED

(B)
PRE-TOPPED

CRANKSHAFT

Item	Part Number	Qty	Description	Comments
				(C) PRE-FINISHED

Buy Now



Our support email:

ebooklibonline@outlook.com