

Page Title	Page Number
ENGINE AND ACCESSORIES	2
ENGINE ACCESSORIES	4
FAN	6
CYLINDER BLOCK	8
CRANKSHAFT	10
CYLINDER HEAD	12
ROCKER ARM	14
CYLINDER HEAD COVER	16
AIR INDUCTION AND EXHAUST SYSTEM	18
TIMING GEAR	20
LUBRICATING OIL SYSTEM	22
BALANCER UNIT	24
LUBRICATING OIL FILTER - TUBE	26
LUBRICATING OIL FILTER	28
WATER PUMP	30
FUEL OIL LIFT PUMP	32
FUEL FILTERS AND PIPES	34
FUEL FILTER	36
FUEL INJECTION EQUIPMENT	38
JOINTS AND GASKETS	40
BATTERY	42
BATTERY - 4 WHEEL DRIVE	44
ALTERNATOR-MOTOROLA	46
ALTERNATOR-LUCAS	48
STARTER-PARIS RHONE	50
STARTER-LUCAS	52
FUEL TANK AND ATTACHMENTS	54
AIR FILTER - EQUIPMENT	58
AIR FILTER	60
MUFFLER VERTICAL	62
COOLING SYSTEM	64
THROTTLE CONTROLS - HAND	66
THROTTLE CONTROLS - FOOT	68
THROTTLE CONTROLS - PULL STOP	70
ENGINE ACCESSORIES	72
SINGLE CLUTCH	74
PEDAL AND LINKAGE-SINGLE CLUTCH	76
12 SPEED TRANSMISSION-SHIFT CONTROL - SYNCHRO- ZF	78
12 SPEED TRANSMISSION-FORK AND GEAR SHIFTRAIL - SYNCHRO- ZF	80
12 SPEED TRANSMISSION-HOUSING - SYNCHRO- ZF	82
12 SPEED TRANSMISSION-INPUTSHAFT - SYNCHRO- ZF	84
12 SPEED TRANSMISSION-COUNTERSHAFT - SYNCHRO- ZF	86
12 SPEED TRANSMISSION-MAIN SHAFT - SYNCHRO- ZF	88
MULTIPOWER TRANSMISSION-CONTROL - LEVER	90
MULTIPOWER TRANSMISSION-CONTROL	92
TRANSMISSION-SHIFT CONTROL - SYNCHRO- ZF	94
MULTIPOWER CONSTANTMESH TRANSMISSION-FORK AND GEAR SHIFTRAIL - SYNCHRO- ZF	96
MULTIPOWER CONSTANTMESH TRANSMISSION-HOUSING - SYNCHRO- ZF	98
MULTIPOWER CONSTANTMESH TRANSMISSION-INPUTSHAFT - SYNCHRO- ZF	100
MULTIPOWER TRANSMISSION-COUNTERSHAFT - SYNCHRO- ZF	102
MULTIPOWER CONSTANTMESH TRANSMISSION-MAIN SHAFT - SYNCHRO- ZF	104
SYNCHRO - ZF MULTIPower TRANSMISSION	106

## TABLE OF CONTENT

00

EPICYCLIC UNIT-HEAVY DUTY	108
PTO-DRIVE MECHANISM-TWO SPEED	110
IPTO-CLUTCH AND VALVES	112
IPTO-PIPES AND COVER - WITH IPTO	114
PTO-CONTROL	118
REAR AXLE-SPACER - 2 WHEEL DRIVE	120
REAR AXLE CENTRE HOUSING	122
REAR AXLE-DIFFERENTIAL	124
REAR AXLE-DIFFERENTIAL LOCK MECHANISM	126
REAR AXLE-HOUSING	128
DISC BRAKES	130
HYDRAULIC BRAKE CONTROL-PEDAL	132
HYDRAULIC BRAKE CONTROL-PIPING - EARLY MODELS	134
HYDRAULIC BRAKE CONTROL-PIPING	136
MAIN CYLINDER BRAKE	138
BRAKE CYLINDER	140
HANDBRAKE - RIGHT SIDE	142
HANDBRAKE - RIGHT SIDE	144
HANDBRAKE-LINKAGE - RIGHT SIDE	146
REAR WHEELS	148
REAR WHEELS	150
REAR WHEELS - 12X38	152
POWER ASSISTED VARIABLE TRACK WHEEL	154
POWER ASSISTED VARIABLE TRACK WHEEL - ITALY-AAA-14X34	156
FRONT WHEELS-2 WHEEL DRIVE	158
FRONT WHEELS-2 WHEEL DRIVE	160
FRONT WHEELS-4 WHEEL DRIVE	162
FRONT WHEELS-4 WHEEL DRIVE	164
FRONT WHEELS-4 WHEEL DRIVE	166
FRONT AXLE - WHEEL HUB	168
FRONT AXLE-2 WHEEL DRIVE	170
AXLE SUPPORT	172
HYDROSTATIC- STEERING - STEERING WHEEL	174
STEERING UNIT-ORBITROL DANFOSS	176
HYDROSTATIC- STEERING - SAFETY VALVE	178
STEERING HYDRAULIC LINES - HYDR HOSE-ORBITROL	180
HYDROSTATIC STEERING-2 WHEEL DRIVE	182
HYDROSTATIC- STEERING-4 WHEEL DRIVE	184
HYDROSTATIC- STEERING-4 WHEEL DRIVE - WITH TANK	186
HYDROSTATIC- STEERING-4 WHEEL DRIVE - OIL COOLER	188
HYDROSTATIC- STEERING-4 WHEEL DRIVE - TUBE FRONT- UP TO SERIAL 31-01-82	190
HYDROSTATIC- STEERING-4 WHEEL DRIVE - TUBE FRONT- FROM SERIAL S 225018	192
STEERING PUMP-AIR EQUIPEMENT	194
STEERING CYLINDER-2 WHEEL DRIVE	196
STEERING CYLINDER-4 WHEEL DRIVE - HYDROSTATIC STEERING	198
STEERING LINKAGE-2 WHEEL DRIVE	200
HYDRAULIC PUMP DRIVE	202
HYDRAULIC PUMP-DUAL-AIR EQUIPMENT - UP TO SERIAL NO- K208016	204
INTERNAL LINES - WITH AUXILIARY PUMP	206
HYDRAULIC LINE	208
INTERNAL LINES - 8 SPEED- 12 SPEED- 2 WHEEL DRIVE	210
INTERNAL LINES - 12 SPEED 4 WHEEL DRIVE	212
INTERNAL LINES - MULTI POWER	214

## TABLE OF CONTENT

00

HYDRAULIC VALVE - 8 SPEED - 12 SPEED- 4 WHEEL DRIVE	216
HYDRAULIC VALVE - MULTI-POWER	218
OIL COOLER - HYDRAULIC LINES-2 WHEEL DRIVE-12 SPEED TRANSMISS	220
OIL COOLER - HYDRAULIC LINES-2 WHEEL DRIVE-MULTIPOWER TRANSMIS.	222
OIL COOLER - HYDRAULIC LINES-4 WHEEL DRIVE- 12 SPEED AND MULTIP OWER TRANSMISSION	224
OIL COOLER	226
TRAILOR BRAKE LINES	228
TRAILER BRAKE VALVE - FROM 09/1980	230
DISTRIBUTOR - KONTAK	232
DISTRIBUTOR - KONTAK-DISTRIBUTOR CONTROL	234
DISTRIBUTOR - KONTAK-REAR HYDRAULIC LINES	236
DISTRIBUTOR - KONTAK-REAR SUPPORT- CAP-TRANSFER	238
DISTRIBUTOR - KONTAK-DELIVERY COMBINED	240
DISTRIBUTOR - KONTAK-DELIVERY SINGLE	242
DISTRIBUTOR - KONTAK-TRAILOR BRAKE DELIVERY	244
DISTRIBUTOR - KONTAK-HOSE FOR TILTING TRAILER- WITHOUT HYDRAULIC MK 3	246
BREATHING FILTER	248
HYDRAULIC PUMP-BODY SHAFT PISTON - HIGH FLOW-IPTO	250
HYDRAULIC PUMP-OSCILLATOR VALVE	252
HYDRAULIC PUMP-STRAINER UNIT	254
HYDRAULIC PUMP-PRESSURE CONTROL VALVE	256
HYDRAULIC LIFT COVER	258
LIFT ARMS - RAM	260
LIFT ARMS	262
LIFT ARMS - DRAFT AND POSITION CONTROLS	264
QUADRANT SUPPORT - DRIVE SHAFT	266
QUADRANT SUPPORT	268
DRAFT AND POSITION CONTROLS	270
DRAFT AND POSITION CONTROLS - EXTERIOR	272
RESPONSE CONTROLS	274
RESPONSE CONTROLS - CONTROL	276
RESPONSE CONTROLS - HYDRAULIC MKIIIA- EXCEPT FRENCH	278
RESPONSE CONTROLS - SELECTION VALVE- EXCEPT FRENCH	280
RESPONSE CONTROLS - CABLE CONTROL- EXCEPT FRENCH	282
TOP LINKS - UPPER LINK-SCALE	284
LOWER LINKS - LEVELLING BOX	286
LOWER LINKS - LEVELLING BOX DRIVE	288
LOWER LINKS - BOTTOM BAR	290
LOWER LINKS - BOTTOM BAR-WITH AUTOMATIC HOOK	292
LOWER LINKS - CHAIN	294
LOWER LINKS - ADJUSTABLE COUPLING	296
STABILIZERS - WITH 1 CYLINDER	298
HYDRAULIC LIFT CYLINDER - WITH 1 CYLINDER	300
HYDRAULIC LIFT CYLINDER - WITH 2 CYLINDER	302
HYDRAULIC LIFT CYLINDER - O 25 MM	304
BACK BONE CYLINDER - DIAMETER 25 MM	306
SWINGING DRAWBAR - 2 WHEEL DRIVE	308
SWINGING DRAWBAR - 4 WHEEL DRIVE	310
SWINGING DRAWBAR	312
HITCH - TELESCOPIC HOOK	314
HITCH - AUTOMATIC HOOK	316
HITCH-LEMOINE	318
FRONT HITCH - 2 WHFFLS DRIVE	320

TABLE OF CONTENT

FRONT HITCH - #C-#2	322
SHEET METAL-GRILLE - 2 WHEEL DRIVE	324
SHEET METAL-GRILLE - 4 WHEEL DRIVE	326
SHEET METAL-HOOD	328
TRACTOR CAB-CAB MOUNTINGS AND STEP / STAIRS	332
TRACTOR CAB-REAR PANELS CAB	334
TRANSFERS - 2 WHEEL DRIVE	336
TRANSFERS - 4 WHEEL DRIVE	340
SPEED CHARTS	344
SEAT-GRAMMER - PLATFORM	346
TRACTOR CAB - HOOD BRACKET AND INSTRUMENT PANEL	350
SHEET METAL-INSTRUMENT PANEL	352
TRACTOR CAB - FENDERS-HANDBRAKE RIGHT SIDE	354
TRACTOR CAB - FRAME	356
TRACTOR CAB - ROOF	358
TRACTOR CAB-VENTILATION	360
TRACTOR CAB - BEARER-FAN-HEATER	362
TRACTOR CAB-CAB HEATER	364
TRACTOR CAB - FAN-HEATER- 3302782M91	366
TRACTOR CAB - FAN-HEATER- 3302782M92	370
TRACTOR CAB - FAN-HEATER	372
TRACTOR CAB-WINDOWS	374
TRACTOR CAB-WINDOWS - REAR	376
TRACTOR CAB-CAB DOOR - WINDOW	378
TRACTOR CAB-CAB DOOR	380
TRACTOR CAB-CAB INSULATION - ROOF	382
TRACTOR CAB-CAB INSULATION - WITH HANDBRAKE RIGHT SIDE	384
TRACTOR CAB-CAB MISCELLANEOUS	386
SEAT-GRAMMER - UP TO SERIAL NUMBER	388
SEAT-GRAMMER - FROM SERIAL NUMBER	392
TOOL BOX	396
SHEET METAL-INSTRUMENT PANEL - PLATFORM	398
SHEET METAL-FLAT TOP FENDERS - FENDERS ET PLAFORM-HANDBRAKE RIGHT SIDE	400
SAFETY FRAME - WITH PLATFORM	402
FENDER EXTENSION	404
FRONT LIGHTING EQUIPMENT	406
WIRING	410
WIRING - ENGINE- TRACTOR WITH PLATFORM	412
WIRING - PANEL WIRING	414
WIRING - REAR- CAB	416
WIRING - REAR- PLATFORM	418
WIRING - ROOF	420
REAR LIGHTING EQUIPMENT - REAR LIGHT	422
REAR LIGHTING EQUIPMENT - WORKING LIGHT- PLATFORM	424
REAR LIGHTING EQUIPMENT - WORKING LIGHT- CAB	426
REAR LIGHTING EQUIPMENT	428
REAR LIGHTING EQUIPMENT - WITH FENDER EXTENSION	430
FRONT AXLE HYDRAULIC CONTROL	432
FRONT AXLE CONTROL VALVE	434
TRANSFER GEAR BOX-GEARS	436
TRANSFER GEAR BOX - ASSEMBLING PARTS	440
GUARD AND TRANSMISSION SHAFT - 4 WHEEL DRIVE	442
FRONT AXLE HOUSING-4 WHEEL DRIVE - CAT III	444

MASSEY FERGUSON

MF 698 TRACTOR, ->| 1984 (FR) - 1637091

1637091

TABLE OF CONTENT

00

FRONT AXLE-DIFFERENTIAL-4 WHEEL DRIVE - CAT III

446

FRONT AXLE FINAL DRIVE-4 WHEEL DRIVE - CAT III

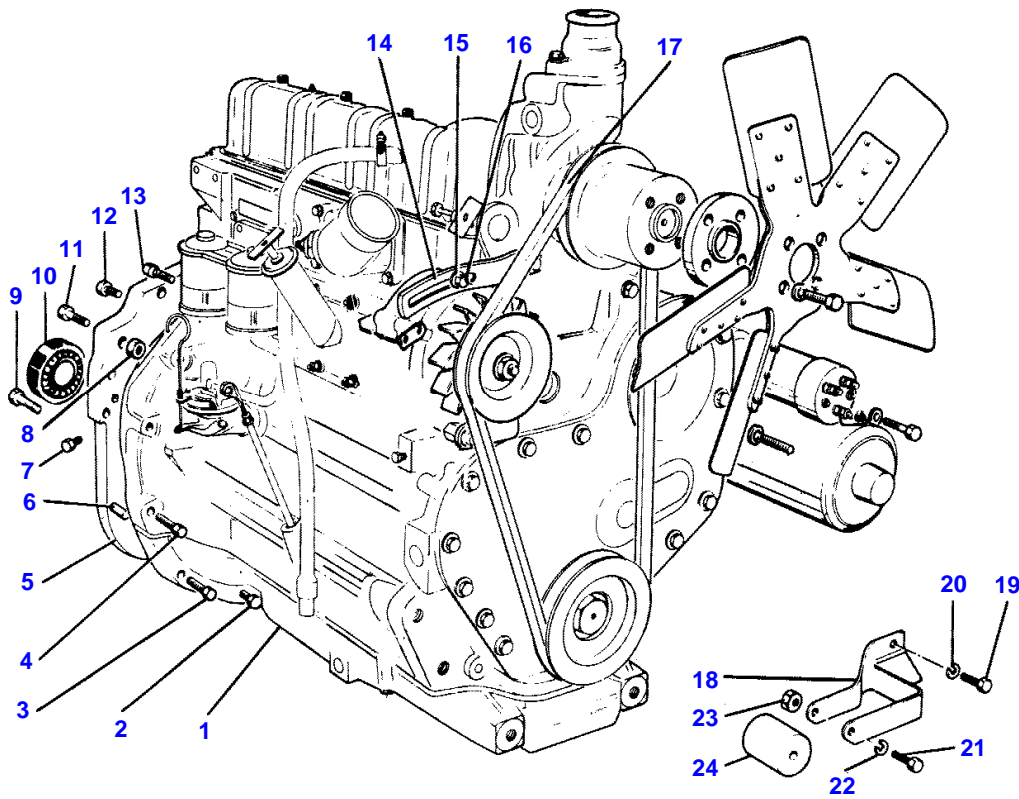
450

2

MOTEUR ET ACCESSOIRES  
MOTOR UND ZUBEHOER  
MOTORE ED ACCESSORI  
MOTOR Y ACCESORIOS  
ENGINE AND ACCESSORIES

00101039

1 0010 055



1-0010-055

**MASSEY FERGUSON****MF 698 TRACTOR, ->| 1984 (FR) - 1637091****1637091****ENGINE AND ACCESSORIES****2**

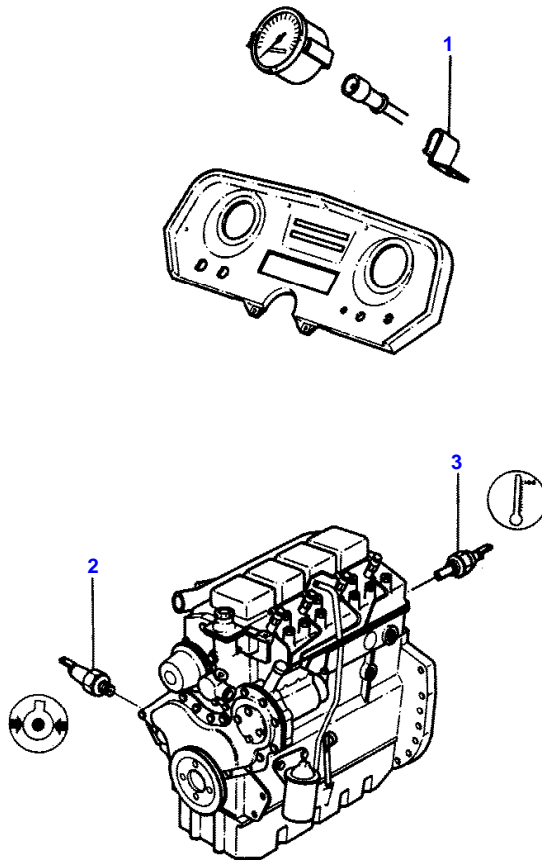
<b>Item</b>	<b>Part Number</b>	<b>Qty</b>	<b>Description</b>	<b>Comments</b>
1	1669671M91	1	Engine	A4.318-2
2	353726X1	2	Screw Unc	
3	353702X1	2	Bolt Unc	
4	353714X1	5	Bolt Unc	
5	1612644M2	1	Plate	
6	191314M1	4	Centraliser	
7	32114108	1	Plug	
8	355645X1	1	Nut Unc	
9	353702X1	1	Bolt Unc	
10	828123M1	1	Bearing Assy	
11	362491X1	1	Screw	
12	365873X1	13	Screw	
13	362485X1	3	Screw	
14	1670173M1	1	Tensioner	
15	353770X1	1	Washer	
16	353678X1	1	Screw Unc	
17	1809095M2	1	Belt	
18	1614871M91	1	Bracket	
19	353538X1	2	Screw Unf	
20	353434X1	2	Lock Washer	
21	353898X1	1	Screw	
22	353434X1	1	Lock Washer	
23	355566X1	1	Nut Unc	
24	1618008M1	1	Spacer	

4

ACCESSOIRES MOTEUR  
MOTOR ZUBEHOER  
MOTORE ACCESSORI  
MOTOR ACCESSORIS  
ENGINE ACCESSORIES

00201002

1 0020 002



1-0020-002



MASSEY FERGUSON

MF 698 TRACTOR, ->| 1984 (FR) - 1637091

1637091

ENGINE ACCESSORIES

4

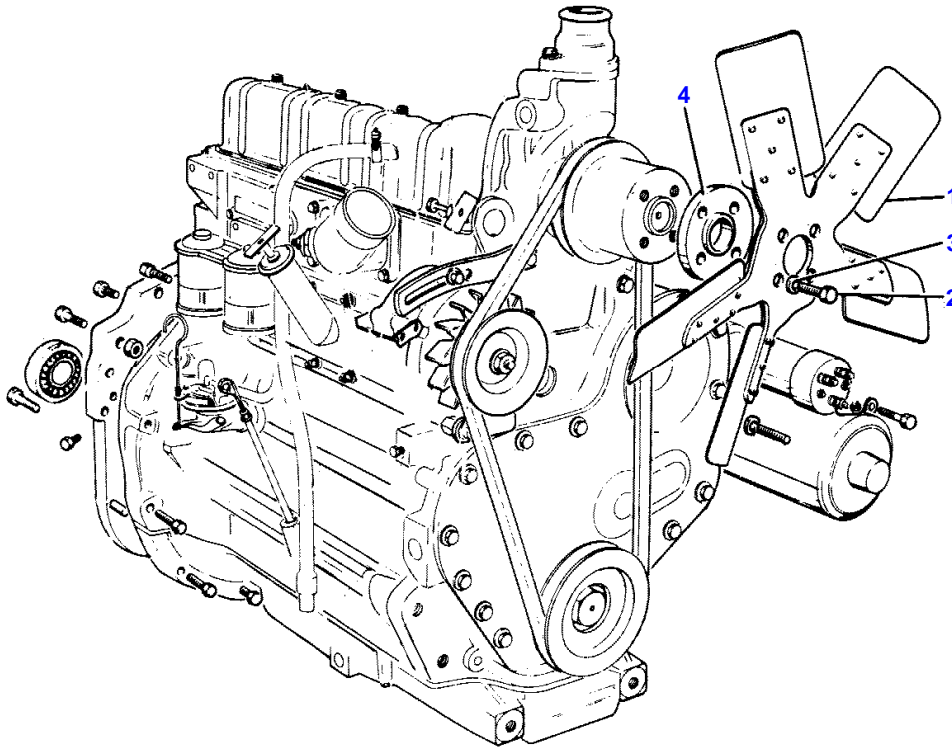
Item	Part Number	Qty	Description
1	1875887M1	1	Clip
2	1877721M92	1	Pressure Switch
3	1877731M92	1	Sender

6

VENTILATEUR  
LUEFTER  
VENTOLA  
VENTILADOR  
FAN

02701004

1 0270 005



1-0270-005

MASSEY FERGUSON

MF 698 TRACTOR, ->| 1984 (FR) - 1637091

1637091

FAN

6

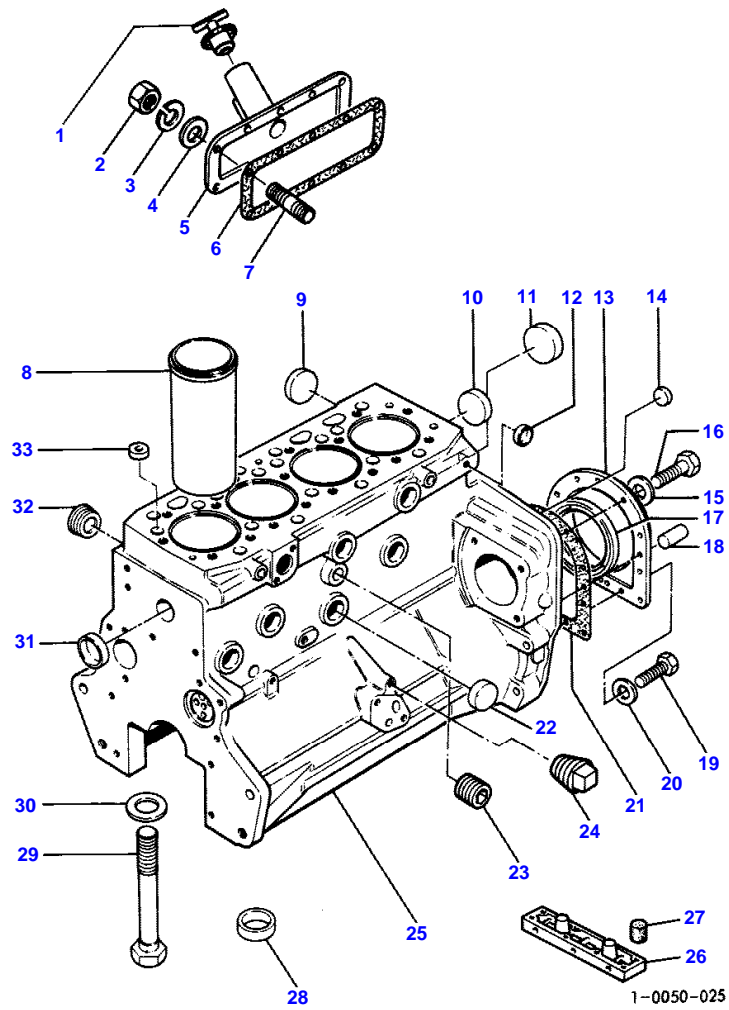
Item	Part Number	Qty	Description
1	522899M91	1	Fan
2	353525X1	4	Bolt Unf
3	0920053	4	Washer
4	506321M2	1	Spacer

8

**BLOC CYLINDRES**  
**ZYLINDERBLOCK**  
**BLOCCO CILINDRI**  
**BLOQUE DE CILINDROS**  
**CYLINDER BLOCK**

00501024

1 0050 025



CYLINDER BLOCK

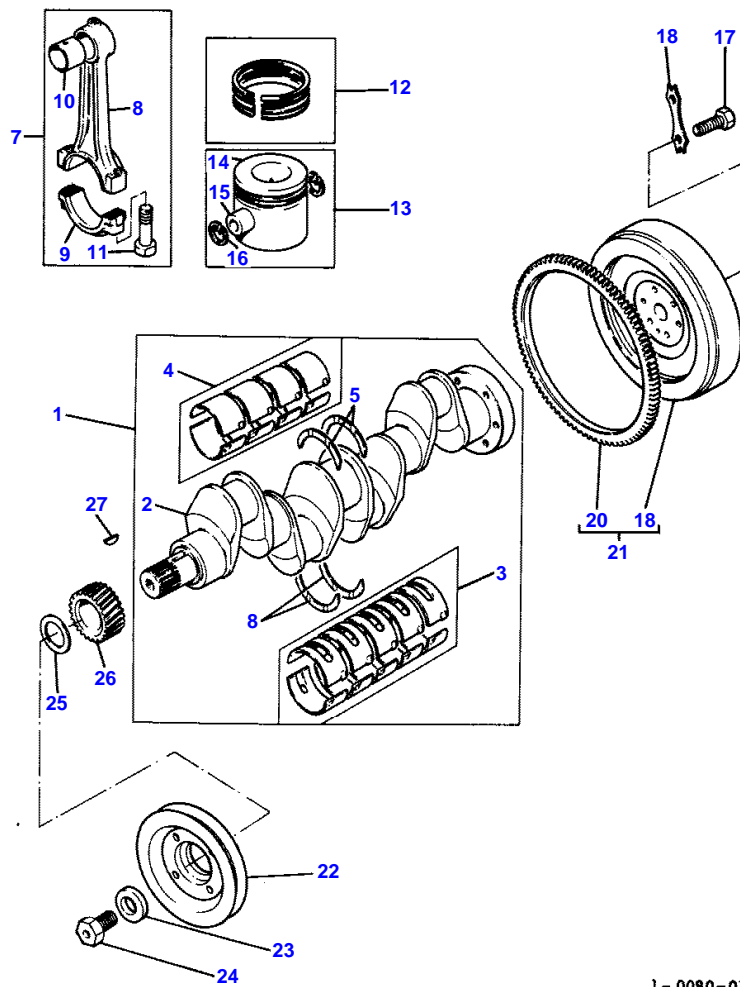
Item	Part Number	Qty	Description	Comments
1	2487863	1	Cap	
2	0576002	10	Nut	
3	0920053	10	Washer	
4	36151505	10	Washer	
5	37554575	1	Inspection Cover	
6	36846411	1	Gasket	
7	0826203	10	Stud	
8	31358533	4	Liner	(A) 25
8	31358534	4	Liner	(B) 25
9	0650577	2	Plug	
10	0650577	1	Plug	
11	32416106	1	Plug	
12	0650507	2	Plug	
13	37513832	1	Housing	
14	0650566	1	Plug	
15	0920003	9	Washer	
16	0746211	9	Bolt	
17	2415391	1	Seal	
18	0350016	2	Dowel	
19	0748354	4	Screw	
20	0920002	4	Washer	
21	36817417	1	Joint	
22	0650563	5	Plug	
23	0650588	1	Plug	
24	0650594	1	Plug	
25	64645	1	Cylinder Block	
26	41474019	1	Bridge Piece	
27	36843144	1	Seal	
28	33142111	10	Thimble	25
29	32166329	10	Bolt	25
30	0760001	10	Shim	
31	0650577	1	Plug	
32	0650588	2	Plug	25
33	33141131	1	Plug	25
				(A)
				PRESS FIT
				(B)
				SLIP FIT

10

VILEBREQUIN  
KURBELWELLE  
ALBERO A MANOVELLA  
CIGUENAL  
CRANKSHAFT

00801018

1 0080 016



1 - 0080-016

CRANKSHAFT

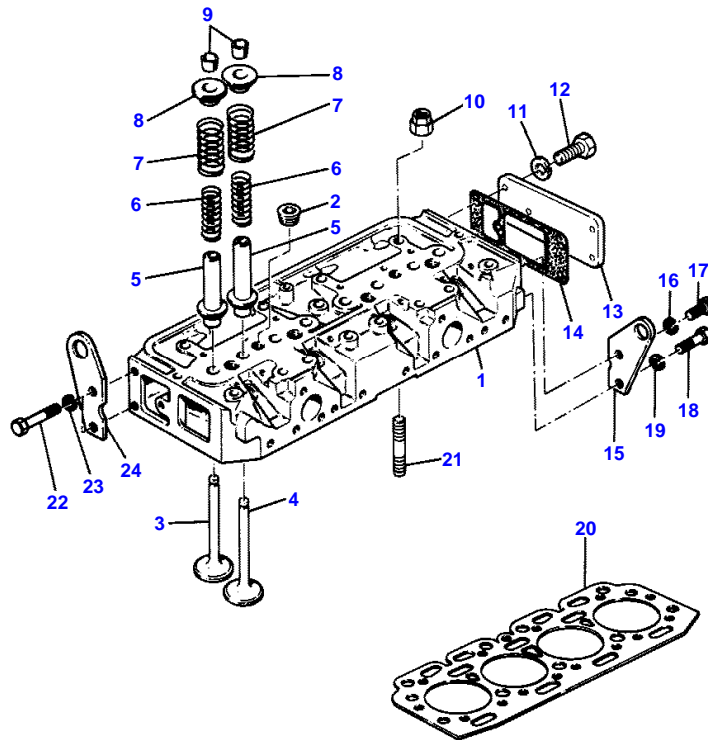
Item	Part Number	Qty	Description	Comments
1	68607	1	Kit, Crankshaft	
2		1	Crankshaft	Not serviced, order 1 1
3	68085	1	Kit, Bearing	(A) 1
3	68085A	X	Kit, Bearing	Thickness (-)0.010" (A)
3	68085B	X	Kit, Bearing	Thickness (-)0.020" (A)
3	68085C	X	Kit, Bearing	Thickness (-)0.030" (A)
4	85041	1	Kit, Bearing	(A) 1
4	85041A	X	Kit, Bearing	Thickness (-)0.010" (A)
4	85041B	X	Kit, Bearing	Thickness (-)0.020" (A)
4	85041C	X	Kit, Bearing	Thickness (-)0.030" (A)
5	31137311	2	Washer	1
	31137312	X	Thrust Washer	Thickness (+)0.007"
6	31137321	2	Washer	1
	31137322	X	Thrust Washer	Thickness (+)0.007"
7	86812	4	Conrod	
8		1	Conrod	Not serviced, order 7 7
9		1	Cap	Not serviced, order 7 7
10	0050128	1	Bush	7
11	0745065	2	Screw	7
12	41158132	4	Kit, Piston Ring	
13	68810	4	Kit, Piston	
14		1	Piston	Not serviced, order 13 13
15		1	Piston Pin	Not serviced, order 13 13
16	0170037	2	Circlip	13
17	32162203	6	Screw	
18	0921062	3	Tab Washer	
19		1	Flywheel	Not serviced, order 21 21
20	0410264	1	Gear, Starterring	21
21	41117236	1	Flywheel	
22	31148924	1	Pulley, Crank	
23	33125124	1	Washer	
24	32162318	1	Screw	
25	33125424	1	Washer	
26	31165392	1	Gear, Crankshaft	
27	0500012	1	Woodruff Key	(A) PRE-FINISHED

12

CULASSE  
ZYLINDERKOPF  
TESTATA  
CULATA  
CYLINDER HEAD

0075 1018

1 0075 019



1-0075-019



CYLINDER HEAD

Item	Part Number	Qty	Description	Comments
1	68186	1	Cylinder Head	
2	2431154	6	Plug	1
3	31431154	4	Valve Inlet	1
4	31431671	4	Valve Exhaust	1
5	33432532	8	Guide	1
6	31744131	8	Spring	1
7	31745121	8	Spring	1
8	33423122	8	Cap	1
9	33173108	8	Cotter	1
				(A)
10	33531128	17	Nut	
11	0920054	6	Washer	1
12	0746454	6	Setscrew	1
13	0240223	1	Plate	1
14	0490253	1	Joint	1
15	36243532	1	Plate	
16	0920054	1	Washer	
17	0096431	1	Bolt	
18	0096432	1	Screw	
19	0920054	1	Washer	
20	36812348	1	Gasket	
21	32526326	17	Stud	
22	0096442	1	Bolt	
23	0920054	1	Washer	
24	36243532	1	Plate	

(A)  
SERVICED IN PAIRS

**Buy Now**



Our support email:

[ebooklibonline@outlook.com](mailto:ebooklibonline@outlook.com)