

Page Title	Page Number
ENGINE AND ACCESSORIES	2
CYLINDER BLOCK	4
CRANKSHAFT	8
CYLINDER HEAD	12
CYLINDER HEAD COVER	16
ROCKER ARM	18
AIR INDUCTION	20
TIMING GEAR	22
LUBRICATING OIL SYSTEM	24
LUBRICATING OIL FILTER	26
WATER PUMP	28
FUEL PIPINGS	30
FUEL OIL LIFT PUMP	32
FUEL FILTER	34
FUEL INJECTION EQUIPMENT	36
AUXILIARY DRIVE	38
JOINTS AND GASKETS	40
ALTERNATOR POSITIONER	42
ALTERNATOR-LUCAS	44
STARTER-LUCAS	46
ELECTRICAL EQUIPMENT	48
RADIATOR	50
RADIATOR - TUBE	52
ROTATING AIR INTAKE	54
ROTATING AIR INTAKE - LOWER HOUSING	56
ROTATING AIR INTAKE - DRIVING	58
FUEL TANK AND ATTACHMENTS	60
FUEL TANK AND ATTACHMENTS - TUBE	62
FUEL TANK AND ATTACHMENTS - COWL	64
AIR FILTER-DRY - DUAL ELEMENT	66
AIR FILTER-DRY - DUAL ELEMENT - DETAIL	68
AIR PRE FILTER	70
EXHAUST SYSTEM	72
ENGINE FRAME	74
MOTOR COVER	76
KNIFE	80
WOBBLE DRIVE	84
TABLE DRIVE	86
REEL	90
REEL - DRIVING SHAFTS	92
REEL CARRIER	94
AUGER	96
TABLE - 10'	100
TABLE - 12'-14'	104
DIVIDER - SLOPING	108
DIVIDER - TALL CROP	110
DIVIDER - HARPOON	112
ATHC - MECHANICAL	116
ATHC	118
SENSING FINGERS	120
CLUTCH - TABLE	124
ELEVATOR	126
ELEVATOR - UPPER SHAFT	130
ELEVATOR - DRUM	132
ELEVATOR - CHAIN	134
CYLINDER HOUSING - LEFT SIDE	136
CYLINDER HOUSING - RIGHT SIDE	138
CYLINDER HOUSING - INTERNAL COMPONENTS	140
CYLINDER HOUSING - DOOR-COVER	142
SEPARATOR CLUTCH - CONTROLS	144
SEPARATOR CLUTCH	148
REAR BEATER - DRIVING	150
REAR BEATER	152
CYLINDER	154
CYLINDER - DRIVE GEAR BOX	158
CYLINDER - DRIVE	162

TABLE OF CONTENT

CONCAVE	164
CONTROL LINKAGE	168
CONTROL LINKAGE - REAR	172
STONE STRAP	176
CASCADE SEPARATOR - HOOD	178
CASCADE SEPARATOR - BELT-SIGNAL	180
CASCADE SEPARATOR GRAIN ELEVATOR - UPPER COMPONENTS	184
CASCADE SEPARATOR GRAIN ELEVATOR - LOWER COMPONENT	188
CASCADE SEPARATOR - COWL	192
CASCADE SEPARATOR CYLINDER AND DRIVES	196
CASCADE SEPARATOR CYLINDER AND DRIVES - PULLEY	198
CASCADE SEPARATOR - GUARDS	200
SHAKER SHOE - DOUBLE SHOE	202
SHAKER SHOE - TRIPLE SHOE	206
PAN - DRIVE	210
PAN	214
SCREEN - DOUBLE SHOE	218
SCREEN - DRIVE	220
FANNING HILL	222
SHAKER SHOE DRIVE	226
FANNING HILL - GUARDS	228
STRAW WALKER - UPPER DRIVE	230
STRAW WALKER - LOWER DRIVE	232
STRAW WALKER	234
STRAW WALKER - DIVIDER	236
STRAW WALKER BODY - EXTERNAL COMPONENTS	238
STRAW WALKER BODY - INTERNAL COMPONENTS	242
GLEANINGS ELEVATOR - UPPER COMPONENTS	244
GLEANINGS ELEVATOR - LOWER COMPONENT	246
GLEANINGS ELEVATOR - SLINGER HOUSING	250
RETURN ELEVATOR ALARM ARRANGEMENT	254
ALARM	256
MAIN FRAME - REINFORCEMENT	258
MAIN FRAME - DOOR	262
HOOD	264
GRAIN TANK - LEFT COMPONENT	266
GRAIN TANK - RIGHT COMPONENT	270
GRAIN TANK - LOWER COMPONENT	274
GRAIN TANK - LOWER AUGER	276
AUGER AND PITMAN CRANK	278
GRAIN TANK - EXTENSION	280
GRAIN TANK - EXTENSION-ADJUSTMENT	284
GRAIN TANK - ALARM	286
GRAIN TANK - CHAINS	288
GRAIN ELEVATOR - UPPER COMPONENTS	290
GRAIN ELEVATOR - LOWER COMPONENT	296
GRAIN ELEVATOR - CHAINS	298
UNLOADER DRIVE AND CONTROLS	300
AUGER LOWER - UPPER COMPONENTS	304
AUGER LOWER - LOWER COMPONENT	308
AUGER LOWER - EXTENSION	310
TANK FILLING CONTROL	312
FLYWHEEL	314
TRANSMISSION - RIGHT	318
TRANSMISSION	324
COUNTER SHAFT AND CLUTCH	326
COUNTER SHAFT AND CLUTCH - LUBRICATION	330
SECONDARY COUNTERSHAFT	332
TRACTION DRIVE - VARIATOR	334
TRACTION CLUTCH	336
TRACTION CLUTCH - CONTROLS	338
FRONT AXLE FINAL DRIVE-4 WHEEL DRIVE - HIGH SPEED	340
TRANSMISSION GEAR BOX	344
TRANSMISSION GEAR BOX - DRIVE	350
FRONT AXLE	354
HAND BRAKE	356
GEARBOX PARKING BRAKE - DRIVE	358
BRAKES OPERATING - PARKING	360

TABLE OF CONTENT

HYDRAULIC BRAKE CONTROL - CYLINDER	362
BRAKES OPERATING	366
DRUM BRAKE	368
OPERATORS PLATFORM	370
OPERATORS PLATFORM - RAIL-LADDER	374
SEAT - SABLE	378
SPRING SUPPORT	382
CONTROL PANEL - HOUSING	386
CONTROL PANEL - GUARD LOWER	390
CONTROL PANEL - SOUND INSULATION	392
CONTROL PANEL - LEVER	394
CONTROL PANEL - LEVER-WITH AUTOMATIC TABLE HEIGT CONTROLS	400
CONTROL PANEL - CABLE	402
INSTRUMENTS - SUPPORT	404
INSTRUMENTS - INSTRUMENTS-SWITCH	406
INSTRUMENTS - JUNCTION	410
CAB - FRONT	412
CAB - REAR	416
CAB	418
CAB	420
CAB - LATCH LADDER	422
CAB - LATCH RAMP- GERMANY	424
CAB - MISCELLANEOUS	426
CAB - FLOOR	428
CAB - WIRING	430
AIR CONDITIONER - COMPRESSOR - KYSOR	432
AIR CONDITIONER - COMPRESSOR - BRACKET AND ASSEMBLING- KYSOR	434
AIR CONDITIONER - CONDENSOR	438
AIR CONDITIONER - CONDENSOR - BRACKET	442
AIR CONDITIONER - EVAPORATOR - KYSOR	444
AIR CONDITIONER - EVAPORATOR - KYSOR	446
STEERING COLUMN	448
STEERING COLUMN - HOUSING	450
STEERING COLUMN - ADJUSTING	452
STEERING PUMP-AIR EQUIPEMENT	454
SAFETY BLOCK	456
REAR AXLE	458
WHEELS	460
HYDRAULIC CIRCUIT	462
REEL HYDROSTATIC DRIVE - PULLEY	466
REEL HYDROSTATIC DRIVE - PINIONS	468
HYDRAULIC MOTOR	472
REEL - HYDRAULIC	474
REEL LIFT HYDRAULICS	476
REEL HYDRAULIC PUMP AND TANK	478
RAM FOR REEL LIFT	480
RAM FOR REEL LIFT - RIGHT	482
RAM FOR REEL FORE AND AFT ARRANGEMENT	484
RAM FOR REEL FORE AND AFT ARRANGEMENT	486
HYDRAULIC CIRCUIT - CONTAINER-PUMP-VALVE	488
HYDRAULIC CIRCUIT - REEL	490
HYDRAULIC CIRCUIT - TABLE LIFT	492
HYDRAULIC CIRCUIT - STEERING	496
HYDRAULIC CIRCUIT - TRACTION	500
HYDRAULIC CIRCUIT - REAR BEATER CLUTCH	502
HYDRAULIC UNLOADER ARRANGEMENT	504
UNLOADER SPOUT ARRANGEMENTS	508
HYDRAULIC PUMP	510
CONTROL VALVE - UPPER COMPONENTS	512
CONTROL VALVE - LOWER COMPONENT	514
RAM FOR TRACTION	516
RAM FOR STEERING	518
RAM FOR TABLE LIFT - RIGHT	520
RAM FOR TABLE LIFT - LEFT	522
CHAINS	524
BELT DETAILS	526
LIGHTING - FRONT	528
LIGHTING - REAR	532

## TABLE OF CONTENT

00

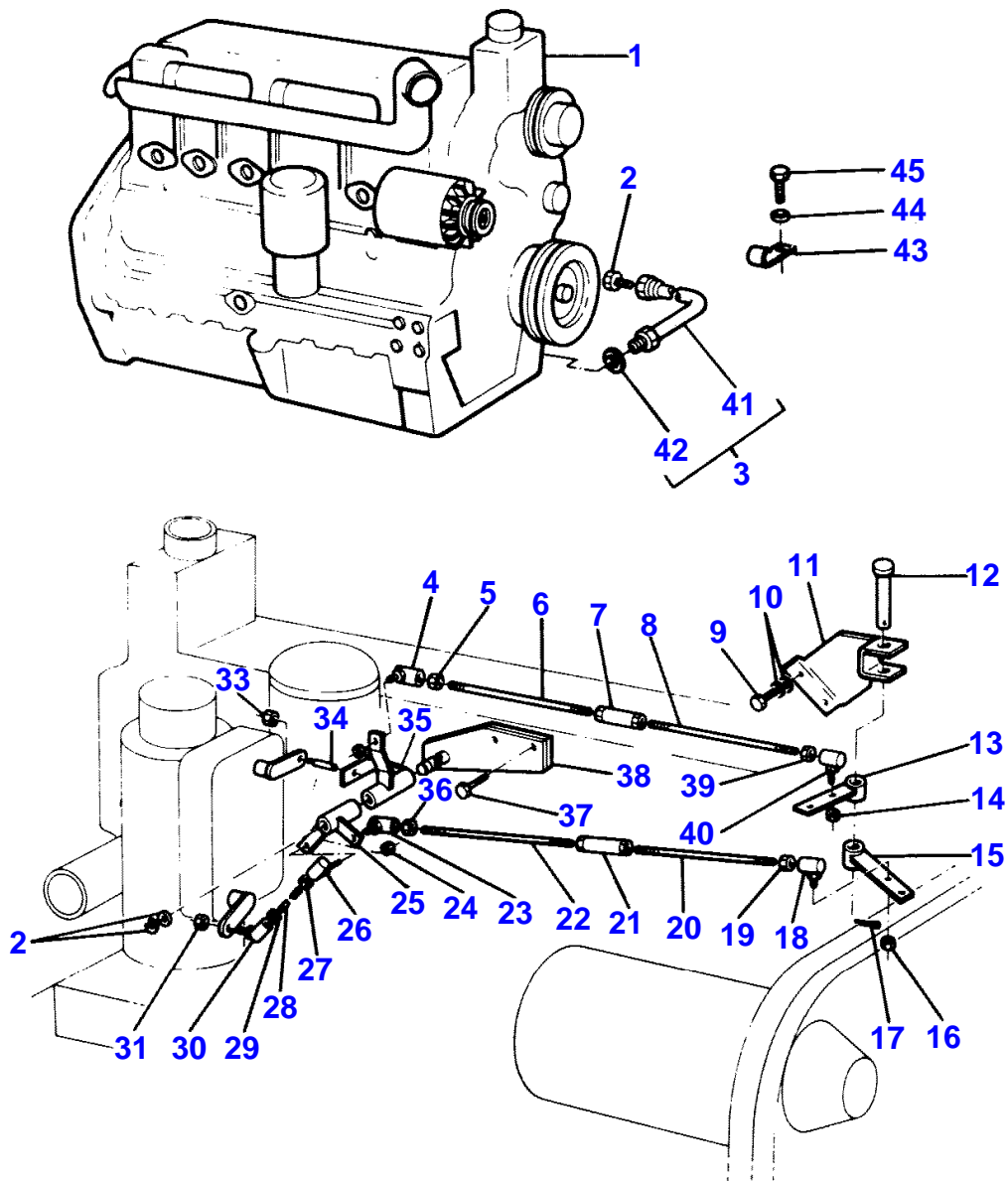
LIGHTING - SIGNALLING	536
LIGHTING - HAPPER SPOTLIGHT	538
LIGHTING - ROTAING LIGHT-HELLA	540
LIGHTING - WORKING LIGHT	542
MISCELLANEOUS	544
MISCELLANEOUS	546
TRANSFER FOR TABLE	548
TRANSFERS-ENGLISH	550
GUARDS-FAN - TABLE	558
GUARDS-FAN - GERMANY	560
WEIGHT FRAME AND WEIGHTS - WEIGHT	562
ELEVATOR - RICE MACHINE	564
ANTIWIND - RICE MACHINE	566
CYLINDER - RICE MACHINES- CONIC TEETH	568
CYLINDER - RICE MACHINE- TEETH WITH SPATULA	570
CONCAVE - RICE MACHINE	572
REAR AXLE - RICE MACHINE	576
REAR AXLE - RICE MACHINES	580
TRACK CHAIN - FINAL DRIVE	582
TRACK CHAIN	584
TRACK CHAIN	586
UNDERCARRIAGE	588
UNDERCARRIAGE	590
TRACK CHAIN - GUARDS	592
WHEELS - RICE MACHINE	594

2

MOTEUR ET ACCESSOIRES  
 MOTOR UND ZUBEHOER  
 MOTORE ED ACCESSORI  
 MOTOR Y ACCESORIOS  
 ENGINE AND ACCESSORIES

001C1026

1 0010 053



1- 0010- 053

MASSEY FERGUSON

MF 530/535 COMBINES, |-> 1115201 - 1637106

1637106

ENGINE AND ACCESSORIES

2

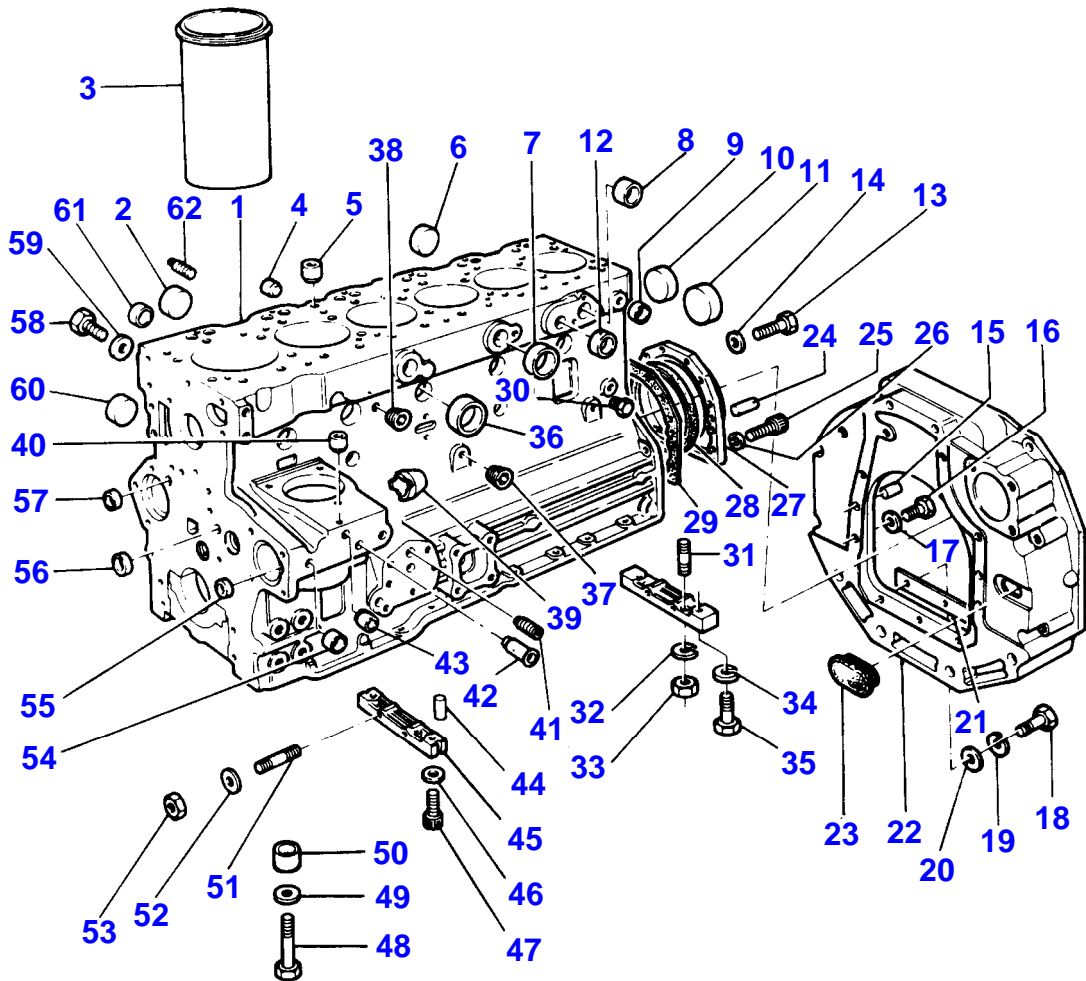
Item	Part Number	Qty	Description	Comments
1	3049557M91	1	Engine	
2	356446X1	1	Plug	
3	3371689M91	1	Hydr Hose	
4	353919X1	1	Nut Unf	
5	353919X1	1	Nut Unf	
6	3044979M1	1	Stem	
7	525396M1	1	Buckle	
	338160X1	1	Nut	
8	3049619M1	1	Stem	
9	363517X1	2	Pin	
10	353446X1	2	Lock Washer	
	353755X1	2	Washer	
11	3049017M91	1	Bearer	
12	195612M1	1	Pin	
13	3044960M91	1	Lever	
14	353919X1	1	Nut Unf	
15	3044963M91	1	Lever	
16	353919X1	1	Nut Unf	
17	354057X1	1	Pin	
18	3049874M1	1	Toggle	
19	353919X1	1	Nut Unf	
20	3049619M1	1	Stem	
21	525396M1	1	Buckle	
	338160X1	1	Nut	
22	3044979M1	1	Stem	
23	3049874M1	1	Toggle	
24	353919X1	2	Nut Unf	
25	3044952M91	1	Lever	
26	3049874M1	1	Toggle	
27	353919X1	1	Nut Unf	
28	3044982M1	1	Stem	
29	353919X1	1	Nut Unf	
30	3045150M91	1	Toggle	
31	357515X1	1	Nut Unf	
32	353756X1	1	Washer	
33	358656X1	1	Nut	
34	271675M1	1	Clevis Pin	
35	3044950M91	1	Lever	
36	353919X1	1	Nut Unf	
37	353540X1	2	Screw Unf	
38	3044956M91	1	Bearer	
39	353919X1	1	Nut Unf	
40	3049874M1	1	Toggle	
41		1	Hydr Hose	
				3
				Not serviced, order REF. 3
42	831497M1	1	O Ring	
				3
43	360059X1	1	Tie	
44	356446X1	1	Plug	
45	353516X1	1	Screw Unf	

4

BLOC CYLINDRES  
 ZYLINDERBLOCK  
 BLOCCO CILINDRI  
 BLOQUE DE CILINDROS  
 CYLINDER BLOCK

00501018

1 0050 018



1-0050-018

CYLINDER BLOCK

Item	Part Number	Qty	Description	Comments
1	63621	1	Cylinder Block	
2	0650618	6	Plug	1
3	31358393	6	Liner	1 (A)
3	31358394	6	Liner	(B)
4	32417133	1	Plug	
5	32417134	1	Plug	
6	0650618	7	Plug	
7	0650710	4	Plug	1
8	0650618	1	Plug	
9	0650563	1	Plug	
10	0650618	1	Plug	1
11	32416105	1	Plug	
12	0650664	1	Plug	1
13	0746211	10	Bolt	
14	0920003	10	Washer	
15	32455119	2	Dowel	
16	0746454	6	Setscrew	
17	33115129	6	Washer	
18	0746253	3	Screw	
19	0920053	3	Washer	
20	0920003	3	Washer	
21	36125305	1	Cover	
22	37147644	1	Plate	
23	37813113	1	Plug	
24	0350009	2	Dowel	
25	2172530	2	Capscrew	
26	33112111	2	Washer	
27	37513851	1	Housing	
28	2415391	1	Seal	
29	36817157	1	Joint	
30	32161114	2	Plug	
31	0826214	4	Stud	
32	0920053	4	Washer	
33	0576002	4	Nut	
34	0920521	2	Washer	
35	2176369	2	Screw	
36	32417155	5	Plug	1
37	2431131	2	Plug	
38	0650586	2	Plug	1
39	32813108	1	Cover	
40	32417134	2	Plug	
41	0650586	1	Plug	
42	33435133	1	Tube	
43	32417143	1	Plug	
44	32811408	4	Joint	
45	36277831	2	Bridge Piece	
46	0920521	2	Washer	
47	2176369	2	Screw	
48	32166329	14	Bolt	1
49	33121421	14	Washer	
50	33142111	14	Thimble	1
51	0826201	2	Stud	
52	0920053	2	Washer	
53	0576002	2	Nut	
54	32417127	2	Plug	
55	32417115	1	Plug	
56	0650566	2	Plug	
57	32417115	2	Plug	
58	2232200	2	Screw	
59	2411107	2	Washer	
60	0650618	1	Plug	
61	32417117	1	Plug	
62	0650586	1	Plug	

(A)  
PRESS FIT  
(B)  
SLIP FIT

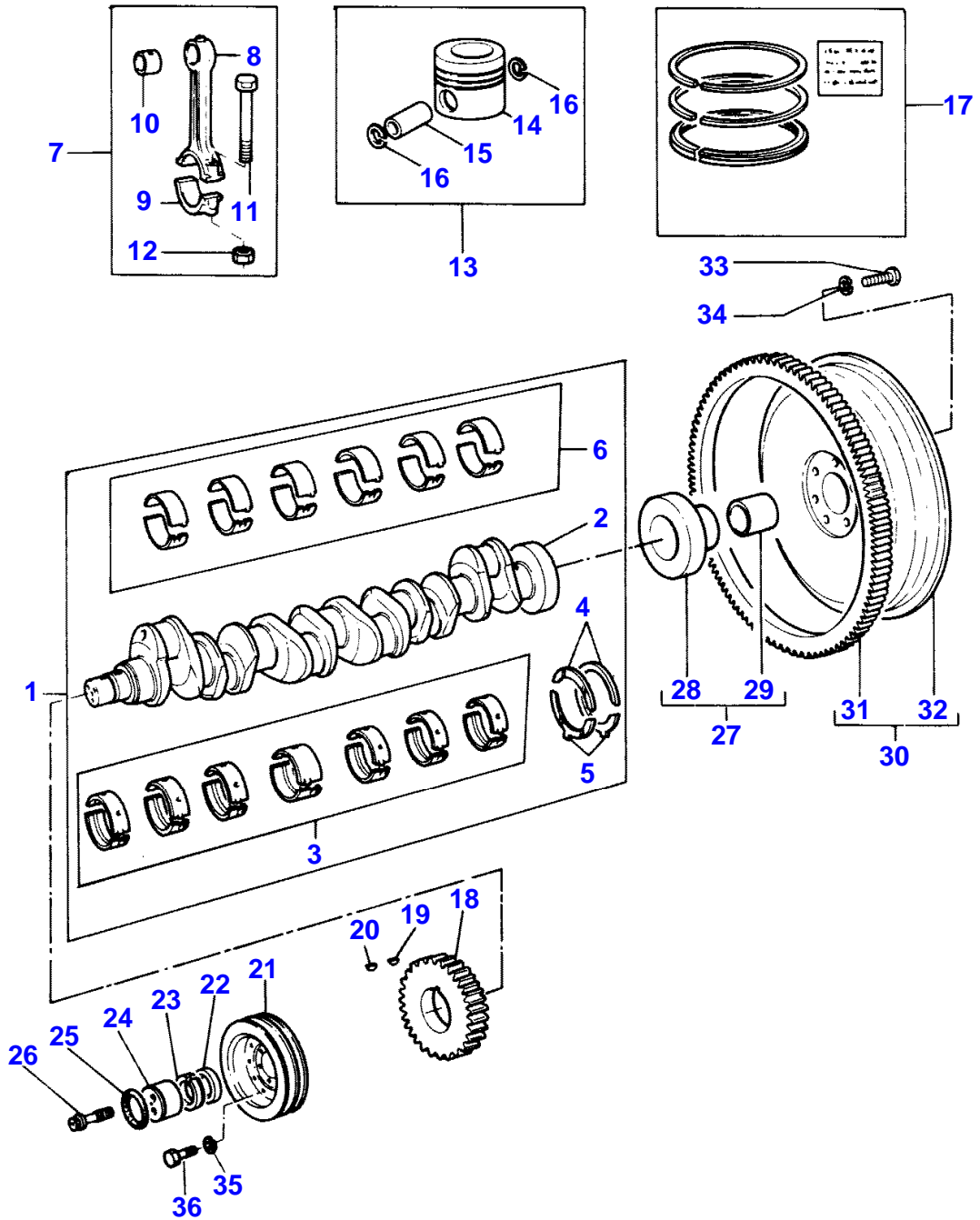


8

VILEBREQUIN  
 KURBELWELLE  
 ALBERO A MANOVELLA  
 CIGUENAL  
 CRANKSHAFT

00801012

1 0080 019



1-0080-019

IMPRIME EN FRANCE

530 535

1637106M1 (1) 04/82

CRANKSHAFT

Item	Part Number	Qty	Description	Comments
1	68076	1	Kit, Crankshaft	
2		1	Crankshaft	
				1
				Not serviced, order REF. 1
3	68079	1	Kit, Bearing	1
				(C)
3	68079A	X	Kit, Bearing	(C)
				Thickness -0.25 MM
3	68079B	X	Kit, Bearing	(C)
				Thickness -0.50 MM
3	68079C	X	Kit, Bearing	(C)
				Thickness -0.75 MM
4	31137311	2	Washer	1
	31137312	X	Thrust Washer	Thickness +0.17 MM
5	31137321	2	Washer	1
	31137322	X	Thrust Washer	Thickness +0.17 MM
6	85043	1	Kit, Bearing	1
				1
6	85043A	X	Kit, Bearing	Thickness -0.25 MM
				(C)
6	85043B	X	Kit, Bearing	Thickness -0.50 MM
				(C)
6	85043C	X	Kit, Bearing	Thickness -0.75 MM
				(C)
7	84920	6	Conrod	
8		1	Piston Rod	7
				Not serviced, order REF. 7
9		1	Cap	7
				Not serviced, order REF. 7
10	31134131	1	Bush	7
11	32762116	2	Bolt	7
12	33221321	2	Nut	7
13	86740	6	Kit, Piston	(B)
13	68314	6	Kit, Piston	(A)
14		1	Piston	13
				Not serviced, order REF. 13
15		1	Piston Pin	13
				Not serviced, order REF. 13
16	2721A029	2	Circlip	13
17	86785	6	Kit, Ring	
18	31171211	1	Gear,Crankshaft	
19	0500012	1	Woodruff Key	
20	0500005	1	Woodruff Key	
21	31153111	1	Pulley,Crank	
22	33125412	1	Spacer	
23	2417711	2	Element	
24	32418313	1	Thrust Plate	
25	2415638	1	O Ring	
26	32186133	3	Screw	
27	41425216	1	Adaptor	
28		1	Adaptor	27
				Not serviced, order 41425216
29	2513246	1	Bush	27
30	41117088	1	Flywheel	
31	0410264	1	Gear,Starterring	30
32		1	Flywheel	30
				Not serviced, order 41117088
33	0746853	6	Bolt	
34	33117121	6	Washer	
35			Not Used	
36			Not Used	
				(A)
				UNTOPPED
				(B)
				PRE-TOPPED

MASSEY FERGUSON

MF 530/535 COMBINES, |-> 1115201 - 1637106

1637106

CRANKSHAFT

8

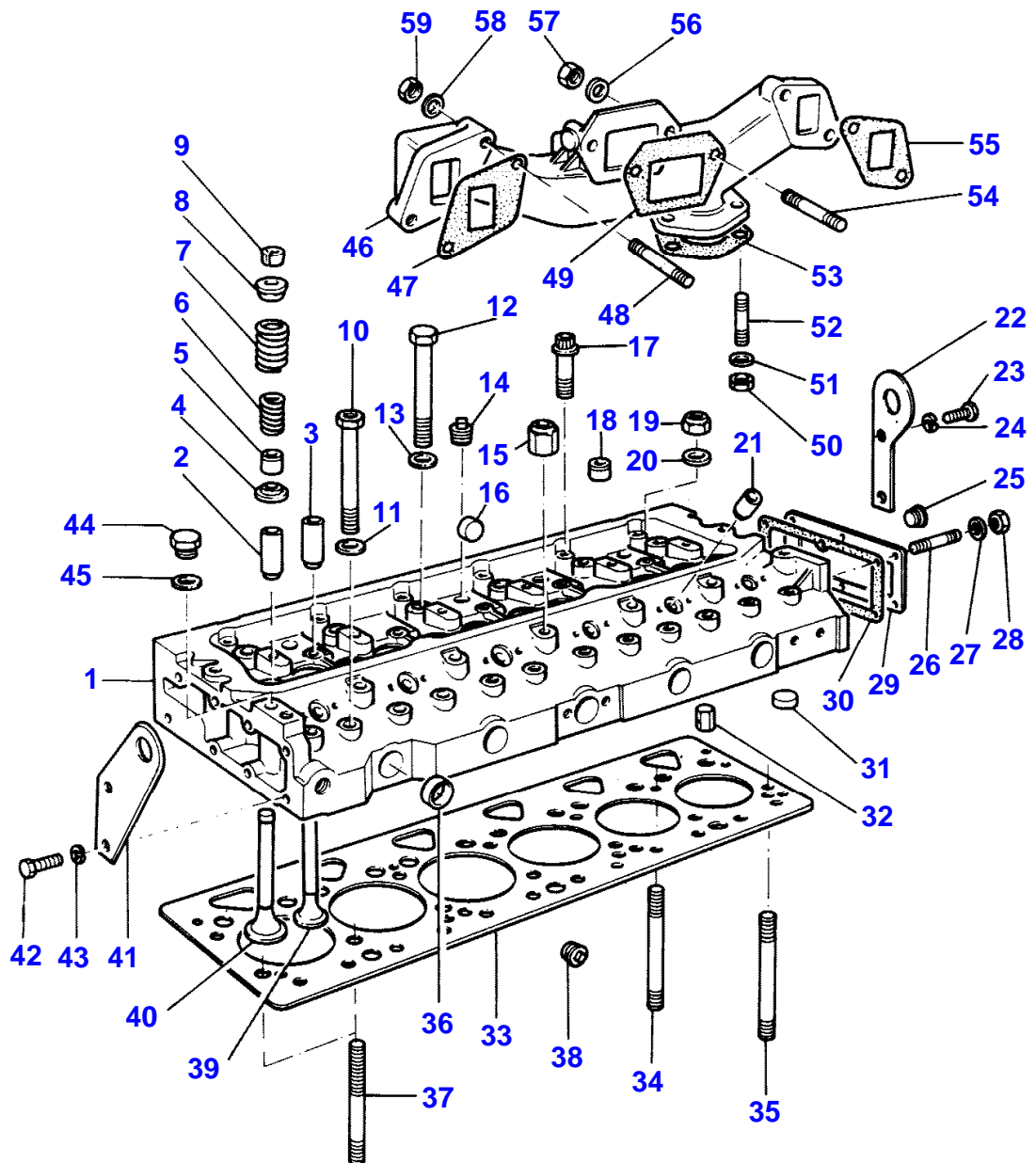
Item	Part Number	Qty	Description	Comments
				(C) PRE-FINISHED

12

CULASSE  
 ZYLINDERKOPF  
 TESTATA  
 CULATA  
 CYLINDER HEAD

00751014

1 0075 013



1-0075-013

IMPRIME EN FRANCE

520 525

\*\*\*\*\*

CYLINDER HEAD

Item	Part Number	Qty	Description	Comments
1	68169	1	Cylinder Head	
2	33261732	6	Guide	1
3	33261754	6	Guide	1
4	33415118	12	Washer	1
5	33817125	12	Seal	1
6	31744131	12	Spring	1
7	31745121	12	Spring	1
8	33423122	12	Cap	1
9	33173108	12	Cotter	1
				(A)
10	32181454	12	Screw	
11	33117122	12	Washer	
12	32181243	6	Screw	
13	33117122	6	Washer	
14	2431154	3	Plug	1
15	33287344	2	Nut	
16	32417127	6	Plug	1
17	2172142	6	Bolt	
18	32114501	3	Plug	
19	33221322	12	Nut	
20	33117122	14	Washer	
21	33242112	6	Sleeve	1
22	36237734	1	Bracket	
23	0746453	2	Setscrew	
24	0920054	2	Washer	
25	2431154	1	Plug	
26	0826244	6	Stud	
27	0920053	6	Washer	
28	0576002	6	Nut	
29	37532113	1	Plate	
30	0490485	1	Joint	
31	32417122	13	Plug	1
32	2116190	2	Dowel	
33	36812607	1	Gasket	
34	32526324	9	Stud	
35	32526323	3	Stud	
36	0650563	4	Plug	1
37	32526319	2	Stud	
38	2431154	1	Plug	
39	31431961	6	Valve Exhaust	1
40	31431315	6	Valve Inlet	1
41	36237728	1	Plate	
42	0096432	2	Screw	
43	0920054	2	Washer	
44	0650203	1	Plug	
45	2411107	1	Washer	
46	37782274	1	Exhaust Manifold	
47	36862124	1	Joint	
48	0826521	4	Stud	
49	36862129	1	Joint	
50	2188135	3	Nut	
51	0920004	3	Washer	
52	0827818	3	Stud	
53	36822111	1	Joint	
54	0826450	2	Stud	
55	36862124	1	Joint	
56	0920469	2	Spacer	
57	2188135	2	Nut	
58	0920469	4	Spacer	
59	2188135	4	Nut	

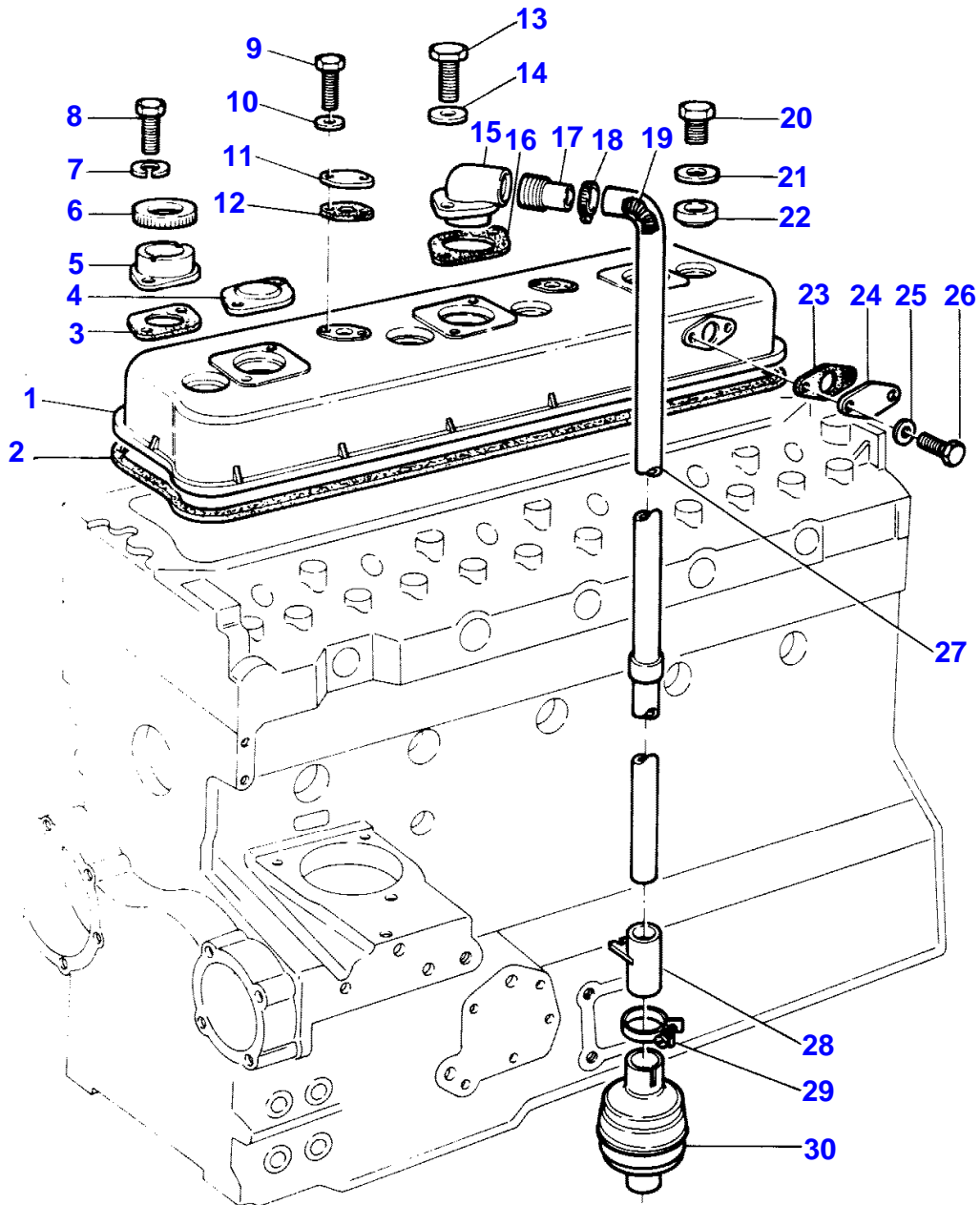
(A)  
SERVICED IN PAIRS

16

CACHE CULBUTEURS  
 ZYLINDERKOPFDECKEL  
 COPERCHIO TESTATA  
 TAPA CULATA  
 CYLINDER HEAD COVER

00851009

1 0085 010



1-0085-010

IMPRIME EN FRANCF

530 535

163710001 1/11 04/87

**Buy Now**



Our support email:

[ebooklibonline@outlook.com](mailto:ebooklibonline@outlook.com)