

Page Title	Page Number
ENGINE AND ACCESSORIES	2
CYLINDER BLOCK	4
CRANKSHAFT	8
CYLINDER HEAD	12
CYLINDER HEAD COVER	14
ROCKER ARM	16
AIR INDUCTION	18
TIMING GEAR	20
LUBRICATING OIL SYSTEM	22
LUBRICATING OIL FILTER	24
WATER PUMP	26
FUEL PIPINGS	28
FUEL OIL LIFT PUMP	32
FUEL FILTER	34
FUEL INJECTION EQUIPMENT	36
TURBOCHARGER	38
TURBOCHARGER - PIPE	40
TURBOCHARGER - BRACKET	42
LUBRICATING OIL COOLER	44
AUXILIARY DRIVE	46
JOINTS AND GASKETS	48
ALTERNATOR POSITIONER	50
ALTERNATOR-LUCAS	52
STARTER-LUCAS	54
ELECTRICAL EQUIPMENT	56
RADIATOR	58
RADIATOR - TUBE	60
ROTATING AIR INTAKE	62
FUEL TANK AND ATTACHMENTS - 200 LITRES	64
FUEL TANK AND ATTACHMENTS - 300 L	68
FUEL TANK AND ATTACHMENTS - ATTACHEMENT TANK 300L	69A
FUEL TANK AND ATTACHMENTS - ATTACHEMENT TANK 300L	69C
FUEL TANK AND ATTACHMENTS - TUBE	70
FUEL TANK AND ATTACHMENTS - COWL	72
AIR FILTER	74
AIR FILTER - DETAIL- DONALDSON	76
AIR FILTER - DETAIL- PROUST	78
AIR PRE FILTER	80
EXHAUST SYSTEM	82
ENGINE FRAME	84
MOTOR COVER	86
MOTOR COVER - CONTINUED	90
KNIFE	92
KNIFE - 14'	96
WOBBLE DRIVE	100
TABLE DRIVE - 12'	102
TABLE DRIVE - 14'	106
REEL CONTROL HEADS AND TINE SUPPORT BAR	110
REEL CONTROL HEADS AND TINE SUPPORT BAR - 14'	112
REEL DRIVING SHAFTS AND BEARING SUPPORTS	114
CONVEYOR ASSEMBLY APRON AND DRIVES - MAT	118
CONVEYOR ASSEMBLY APRON AND DRIVES - UNIVERSAL TABLE	122
CONVEYOR ASSEMBLY TENSION ROLLER - UNIVERSAL TABLE- 12'-14'	126
REEL ARMS AND SLOP ASSEMBLIES	128
AUGER	130
AUGER - 14'	136
TABLE	142
TABLE - 14'	146
DIVIDERS SLOPING	150
DIVIDERS HARPOON	152
ATHC - MECHANICAL- 12'	156
ATHC - 14'	158
ATHC - MECHANICAL	159A
ATHC - MECHANICAL	159C
ATHC - MECHANICAL	159E
SENSING FINGERS	160

TABLE OF CONTENT

SENSING FINGERS - UNIVERSAL TABLE- 14'	162
CLUTCH	164
TABLE GUARDS	166
TABLE GUARDS - RAPE	168
TABLE GUARDS - RAPE- 14'	170
TRANSFER FOR TABLE	172
KNIFE - 10'	174
KNIFE - 12'	176
KNIFE - 14'	178
KNIFE - 16'	180
WOBBLE DRIVE	182
TABLE DRIVE - 10'	184
TABLE DRIVE - 12'	188
TABLE DRIVE - 14'	192
TABLE DRIVE - 16'	196
REEL - 10'	200
REEL - 12'	202
REEL - 14'	204
REEL - 16'	206
REEL DRIVING SHAFTS AND BEARING SUPPORTS	207A
REEL DRIVING SHAFTS AND BEARING SUPPORTS	207C
REEL - DRIVING SHAFTS	208
REEL CARRIER	212
AUGER - 10'	214
AUGER - 12'	218
AUGER - 14'	222
AUGER - 16'	226
TABLE - 10'	230
TABLE - 12'	234
TABLE - 14'	238
TABLE - 16'	242
DIVIDERS SLOPING	246
DIVIDER - TALL CROP	248
DIVIDERS HARPOON	250
ATHC - MECHANICAL- 10'	252
ATHC - MECHANICAL- 12'	254
ATHC - MECHANICAL- 14'	256
ATHC - MECHANICAL- 16'	258
SENSING FINGERS - 10'	260
SENSING FINGERS - 12'	262
SENSING FINGERS - 14'	264
SENSING FINGERS - 16'	266
CLUTCH	268
GUARDS - TABLE	270
TRANSFER FOR TABLE	272
ELEVATOR	274
ELEVATOR - MAIZE-PLATE-ANGLEPIECE	278
ELEVATOR - UPPER SHAFT	280
ELEVATOR - DRUM	282
ELEVATOR - CHAIN	286
CYLINDER HOUSING - LEFT SIDE	288
CYLINDER HOUSING - RIGHT SIDE	290
CYLINDER HOUSING - INTERNAL COMPONENTS	292
CYLINDER HOUSING - DOOR-COVER	294
SEPARATOR CLUTCH - CONTROLS	296
SEPARATOR CLUTCH	300
REAR BEATER - DRIVING	302
REAR BEATER	304
CYLINDER	306
CYLINDER - SEED BEATER-MAIZE	310
CYLINDER - DRIVE GEAR BOX- GEAR TRAIN	312
CYLINDER - DRIVE GEAR BOX	314
CYLINDER - DRIVE	316
CONCAVE - REMOVABLE WIRE NOT FITTED	318
CONCAVE - UNIVERSAL	322
CONCAVE - REMOVABLE WIRES FITTED	324
CONCAVE - FIXED WIRES	328
CONTROL LINKAGE	330

TABLE OF CONTENT

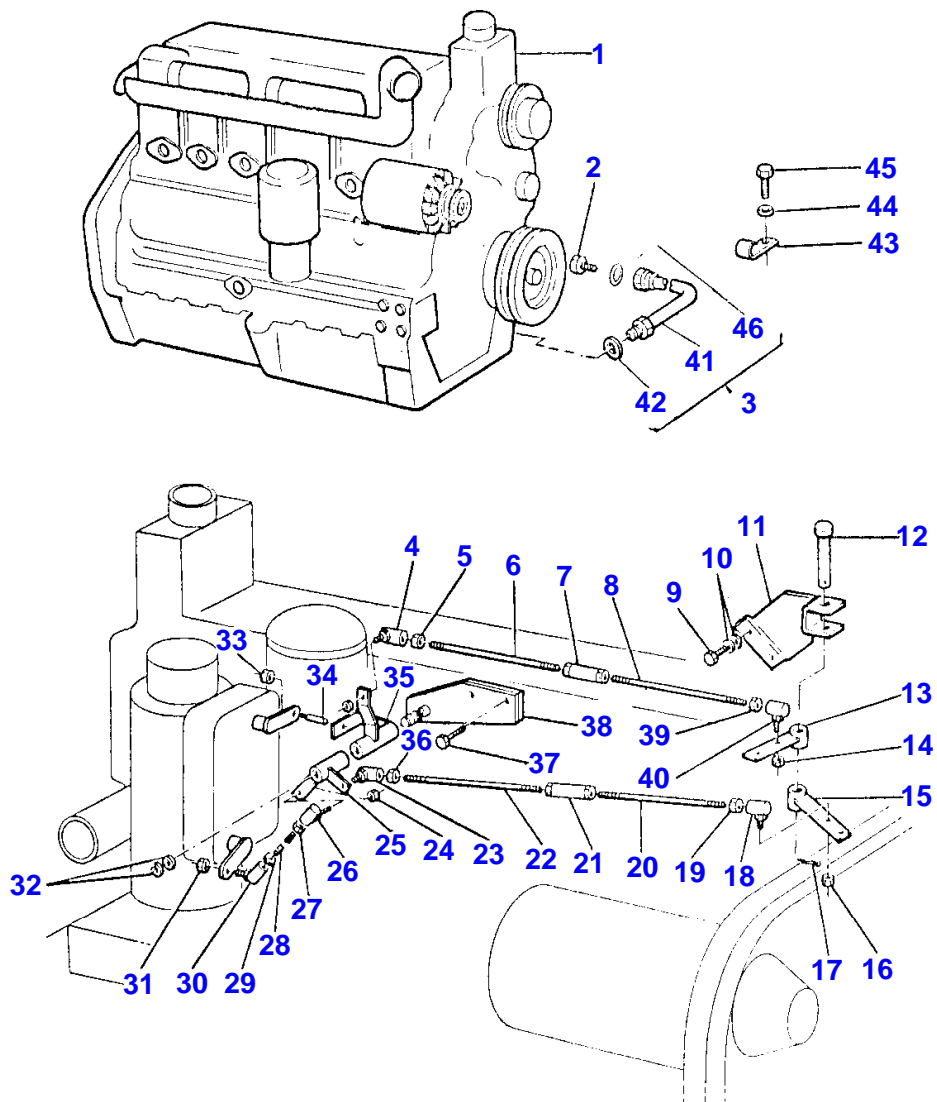
CONTROL LINKAGE - REAR	334
STONE STRAP	338
HOOD - HOOD-CASCADE SEPARATOR	340
HOOD - BELT SIGNAL	342
CASCADE SEPARATOR GRAIN ELEVATOR	345A
CASCADE SEPARATOR GRAIN ELEVATOR - UPPER COMPONENTS	345C
CASCADE SEPARATOR GRAIN ELEVATOR - LOWER COMPONENTS	345E
GRAIN ELEVATOR - UPPER COMPONENTS	346
GRAIN ELEVATOR - LOWER COMPONENT	350
CASCADE SEPARATOR - COWL	354
CASCADE SEPARATOR	358
CASCADE SEPARATOR - COWL	360
CASCADE SEPARATOR - GUARDS	362
SHAKER SHOE - DOUBLE SHOE	364
SHAKER SHOE - TRIPLE SHOE	366
SHAKER SHOE - SHAKER SHOE TRIPLE SHOE ATTACHMENT	367A
SHAKER SHOE - HILLSIDE KIT	367C
PAN - DRIVE	368
PAN	372
PAN - TRIPLE SHOE	374
PAN - SCREEN-MAIZE	376
SCREEN - DOUBLE SHOE	378
SCREEN - TRIPLE SHOE	380
SCREEN - DRIVE	382
FANNING HILL	384
SHAKER SHOE DRIVE	388
FANNING HILL - GUARDS	390
STRAW WALKER - UPPER DRIVE	392
STRAW WALKER - LOWER DRIVE	394
STRAW WALKER	396
STRAW WALKER - DIVIDER	398
STRAW WALKER BODY - EXTERNAL COMPONENTS	400
STRAW WALKER BODY - INTERNAL COMPONENTS	404
GLEANINGS ELEVATOR - UPPER COMPONENTS	406
GLEANINGS ELEVATOR - LOWER COMPONENT	408
GLEANINGS ELEVATOR - SLINGER HOUSING	412
RETURN ELEVATOR ALARM ARRANGEMENT	416
ALARM	418
MAIN FRAME - REINFORCEMENT	420
MAIN FRAME - REINFORCEMENT-TRACK	424
MAIN FRAME - DOOR	428
HOOD	430
GRAIN TANK - LEFT COMPONENT	432
GRAIN TANK - RIGHT COMPONENT	436
GRAIN TANK - LOWER COMPONENT	440
GRAIN TANK - LOWER AUGER	442
AUGER AND PITMAN CRANK	446
GRAIN TANK - EXTENSION	448
GRAIN TANK - EXTENSION-ADJUSTMENT	452
GRAIN TANK - ALARM	454
GRAIN TANK - CHAINS	456
GRAIN ELEVATOR - UPPER COMPONENTS	458
GRAIN ELEVATOR - LOWER COMPONENT	462
GRAIN ELEVATOR - CHAINS	464
UNLOADER DRIVE AND CONTROLS	466
AUGER LOWER	470
AUGER LOWER - LOWER COMPONENT	474
AUGER LOWER - EXTENSION	476
TANK FILLING CONTROL	478
FLYWHEEL	480
TRANSMISSION - RIGHT SIDE	484
TRANSMISSION - LEFT SIDE	490
TRANSMISSION - LEFT SIDE-GUARDS MAIZE	492
COUNTER SHAFT AND CLUTCH	494
COUNTER SHAFT AND CLUTCH - LUBRICATION	498
SECONDARY COUNTERSHAFT	500
TRACTION DRIVE - VARIATOR-WITH CONSTANT MESH TRANSMISSION GEAR BOX	502
TRACTION CLUTCH - WITH CONSTANT MESH TRANSMISSION GER BOX	504

TABLE OF CONTENT

TRACTION CLUTCH - CONTROLS-WITH CONSTANT MESH TRANSMISSION GEAR BOX	506
TRACTION CLUTCH - PEDAL	508
TRACTION CLUTCH - HYDRAULIC	510
FRONT AXLE FINAL DRIVE-4 WHEEL DRIVE	512
TRANSMISSION GEAR BOX - COVER-HOUSING- CONSTANT MESH	516
TRANSMISSION GEAR BOX - INPUT SHAFT- CONSTANT MESH	518
TRANSMISSION GEAR BOX - SECOND MOTION SHAFT- CONSTANT MESH	520
TRANSMISSION GEAR BOX - SPEED GEAR- CONSTANT MESH	522
TRANSMISSION GEAR BOX - DIFFERENTIAL- CONSTANT MESH	524
TRANSMISSION GEAR BOX - DRIVE-UPPER COMPONENTS	526
TRANSMISSION GEAR BOX - DRIVE-LOWER COMPONENTS	530
FRONT AXLE	532
HAND BRAKE	536
GEARBOX PARKING BRAKE - DRIVE	538
GEARBOX PARKING BRAKE	540
BRAKES OPERATING - HYDRAULIC	542
BRAKES OPERATING - PEDAL	544
DRUM BRAKE	548
OPERATORS PLATFORM - MODEL 82	550
OPERATORS PLATFORM - FROM SERIAL S1329701	554
OPERATORS PLATFORM - RAIL-LADDER	558
OPERATORS PLATFORM - RICE TRACK LADDER EXTENSION	561A
SEAT-SABLE	562
SPRING SUPPORT	566
CONTROL PANEL - HOUSING	570
CONTROL PANEL - GUARD LOWER	574
CONTROL PANEL - SOUND INSULATION	576
CONTROL PANEL - LEVER	578
CONTROL PANEL - LEVER	584
CONTROL PANEL - LEVER	585A
CONTROL PANEL - CABLE , FROM SERIAL NU	586
CONTROL PANEL - CABLE , FROM SERIAL NU	587A
CONTROL PANEL - CABLE , FROM SERIAL NU	587C
ATHC - KIT	587E
INSTRUMENTS - SUPPORT	588
INSTRUMENTS - INSTRUMENTS-SWITCH	590
INSTRUMENTS - JUNCTION	594
CAB - FRONT	596
CAB - REAR	598
CAB - RIGHT	600
CAB - LEFT	602
CAB - CONSOLE	604
CAB - LATCH LADDER	606
CAB - LATCH RAMP-GERMANY	608
CAB - MISCELLANEOUS	610
CAB - FLOOR	612
CAB - WIRING	614
AIR CONDITIONNER-COMPRESSOR - KYSOR	616
AIR CONDITIONNER-COMPRESSOR - KYSOR-BRACKET AND ASSEMBLING	618
AIR CONDITIONNER-CONDENSOR - KYSOR	620
AIR CONDITIONNER-CONDENSOR - BRACKET	624
AIR CONDITIONNER-EVAPORATOR - KYSOR	626
AIR CONDITIONNER-EVAPORATOR - KYSOR	628
STEERING COLUMN	630
STEERING COLUMN - HOUSING	632
STEERING COLUMN - ADJUSTING	634
STEERING PUMP	636
SAFETY BLOCK	638
REAR AXLE	640
WHEELS	642
HYDRAULIC CIRCUIT - CONTAINER-PUMP-VALVE	644
HYDRAULIC CIRCUIT - REEL	646
HYDRAULIC CIRCUIT - TABLE LIFT	648
HYDRAULIC CIRCUIT - STEERING	652
HYDRAULIC CIRCUIT - TRACTION VARIATOR	658
HYDRAULIC CIRCUIT - REAR BEATER CLUTCH	660
HYDRAULIC CIRCUIT - DISCHARGE CHUTE	662
UNLOADER SPOUT ARRANGEMENTS	666

TABLE OF CONTENT

HYDRAULIC PUMP	668
CONTROL VALVE - UPPER COMPONENTS	670
CONTROL VALVE - LOWER COMPONENT	672
RAM FOR TRACTION	674
RAM FOR STEERING	676
RAM FOR TABLE LIFT - RIGHT	678
RAM FOR TABLE LIFT - RIGHT	680
RAM FOR TABLE LIFT - LEFT	682
RAM FOR TABLE LIFT - LEFT	684
REEL HYDROSTATIC DRIVE - NEW PROFILE TABLE- OLD MOUNTING-PULLEY	686
REEL HYDROSTATIC DRIVE - PULLEY	688
REEL HYDROSTATIC DRIVE - NEW PROFILE TABLE- OLD MOUNTING-PINIONS	690
REEL HYDROSTATIC DRIVE - NEW PROFILE TABLE- 10'	694
REEL HYDROSTATIC DRIVE - NEW PROFILE TABLE- 12'	698
REEL HYDROSTATIC DRIVE - NEW PROFILE TABLE- 14'	702
REEL HYDROSTATIC DRIVE - NEW PROFILE TABLE- 16'- PINIONS	706
REEL HYDROSTATIC DRIVE - GEAR	710
REEL HYDROSTATIC DRIVE - UNIVERSAL TABLE- 14'- PINIONS	714
HYDRAULIC MOTOR	718
REEL FORE AND AFT HYDRAULICS - NEW PROFILE TABLE- 10'	720
REEL FORE AND AFT HYDRAULICS - NEW PROFILE TABLE- 12'	722
REEL FORE AND AFT HYDRAULICS - NEW PROFILE TABLE- 14'	724
REEL FORE AND AFT HYDRAULICS - NEW PROFILE TABLE- 16'	726
REEL FORE AND AFT HYDRAULICS	728
REEL FORE AND AFT HYDRAULICS - UNIVERSAL TABLE- 14'	730
REEL LIFT HYDRAULICS - NEW PROFILE TABLE- 10'	732
REEL LIFT HYDRAULICS - NEW PROFILE TABLE- 12'	734
REEL LIFT HYDRAULICS - NEW PROFILE TABLE- 14'	736
REEL LIFT HYDRAULICS - NEW PROFILE TABLE- 16'	738
REEL LIFT HYDRAULICS - UNIVERSAL TABLE- 12'	740
REEL LIFT HYDRAULICS - UNIVERSAL TABLE- 14'	742
REEL HYDRAULIC PUMP AND TANK - NEW PROFILE TABLE- OLD MOUNTING	744
REEL HYDRAULIC PUMP AND TANK	746
HYDRAULIC CIRCUIT - UNIVERSAL TABLE- 12'-14'- THIRD CYLINDER	747A
RAM FOR REEL LIFT - LEFT	748
RAM FOR REEL LIFT	750
RAM FOR REEL LIFT	752
RAM FOR REEL FORE AND AFT ARRANGEMENT - NEW PROFILE TABLE	754
RAM FOR REEL FORE AND AFT ARRANGEMENT	756
RAM FOR REEL FORE AND AFT ARRANGEMENT	758
LIGHTING - FRONT	760
LIGHTING - LAMP	762
LIGHTING - REAR	764
LIGHTING - SIGNALLING	768
LIGHTING - HAPPER SPOTLIGHT	770
LIGHTING - ROTAING LIGHT-HELLA 45W	772
LIGHTING - ROTAING LIGHT-HELLA 21W	774
LIGHTING - WORKING LIGHT	776
MISCELLANEOUS	778
MISCELLANEOUS	780
TRANSFERS	782
GUARDS - GERMANY	788
GUARDS - LEFT SIDE	789A
WEIGHT FRAME AND WEIGHTS - WEIGHT	790
ELEVATOR - RICE MACHINES .COWL. FUEL TANK	792
ANTIWIND - RICE MACHINES .COWL. FUEL TANK	794
CYLINDER - RICE MACHINES- CONIC TEETH	796
CYLINDER - RICE MACHINE- TEETH WITH SPATULA	798
CONCAVE - RICE MACHINE- TEETH WITH SPATULA	800
CONCAVE - RICE MACHINE- CONICAL TEETH	802
REAR AXLE - RICE MACHINES .COWL. FUEL TANK	804
REAR AXLE - RICE MACHINE	808
TRACK CHAIN	810
TRACK CHAIN	812
UNDERCARRIAGE	814
UNDERCARRIAGE	816
TRACK CHAIN - GUARDS RICE TRACK	818



1-0010-062

MASSEY FERGUSON

MF 660/665 COMBINES - 1637108

1637108

ENGINE AND ACCESSORIES

2

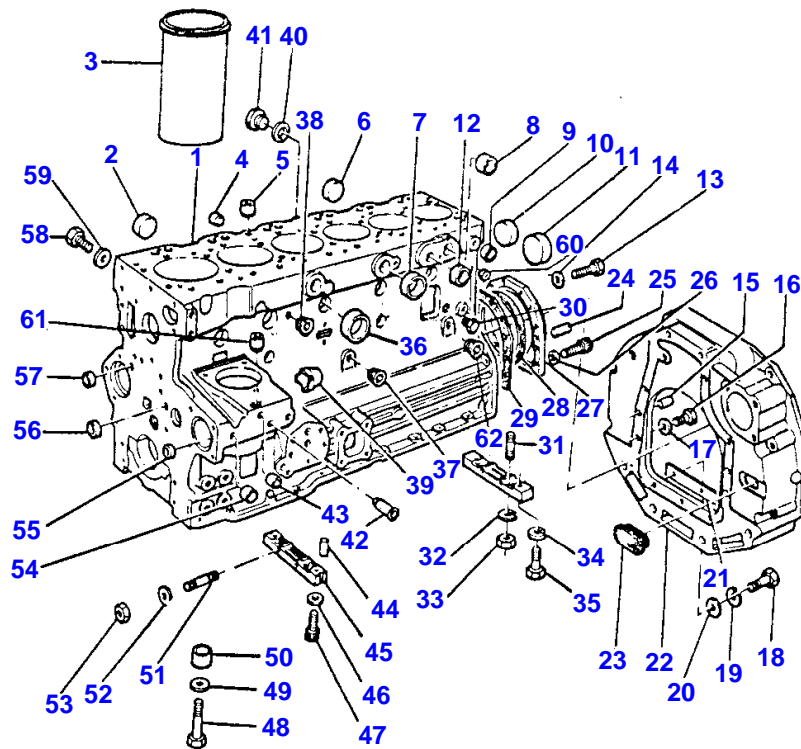
Item	Part Number	Qty	Description	Comments
1	3370976M91	1	Engine	T6.3544
2	356446X1	1	Plug	
3	3371689M91	1	Hydr Hose	
4	3045157M91	1	Toggle	
	353919X1	1	Nut Unf	
5	353919X1	1	Nut Unf	
6	3044979M1	1	Stem	
7	525396M1	1	Buckle	
	338160X1	1	Nut	
8	3049619M1	1	Stem	
9	353517X1	2	Screw Unf	
10	353446X1	2	Lock Washer	
	353755X1	2	Washer	
11	3049017M91	1	Bearer	
12	195612M1	1	Pin	
13	3044960M91	1	Lever	
14	353919X1	1	Nut Unf	
15	3044963M91	1	Lever	
16	353919X1	1	Nut Unf	
17	354057X1	1	Pin	
18	3052849M1	1	Toggle	
19	353919X1	1	Nut Unf	
20	3049619M1	1	Stem	
21	525396M1	1	Buckle	
	338160X1	1	Nut	
22	3044979M1	1	Stem	
23	3052849M1	1	Toggle	
24	353919X1	2	Nut Unf	
25	3044952M91	1	Lever	
26	3052849M1	1	Toggle	
27	353919X1	1	Nut Unf	
28	3044982M1	1	Stem	
29	353919X1	1	Nut Unf	
30	3045150M91	1	Toggle	
31	357515X1	1	Nut Unf	
32	353756X1	1	Washer	
	355848X1	1	Snapping	
33	358656X1	1	Nut	
34	271675M1	1	Clevis Pin	
35	3044950M91	1	Lever	
36	353919X1	1	Nut Unf	
37	353540X1	2	Screw Unf	
38	3044956M91	1	Bearer	
39	353919X1	1	Nut Unf	
40	3052849M1	1	Toggle	
41		1	Hydr Hose	(3) Not serviced, order 3371689M91
42	831497M1	1	O Ring	(3)
43	360059X1	1	Tie	
44	356446X1	1	Plug	
45	353516X1	1	Screw Unf	
46	831497M1	1	O Ring	(3)

4

BLOC CYLINDRES  
ZYLINDERBLOCK  
BLOCCO CILINDRI  
BLOQUE DE CILINDROS  
CYLINDER BLOCK

00501029

1 0050 036



1 - 0050 - 036



CYLINDER BLOCK

Item	Part Number	Qty	Description	Comments
1	63614	1	Cylinder Block	
2	0650618	6	Plug	(1)
3	31358393	6	Liner	(1) (A)
3	31358394	6	Liner	(B)
4	32417133	1	Plug	
5	32417134	1	Plug	
6	0650618	14	Plug	
7	0650710	4	Plug	(1)
8	0650618	1	Plug	
9	0650563	1	Plug	
10	0650618	2	Plug	(1)
11			Not Used	
12	0650664	1	Plug	(1)
13	0746211	10	Bolt	
14	0920003	10	Washer	
15	32455119	2	Dowel	
16	0746424	6	Bolt	
17	33115129	6	Washer	
18	0746253	3	Screw	
19	0920053	3	Washer	
20	0920003	3	Washer	
21	36125305	1	Cover	
22	37147644	1	Plate	
23	37813113	1	Plug	
24	0350009	2	Dowel	
25	2172530	2	Capscrew	
26	33112111	2	Washer	
27	37513851	1	Housing	
28	2415391	1	Seal	
29	36817157	1	Joint	
30	32161114	2	Plug	
31	0826214	4	Stud	
32	0920053	4	Washer	
33	0576002	4	Nut	
34	0920521	2	Washer	
35	2176369	2	Screw	
36	32417155	5	Plug	(1)
37	2431131	1	Plug	
38	0650586	1	Plug	(1)
39	32813108	1	Cover	
40	2411156	1	Washer	
41	32161317	1	Plug	
42	33435133	1	Tube	
43	32417143	1	Plug	
44	32811408	4	Joint	
45	36277831	2	Bridge Piece	
46	0920521	2	Washer	
47	2176369	2	Screw	
48	32166329	14	Bolt	(1)
49	33121421	14	Washer	
50	33142111	14	Thimble	(1)
51	0826201	2	Stud	
52	0920053	2	Washer	
53	0576002	2	Nut	
54	32417127	2	Plug	
55	32417115	1	Plug	
56	0650566	2	Plug	
57	32417115	2	Plug	
58	32168231	4	Plug	
59	2411157	4	Washer	
60			Not Used	
61			Not Used	
62	2431131	1	Plug	

(A)  
PRESS FIT

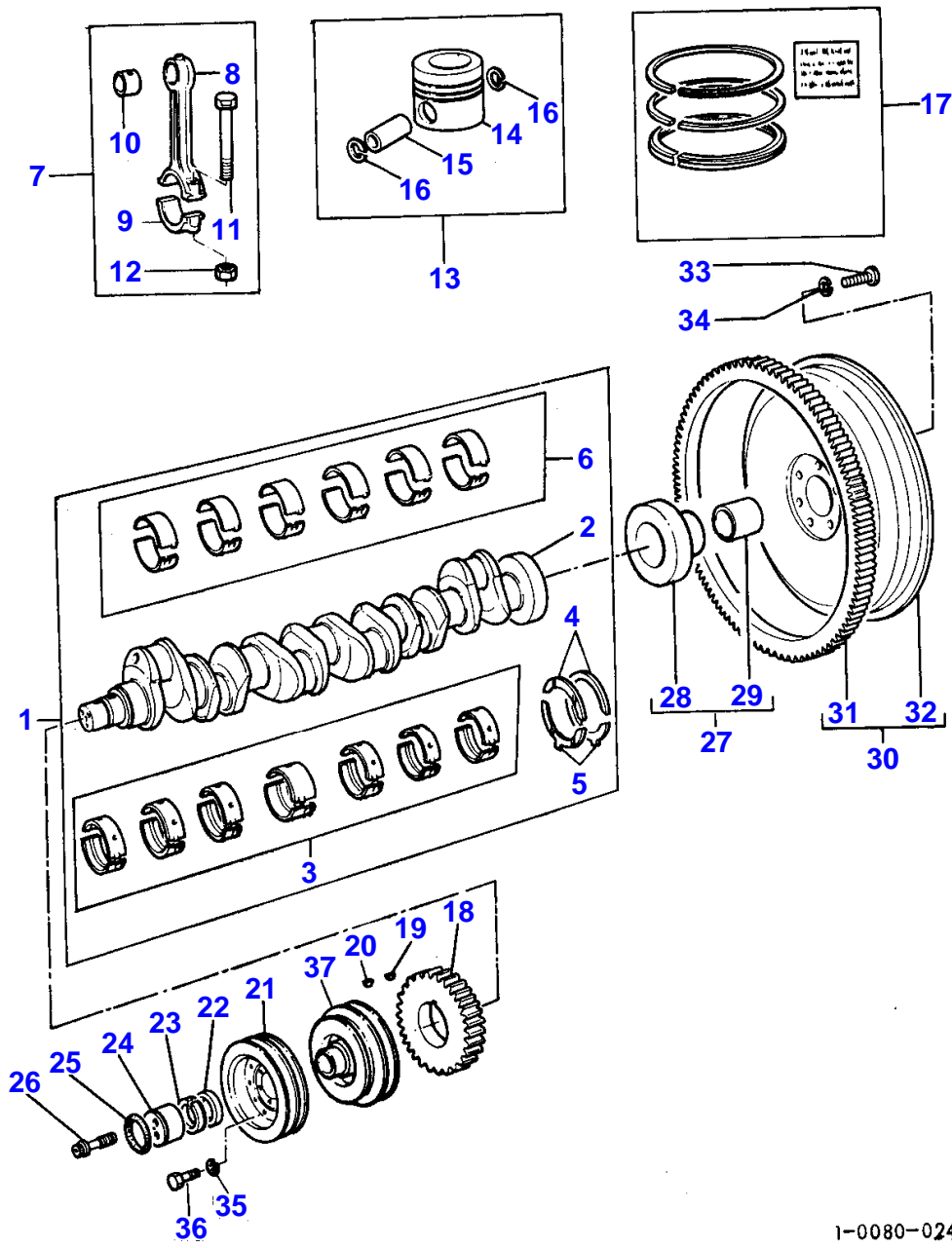
(B)  
SLIP FIT

8

VILEBREQVIN  
 KURBELWELLE  
 ALBERO A MANOVELLA  
 CIGUENAL  
 CRANKSHAFT

00801022

1 0080 024



1-0080-024

CRANKSHAFT

Item	Part Number	Qty	Description	Comments
1	68077	1	Kit, Crankshaft	
2		1	Crankshaft	(1) Not serviced, order REF NO1
3	68079	1	Kit, Bearing	(C)
	68079A	X	Kit, Bearing	(C) Thickness -0,25MM
3	68079B	X	Kit, Bearing	(C) Thickness -0,50MM
3	68079C	X	Kit, Bearing	(C) Thickness -0,75MM
4	31137311	2	Washer	(1)
	31137312	X	Thrust Washer	Thickness +0,17MM
5	31137321	2	Washer	(1)
	31137322	X	Thrust Washer	Thickness +0,17MM
6	89064	1	Kit, Bearing	(1) (C)
6	89064A	X	Kit, Bearing	(C) Thickness 0,25MM
6	89064B	X	Kit, Bearing	(C) Thickness 0,50MM
6	89064C	X	Kit, Bearing	Thickness 0,75MM
7	41152923	6	Conrod	Repairs and replaces 63408
8		1	Piston Rod	(7) Not serviced, order REF NO7
9		1	Cap	(7) Not serviced, order REF NO7
10	31134131	1	Bush	(7)
11	32762116	2	Bolt	(7)
12	33221328	2	Nut	(7) Repairs and replaces 33221321
13	68802	6	Kit, Piston	(A) Repairs and replaces 68390
13	68803	6	Kit, Piston	(B) Repairs and replaces 68391
14		1	Piston	(13) Not serviced, order REF NO13
15		1	Piston Pin	(13) Not serviced, order REF NO13
16	2721A029	2	Circlip	(13)
17	41158005	6	Kit, Piston Ring	Repairs and replaces 68238
18	31171211	1	Gear,Crankshaft	
19	0500012	1	Woodruff Key	
20	0500005	1	Woodruff Key	
21	31153161	1	Pulley,Crank	
22	33125412	1	Spacer	
23	2417711	1	Element	
24	32418313	1	Thrust Plate	
25	2415638	1	O Ring	
26	32186133	3	Screw	
27	41425216	1	Adaptor	
28		1	Adaptor	(27) Not serviced, order REF NO27
29	2513246	1	Bush	(27)
30	41117088	1	Flywheel	
31	0410264	1	Gear,Starterring	(30)
32		1	Flywheel	(30) Not serviced, order REF NO30
33	0746853	6	Bolt	
34	33117121	6	Washer	
35	0920053	9	Washer	
36	0096236	9	Bolt	
37	2635679	1	Pulley,Crank	Up to Serial or Engine Number
	2635674	1	Pulley,Crank	From Serial or Engine Number
				(A) UNTOPPED
				(B) PRE-TOPPED

MASSEY FERGUSON

MF 660/665 COMBINES - 1637108

1637108

CRANKSHAFT

8

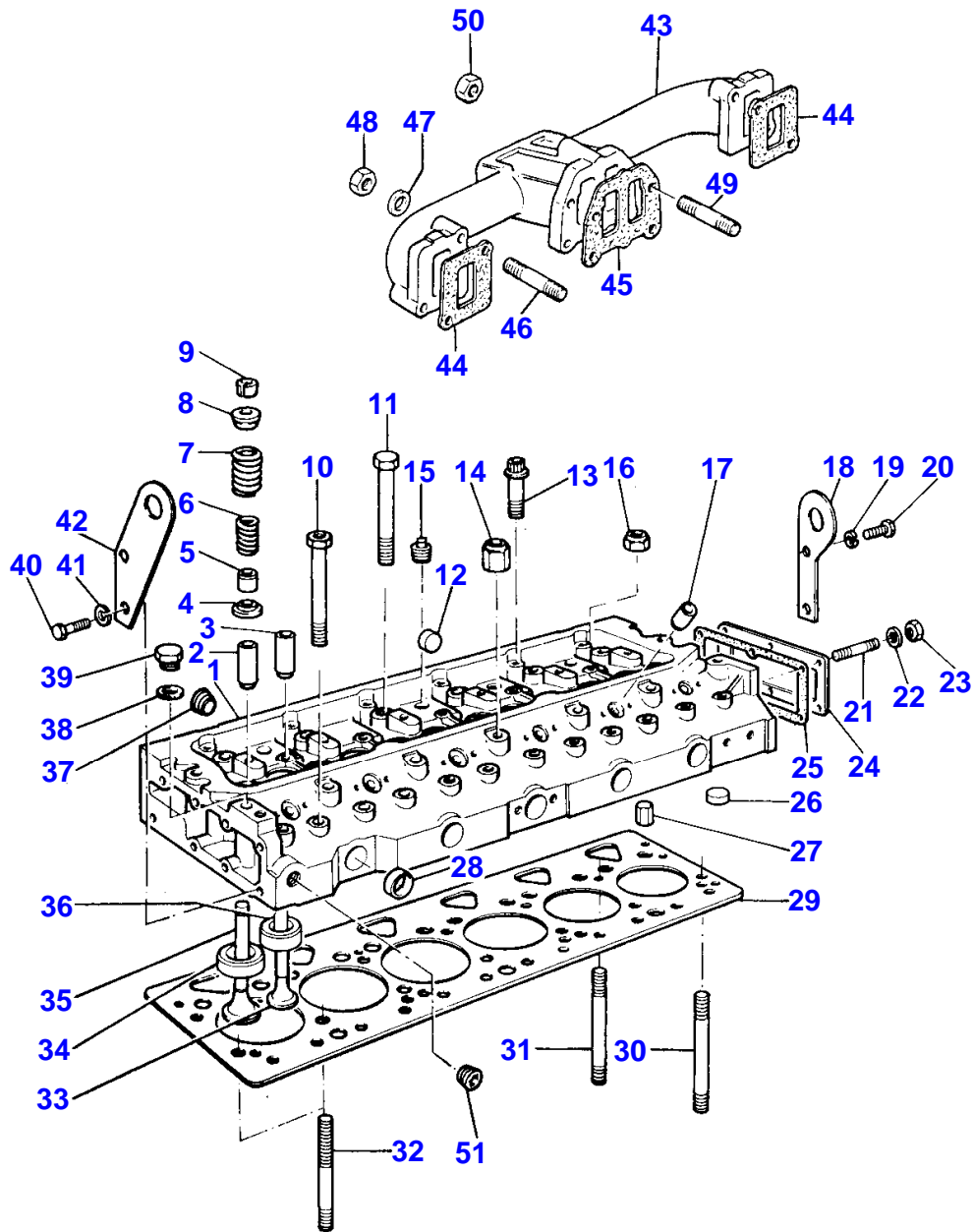
Item	Part Number	Qty	Description	Comments
				(C) PRE-FINISHED

12

CULASSE  
 ZYLINDERKOPF  
 TESTATA  
 CULATA  
 CYLINDER HEAD

00751019

1 0075 022



1-0075-022

CYLINDER HEAD

Item	Part Number	Qty	Description	Comments
1	68172	1	Cylinder Head	
2	33261732	6	Guide	(1)
3	33261752	6	Guide	(1)
				Repairs and replaces 33261754
4	33415118	12	Washer	(1)
5	33817117	12	Seal	(1)
6	31744131	12	Spring	(1)
7	31745121	12	Spring	(1)
8	33423122	12	Cap	(1)
9	33173108	12	Cotter	(1)
10	32166219	12	Bolt	
11	32166221	6	Bolt	
12	32417127	6	Plug	(1)
13	2172142	6	Bolt	
14	33531131	2	Nut	Up to Serial or Engine Number
15	2431154	3	Plug	(1)
16	33531132	13	Nut	Repairs and replaces 33531128
17	33242112	6	Sleeve	(1)
18	36237734	1	Bracket	
19	0920054	2	Washer	
20	0746453	2	Setscrew	
21	0826244	6	Stud	
22	0920053	6	Washer	
23	0576002	6	Nut	
24	0940737	1	Plate	
25	0490485	1	Joint	
26	32417122	13	Plug	(1)
27	2116190	2	Dowel	
28	0650563	4	Plug	(1)
29	36812607	1	Gasket	
30	32526323	4	Stud	Repairs and replaces 32526321
31	32526324	8	Stud	
32	32526319	2	Stud	
33	31431961	6	Valve Exhaust	(1)
				Repairs and replaces 31431752
34	33152155	6	Insert	(1)
35	31431315	6	Valve Inlet	(1)
36	33152154	6	Insert	(1)
37	32114501	1	Plug	
38	2411157	1	Washer	
39	0650203	1	Plug	
40	0096432	2	Screw	
41	0920054	2	Washer	
42	36237728	1	Plate	
43	37783161	1	Exhaust Manifold	
44	36862191	2	Gasket	
45	36866746	1	Joint	
46	0826509	4	Stud	
47	33115117	8	Spacer	
48	2188135	4	Nut	
49	0826439	4	Stud	
50	2188135	4	Nut	
51	2431154	1	Plug	

**Buy Now**



Our support email:

[ebooklibonline@outlook.com](mailto:ebooklibonline@outlook.com)