

Page Title	Page Number
ENGINE AND ACCESSORIES	2
CYLINDER BLOCK - A6.354.4 ENGINE	4
FLYWHEEL HOUSING - A6.354.4 ENGINE	8
CRANKSHAFT, PISTONS AND CONNECTING RODS - A6.354.4 ENGINE	10
CYLINDER HEAD - A6.354.4 ENGINE	14
ROCKER SHAFT - A6.354.4 ENGINE	16
INDUCTION MANIFOLD - A6.354.4 ENGINE	20
EXHAUST MANIFOLD - A6.354.4 ENGINE	22
ENGINE LIFTING - A6.354.4 ENGINE	24
TIMING GEAR AND CAMSHAFT - A6.354.4 ENGINE	26
FRONT END DRIVE INPUT AND OUTPUT - A6.354.4 ENGINE	30
AUXILIARY DRIVE - A6.354.4 ENGINE	32
LUBRICATING OIL PUMP AND DELIVERY HOUSING - A6.354.4 ENGINE	34
LUBRICATING OIL SUMP - A6.354.4 ENGINE	36
LUBRICATING OIL FILLER AND BREATHER - A6.354.4 ENGINE	38
LUBRICATING OIL FILTER AND INTEGRAL COOLER - A6.354.4 ENGINE	40
WATER PUMP, THERMOSTAT AND HEAT EXCHANGER - A6.354.4 ENGINE	42
WATER OUTLET AND INLET - A6.354.4 ENGINE	46
FAN AND EXTENSION - A6.354.4 ENGINE	48
GEAR DRIVE AUXILIARY DRIVE OPTIONS - A6.354.4 ENGINE	50
FUEL INJECTION EQUIPMENT (DIESEL) - A6.354.4 ENGINE	52
LOW PRESSURE FUEL SYSTEM - A6.354.4 ENGINE	56
JOINTS AND GASKETS-TOP SERVICE KIT - A6.354.4 ENGINE	60
JOINTS AND GASKETS-BOTTOM SERVICE KIT - A6.354.4 ENGINE	62
BATTERY	64
TOOL BOX BATTERY BOX	66
ALTERNATOR-MOTOROLA - WITH CAB	68
ALTERNATOR-MOTOROLA - TRACTOR WITH PLATFORM	70
STARTER-LUCAS	72
STARTER-LUCAS	73A
RADIATOR - ASSEMBLING	74
RADIATOR - FEEDING	76
FUEL TANK AND ATTACHMENTS	78
FUEL TANK AND ATTACHMENTS - FUEL TUBE	80
AIR FILTER - EQUIPMENT	82
AIR FILTER - EQUIPMENT- WITH- ETHER	84
AIR FILTER - LAUTRETTE- UP TO SERIAL NO T 207204	86
AIR FILTER - LAUTRETTE : FROM SERIAL NO T 198210 FOR 2720- FROM SERIAL NO T 207205 FOR 2620-2640-2680	87A
EXHAUST SYSTEM	88
THROTTLE CONTROLS - HAND THROTTLE	90
THROTTLE CONTROLS - FOOTTHROTTLE.OLD MOUNTING	92
THROTTLE CONTROLS - INJECTION PUMP BEADCORE	94
THROTTLE CONTROLS - FOOTTHROTTLE	95A
FRONT SPACER	96
CLUTCH	98
CLUTCH PEDAL AND LINKAGE - PEDAL	100
CLUTCH PEDAL AND LINKAGE - MASTER CYLINDER	102
MASTER CYLINDER	104
TRANSMISSION	106
TRANSMISSION-HOUSING - UP TO SERIAL NB K 204204	108
TRANSMISSION-HOUSING - FROM SERIAL NB K204205	110
TRANSMISSION - UP TO SERIAL NO S 268000	114

TABLE OF CONTENT

16 SPEED TRANSMISSION-COVER	116
16 SPEED TRANSMISSION-COVER - POWER TAKE OFF SHAFT- UP TO SERIAL NO K 223205	118
16 SPEED TRANSMISSION-COVER - POWER TAKE OFF SHAFT- FROM TO SERIAL NO K 223206	120
16 SPEED TRANSMISSION-COVER - GAMMA 2 CLUTCH SHAFT	122
16 SPEED TRANSMISSION-COVER - GAMMA 2 COVER	124
16 SPEED TRANSMISSION-COVER - CREEPER GEAR - FRONT COVER	126
16 SPEED TRANSMISSION-COVER - CREEPER GEAR	128
16 SPEED TRANSMISSION-COVER - CREEPER GEAR - REAR COVER	130
16 SPEED TRANSMISSION-COVER - GAMMA 2 CLUTCH AND REDUCER	132
16 SPEED TRANSMISSION-COVER - GAMMA 2 INPUT SHAFT- WITHOUT SYNCHRO-MESH	134
TRANSMISSION - GAMMA 2 GEAR TRAIN	138
TRANSMISSION - MAIN SHAFT AND DUTPUT SHAFT	140
TRANSMISSION	142
TRANSMISSION - MARK II- OUTPUT SHAFT- ASSEMBLING	144
TRANSMISSION-COUNTERSHAFT - MARK II	146
TRANSMISSION-MAIN SHAFT - MARK II- GEAR TRAIN	148
16 SPEED TRANSMISSION-INTERNAL CONTROL	150
TRANSMISSION-SHIFT CONTROL	152
TRACTION GEARCHANGE CONTROLS	154
TRANSMISSION - CONTROL VANE GAMMA 2- 2 WHEEL DRIVE	156
PTO-DRIVE MECHANISM-TWO SPEED	157A
PTO-DRIVE MECHANISM-TWO SPEED - SHAFT	160
PTO-CONTROL	162
IPTO-CLUTCH AND VALVES	164
REAR AXLE CENTRE HOUSING	166
REAR AXLE-DIFFERENTIAL - WITH LOCK MECHANICAL- UP TO SERIAL K 125204	168
REAR AXLE-DIFFERENTIAL - WITH LOCK MECHANICAL- UP TO SERIAL K 125204	170
REAR AXLE-DIFFERENTIAL LOCK MECHANISM - 2 WHEEL DRIVE- UP TO SERIAL NO K131201	172
REAR AXLE-DIFFERENTIAL LOCK MECHANISM - 4 WHEEL DRIVE- UP TO SERIAL K 131201	174
REAR AXLE-DIFFERENTIAL LOCK MECHANISM - 4 WHEEL DRIVE- UP TO SERIAL K 131201	176
REAR AXLE-DIFFERENTIAL LOCK MECHANISM - 4 WHEEL DRIVE- UP TO SERIAL K 131201	178
REAR AXLE-DIFFERENTIAL - WITH LOCK MECHANISM HYDROMECHANICAL- FROM SERIAL N O K 125205	180
REAR AXLE-DIFFERENTIAL LOCK MECHANISM - HYDROMECHANICAL- FROM SERIAL NO K 125205	182
REAR AXLE-DIFFERENTIAL LOCK MECHANISM - HIDRAULIC CONTROL- FROM SERIAL K 131202	184
REAR AXLE-DIFFERENTIAL LOCK MECHANISM	185A
REAR AXLE-HOUSING - NORMAL DUTY	186
HYDRAULIC BRAKE CONTROL - PEDALS	188
HYDRAULIC BRAKE CONTROL - WITH TRAILER BRAKING WITHOUT COMPENSATING- FROM TO SERIAL NO T 129216	190
HYDRAULIC BRAKE CONTROL - WITHOUT TRAILER BRAKING WITHOUT COMPENSATING- UP T O SERIAL NO T 129215	192
HYDRAULIC BRAKE CONTROL - WITHOUT TRAILER BRAKING WITHOUT COMPENSATING- FROM SERIAL NO T 129216	194
HYDRAULIC BRAKE CONTROL - WITHOUT TRAILER BRAKING WITH COMPENSATING- UP TO S ERIAL NO T 219215	196
HYDRAULIC BRAKE CONTROL - WITHOUT TRAILER BRAKING WITH COMPENSATING- FROM SE RIAL NO T 129216	198
HYDRAULIC BRAKE CONTROL-PIPING - WITH TRAILER BRAKING WITHOUT COMPENSATING- UP TO S ERIAL NO T 129215	200

HANDBRAKE - TOP CONTROL	202
HANDBRAKE - BOTTOM CONTROL	204
REAR WHEELS	206
REAR WHEELS	208
FRONT WHEELS	210
FRONT WHEELS-4 WHEEL DRIVE	212
FRONT WHEELS-4 WHEEL DRIVE	214
WHEELS - WEIGHT	216
AXLE SUPPORT - VENTRAL WEIGHT	218
AXLE SUPPORT - 2 WHEEL DRIVE	220
AXLE SUPPORT - 2 WHEEL DRIVE	222
FRONT AXLE-2 WHEEL DRIVE	224
STEERING - STEERING WHEEL- GEMMER UP TO SERIAL K 204202	226
HYDROSTATIC- STEERING - GEMMER- UP TO SERIAL K 204202	228
STEERING UNIT-GEMMER - LOW PRESSURE- UP TO SERIAL J 254203	230
STEERING UNIT-GEMMER - HIGH PRESSURE- UP TO SERIAL K 204202	232
STEERING - STEERING WHEEL- DANFOSS FROM SERIAL K 204203	234
HYDROSTATIC- STEERING - DANFOSS- FROM SERIAL K 204203	236
HYDROSTATIC- STEERING - DANFOSS FROM TO SERIAL NO K 204203- CONTINUATION	238
HYDROSTATIC- STEERING - LINES ASSEMBLING	240
STEERING UNIT-ORBITROL DANFOSS - DANFOSS- FROM SERIAL K 204203	242
HYDROSTATIC STEERING-2 WHEEL DRIVE - BOTTOM LINES	244
HYDROSTATIC- STEERING-4 WHEEL DRIVE - BOTTOM LINES	246
STEERING CYLINDER-2 WHEEL DRIVE	248
STEERING CYLINDER-4 WHEEL DRIVE	250
HYDRAULIC PUMP-COVER - WITH GEMMER STEERING UP TO SERIAL K 204202- RIGHT SIDE	252
HYDRAULIC PUMP-COVER - WITH DANFOSS STEERING FROM SERIAL K 204203- RIGHT SIDE	256
HYDRAULIC PUMP-COVER - DANFOSS STEERING FROM TO SERIAL NO.K 204203- WITHO UT TRAILER BRAKING	258
HYDRAULIC PUMP-COVER - DANFOSS STEERING FROM TO SERIAL NO K 204203- WITH TRAILER BRAKING	260
HYDRAULIC PUMP	262
HYDRAULIC PUMP-COVER - RIGHT SIDE OUT	264
REAR AXLE-DIFFERENTIAL LOCK MECHANISM - VALVE	266
REAR AXLE-DIFFERENTIAL LOCK MECHANISM - WITHOUT DIFFERENTIAL LOCK	268
HYDRAULIC- VALVE- 2 WHEEL DRIVE	
TRAILER BRAKE VALVE	270
HYDRAULIC VALVE - UP TO SERIAL B155217	272
HYDRAULIC VALVE - DANFOSS- FROM SERIAL K 204203	274
OUTSIDE FILTER - INSTALLATION	276
OUTSIDE FILTER	278
OUTSIDE FILTER	280
HYDRAULIC VALVE	282
AUXILIARY HYDRAULICS - TOP CONTROL	284
AUXILIARY HYDRAULICS - BOTTOM CONTROL	286
AUXILIARY HYDRAULICS - DISTRIBUTOR COVER	288
DISTRIBUTOR	290
AUXILIARY HYDRAULICS - DISTRIBUTOR COVER	291A
HOSES AND COUPLINGS	292
CONNECTOR ASSEMBLY KIT	294
OIL COOLER - FRONT PIPES	296
OIL COOLER - REAR PIPES	298
HYDRAULIC LIFT COVER	300

TABLE OF CONTENT

HYDRAULIC LIFT COVER - CONTROL COVER	302
AUXILIARY HYDRAULIC VALVES	304
HYDRAULIC LIFT ARRANGEMENT	306
DRAFT AND POSITION CONTROLS	308
DRAFT AND POSITION CONTROLS - ARMS AND LEVERS	310
TOP LINKS	312
TOP LINKS - LIFT- CYLINDER	314
HYDRAULIC LIFT CYLINDER	316
LOWER LINKS - WITH BALL	318
LOWER LINKS - WITH BALL	320
LOWER LINKS - HOOK	322
LOWER LINKS - HOOK	324
TOP LINKS	326
LOWER LINKS - AUTOMATIC HOOK	328
LOWER LINKS	329A
STABILIZERS	330
UPPER AND LOWER LINKS - BALL	332
SWINGING DRAWBAR	334
SWINGING DRAWBAR	336
SWINGING DRAWBAR	338
PTO-CONTROL - GUARD	340
HITCH - BRACKETS AND GUARDS	341A
HITCH-LEMOINE	342
HITCH-CRAMER	343A
FRONT HITCH - WITHOUT WEIGHTS	344
FRONT HITCH - WITH WEIGHTS	346
SHEET METAL-GRILLE	352
SHEET METAL-GRILLE	354
SHEET METAL-HOOD	356
FENDER EXTENSION - GERMANY	358
SHEET METAL - MISCELLANEOUS	360
SHEET METAL - MISCELLANEOUS	362
SHEET METAL - MUDGUARD- 2 WHEELS DRIVE	364
SHEET METAL - MUDGUARD- 4 WHEELS DRIVE	366
TRACTOR CAB	368
SHEET METAL - PLATFORM WITH PILLARS	370
TRACTOR CAB-CAB MOUNTINGS AND STEP / STAIRS	372
FOOTSTEP	374
TRACTOR CAB-CAB MISCELLANEOUS - MIRROR	376
TRACTOR CAB-RADIO INSTALLATION	378
TRACTOR CAB - CAB 2 DOORS WITH TRAP	380
TRACTOR CAB - WINDSCREEN	382
TRACTOR CAB-CAB DOOR - LEFT GATE- WITH SLIDING WINDOW	384
TRACTOR CAB-CAB DOOR - LEFT HANDLE	386
TRACTOR CAB-CAB DOOR - RIGHT GATE WITH SLIDING GLASS	388
TRACTOR CAB-CAB DOOR - RIGHT HANDLE	390
TRACTOR CAB-CAB DOOR - MISCELLANEOUS	392
TRACTOR CAB-CAB MISCELLANEOUS	394
TRACTOR CAB-WINDOWS - CAB 1 DOOR- RIGHT WINDOW	396
TRACTOR CAB-WINDOWS	398
TRACTOR CAB-WINDOWS - REAR WINDOW	400
WINDSCREEN WIPER	402
WINDSCREEN WIPER - REAR- WINDSCREEN WIPER- AND- VASHER	404
WINDSCREEN WASHER	406

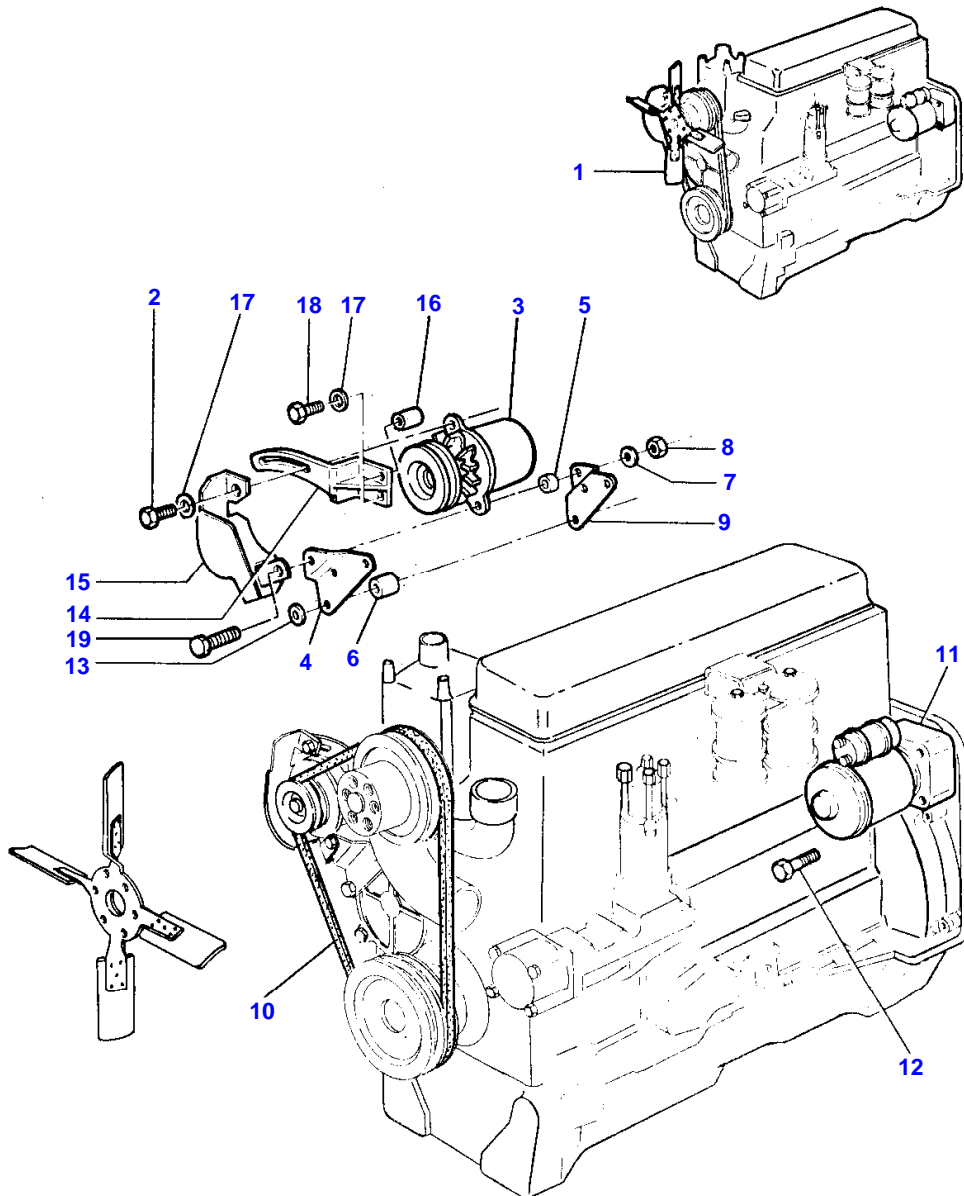
TABLE OF CONTENT

WINDSCREEN WASHER - ELECTRICAL- FROM TO SERIAL NO T 245212	407A
WINDSCREEN WASHER - ELECTRICAL DRIVE- FROM TO SERIAL NO T 245212	407C
SEAT-SABLE - WITH CAB- FROM- SERIAL J2812	408
SEAT-SABLE - WITH PLATFORM	410
SEAT-SABLE - WITH PLATFORM	412
SECONDARY SEAT	414
TRACTOR CAB-CAB INSULATION	416
TRACTOR CAB-CAB HEATER - HEATER	418
TRACTOR CAB-VENTILATION	420
TRACTOR CAB-CAB LIGHTING - UP TO SERIAL NO T 223217	422
TRACTOR CAB-CAB LIGHTING - FROM TO SERIAL NO.T 223218	423A
TRACTOR CAB-ROOF EQUIPMENT	424
TRACTOR CAB-ROOF EQUIPMENT - WITH TRAP	426
TRACTOR CAB-ROOF EQUIPMENT	428
SHEET METAL-INSTRUMENT PANEL	430
TRACTOR CAB-CAB MISCELLANEOUS - WITHOUT MIRROR- WITHOUT FOG LIGHT	432
SHEET METAL-INSTRUMENT PANEL - SPEEDOMETER	434
SHEET METAL-INSTRUMENT PANEL	436
SHEET METAL-PANEL WIRING - RELAY- WORKING LIGHT	438
CIGAR LIGHTER AND ASHTRAY	440
SHEET METAL-PANEL WIRING - RELAY PRESSURE VALVE	442
TRACTOR CAB - CONTROL BOX AUTOTRONIC	444
WIRING - ENGINE WITHOUT ETHER STARTING- PLATFORM	446
WIRING - ENGINE WITHOUT ETHER STARTING	448
WIRING - ENGINE EQUIPMENT WITH ETHER	450
WIRING - INSTRUMENT PANEL WITHOUT ETHER STARTING- PLATFORM	452
WIRING - INSTRUMENT PANEL WITHOUT ETHER STARTING- WITH CAB	454
WIRING - INSTRUMENT PANEL EQUIPMENT WITH ETHER- WITH CAB	455A
SHEET METAL-PANEL WIRING - CONTINUED	458
WIRING - LIGHTING	460
FRONT LIGHTING EQUIPMENT	462
FRONT LIGHTING EQUIPMENT	464
REAR LIGHTING EQUIPMENT	466
REAR LIGHTING EQUIPMENT - LICENSE PLATE	470
REAR LIGHTING EQUIPMENT	472
LIGHTING KITS - 1 REAR WORK LIGHT	474
LIGHTING KITS - 2 REAR WORK LIGHT	476
LIGHTING KITS - 4 WORK LIGHT	478
LIGHTING KITS - DANGER PANEL	480
LIGHTING KITS - LAMPS : SILVER GRAY .	481A
LIGHTING KITS - LAMPS : SILVER GRAY .	481C
LIGHTING KITS - LAMPS : SILVER GRAY .	481E
FRONT AXLE HYDRAULIC CONTROL - CONTROL VANE GAMMA 2 - 4 WHEEL DRIVE	482
HYDRAULIC SELECTOR VALVE KIT - FRONT AXLE CONTROL- CREEPER GEAR CONTROL	484
HYDRAULIC SELECTOR VALVE KIT - FRONT AXLE CONTROL- CREEPER GEAR CONTROL	486
TRANSFER GEAR BOX	488
FRONT LIVE AXLE - AXLE SUPPORT- 4 WHEEL DRIVE	490
FRONT LIVE AXLE - SUPPORT	492
GUARD AND TRANSMISSION SHAFT	494
FRONT LIVE AXLE - UP TO SERIAL NO T 270201- WITH 1 CYLINDER	496
FRONT LIVE AXLE - FROM TO SERIAL T 270202- WITH 1 CYLINDER	497A
FRONT AXLE HOUSING-4 WHEEL DRIVE - WITH 1 CYLINDER	498
FRONT AXLE HOUSING-4 WHEEL DRIVE - WITH 1 CYLINDER	499A

TABLE OF CONTENT

00

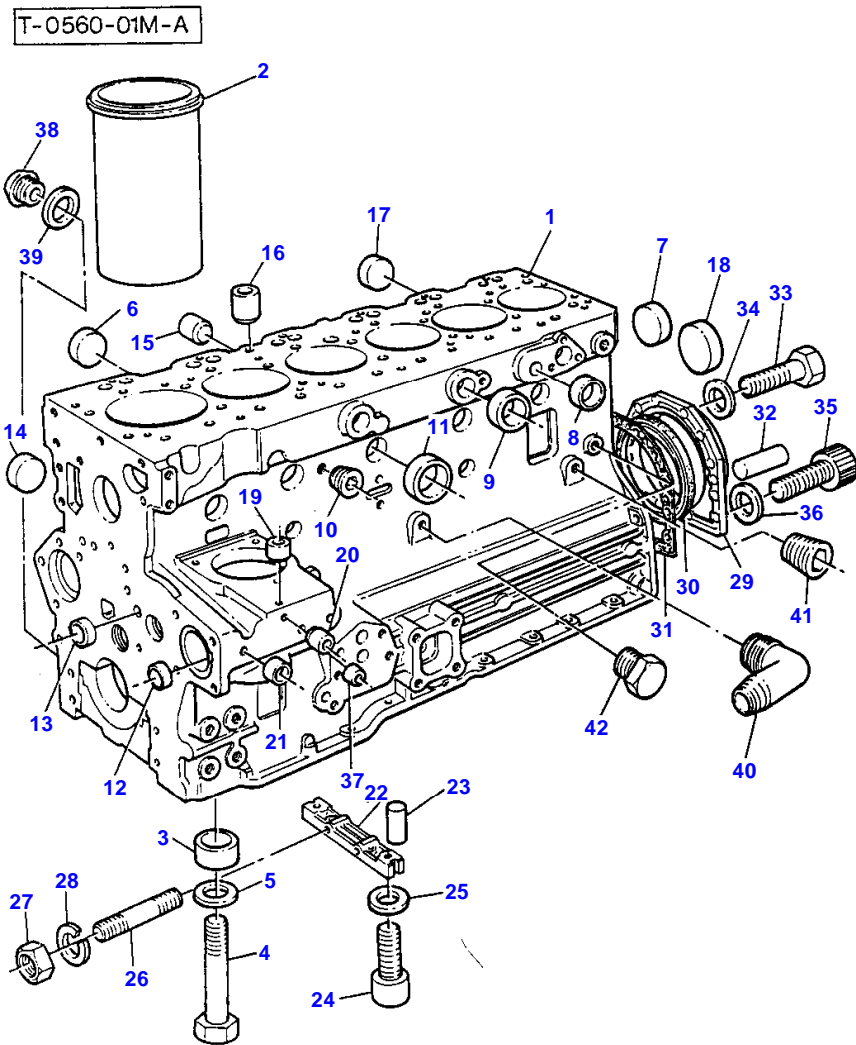
FRONT AXLE-DIFFERENTIAL-4 WHEEL DRIVE - HOUSING- WITH FRONT AXLE 1 CYLINDER	500
FRONT AXLE-DIFFERENTIAL-4 WHEEL DRIVE - GEAR 10 X 39	502
FRONT AXLE FINAL DRIVE-4 WHEEL DRIVE - WITH 1 CYLINDER	504
FRONT AXLE FINAL DRIVE-4 WHEEL DRIVE - WITH 1 CYLINDER	505A
SPEED CHARTS	506
TRANSFERS	508
TRANSFERS	510



1-0010-056

MASSEY FERGUSON**MF 2620 TRACTOR, |-> 271213 - 1637119****1637119****ENGINE AND ACCESSORIES****2**

Item	Part Number	Qty	Description	Comments
1	3052227M91	1	Engine	
2	353679X1	1	Screw Unc	
3		1	Alternator	See Page - Reference Number 68/1
4	3040961M1	1	Support	
5	3040964M2	1	Spacer	
6	3040962M1	3	Spacer	
7	339376X1	1	Lock Washer	
8	339402X1	1	Nut Metric	
9	3040963M1	1	Bearer	
10	3052209M1	1	Belt	
11		1	Startermotor	See Page - Reference Number 72/1
12	353693X1	3	Screw Unc	
13	353755X1	3	Washer	
14	3040944M92	1	Tensioner	
15	3042320M91	1	Cowl	
16	3040965M1	2	Spacer	
17	353446X1	3	Lock Washer	
18	353525X1	2	Bolt Unf	
19	339679X1	1	Bolt Metric	



MASSEY FERGUSON

MF 2620 TRACTOR, |-> 271213 - 1637119

1637119

CYLINDER BLOCK - A6.354.4 ENGINE

4

Item	Part Number	Qty	Description	Comments
				A6.354.4 ENGINE
1	ZZ 50041	1	Kit,Cyl.Block	Repairs and replaces M7BA0441
2	31358393	6	Liner	Repairs and replaces 63621 (1) (A)
2	31358394	X	Liner	(B)
3	33142111	14	Thimble	(1)
4	32166329	14	Bolt	(1)
5		14	Washer	(D)
6	32418117	6	Plug	(1) Repairs and replaces 0650618
7	32418117	2	Plug	(1) Repairs and replaces 0650618
8	0650692	1	Plug	(1) Repairs and replaces 0650664
9	0650710	4	Plug	(1)
10	2431A054	1	Plug	(1) Repairs and replaces 0650586
11	32416116	5	Plug	(1) Repairs and replaces 32417155 Repairs and replaces 32418121
12	32417115	1	Plug	
13	0650566	2	Plug	
14	0650710	1	Plug	
15	32417133	1	Plug	
16	32417134	1	Plug	
17	32418117	6	Plug	Repairs and replaces 0650618
18	32416105	1	Plug	From Serial or Engine Number U653770H
19	32417134	1	Plug	From Serial or Engine Number U653770H
20	32417134	1	Plug	From Serial or Engine Number U653770H
21	32417121	2	Plug	
22	3627P011	1	Bridge Piece	Repairs and replaces 36277825 Repairs and replaces 36277833 (C)
23	32811408	2	Joint	
24	2172514	2	Screw	Repairs and replaces 2176369
25	0920521	2	Washer	(C)
26	0826201	2	Stud	
27	0576002	2	Nut	
28	0920053	2	Washer	
29	4142V064	1	Housing	Repairs and replaces 4142V061 Repairs and replaces 4142V031 Repairs and replaces 37513851 (29) Repairs and replaces 2415391
30	2418F475	1	Seal	
31	36817157	1	Joint	
32	0350009	2	Dowel	
33	0746211	10	Bolt	
34	0920003	10	Washer	
35	2172530	2	Capscrew	
36	33112111	2	Washer	From Serial or Engine Number U652770H
37	32417143	1	Plug	From Serial or Engine Number U653770H
38	32168232	4	Plug	Repairs and replaces 32168231
39	2411157	4	Washer	
40	0201568	1	Connection	
41	2431131	1	Plug	
42	32161114	2	Plug	From Serial or Engine Number U653770H Repairs and replaces 32161357 (A) PRESS FIT (B) SLIP FIT (C) USED ONLY WITH 36277831/36277833. NOT REQUIRED WITH 36277825/3627P011.

MASSEY FERGUSON

MF 2620 TRACTOR, |-> 271213 - 1637119

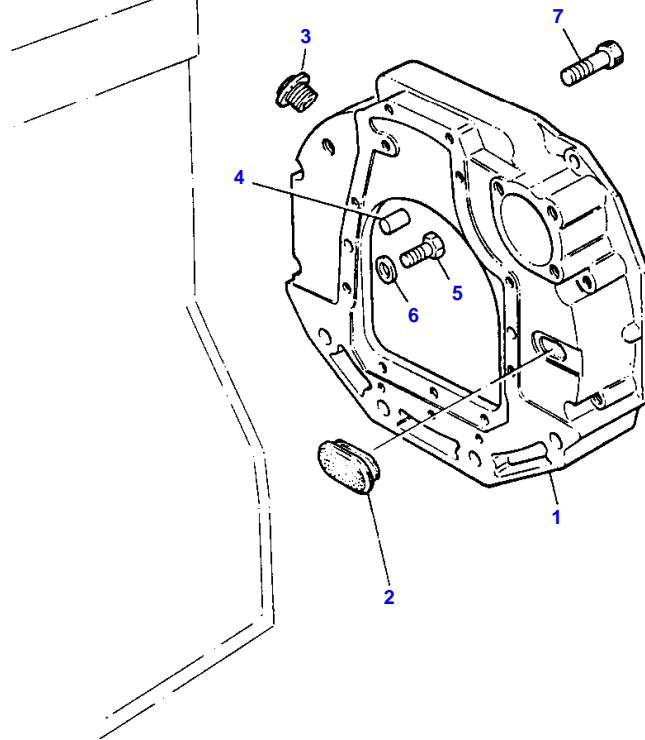
1637119

CYLINDER BLOCK - A6.354.4 ENGINE

4

Item	Part Number	Qty	Description	Comments
				(D) NO LONGER REQUIRED ON THIS APPLICATION

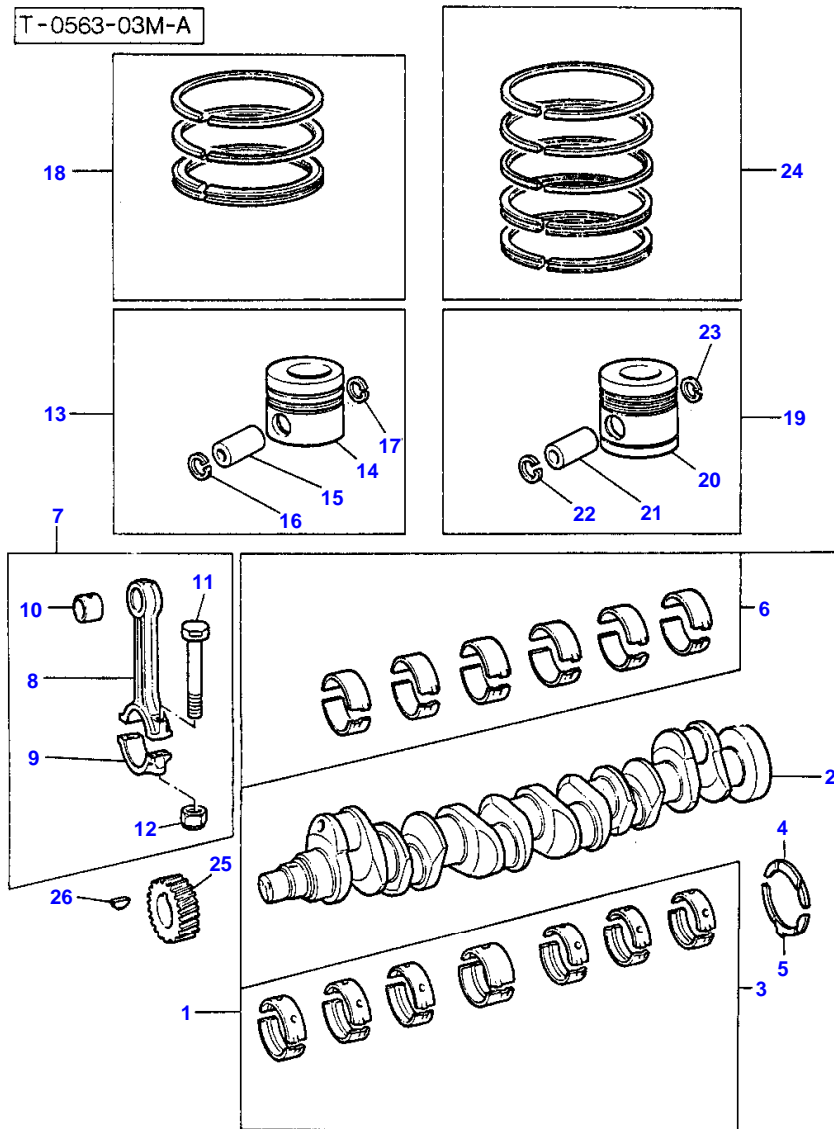
T-0596-01M-B



MASSEY FERGUSON**MF 2620 TRACTOR, |-> 271213 - 1637119****1637119****FLYWHEEL HOUSING - A6.354.4 ENGINE****8**

Item	Part Number	Qty	Description	Comments
				A6.354.4 ENGINE
1	37148191	1	Plate	Up to Serial or Engine Number U739319M
	37148192	1	Plate	Repairs and replaces U739320M
2	37813113	1	Plug	
3	32186404	1	Plug	Up to Serial or Engine Number U739319M
4	32455119	2	Dowel	
5	0746462	6	Bolt	
6	33115129	6	Washer	
7	2222157	2	Screw	

T-0563-03M-A



Buy Now



Our support email:

ebooklibonline@outlook.com