

Page Title	Page Number
ENGINE AND ACCESSORIES - UP TO SERIAL NO	2
ENGINE AND ACCESSORIES - BELT- PULLEY- UP TO SERIAL NO	4
ENGINE AND ACCESSORIES - FROM TO SERIAL NO	6
CYLINDER BLOCK - A6.354.4 ENGINE	10
FLYWHEEL HOUSING - A6.354.4 ENGINE	14
CRANKSHAFT, PISTONS AND CONNECTING RODS - A6.354.4 ENGINE	16
CYLINDER HEAD - A6.354.4 ENGINE	20
ROCKER SHAFT - A6.354.4 ENGINE	22
INDUCTION MANIFOLD - A6.354.4 ENGINE	26
EXHAUST MANIFOLD - A6.354.4 ENGINE	28
ENGINE LIFTING - A6.354.4 ENGINE	30
TIMING GEAR AND CAMSHAFT - A6.354.4 ENGINE	32
FRONT END DRIVE INPUT AND OUTPUT - A6.354.4 ENGINE	36
AUXILIARY DRIVE - A6.354.4 ENGINE	38
LUBRICATING OIL PUMP AND DELIVERY HOUSING - A6.354.4 ENGINE	40
LUBRICATING OIL SUMP - A6.354.4 ENGINE	42
LUBRICATING OIL FILLER AND BREATHER - A6.354.4 ENGINE	44
LUBRICATING OIL FILTER AND INTEGRAL COOLER - A6.354.4 ENGINE	46
WATER PUMP, THERMOSTAT AND HEAT EXCHANGER - A6.354.4 ENGINE	50
WATER OUTLET AND INLET - A6.354.4 ENGINE	54
FAN AND EXTENSION - A6.354.4 ENGINE	56
GEAR DRIVE AUXILIARY DRIVE OPTIONS - A6.354.4 ENGINE	58
FUEL INJECTION EQUIPMENT (DIESEL) - A6.354.4 ENGINE	60
LOW PRESSURE FUEL SYSTEM - A6.354.4 ENGINE	64
JOINTS AND GASKETS-TOP SERVICE KIT - A6.354.4 ENGINE	70
JOINTS AND GASKETS-BOTTOM SERVICE KIT - A6.354.4 ENGINE	72
BATTERY	74
TOOL BOX BATTERY BOX	76
ENGINE AND ACCESSORIES - TENSIONER- UP TO SERIAL S 133202	78
ENGINE AND ACCESSORIES - TENSIONER- FROM TO SERIAL NO S 133203- UP TO SERIAL NO	80
ALTERNATOR-MOTOROLA - WITH CAB	82
ALTERNATOR-MOTOROLA - TRACTOR WITH PLATFORM	84
ALTERNATOR-MOTOROLA	86
STARTER-LUCAS	88
COOLING SYSTEM - AIR CONDITIONER- UP TO SERIAL K 125209	90
COOLING SYSTEM - AIR CONDITIONER- FROM SERIAL NO K 125210	92
COOLING SYSTEM - COMPRESSOR GENERAL MOTORS- UP TO SERIAL NO L 17820	94
2	
RADIATOR - ASSEMBLING	96
RADIATOR - FEEDING	98
FUEL TANK AND ATTACHMENTS	100
FUEL TANK AND ATTACHMENTS - FUEL TUBE	102
AIR FILTER - EQUIPMENT	104
AIR FILTER - EQUIPMENT	106
AIR FILTER - EQUIPMENT- WITH- ETHER	108
AIR FILTER - LAUTRETTE- UP TO SERIAL NO T 207204	110
AIR PRE FILTER	112
EXHAUST SYSTEM - WITHOUT- ASPIRATOR	114
EXHAUST SYSTEM - UNITED STATES	116
EXHAUST SYSTEM	118
THROTTLE CONTROLS - HAND THROTTLE	120
THROTTLE CONTROLS - FOOTTHROTTLE.OLD MOUNTING	122

TABLE OF CONTENT

THROTTLE CONTROLS - INJECTION PUMP BEADCORE	124
FRONT SPACER	126
CLUTCH	128
CLUTCH PEDAL AND LINKAGE - PEDAL	130
CLUTCH PEDAL AND LINKAGE - MASTER CYLINDER	132
MASTER CYLINDER	134
TRANSMISSION	136
TRANSMISSION-HOUSING - UP TO SERIAL NB K 204204	138
TRANSMISSION-HOUSING - FROM SERIAL NB K204205	140
TRANSMISSION - UP TO SERIAL NO S 268000	144
16 SPEED TRANSMISSION-COVER	146
16 SPEED TRANSMISSION-COVER - POWER TAKE OFF SHAFT- UP TO SERIAL NO K 223205	148
16 SPEED TRANSMISSION-COVER - POWER TAKE OFF SHAFT- FROM TO SERIAL NO K 223206	150
16 SPEED TRANSMISSION-COVER - GAMMA 2 CLUTCH SHAFT	152
16 SPEED TRANSMISSION-COVER - GAMMA 2 COVER	154
16 SPEED TRANSMISSION-COVER - CREEPER GEAR - FRONT COVER	156
16 SPEED TRANSMISSION-COVER - CREEPER GEAR	158
16 SPEED TRANSMISSION-COVER - CREEPER GEAR - REAR COVER	160
16 SPEED TRANSMISSION-COVER - GAMMA 2 CLUTCH AND REDUCER	162
16 SPEED TRANSMISSION-COVER - GAMMA 2 INPUT SHAFT- WITHOUT SYNCHRO-MESH	164
16 SPEED TRANSMISSION-COVER - GAMMA 2 INPUT SHAFT- WITH SYNCHRO-MESH	168
TRANSMISSION - GAMMA 2 GEAR TRAIN	170
TRANSMISSION - MAIN SHAFT AND DUTPUT SHAFT	172
TRANSMISSION	174
TRANSMISSION - MARK II- OUTPUT SHAFT- ASSEMBLING	176
TRANSMISSION-COUNTERSHAFT - MARK II	178
TRANSMISSION-MAIN SHAFT - MARK II- GEAR TRAIN	180
16 SPEED TRANSMISSION-INTERNAL CONTROL	182
TRANSMISSION-SHIFT CONTROL	184
TRACTION GEARCHANGE CONTROLS	186
TRANSMISSION - CONTROL VANE GAMMA 2- 2 WHEEL DRIVE	188
PTO-DRIVE MECHANISM-TWO SPEED	190
PTO-DRIVE MECHANISM-TWO SPEED - SHAFT	192
PTO-CONTROL	194
IPTO-CLUTCH AND VALVES	196
IPTO-CLUTCH AND VALVES - UNITED STATES- UP TO SERIAL NO- K 223205	198
IPTO-CLUTCH AND VALVES - UNITED STATES- FROM SERIAL NO- K 223206	200
REAR AXLE CENTRE HOUSING	202
REAR AXLE CENTRE HOUSING - UNITED STATES	204
REAR AXLE-DIFFERENTIAL - WITH HYDRAULIC LOCK- UP TO SERIAL NO K 125204	206
REAR AXLE-DIFFERENTIAL - WITH HYDRAULIC LOCK- UP TO SERIAL NO K 125204	208
REAR AXLE-DIFFERENTIAL - WITH LOCK MECHANICAL 2 WHELL DRIVE- UP TO SERIAL K 125204	210
REAR AXLE-DIFFERENTIAL LOCK MECHANISM - HIDRAULIC CONTROL- UP TO SERIAL K 131201	212
REAR AXLE-DIFFERENTIAL - WITH LOCK MECHANICAL 2 WHELL DRIVE- UP TO SERIAL K 125204	214
REAR AXLE-DIFFERENTIAL LOCK MECHANISM - 2 WHEEL DRIVE- UP TO SERIAL NO K131201	216
REAR AXLE-DIFFERENTIAL - WITH LOCK MECHANISM HYDROMECHANICAL- FROM SERIAL N O K 125205	218
REAR AXLE-DIFFERENTIAL LOCK MECHANISM - HYDROMECHANICAL- FROM SERIAL NO K 125205	222

TABLE OF CONTENT

REAR AXLE-DIFFERENTIAL LOCK MECHANISM - HIDRAULIC CONTROL- FROM SERIAL K 131202	224
REAR AXLE-DIFFERENTIAL LOCK MECHANISM	226
REAR AXLE-HOUSING - NORMAL DUTY	228
REAR AXLE-HOUSING - HEAVY DUTY	230
HYDRAULIC BRAKE CONTROL - PEDALS	232
HYDRAULIC BRAKE CONTROL - WITH TRAILER BRAKING WITHOUT COMPENSATING- FROM SERIAL NO T 129216	234
HYDRAULIC BRAKE CONTROL - WITHOUT TRAILER BRAKING WITHOUT COMPENSATING- UP T O SERIAL NO T 129215	236
HYDRAULIC BRAKE CONTROL - WITHOUT TRAILER BRAKING WITHOUT COMPENSATING- FROM SERIAL NO T 129216	238
HYDRAULIC BRAKE CONTROL - WITHOUT TRAILER BRAKING WITH COMPENSATING- UP TO S ERIAL NO T 219215	240
HYDRAULIC BRAKE CONTROL - WITHOUT TRAILER BRAKING WITH COMPENSATING- FROM SE RIAL NO T 129216	242
HYDRAULIC BRAKE CONTROL-PIPING - WITH TRAILER BRAKING WITHOUT COMPENSATING- UP TO S ERIAL NO T 129215	244
HANDBRAKE - TOP CONTROL	246
HANDBRAKE - BOTTOM CONTROL	248
REAR WHEELS	250
REAR WHEELS	252
REAR WHEELS - FOR AMERICAS REGION- FIXING BY BRIDLE	254
REAR WHEELS	256
REAR WHEELS - FOR U.S.A.- FIXING BY CONE	258
REAR WHEELS-4 WHEEL DRIVE	260
FRONT WHEELS	262
FRONT WHEELS-2 WHEEL DRIVE - U.S.A	264
FRONT WHEELS-4 WHEEL DRIVE	266
FRONT WHEELS-4 WHEEL DRIVE	268
FRONT WHEELS-4 WHEEL DRIVE - UNITED STATES	270
FRONT WHEELS-4 WHEEL DRIVE - VARIABLE- THREADS- WHEEL	272
WHEELS - WEIGHT	274
AXLE SUPPORT - VENTRAL WEIGHT	276
AXLE SUPPORT - 2 WHEEL DRIVE	278
AXLE SUPPORT - 2 WHEEL DRIVE	280
FRONT AXLE-2 WHEEL DRIVE	282
FRONT AXLE-2 WHEEL DRIVE - UNITED STATES	284
STEERING - STEERING WHEEL- GEMMER UP TO SERIAL K 204202	288
STEERING - GEMMER UP TO SERIAL K 204202- TELESCOPIC STEERING WHEEL	290
STEERING - TELESCOPIC STEERING LOCKING- GEMMER UP TO SERIAL K 204202	294
STEERING - STEERING WHEEL- DANFOSS FROM SERIAL K 204203	296
STEERING - DANFOSS FROM TO SERIAL NO K 204203- TELESCOPIC STE ERING WHEEL	298
STEERING - TELESCOPIC STEERING LOCKING- DANFOSS FROM SERIAL K 204203	300
HYDROSTATIC- STEERING - GEMMER- UP TO SERIAL K 204202	302
HYDROSTATIC- STEERING - DANFOSS- FROM SERIAL K 204203	304
HYDROSTATIC- STEERING - DANFOSS FROM TO SERIAL NO K 204203- CONTINUATION	306
STEERING UNIT-ORBITROL DANFOSS - DANFOSS- FROM SERIAL K 204203	308
HYDROSTATIC- STEERING - EXHAUSTER	310
HYDROSTATIC STEERING-2 WHEEL DRIVE - BOTTOM LINES	312
HYDROSTATIC- STEERING-4 WHEEL DRIVE - BOTTOM LINES	314
HYDROSTATIC- STEERING-4 WHEEL DRIVE - BOTTOM LINES- HEAVY DUTY FRONT AXLE	316
STEERING UNIT-GEMMER - HIGH PRESSURE- UP TO SERIAL K 204202	318
STEERING UNIT-GEMMER - LOW PRESSURE- UP TO SERIAL J 254203	320
STEERING UNIT-GEMMER - LOW PRESSURE- UP TO SERIAL J 254203	322

TABLE OF CONTENT

STEERING CYLINDER-2 WHEEL DRIVE	322
STEERING CYLINDER-2 WHEEL DRIVE - WITH INTEGRATED STOP	324
STEERING CYLINDER-4 WHEEL DRIVE	326
STEERING CYLINDER-4 WHEEL DRIVE - HEAVY DUTY	328
HYDRAULIC PUMP-COVER - WITH GEMMER STEERING UP TO SERIAL K 204202- RIGHT SIDE	330
HYDRAULIC PUMP-COVER - WITH DANFOSS STEERING FROM SERIAL K 204203- RIGHT SIDE	334
HYDRAULIC PUMP-COVER - DANFOSS STEERING FROM TO SERIAL NO.K 204203- WITHO UT TRAILER BRAKING	336
HYDRAULIC PUMP-COVER - DANFOSS STEERING FROM TO SERIAL NO K 204203- WITH TRAILER BRAKING	338
HYDRAULIC PUMP-COVER - LEFT SIDE INSIDE- UNITED STATES	340
HYDRAULIC PUMP	342
HYDRAULIC PUMP - UNITED STATES	344
HYDRAULIC PUMP-COVER - RIGHT SIDE OUT	346
HYDRAULIC PUMP-COVER - LEFT SIDE OUT- UNITED STATES	348
REAR AXLE-DIFFERENTIAL LOCK MECHANISM - VALVE	350
REAR AXLE-DIFFERENTIAL LOCK MECHANISM - WITHOUT DIFFERENTIAL LOCK	352
HYDRAULIC- VALVE- 2 WHEEL DRIVE	
TRAILER BRAKE VALVE	354
HYDRAULIC VALVE - UP TO SERIAL B155217	356
HYDRAULIC VALVE - DANFOSS- FROM SERIAL K 204203	358
OUTSIDE FILTER - INSTALLATION	360
OUTSIDE FILTER - UPPER PARTS- UNITED STATES	362
OUTSIDE FILTER	364
OUTSIDE FILTER - LOWER PARTS- UNITED STATES	366
OUTSIDE FILTER	368
HYDRAULIC VALVE	370
AUXILIARY HYDRAULICS - TOP CONTROL	372
AUXILIARY HYDRAULICS - BOTTOM CONTROL	374
AUXILIARY HYDRAULICS - DISTRIBUTOR COVER	376
AUXILIARY HYDRAULICS - TOP CONTROL- UNITED STATES	378
AUXILIARY HYDRAULICS - BOTTOM CONTROL- UNITED STATES	380
DISTRIBUTOR	382
HOSES AND COUPLINGS	384
CONNECTOR ASSEMBLY KIT	386
HOSES AND COUPLINGS - UNITED STATES	388
OIL COOLER - FRONT PIPES	390
OIL COOLER - REAR PIPES	392
OIL COOLER	394
HYDRAULIC LIFT COVER	396
HYDRAULIC LIFT COVER - CONTROL COVER	398
AUXILIARY HYDRAULIC VALVES	400
HYDRAULIC LIFT ARRANGEMENT	402
DRAFT AND POSITION CONTROLS	404
DRAFT AND POSITION CONTROLS - ARMS AND LEVERS	406
TOP LINKS	408
TOP LINKS - LIFT- CYLINDER	410
HYDRAULIC LIFT CYLINDER - DIAMETER 79,2 MM	412
LOWER LINKS - WITH BALL	414
LOWER LINKS - TENSIONER	416
LOWER LINKS - WITH BALL	418
LOWER LINKS - HOOK	420
LOWER LINKS - HOOK- SAUERMANN	422
LOWER LINKS - HOOK	424



TABLE OF CONTENT

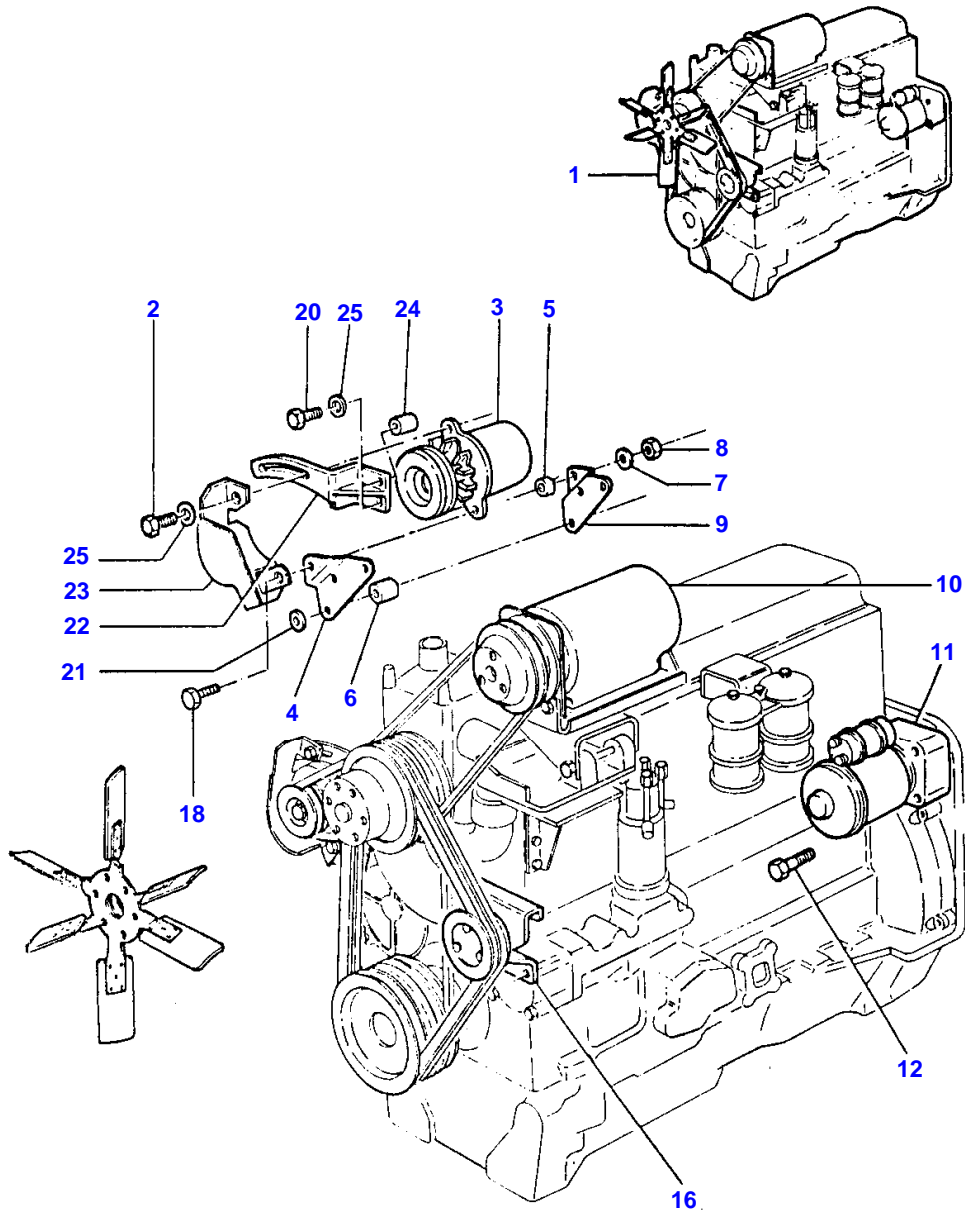
LOWER LINKS - WITH- HOOK- SAUERMAN- 4 WHEELS DRIVE	426
TOP LINKS	428
LOWER LINKS - AUTOMATIC HOOK	430
STABILIZERS - OUTSIDE	432
STABILIZERS	434
UPPER AND LOWER LINKS - BALL	436
SWINGING DRAWBAR	438
SWINGING DRAWBAR	440
SWINGING DRAWBAR	442
PTO-CONTROL - GUARD	444
HITCH-LEMOINE	446
ELECTRONIC LIFT-CONSOLE - UP TO SERIAL NO K 284208- K 240210 USA	448
ELECTRONIC LIFT-CONSOLE - FROM SERIAL K 284209- K 240211 USA	450
ELECTRONIC LIFT-CONSOLE PANEL - UP TO SERIAL NO K 284208- K 240210 USA	452
ELECTRONIC LIFT-MAIN HARNESS - UP TO SERIAL NO K 284208- K 240210 USA	454
ELECTRONIC LIFT-MAIN HARNESS - FROM SERIAL K 284209- K 240211 USA	456
ELECTRONIC LIFT-HYDRAULIC LIFT COVER - UP TO SERIAL NO K 284208- K 240210 USA	458
ELECTRONIC LIFT-HYDRAULIC LIFT COVER - FROM SERIAL K 284209- K 240211 USA	460
ELECTRONIC LIFT-DRAFT AND POSITION CONTROLS - DRAFT CONTROL- UP TO SERIAL NO K 284208 - K 240210 USA	462
ELECTRONIC LIFT-DRAFT AND POSITION CONTROLS - DRAFT CONTROL- FROM TO SERIAL NO K 284209 - K 2402 11 USA	464
ELECTRONIC LIFT-CYLINDERS - UP TO SERIAL NO K 284208- K 240210 USA	466
ELECTRONIC LIFT-CYLINDERS - FROM SERIAL K 284209- K 240211 USA	468
ELECTRONIC LIFT-HYDRAULIC VALVE - UP TO SERIAL NO K 284208- K 240210 USA	470
ELECTRONIC LIFT-HYDRAULIC VALVE - FROM SERIAL K 284209- K 240211 USA	472
ELECTRONIC LIFT-OIL COOLER-REAR PIPES - UP TO SERIAL NO K 284208- K 240210 USA	474
ELECTRONIC LIFT-OIL COOLER-REAR PIPES - FROM SERIAL K 284209- K 240211 USA	476
ELECTRONIC LIFT-OIL COOLER-REAR PIPES - FROM SERIAL K 240211- REAR PIPES- UNITED STATES	478
FRONT HITCH - WITHOUT WEIGHTS	480
FRONT HITCH - WITH WEIGHTS	482
HITCH-CRAMER	484
HITCH - BRACKETS AND GUARDS	486
SHEET METAL-GRILLE	488
SHEET METAL-GRILLE	490
SHEET METAL-HOOD	492
FENDER EXTENSION - GERMANY	496
SHEET METAL - MISCELLANEOUS	498
SHEET METAL - MISCELLANEOUS	500
SHEET METAL - MUDGUARD- 2 WHEELS DRIVE	502
SHEET METAL - MUDGUARD- 4 WHEELS DRIVE	504
TRACTOR CAB	506
SHEET METAL - PLATFORM WITH PILLARS	508
SHEET METAL - PLATFORM	510
TRACTOR CAB-CAB MOUNTINGS AND STEP / STAIRS	512
TRACTOR CAB-CAB MOUNTINGS AND STEP / STAIRS - WHEEL SHIM	514
FOOTSTEP	516
TRACTOR CAB-CAB MISCELLANEOUS - MIRROR	518
TRACTOR CAB-CAB MISCELLANEOUS - MIRROR- GERMANY	520
TRACTOR CAB-CAB MISCELLANEOUS - CANOPY-HEAD BEST	522
TRACTOR CAB-RADIO INSTALLATION	524

TABLE OF CONTENT

TRACTOR CAB RADIO INSTALLATION	527
TRACTOR CAB - CAB 2 DOORS WITH TRAP	526
TRACTOR CAB - WINDSCREEN	528
TRACTOR CAB-CAB DOOR - LEFT GATE	530
TRACTOR CAB-CAB DOOR - LEFT GATE- WITH SLIDING WINDOW	532
TRACTOR CAB-CAB DOOR - LEFT HANDLE	534
TRACTOR CAB-CAB DOOR - RIGHT GATE	536
TRACTOR CAB-CAB DOOR - RIGHT HANDLE	538
TRACTOR CAB-CAB DOOR - MISCELLANEOUS	540
TRACTOR CAB-CAB MISCELLANEOUS	542
TRACTOR CAB-WINDOWS - CAB 1 DOOR- RIGHT WINDOW	544
TRACTOR CAB-WINDOWS	546
TRACTOR CAB-WINDOWS - REAR WINDOW	548
WINDSCREEN WIPER	550
WINDSCREEN WIPER - REAR- WINDSCREEN WIPER- AND- VASHER	552
WINDSCREEN WASHER	554
SEAT-SABLE - WITH CAB- FROM- SERIAL J2812	556
SEAT-SABLE - WITH PLATFORM	558
SEAT-SABLE - WITH PLATFORM	560
SEAT-SABLE - UNITED STATES	562
SEAT-GRAMMER - 4 WHEEL- DRIVE- GERMANY	564
SECONDARY SEAT	566
TRACTOR CAB-CAB INSULATION	568
TRACTOR CAB-CAB HEATER - HEATER	570
TRACTOR CAB-CAB HEATER - HEATER- HEAT COUNTRY	572
TRACTOR CAB-VENTILATION	574
TRACTOR CAB-CAB LIGHTING - UP TO SERIAL NO T 223217	576
AIR CONDITIONER	578
AIR CONDITIONER - HIGH CAPACITY- HEAT COUNTRY	580
TRACTOR CAB-ROOF EQUIPMENT	582
TRACTOR CAB-ROOF EQUIPMENT - WITH TRAP	584
TRACTOR CAB-ROOF EQUIPMENT	586
SHEET METAL-INSTRUMENT PANEL	588
TRACTOR CAB-CAB MISCELLANEOUS - WITHOUT MIRROR- WITHOUT FOG LIGHT	590
SHEET METAL-INSTRUMENT PANEL - SPEEDOMETER	592
SHEET METAL-INSTRUMENT PANEL	594
SHEET METAL-INSTRUMENT PANEL - INSTRUMENT- USA	596
SHEET METAL-PANEL WIRING - RELAY- WORKING LIGHT	598
CIGAR LIGHTER AND ASHTRAY	600
SHEET METAL-PANEL WIRING - RELAY PRESSURE VALVE	602
TRACTOR CAB - CONTROL BOX AUTOTRONIC	604
WIRING - ENGINE WITHOUT ETHER STARTING- PLATFORM	606
WIRING - ENGINE WITHOUT ETHER STARTING	608
WIRING - ENGINE EQUIPMENT WITH ETHER	610
WIRING - INSTRUMENT PANEL WITHOUT ETHER STARTING- PLATFORM	612
WIRING - INSTRUMENT PANEL WITHOUT ETHER STARTING- WITH CAB	614
WIRING - INSTRUMENT PANEL EQUIPMENT WITH ETHER- WITH CAB	616
SHEET METAL-PANEL WIRING - CONTINUED	618
SHEET METAL-PANEL WIRING - CONTINUATION- USA	620
WIRING - LIGHTING	622
WIRING - LIGHTING- PLATFORM WITHOUT PILLAR	624
WIRING - LIGHTING	626
FRONT LIGHTING EQUIPMENT	628
FRONT LIGHTING EQUIPMENT	630
FRONT LIGHTING EQUIPMENT - PLATFORM WITHOUT PILLAR	632

TABLE OF CONTENT

FRONT LIGHTING EQUIPMENT - UNITED STATES	634
REAR LIGHTING EQUIPMENT	636
REAR LIGHTING EQUIPMENT - PLATFORM WITHOUT PILLAR	640
REAR LIGHTING EQUIPMENT - LICENSE PLATE	644
REAR LIGHTING EQUIPMENT	646
REAR LIGHTING EQUIPMENT - UNITED STATES	648
LIGHTING KITS - 1 REAR WORK LIGHT	650
LIGHTING KITS - 2 REAR WORK LIGHT	652
LIGHTING KITS - 4 WORK LIGHT	654
LIGHTING KITS - WORKING LIGHT- UNITED STATES	656
LIGHTING KITS - DANGER PANEL	658
FRONT AXLE HYDRAULIC CONTROL - CONTROL VANE GAMMA 2 - 4 WHEEL DRIVE	660
HYDRAULIC SELECTOR VALVE KIT - FRONT AXLE CONTROL- CREEPER GEAR CONTROL	662
HYDRAULIC SELECTOR VALVE KIT - FRONT AXLE CONTROL- CREEPER GEAR CONTROL	664
TRANSFER GEAR BOX	666
FRONT LIVE AXLE - AXLE SUPPORT- 4 WHEEL DRIVE	668
FRONT LIVE AXLE - SUPPORT	670
GUARD AND TRANSMISSION SHAFT	672
FRONT LIVE AXLE - SUPPORT	674
FRONT LIVE AXLE - WITH 2 CYLINDERS- FROM TO SERIAL T 134210	676
FRONT AXLE HOUSING-4 WHEEL DRIVE - WITH 1 CYLINDER	678
FRONT AXLE HOUSING-4 WHEEL DRIVE - WITH 2 CYLINDERS- UP TO SERIAL NU T 134209	680
FRONT AXLE-DIFFERENTIAL-4 WHEEL DRIVE - HOUSING- WITH FRONT AXLE 1 CYLINDER	682
FRONT AXLE-DIFFERENTIAL-4 WHEEL DRIVE - HOUSING- WITH FRONT AXLE 2 CYLINDERS	684
FRONT AXLE-DIFFERENTIAL-4 WHEEL DRIVE - GEAR 9X44	686
FRONT AXLE DIFFERENTIAL - GEAR	688
FRONT AXLE FINAL DRIVE-4 WHEEL DRIVE - WITH 1 CYLINDER	690
FRONT AXLE FINAL DRIVE-4 WHEEL DRIVE - WITH 2 CYLINDERS- UP TO SERIAL NU T 134209	692
SPEED CHARTS	694
TRANSFERS	696
TRANSFERS	698
TRANSFERS	700
TRANSFERS	702



1-0010-086



MASSEY FERGUSON

MF 2640 TRACTOR, |-> 271213 - 1637120

1637120

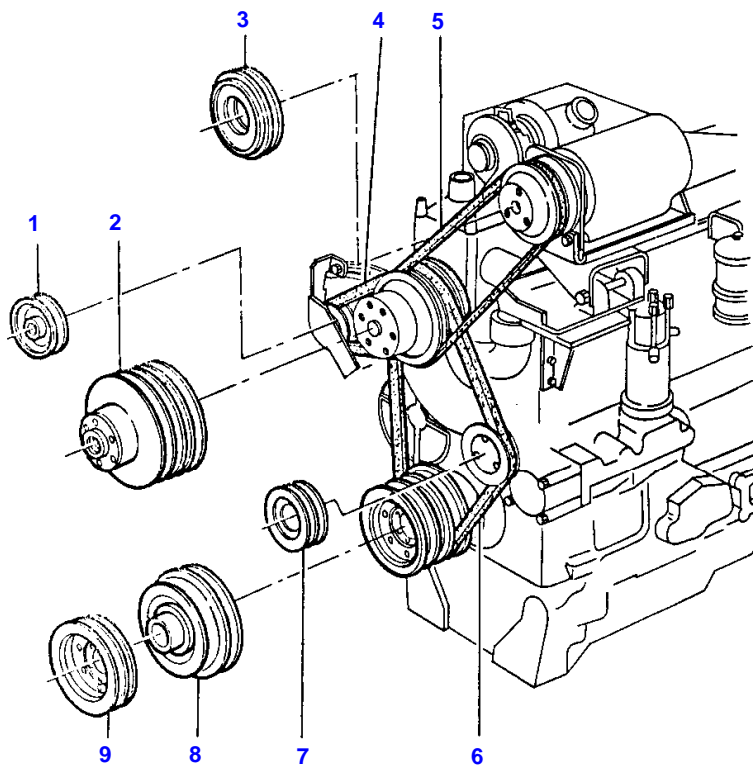
ENGINE AND ACCESSORIES - UP TO SERIAL NO

2

Item	Part Number	Qty	Description	Comments
				UP TO SERIAL NO
1	3041037M3	1	Engine	
2	353679X1	1	Screw Unc	
3		1	Alternator	(A)
				See Page - Reference Number 82/1
3		1	Alternator	(B)
				See Page - Reference Number 84/1
4	3040961M1	1	Support	
5	3040964M2	1	Spacer	
6	3040962M1	3	Spacer	
7	339376X1	1	Lock Washer	
8	339402X1	1	Nut Metric	
9	3040963M1	1	Bearer	
10		1	Compressor	See Page - Reference Number 94/1
11		1	Startermotor	See Page - Reference Number 88/1
12	353693X1	3	Screw Unc	
16		1	Tensioner	See Page - Reference Number 80/
18	339679X1	1	Bolt Metric	
20	353525X1	2	Bolt Unf	
21	353755X1	3	Washer	
22	3040944M92	1	Tensioner	
23	3042320M91	1	Cowl	
24	3040965M1	2	Spacer	
25	353446X1	3	Lock Washer	

(A)  
TRACTOR WITH CAB

(B)  
TRACTOR WITH PLATFORM



1-0010-066

MASSEY FERGUSON

MF 2640 TRACTOR, |-> 271213 - 1637120

1637120

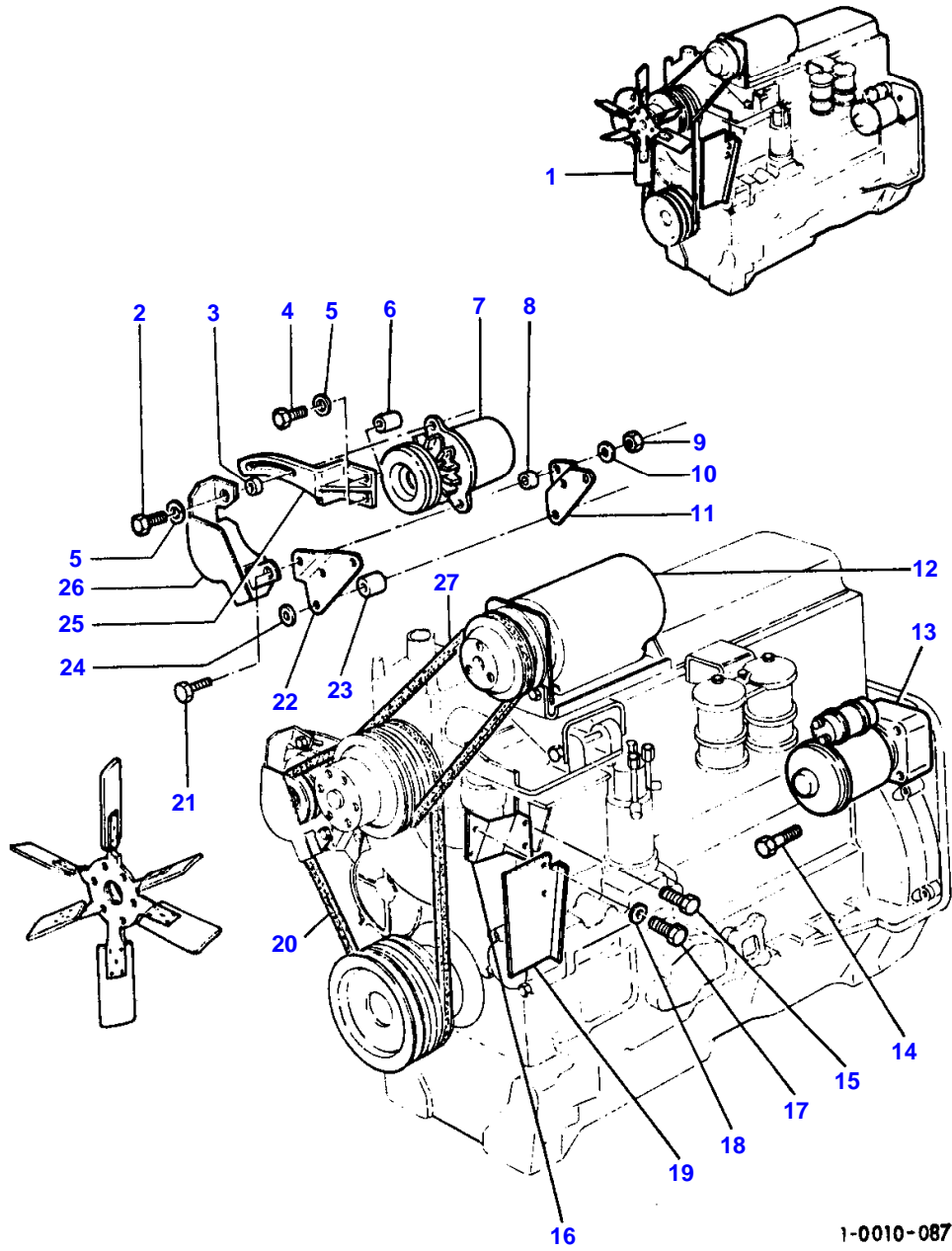
ENGINE AND ACCESSORIES - BELT- PULLEY- UP TO SERIAL NO

4

Item	Part Number	Qty	Description	Comments
				BELT- PULLEY- UP TO SERIAL NO
1	1699137M91	1	Pulley	(A)
	1642875M1	1	Pulley	(B)
2	31153792	1	Pulley,Waterpump	
3	533719M91	1	Pulley	
4	3040966M1	1	Belt	
5	3386214M1	1	Belt	
6	3045111M91	1	Belt	Up to Serial or Engine Number K 285204
	3381364M91	1	Kit, Belt	From Serial or Engine Number K 285205
7	3320297M1	1	Pulley	
8	2635674	1	Pulley,Crank	
9	31153161	1	Pulley,Crank	

(A)  
WITH ALTERNATOR-9AR 2887F AND 9AR 2851K

(B)  
WITH ALTERNATOR 9AR 2944K



1-0010-087

MASSEY FERGUSON

MF 2640 TRACTOR, |-> 271213 - 1637120

1637120

ENGINE AND ACCESSORIES - FROM TO SERIAL NO

6

Item	Part Number	Qty	Description	Comments
				FROM TO SERIAL NO
1	3041037M4	1	Engine	
2	353679X1	1	Screw Unc	(D)
	353685X1	1	Bolt Unc	(C)
3	367833X1	1	Spacer	(C)
4	361472X1	2	Screw	
5	353446X1	3	Lock Washer	
	353756X1	1	Washer	
6	3320328M1	2	Spacer	
7		1	Alternator	(A)
				See Page - Reference Number 82/1
7		1	Alternator	(B)
				See Page - Reference Number 84/1
8	3040964M2	1	Spacer	
9	339402X1	1	Nut Metric	
10	339376X1	1	Lock Washer	
11	3040963M1	1	Bearer	
12		1	Compressor	See Page - Reference Number 94/1
13		1	Startermotor	See Page - Reference Number 88/1
14	353693X1	3	Screw Unc	
15	361488X1	2	Screw	
16	3381354M1	1	Bearer	
17	353665X1	2	Screw Unc	
18	353754X1	2	Washer	
19	3052123M3	1	Deflector	
20	3381364M91	1	Kit, Belt	
21	339679X1	1	Bolt Metric	
22	3040961M1	1	Support	
23	3040962M1	3	Spacer	
24	353755X1	3	Washer	
25	3381056M1	1	Tensioner	
26	3381365M91	1	Cowl	
27	3386214M1	1	Belt	

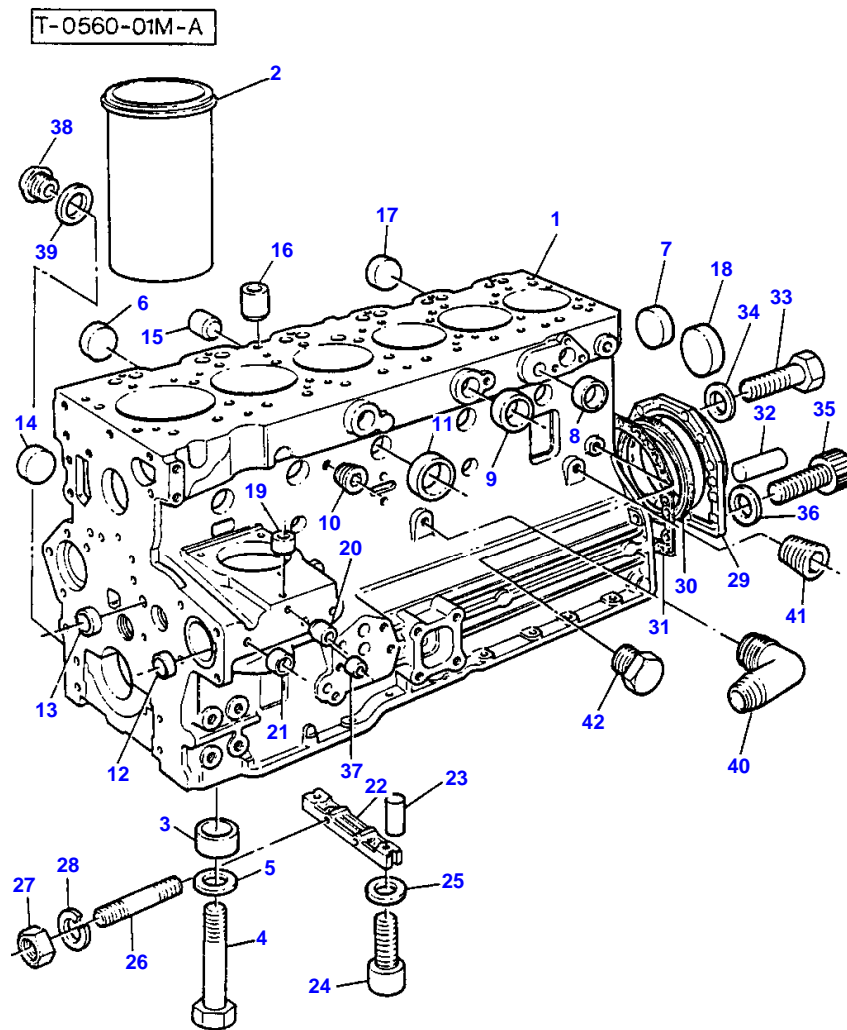
(A)  
TRACTOR WITH CAB

(B)  
TRACTOR WITH PLATFORM

(C)  
WITH COWL

(D)  
WITHOUT COWL





**Buy Now**



Our support email:

[ebooklibonline@outlook.com](mailto:ebooklibonline@outlook.com)