

Page Title	Page Number
ENGINE AND ACCESSORIES - ENGINE . ROD . DRAIN	2
CYLINDER BLOCK	6
CRANKSHAFT	10
CYLINDER HEAD	14
CYLINDER HEAD COVER	16
ROCKER ARM	18
AIR INDUCTION	20
AIR INDUCTION - PIPES	22
TIMING GEAR	24
LUBRICATING OIL SYSTEM	26
LUBRICATING OIL FILTER	28
WATER PUMP	30
FUEL PIPINGS	32
FUEL OIL LIFT PUMP	36
FUEL FILTER	38
FUEL INJECTION EQUIPMENT	40
TURBOCHARGER	42
TURBOCHARGER - PIPES	44
LUBRICATING OIL COOLER	48
AUXILIARY DRIVE	50
JOINTS AND GASKETS	52
ALTERNATOR POSITIONER	54
ALTERNATOR-LUCAS	56
STARTER-LUCAS	58
ENGINE AND ACCESSORIES - ENGINE . ROD . DRAIN	60
CYLINDER BLOCK - AT6.354.4 ENGINE	64
FLYWHEEL HOUSING - AT6.354.4 ENGINE	68
FLYWHEEL AND STARTER RING - AT6.354.4 ENGINE	70
CRANKSHAFT, PISTONS AND CONNECTING RODS - AT6.354.4 ENGINE	72
CYLINDER HEAD - AT6.354.4 ENGINE	76
ROCKER SHAFT - AT6.354.4 ENGINE	80
ENGINE LIFTING - AT6.354.4 ENGINE	84
TURBOCHARGER - AT6.354.4 ENGINE	86
TURBOCHARGER-INLET AND EXHAUST MANIFOLD - AT6.354.4 ENGINE	88
TURBOCHARGER-PIPES AND HEAT SHIELDS - AT6.354.4 ENGINE	90
TURBOCHARGER-PIPES AND HEAT SHIELDS CONT'D - AT6.354.4 ENGINE	94
TIMING GEAR AND CAMSHAFT - AT6.354.4 ENGINE	96
FRONT END DRIVE INPUT AND OUTPUT - AT6.354.4 ENGINE	100
AUXILIARY DRIVE - AT6.354.4 ENGINE	102
LUBRICATING OIL PUMP AND DELIVERY HOUSING - AT6.354.4 ENGINE	104
LUBRICATING OIL SUMP - AT6.354.4 ENGINE	106
LUBRICATING OIL FILLER AND BREATHER - AT6.354.4 ENGINE	108
LUBRICATING OIL FILTER AND INTEGRAL COOLER - AT6.354.4 ENGINE	110
LUBRICATING OIL FILTER AND INTEGRAL COOLER-CONTINUATION - AT6.354.4 ENGINE	112
WATER PUMP, THERMOSTAT AND HEAT EXCHANGER - AT6.354.4 ENGINE	114
WATER OUTLET AND INLET - AT6.354.4 ENGINE	118
GEAR DRIVE AUXILIARY DRIVE OPTIONS - AT6.354.4 ENGINE	120
FUEL INJECTION EQUIPMENT (DIESEL) - AT6.354.4 ENGINE	122
COLD START SYSTEM - AT6.354.4 ENGINE	126
LOW PRESSURE FUEL SYSTEM - AT6.354.4 ENGINE	128
JOINTS AND GASKETS-TOP SERVICE KIT - AT6.354.4 ENGINE	132
JOINTS AND GASKETS-BOTTOM SERVICE KIT - AT6.354.4 ENGINE	134
STARTER MOTOR - AT6.354.4 ENGINE	136
STARTER-LUCAS - DETAIL	138
ALTERNATOR AND GENERATOR - AT6.354.4 ENGINE	140
ALTERNATOR-LUCAS - DETAIL	142
ELECTRICAL EQUIPMENT	144
RADIATOR	146
RADIATOR - TUBES	148
ROTATING AIR INTAKE	150
FUEL TANK AND ATTACHMENTS - 300 L	152
FUEL TANK AND ATTACHMENTS - TUBE	154
FUEL TANK AND ATTACHMENTS - COWL	156
EXHAUST SYSTEM	158
AIR FILTER - DETAIL	160
AIR PRE FILTER	162

TABLE OF CONTENT

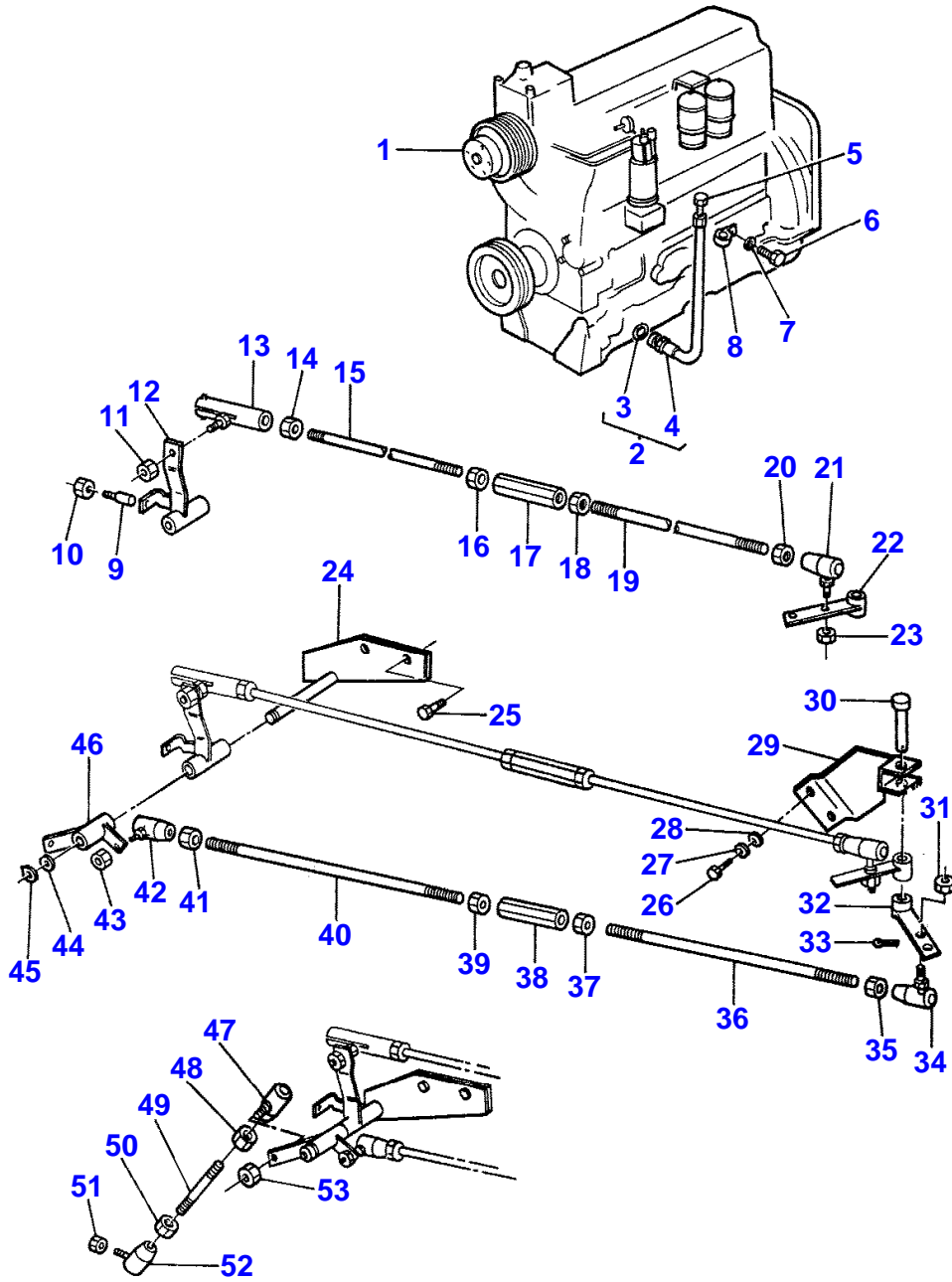
ENGINE FRAME	164
MOTOR COVER	166
MOTOR COVER - PARTITION	170
ELEVATOR	172
ELEVATOR - UPPER SHAFT	176
ELEVATOR - DRUM	178
ELEVATOR - CHAIN	180
CYLINDER HOUSING - LEFT SIDE	182
CYLINDER HOUSING - RIGHT SIDE	184
CYLINDER HOUSING - INTERNAL COMPONENTS	186
CYLINDER HOUSING - DOOR-COVER	188
SEPARATOR CLUTCH - CONTROLS	190
SEPARATOR CLUTCH	194
REAR BEATER - DRIVING	196
REAR BEATER	198
CYLINDER	200
CYLINDER - DRIVE GEAR BOX- GEAR TRAIN	204
CYLINDER - DRIVE GEAR BOX	206
CYLINDER - DRIVE	208
CONCAVE - UNIVERSAL	210
CONTROL LINKAGE	212
CONTROL LINKAGE - REAR	216
STONE STRAP	220
CASCADE SEPARATOR - HOOD-DOOR	222
CASCADE SEPARATOR - HOOD - INTERNAL COMPONENTS	224
CASCADE SEPARATOR - BELT - DRIVE	226
CASCADE SEPARATOR - GRAIN ELEVATOR - LOWER COMPONENT	228
CASCADE SEPARATOR - GRAIN ELEVATOR - UPPER COMPONENT	232
CASCADE SEPARATOR - CONTROL	236
CASCADE SEPARATOR - MECHANISM	238
CASCADE SEPARATOR - GUARDS - INTERNAL COMPONENTS	240
CASCADE SEPARATOR - GUARDS - EXTERNAL COMPONENTS	244
CASCADE SEPARATOR - MISCELLANEOUS	246
SHAKER SHOE - SHAKER SHOE DOUBLE SHOE - INTERNAL COMPONENTS	248
SHAKER SHOE - SHAKER SHOE DOUBLE SHOE - EXTERNAL COMPONENTS	250
SHAKER SHOE - SHAKER SHOE DOUBLE SHOE - EXTERNAL COMPONENTS	252
SHAKER SHOE - HILLSIDE KIT	254
PAN	256
PAN - CONTROLS	258
SCREEN - UPPER SHOE , SHAKER SHOE DOUBLE SHOE	260
SCREEN - LOWER SHOE , SHAKER SHOE DOUBLE SHOE	262
SCREEN - DRIVE-UPPER COMPONENTS	264
SCREEN - DRIVE-LOWER COMPONENTS	266
FANNING HILL	268
FANNING HILL - GUARDS	272
SHAKER SHOE DRIVE	274
STRAW WALKER - UPPER DRIVE	276
STRAW WALKER - LOWER DRIVE	278
STRAW WALKER	280
STRAW WALKER BODY - EXTERNAL COMPONENTS	282
STRAW WALKER BODY - INTERNAL COMPONENTS	286
GLEANINGS ELEVATOR - UPPER COMPONENTS	288
GLEANINGS ELEVATOR - LOWER COMPONENT	290
GLEANINGS ELEVATOR - SLINGER HOUSING	294
RETURN ELEVATOR ALARM ARRANGEMENT	296
ALARM	298
MAIN FRAME	300
MAIN FRAME - REINFORCEMENT	302
MAIN FRAME - DOOR	306
HOOD	308
GRAIN TANK - LEFT COMPONENT	310
GRAIN TANK - RIGHT COMPONENT	312
GRAIN TANK - EXTENSION	314
GRAIN TANK - LOWER COMPONENT	318
GRAIN TANK - LOWER AUGER	320
GRAIN TANK - REAR PANEL	322
AUGER AND PITMAN CRANK	324
GRAIN ELEVATOR - UPPER COMPONENTS	326

TABLE OF CONTENT

GRAIN ELEVATOR - LOWER COMPONENT	330
GRAIN ELEVATOR - CHAIN	332
UNLOADER DRIVE AND CONTROLS	334
AUGER LOWER - SPOUT	338
AUGER LOWER - MECHANISM	340
FLYWHEEL	342
TRANSMISSION - RIGHT SIDE	346
TRANSMISSION - LEFT SIDE	350
COUNTER SHAFT AND CLUTCH	352
COUNTER SHAFT AND CLUTCH - LUBRICATION	356
SECONDARY COUNTERSHAFT	358
TRACTION DRIVE - VARIATOR	360
TRACTION CLUTCH - PEDAL	364
TRACTION CLUTCH - CONTROLS MODEL 83	366
TRACTION CLUTCH - CONTROLS MODEL 84	368
TRACTION CLUTCH - PRESSURE VALVE	370
TRACTION CLUTCH - HARNESS-PEDAL	372
FRONT AXLE FINAL DRIVE-4 WHEEL DRIVE	374
TRACTION DRIVE - HYDROSTATIC-LOWER COMPONENTS	378
TRACTION CLUTCH - HYDROSTATIC	380
TRACTION DRIVE - HYDROSTATIC-FILTER-OIL TANK-PUMP	382
TRACTION DRIVE - HYDROSTATIC-UPPER COMPONENTS- COOLER-OIL TANK	384
HYDRAULIC PUMP - HYDROSTATIC	386
HYDRAULIC MOTOR - HYDROSTATIC	390
LUBRICATING OIL FILTER - HYDROSTATIC	394
TRANSMISSION GEAR BOX - COVER-HOUSING	396
TRANSMISSION GEAR BOX - INPUT SHAFT	398
TRANSMISSION GEAR BOX - SECOND MOTION SHAFT	400
TRANSMISSION GEAR BOX - SPEED GEAR	402
TRANSMISSION GEAR BOX - DIFFERENTIAL	404
TRANSMISSION GEAR BOX - ASSEMBLING	406
TRANSMISSION GEAR BOX - DRIVE-UPPER COMPONENTS	408
TRANSMISSION GEAR BOX - DRIVE-LOWER COMPONENTS	412
FRONT AXLE	414
FRONT WHEELS	416
HAND BRAKE	418
GEARBOX PARKING BRAKE - DRIVE	420
BRAKES OPERATING - HYDRAULIC	422
BRAKES OPERATING - PEDAL	424
BRAKES OPERATING - PEDAL	426
DRUM BRAKE	428
GEARBOX PARKING BRAKE	430
OPERATORS PLATFORM	432
OPERATORS PLATFORM - CONTROLS	436
OPERATORS PLATFORM - RAIL WITHCAB	438
OPERATORS PLATFORM	440
SEAT - SIFRA TP14 ZA	442
SPRING SUPPORT	444
CONTROL PANEL - HOUSING	446
CONTROL PANEL - GUARD LOWER	450
CONTROL PANEL - SOUND INSULATION	452
CONTROL PANEL - LEVER	454
CONTROL PANEL - LEVER WITH A.T.H.C	458
CONTROL PANEL - LEVER	460
CONTROL PANEL - CABLE WITH A.T.H.C	462
CONTROL PANEL - DRESSING	464
INSTRUMENTS - SUPPORT	466
INSTRUMENTS - INSTRUMENT-SWITCH	468
INSTRUMENTS - JUNCTION	474
INSTRUMENTS - INSTRUMENT	476
CAB - FRONT	484
CAB - REAR	486
CAB - RIGHT	488
CAB - LEFT	490
CAB - CONSOLE	492
CAB - MISCELLANEOUS	494
CAB - FLOOR	496
CAB - WIRING	498

TABLE OF CONTENT

AIR CONDITIONNER-COMPRESSOR - KYSOR	500
AIR CONDITIONNER-COMPRESSOR - KYSOR-BRACKET AND ASSEMBLING	502
AIR CONDITIONNER-CONDENSOR - KYSOR	504
AIR CONDITIONNER-CONDENSOR - BRACKET	508
AIR CONDITIONNER-EVAPORATOR - KYSOR	510
AIR CONDITIONNER-EVAPORATOR - KYSOR	512
STEERING COLUMN	514
STEERING COLUMN - HOUSING	516
STEERING COLUMN - ADJUSTING	518
STEERING PUMP	520
SAFETY BLOCK	522
REAR AXLE	524
REAR AXLE - IMPELLER HUB	526
REAR WHEELS	528
HYDRAULIC CIRCUIT - CONTAINER-PUMP-VALVE	530
HYDRAULIC CIRCUIT - REEL	532
HYDRAULIC CIRCUIT - TABLE LIFT	534
HYDRAULIC CIRCUIT - TABLE LIFT- WITH A.T.H.C	536
HYDRAULIC CIRCUIT - STEERING	540
HYDRAULIC CIRCUIT - REAR BEATER CLUTCH	544
HYDRAULIC CIRCUIT - DISCHARGE CHUTE	546
HYDRAULIC CIRCUIT	550
UNLOADER SPOUT ARRANGEMENTS	552
HYDRAULIC PUMP	554
CONTROL VALVE - UPPER COMPONENTS	556
CONTROL VALVE - LOWER COMPONENT	558
CONTROL VALVE - UPPER COMPONENTS	560
CONTROL VALVE - LOWER COMPONENT	562
RAM FOR STEERING	564
RAM FOR TABLE LIFT - LEFT	566
RAM FOR TABLE LIFT - RIGHT	568
LIGHTING - FRONT	570
LIGHTING - LAMP	572
LIGHTING - LAMP- GERMANY	574
LIGHTING - REAR	576
LIGHTING - HARNESS- REAR	578
LIGHTING - SIGNALLING	580
LIGHTING - ROTATING LIGHT-HELLA	582
LIGHTING - ROTATING LIGHT-S.E.V	584
LIGHTING - SUPPORT (REFLECTOR)	586
LIGHTING - REAR	588
MIRRORS	590
TOOLS	592
TRANSFERS	594
TRANSFERS	596
WEIGHT FRAME AND WEIGHTS	600
WHEEL WEDGES	602
GUARDS - GERMANY	604
GUARDS - LEFT SIDE	606
GUARDS - ELEVATOR	608
CAB HEATING KIT - CODE 511	610
STRAWWALKER RISERS - CODE 517	612
KIT DRIVE RIGHT HAND FOR 5 ROWS CORN HEADER - CODE 518	614
KIT 3 LOWER SIEVES-DIAMETER 1/4,3/8,1/2. - CODE 525	616
HEIGHT CUT OFF INDICATOR KIT - CODE 562	618
FANNING MILL BLADES-SMALL SEED	620
MAIZE EQUIPMENT - CODE 552	622



1-0010-090

MASSEY FERGUSON

MF 840/845 COMBINES - 1637129

1637129

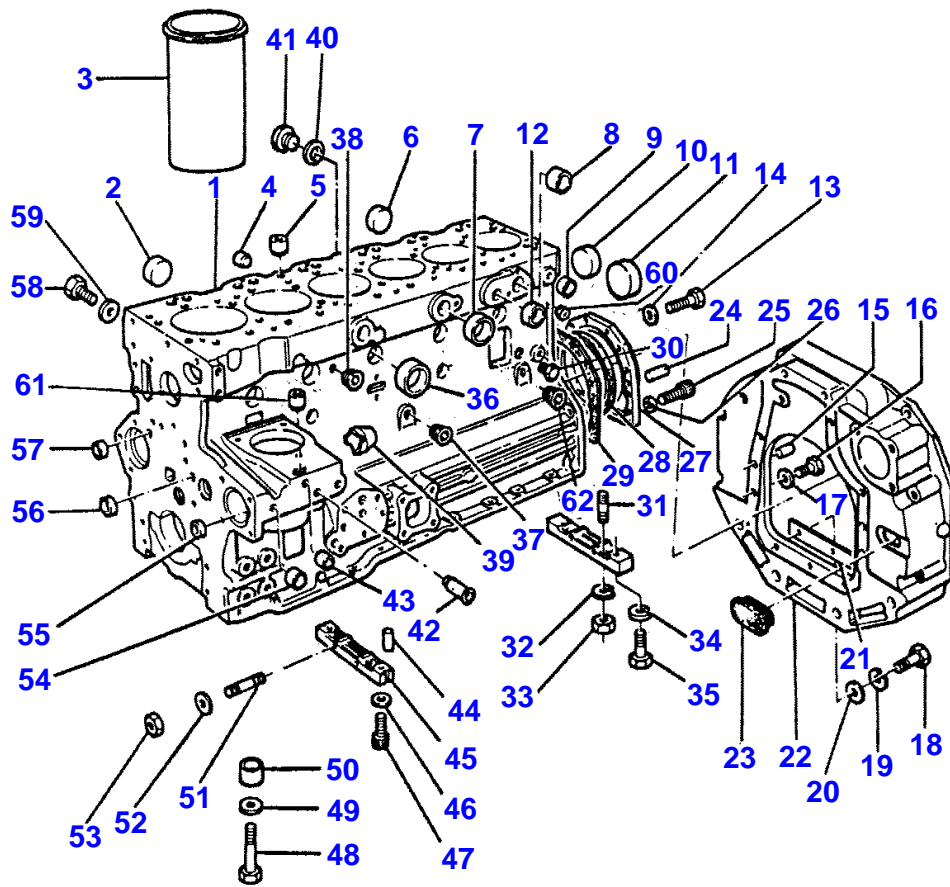
ENGINE AND ACCESSORIES - ENGINE . ROD . DRAIN

2

Item	Part Number	Qty	Description	Comments
				ENGINE . ROD . DRAIN
1		1	Engine	(B) See Page - Reference Number 60/
1	3374757M91	1	Engine	(A)
2	3371689M91	1	Hydr Hose	
3	831497M1	2	O Ring	(2)
4		1	Hydr Hose	(2)
5	356446X1	1	Plug	
6	361444X1	1	Screw	
7	0920053	1	Washer	
8	360059X1	1	Tie	
9	271675M1	1	Clevis Pin	
10	358656X1	1	Nut	
11	0576150	1	Nut	
12	3044950M91	1	Lever	
13	3045157M91	1	Toggle	
14	0576150	1	Nut	
15	3044979M1	1	Stem	
16	0576150	1	Nut	
17	525396M1	1	Buckle	
18	338160X1	1	Nut	
19	3049619M1	1	Stem	
20	0576150	1	Nut	
21	3052849M1	1	Toggle	
22	3044960M91	1	Lever	
23	0576150	1	Nut	
24	3044956M91	1	Bearer	
25	353540X1	2	Screw Unf	
26	353517X1	2	Screw Unf	
27	0920053	2	Washer	
28	0920497	2	Washer	
29	3049017M91	1	Bearer	
30	195612M1	1	Pin	
31	0576150	1	Nut	
32	3044963M91	1	Lever	
33	354057X1	1	Pin	
34	3052849M1	1	Toggle	
35	0576150	1	Nut	
36	3049619M1	1	Stem	
37	338160X1	1	Nut	
38	525396M1	1	Buckle	
39	0576150	1	Nut	
40	3044979M1	1	Stem	
41	0576150	1	Nut	
42	3052849M1	1	Toggle	
43	0576150	1	Nut	
44	353756X1	1	Washer	
45	355848X1	1	Snpring	
46	3044952M91	1	Lever	
47	3052849M1	1	Toggle	
48	0576150	1	Nut	
49	3044982M1	1	Stem	
50	0576150	1	Nut	
51	0576150	1	Nut	
52	3052849M1	1	Toggle	
53	0576150	1	Nut	

(A)
MODEL 83

(B)
MODEL 84



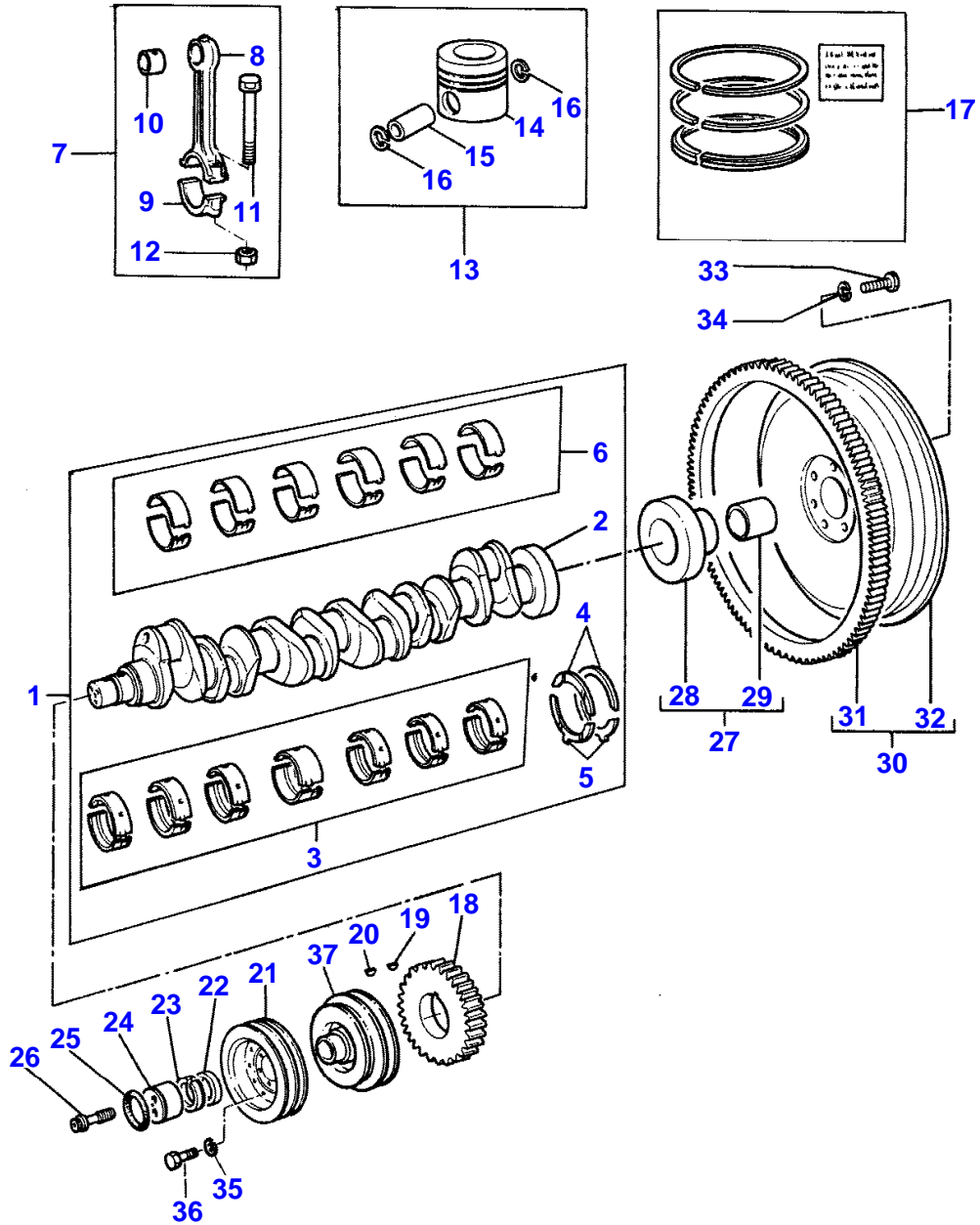
1 - 0050 -036

CYLINDER BLOCK

Item	Part Number	Qty	Description	Comments
1	63614	1	Cylinder Block	
2	0650618	6	Plug	(1)
3	31358393	6	Liner	(1) (A)
3	31358394	6	Liner	(B)
4	32417133	1	Plug	
5	32417134	1	Plug	
6	0650618	6	Plug	
7	0650710	4	Plug	(1)
8	0650618	1	Plug	
9	0650563	1	Plug	
10	0650618	2	Plug	(1)
11	32416105	1	Plug	
12	0650664	1	Plug	(1)
13	0746211	10	Bolt	
14	0920003	10	Washer	
15	32455119	2	Dowel	
16	0746424	6	Bolt	
17	33115129	6	Washer	
18	0746253	3	Screw	
19	0920053	3	Washer	
20	0920003	3	Washer	
21	36125305	1	Cover	
22	37147644	1	Plate	
23	37813113	1	Plug	
24	0350009	2	Dowel	
25	2172530	2	Capscrew	
26	33112111	2	Washer	
27	37513851	1	Housing	
28	2415391	1	Seal	
29	36817157	1	Joint	
30	32161114	1	Plug	
31	0826214	4	Stud	
32	0920053	4	Washer	
33	0576002	4	Nut	
34	0920521	2	Washer	
35	2176369	2	Screw	
36	32417155	5	Plug	(1)
37	2431131	1	Plug	
38	0650586	1	Plug	(1)
39	32813108	1	Cover	
40	2411156	1	Washer	
41	32161317	1	Plug	
42	33435133	1	Tube	
43	32417143	1	Plug	
44	32811408	4	Joint	
45	36277831	2	Bridge Piece	
46	0920521	2	Washer	
47	2176369	2	Screw	
48	32166329	14	Bolt	(1)
49	33121421	14	Washer	
50	33142111	14	Thimble	(1)
51	0826201	2	Stud	
52	0920053	2	Washer	
53	0576002	2	Nut	
54	32417127	2	Plug	
55	32417115	1	Plug	
56	0650566	2	Plug	
57	32417115	2	Plug	
58	32168231	4	Plug	
59	2411157	4	Washer	
60	0650593	1	Plug	
61	32417134	2	Plug	
62	0650594	1	Plug	

(A)
PRESS FIT

(B)
SLIP FIT



1-0080-024

CRANKSHAFT

Item	Part Number	Qty	Description	Comments
1	68077	1	Kit, Crankshaft	
2		1	Crankshaft	(1) Not serviced, order REF NO1
3	68079	1	Kit, Bearing	(C)
	68079A	X	Kit, Bearing	(C) Thickness -0,25MM
3	68079B	X	Kit, Bearing	(C) Thickness -0,50MM
3	68079C	X	Kit, Bearing	(C) Thickness -0,75MM
4	31137311	2	Washer	(1)
	31137312	X	Thrust Washer	Thickness +0,17MM
5	31137321	2	Washer	(1)
	31137322	X	Thrust Washer	Thickness +0,17MM
6	89064	1	Kit, Bearing	(1) (C)
6	89064A	X	Kit, Bearing	(C) Thickness 0,25MM
6	89064B	X	Kit, Bearing	(C) Thickness 0,50MM
6	89064C	X	Kit, Bearing	Thickness 0,75MM
7	41152923	6	Conrod	Repairs and replaces 63408
8		1	Piston Rod	(7) Not serviced, order REF NO7
9		1	Cap	(7) Not serviced, order REF NO7
10	31134131	1	Bush	(7)
11	32762116	2	Bolt	(7)
12	33221328	2	Nut	(7) Repairs and replaces 33221321
13	68802	6	Kit, Piston	(A) Repairs and replaces 68390
13	68803	6	Kit, Piston	(B) Repairs and replaces 68391
14		1	Piston	(13) Not serviced, order REF NO13
15		1	Piston Pin	(13) Not serviced, order REF NO13
16	2721A029	2	Circlip	(13)
17	41158005	6	Kit, Piston Ring	Repairs and replaces 68238
18	31171211	1	Gear,Crankshaft	
19	0500012	1	Woodruff Key	
20	0500005	1	Woodruff Key	
21	3115T021	1	Pulley	
22	33125412	1	Spacer	
23	2417711	1	Element	
24	32418313	1	Thrust Plate	
25	2415638	1	O Ring	
26	32186133	3	Screw	
27	41425216	1	Adaptor	
28		1	Adaptor	(27) Not serviced, order REF NO27
29	2513246	1	Bush	(27)
30	41117088	1	Flywheel	
31	0410264	1	Gear,Starterring	(30)
32		1	Flywheel	(30) Not serviced, order REF NO30
33	0746853	6	Bolt	
34	33117121	6	Washer	
35	0920053	9	Washer	
36	0096236	9	Bolt	
37	2635692	1	Pulley,Crank	

(A)
UNTOPPED

(B)
PRE-TOPPED

(C)

MASSEY FERGUSON

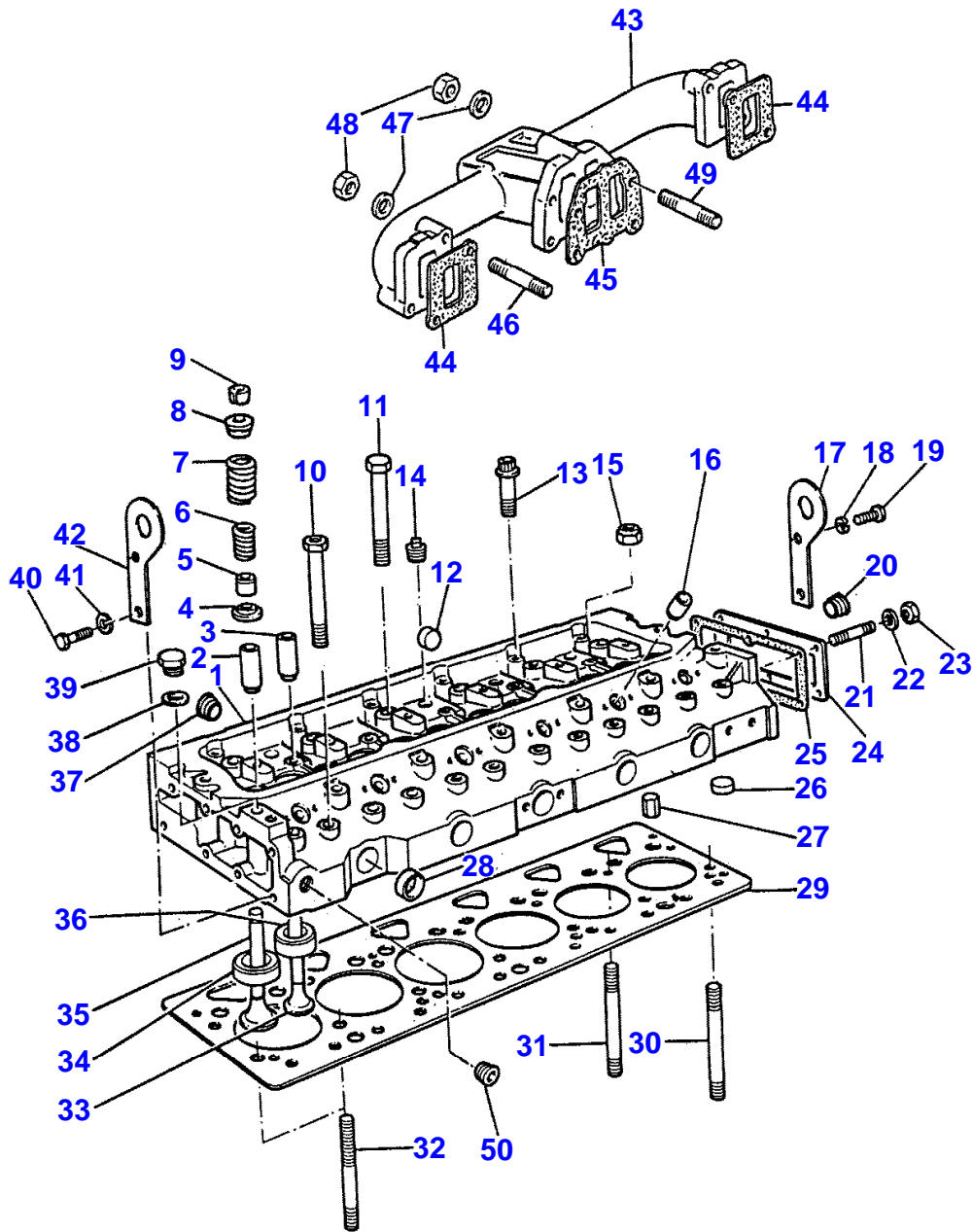
MF 840/845 COMBINES - 1637129

1637129

CRANKSHAFT

10

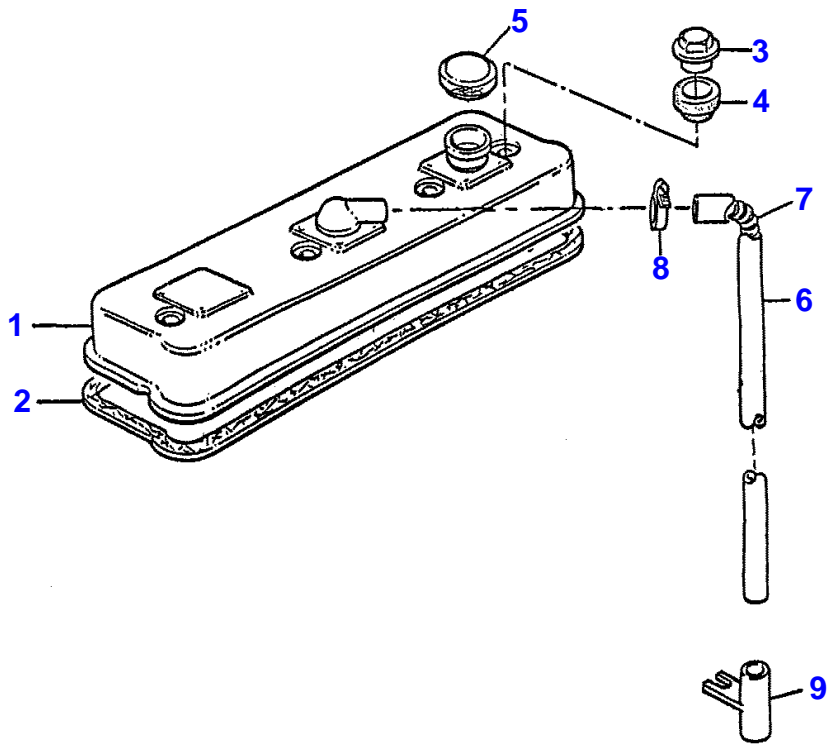
Item	Part Number	Qty	Description	Comments
				PRE-FINISHED



1-0075-037

CYLINDER HEAD

Item	Part Number	Qty	Description	Comments
1	68172	1	Cylinder Head	
2	33261732	6	Guide	(1)
3	33261752	6	Guide	(1)
4	33415118	12	Washer	(1)
5	33817117	12	Seal	(1)
6	31744131	12	Spring	(1)
7	31745121	12	Spring	(1)
8	33423122	12	Cap	(1)
9	33173108	12	Cotter	(1)
10	32166219	12	Bolt	
11	32166221	6	Bolt	
12	32417127	6	Plug	(1)
13	2172142	6	Bolt	
14	2431154	3	Plug	(1)
15	33531132	14	Nut	
16	33242112	6	Sleeve	(1)
17	36237734	1	Bracket	
18	0920054	2	Washer	
19	0746453	2	Setscrew	
20	2431154	1	Plug	
21	0826244	6	Stud	
22	0920053	6	Washer	
23	0576002	6	Nut	
24	3571N003	1	Cover	
25	0490485	1	Joint	
26	32417122	13	Plug	(1)
27	2116190	2	Dowel	
28	0650563	4	Plug	(1)
29	36812613	1	Gasket	
30	32526328	4	Stud	
31	32526329	9	Stud	
32	32526332	1	Stud	
33	31431961	6	Valve Exhaust	(1)
34	33152155	6	Insert	(1)
35	31431315	6	Valve Inlet	(1)
36	33152154	6	Insert	(1)
37	32114501	1	Plug	
38	2411157	1	Washer	
39	0650203	1	Plug	
40	0096432	2	Screw	
41	0920054	2	Washer	
42	36237734	1	Bracket	
43	37783161	1	Exhaust Manifold	
44	36862191	2	Gasket	
45	36866746	1	Joint	
46	0826509	4	Stud	
47	33115117	8	Spacer	
48	2188135	8	Nut	
49	0826439	4	Stud	
50	2431154	1	Plug	



1-0085-022

Buy Now



Our support email:

ebooklibonline@outlook.com