

Page Title	Page Number
ENGINE AND ACCESSORIES - ENGINE . ROD . DRAIN	2
CYLINDER BLOCK - A6.354.4 ENGINE	6
FLYWHEEL HOUSING - A6.354.4 ENGINE	10
FLYWHEEL AND STARTER RING - A6.354.4 ENGINE	12
CRANKSHAFT, PISTONS AND CONNECTING RODS - A6.354.4 ENGINE	14
CYLINDER HEAD - A6.354.4 ENGINE	18
ROCKER SHAFT - A6.354.4 ENGINE	20
INDUCTION MANIFOLD - A6.354.4 ENGINE	24
EXHAUST MANIFOLD - A6.354.4 ENGINE	26
ENGINE LIFTING - A6.354.4 ENGINE	28
TIMING GEAR AND CAMSHAFT - A6.354.4 ENGINE	30
FRONT END DRIVE INPUT AND OUTPUT - A6.354.4 ENGINE	34
AUXILIARY DRIVE - A6.354.4 ENGINE	36
GEAR DRIVE AUXILIARY DRIVE OPTIONS - A6.354.4 ENGINE	38
LUBRICATING OIL PUMP AND DELIVERY HOUSING - A6.354.4 ENGINE	40
LUBRICATING OIL SUMP - A6.354.4 ENGINE	42
LUBRICATING OIL FILLER AND BREATHER - A6.354.4 ENGINE	44
LUBRICATING OIL FILTER AND INTEGRAL COOLER - A6.354.4 ENGINE	46
WATER PUMP, THERMOSTAT AND HEAT EXCHANGER - A6.354.4 ENGINE	48
WATER OUTLET AND INLET - A6.354.4 ENGINE	52
FUEL INJECTION EQUIPMENT (DIESEL) - A6.354.4 ENGINE	54
COLD START SYSTEM - A6.354.4 ENGINE	58
LOW PRESSURE FUEL SYSTEM - A6.354.4 ENGINE	60
JOINTS AND GASKETS-TOP SERVICE KIT - A6.354.4 ENGINE	64
JOINTS AND GASKETS-BOTTOM SERVICE KIT - A6.354.4 ENGINE	66
STARTER MOTOR - A6.354.4 ENGINE	68
STARTER-LUCAS - DETAIL	70
ALTERNATOR AND GENERATOR - A6.354.4 ENGINE	72
ALTERNATOR-LUCAS - DETAIL	74
ALTERNATOR-LUCAS - DETAIL	76
ELECTRICAL EQUIPMENT	78
RADIATOR	80
RADIATOR - TUBES	82
ROTATING AIR INTAKE	84
FUEL TANK AND ATTACHMENTS	86
FUEL TANK AND ATTACHMENTS - TUBE	88
FUEL TANK AND ATTACHMENTS - COWL	90
AIR FILTER	92
AIR FILTER - DETAIL	94
AIR PRE FILTER	96
EXHAUST SYSTEM	98
ENGINE FRAME	100
MOTOR COVER	102
MOTOR COVER - PARTITION	106
ELEVATOR	108
ELEVATOR - UPPER SHAFT	112
ELEVATOR - DRUM	114
ELEVATOR - CHAIN	116
CYLINDER HOUSING - LEFT SIDE	118
CYLINDER HOUSING - RIGHT SIDE	120
CYLINDER HOUSING - INTERNAL COMPONENTS	122
CYLINDER HOUSING - DOOR-COVER	124
SEPARATOR CLUTCH - CONTROLS	126
SEPARATOR CLUTCH	130
REAR BEATER - DRIVING	132
REAR BEATER	134
CYLINDER	136
CYLINDER - DRIVE GEAR BOX	140
CYLINDER - DRIVE	144
CONCAVE - UNIVERSAL	146
CONTROL LINKAGE	148
CONTROL LINKAGE - REAR	152
STONE STRAP	156
CASCADE SEPARATOR - HOOD-DOOR	158
CASCADE SEPARATOR - HOOD - INTERNAL COMPONENTS	160
CASCADE SEPARATOR - BELT - DRIVE	162

TABLE OF CONTENT

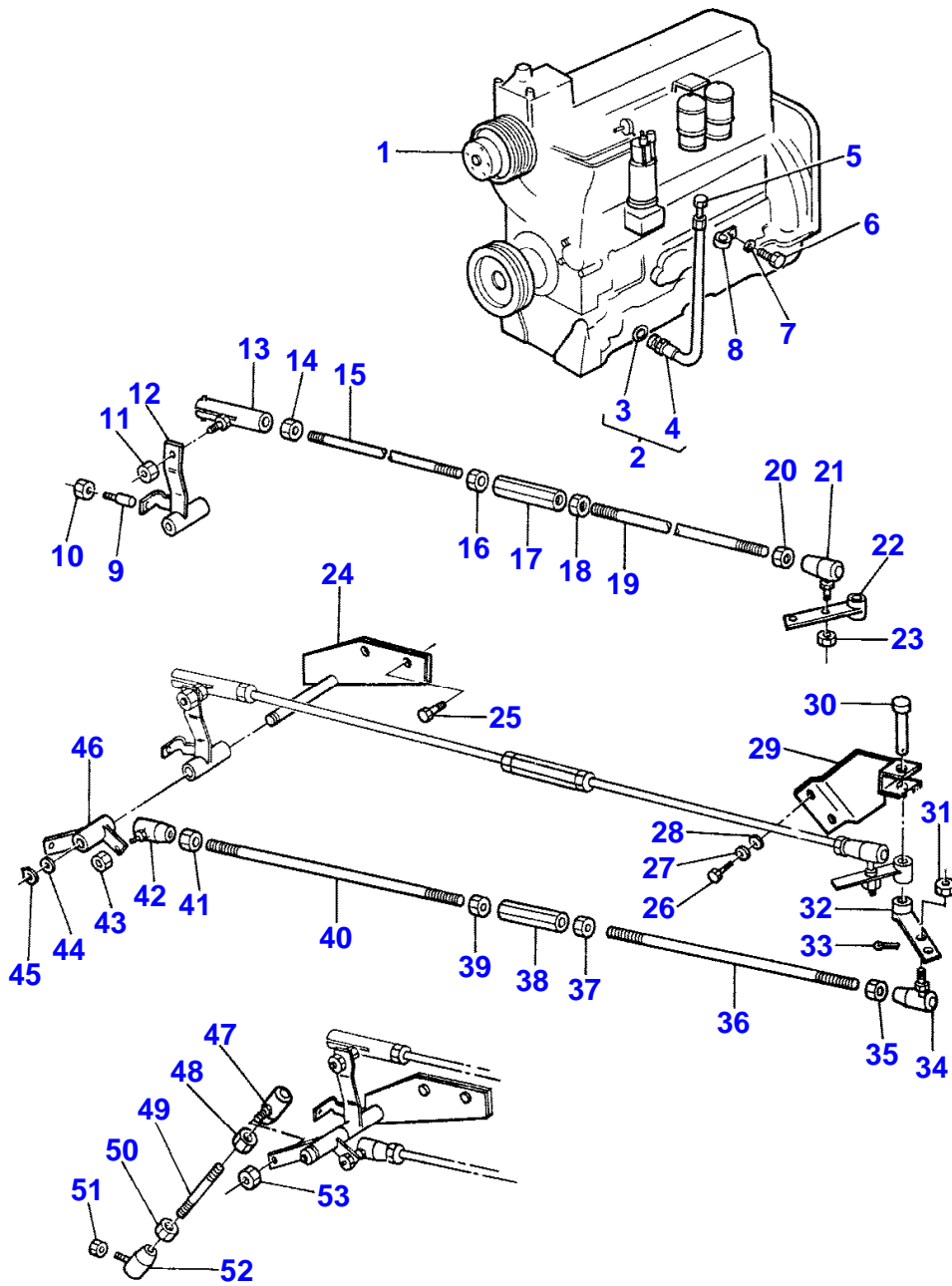
CASCADE SEPARATOR - GRAIN ELEVATOR - LOWER COMPONENT	164
CASCADE SEPARATOR - GRAIN ELEVATOR - UPPER COMPONENT	168
CASCADE SEPARATOR - CONTROL	172
CASCADE SEPARATOR - MECHANISM	174
CASCADE SEPARATOR - GUARDS - INTERNAL COMPONENTS	176
CASCADE SEPARATOR - GUARDS - EXTERNAL COMPONENTS	180
CASCADE SEPARATOR - MISCELLANEOUS	182
SHAKER SHOE - SHAKER SHOE DOUBLE SHOE - INTERNAL COMPONENTS	184
SHAKER SHOE - SHAKER SHOE DOUBLE SHOE - EXTERNAL COMPONENTS	186
SHAKER SHOE - SHAKER SHOE DOUBLE SHOE - EXTERNAL COMPONENTS	188
SHAKER SHOE - SHAKER SHOE TRIPLE SHOE - INTERNAL COMPONENTS	190
SHAKER SHOE - SHAKER SHOE TRIPLE SHOE - EXTERNAL COMPONENTS	192
SHAKER SHOE - HILLSIDE KIT	194
SCREEN - UPPER SHOE , SHAKER SHOE DOUBLE SHOE	196
SCREEN - LOWER SHOE , SHAKER SHOE DOUBLE SHOE	198
SCREEN - UPPER SHOE , SHAKER SHOE TRIPLE SHOE	200
SCREEN - MIDDLE SHOE , SHAKER SHOE TRIPLE SHOE	202
SCREEN - LOWER SHOE , SHAKER SHOE TRIPLE SHOE	204
SCREEN - FOURTH SHOE , SHAKER SHOE TRIPLE SHOE	206
SCREEN - DRIVE-UPPER COMPONENTS	208
SCREEN - DRIVE-LOWER COMPONENTS	210
FANNING HILL	212
FANNING HILL - GUARDS	216
SHAKER SHOE DRIVE	218
PAN	220
PAN - CONTROLS	222
STRAW WALKER - UPPER DRIVE	224
STRAW WALKER - LOWER DRIVE	226
STRAW WALKER	228
STRAW WALKER BODY - EXTERNAL COMPONENTS	230
STRAW WALKER BODY - INTERNAL COMPONENTS	234
GLEANINGS ELEVATOR - UPPER COMPONENTS	236
GLEANINGS ELEVATOR - LOWER COMPONENT	238
GLEANINGS ELEVATOR - SLINGER HOUSING	242
RETURN ELEVATOR ALARM ARRANGEMENT	244
ALARM	246
MAIN FRAME	248
MAIN FRAME - REINFORCEMENT	250
MAIN FRAME - DOOR	254
HOOD	256
GRAIN TANK - LEFT COMPONENT	258
GRAIN TANK - RIGHT COMPONENT	260
GRAIN TANK - EXTENSION	262
GRAIN TANK - LOWER COMPONENT	264
GRAIN TANK - LOWER AUGER	266
GRAIN TANK - REAR PANEL	270
AUGER AND PITMAN CRANK	272
GRAIN ELEVATOR - UPPER COMPONENTS	274
GRAIN ELEVATOR - LOWER COMPONENT	278
GRAIN ELEVATOR - CHAIN	280
UNLOADER DRIVE AND CONTROLS	282
AUGER LOWER - SPOUT	286
AUGER LOWER - MECHANISM	288
FLYWHEEL	290
TRANSMISSION - RIGHT SIDE	294
TRANSMISSION - LEFT SIDE	298
COUNTER SHAFT AND CLUTCH	300
COUNTER SHAFT AND CLUTCH - LUBRICATION	304
SECONDARY COUNTERSHAFT	306
TRACTION DRIVE - VARIATOR	308
TRACTION CLUTCH	310
TRACTION CLUTCH - CONTROL	312
TRACTION CLUTCH - PEDAL	314
TRACTION CLUTCH - HYDRAULIC	316
FRONT AXLE FINAL DRIVE-4 WHEEL DRIVE	318
TRANSMISSION GEAR BOX - COVER-HOUSING	322
TRANSMISSION GEAR BOX - INPUT SHAFT	324
TRANSMISSION GEAR BOX - SECOND MOTION SHAFT	326

TABLE OF CONTENT

TRANSMISSION GEAR BOX - GEAR	328
TRANSMISSION GEAR BOX - DIFFERENTIAL	330
TRANSMISSION GEAR BOX - DRIVE-UPPER COMPONENTS	332
TRANSMISSION GEAR BOX - DRIVE-LOWER COMPONENTS	336
FRONT AXLE	338
FRONT WHEELS	342
HAND BRAKE	344
GEARBOX PARKING BRAKE - CONTROLS	346
GEARBOX PARKING BRAKE	348
BRAKES OPERATING - HYDRAULIC	350
BRAKES OPERATING - PEDAL	352
BRAKES OPERATING - PEDAL	354
DRUM BRAKE	356
OPERATORS PLATFORM	358
OPERATORS PLATFORM - CONTROLS	362
OPERATORS PLATFORM - RAIL WITHOUTCAB	364
OPERATORS PLATFORM - RAIL WITHCAB	366
OPERATORS PLATFORM	368
OPERATORS PLATFORM - RICE TRACK LADDER EXTENSION	370
SEAT - SIFRA TP14 ZA	372
SEAT - SIFRA GL14	374
SPRING SUPPORT	376
SPRING SUPPORT - WITHOUTCAB	378
CONTROL PANEL - HOUSING	380
CONTROL PANEL - GUARD LOWER	384
CONTROL PANEL - SOUND INSULATION	386
CONTROL PANEL - LEVER	388
CONTROL PANEL - LEVER WITH A.T.H.C	392
CONTROL PANEL - CABLE	394
CONTROL PANEL - CABLE WITH A.T.H.C	396
INSTRUMENTS - SUPPORT	398
INSTRUMENTS - INSTRUMENTS-SWITCH	400
INSTRUMENTS - JUNCTION	406
CAB - FRONT	408
CAB - REAR	410
CAB - RIGHT	412
CAB - LEFT	414
CAB - CONSOLE	416
CAB - MISCELLANEOUS	418
CAB - FLOOR	420
CAB - WIRING	422
AIR CONDITIONNER-COMPRESSOR - KYSOR	424
AIR CONDITIONNER-COMPRESSOR - KYSOR-BRACKET AND ASSEMBLING	426
AIR CONDITIONNER-CONDENSOR - KYSOR	428
AIR CONDITIONNER-CONDENSOR - BRACKET	432
AIR CONDITIONNER-EVAPORATOR - KYSOR	434
AIR CONDITIONNER-EVAPORATOR - KYSOR	436
STEERING COLUMN	438
STEERING COLUMN - HOUSING	440
STEERING COLUMN - ADJUSTING	442
STEERING PUMP	444
SAFETY BLOCK	446
REAR AXLE	448
REAR AXLE - IMPELLER HUB	450
REAR WHEELS	452
HYDRAULIC CIRCUIT - CONTAINER-PUMP-VALVE	454
HYDRAULIC CIRCUIT - REEL	456
HYDRAULIC CIRCUIT - TABLE LIFT	458
HYDRAULIC CIRCUIT - TABLE LIFT- WITH A.T.H.C	460
HYDRAULIC CIRCUIT - STEERING	464
HYDRAULIC CIRCUIT - TRACTION VARIATOR	468
HYDRAULIC CIRCUIT - REAR BEATER CLUTCH	470
HYDRAULIC CIRCUIT - DISCHARGE CHUTE	472
HYDRAULIC PUMP	476
CONTROL VALVE - UPPER COMPONENTS	478
CONTROL VALVE - LOWER COMPONENT	480
RAM FOR TRACTION	482
RAM FOR STEERING	484

TABLE OF CONTENT

RAM FOR TABLE LIFT - RIGHT	486
RAM FOR TABLE LIFT - LEFT	488
UNLOADER SPOUT ARRANGEMENTS	490
LIGHTING - FRONT	492
LIGHTING - LAMP	494
LIGHTING - LAMP- GERMANY	496
LIGHTING - REAR	498
LIGHTING - HARNESS- REAR	500
LIGHTING - SIGNALLING	502
LIGHTING - HAPPER SPOTLIGHT	504
LIGHTING - ROTATING LIGHT-S.E.V	506
LIGHTING - ROTAING LIGHT-HELLA	508
LIGHTING - FIELD LIGHTS	510
LIGHTING - SUPPORT (REFLECTOR)	512
LIGHTING - REAR	514
MIRRORS	516
TOOLS	518
TRANSFERS	520
TRANSFERS	522
WEIGHT FRAME AND WEIGHTS	526
WHEEL WEDGES	528
GUARDS - GERMANY	530
GUARDS - ELEVATOR	532
GUARDS - LEFT SIDE	534
ELEVATOR - RICE MACHINES .COWL. FUEL TANK	536
FANNING HILL - RICE MACHINES .COWL. FANNING HILL	538
CONCAVE - RICE MACHINE- TEETH WITH SPATULA	540
CONCAVE - RICE MACHINE- CONICAL TEETH	542
CYLINDER - RICE MACHINE- CONIC TEETH	544
CYLINDER - RICE MACHINE- TEETH WITH SPATULA	546
FRONT AXLE FINAL DRIVE-4 WHEEL DRIVE	548
REAR AXLE - RICE MACHINES .COWL. FUEL TANK	552
REAR AXLE - RICE MACHINES .COWL. FUEL TANK	556
FUEL TANK AND ATTACHMENTS - RICE MACHINES .COWL. FUEL TANK	558
WHEELS - RICE MACHINES .COWL. FUEL TANK	560
TRACK CHAIN	562
TRACK CHAIN	564
UNDERCARRIAGE	566
UNDERCARRIAGE	568
TRACK CHAIN - GUARDS RICE TRACK	570
KIT DRIVE RIGHT HAND FOR 5 ROWS CORN HEADER - CODE 510	572
CAB HEATING KIT - CODE 511	574
RAM FOR TABLE LIFT-3RD.RAM - CODE 512	576
RAM FOR TABLE LIFT-3RD.RAM - CODE 512	578
STRAWWALKER RISERS - CODE 517	580
KIT 3 LOWER SIEVES-DIAMETER 1/4,3/8,1/2. - CODE 524	582
GRAIN LOSS MONITOR	584
SHAFT SPEED MONITOR - CODE 540	588
HEIGHT CUT OFF INDICATOR KIT - CODE 562	594
FANNING MILL BLADES-SMALL SEED	596
MAIZE EQUIPMENT - CODE 545	598
CAB - CODE 563- 565	600



1-0010-090

MASSEY FERGUSON

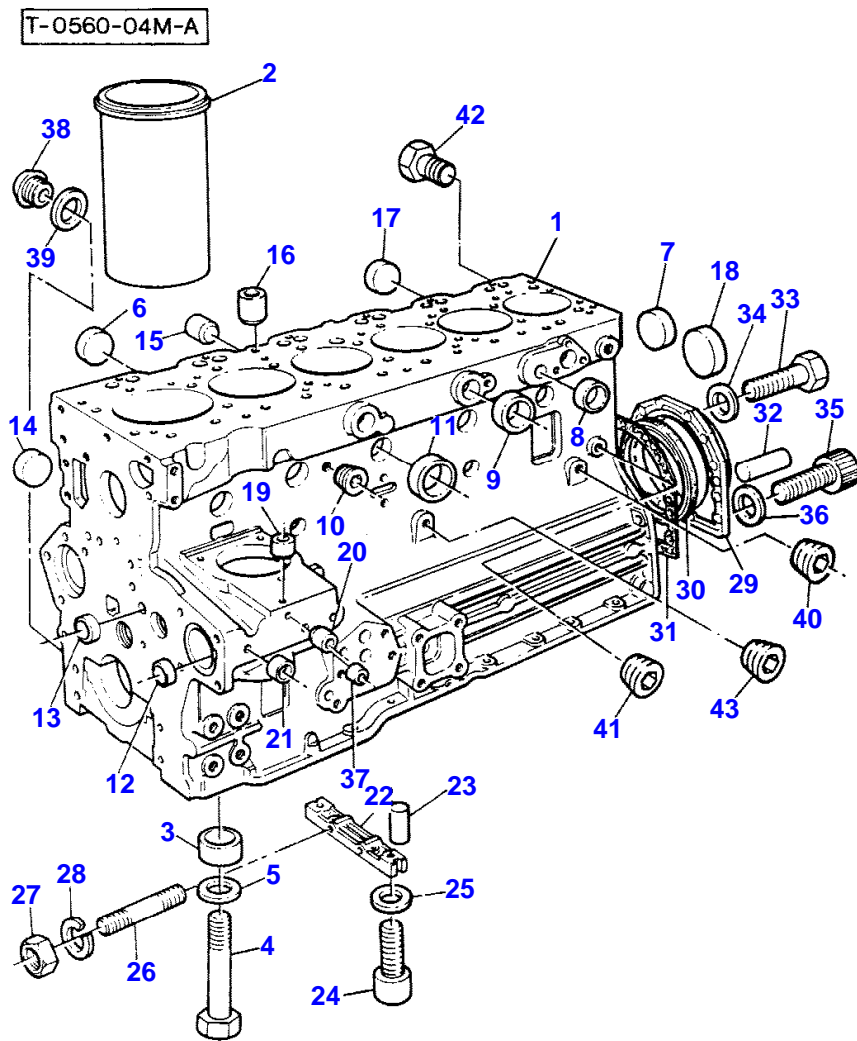
MF 810/815 COMBINES - 1637137

1637137

ENGINE AND ACCESSORIES - ENGINE . ROD . DRAIN

2

Item	Part Number	Qty	Description	Comments
				ENGINE . ROD . DRAIN
1	3375703M91	1	Engine	
2	3371689M91	1	Hydr Hose	
3	831497M1	2	O Ring	(2)
4		1	Hydr Hose	(2)
5	356446X1	1	Plug	
6	361444X1	1	Screw	
7	0920053	1	Washer	
8	360059X1	1	Tie	
9	271675M1	1	Clevis Pin	
10	358656X1	1	Nut	
11	0576150	1	Nut	
12	3044950M91	1	Lever	
13	3045157M91	1	Toggle	
14	0576150	1	Nut	
15	3044979M1	1	Stem	
16	0576150	1	Nut	
17	525396M1	1	Buckle	
18	338160X1	1	Nut	
19	3049619M1	1	Stem	
20	0576150	1	Nut	
21	3052849M1	1	Toggle	
22	3044960M91	1	Lever	
23	0576150	1	Nut	
24	3044956M91	1	Bearer	
25	353540X1	2	Screw Unf	
26	353517X1	2	Screw Unf	
27	0920053	2	Washer	
28	0920497	2	Washer	
29	3049017M91	1	Bearer	
30	195612M1	1	Pin	
31	0576150	1	Nut	
32	3044963M91	1	Lever	
33	354057X1	1	Pin	
34	3052849M1	1	Toggle	
35	0576150	1	Nut	
36	3049619M1	1	Stem	
37	338160X1	1	Nut	
38	525396M1	1	Buckle	
39	0576150	1	Nut	
40	3044979M1	1	Stem	
41	0576150	1	Nut	
42	3052849M1	1	Toggle	
43	0576150	1	Nut	
44	353756X1	1	Washer	
45	355848X1	1	Snpring	
46	3044952M91	1	Lever	
47	3052849M1	1	Toggle	
48	0576150	1	Nut	
49	3044982M1	1	Stem	
50	0576150	1	Nut	
51	0576150	1	Nut	
52	3052849M1	1	Toggle	
53	0576150	1	Nut	



Item	Part Number	Qty	Description	Comments
				A6.354.4 ENGINE
1	ZZ 50041	1	Kit,Cyl.Block	Repairs and replaces M7BA0441
2	31358393	6	Liner	Repairs and replaces 63621 (1) (A)
2	31358394	X	Liner	(B)
	31358398	X	Liner	Repairs and replaces 31358403 Thickness (+) 0.010" Thickness (+) 0.25MM
3	33142111	14	Thimble	(1)
4	32166329	14	Bolt	(1)
5		14	Washer	(E)
6	32418117	6	Plug	(1) Repairs and replaces 0650618
7	32418117	2	Plug	(1) Repairs and replaces 0650618
8	0650692	1	Plug	(1) Repairs and replaces 0650664
9	0650710	4	Plug	(1)
10		1	Plug	(1) (C)
11	32416116	5	Plug	(1) Repairs and replaces 32417155 Repairs and replaces 32418121
12	32417115	1	Plug	
13	0650566	2	Plug	
14	0650710	1	Plug	
15	32417133	1	Plug	
16	32417134	1	Plug	
17	32418117	6	Plug	Repairs and replaces 0650618
18	32416105	1	Plug	
19	32417134	1	Plug	
20	32417134	1	Plug	
21	32417127	2	Plug	
22	3627P011	1	Bridge Piece	Repairs and replaces 36277825 Repairs and replaces 36277833
23	32811408	2	Joint	(D)
24	2172514	2	Screw	Repairs and replaces 2176369
25	0920521	2	Washer	(D)
26	0826201	2	Stud	
27	0576002	2	Nut	
28	0920053	2	Washer	
29	4142V064	1	Housing	Repairs and replaces 4142V061 Repairs and replaces 4142V031 Repairs and replaces 37513851
30	2418F475	1	Seal	(29) Repairs and replaces 2415391
31	36817157	1	Joint	
32	0350009	2	Dowel	
33	0746211	10	Bolt	
34	0920003	10	Washer	
35	2172530	2	Capscrew	
36	33112111	2	Washer	
37	32417143	1	Plug	
38	32168232	4	Plug	Repairs and replaces 32168231
39	2411157	4	Washer	
40	2431131	1	Plug	
41	0650593	1	Plug	
42	32161357	1	Plug	Repairs and replaces 32161114
43	2431131	1	Plug	

(A)
PRESS FIT

(B)
SLIP FIT

(C)

MASSEY FERGUSON

MF 810/815 COMBINES - 1637137

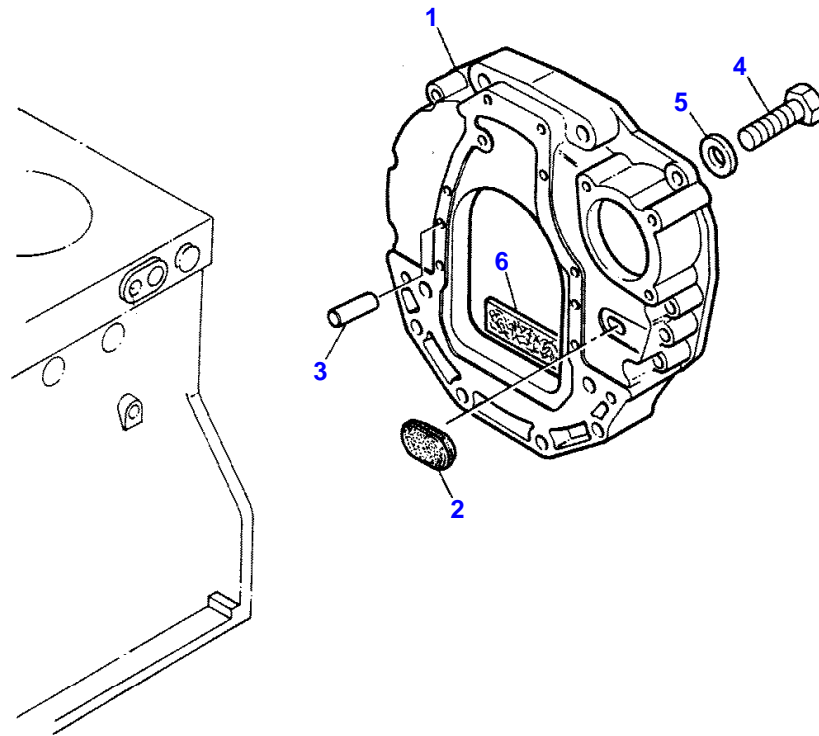
1637137

CYLINDER BLOCK - A6.354.4 ENGINE

6

Item	Part Number	Qty	Description	Comments
				REMOVE AND FIT LUBRICATING OIL COOLER PIPE CONNECTION
				(D) USED ONLY WITH 36277831/36277833. NOT REQUIRED WITH 36277825/3627P011.
				(E) NO LONGER REQUIRED ON THIS APPLICATION

T-0596-04M-A



MASSEY FERGUSON

MF 810/815 COMBINES - 1637137

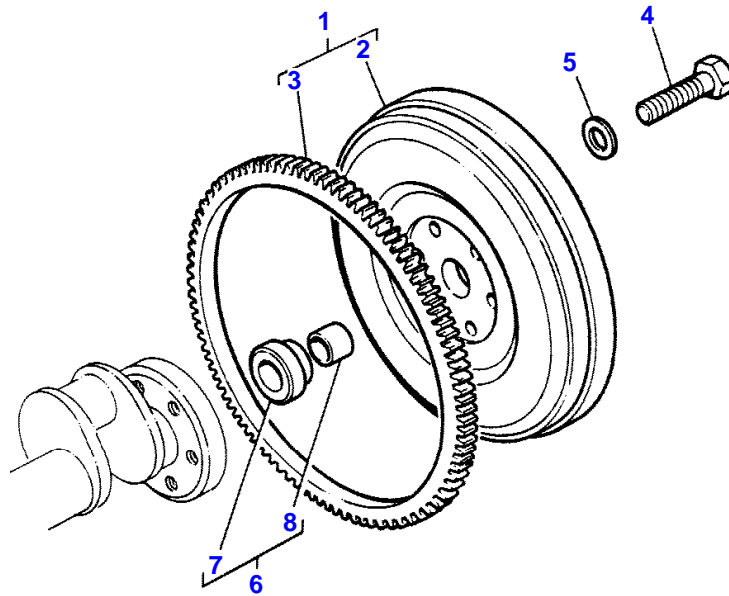
1637137

FLYWHEEL HOUSING - A6.354.4 ENGINE

10

Item	Part Number	Qty	Description	Comments
				A6.354.4 ENGINE
1	37147644	1	Plate	
2	37813113	1	Plug	
3	32455119	2	Dowel	
4	0746424	6	Bolt	
5	33115129	6	Washer	
6	36843154	1	Cover	(A)
				(A)
				WAS 36125305/0746253(3)/0920003(3)/0920053(3)

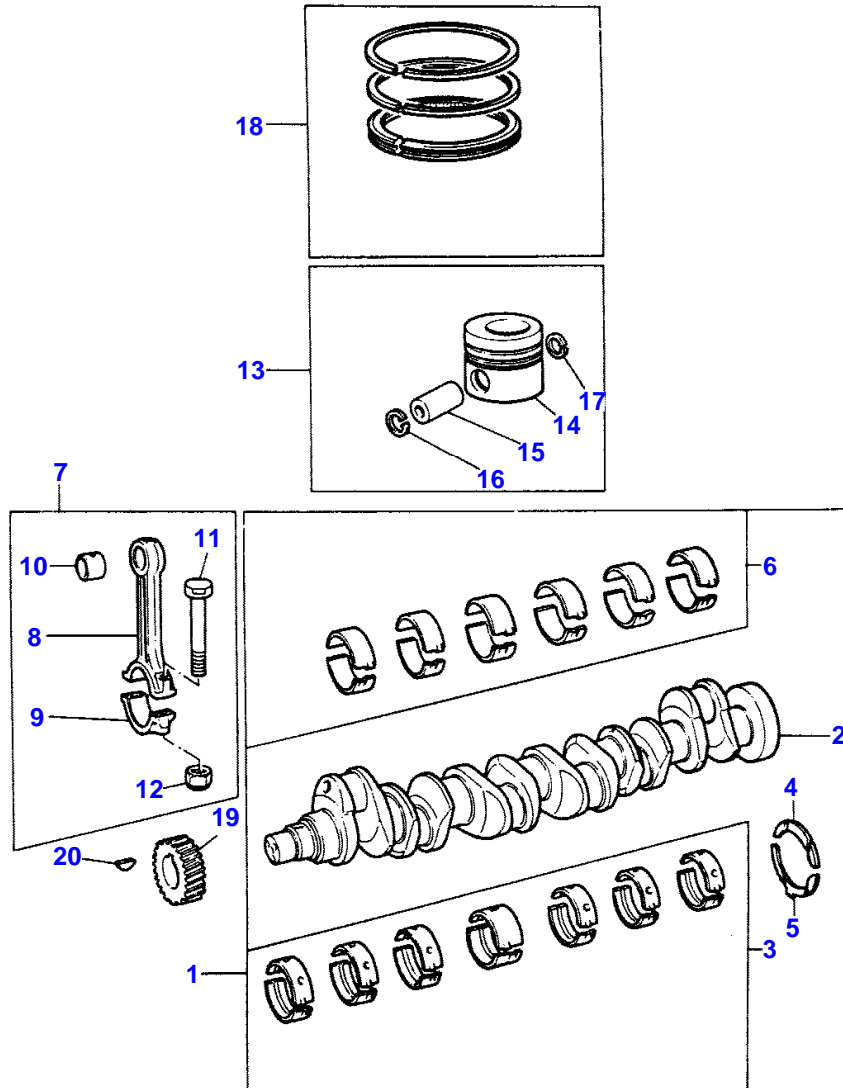
T-0600-02M-A



FLYWHEEL AND STARTER RING - A6.354.4 ENGINE

Item	Part Number	Qty	Description	Comments
				A6.354.4 ENGINE
1	41117291	1	Flywheel	Repairs and replaces 41117088
2		1	Flywheel	(1) Not serviced, order REF 1
3	0410264	1	Gear,Starterring	(1) Number of teeth/spines 122
4	0746853	6	Bolt	
5	33117127	6	Washer	Repairs and replaces 33117121
6	41425217	1	Adaptor	Repairs and replaces 41425216
7		1	Adaptor	(6) Not serviced, order REF.6
8	2513246	1	Bush	(6)

T-0563-01M-A



Buy Now



Our support email:

ebooklibonline@outlook.com