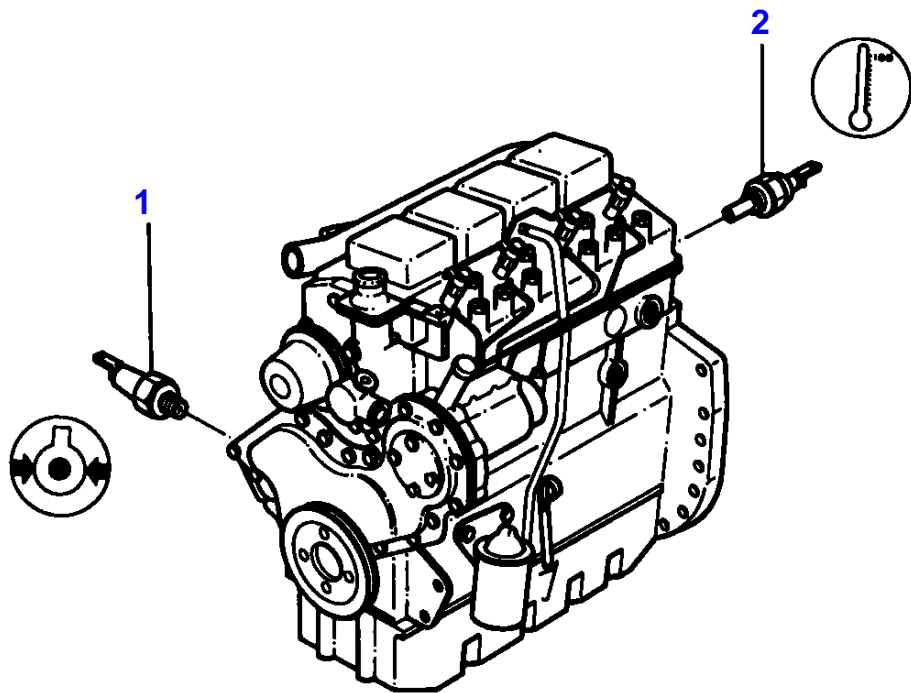


1-0020-004



MASSEY FERGUSON

MF 675 TRACTOR, |-> 1984 (FR) - 1637148

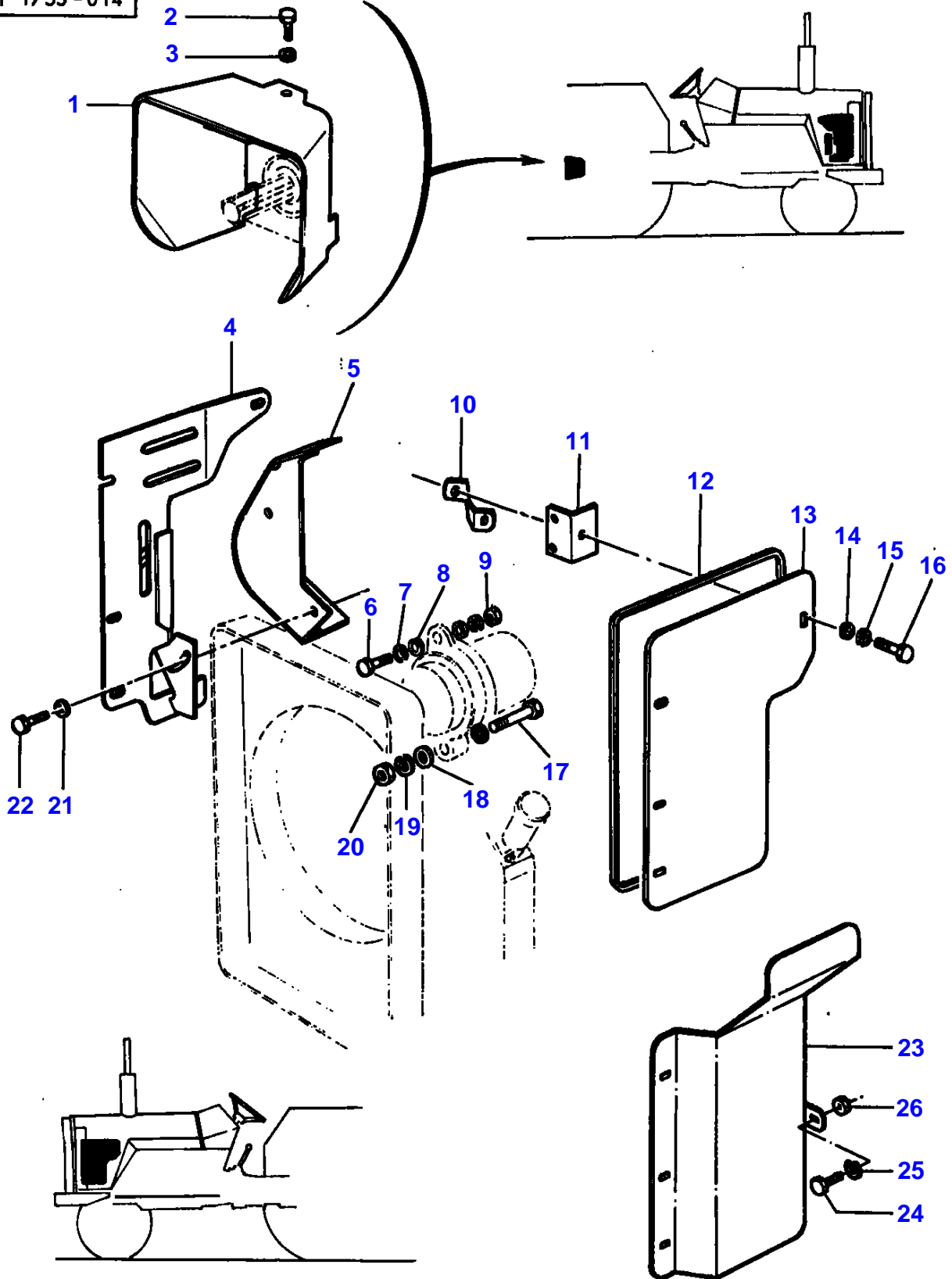
1637148

ENGINE ACCESSORIES

2

Item	Part Number	Qty	Description
1	1877721M92	1	Pressure Switch
2	1877731M92	1	Sender

1-1755-014

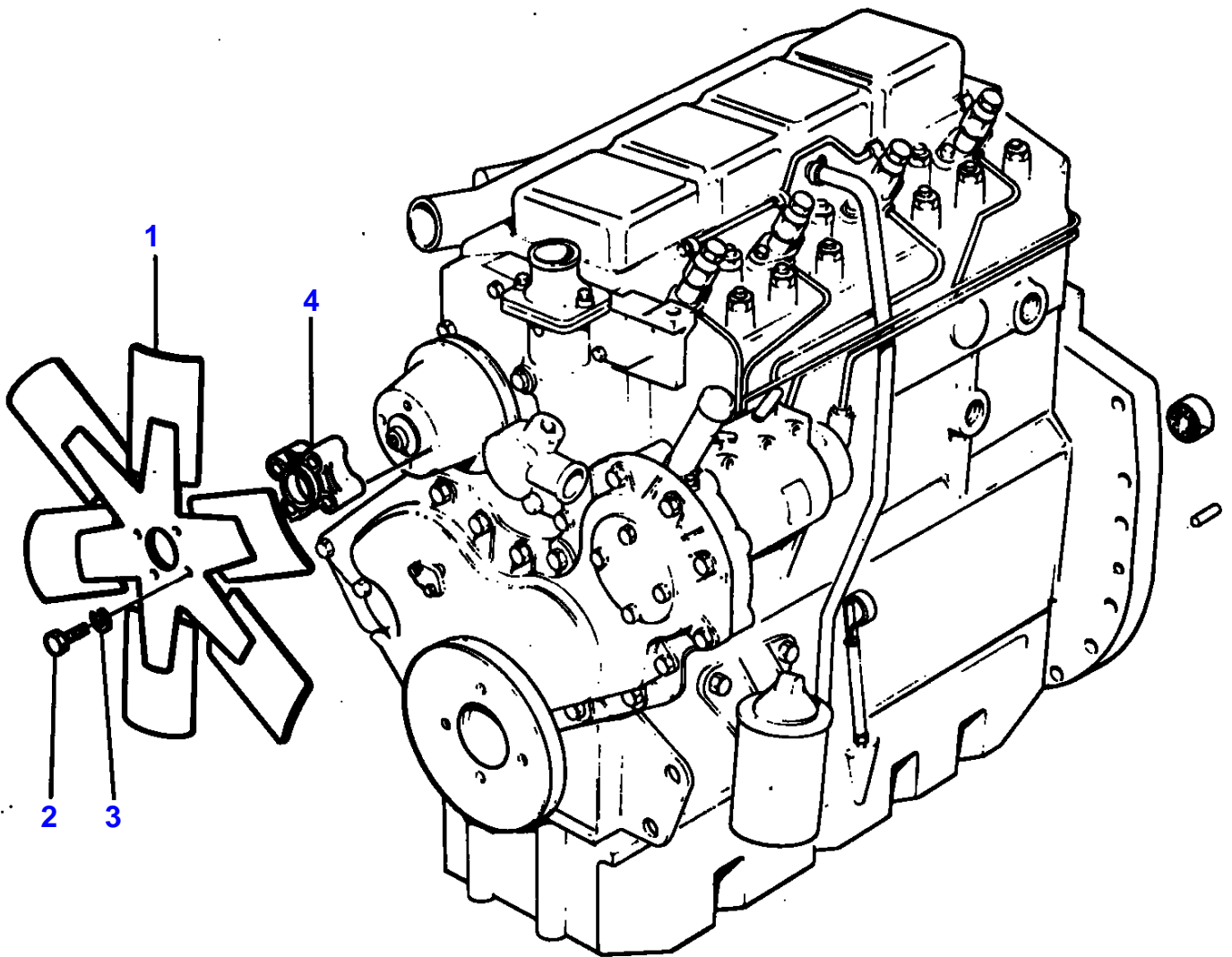


GUARDS PTO AND ALTERNATOR

Item	Part Number	Qty	Description	Comments
1	1869010M4	1	Cowl	Repairs and replaces 1869007M94
2	353557X1	1	Screw Unf	
3	353432X1	1	Lock Washer	
4	1681639M91	1	Guard	
5	1664769M92	1	Guard	
6	353682X1	1	Screw Unc	
7	353446X1	2	Lock Washer	
8	353755X1	2	Washer	
9	355565X1	1	Nut Unc	
10	1682336M91	1	Bracket	Up to Serial or Engine Number T 125038
11	1674343M91	1	Bracket	Up to Serial or Engine Number T 125038
12	1668722M1	1	Trim	
13	1674351M91	1	Guard	Up to Serial or Engine Number T 125038
14	355617X1	1	Washer	Up to Serial or Engine Number T 125038
15	391130X1	1	Washer	
16	353667X1	1	Screw Unc	Up to Serial or Engine Number T 125038
17	354267X1	1	Bolt Unc	
18	353756X1	2	Washer	
19	353434X1	1	Lock Washer	
20	355566X1	1	Nut Unc	
21	355617X1	3	Washer	
22	353501X1	2	Screw Unf	
23	1691166M91	1	Cowl	From Serial or Engine Number T 125039
24	353521X1	1	Bolt Unf	(A) From Serial or Engine Number T 125039
25	0920497	1	Washer	(A) From Serial or Engine Number T 125039
26	1683556M1	1	Spacer	(A) From Serial or Engine Number T 125039

(A)
WITHOUT CONDITIONED-AIR

1-0270-015



MASSEY FERGUSON

MF 675 TRACTOR, |-> 1984 (FR) - 1637148

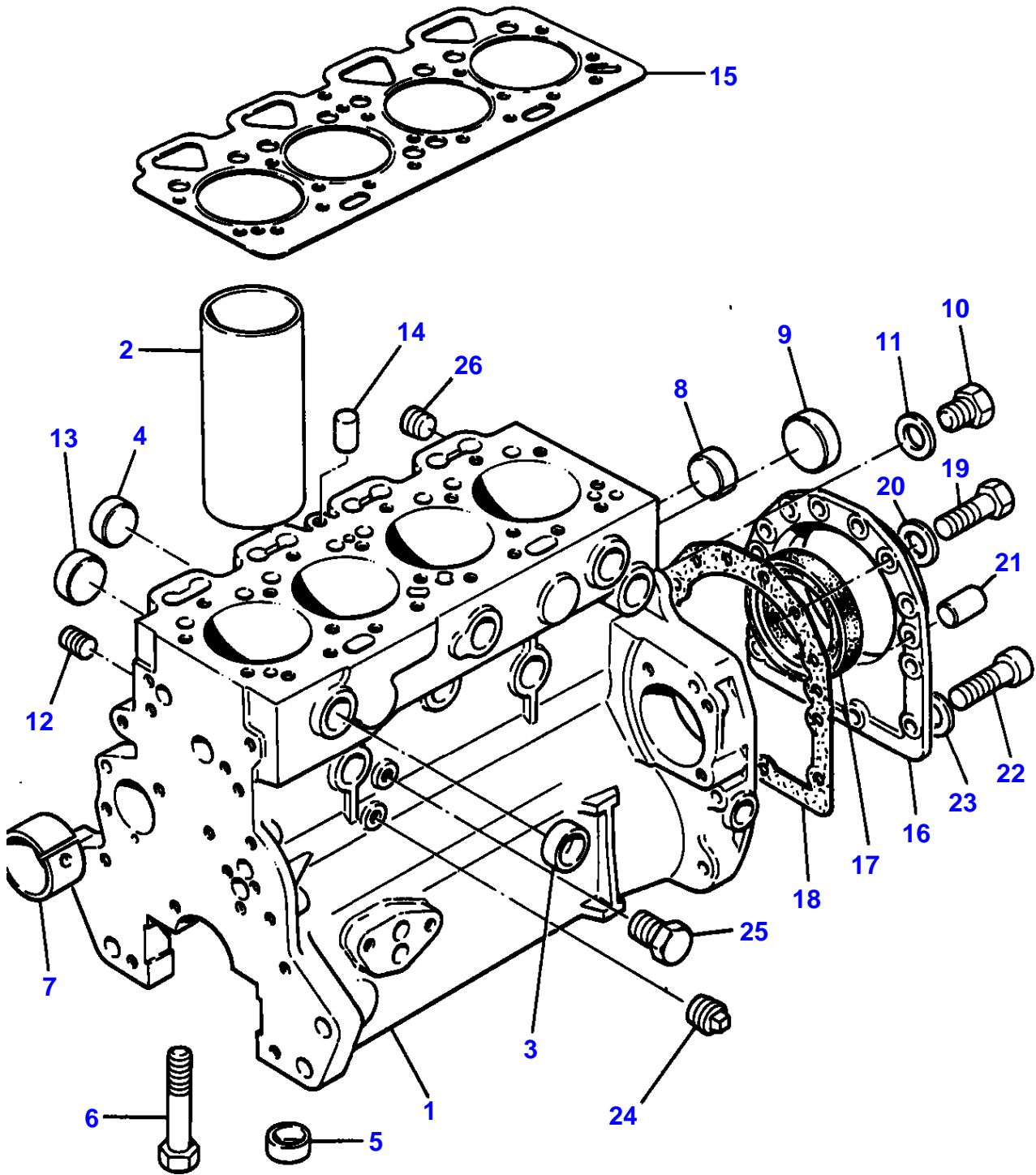
1637148

FAN

4

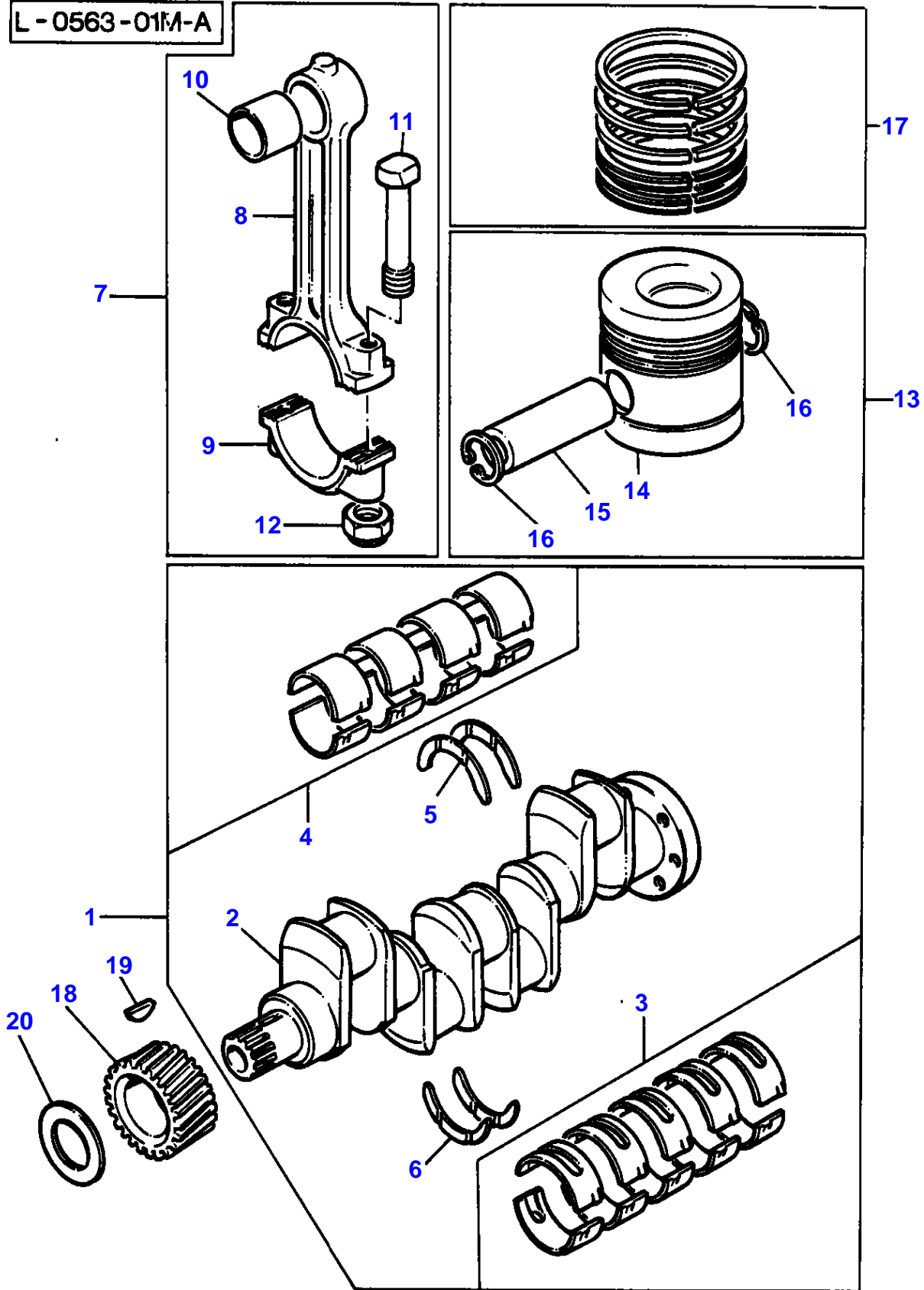
Item	Part Number	Qty	Description
1	1874995M92	1	Fan
2	0096237	4	Bolt
3	0920053	4	Washer
4	37413571	1	Extension

L-0560-01M-A



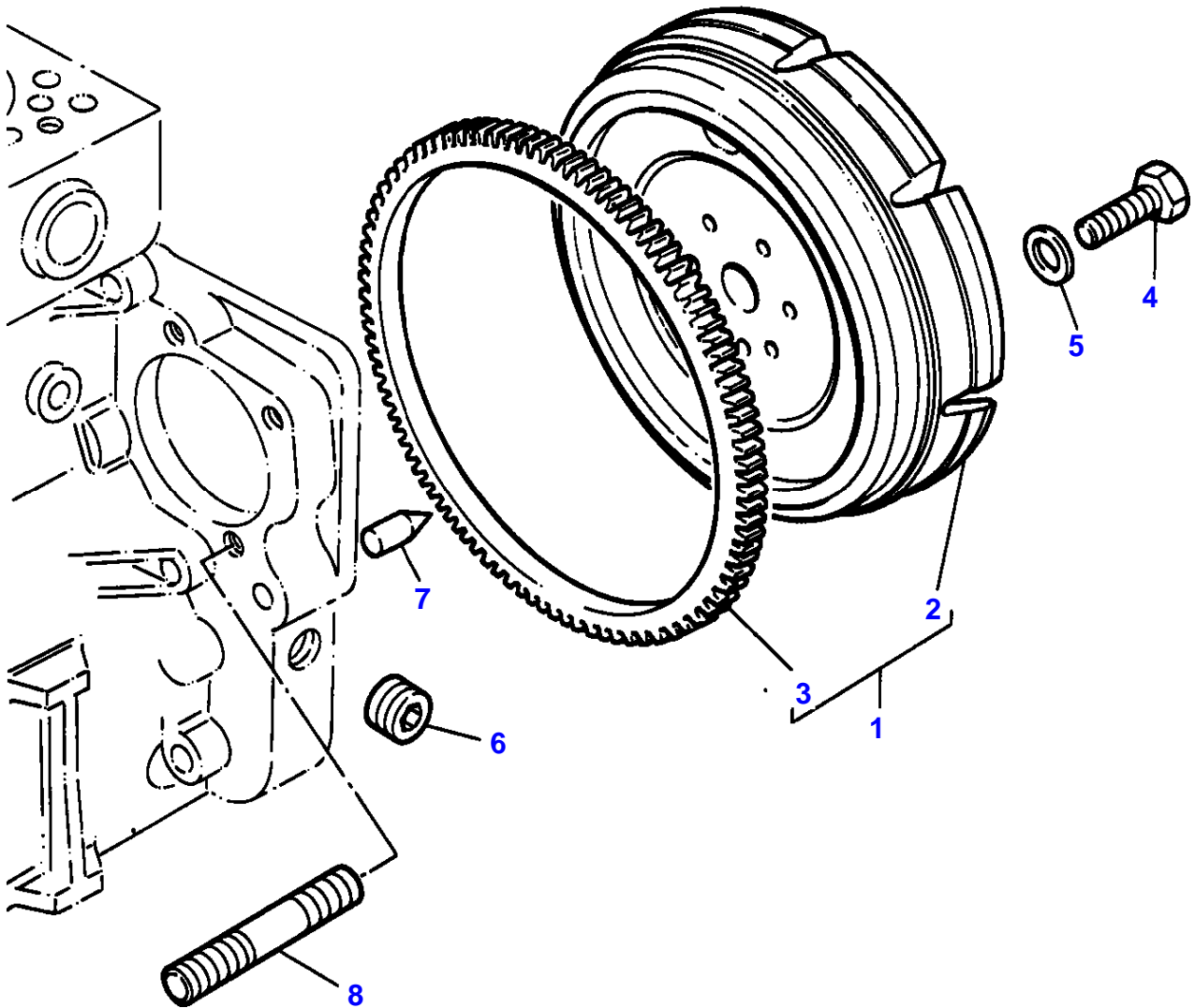
Item	Part Number	Qty	Description	Comments
				A4.236 ENGINE
1	ZZ 50144	1	Kit,Cyl.Block	(C,D) Repairs and replaces ZZ50079/81 Repairs and replaces ZZ50039/31 Repairs and replaces 61676
2	31358393	4	Liner	(1) (A,E)
2	31358394	X	Liner	(B,E)
	31358398	X	Liner	(E) Repairs and replaces 31358403 0.010" 0.25MM O/S
2	3135X031	4	Liner	(1) (A,F)
2	3135X032	X	Liner	(B,F)
3	0650710	6	Plug	(1) Repairs and replaces 0650563
4	32418117	4	Plug	(1) Repairs and replaces 0650618
5	33142111	10	Thimble	(1)
6	32166329	10	Bolt	(1)
7	31134164	1	Bush	(1) Repairs and replaces 31134163 Repairs and replaces 31134132
8	0650710	2	Plug	(1) Repairs and replaces 0650563
9	32416105	1	Plug	
10	0650582	1	Plug	
11	0920130	1	Washer	
12	32114501	1	Plug	
13	0650577	4	Plug	
14	32417134	1	Plug	
15	36812349	1	Head Gasket	
16	4142V064	1	Housing	Repairs and replaces 4142V061 Repairs and replaces 4142V031
17	2418F475	1	Seal	(16) Repairs and replaces 2415391
18	36817157	1	Joint	
19	0746211	10	Bolt	
20	0920003	10	Washer	
21	0350009	2	Dowel	
22	2172530	2	Capscrew	
23	33112111	2	Washer	
24	0650594	1	Plug	
25	32161114	2	Plug	Repairs and replaces 32161357 Repairs and replaces 32161114
26	0650588	2	Plug	
				(A) PRESS FIT
				(B) SLIP FIT
				(C) WAS ZZ50031 USE ZZ50039/32166337(2)/32166338(12)/3 2166339(8).
				(D) WAS ZZ50039 USE ZZ50081 WITH 36812352/33153157/211 6053/2184634(3)
				(E) USED ONLY WITH ZZ50039/ZZ50031/61676.
				(F) USED ONLY WITH ZZ50081.

L - 0563 - 01M-A



Item	Part Number	Qty	Description	Comments
				A4.236 ENGINE
1	ZZ 90082	1	Kit, Crankshaft	Repairs and replaces ZZ90083 Repairs and replaces U5BG0026 Repairs and replaces 68609
2		1	Crankshaft	(1) Not serviced, order REF.1
3	81558	1	Kit, Bearing	(1) (A)
3	81558A	X	Kit, Bearing	(A) Thickness (-)0.25MM Thickness (-)0.010"
3	81558B	X	Kit, Bearing	(A) Thickness (-)0.50MM Thickness (-)0.020"
3	81558C	X	Kit, Bearing	(A) Thickness (-)0.75MM Thickness (-)0.030"
4	85042	1	Kit, Bearing	(1) (A)
4	85042A	X	Kit, Bearing	(A) Thickness (-)0.25MM Thickness (-)0.010"
4	85042B	X	Kit, Bearing	(A) Thickness (-)0.50MM Thickness (-)0.020"
4	85042C	X	Kit, Bearing	(A) Thickness (-)0.75MM Thickness (-)0.030"
5	31137551	2	Thrust Washer	(1) Repairs and replaces 31137311
5	31137312	X	Thrust Washer	Thickness (+)0.19MM Thickness (+)0.0075"
6	31137561	2	Thrust Washer	(1) Repairs and replaces 31137321
6	31137322	X	Thrust Washer	Thickness (+)0.19MM Thickness (+)0.0075"
7	ZZ 90009	4	Kit, Conrod	Repairs and replaces M7BJ0015
8		1	Conrod	(7) Not serviced, order REF.7
9		1	Cap	(7) Not serviced, order REF.7
10	31134123	1	Bush	(7)
11	32762144	2	Bolt	(7)
12	33221328	2	Nut	(7)
13	68300	4	Kit, Piston	(B)
	68301	4	Kit, Piston	(C)
	68301C	X	Kit, Piston	(C) Thickness (+)0.75MM Thickness (+)0.030"
14		1	Piston	(13) Not serviced, order REF.13
15		1	Pin	(13) Not serviced, order REF.13
16	0170002	2	Circlip	(13)
17	41158041	4	Kit, Piston Ring	
	41158041C	X	Kit, Piston Ring	Thickness (+)0.75MM Thickness (+)0.030"
18	31171681	1	Gear,Crankshaft	28T
19	0500012	1	Woodruff Key	
20	33125416	1	Washer	
				(A) PRE-FINISHED
				(B) UNTOPPED
				(C) PRE-TOPPED

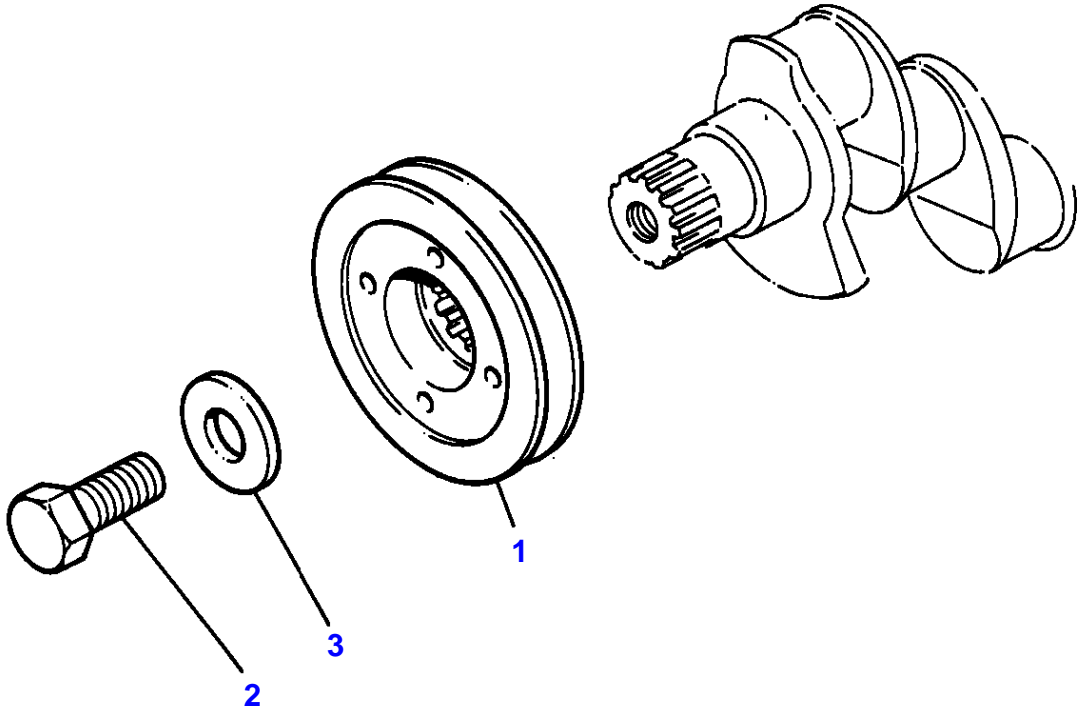
L-0600-01M-B



MASSEY FERGUSON**MF 675 TRACTOR, |-> 1984 (FR) - 1637148****1637148****FLYWHEEL AND STARTER RING - A4.236 ENGINE****7**

Item	Part Number	Qty	Description	Comments
				A4.236 ENGINE
1	41117084	1	Flywheel	
2		1	Flywheel	(1) Not serviced, order REF.1
3	0410236	1	Starter Ring	(1) 115T
4	2182122	6	Setscrew	
5	33117127	6	Washer	Repairs and replaces 33117121
6	0650588	1	Plug	
7	32452113	1	Pointer	
8	0826481	3	Stud	

L-0625-01M - A



MASSEY FERGUSON

MF 675 TRACTOR, |-> 1984 (FR) - 1637148

1637148

FRONT END DRIVE INPUT AND OUTPUT - A4.236 ENGINE

8

Item	Part Number	Qty	Description	Comments
				A4.236 ENGINE
1	31148714	1	Pulley,Crank	Repairs and replaces 31148713
2	32162331	1	Screw	Repairs and replaces 32162318
3	33125124	1	Washer	

Buy Now



Our support email:

ebooklibonline@outlook.com