

Page Title	Page Number
ENGINE AND ACCESSORIES	2
ENGINE ACCESSORIES	4
ENGINE ACCESSORIES	6
FAN	8
CYLINDER BLOCK - A4.318 ENGINE	10
CRANKSHAFT, PISTONS AND CONNECTING RODS - A4.318 ENGINE	12
FLYWHEEL AND STARTER RING - A4.318 ENGINE	14
FRONT END DRIVE INPUT AND OUTPUT - A4.318 ENGINE	16
CYLINDER HEAD - A4.318 ENGINE	18
WATER OUTLET AND INLET - A4.318 ENGINE	20
ENGINE LIFTING - A4.318 ENGINE	22
ROCKER SHAFT - A4.318 ENGINE	24
INDUCTION MANIFOLD - A4.318 ENGINE	26
EXHAUST MANIFOLD - A4.318 ENGINE	28
COLD START SYSTEM - A4.318 ENGINE	30
TIMING GEAR AND CAMSHAFT - A4.318 ENGINE	32
LUBRICATING OIL FILLER AND BREATHER - A4.318 ENGINE	34
BALANCER UNIT - A4.318 ENGINE	36
LUBRICATING OIL SUMP - A4.318 ENGINE	38
LUBRICATING OIL FILTER AND INTEGRAL COOLER - A4.318 ENGINE	40
WATER PUMP, THERMOSTAT AND HEAT EXCHANGER - A4.318 ENGINE	42
LOW PRESSURE FUEL SYSTEM - A4.318 ENGINE	44
FUEL INJECTION EQUIPMENT (DIESEL) - A4.318 ENGINE	48
GEAR DRIVE AUXILIARY DRIVE OPTIONS - A4.318 ENGINE	50
LUBRICATING OIL PUMP AND DELIVERY HOUSING - A4.318 ENGINE	52
JOINTS AND GASKETS-TOP SERVICE KIT - A4.318 ENGINE	54
JOINTS AND GASKETS-BOTTOM SERVICE KIT - A4.318 ENGINE	56
BATTERY	58
BATTERY	60
BATTERY	62
BATTERY	64
ALTERNATOR-MOTOROLA	66
ALTERNATOR-LUCAS	68
STARTER-LUCAS	70
STARTER - PERKINS	72
FUEL TANK AND ATTACHMENTS	74
AIR FILTER - EQUIPMENT	78
AIR FILTER	80
MUFFLER VERTICAL	82
MUFFLER VERTICAL - SUEDE	84
MUFFLER VERTICAL - AUSTRALIA	86
COOLING SYSTEM	88
THROTTLE CONTROLS - HAND	90
THROTTLE CONTROLS - FOOT	92
THROTTLE CONTROLS - PULL STOP	94
SINGLE CLUTCH	96
CLUTCH PEDAL AND LINKAGE	98
CLUTCH PEDAL AND LINKAGE	100
12 SPEED TRANSMISSION-SHIFT CONTROL - WITH CAB	102
12 SPEED TRANSMISSION-FORK AND GEAR SHIFTRAIL - SYNCHRO- ZF	104
12 SPEED TRANSMISSION-HOUSING - SYNCHRO- ZF	106
12 SPEED TRANSMISSION-INPUTSHAFT - SYNCHRO- ZF	108
12 SPEED TRANSMISSION-COUNTERSHAFT - SYNCHRO- ZF- LOW RATIO	110

12 SPEED TRANSMISSION-MAIN SHAFT - SYNCHRO- ZF- UP TO SERIAL NUL166...	112
IPTO-PIPES AND COVER - WITH IPTO	114
TRANSMISSION-SHIFT CONTROL - MULTIPOWER	116
MULTIPOWER TRANSMISSION-CONTROL	118
MULTIPOWER CONSTANTMESH TRANSMISSION-FORK AND GEAR SHIFTRAIL - SYNCHRO- ZF	120
MULTIPOWER TRANSMISSION-CONTROL	122
MULTIPOWER TRANSMISSION-HOUSING - SYNCHRO- ZF	124
MULTIPOWER CONSTANTMESH TRANSMISSION-INPUTSHAFT - SYNCHRO- ZF	126
MULTIPOWER CONSTANTMESH TRANSMISSION-MAIN SHAFT - SYNCHRO- ZF- UP TO SERIAL NUL166...	128
SYNCHRO - ZF MULTIPOWER TRANSMISSION	130
MULTIPOWER TRANSMISSION-COUNTERSHAFT - SYNCHRO- ZF- HIGH RATIO	132
EPICYCLIC UNIT-HEAVY DUTY	134
PTO-DRIVE MECHANISM-TWO SPEED	136
PTO-DRIVE MECHANISM-TWO SPEED - POWER TAKE-OFF LONG SHAFT	138
IPTO-CLUTCH AND VALVES - HIGH FLOW	140
PTO-CONTROL	144
REAR AXLE-SPACER - 2 WHEEL DRIVE	146
REAR AXLE CENTRE HOUSING	148
REAR AXLE-ATTACHMENTS	150
REAR AXLE-DIFFERENTIAL	152
REAR AXLE-DIFFERENTIAL LOCK MECHANISM	154
REAR AXLE- DIFFERENTIAL LOCK PEDAL	156
REAR AXLE-HOUSING	158
DISC BRAKES	160
HYDRAULIC BRAKE CONTROL-PEDAL	162
HYDRAULIC BRAKE CONTROL-PIPING	164
MAIN CYLINDER BRAKE	166
BRAKE CYLINDER	168
HANDBRAKE - LEFT SIDE	170
HANDBRAKE-LINKAGE - LEFT SIDE	172
REAR WHEELS - WEIGHT	174
REAR WHEELS - 2 WHEEL DRIVE	176
REAR WHEELS - 12X38	178
REAR WHEELS	180
POWER ASSISTED VARIABLE TRACK WHEEL	182
POWER ASSISTED VARIABLE TRACK WHEEL	184
POWER ASSISTED VARIABLE TRACK WHEEL	186
FRONT WHEELS-2 WHEEL DRIVE	188
FRONT WHEELS-2 WHEEL DRIVE	190
FRONT WHEELS-2 WHEEL DRIVE	192
FRONT WHEELS-2 WHEEL DRIVE	194
FRONT WHEELS-4 WHEEL DRIVE	196
FRONT WHEELS-4 WHEEL DRIVE	198
FRONT WHEELS-4 WHEEL DRIVE - POWER ASSISTED VARIABLE TRACK WHEELS	200
FRONT AXLE - WHEEL HUB	202
FRONT AXLE-2 WHEEL DRIVE	204
AXLE SUPPORT	206
HYDROSTATIC- STEERING - TO 36 DEGREE- STEERING WHEEL	208
STEERING UNIT-ORBITROL DANFOSS	210
STEERING HYDRAULIC LINES	212
HYDROSTATIC STEERING-2 WHEEL DRIVE	214
HYDROSTATIC STEERING-2 WHEEL DRIVE - WITHOUT CONDITIONED AIR	216
HYDROSTATIC- STEERING-4 WHEEL DRIVE	218

TABLE OF CONTENT

HYDROSTATIC STEERING-4 WHEEL DRIVE	210
HYDROSTATIC- STEERING-4 WHEEL DRIVE - OIL COOLER	220
STEERING PUMP-AIR EQUIPEMENT	222
STEERING CYLINDER-2 WHEEL DRIVE	224
STEERING CYLINDER-4 WHEEL DRIVE	226
STEERING LINKAGE-2 WHEEL DRIVE	228
HYDRAULIC PUMP DRIVE	230
HYDRAULIC PUMP-DUAL-AIR EQUIPMENT	232
INTERNAL LINES - WITH AUXILIARY PUMP	234
HYDRAULIC LINE - 2 WHEEL DRIVE	236
HYDRAULIC LINE - 4 WHEELS DRIVE	238
INTERNAL LINES - 12 SPEED- 2 WHEEL DRIVE	240
INTERNAL LINES - 12 SPEED 4 WHEEL DRIVE	242
INTERNAL LINES - MULTI POWER	244
HYDRAULIC VALVE - 12 SPEED 4 WHEEL DRIVE	246
HYDRAULIC VALVE - MULTI-POWER	248
OIL COOLER	250
OIL COOLER - HYDRAULIC LINES-4 WHEEL DRIVE- 12 SPEED AND MULTIP OWER TRANSMISSION	252
OIL COOLER - HYDRAULIC LINES-2 WHEEL DRIVE-MULTIPOWER TRANSMIS.	254
OIL COOLER - HYDRAULIC LINES-2 WHEEL DRIVE-12 SPEED TRANSMISS	256
TRAILOR BRAKE LINES	258
TRAILER BRAKE VALVE	260
DISTRIBUTOR - KONTAK	262
DISTRIBUTOR - KONTAK-DISTRIBUTOR CONTROL- FROM NO T270051	264
DISTRIBUTOR - KONTAK-AAA	266
DISTRIBUTOR - KONTAK-DISTRIBUTOR CONTROL-AAA- FROM NO T270051	268
DISTRIBUTOR - KONTAK-REAR HYDRAULIC LINES	270
DISTRIBUTOR - KONTAK-REAR HYDRAULIC LINES-AAA	272
DISTRIBUTOR - KONTAK-REAR SUPPORT- CAP-TRANSFER	274
DISTRIBUTOR - KONTAK-DELIVERY COMBINED	276
DISTRIBUTOR - KONTAK-DELIVERY SINGLE	278
DISTRIBUTOR - KONTAK-DELIVERY SINGLE-AAA	280
DISTRIBUTOR - KONTAK-TRAILOR BRAKE DELIVERY	282
DISTRIBUTOR - KONTAK-TRAILOR BRAKE DELIVERY- FRENCH	284
DISTRIBUTOR - KONTAK-HOSE FOR TILTING TRAILER- WITHOUT HYDRAULIC MK 3	286
BREATHING FILTER	288
HYDRAULIC PUMP-BODY SHAFT PISTON - HIGH FLOW-IPTO	290
HYDRAULIC PUMP-OSCILLATOR VALVE	292
HYDRAULIC PUMP-STRAINER UNIT - HIGH FLOW-IPTO	294
HYDRAULIC PUMP-PRESSURE CONTROL VALVE	296
HYDRAULIC LIFT COVER	298
LIFT ARMS - RAM	302
LIFT ARMS	304
LIFT ARMS - DRAFT AND POSITION CONTROLS	306
QUADRANT SUPPORT - DRIVE SHAFT	308
QUADRANT SUPPORT	310
DRAFT AND POSITION CONTROLS	312
DRAFT AND POSITION CONTROLS - EXTERNAL CONTROL- UP TO SERIAL NU T264036	314
DRAFT AND POSITION CONTROLS - EXTERNAL CONTROL- FROM SERIAL T264037	316
RESPONSE CONTROLS - WHITHOUT HYDRAULIC MKIIIA	318
RESPONSE CONTROLS - CONTROL	320
RESPONSE CONTROLS - HYDRAULIC MKIIIA	322
RESPONSE CONTROLS - HYDRAULIC MKIIIA	324

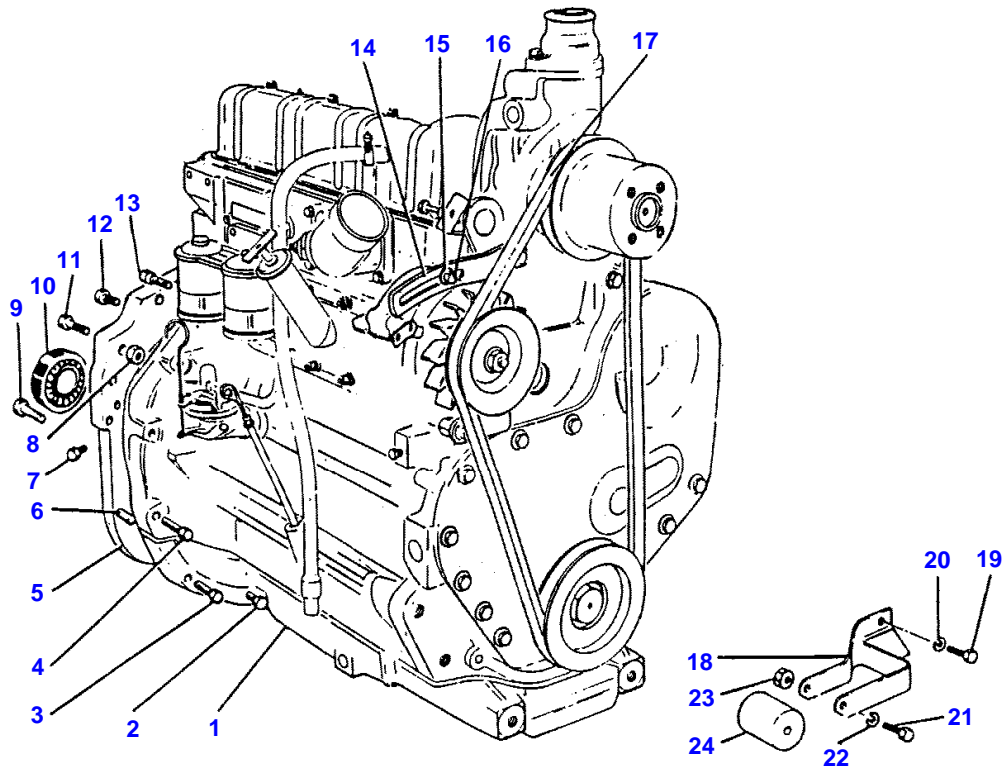
TABLE OF CONTENT

RESPONSE CONTROLS - SELECTION VALVE	326
RESPONSE CONTROLS - CABLE CONTROL	328
TOP LINKS - UPPER LINK-SCALE	330
TOP LINKS - UPPER LINK-SCALE	332
TOP LINKS - UPPER LINK-SCALE- WHIT POWER TAKE-OFF LONG SHAFT	334
LOWER LINKS - AUTOMATIC HOOK	336
LOWER LINKS - LEVELLING BOX	338
LOWER LINKS - LEVELLING BOX DRIVE	340
LOWER LINKS - BOTTOM BAR	342
LOWER LINKS - BOTTOM BAR	344
LOWER LINKS - BOTTOM BAR- WITH POWER TAKE-OFF LONG SHAFT	346
LOWER LINKS - BOTTOM BAR-WITH AUTOMATIC HOOK	348
LOWER LINKS - CHAIN	350
LOWER LINKS - ADJUSTABLE COUPLING	352
STABILIZERS	354
STABILIZERS - WITH 1 CYLINDER	356
STABILIZERS - POWER TAKE-OFF LONG SHAFT	358
HYDRAULIC LIFT CYLINDER - O 25 MM	360
HYDRAULIC LIFT CYLINDER - DIAMETER 25 MM	362
HYDRAULIC LIFT CYLINDER	364
HYDRAULIC LIFT CYLINDER - WITH 1 CYLINDER	366
HYDRAULIC LIFT CYLINDER - POWER TAKE-OFF LONG SHAFT	368
SWINGING DRAWBAR - DRAWBAR FRAME	370
SWINGING DRAWBAR	372
SWINGING DRAWBAR	374
HITCH	376
HITCH-LEMOINE	378
TOP LINKS - UPPER LINK-SCALE- WITH STANDARD HITCH YLO	380
TOP LINKS - UPPER LINK-SCALE- WITH STANDARD HITCH YLO	382
STABILIZERS - WITH LINK YLO	384
HYDRAULIC LIFT CYLINDER - WITH LINK YLO	386
FRONT HITCH	388
WEIGHT	390
SHEET METAL-GRILLE	392
SHEET METAL-HOOD	394
TRACTOR CAB-CAB MOUNTINGS AND STEP / STAIRS	398
TRACTOR CAB-REAR PANELS CAB	402
TRACTOR CAB-REAR PANELS CAB - UNITED STATES	404
TRANSFERS	406
SPEED CHARTS	408
SEAT-GRAMMER	410
SEAT-GRAMMER - PLATFORM	412
SHEET METAL-INSTRUMENT PANEL - HOOD BRACKET AND INSTRUMENT PANEL	416
SHEET METAL-INSTRUMENT PANEL	418
SHEET METAL-INSTRUMENT PANEL - 2 WHEEL DRIVE	420
TRACTOR CAB - FENDERS-HANDBRAKE LEFT SIDE	422
TRACTOR CAB - FRAME	424
TRACTOR CAB - ROOF	428
TRACTOR CAB-VENTILATION	432
AIR CONDITIONER	434
AIR CONDITIONER	436
AIR CONDITIONER - COMPRESSOR	438
TRACTOR CAB - BEARER-FAN-HEATER	440
TRACTOR CAB - FAN-HEATER	442

## TABLE OF CONTENT

00

TRACTOR CAB-CAB HEATER	446
TRACTOR CAB-WINDOWS	448
TRACTOR CAB-WINDOWS - REAR	450
TRACTOR CAB-RADIO INSTALLATION	452
TRACTOR CAB-CAB DOOR - WINDOW	454
TRACTOR CAB-CAB DOOR	456
TRACTOR CAB-CAB INSULATION - ROOF	458
TRACTOR CAB-CAB INSULATION - WITH HANDBRAKE LEFT SIDE	460
TRACTOR CAB - CAB MISCELLANEOUS	462
TOOL BOX	464
SHEET METAL-FLAT TOP FENDERS - FENDERS ET PLAFORM-HANDBRAKE LEFT SIDE	466
SAFETY FRAME - WITH PLATFORM	468
SAFETY FRAME - 2 WHEEL DRIVE	470
TRACTOR CAB - LICENSE PLATE- FRANCE	472
FRONT LIGHTING EQUIPMENT	474
WIRING - ENGINE	478
WIRING - ENGINE	480
WIRING - ENGINE- TRACTOR WITH PLATFORM	482
WIRING - PANEL WIRING	484
WIRING - REAR- CAB	486
REAR LIGHTING EQUIPMENT - AAA	488
REAR LIGHTING EQUIPMENT - UNITED STATES	490
REAR LIGHTING EQUIPMENT - REAR LIGHT	492
REAR LIGHTING EQUIPMENT - WORKING LIGHT- CAB	494
REAR LIGHTING EQUIPMENT	496
REAR LIGHTING EQUIPMENT - WITH FENDER EXTENSION	498
REAR LIGHTING EQUIPMENT - PLATFORM- UNITED STATES	500
REAR LIGHTING EQUIPMENT - CAB- UNITED STATES	502
REAR LIGHTING EQUIPMENT - UNITED-STADES	504
LIGHTING KITS	508
TRACTOR CAB-CAB MISCELLANEOUS	510
FRONT AXLE HYDRAULIC CONTROL	512
ELECTRICAL WIRING - FRONT AXLE HYDRAULIC CONTROL	514
TRANSFER GEAR BOX-ASSEMBLING	516
TRANSFER GEAR BOX-GEARS	518
GUARD AND TRANSMISSION SHAFT	522
FRONT LIVE AXLE - HOUSING-DIFFERENTIAL-CAT 2,5	524
FRONT LIVE AXLE - REDUCER-CAT 2,5	526
FRONT AXLE FINAL DRIVE-4 WHEEL DRIVE - CAT 2,5	528

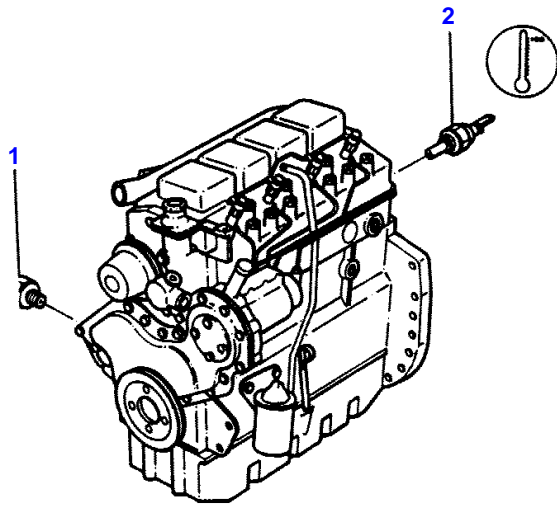


1-0010-075



**MASSEY FERGUSON****MF 698 TRACTOR, |-> 1984 (FR) - 1637150****1637150****ENGINE AND ACCESSORIES****2**

<b>Item</b>	<b>Part Number</b>	<b>Qty</b>	<b>Description</b>	<b>Comments</b>
1	1690161M91	1	Engine	A4.318
2	353727X1	2	Screw Unc	
3	362481X1	2	Screw	
4	353714X1	5	Bolt Unc	
5	1612644M2	1	Plate	
6	191314M1	4	Centraliser	
7	32114108	1	Plug	
8	355645X1	1	Nut Unc	
9	362481X1	1	Screw	
10	828123M1	1	Bearing Assy	
11	362491X1	1	Screw	
12	365873X1	13	Screw	
13	362485X1	3	Screw	
14	1670173M1	1	Tensioner	
15	353770X1	1	Washer	
16	353678X1	1	Screw Unc	
17	1686615M91	1	Kit, Belt	Repairs and replaces 1690694M1
18	1614871M91	1	Bracket	
19	353538X1	2	Screw Unf	
20	353434X1	2	Lock Washer	
21	353898X1	1	Screw	
22	353434X1	1	Lock Washer	
23	355566X1	1	Nut Unc	
24	1618008M1	1	Spacer	



1-0020-004



MASSEY FERGUSON

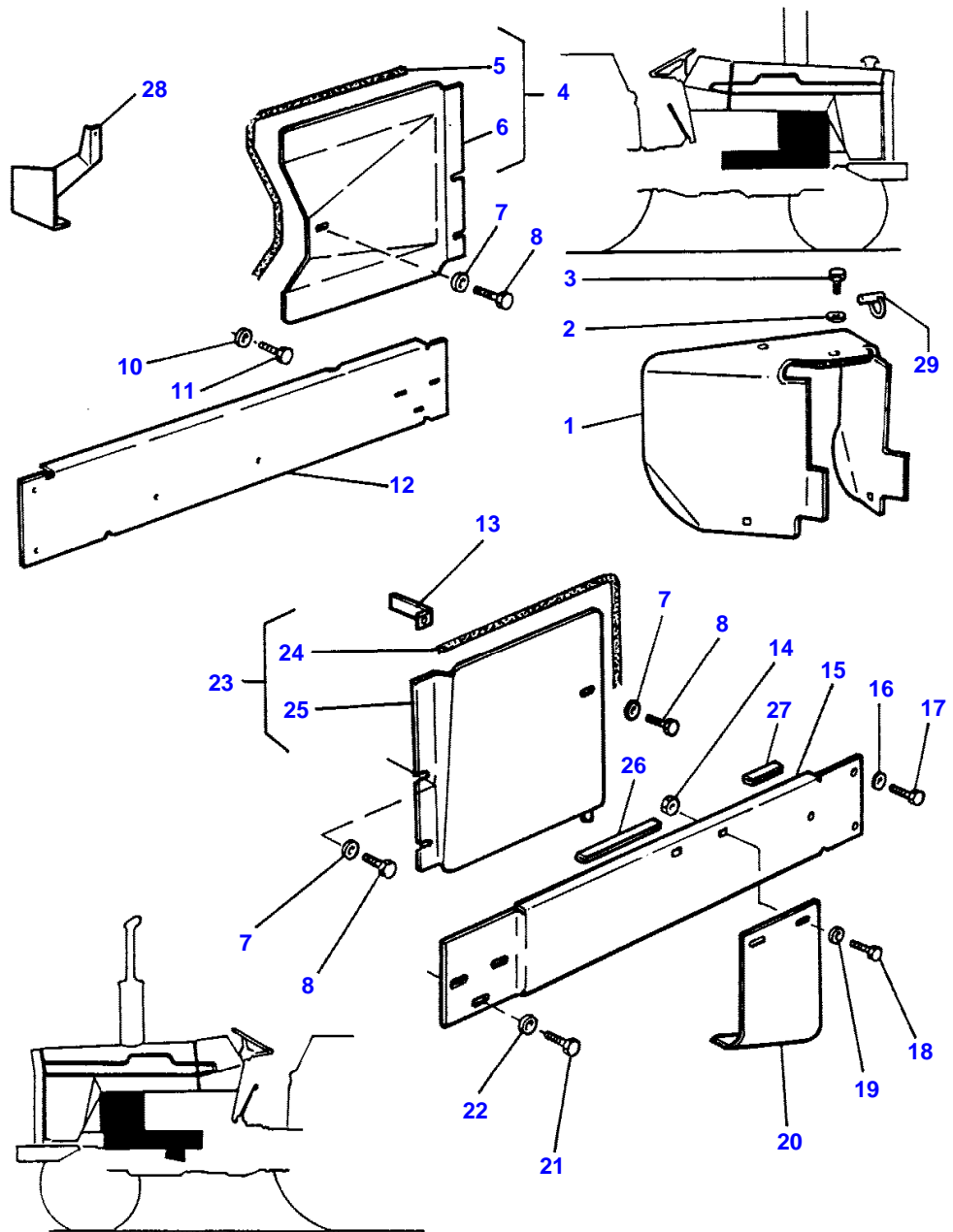
MF 698 TRACTOR, |-> 1984 (FR) - 1637150

1637150

ENGINE ACCESSORIES

4

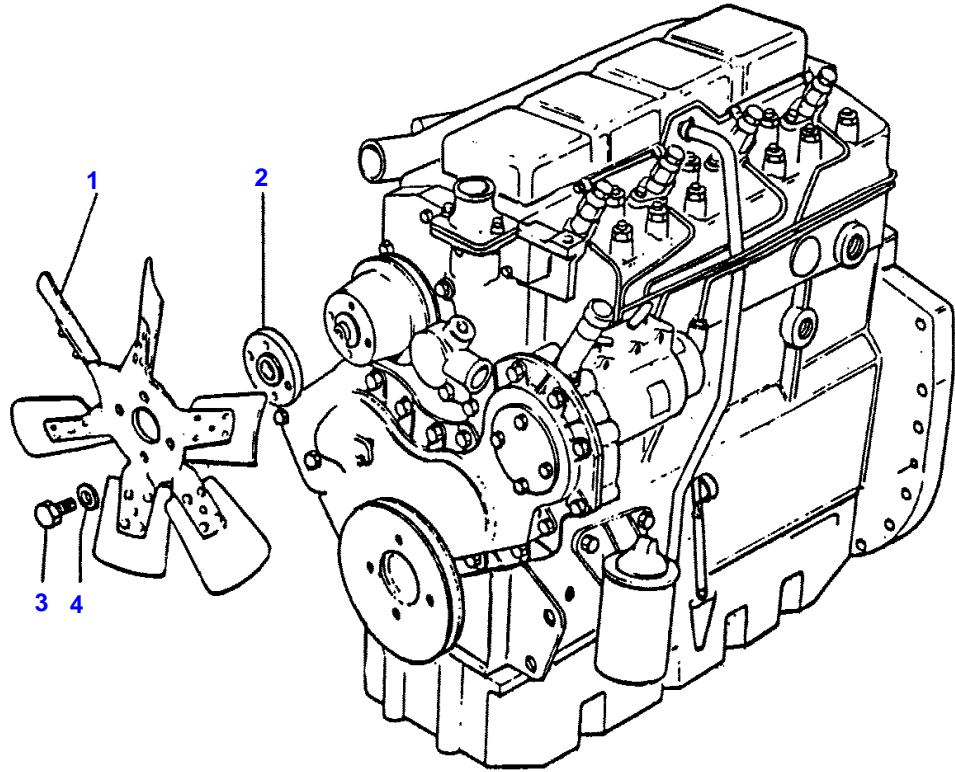
Item	Part Number	Qty	Description
1	1877721M92	1	Pressure Switch
2	1877731M92	1	Sender



1-0020-009

**MASSEY FERGUSON****MF 698 TRACTOR, |-> 1984 (FR) - 1637150****1637150****ENGINE ACCESSORIES****6**

<b>Item</b>	<b>Part Number</b>	<b>Qty</b>	<b>Description</b>	<b>Comments</b>
1	1869010M4	1	Cowl	Repairs and replaces 1869007M94
	1690258M91	1	Guard	For United States of America
2	353557X1	1	Screw Unf	
3	353432X1	1	Lock Washer	
4	1681592M93	1	Cowl	Right Hand
5	1681600M1	1	Profile	(4) Right Hand
6		1	Cowl	(4) Not serviced, order REF NO 4
7	353754X1	3	Washer	
8	353501X1	3	Screw Unf	
10	353756X1	1	Washer	
11	354228X1	1	Screw Unf	
12	1675327M93	1	Runner	Right Hand
13	1670210M92	1	Bearer	Left Hand
14	353437X1	2	Nut Unf	
15	1675295M5	1	Runner	Left Hand
16	353757X1	4	Washer	
17	362469X1	4	Bolt	
18	359985X1	2	Bolt Unf	
19	353773X1	2	Washer	
20	1679144M1	1	Cowl	
21	354706X1	4	Screw Unc	
22	353762X1	4	Washer	
23	1681590M93	1	Cowl	Left Hand
24	1681599M1	1	Profile	(23) Left Hand
25		1	Cowl	(23) Not serviced, order REF NO 23
26	3381232M1	1	Gasket	
27	1684845M1	1	Gasket	
28	1682645M91	1	Bracket	
29	539568M91	1	Pin	For United States of America



1-0270-011

MASSEY FERGUSON

MF 698 TRACTOR, |-> 1984 (FR) - 1637150

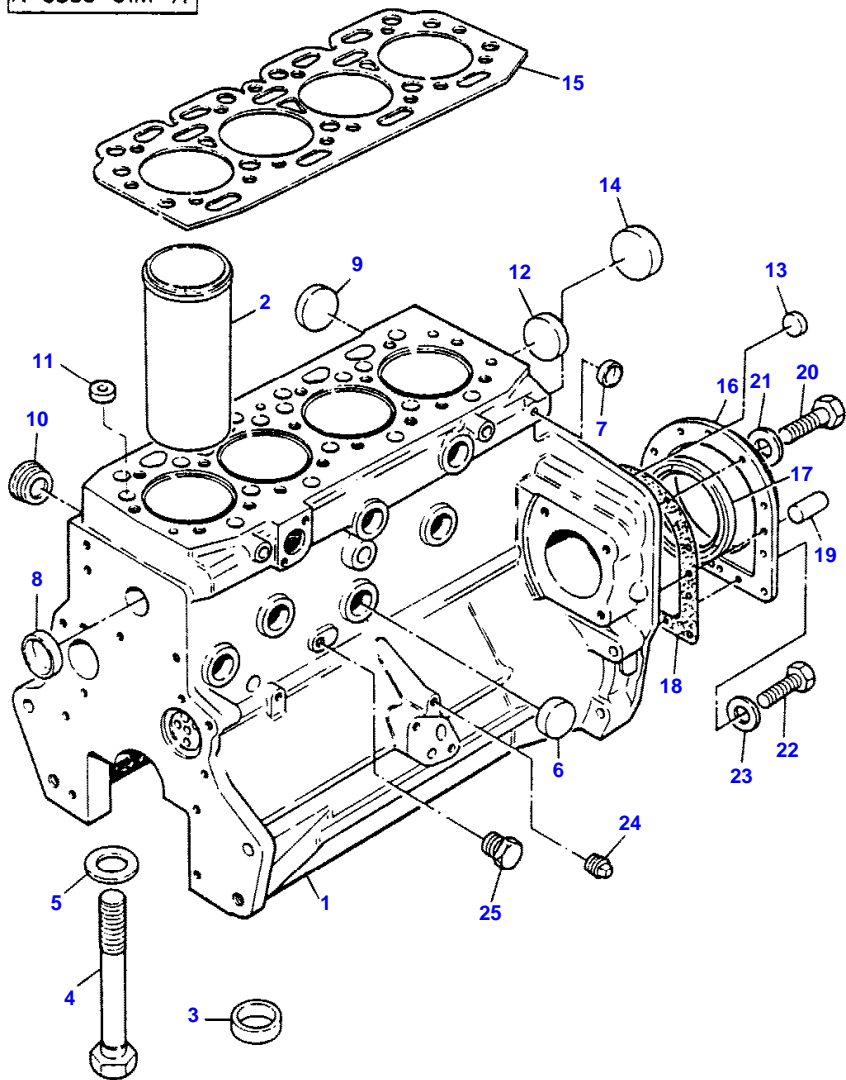
1637150

FAN

8

Item	Part Number	Qty	Description
1	1683926M1	1	Fan
2	506321M2	1	Spacer
3	0096233	4	Bolt
4	0920053	4	Washer

N-0560-01M-A



**Buy Now**



Our support email:

[ebooklibonline@outlook.com](mailto:ebooklibonline@outlook.com)