

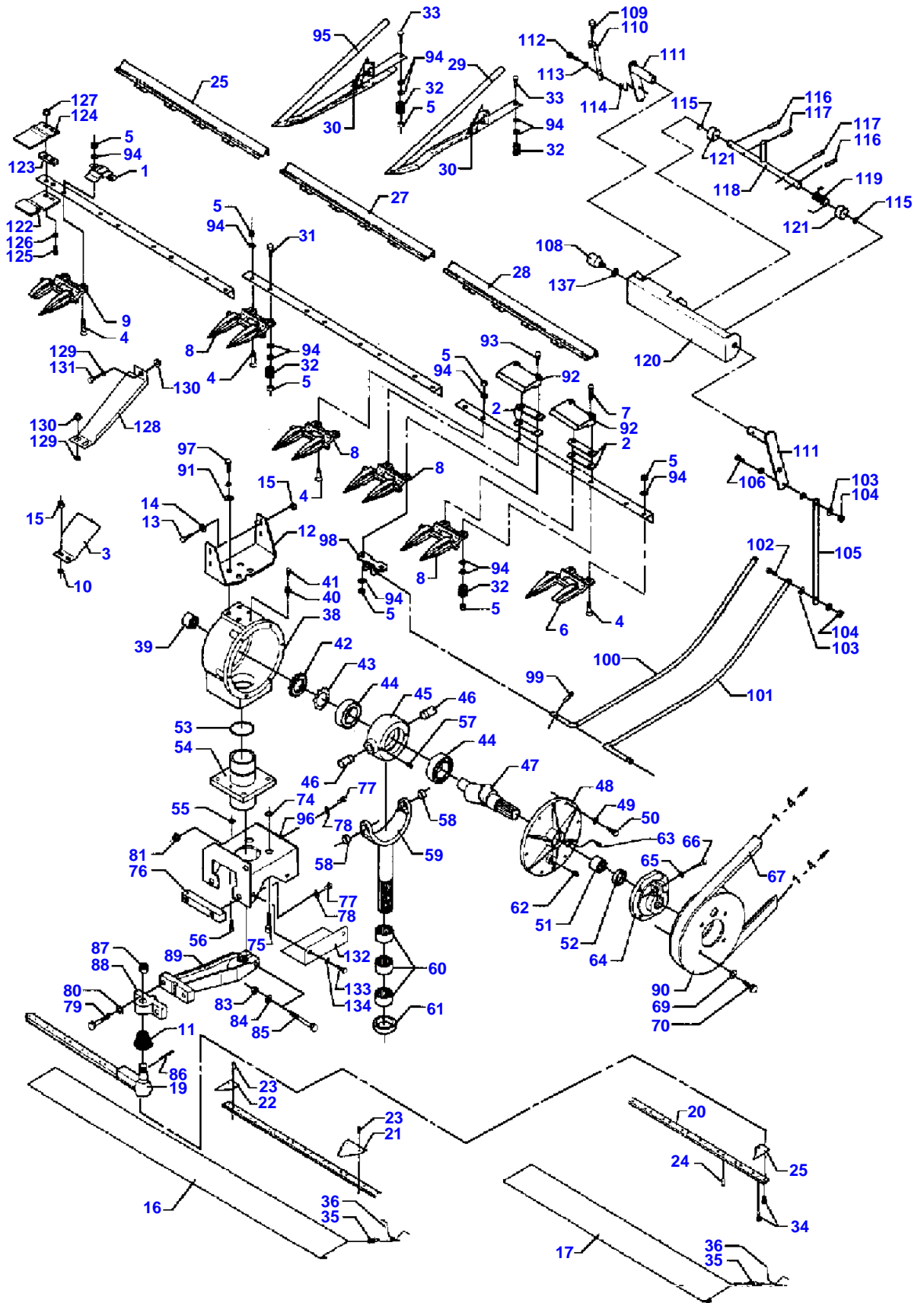
Page Title	Page Number
KNIVES AND FINGERS - FREEFLOW	1-1
FEEDER DRUM RIGHT HAND - FREEFLOW	1-2
FEEDER DRUM RIGHT HAND - FREEFLOW	1-3
GUARDING AND TRANSMISSIONS - FREEFLOW	1-4
TABLE HOUSING AND GUARDING - FREEFLOW	1-5
KNIVES AND FINGERS - POWERFLOW	1-6
FEEDER DRUM RIGHT HAND - POWERFLOW	1-7
FEEDER DRUM LEFT HAND - POWERFLOW	1-8
GUARDING AND TRANSMISSIONS - POWERFLOW	1-9
TABLE HOUSING AND GUARDING - POWERFLOW	1-10
POWERFLOW BAND - LEFT HAND	1-11
POWERFLOW BAND - RIGHT HAND	1-12
STRAW DIVIDER	1-13
TABLE TRAILER 2	1-14A
TABLE TRAILER 1	1-14B
LIGHTENING BRACKET 2	1-15A
LIGHTENING BRACKET 1	1-15B
VERTICAL KNIFE	1-16
ELECTRIC VERTICAL KNIFE	1-17
REEL - RIGHT HAND	2-1
REEL - LEFT HAND	2-2
REEL SUSPENSION AND HYDRAULIC CYLINDERS	2-3
REEL SUSPENSION AND HYDRAULIC MOTOR	2-4
FEEDER SHAFT - LOWER - T.52130	3-1
FEEDER SHAFT - UPPER AND SUSPENSION	3-2
FEEDER CHAIN - PROTECTIVE PLATES	3-3
TABLE CLUTCH	3-4
HYDRAULIC CYLINDER	3-5
REVERSING DEVICE	3-6
MAIZE ADAPTOR	3-7
TRANSMISSION AUTO-LEVEL - TABLE MF 32 T.51844	3-8
FEEDER SHAFT - LOWER	3-9
TRANSMISSION AUTO-LEVEL COMBINE	3-10
TRANSMISSION AUTO-LEVEL - TABLE MF 32 F.51845	3-11
TRANSMISSION STD. COMBINE - F.52131	3-12
CONCAVE	4-1
CONCAVE SETTING	4-2
THRESHING DRUM	4-3
DRUM COVER AND STONE TRAP	4-4
REAR BEATER	4-5
CHECK FLAPS	4-6
CONCAVE, CYLINDER AND GRAIN SEPARATOR	4-7
STRAW SHAKER AND CRANKS	5-1
FAN HOUSING, MANTLE AND ROTARY AIR INTAKE	6-1
FAN HOUSING AND GUARDING	6-2
MAIN FAN BLADE AND BOTTOM AUGER	6-3
MAIN FAN VARIATOR	6-4
COUNTER DRIVE	6-5
ECCENTRIC DRIVE	6-6
LOWER SHAKER SHOE AND SIEVES	6-7
LOWER SHAKER SHOE AND SUSPENSION	6-8
UPPER SHAKER SHOE AND SIEVES	6-9
UPPER SHAKER SHOE AND SUSPENSION	6-10
CONVEYOR PAN AND SUSPENSION	6-11
CHAFF SPREADER - BISO	6-12
CHAFF SPREADER - REKORD	6-13
FILLING ELEVATOR	7-1
FILLER PIPE	7-2
RETURN ELEVATOR	7-3
RETURN AUGER - UPPER	7-4
DISCHARGE AUGER, FIXED PART	9-1
DISCHARGE AUGER, SWIVEL PART	9-2
DISCHARGE AUGER PIPE	9-3
TRANSMISSION - UNLOADING AUGER	9-4
GUARDS - GRAIN TANK TOP	9-5
GUARD - GRAIN TANK	9-6

TABLE OF CONTENT

SUCTION CHANNEL AND HYDRAULIC COOLER MF 30/32	10-1
COOLING SYSTEM AND VENTILATOR SCREEN MF 30/32	10-2
AIR CLEANER MF 30/32	10-3
STRAINER MF 30/32	10-4
ENGINE BRACKET AND SILENCER F.48793 MF 30/32	10-5A
ENGINE BRACKET AND SILENCER T.48792 MF 30/32	10-5B
PROP. PUMP AND HYDR. PUMP	10-6
POWER TAKE-OFF	10-7
FAN HOUSING MF 30/32	10-8
FUEL TANK	10-9
SUCTION CHANNEL AND HYDRAULIC COOLER MF 30U	10-10
COOLING SYSTEM AND VENTILATOR SCREEN MF 30U	10-11
AIR CLEANER MF 30U	10-12
STRAINER MF 30U	10-13
ENGINE BRACKET AND SILENCER MF 30U	10-14
COUNTER SHAFT	11-1
CYLINDER TRANSMISSION	11-2
BELT MOUNTING	11-3
BELT CHART	11-4
BELT CHART	11-4A
DRIVING WHEELS AND FINAL DRIVES - RIGHT AND LEFT	12-1
FRONT AXLE, GEARBOX AND SHAFTS	12-2
REAR AXLE	12-3
REAR WHEEL	12-4
GEAR BOX	12-5
GEAR BOX	12-6
FINAL DRIVES	12-7
4-WHEEL DRIVE	12-8
DRIVING WHEELS AND FINAL DRIVES - AUTO-LEVEL	12-9
DRIVER CABIN	13-1
CAB ROOF AND SIDE MEMBERS	13-2
BRAKE PEDALS AND GEARSHIFT	13-3
INSTRUMENT PANEL AND CONTROL BOX	13-4
OPERATOR SEAT AND STEERING ARRANGEMENT	13-5
WINDOW PANES	13-6
FRONT PANEL, SIDE MEMBERS AND DATAVISION	13-7
CAB ROOF AND AIR-CONDITION - MF 30/32	13-8
PLATFORM AND LADDER - F.51333	13-9A
PLATFORM AND LADDER - T.51332	13-9B
CAB ROOF AND AIR-CONDITION - MF 30U	13-10
KEY TO SIGNATURES	14-1
KEY TO SIGNATURES	14-1A
HYDRAULICS - CYLINDER VARIATOR	14-2
HYDRAULIC - REEL SPEED MF 30/32	14-3
PROPULSION HYDRAULIC MF 30/32 - F.52131	14-4A
PROPULSION HYDRAULIC MF 30/32 - T.52130	14-4B
PUMP AND MAIN VALVE F.50929 MF30/32	14-5A
PUMP AND MAIN VALVE F.50795-T.50928 MF30/32	14-5B
PUMP AND MAIN VALVE F.49749-T.50794 MF30/32	14-5C
PUMP AND MAIN VALVE T.49748 MF30/32	14-5D
HYDRAULICS - TABLE UP/DOWN - F.52131	14-6A
HYDRAULICS - TABLE UP/DOWN - F.49064-T.52130	14-6B
HYDRAULICS - TABLE UP/DOWN - T.49063	14-6C
HYDRAULICS - STEERING GEAR	14-7
HYDRAULICS - UNLOADING AUGER	14-8
HYDRAULICS - REEL FORE/AFT. - MF 30/32	14-9A
HYDRAULICS - REEL FORE/AFT. - MF 30/32	14-9B
HYDRAULICS - REEL UP/DOWN - MF 30/32	14-10
HYDRAULICS - VERTICAL KNIFE	14-11
HYDRAULICS - CHAFF SPREADER - BISO	14-12
HYDRAULIC - REEL SPEED - MF 30U	14-13
PROPULSION HYDRAULIC - MF 30U	14-14A
PROPULSION HYDRAULIC - MF 30U	14-14B
PUMP AND MAIN VALVE - F.50929	14-15A
PUMP AND MAIN VALVE - F.50642-T.50928	14-15B
PUMP AND MAIN VALVE - T.50641	14-15C
HYDRAULICS - TABLE UP/DOWN - MF 30U	14-16
HYDRAULICS - REEL FORE/AFT. - MF 30U	14-17A

TABLE OF CONTENT

HYDRAULICS - REEL FORE/AFT. - MF 30U	14-17B
HYDRAULICS - REEL UP/DOWN - MF 30U	14-18
AUTO-LEVEL TABLE - STANDARD COMBINE - MF 32	14-19
HYDRAULICS - CHAFF SPREADER - REKORD	14-20
AUTO-LEVEL COMBINE - TABLE - MF 32	14-21
AUTO-LEVEL COMBINE - MF 32	14-22
PIPE SUPPORT	14-23
LOWER GUARDING	15-1
STRAW NOSE	15-2
STRAW NOSE - LOWER GUARDING AND WIND GUARDING	15-3
UPPER GUARDING - ENGINE	15-4
TOOLS	16-1
WIRING	16-2
WIRING	16-2A
WIRING	16-3
WIRING	16-3A
WIRING	16-4
WIRING	16-4A
ELECTRIC BOX	16-5
ELECTRIC BOX - AUTO-LEVEL COMBINE - F.52083	16-6
ELECTRICAL PARTS	16-7
ELECTRICAL PARTS	16-8
STRAW CHOPPER - BISO	17-1
SPREADER PLATE -BISO	17-2
STRAW CHOPPER - BISO FLAP-TYPE	17-3
SPREADER PLATE - BISO FLAP-TYPE	17-4
COUNTER DRIVE - STRAW CHOPPER	17-5
ADJUSTMENT - STRAW CHOPPER - BISO FLAP-TYPE	17-6
STRAW CHOPPER - REKORD	17-7
STRAW CHOPPER CLUTCH - REKORD	17-8
DECAL, FRONT AND RIGHT SIDE	18-1
DECAL, REAR AND LEFT SIDE	18-2



KNIVES AND FINGERS - FREEFLOW

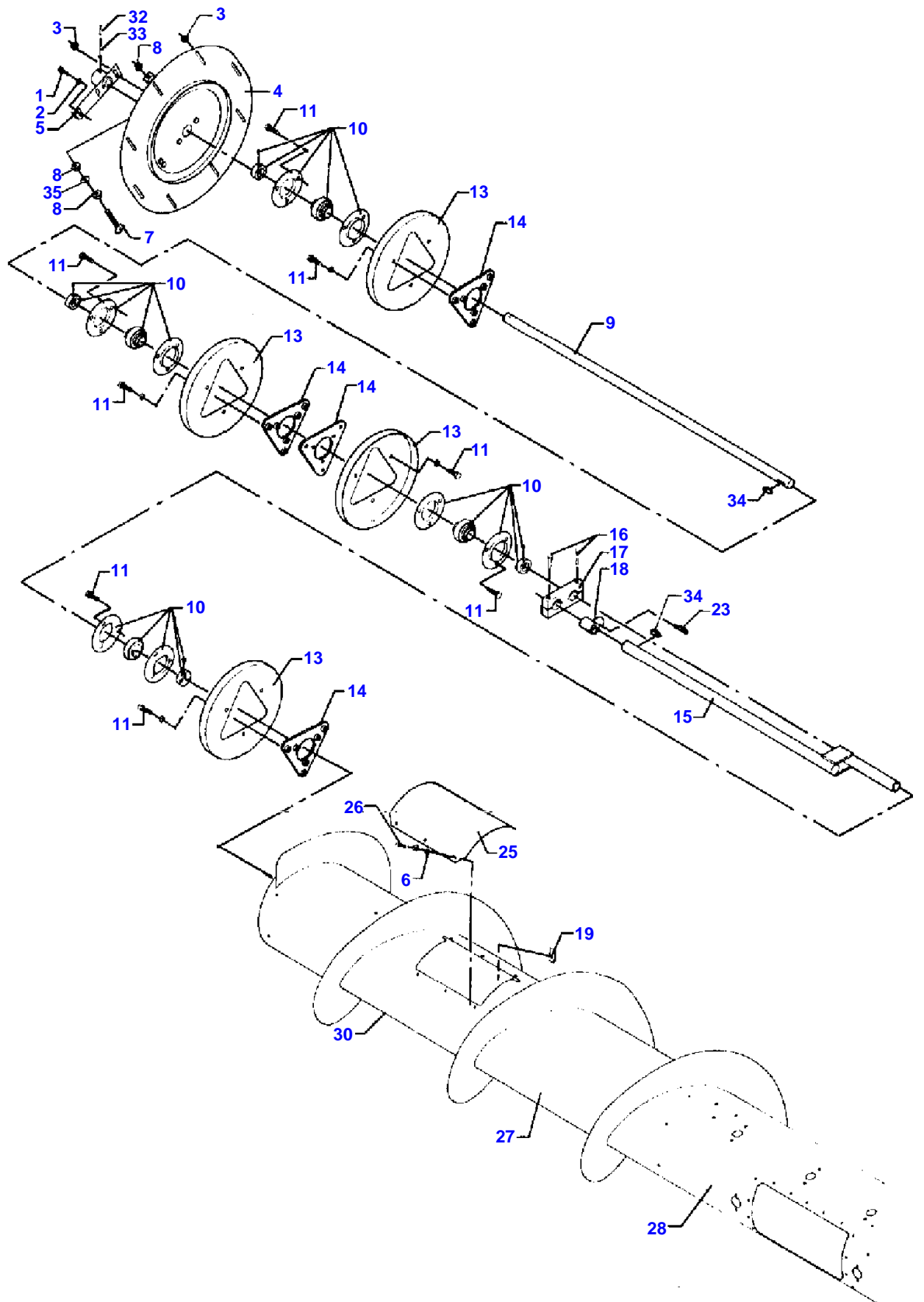
Item	Part Number	Qty	Description	Comments
001	D28283934	11	Pliers	(S8)
	D28283934	13	Pliers	(T7)
	D28283934	15	Pliers	(S4)
	D28283934	17	Pliers	(T8)
002	D28230292	4	Shim	
003	D28280809	1	Guard	T.926970
005	D41010800		Nut Metric	
006	D28260535	1	Finger	Left Hand
007	D40067600	2	Screw	
008	D44102900	23	Finger	(S8)
	D44102900	27	Finger	(T7)
	D44102900	31	Finger	(S4)
	D44102900	34	Finger	(T8)
009	D28260531	1	Finger	Right Hand
010	D20400506	2	Spacer	T.926970
011	D44120500	1	Cap	
012	D28283104	1	Support	
013	D40405000	4	Screw Metric	
014	D20400414	8	Washer	
015	D41013500		Nut	
016	D28230842	1	Guard	(S8 POS. 35, 36)
	D28230842	1	Guard	(T7 POS. 35, 36)
	D28230845	1	Guard	(S4 POS. 35, 36)
	D28230842	2	Guard	(T8 POS. 35, 36)
017	D28230843	1	Guard	(S8 POS. 35, 36)
	D28230843	1	Guard	(T7 POS. 35, 36)
	D28230844	1	Guard	(S4 POS. 35, 36)
	D28230843	1	Guard	(T8 POS. 35, 36)
	D28283009	2	Knife Back	(T8)
	D28283306	2	Knife Back	(S8)
	D28283307	2	Knife Back	(T7)
	D28283308	2	Knife Back	(S4)
019	D28283011	2	Knife Head	
020	D28281488	2	Knife Back	(S8)
	D28281489	2	Knife Back	(T7)
	D28281490	2	Knife Back	(S4)
	D28281491	2	Knife Back	(T8)
021	D44103700		Section	(5)
022	D44103800	2	Half Section	Right Hand
023	D41306100		Rivet	(5)
024	D41306200		Rivet	(5)
025	D44104000	2	Half Section	Left Hand
026	D28283701	1	Stone Trap	Right Hand
027	D28283703	1	Stone Trap	(T7)
	D28283704	1	Stone Trap	(S4)
	D28283705	1	Stone Trap	(S8)
028	D28283702	1	Stone Trap	Left Hand
029	D49040200		Ear Lifter	
030	D49040400		Spring	
031	D40426000		Screw	
032	D49040600		Roller	
033	D40426000		Screw	
034	D40402400	2	Screw Metric	
035	D26500317	2	Spring	
036	D28230841	2	Spring	
	D28281067	1	Wobble Drive	PO. 38-66
038	D44127800	1	Box	
039	D44128800	1	Bearing Needle	
040	D44129400	1	Connector	
041	D46116500	1	Valve	
042	D44129100	1	Nut	
043	D44129200	1	Washer	
044	D41668400	2	Bearing Roller	
045	D44127900	1	Housing	
046	D44128000	2	Journal	
047	D44129300	1	Shaft	
048	D44128200	1	Cover	
049	D41100700	1	Washer	
050	D40404900	6	Screw Metric	
051	D41669700	1	Bearing Needle	

KNIVES AND FINGERS - FREFLOW

Item	Part Number	Qty	Description	Comments
052	D44128900	1	Seal	
053	D45481500	1	O Ring	
054	D44128300	1	Bearing Carrier	
055	D41100700	2	Washer	
056	D40697200	2	Screw	
057	D40639600	2	Pin	
058	D44128400	2	Bush	
059	D44128500	1	Yoke	
060	D41669800	3	Bearing Needle	
061	D45409500	1	Seal	
062	D44128600	1	Plug	
063	D45236200	1	Plug	
064	D44127100	1	Hub	
065	D41100900	1	Washer	
066	D40694000	1	Screw	
067	D41985600	1	Belt	
069	D20400426	4	Washer	
070	D40410900	4	Screw	
074	D20400523	4	Spacer	
075	D40465400	4	Screw	
076	D28283103	1	Clamp	
077	D40416500	5	HEXAGON SCREW	
078	D20400461	5	Washer	
079	D40698400	2	Screw	
080	D20400438	2	Washer	
081	D41087900	2	Locknut	
083	D41087700	1	Locknut	
084	D20400428	1	Washer	
085	D40429400	1	HEXAGON SCREW	
086	D41409100	1	SPLIT PIN	
087	D41054300	1	Nut	
088	D44126900	1	Flange	
089	D44127000	1	Swivel Arm	
090	D44127200	1	Pulley	
091	D28280986	4	Dog	
092	D28260362		Clip	
093	D40067200	2	Screw	
094	D20400419		Washer	
095	D49040300		Ear Lifter	
096	D28283109	1	Support	
097	D40405100	4	Screw Metric	
098	D28284356	4	Fitting	(AX)
099	D42611800	8	Pin	(AX)
100	D28284257	2	Sensing Finger	(AX)
101	D28284258	2	Sensing Finger	(AX)
102	D40405300	4	Screw	(AX)
103	D20400506	20	Spacer	(AX)
104	D41087500	8	Locknut	(AX)
105	D28284223	4	Link	(AX)
106	D40423600	4	HEXAGON SCREW	(AX)
108	D28780523	2	Meter	(AX)
109	D40402400	2	Screw Metric	(AX)
110	D28780845	2	Stem	(AX)
111	D28284225	4	Arm	(T8 AUTO-LEVEL)
111	D28284234	4	Lever	(V7 AUTO-LEVEL)
112	D40402700	2	Screw Metric	(AX)
113	D20400404	2	Washer	(AX)
114	D41013400	2	Nut	(AX)
115	D20400439	4	Washer	(AX)
116	D42611900	8	Pin	(AX)
117	D42612300	4	Pin	(AX)
118	D28284232	2	Shaft	(AX)
119	D28284389	2	Spring	(AX)
120	D28284222	2	Support	(BM)
120	D28284229	2	Support	(T8 AUTO-LEVEL)
121	D28284456	4	Bush	(AX)
122	D28281576	1	Plate	F.926971
123	D28281575	1	Shim	F.926971
124	D28281574	1	Plate	F.926971
125	D40423600	2	HEXAGON SCREW	F.926971

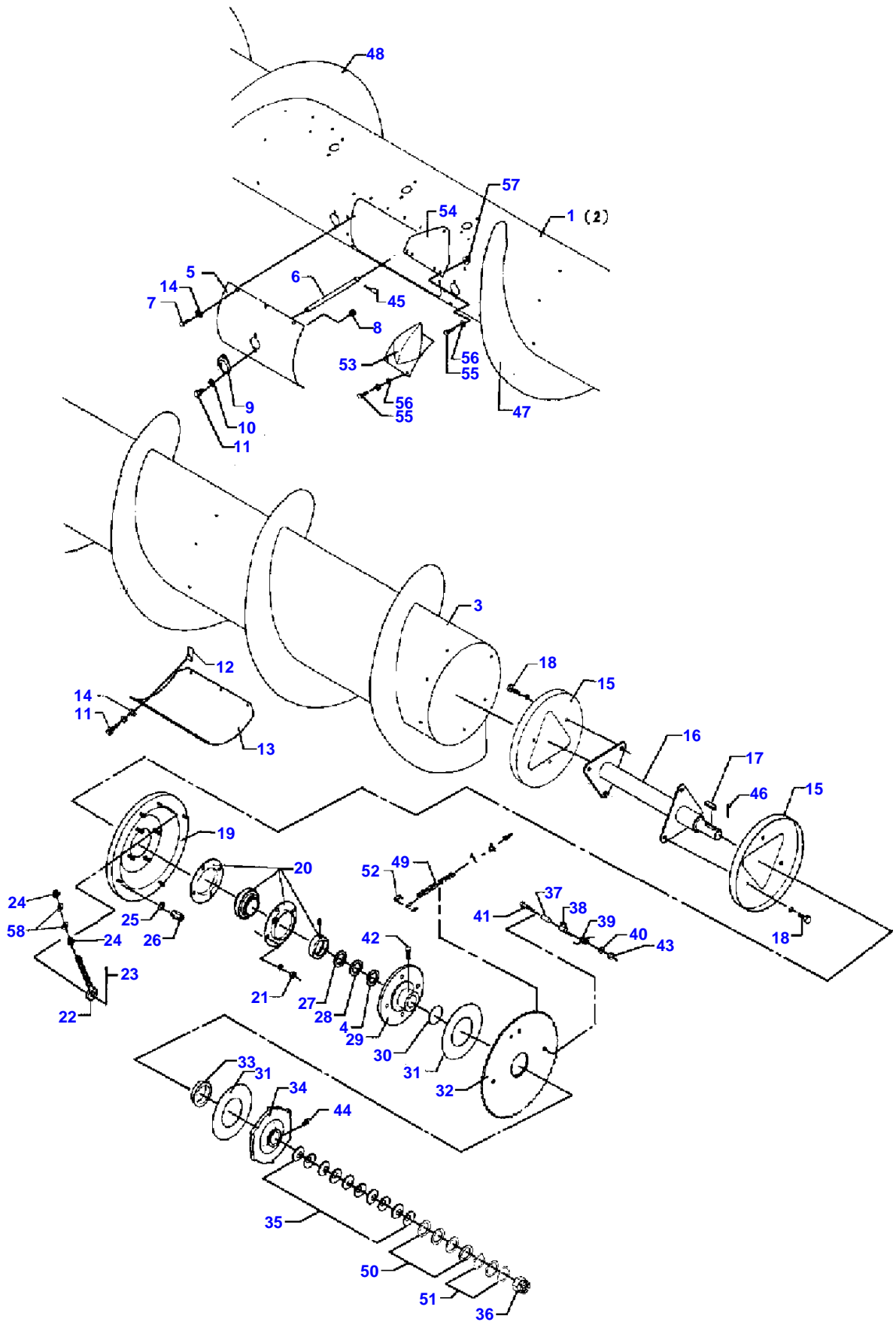
KNIVES AND FINGERS - FREEFLOW

Item	Part Number	Qty	Description	Comments
126	D20400506	2	Spacer	F.926971
127	D41013500	2	Nut	F.926971
128	D28281572	1	Knife	F.926971
129	D20400506	3	Spacer	F.926971
130	D41013500	3	Nut	F.926971
131	D40404900	1	Screw Metric	F.926971
132	D28281706	1	Guard	F.926971
133	D40404700	2	Screw Metric	F.926971
134	D20400506	2	Spacer	F.926971
135	D40402400		Screw Metric	(OM)
136	D41087400		Locknut	(OM)
137	D20400441		Washer	+F.929773 (AX) OPTIONAL EQUIPMENT AUTO-LEVEL (BM) AUTO-LEVEL 16' (OM) ALTERNATIVE TO POS. 23 (S4) 16' (S8) 12' (T7) 14' (T8) 18' (V7) 14'-16' (5) OPTIONAL



FEEDER DRUM RIGHT HAND - FREEFLOW

Item	Part Number	Qty	Description	Comments
001	D40404700	1	Screw Metric	
002	D20400506	1	Spacer	
003	D41013500	10	Nut	
004	D28280040	1	Plate	Right Hand
005	D28283029	1	Adjuster	
006	D20400470	6	Washer	
007	D28211023	1	Bolt	
008	D41010800	2	Nut Metric	+F.929460
009	D28283035	1	Crankshaft	(S8)
	D28283767	1	Crankshaft	(T7)
	D28283768	1	Crankshaft	(S4)
	D28283036	1	Crankshaft	(T8)
010	D41707800	3	Flange	(S3)
	D41707800	4	Flange	(T9)
011	D40407900		Screw Metric	
013	D28280014	3	Plate	(S3)
	D28280014	3	Plate	(T9)
014	D28283847	3	Bearing Plate	(S3)
	D28283847	4	Bearing Plate	(T9)
015	D28283016	1	Crankshaft	
016	D40426100	2	Screw	
017	D28283039	1	Arm	
018	D28251831	15	Bearing	
019	D43428200	6	Nut	
023	D28283853	15	Hair Pin	
025	D28283070	1	Cover	
026	D40402600	6	Screw Metric	
027	D28283788	1	Drum	(S8)
	D28283789	1	Table Auger	(T7)
	D28283790	1	Drum	(S4)
	D28283134	1	Drum	(T8)
028	D28283012	1	Shell	
030	D28283488	1	Shell	Right Hand (S8)
030	D28283792	1	Shell	Right Hand (T7)
030	D28283795	1	Shell	Right Hand (S4)
030	D28283032	1	Shell	Right Hand (T8)
032	D42616400	1	Pin	
033	D42625300	1	Pin	
034	D43104700	2	Key	
035	D20400471	2	Washer	+F.929460 (S3) 12'-14' (S4) 16' (S8) 12' (T7) 14' (T8) 18' (T9) 16'-18'



MASSEY FERGUSON

MF 30/32 COMBINES,->| 53049 - 1637229

1637229

FEEDER DRUM RIGHT HAND - FREEFLOW

1-3

Item	Part Number	Qty	Description	Comments
001	D28283788	1	Drum	(S8)
	D28283789	1	Table Auger	(T7)
	D28283790	1	Drum	(S4)
	D28283134	1	Drum	(T8)
002	D28283012	1	Shell	
003	D28283487	1	Shell	Left Hand (S8)
003	D28283793	1	Shell	Left Hand (T7)
003	D28283794	1	Shell	Left Hand (S4)
003	D28283033	1	Shell	Left Hand (T8)
004	D28280957		Ring	(5)
005	D28283078	1	Cover	
006	D28283815	15	Spike	
007	D40402600		Screw Metric	
008	D41087400		Locknut	
009	D28283060	15	Bush	
010	D20400404		Washer	
011	D40402600		Screw Metric	
012	D43428200	6	Nut	
013	D28283070	1	Cover	
014	D20400470	14	Washer	
015	D28280014	2	Plate	
016	D28283007	1	Drive Shaft	
017	D43106800	1	Key	
018	D40407600	6	Screw	
019	D28283053	1	Plate	Left Hand
020	D41716500	1	Bearing	
021	D41010900	4	Nut Metric	
022	D28281387	1	Screw	
023	D41408900	1	Pin	
024	D41010800	2	Nut Metric	+F.929460
025	D20400415	4	Washer	
026	D28280729	4	Nut	
027	D28280956		Ring	(5)
028	D28281029		Spacer	(5)
029	D28283004	1	Washer	
030	D45481600	1	Ring	
031	D45904300	2	Facing	
032	D28283008	1	Sprocket	
033	D28283000	1	Insert	
034	D28283003	1	Washer	
035	D41112400	10	Washer	
036	D41054100	1	Castle Nut	
037	D28281431	1	Spacer	
038	D28281432	1	Carrier	
039	D28283006	1	Spring	
040	D20400507	1	Spacer	
041	D40426100	1	Screw	
042	D40405000	1	Screw Metric	
043	D41087600	1	Locknut	
044	D43001500	1	Greaser	
045	D28283853	15	Hair Pin	
046	D41408800	1	Pin	
047	D28281448	1	Spiral	(S8)
	D28280988	1	Spiral	(T7)
	D28280052	1	Spiral	(S4)
	D28280051	1	Spiral	(T8)
048	D28281449	1	Spiral	(S8)
	D28280989	1	Spiral	(T7)
	D28280054	1	Spiral	(S4)
	D28280053	1	Spiral	(T8)
049	D42329300	1	Chain	
050	D20400520		Spacer	(5)
051	D20400523	3	Spacer	
052	D42365100	1	Link	
053	D28283294	4	Spike	
054	D28281694	4	Threaded Part	

MASSEY FERGUSON

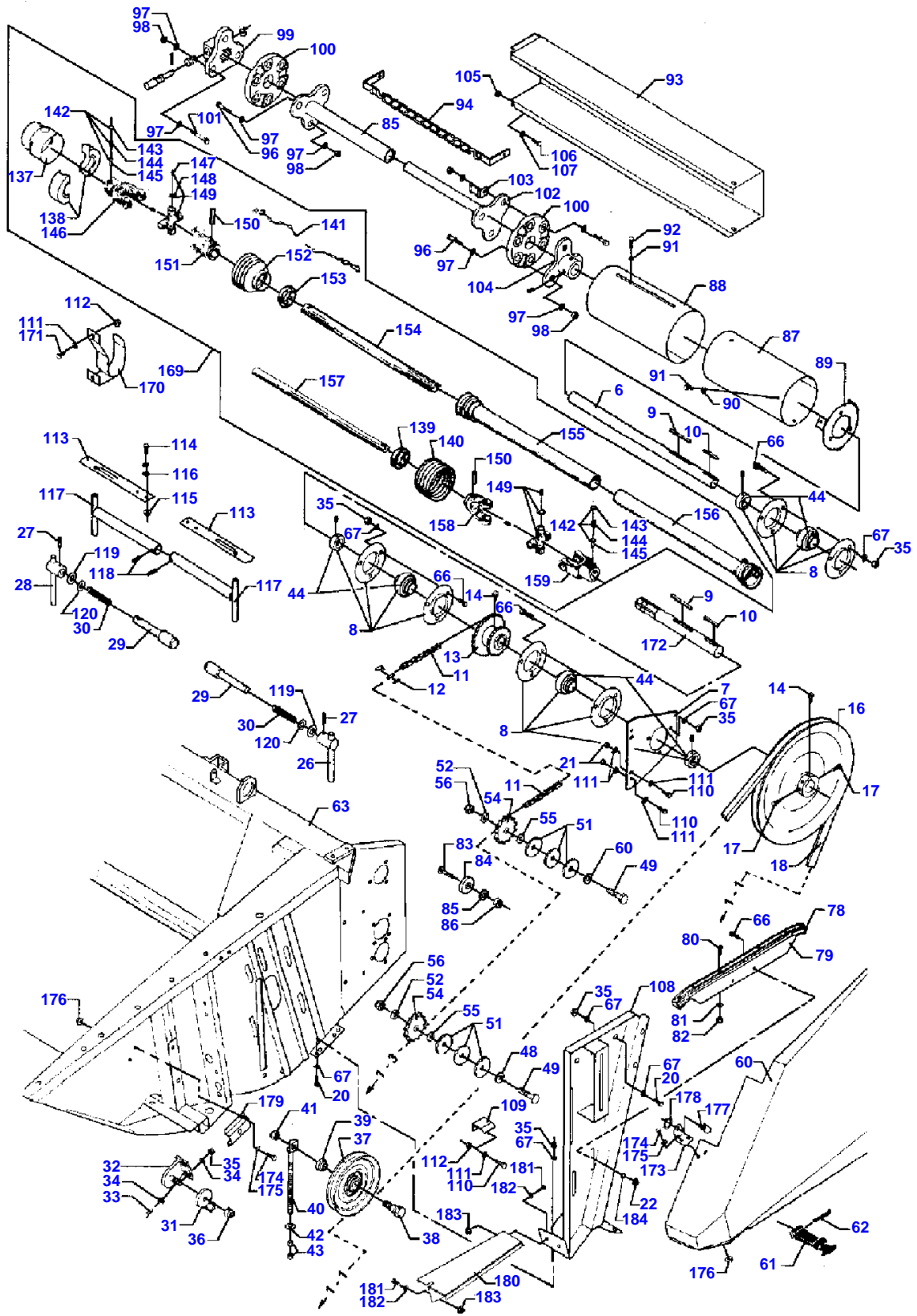
MF 30/32 COMBINES,->| 53049 - 1637229

1637229

FEEDER DRUM RIGHT HAND - FREEFLOW

1-3

Item	Part Number	Qty	Description	Comments
055	D40404900	20	Screw Metric	
056	D20400506	20	Spacer	
057	D41087500	12	Locknut	
058	D20400471	2	Washer	+F.929460 (S4) 16' (S8) 12' (T7) 14' (T8) 18' (5) OPTIONAL



GUARDING AND TRANSMISSIONS - FREEFLOW

Item	Part Number	Qty	Description	Comments
006	D28283483	1	Shaft	(S8 T.924891)
	D28283484	1	Shaft	(T7 T.924891)
	D28283485	1	Shaft	(S4 T.924891)
	D28283486	1	Shaft	(T8 T.924891)
007	D28283099	1	Support	
008	D41707800	2	Flange	
009	D43114900	1	Key	
010	D43105000	1	Key	
011	D42329300	1	Chain	
012	D42365100	1	Link	
013	D28280225	1	Sprocket	
014	D40466200	3	Setscrew	
016	D28280281	1	Pulley	
017	D40466700	2	Screw Metric	
018	D41985600	1	Belt	
020	D40407700	4	Screw	
021	D41087500		Locknut	
022	D41087600	2	Locknut	+F.929460
026	D28283281	1	Arm	
027	D42612200	2	Pin	
029	D28283200	2	Shaft	
030	D27100794	2	Spring	
031	D28251593	2	Lock Washer	
032	D28251918	2	Bracket	
033	D40407700	4	Screw	
034	D20400507	8	Spacer	
035	D41087600		Locknut	
036	D41087900	2	Locknut	
037	D28760159	1	Pulley	
038	D28760156	1	Screw	
039	D28760155	1	Bush	
040	D28260181	1	Bolt	
041	D41087900	1	Locknut	
042	D20400416		Washer	
043	D41010800	2	Nut Metric	
044	D41663500	2	Bearing Ball	
048	D28181284	1	Washer	
049	D40433600	2	HEXAGON SCREW	
050	D20400463	1	Washer	
051	D20400460	6	Washer	
052	D20400459	2	Washer	
054	D41716800	2	Tightener	
055	D20400516		Spacer	(5)
056	D41087900	2	Locknut	
060	D28281583	1	Toy Mf 6150	F.926971
	D28283156	1	Cowl	T.926970
061	D44737100	1	Rubber Strap	T.926970
062	D41411100	1	SPLIT PIN	T.926970
063	D28283687	1	Housing	(S8)
	D28283688	1	Housing	(T7)
	D28283689	1	Housing	(S4)
	D28283690	1	Housing	(T8)
066	D40066800	2	Screw Metric	+F.929460
067	D20400419		Washer	
078	D28280787	1	Rail	
079	D28281365	1	Crossmember	
080	D40609300	6	Screw	
081	D20400466	6	Washer	
082	D41087200	6	Locknut	
083	D40073100	1	Screw	
084	D28280981	1	Spacer	
085	D20400459	1	Washer	
086	D41087900	1	Locknut	
087	D28282105	1	Guard	T.924891
088	D28282110	1	Guard	T.924891
089	D28280834	1	Ring	T.924891
090	D40404700	3	Screw Metric	T.924891
091	D20400506	4	Spacer	T.924891
092	D43385200	1	Screw	T.924891
093	D28283418	1		(S8 T.924891)

Buy Now



Our support email:

ebooklibonline@outlook.com