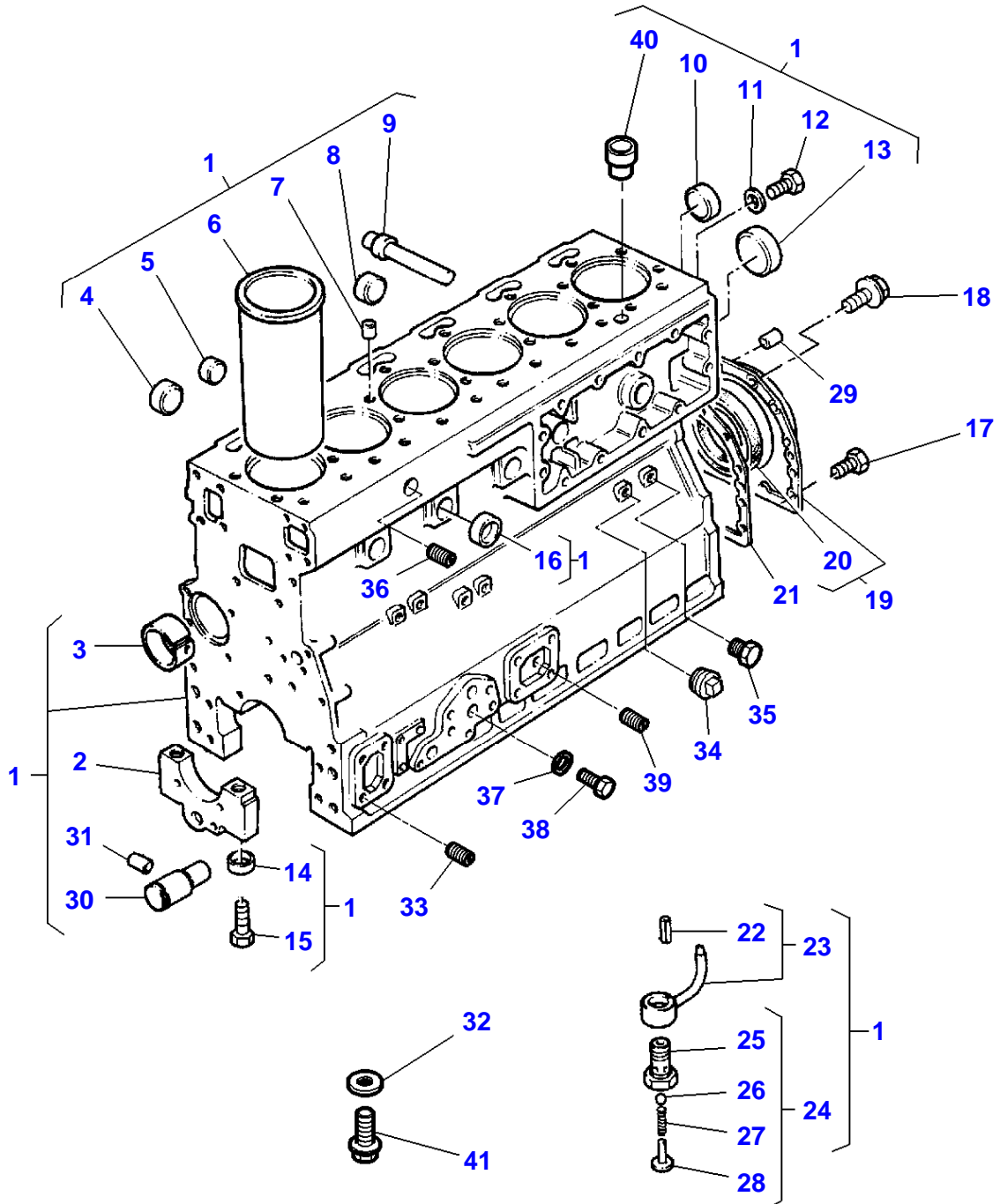


Page Title	Page Number
Engine And Equipment - M.F 8210	010-0005
Engine And Equipment - M.F 8220 - 8220 XTRA	010-0010
Engine And Equipment - With Pneumatic Brake	010-0015
Alternator And Bracket - Up to Serial or Engine Number - K	010-0020
Alternator And Bracket - From Serial or Engine Number - K	010-0025
ALTERNATOR - MAGNETI MARELLI - Up to Serial or Engine Number - K 284016	010-0030
Alternator - ISKRA - From Serial or Engine Number - K 284017	010-0035
Alternator - Valeo - Up to Serial or Engine Number - K 289024	010-0040
Alternator - ISKRA - From Serial or Engine Number - K 289025	010-0045
Starter - Magneti Marelli - Up to Serial or Engine Number - K302039	010-0050
Starter - ISKRA - From Serial or Engine Number - K302040	010-0055
Fan Drive Section	010-0060
Cylinder Block	010-0065
Crankshaft, Pistons And Connecting Rods	010-0070
Cylinder Head	010-0075
Rocker Shaft	010-0080
Lubricating Oil Filler And Breather	010-0085
Timing Gear And Camshaft	010-0090
Fuel Injection Equipment (Diesel)	010-0095
Fuel Injection Equipment (Diesel) - M.F 8210	010-0100
Fuel Injection Equipment (Diesel) - M.F 8220 - 8220 XTRA	010-0105
Lubricating Oil Sump	010-0110
Lubricating Oil Filter And Integral Cooler	010-0115
Closed circuit breather	010-0120
Water Pump, Thermostat And Heat Exchanger - M.F 8210	010-0125
Water Pump, Thermostat And Heat Exchanger - M.F 8220 - 8220 XTRA	010-0130
Air Compressor - M.F 8220 - 8220 XTRA	010-0135
Air Compressor - M.F 8220 - 8220 XTRA	010-0140
Low Pressure Fuel System - M.F 8210	010-0145
Low Pressure Fuel System - M.F 8220 - 8220 XTRA	010-0150
Low Pressure Fuel System - M.F 8220 - 8220 XTRA - With Pneumatic Brake	010-0155
Low Pressure Fuel System	010-0160
Low Pressure Fuel System	010-0165
Turbocharger	010-0170
Turbocharger - Pipes And Heat Shields	010-0175
Air Induction And Exhaust System - M.F 8210	010-0180
Air Induction And Exhaust System - M.F 8220 - 8220 XTRA	010-0185
Engine Gaskets Sets	010-0190
Heater Engine Block - Up to Serial or Engine Number - L155012	010-0195
Heater Engine Block - From Serial or Engine Number - L155013	010-0200
Battery & Cables - Without Battery Cut-Off W/O Positive Connection	010-0205
Battery & Cables - Without Battery Cut-Off With Positive Connection	010-0210
Battery & Cables - With Battery Cut-Off	010-0215
Cooling System - Air Conditioned Installation - Up To 07-09-2000	010-0220
Cooling System - Air Conditioned Installation - From 08-09-2000	010-0225
Sanden Compressor	010-0230
Cooling System - Engine	010-0235
Cab Heating System - Engine Part	010-0240
Fuel System - Fuel Tank And Attachments - Without Additional Tank	010-0245
Fuel System - Fuel Tank And Attachments - With Additional Tank	010-0250
Fuel System - Fuel Tank And Attachments - Tractor With Cab - With Additional Tank	010-0255
Fuel System - Fuel Tank And Attachments - Platform	010-0260
Fuel System - Fuel Tank And Attachments - Platform -With Additional Tank	010-0265

Engine And Equipment

Fuel System - Fuel Filters And Pipes	010-0270
Fuel System - Fuel Filters And Pipes - With Flow Fuel	010-0275
Fuel System - Fuel Filters And Pipes - WITH FUEL COOLER	010-0280
Fuel System - Fuel Filters And Pipes - WITH FLOW METER AND FUEL COOLER	010-0285
Sedimenter	010-0290
Fuel System - Fuel Tank And Attachments	010-0295
Air Filter - Dry - Dual Element - Up To ...	010-0300
Air Filter - Dry - Dual Element - From	010-0305
Air Filter - Dry - Dual Element - With Platform - Up To ...	010-0310
Air Filter - Dry - Dual Element - With Platform - From	010-0315
Air Filter - Dry - Dual Element	010-0320
Vertical Exhaust On The Side - With Dusty Aspiration - Up To J250011	010-0325
Vertical Exhaust On The Side - With Dusty Aspiration - From J250012	010-0330
Vertical Exhaust On The Side - M.F 8210 - Platform	010-0335
Vertical Exhaust On The Side - M.F 8220 - 8220 XTRA - Platform	010-0340
Throttle Controls	010-0345
Throttle Controls - With AUTODRIVE	010-0350
Throttle Controls - Platform	010-0355
Throttle Controls	010-0360
Throttle Controls - Up To 07-01-2001	010-0365
Throttle Controls - From 08-01-2001	010-0370
Hand Throttle Control - Platform	010-0375

1-ZH01-002-A



Cylinder Block

Item	Part Number	Qty	Description	Comments
1	4224542M91	1	Kit,Cyl.Block	Up to Serial or Engine Number U786028J MF 8210
	4224647M91	1	Cylinder Block	From Serial or Engine Number U786029J MF 8210
	4224542M91	1	Kit,Cyl.Block	MF 8220 MF 8220 XTRA
2		7	Cap	(1) Not serviced,order REF . 1
3	4222017M1	1	Bush	(1)
4	731354M1	3	Plug	[D] (1)
5	746259M1	3	Plug	[D] (1)
6	4222128M1	6	Liner	[B]
	4222129M1	6	Liner	[A] (1)
	4223985M1	6	Liner	[B] Thickness +0.25MM
7	736868M1	1	Plug	[G] (1)
8	4222012M1	5	Plug	[E] (1)
9	1476282X1	1	Plug	[F] (1)
10	746259M1	1	Plug	[H] (1)
11	3638664M1	1	Washer	(1)
12	376180X1	1	Plug	[I] (1)
13	4222043M1	1	Plug	[J] (1)
14	733072M1	14	Ring	(1)
15	1476108X1	14	Screw	(1)
16	746259M1	5	Plug	[C] (1)
17	3641756M1	2	Screw	
18	3637008M1	12	Screw	
19	3640868M91	1	Housing	---> U764751H
	4224532M1	1	Housing	---> U764752H
20	1447691M1	1	Seal	---> U764751H (19)
21	4223587M1	1	Joint	
22	4222512M1	1	Dowel	(23)
	1447763M1		Dowel	
23	4224385M91	6	Jet	(1)
24	3637005M91	6	Valve	(1)
25		1	Body	(24) Not serviced,order REF. 24
26	3637006M1	1	Ball	(24)
27	748149M1	1	Spring	(24)
28	3637007M1	1	Retainer	(24)
29	731947M1	2	Dowel	
30	3641847M1	1	Shaft	(1)
31	3638414M1	1	Pin	
32	376616X1	6	Bush	(1)
33	748393M1	4	Plug	
34	731996M1	2	Plug	
35	376670X1	2	Plug	
36	376606X1	1	Plug	
37	1650388M1	1	Washer	
38	3638809M1	1	Screw	
39	4224584M1	1	Plug	
40	4222439M1	2	Dowel	(1)
41	348281X1	6	Screw	(1)

FOOTNOTE [A] UNFINISHED - PRESS FIT

FOOTNOTE [B] FINISHED - SLIP FIT

FOOTNOTE [C] WATER JACKET , LEFT HAND SIDE

FOOTNOTE [D] WATER JACKET , RIGHT HAND SIDE

FOOTNOTE [E] TAPPET CHAMBER

FOOTNOTE [F] ROCKER OIL FEED DRILLING, RIGHT HAND SIDE

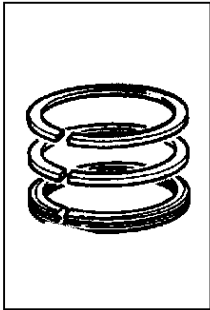
FOOTNOTE [G] ROCKER OIL FEED DRILLING, TOP FACE

FOOTNOTE [H] WATER JACKET , REAR FACE

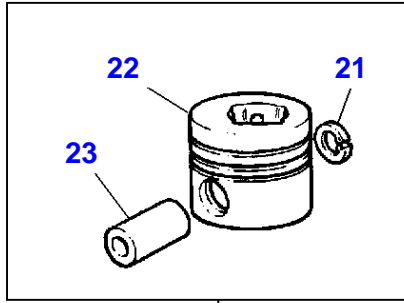
Cylinder Block

Item	Part Number	Qty	Description	Comments
FOOTNOTE	[I]		LUBRICATING OIL PRESSURE RAIL ,	REAR END
FOOTNOTE	[J]		CAMSHAFT CHAMBER,	REAR END

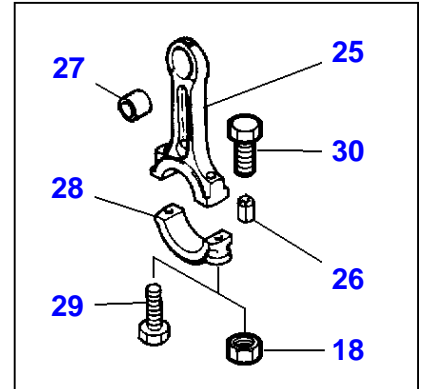
1-ZH02-002-C



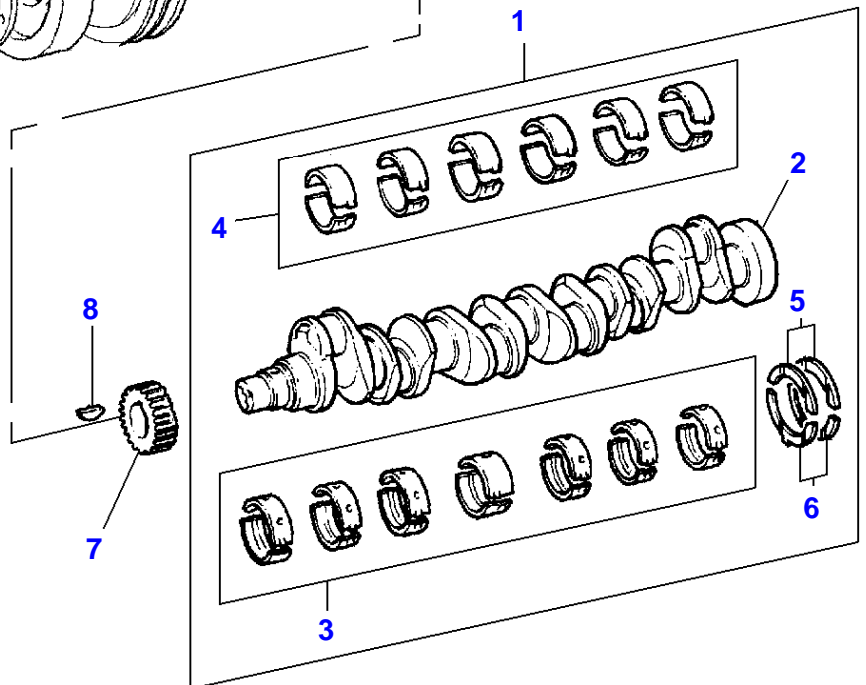
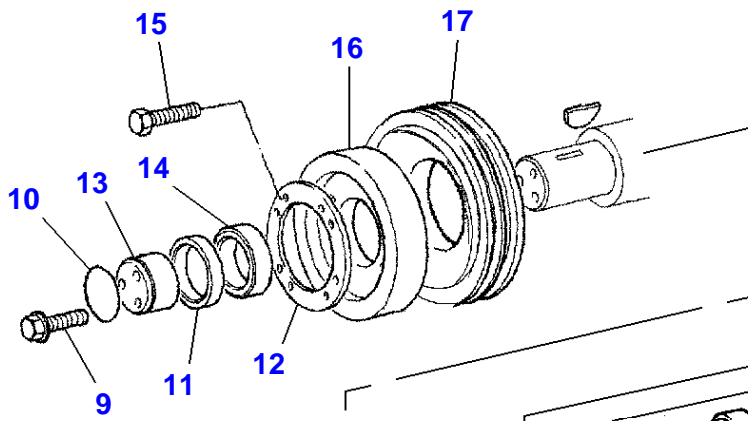
19



20



24



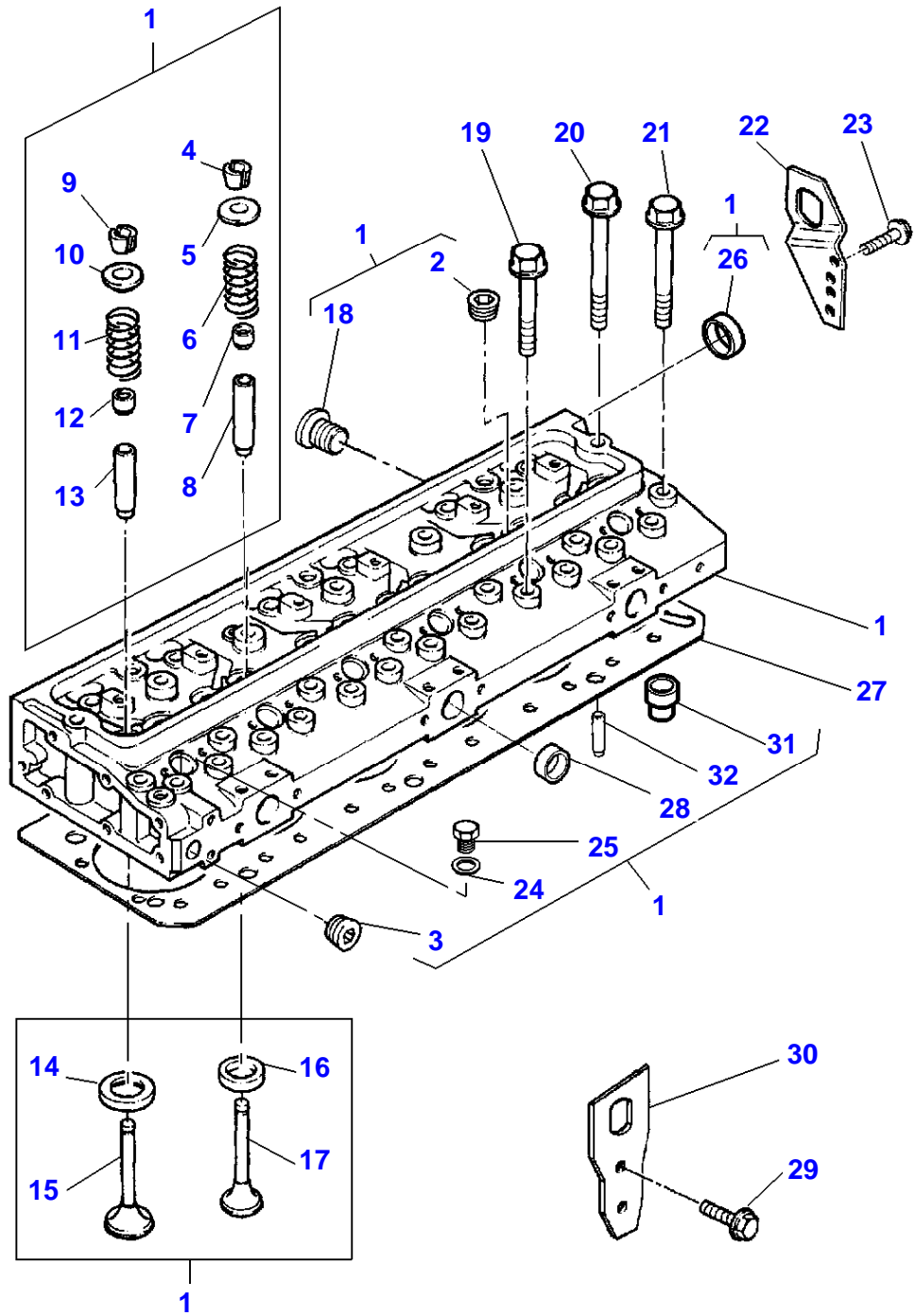
Item	Part Number	Qty	Description	Comments
1	4222279M91	1	Kit, Crankshaft	MF 8210
	3637019M91	1	Kit, Crankshaft	MF 8220
				MF 8220 XTRA
2		1	Crankshaft	(1) Not serviced,order REF. 1
3	3637020M91	1	Kit, Bearing	[A]
				(1)
	3637021M91	X	Kit, Bearing	[A]
				Thickness (-)0.25MM
	3637022M91	X	Kit, Bearing	[A]
				Thickness (-)0.50MM
	3637023M91	X	Kit, Bearing	[A]
				Thickness (-)0.75MM
4	3637024M91	1	Kit, Bearing	[A]
				(1)
	3637025M91	X	Kit, Bearing	[A]
				Thickness (-)0.25MM
	3637026M91	X	Kit, Bearing	[A]
				Thickness (-)0.50MM
	3637027M91	X	Kit, Bearing	[A]
				Thickness (-)0.75MM
5	747128M1	2	Thrust Washer	(1)
	735742M1	X	Washer	Thickness (+)0.19MM
6	747129M1	2	Thrust Washer	(1)
	735743M1	X	Washer	Thickness (+)0.19MM
7	748201M1	1	Gear	
8	2196X	1	Key	
9	748074M1	3	Screw	
10	1447207M1	1	O Ring	
11	1447128M1	1	Spacer	
12	3638589M1	1	Plate	
13	742536M1	1	Thrust Plate	
14	748315M1	1	Spacer	
15	3638590M1	6	Screw	
16	1476037M1	1	Damper	
17	3638588M1	1	Pulley	
18	3637030M1	12	Nut	[B] (24)
19	4222136M91	6	Kit, Piston Ring	
20	4222134M91	6	Kit, Piston	HIGH GRADE
21	4222135M1	2	Circlip	(20)
22		1	Piston	(20) Not serviced,order REF. 20
23		1	Pin	(20) Not serviced,order REF. 20
24	4223432M91	6	Kit, Conrod	HIGH GRADE WHITE "H"
	4223433M91	6	Kit, Conrod	INT GRADE GREEN "J"
	4223434M91	6	Kit, Conrod	INT GRADE PURPLE "K"
	4223435M91	6	Kit, Conrod	LOW GRADE BLUE "L"
	4223522M91	6	Kit, Conrod	[B] MF 8220 MF 8220 XTRA HIGH GRADE "L"
	4223523M91	6	Kit, Conrod	[B] MF 8220 MF 8220 XTRA LOW GRADE "H"
25		1	Rod	(24) Not serviced,order REF. 24
26	4222133M1	2	Dowel	(24)
27	4222131M1	1	Bush	(24)
28		1	Cap	(24) Not serviced,order REF. 24
29	4222132M1	2	Screw	(24)
30	4222485M1	12	Screw	[B] (24)

Item	Part Number	Qty	Description	Comments
------	-------------	-----	-------------	----------

FOOTNOTE [A] PRE-FINISHED

FOOTNOTE [B] ENGINE WITH AIR COMPRESSOR

1-ZH03-002-A

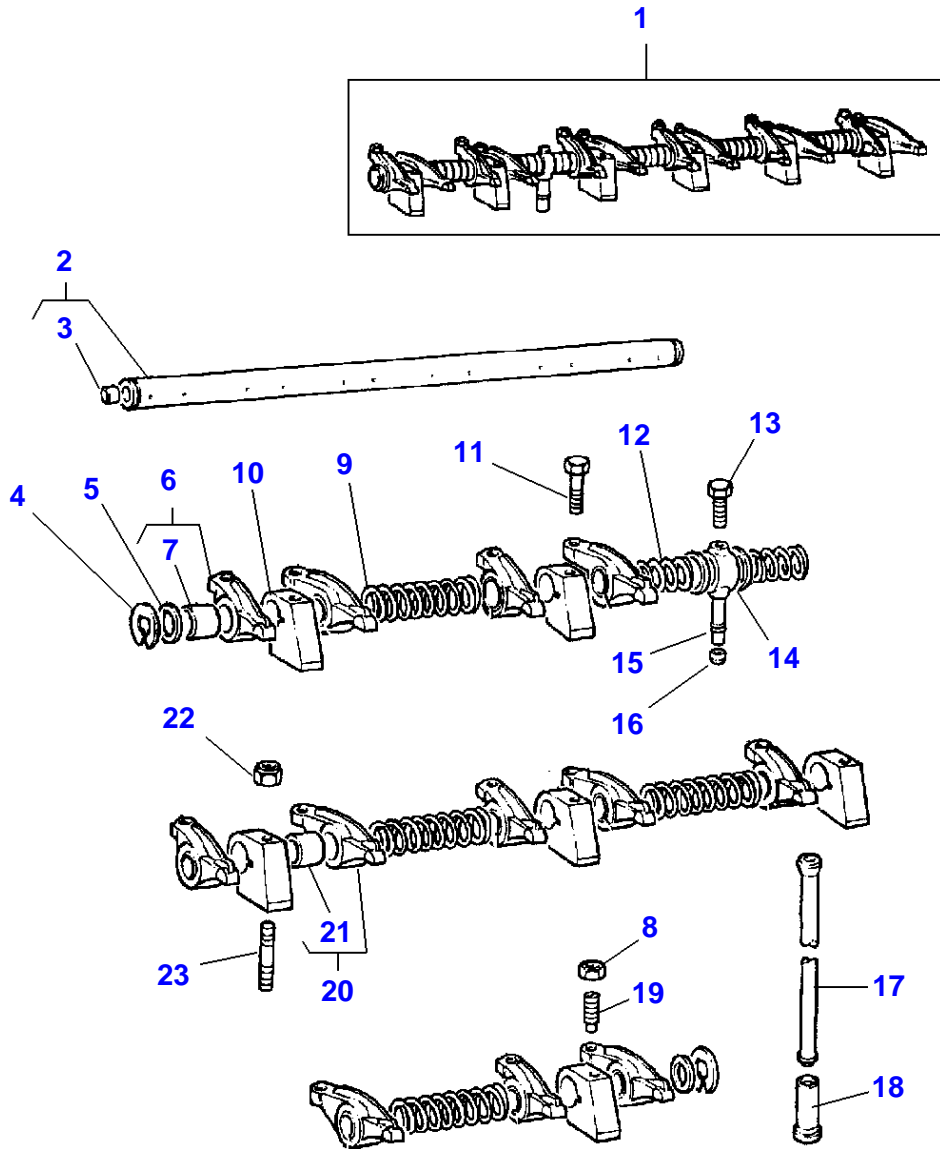


Cylinder Head

Item	Part Number	Qty	Description	Comments
1	4223757M91	1	Kit, Cyl. Head	MF 8210
	4223594M91	1	Kit, Cyl. Head	MF 8220
				MF 8220 XTRA
2	4224584M1	6	Plug	(1)
3	376606X1	1	Plug	(1)
4	4222141M1	12	Cotter	[A] (1)
5	4222140M1	6	Cap	(1)
6	4222139M1	6	Spring	(1)
7	4223442M1	6	Seal	(1)
8	4223581M1	6	Valve Guide	(1)
9	4222141M1	12	Cotter	[A] (1)
10	4222140M1	6	Cap	(1)
11	4222139M1	6	Spring	(1)
12	4222333M1	6	Oil Seal	(1)
13	4223987M1	6	Guide	(1)
				Replace and repair. Old not interchangeable with new 4222954M1
14	4222895M1	6	Insert	(1) MF 8210
	4222148M1	6	Insert	(1) MF 8220
				MF 8220 XTRA
15	4222894M1	6	Valve Inlet	(1) MF 8210
	4222149M91	6	Valve Inlet	(1) MF 8220
				MF 8220 XTRA
16	4222897M1	6	Insert	(1) MF 8210
	4224284M1	6	Insert	(1) MF 8220
				MF 8220 XTRA
17	4222896M1	6	Valve Exhaust	(1) MF 8210
	4222147M91	6	Valve Exhaust	(1) MF 8220
				MF 8220 XTRA
18	4222144M1	1	Plug	(1)
19	745662M1	12	Screw	
20	1476243X1	2	Screw	
21	745663M1	18	Screw	
22	4222170M1	1	Plate	
23	3637051M1	2	Screw	
24	376178X1	1	Washer	(1)
25	731410M1	1	Plug	(1)
26	746259M1	1	Plug	(1)
27	4222354M1	1	Head Gasket	
28	731354M1	3	Plug	(1)
29	3637051M1	2	Screw	
30	4222228M1	1	Plate	
31	4222439M1	2	Dowel	(1)
32	4222552M1	2	Dowel	(1)

FOOTNOTE [A] SERVICED IN PAIRS

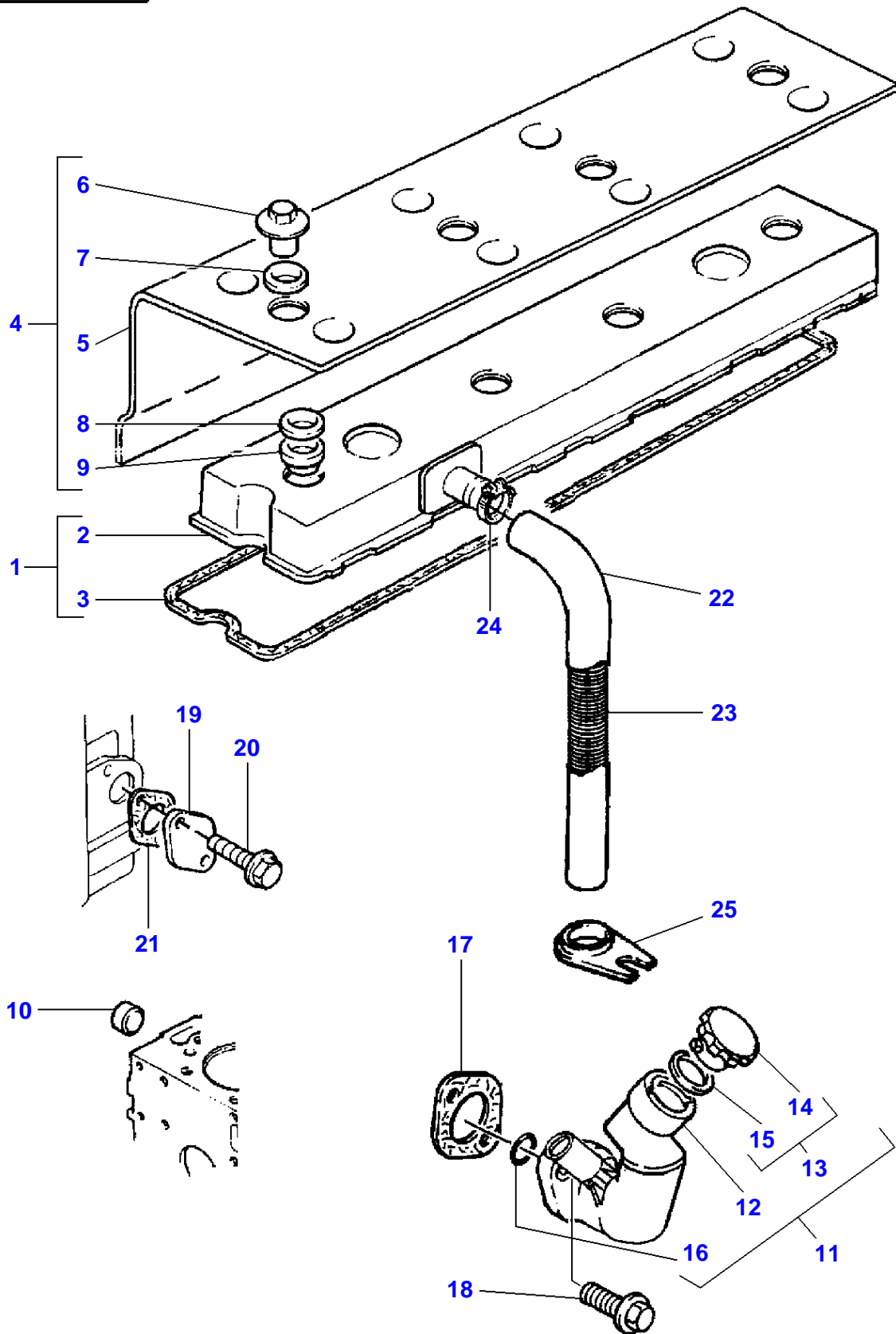
1-ZH04-002-A



Rocker Shaft

Item	Part Number	Qty	Description	Comments
1	4224482M91	1	Rocker Shaft Ass	Replace and repair. Old not interchangeable with new 4222334M91
2	4222335M91	1	Rocker Shaft	(1)
3	731330M1	2	Plug	(2)
4	376137X1	2	Circlip	(1)
5	4222156M1	2	Washer	(1)
6	4224543M1	6	Rocker	(1)
7	4224553M1	1	Bush	Replace and repair. Old interchangeable with new 4222157M1 (6)
8	376123X1	12	Nut	Replace and repair. Old not interchangeable with new 4222158M1 (1)
9	733811M1	4	Spring	(1)
10	3638403M1	6	Bracket	(1)
11	3637073M1	2	Screw	
12	733812M1	2	Spring	(1)
13	3638500M1	1	Screw	(1)
14	739513M91	2	Shim	(1)
15	3638499M1	1	Connection	(1)
16	376525X1	1	Olive	
17	733817M1	12	Rod	
18	4222069M1	12	Tappet	
19	4223933M1	12	Screw	(1) MF 8210
	731516M1	12	Bolt	(1) MF 8220
	4223933M1	12	Screw	Up to Serial or Engine Number 26-03-99 (1) MF 8220
	4223933M1	12	Screw	From Serial or Engine Number 27-03-99 (1) MF 8220 XTRA
20	4224544M1	6	Rocker	(1)
21	4224553M1	1	Bush	Replace and repair. Old interchangeable with new 4222159M1 (20)
22	3637067M1	4	Nut	Replace and repair. Old not interchangeable with new 4222158M1
23	3637066M1	4	Stud	

1-ZH10-005-B



Lubricating Oil Filler And Breather

Item	Part Number	Qty	Description	Comments
1	4223935M91	1	Cyl.Head Cover	Replace and repair. Old interchangeable with new 4223721M91
	4223935M91	1	Cyl.Head Cover	[A] MF 8220 MF 8220 XTRA
2		1	Cover	(1) Not serviced,order REF NO 1
3	4224398M1	1	Gasket	(1) Replace and repair. Old not interchangeable with new 4222930M1
4	4223723M91	1	Cover	
5		1	Cover	(4) Not serviced,order REF NO 4
6	4223724M1	4	Nut	(4)
7	376656X1	4	Washer	(4)
8	4223725M1	4	Washer	(4)
9	3638640M1	4	Bush	(4)
10	4222012M1	1	Plug	
11	4222041M1	1	Filler	
12		1	Filler	(11) Not serviced,order REF NO 11
13	3641889M1	1	Cap	(11)
14		1	Cap	(13) Not serviced,order REF NO 13
15	3641231M1	1	O Ring	(13)
16	4222713M1	1	O Ring	(11)
17	3641284M1	1	Joint	
18	3637011M1	2	Screw	
19	3641267M1	1	Plate	
20	3637008M1	1	Screw	
21	3641266M1	1	Joint	
22	740597M1	1	Pipe	
23	745540M1	1	Spring	
24	3638640M1	1	Bush	
25	745489M1	1	Bracket	

FOOTNOTE [A] ENGINE WITH AIR COMPRESSOR

Buy Now



Our support email:

ebooklibonline@outlook.com