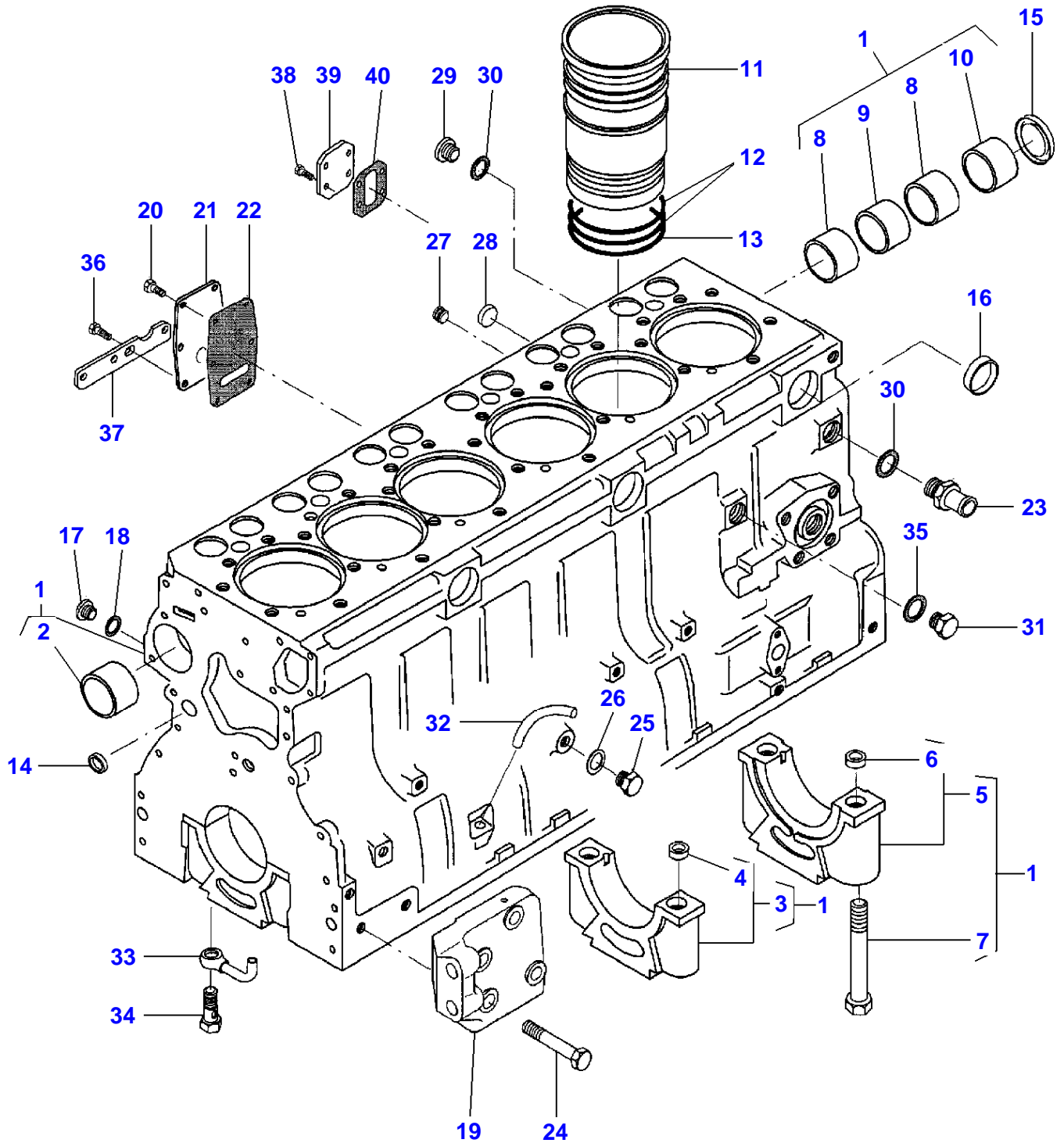


| Page Title  | Page Number |
|---|-------------|
| Engine And Equipment  | 010-0005    |
| Alternator And Bracket - Up to Serial or Engine Number - K110016            | 010-0010    |
| Alternator And Bracket - From Serial or Engine Number - K110017             | 010-0015    |
| Alternator - Valeo - Up to Serial or Engine Number - K110016                | 010-0020    |
| Alternator - ISKRA - From Serial or Engine Number - K110017                 | 010-0025    |
| Starter - Magneti Marelli - Up to Serial or Engine Number - K073010         | 010-0030    |
| Starter - ISKRA - From Serial or Engine Number - K073011                    | 010-0035    |
| Cylinder Block  | 010-0040    |
| Timing Gear Housing   | 010-0045    |
| Flywheel Housing - Dynashift  | 010-0050    |
| Flywheel Housing - With Full Powershift                                     | 010-0055    |
| Crankshaft, Pistons And Connecting Rods                                     | 010-0060    |
| Valve Mechanism And Camshaft  | 010-0065    |
| Cylinder Head   | 010-0070    |
| Cylinder Head Cover   | 010-0075    |
| Thermostat  | 010-0080    |
| Lubricating Oil Sump - Up to Serial or Engine Number - J14443               | 010-0085    |
| Lubricating Oil Sump - From Serial or Engine Number - J14444                | 010-0090    |
| Lubricating Oil Pump - Up to Serial or Engine Number - J7890                | 010-0095    |
| Lubricating Oil Pump - From Serial or Engine Number - J7891                 | 010-0100    |
| Lubricating Oil Cooler And Filter   | 010-0105    |
| Water Pump - M.F 8250   | 010-0110    |
| Water Pump - M.F 8250 XTRA  | 010-0115    |
| Fuel Injection Equipment (Diesel) - M.F 8250                                | 010-0120    |
| Fuel Injection Equipment (Diesel) - M.F 8250 XTRA                           | 010-0125    |
| Fuel Injection Equipment (Diesel)   | 010-0130    |
| Feed Pump - M.F 8250  | 010-0135    |
| Feed Pump - M.F 8250 XTRA   | 010-0140    |
| Stop Magnet - Up to Serial or Engine Number - K 12633                       | 010-0145    |
| Stop Magnet - From Serial or Engine Number - K 12634                        | 010-0150    |
| Low Pressure Fuel System  | 010-0155    |
| Air Induction And Exhaust System - M.F 8250                                 | 010-0160    |
| Air Induction And Exhaust System - M.F 8250 XTRA                            | 010-0165    |
| Turbocharger - Pipes - M.F 8250   | 010-0170    |
| Turbocharger - Pipes - M.F 8250 XTRA  | 010-0175    |
| Cold Starting Device - M.F 8250   | 010-0180    |
| Belt Tensioner - Up to Serial or Engine Number - K 18108                    | 010-0185    |
| Belt Tensioner - From Serial or Engine Number - K 18109                     | 010-0190    |
| Engine Repair Kits - Piston- Cylinder Head With Valves                      | 010-0195    |
| Engine Gaskets Sets   | 010-0200    |
| Heater Engine Block - Up to Serial or Engine Number - L155012               | 010-0205    |
| Heater Engine Block - From Serial or Engine Number - L155013                | 010-0210    |
| Heater Engine Block   | 010-0215    |
| Battery & Cables - Without Battery Cut-Off W/O Positive Connection          | 010-0220    |
| Battery & Cables - With Battery Cut-Off                                     | 010-0225    |
| Battery & Cables - Without Battery Cut-Off With Positive Connection         | 010-0230    |
| Cooling System - Air Conditioned Installation - M.F 8250 - Up To 07-09-2000 | 010-0235    |
| Cooling System - Air Conditioned Installation - M.F 8250 - From 08-09-2000  | 010-0240    |
| Cooling System - Air Conditioned Installation - M.F 8250 XTRA               | 010-0245    |
| Sanden Compressor   | 010-0250    |
| Cooling System - Engine   | 010-0255    |
| Cab Heating System - Engine Part  | 010-0260    |
| Fuel System - Fuel Tank And Attachments - Without Additional Tank           | 010-0265    |
| Fuel System - Fuel Tank And Attachments - With Additional Tank              | 010-0270    |

MF 8250 TRACTOR - 1637366  
1-ZH01-004-B

1-ZH01-004-B

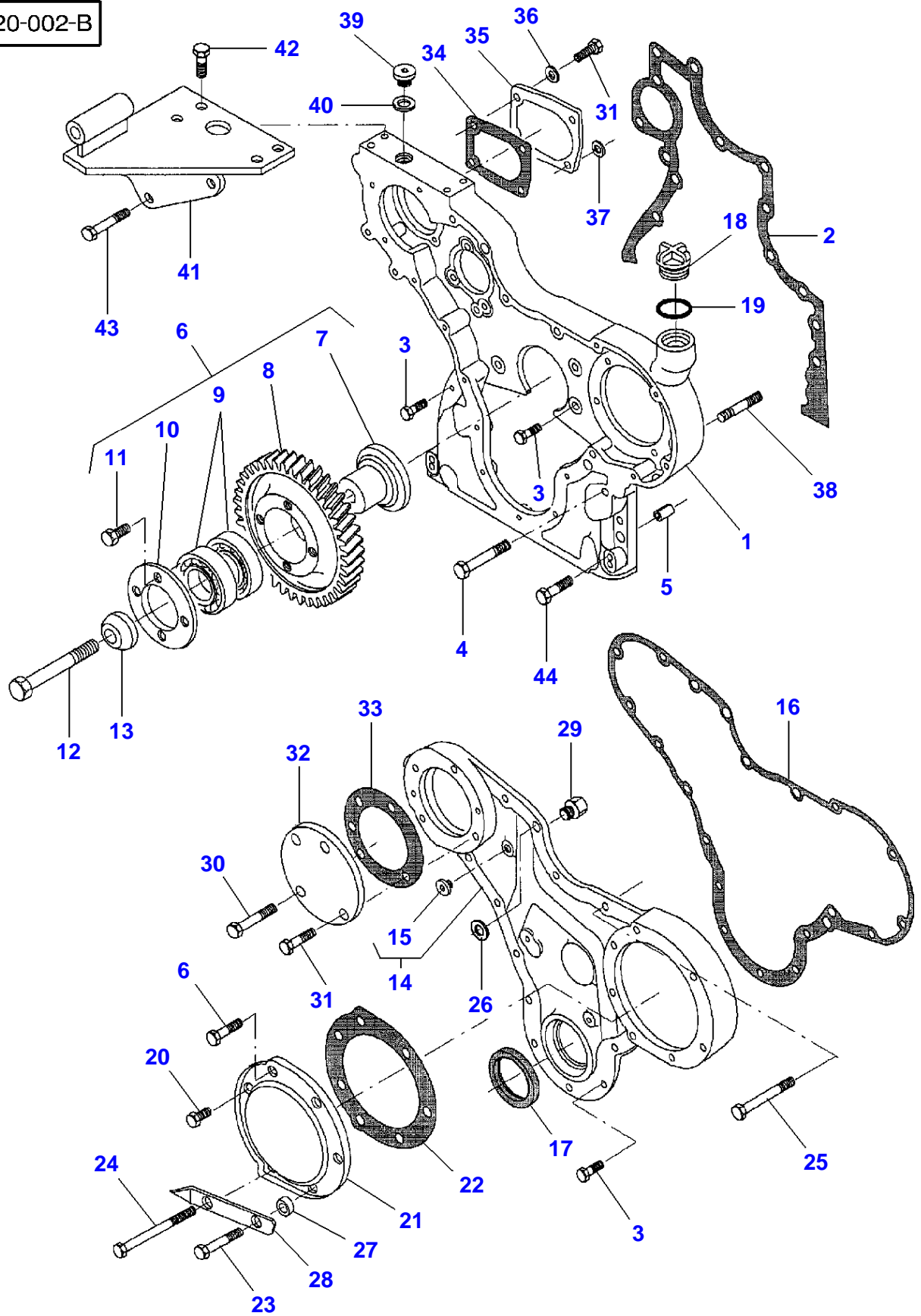


## Cylinder Block

| Item | Part Number | Qty | Description     | Comments   |
|------|-------------|-----|-----------------|--|
| 1    | V836847275  | 1   | Cylinder Block  | MF 8250  |
|      | V836866110  | 1   | Cylinder Block  | MF 8250 XTRA                                       |
| 2    | V836322610  | 1   | Bush            | (1)<br>MF 8250                                     |
|      | V836866069  | 1   | Bush            | (1)<br>MF 8250 XTRA                                |
|      | V836866036  | X   | Bush            | MF 8250 XTRA<br>Diameter +0.4MM                    |
| 3    |             | 6   | Bearing Carrier | (1)  |
| 4    | V836214478  | 2   | Bush            | (3)  |
| 5    |             | 1   | Bearing Carrier | (1)  |
| 6    | V836214478  | 2   | Bush            | (5)  |
| 7    | V529903180  | 14  | Screw           | (1)  |
| 8    | V836852460  | 2   | Bush            | (1)  |
| 9    | V836852459  | 1   | Bush            | (1)  |
| 10   | V836852461  | 1   | Bush            | (1)  |
| 11   | V836647420  | 6   | Liner           |  |
|      | V836647933  | X   | Liner           | Thickness 9,08MM                                   |
|      | V836647934  | X   | Liner           | Thickness 9,13MM                                   |
|      | V836647935  | X   | Liner           | Thickness 9,23MM                                   |
| 12   | V836647502  | 12  | O Ring          |  |
| 13   | V836647503  | 6   | O Ring          |  |
| 14   | V640016016  | 4   | Plug            |  |
| 15   | V836852744  | 1   | Plug            |  |
| 16   | V640016040  | 3   | Plug            |  |
| 17   | V640325110  | 3   | Plug            |  |
| 18   | V615571014  | 4   | Seal            |  |
| 19   | V836852656  | 1   | Support         | Up to Serial or Engine Number K xxxx<br>Left Hand  |
|      | V836864529  | 1   | Support         | From Serial or Engine Number K xxxx<br>Left Hand   |
|      | V836852657  | 1   | Support         | Up to Serial or Engine Number K xxxx<br>Right Hand |
|      | V836864530  | 1   | Support         | From Serial or Engine Number K xxxx<br>Right Hand  |
| 20   | V528801380  | 4   | Screw           | M8X20  |
| 21   | V836847994  | 1   | Cover           |  |
| 22   | V836322852  | 1   | Gasket          |  |
| 23   | V836119837  | 1   | Union           |  |
| 24   | V529802682  | 8   | Screw           | MF 8250<br>M14 X 65                                |
|      | V529902680  | 8   | Screw           | MF 8250 XTRA<br>M14 X 65                           |
| 25   | V640305012  | 1   | Plug            |  |
| 26   | V615881216  | 1   | Gasket          |  |
| 27   | V640025010  | 1   | Plug            |  |
| 28   | V640016018  | 3   | Plug            |  |
| 29   | V640325018  | 1   | Plug            |  |
| 30   | V615881822  | 2   | Seal            |  |
| 31   | V836019756  | 1   | Plug            |  |
| 32   | V836855997  | 1   | Pipe            |  |
| 33   | V836855093  | 6   | Pipe            |  |
| 34   | V836338601  | 6   | Valve           |  |
| 35   | V615881824  | 1   | Seal            |  |
| 36   | V528801400  | 2   | Screw           | M8X25  |
| 37   | V836859571  | 1   | Support         |  |
| 38   | V528801362  | 4   | Screw           | M8X16  |
| 39   | V836659543  | 1   | Cover           |  |
| 40   | V836659544  | 1   | Gasket          |  |

MF 8250 TRACTOR - 1637366  
1-ZH20-002-B

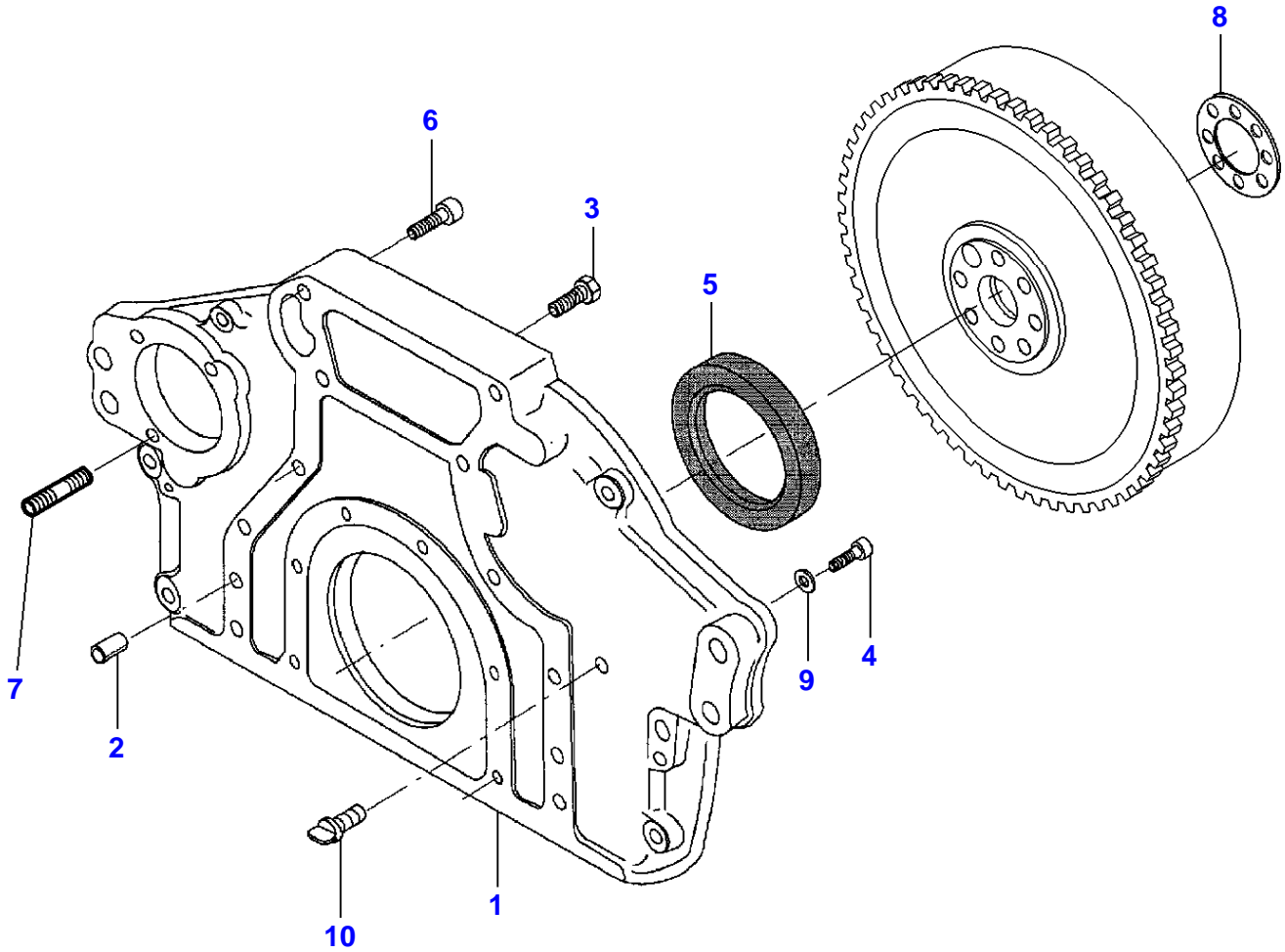
1-ZH20-002-B



## Timing Gear Housing

| Item | Part Number | Qty | Description      | Comments  |
|------|-------------|-----|------------------|---|
| 1    | V836859491  | 1   | Timing Gear Case |   |
| 2    | V836647419  | 1   | Gasket           |   |
| 3    | V528801400  | 17  | Screw            | M8X25   |
| 4    | V529801470  | 1   | Screw            | M8X60   |
| 5    | V598359850  | 4   | Pin              |   |
| 6    | V836647946  | 1   | Gear             |   |
| 7    | V836647937  | 1   | Shaft            | (6)   |
| 8    | V836122756  | 1   | Gear             | (6)   |
| 9    | V610071079  | 2   | Ball Bearing     | (6)   |
| 10   | V836122759  | 1   | Flange           | (6)   |
| 11   | V528801360  | 4   | Screw            | (6)<br>M8X16                                    |
| 12   | V529902720  | 1   | Screw            | M14X85  |
| 13   | V836122758  | 1   | Flange           |   |
| 14   | V836117328  | 1   | Cover            |   |
| 15   | V588204963  | 1   | Plug             |   |
| 16   | V836117329  | 1   | Gasket           |   |
| 17   | V614105880  | 1   | Seal             |   |
|      | V835328899  | X   | Chock            | Thickness 3MM                                   |
| 18   | V836017927  | 1   | Plug             |   |
| 19   | V614603540  | 1   | O Ring           |   |
| 20   | V528801360  | 2   | Screw            | M8X16   |
| 21   | V836120144  | 1   | Cover            |   |
| 22   | V836112272  | 1   | Gasket           |   |
| 23   | V529801460  | 1   | Screw            | M8X55   |
| 24   | V529801560  | 1   | Screw            | M8X105  |
| 25   | V529801500  | 4   | Screw            | M8X75   |
| 26   | V836120989  | 1   | Washer           |   |
| 27   | V836019695  | 2   | Sleeve           |   |
| 28   | V836352823  | 1   | Plate            |   |
| 29   | V836647774  | 1   | Screw            |   |
| 30   | V529801440  | 1   | Screw            | M8X45   |
| 31   | V528801380  | 5   | Screw            | M8X20   |
| 32   | V836117337  | 1   | Cover            |   |
| 33   | V836117338  | 1   | Gasket           |   |
| 34   | V836022077  | 1   | Gasket           |   |
| 35   | V836122076  | 1   | Cover            |   |
| 36   | V500950800  | 3   | Washer           |   |
| 37   | V836015967  | 1   | Washer           |   |
| 38   | V546801860  | 3   | Stud             | M10X55  |
| 39   | V640325018  | 1   | Plug             |   |
| 40   | V615881822  | 1   | Seal             |   |
| 41   | V836859319  | 1   | Support          | MF 8250<br>Up to Serial or Engine Number K xxxx |
|      | V836866087  | 1   | Support          | MF 8250<br>From Serial or Engine Number K xxxx  |
|      | V836866493  | 1   | Support          | MF 8250 XTRA                                    |
| 42   | V528801780  | 4   | Screw            | M10X20  |
| 43   | V529801450  | 2   | Screw            | M8X50   |
| 44   | V529801440  | 4   | Screw            | M8X45   |

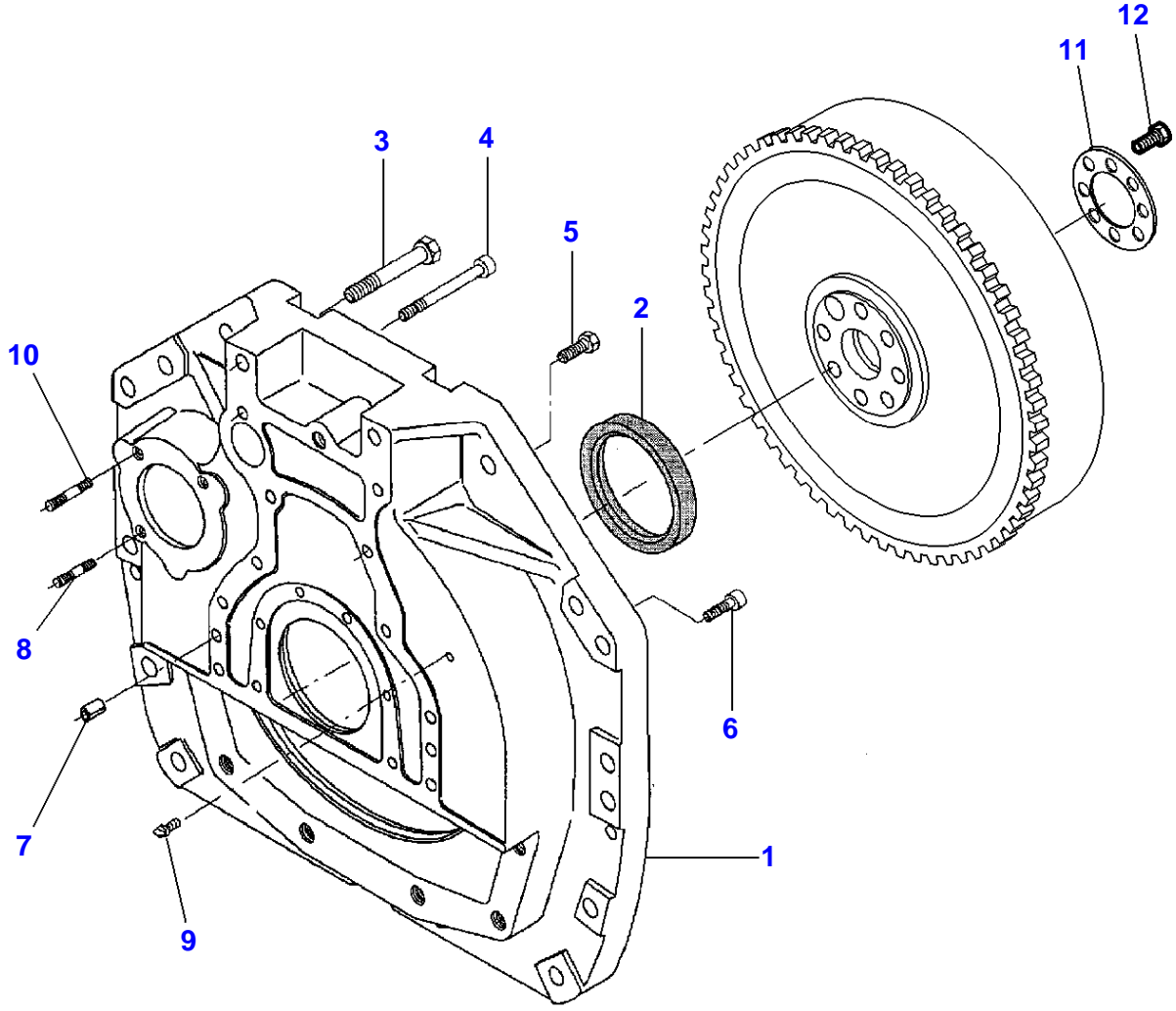
1-ZH21-002-C



## Flywheel Housing - Dynashift

| Item | Part Number      | Qty | Description | Comments      |
|------|------------------|-----|-------------|---------------|
| 1    | V836859247       | 1   | Housing     |               |
| 2    | V598359850       | 2   | Pin         |               |
| 3    | V528902230       | 8   | Screw       | M12X40        |
| 4    | V581705030       | 6   | Screw       | M10X30        |
| 5    | <b>V61450002</b> | 1   | Seal        |               |
|      | V836020054       | X   | Spacer      | Thickness 2MM |
| 6    | V581905470       | 2   | Screw       | M12X50        |
| 7    | V546801840       | 3   | Bolt        | M10X45        |
| 8    | V836355864       | 1   | Ring        |               |
| 9    | V500951000       | 3   | Washer      |               |
| 10   | V836859311       | 1   | Plug        |               |

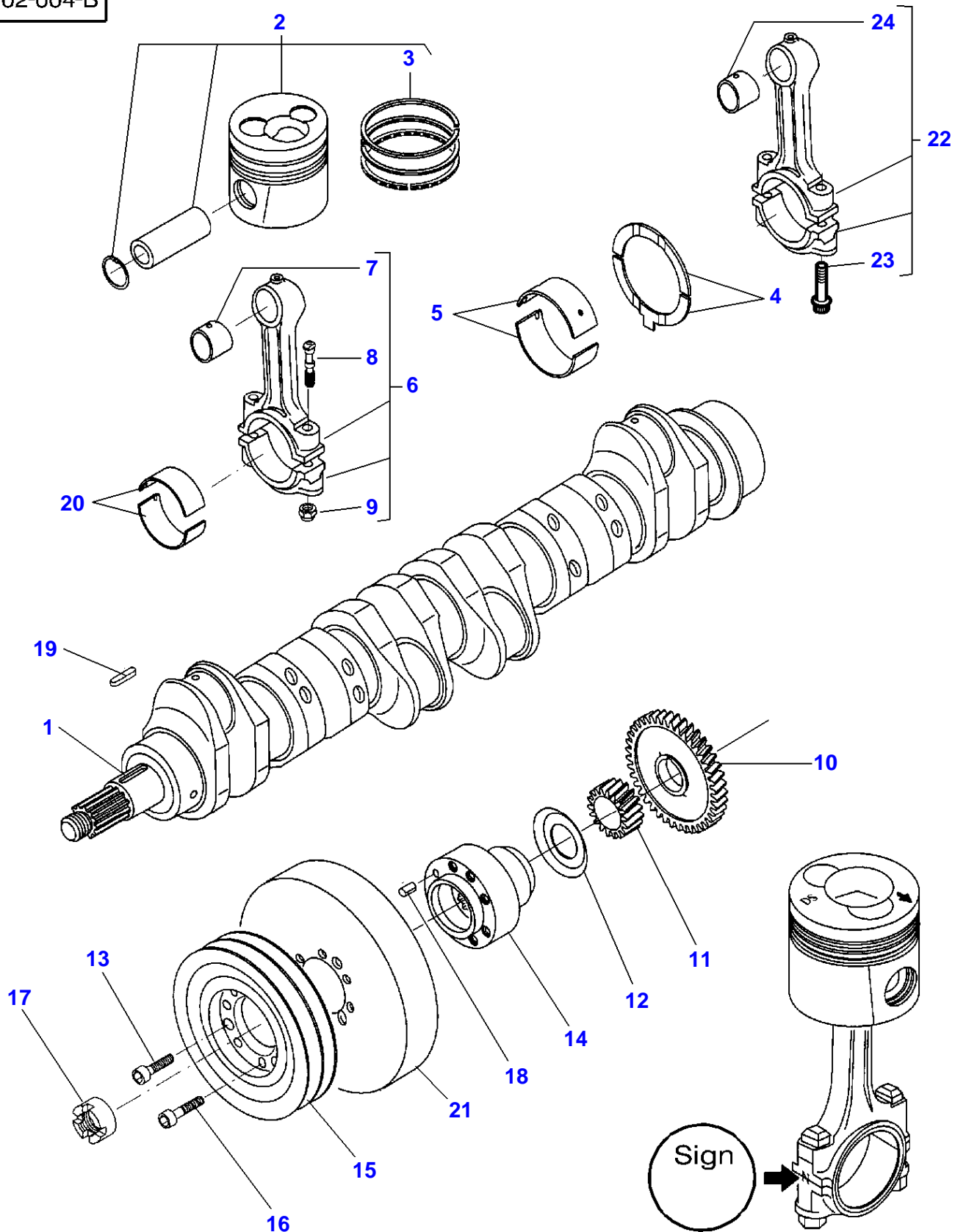
1-ZH21-005-B





| Item | Part Number       | Qty | Description | Comments                  |
|------|-------------------|-----|-------------|---------------------------|
| 1    | V836855925        | 1   | Cover       |                           |
| 2    | <b>V614500002</b> | 1   | Seal        |                           |
|      | V836020054        | X   | Spacer      | Thickness 2MM             |
| 3    | V529803160        | 2   | Screw       | MF 8250<br>M16 X 110      |
|      | V529903160        | 2   | Screw       | MF 8250 XTRA<br>M16 X 110 |
| 4    | V581705580        | 2   | Screw       | M12X110                   |
| 5    | V528902230        | 8   | Screw       | M12X40                    |
| 6    | V581705030        | 6   | Screw       | M10X30                    |
| 7    | V598359850        | 2   | Pin         |                           |
| 8    | V546801800        | 2   | Bolt        | M10X25                    |
| 9    | V836859311        | 1   | Plug        |                           |
| 10   | V836659869        | 1   | Stud        | MF 8250                   |
|      | V546801800        | 1   | Bolt        | MF 8250 XTRA              |
| 11   | V836355864        | 1   | Ring        |                           |
| 12   | V529702290        | 8   | Screw       |                           |

1-ZH02-004-B



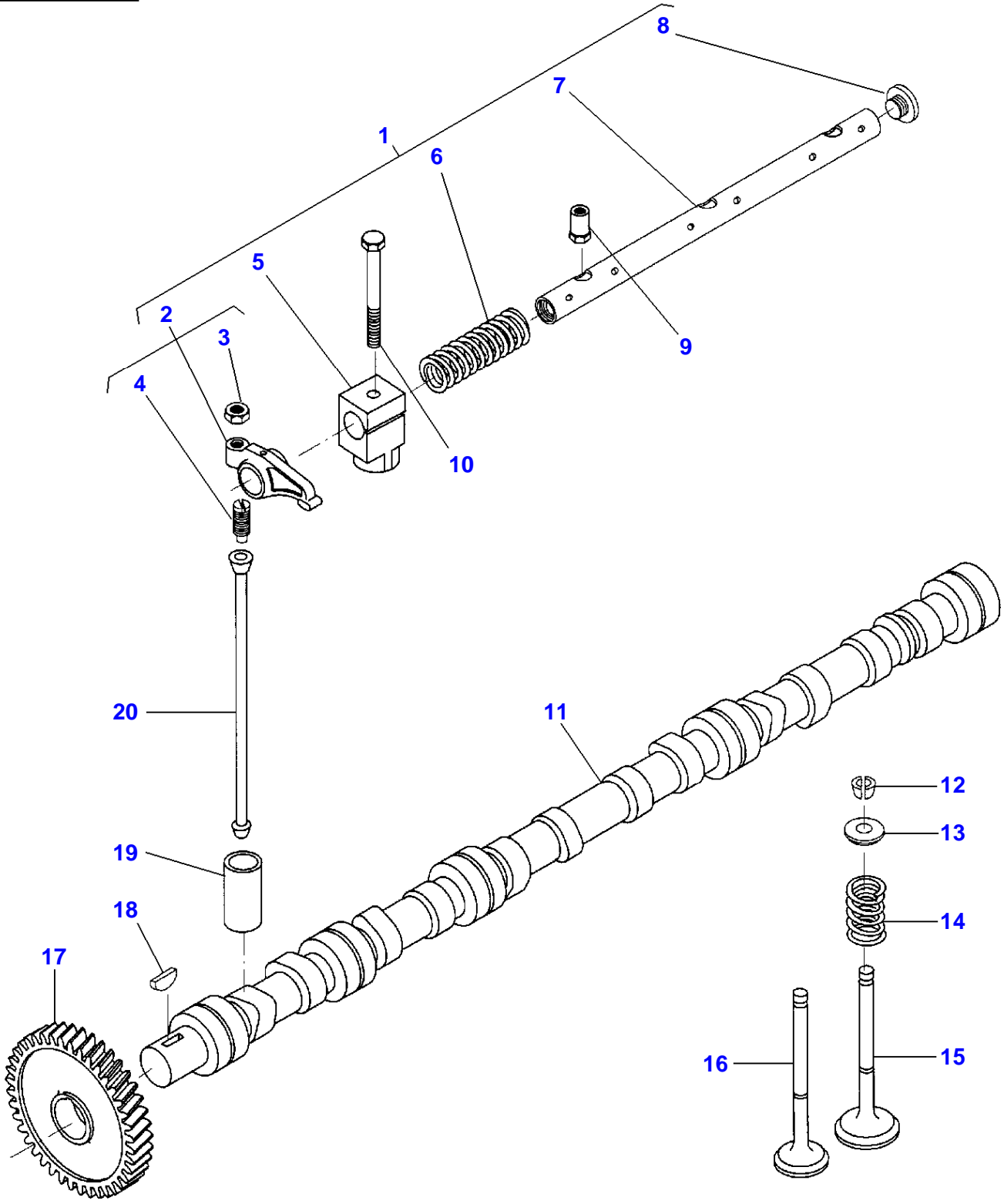
## Crankshaft, Pistons And Connecting Rods

| Item | Part Number       | Qty | Description      | Comments  |
|------|-------------------|-----|------------------|---|
| 1    | V836852281        | 1   | Crankshaft       |   |
| 2    | V836840596        | 6   | Piston           | MF 8250   |
|      | V836866181        | 6   | Piston           | MF 8250 XTRA  |
| 3    | V836640078        | 1   | Kit, Piston Ring | (2)   |
| 4    | V836119459        | 2   | Chock            | STANDARD  |
|      | V836120332        | X   | Thrust Washer    | (-) 0,1MM   |
|      | V836120333        | X   | Thrust Washer    | (-) 0,2MM   |
| 5    | V836655514        | 7   | Main Bearing     | STANDARD<br>Diameter 84,985MM<br>85,020MM   |
|      | V836655536        | X   | Main Bearing     | Diameter 84,735MM<br>84,770MM   |
|      | V836655537        | X   | Main Bearing     | Diameter 84,485MM<br>84,520MM   |
|      | V836655538        | X   | Main Bearing     | Diameter 83,985MM<br>84,020MM   |
|      | V836655539        | X   | Main Bearing     | Diameter 83,485MM<br>83,520MM   |
| 6    | 3638612M1         | 6   | Conrod           | Up to Serial or Engine Number L11211<br>2150-2169g X  |
|      | V836652104        | X   | Conrod           | Up to Serial or Engine Number L11211<br>2170-2189g A  |
|      | V836652105        | X   | Conrod           | Up to Serial or Engine Number L11211<br>2190-2209g B  |
|      | V836652106        | X   | Conrod           | Up to Serial or Engine Number L11211<br>2210-2229g C  |
|      | V836652107        | X   | Conrod           | Up to Serial or Engine Number L11211<br>2230-2249g D  |
|      | V836652108        | X   | Conrod           | Up to Serial or Engine Number L11211<br>2250-2269g E  |
|      | V836652109        | X   | Conrod           | Up to Serial or Engine Number L11211<br>2270-2289g H  |
|      | V836652110        | X   | Conrod           | Up to Serial or Engine Number L11211<br>2290-2309g I  |
|      | <b>V836652111</b> | X   | Conrod           | Up to Serial or Engine Number L11211<br>2310-2329g J  |
|      | V836652112        | X   | Conrod           | Up to Serial or Engine Number L11211<br>2330-2349g K  |
|      | V836840928        | X   | Kit, Conrod      | Up to Serial or Engine Number L11211<br>2350-2369g L<br>Replace and repair. Old not interchangeable with new V836652113 |
|      | V836652114        | X   | Conrod           | Up to Serial or Engine Number L11211<br>2370-2389g M  |
|      | V836652115        | X   | Conrod           | Up to Serial or Engine Number L11211<br>2390-2409g N  |
|      | V836652116        | X   | Conrod           | Up to Serial or Engine Number L11211<br>2410-2429g O  |
|      | V836652117        | X   | Conrod           | Up to Serial or Engine Number L11211<br>2430-2449g P  |
|      | V836652118        | X   | Conrod           | Up to Serial or Engine Number L11211<br>2450-2469g R  |
|      | V836652119        | X   | Conrod           | Up to Serial or Engine Number L11211<br>2470-2489g S  |
|      | V836652120        | X   | Conrod           | Up to Serial or Engine Number L11211<br>2490-2509g T  |
|      | V836652121        | X   | Conrod           | Up to Serial or Engine Number L11211<br>2510-2529g U  |
| 7    | V836646271        | 1   | Bush             | (6)<br>Up to Serial or Engine Number L11211   |
| 8    | V836646204        | 2   | Screw            | (6)<br>Up to Serial or Engine Number L11211   |
| 9    | V836646205        | 2   | Nut              | (6)<br>Up to Serial or Engine Number L11211   |
| 10   | V836119550        | 1   | Pinion           |   |
| 11   | V836122840        | 1   | Pinion           |   |
| 12   | V836122732        | 1   | Ring             |   |
| 13   | V581804620        | 3   | Screw            | M8X25   |
| 14   | V836322586        | 1   | Hub              |   |
| 15   | V836355026        | 1   | Pulley           |   |

## Crankshaft, Pistons And Connecting Rods

| Item | Part Number | Qty | Description | Comments  |
|------|-------------|-----|-------------|---|
| 16   | V581804640  | 6   | Screw       | M8X35   |
| 17   | V836847641  | 1   | Nut         |   |
| 18   | V595954600  | 1   | Pin         |   |
| 19   | V603345110  | 1   | Key         |   |
| 20   | V836110552  | 6   | Bearing     | STANDARD<br>Diameter 67,981MM<br>68,000MM           |
| 20   | V836112762  | X   | Bearing     | Diameter 67,731MM<br>67,750MM                       |
| 20   | V836112763  | X   | Bearing     | Diameter 67,481MM<br>67,500MM                       |
| 20   | V836112765  | X   | Bearing     | Diameter 66,981MM<br>67,000MM                       |
| 20   | V836112767  | X   | Bearing     | Diameter 66,481MM<br>66,500MM                       |
| 21   | V836340689  | 1   | Damper      |   |
| 22   | V836666430  | X   | Conrod      | From Serial or Engine Number L11212<br>1935-1954g F |
| 22   | V836666431  | X   | Conrod      | From Serial or Engine Number L11212<br>1955-1974g V |
| 22   | V836666432  | X   | Conrod      | From Serial or Engine Number L11212<br>1975-1994g X |
| 22   | V836666433  | X   | Conrod      | From Serial or Engine Number L11212<br>1995-2014g Y |
| 22   | V836666434  | X   | Conrod      | From Serial or Engine Number L11212<br>2015-2034g W |
| 22   | V836666435  | X   | Conrod      | From Serial or Engine Number L11212<br>3035-2054g Z |
| 22   | V836666436  | X   | Conrod      | From Serial or Engine Number L11212<br>2055-2074g G |
| 23   | V836864141  | 2   | Screw       | (22)<br>From Serial or Engine Number L11212         |
| 24   | V836110646  | 1   | Bush        | (22)<br>From Serial or Engine Number L11212         |

1-ZH22-001-A



## Valve Mechanism And Camshaft

| Item | Part Number | Qty | Description     | Comments   |
|------|-------------|-----|-----------------|--|
| 1    | V836666610  | 2   | Rocker Shaft    | Replace and repair. Old not interchangeable with new V836655911        |
| 2    | V836666608  | 12  | Rocker          | (1)<br>Replace and repair. Old not interchangeable with new V836655873 |
| 3    | V512861000  | 12  | Nut             | (2)  |
| 4    | V836655866  | 12  | Adjusting Screw | (2)  |
| 5    | V836655869  | 6   | Bracket         | (1)<br>Up to Serial or Engine Number M 5019                            |
|      | V836666609  | 6   | Bracket         | (1)<br>From Serial or Engine Number M 5020                             |
| 6    | V836655884  | 4   | Spring          | (1)  |
| 7    | V836655870  | 2   | Shaft           | (1)  |
| 8    | V836655899  | 4   | Plug            | (1)  |
| 9    | V836655406  | 4   | Nut             |  |
| 10   | V529801910  | 2   | Screw           | M10 X 80   |
| 11   | V836846376  | 1   | Camshaft        | MF 8250  |
|      | V836866054  | 1   | Camshaft        | MF 8250 XTRA   |
| 12   | V836646382  | 24  | Cotter          |  |
| 13   | V836646381  | 12  | Cup             |  |
| 14   | V836646380  | 12  | Spring          |  |
| 15   | V836646356  | 6   | Valve Inlet     |  |
| 16   | V836646357  | 6   | Valve Exhaust   |  |
| 17   | V836647920  | 1   | Gear            |  |
| 18   | V603305760  | 1   | Key             |  |
| 19   | V836014264  | 12  | Tappet          |  |
| 20   | V836655867  | 12  | Rod             |  |

FOOTNOTE [A] FOR VALVE INLET

FOOTNOTE [B] FOR VALVE EXHAUST

**Buy Now**



Our support email:

[ebooklibonline@outlook.com](mailto:ebooklibonline@outlook.com)