

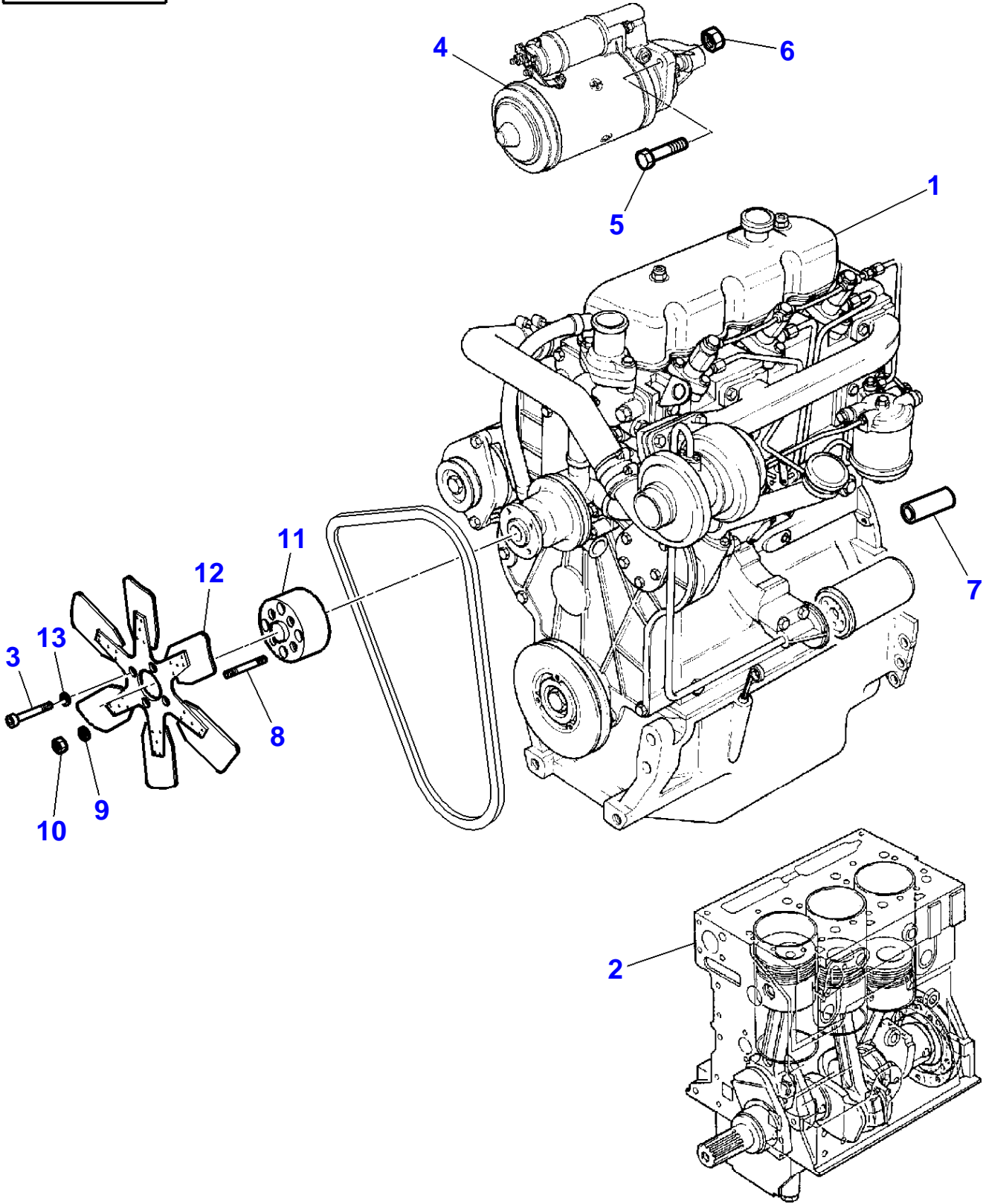
Page Title	Page Number
Engine Installation - M.F 3315 - 903.27 Engine	010-0005
Engine Installation - M.F 3325 - 903.27.T Engine	010-0010
Engine Installation - M.F 3315/25 - Fan Guards & Belts	010-0015
Alternator - M.F 3315/25 - Alternator 65 Amp	010-0020
Alternator - M.F 3315/25 - Versions S-G.E-V-F - 85.A - With Conditioned Air	010-0025
Starter - Magneti Marelli - M.F 3315/25	010-0030
Cylinder Block - M.F 3315/25	010-0035
Crankshaft, Pistons And Connecting Rods - M.F 3315/25	010-0040
Cylinder Head - M.F 3315/25	010-0045
Rocker Shaft - M.F 3315/25	010-0050
Timing Gear And Camshaft - M.F 3315/25	010-0055
Fuel Injection Equipment (Diesel) - M.F 3315/25	010-0060
Lubricating Oil Filler And Breather - M.F 3315/25	010-0065
Lubricating Oil Sump - M.F 3315/25	010-0070
Lubricating Oil Filter And Integral Cooler - M.F 3315 - 903.27 Engine	010-0075
Lubricating Oil Filter And Integral Cooler - M.F 3325 - 903.27.T Engine	010-0080
Water Pump, Thermostat And Heat Exchanger - M.F 3315/25	010-0085
Low Pressure Fuel System - M.F 3315 - 903.27 Engine	010-0090
Low Pressure Fuel System - M.F 3325 - 903.27.T Engine	010-0095
Fuel Filter - M.F 3315/25	010-0100
Fuel System - Pipes - M.F 3315/25	010-0105
Fuel Oil Lift Pump - M.F 3315/25	010-0110
Turbocharger - M.F 3325 - 903.27.T Engine	010-0115
Turbocharger - Pipes And Heat Shields - M.F 3325 - 903.27.T Engine	010-0120
Air Induction And Exhaust System - M.F 3315 - 903.27 Engine	010-0125
Air Induction And Exhaust System - M.F 3325 - 903.27.T Engine	010-0130
Joints And Gaskets - M.F 3315/25	010-0135
Engine Installation - M.F 3330/40	010-0140
Engine Installation - M.F 3330/40 - Fan Guards & Belts	010-0145
Engine Installation - M.F 3350/55	010-0150
Engine Installation - M.F 3350/55 - Fan Guards & Belts	010-0155
Alternator - M.F 3330/40/50/55 - ALTERNATOR 65 A	010-0160
Alternator - M.F 3330/40/50/55 - Versions S-G.E-V-F - 85A A With Conditioned Air	010-0165
Alternator - Iskra 65 A	010-0170
Alternator - Iskra 85 A	010-0175
Starter - Magneti Marelli - M.F 3330/40/50/55	010-0180
Cylinder Block - M.F 3330/50/55	010-0185
Cylinder Block - M.F 3340	010-0190
Crankshaft, Pistons And Connecting Rods - M.F 3330/50/55	010-0195
Crankshaft, Pistons And Connecting Rods - M.F 3340	010-0200
Cylinder Head - M.F 3330/50/55	010-0205
Cylinder Head - M.F 3340	010-0210
Rocker Shaft - M.F 3330/40/50/55	010-0215
Timing Gear And Camshaft - M.F 3330/40/50/55	010-0220
Balancer Unit - M.F 3330/40/50/55	010-0225
Fuel Injection Equipment (Diesel) - M.F 3330/40	010-0230
Fuel Injection Equipment (Diesel) - M.F 3350	010-0235
Fuel Injection Equipment (Diesel) - M.F 3355	010-0240
Lubricating Oil Filler And Breather - M.F 3330/40	010-0245
Lubricating Oil Filler And Breather - M.F 3350/55	010-0250
Lubricating Oil Sump - M.F 3330/40/50/55	010-0255
Lubricating Oil Filter And Integral Cooler - M.F 3330/40	010-0260
Lubricating Oil Filter And Integral Cooler - M.F 3350/55	010-0265
Water Pump, Thermostat And Heat Exchanger - M.F 3330/40/50/55	010-0270
Water Pump, Thermostat And Heat Exchanger - M.F 3330/40/50/55	010-0275
Low Pressure Fuel System - M.F 3330/40/50/55	010-0280
Fuel Filter - M.F 3330/40/50/55	010-0285
Fuel Oil Lift Pump - M.F 3330/40/50/55	010-0290
Fuel System - Pipes - M.F 3330/40/50/55	010-0295
Turbocharger - M.F 3350/55	010-0300
Turbocharger - Pipes And Heat Shields - M.F 3350/55	010-0305
Air Induction And Exhaust System - M.F 3330	010-0310
Air Induction And Exhaust System - M.F 3340	010-0315
Air Induction And Exhaust System - M.F 3350/55	010-0320
Joints And Gaskets - M.F 3330/50/55	010-0325
Joints And Gaskets - M.F 3340	010-0330
Battery & Cables - Version V	010-0335
Battery & Cables - Version F	010-0340

Engine And Equipment

Page010-0000

Battery & Cables - Versions S-G.E	010-0345
Batteries And Cables - Version F.E	010-0350
Cooling System - M.F 3315/25 - Radiator	010-0355
Cooling System - M.F 3315/25	010-0360
Cooling System - M.F 3330/40 - Radiator	010-0365
Cooling System - M.F 3350/55 - Radiator	010-0370
Cooling System - Versions S-G.E-V-F - Up To	010-0375
Cooling System - From	010-0380
Air Conditioner - M.F 3315/25 - Versions S-G.E-V-F	010-0385
Air Conditioner - M.F 3330/40/50/55 - Versions S-G.E-V-F	010-0390
Air Conditioner - Versions S-G.E-V-F	010-0395
Air Compressor - Versions S-G.E-V-F	010-0400
Cab Heating System - Engine Part - M.F 3315/25 - Versions S-G.E-V-F	010-0405
Cab Heating System - Engine Part - M.F 3330/40/50/55 - Versions S-G.E-V-F	010-0410
Fuel System - Fuel Tank	010-0415
Fuel System - Pipes - M.F 3330/40/50 - Up To	010-0420
Fuel System - Pipes - M.F 3330/40/50/55 - From	010-0425
Additional Tank - M.F 3330/40/50 - Up To	010-0430
Additional Tank - M.F 3330/40/50/55 - From	010-0435
Air Filter - Hoses - Sleeve - M.F 3315	010-0440
Air Filter - Hoses - Sleeve - M.F 3325	010-0445
Air Filter - Hoses - Sleeve - M.F 3330/40	010-0450
Air Filter - Hoses - Sleeve - M.F 3350/55	010-0455
Air Filter - Dry - Dual Element	010-0460
Exhaust System - Horizontal - M.F 3315 - 903.27 Engine	010-0465
Exhaust System - Horizontal - M.F 3325 - 903.27.T Engine	010-0470
Exhaust System - Horizontal - M.F 3330/40 - Up To	010-0475
Exhaust System - Horizontal - M.F 3330/40 - From	010-0480
Exhaust System - Horizontal - M.F 3350/55 - Up To	010-0485
Exhaust System - Horizontal - M.F 3350/55 - From	010-0490
Throttle Controls - Up To ...	010-0495
Throttle Controls - From ...	010-0500
Throttle Controls - M.F 3315/25	010-0505
Throttle Controls - Pedals - Versions S-G.E-V-F	010-0510
Throttle Controls - Pedals - Version F.E	010-0515

S-EA02-001-A

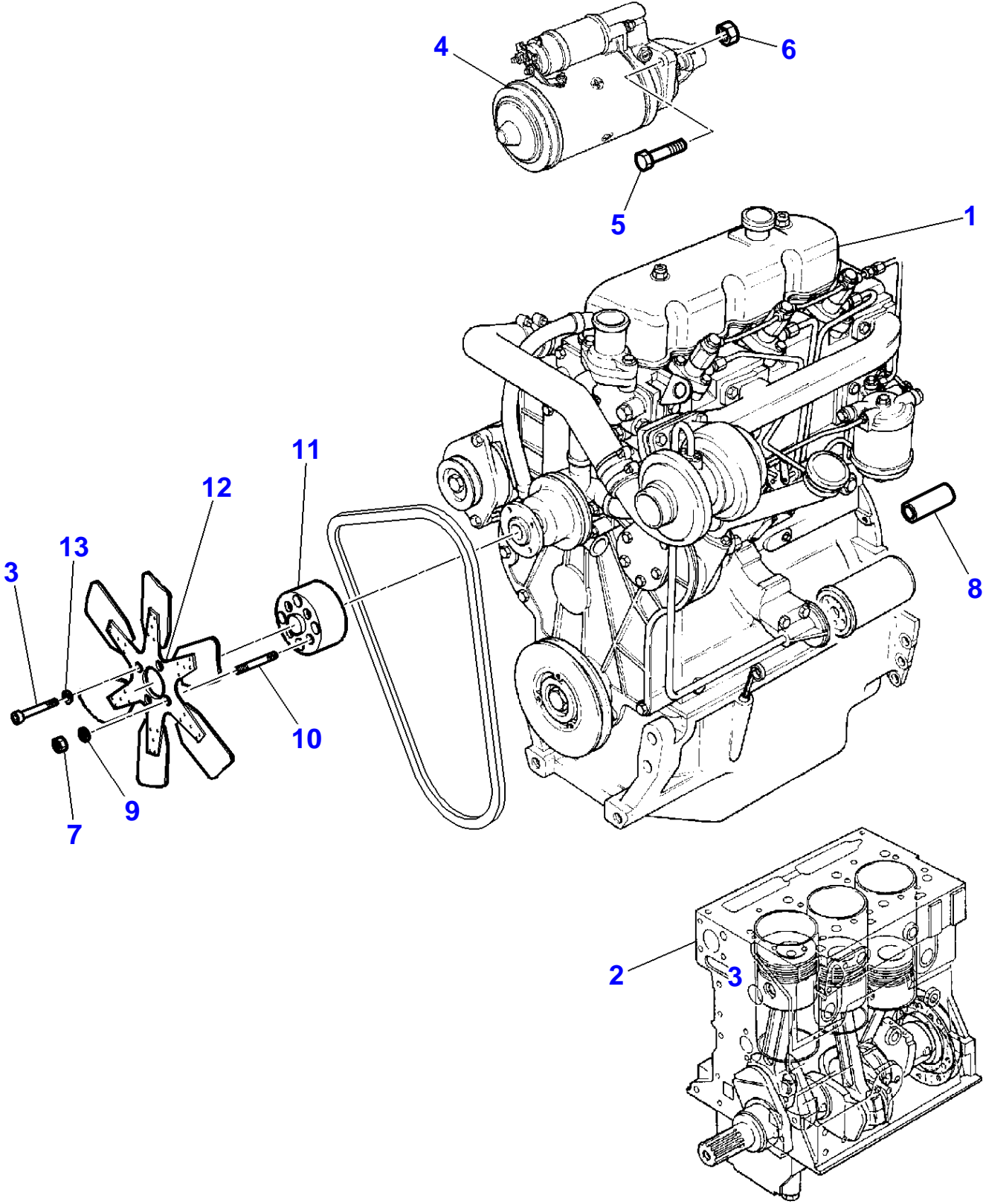


Massey Ferguson**MF 3315 / 3325 / 3330 / 3340 / 3350 / 3355 VSF TRACTORS - 1637397****1637397****Engine Installation - M.F 3315 - 903.27 Engine****Page010-0005**

Item	Part Number	Qty	Description	Comments
1	6.00200.01.0	1	Engine	[A] PEL - CP81241
2	4224113M91	1	Short Engine	
3	2.0312.217.2	4	Screw	M8 X 55
4	4224325M91	1	Startermotor	See Page - Reference Number 010-0030/1
5	4224328M1	1	Screw	
6	3637067M1	1	Nut	
7	0.012.2653.0	2	Dowel	
8	2.0432.001.7	4	Stud	M8 X 16
9	2.1470.004.2	4	Lock Washer	
10	2.1011.305.2	4	Nut	M8
11	0.012.1636.0	1	Spacer	
12	0.007.1545.0	1	Fan	
13	2.1480.014.1	4	Washer	Replace and repair. Old not interchangeable with new 2.1480.014.2

FOOTNOTE [A] OIL FILTER AND FLYWHEEL ARE NOT INCLUDE IN THE ENG INE ASSEMBLY

S-EA02-003-B

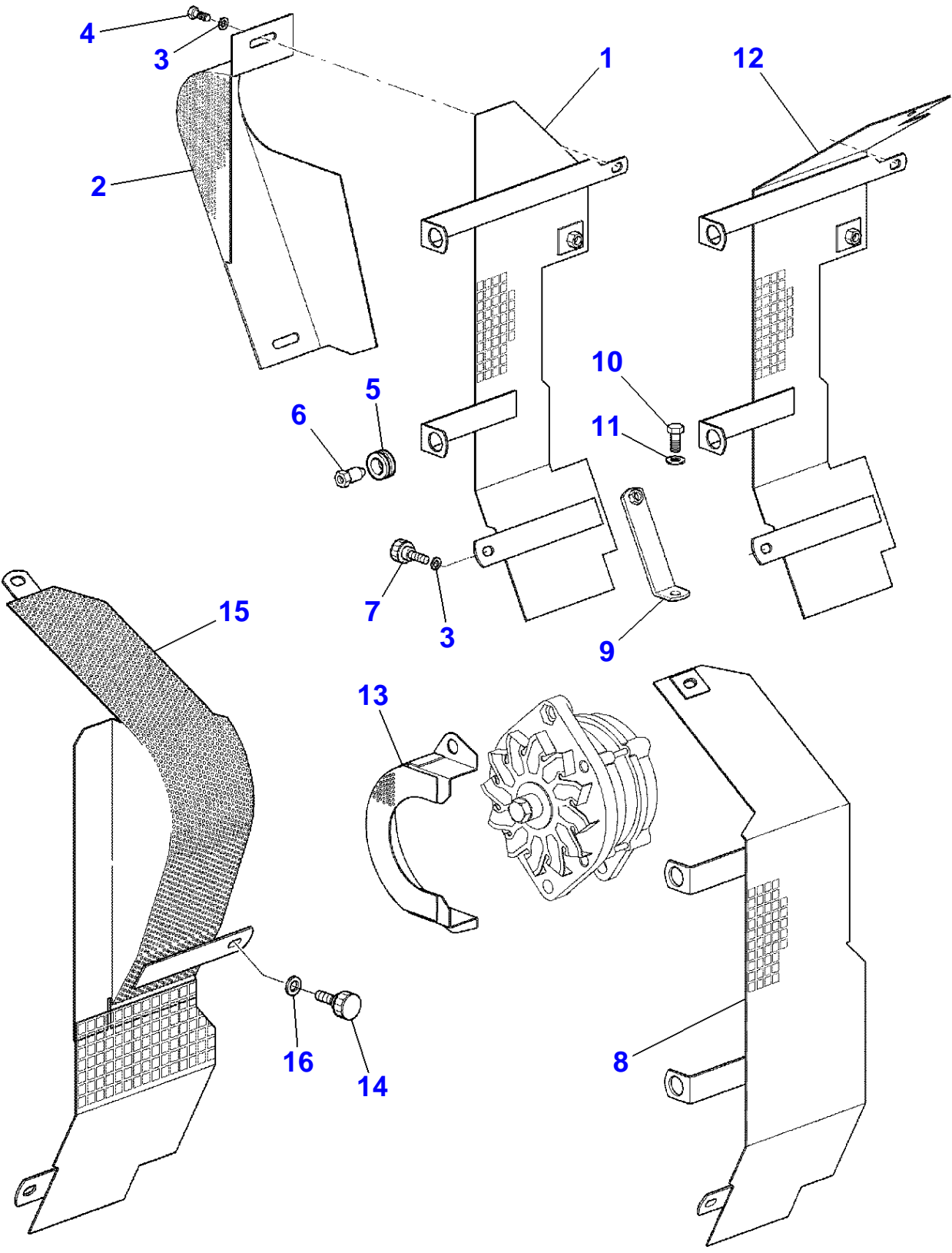


Massey Ferguson**MF 3315 / 3325 / 3330 / 3340 / 3350 / 3355 VSF TRACTORS - 1637397****1637397****Engine Installation - M.F 3325 - 903.27.T Engine****Page010-0010**

Item	Part Number	Qty	Description	Comments
1	6.00100.01.0	1	Engine	[A] PEL - CR81242
2	4224114M91	1	Short Engine	
3	2.0312.217.2	4	Screw	M8 X 55
4	4224325M91	1	Startermotor	See Page - Reference Number 010-0030/1
5	4224328M1	1	Screw	
6	3637067M1	1	Nut	
7	2.1011.305.2	4	Nut	M8
8	0.012.2653.0	2	Dowel	
9	2.1470.004.2	4	Lock Washer	
10	2.0432.001.7	4	Stud	M8 X 16
11	0.012.1636.0	1	Spacer	
12	0.007.1545.0	1	Fan	
13	2.1480.014.1	4	Washer	Replace and repair. Old not interchangeable with new 2.1480.014.2

FOOTNOTE [A] OIL FILTER AND FLYWHEEL ARE NOT INCLUDE IN THE ENG INE ASSEMBLY

S-EA02-005-B

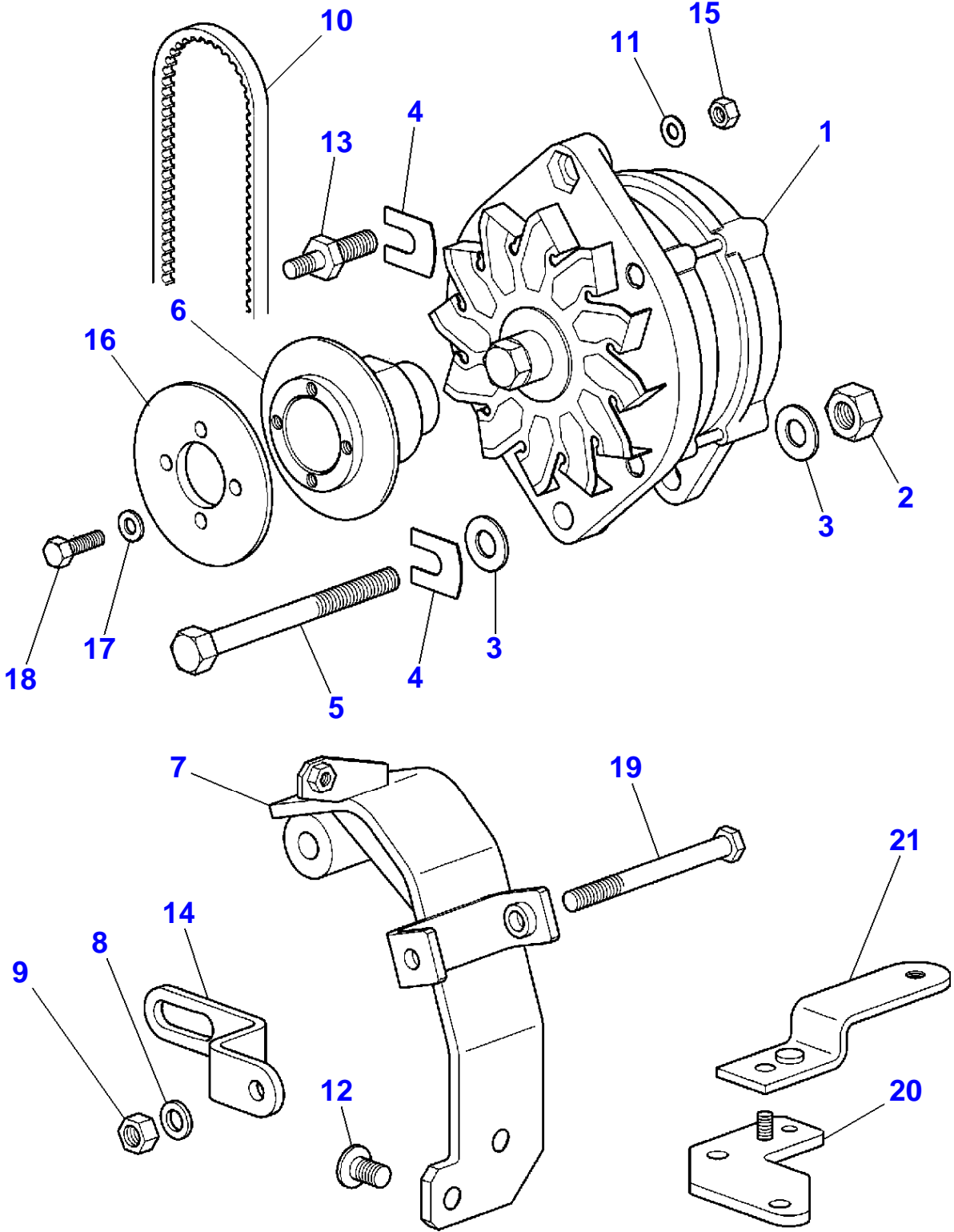


Massey Ferguson**MF 3315 / 3325 / 3330 / 3340 / 3350 / 3355 VSF TRACTORS - 1637397****1637397****Engine Installation - M.F 3315/25 - Fan Guards & Belts****Page010-0015**

Item	Part Number	Qty	Description	Comments
1	0.012.3596.3/1	1	Shield	Right Hand MF 3315
2	0.012.3517.2	1	Guard	
3	2.1310.002.3	4	Flat Washers	6,4 X 12,5
4	2.0112.005.2	2	Screw	M6 X 16
5	2.6560.006.0	4	Grommet	12 X 1,5
6	0.011.0070.0	4	Clevis Pin	
7	0.010.1336.2	2	Knob	
8	0.012.3583.2/1	1	Shield	
9	0.012.3539.3	2	Angle	
10	2.0112.205.2	2	Screw	M8 X 16
11	2.1310.004.2	2	Flat Washers	8,4 X 16
12	0.012.3518.3/1	1	Shield	Right Hand MF 3325
13	0.012.3597.2	1	Guard	
14	0.010.1336.2	3	Knob	[A,B]
15	0.012.3625.2/1	1	Guard	[A,B] Left Hand
16	2.1310.002.2	3	Flat Washers	[A,B] 6,4 X 12,5

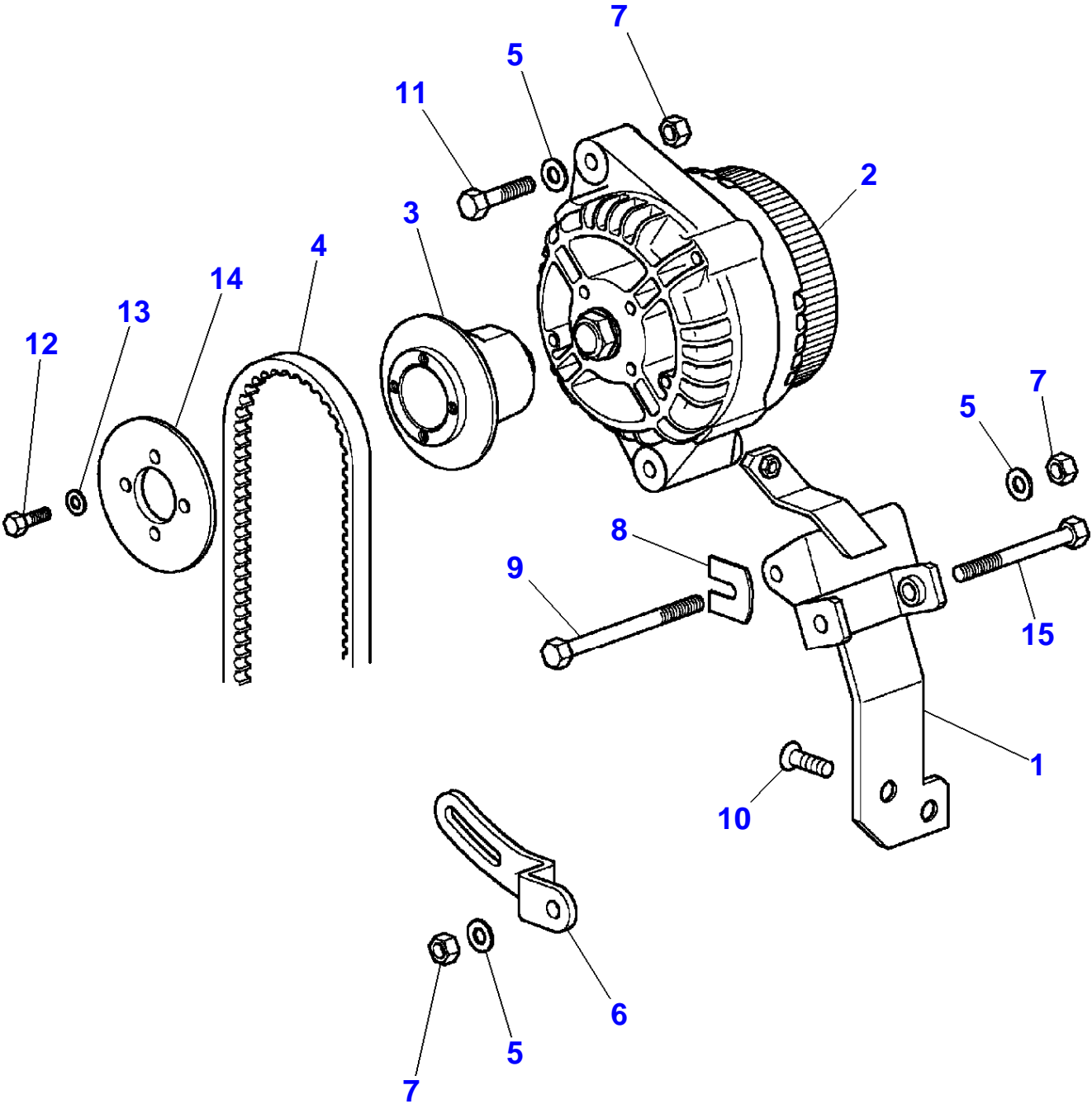
FOOTNOTE [A] WITH CONDITIONED AIR**FOOTNOTE [B] VERSIONS S-GE-V-F**

S-AC33-001-C



Item	Part Number	Qty	Description	Comments
1	2.9439.420.0/1	1	Alternator	65A ISKRA See Page - Reference Number 010-0170/1
2	2.1011.107.2	1	Nut	M12
3	2.1310.007.2	2	Flat Washers	13 X 24
4	0.167.8462.0	4	Shim	Thickness 2 mm
5	2.0112.433.2	1	Screw	M12 X 120
6	0.012.2635.0/1	1	Pulley	
7	0.012.2633.3/1	1	Bracket	
8	2.1310.004.2	3	Flat Washers	8,4 X 16
9	2.1011.105.2	3	Nut	M8
10	2.4119.149.0/1	1	V Belt	
11	390734X1	3	Washer	10,5 X 20 Replace and repair. Old interchangeable with new 2.1310.006.2
12	2.0342.405.2	1	Screw	
13	2.0439.211.2/1	1	Bolt	M10 / M8 Replace and repair. Old not interchangeable with new 2.0439.211.2
14	0.012.2634.0/2	1	Tensioner	
15	2.1011.106.2	1	Nut	M10
16	0.012.3269.0	1	Pulley Half	
17	2.1310.002.3	4	Flat Washers	6,4 X 12,5
18	2.0112.117.2	4	Screw	M6 X 20
19	2.0112.227.2	1	Screw	M8 X 85 Replace and repair. Old not interchangeable with new 2.0112.226.2
20	0.012.9637.3	1	Plate	
21	0.012.9636.2	1	Support	

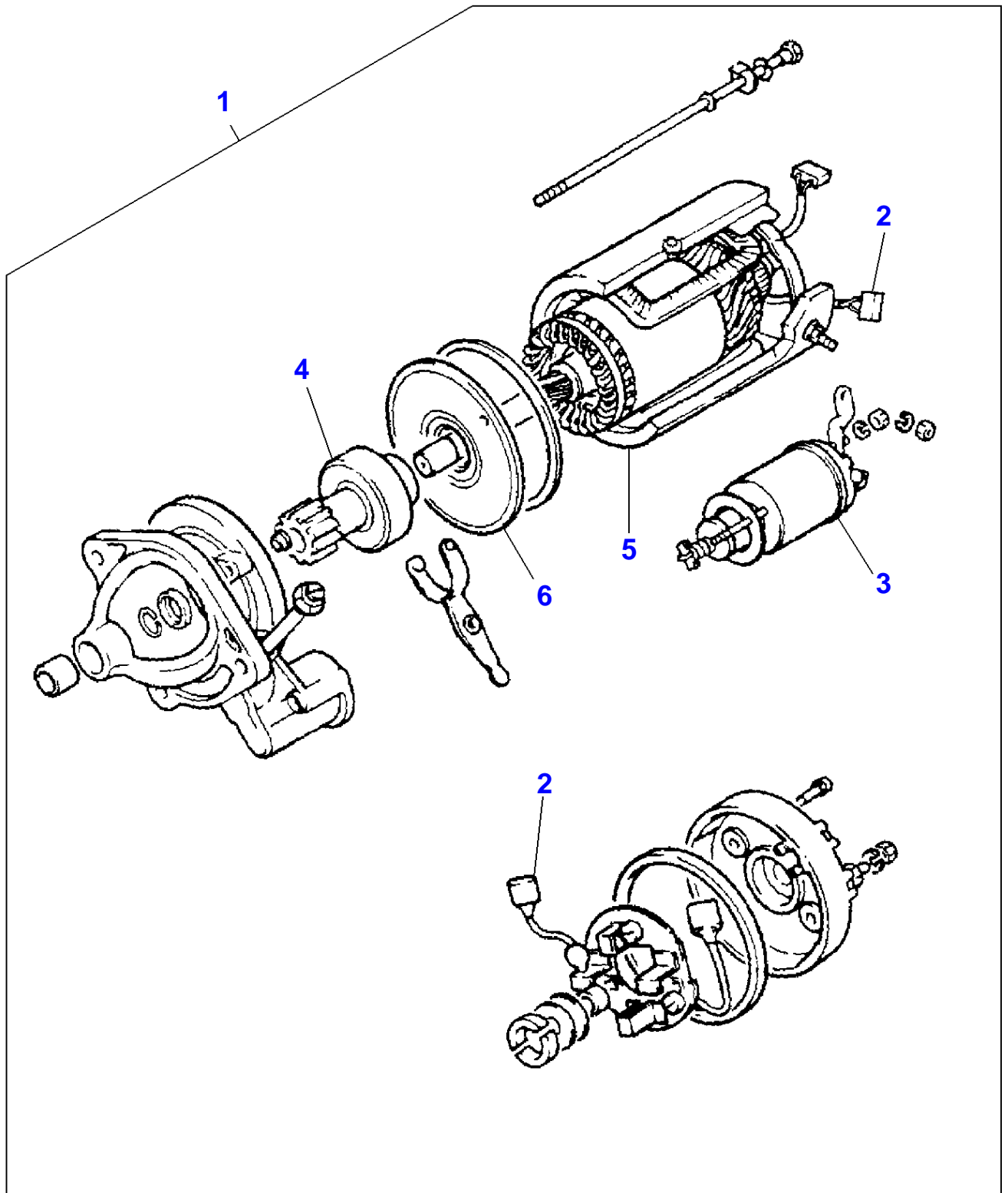
S-AC33-006-B



Massey Ferguson**MF 3315 / 3325 / 3330 / 3340 / 3350 / 3355 VSF TRACTORS - 1637397****1637397****Alternator - M.F 3315/25 - Versions S-G.E-V-F - 85.A - With Conditioned Air****Page010-0025**

Item	Part Number	Qty	Description	Comments
1	0.012.2638.3/1	1	Bracket	
2	2.9439.460.0/1	1	Alternator	85A ISKRA See Page - Reference Number 010-0175/1
3	0.012.2640.0/1	1	Pulley	
4	2.4119.149.0/1	1	V Belt	
5	2.1310.004.2	3	Flat Washers	8,4 X 16
6	0.012.2639.0/2	1	Tensioner	
7	2.1011.105.2	3	Nut	M8
8	0.009.7981.0	1	Shim	
9	2.0112.229.2	1	Screw	M8 X 100
10	2.0342.405.2	2	Screw	
11	2.0112.217.2	1	Screw	M8 X 45
12	2.0112.117.2	4	Screw	M6 X 20
13	2.1310.002.3	4	Flat Washers	6,4 X 12,5
14	0.012.3269.0	1	Pulley Half	
15	2.0112.227.2	1	Screw	M8 X 85 Replace and repair. Old not interchangeable with new 2.0112.226.2

S-EC50-001-A



Massey Ferguson

MF 3315 / 3325 / 3330 / 3340 / 3350 / 3355 VSF TRACTORS - 1637397

1637397

Starter - Magneti Marelli - M.F 3315/25

Page010-0030

Item	Part Number	Qty	Description	Comments
1	4224325M91	1	Startermotor	
2	3901192M91	1	Spring	(1)
3	4224326M1	1	Solenoid	(1)
4	4224327M1	1	Drive Gear	(1)
5	3639792M1	1	Armature	(1)
6	1810615M91	1	Bearing Plate	(1)

Buy Now



Our support email:

ebooklibonline@outlook.com