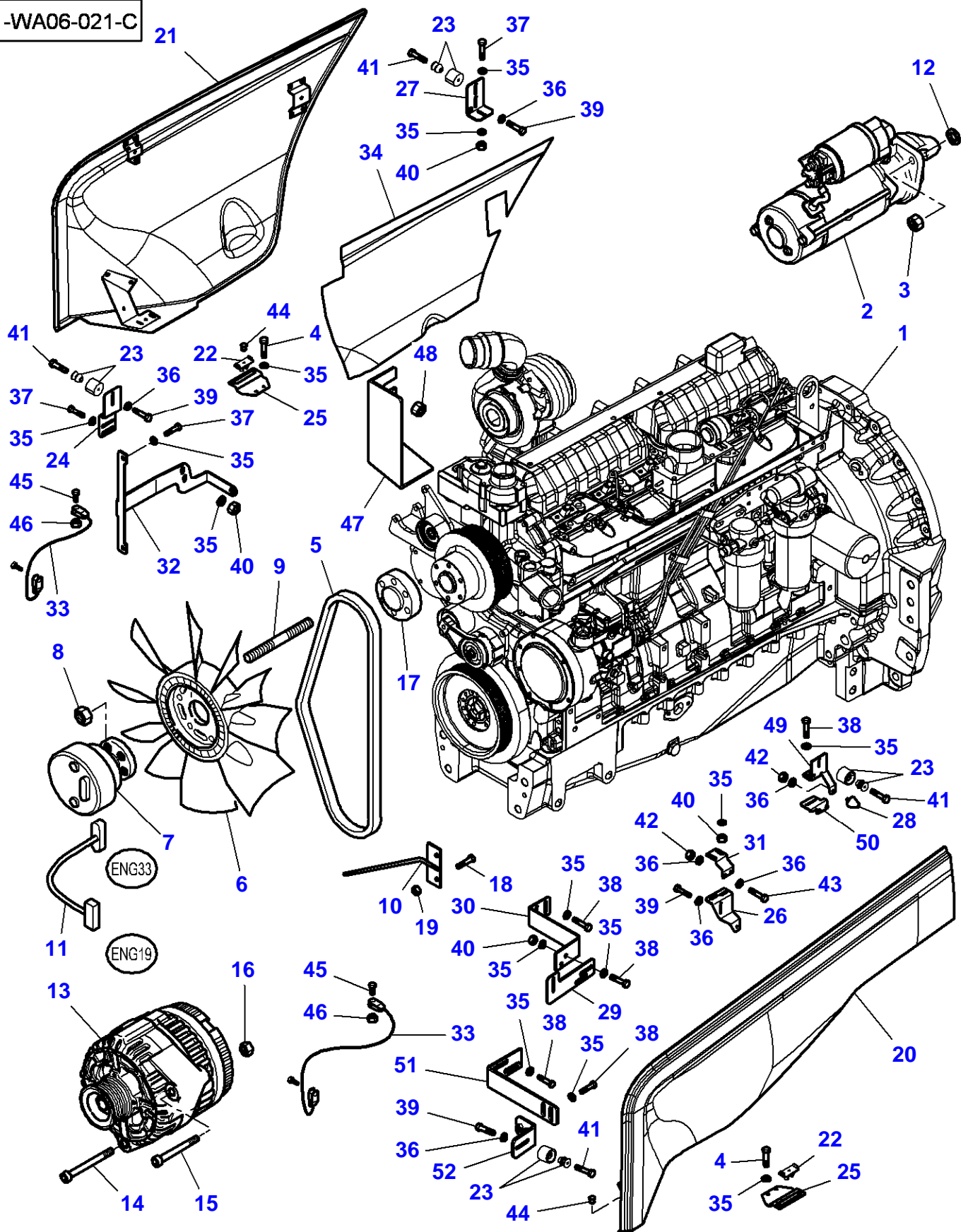


Page Title	Page Number
Engine And Equipment	010-0005
Alternator & Bracket	010-0010
Alternator - 150 Amp	010-0015
Starter	010-0020
Cylinder Block	010-0025
Timing Gear Housing	010-0030
Crankshaft, Piston & Connecting Rods	010-0035
Valve Mechanism And Camshaft	010-0040
Cylinder Head	010-0045
Cylinder Head Cover	010-0050
Oil Sump	010-0055
Lubricating Oil Cooler And Filter	010-0060
Water Pump	010-0065
Injection System	010-0070
Injection System	010-0075
Low Pressure Fuel System	010-0080
Air Induction And Exhaust System	010-0085
Turbocharger - Pipes	010-0090
Electronic Engine Management	010-0095
Engine Repair Kits - Piston- Cylinder Head With Valves	010-0100
Engine Gaskets Sets	010-0105
Heater Engine Block - 110 V	010-0110
Heater Engine Block - 220 V	010-0115
Cab Heating System - Engine Part	010-0120
Fuel Tank & Attachments	010-0125
Additional Tank	010-0130
Fuel Pipes	010-0135
Batteries And Cables - Without Battery Cut-Off W/O Positive Connection	010-0140
Batteries And Cables - Without Battery Cut-Off With Positive Connection	010-0145
Batteries And Cables - With Battery Cut-Off	010-0150
Cooling System - Air Conditioned Installation	010-0155
Compressor	010-0160
Cooling System - Engine	010-0165
Cooling System - Engine	010-0170
Air Cooler	010-0175
Air Filter - Dry - Dual Element	010-0180
Air Filter - Dry - Dual Element	010-0185
Vertical Exhaust On The Side - Not for USA	010-0190
Vertical Exhaust On The Side - For United States of America	010-0195
Throttle Controls	010-0200
Throttle Controls	010-0205

1-WA06-021-C



Engine And Equipment

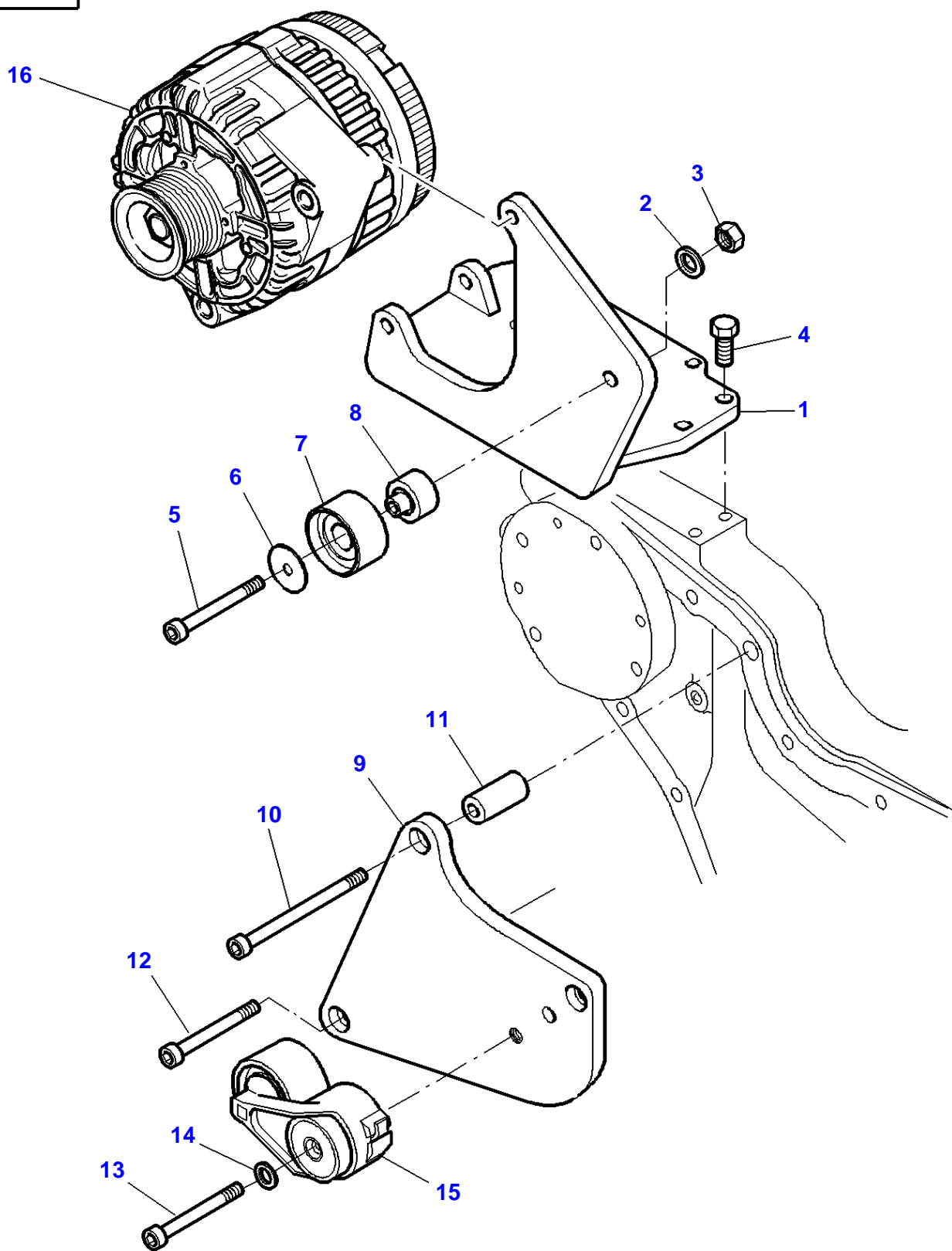
Page010-0005

Item	Part Number	Qty	Description	Comments
1	V832861515	1	Engine	[A] MF 8450 74 ETA
	V862861515X	1	Short Engine	[B] MF 8450
	V832861516	1	Engine	[A] MF 8460 74 ETA
	V862861516X	1	Short Engine	[B] MF 8460
2	3823621M91	1	Startermotor	See Page - Reference Number 010-0020/1
3	339402X1	3	Nut	M10
4	339009X1	4	Hex. Sock. Screw	M8 X 35
5	4275919M1	1	Belt	Length 1940 MM
6	4274231M1	1	Fan	Diameter 650 MM
7	4276064M1	1	Clutch	
8	1441932X1	6	Nut Metric	M10
9	3011353X1	6	Stud	M10 X 52
10	4276881M3	1	Support	
11	4272811M3	1	Harness	
12	3778469M1	1	Spacer	Thickness 15 MM
13	3789453M91	1	Alternator	See Page - Reference Number 010-0015/0 150 AMP
14	339269X1	1	Hex. Sock. Screw	M10 X 100
15	3009502X1	1	Hex. Sock. Screw	M10 X 80
16	339402X1	2	Nut	M10
17	4270818M1	1	Spacer	Thickness 30 MM
18	339560X1	2	Hex. Sock. Screw	M6 X 16
19	339030X1	2	Nut Metric	M6
20	4275844P91	1	Panel	Left Hand
21	4276108P91	1	Panel	Right Hand
22	3800376M1	2	Buffer	
23	72502409	4	Rubber	
24	4270244M5	1	Support	
25	3783047M5	2	Support	
26	4270660M3	1	Support	Up to Serial or Engine Number 30-NOV-2005
27	4270260M2	1	Support	
28	3780947M1	1	Stop	
29	4271215M2	1	Angle.	Up to Serial or Engine Number P167055
30	4274205M1	1	Support	Up to Serial or Engine Number P167055
31	4274206M2	1	Support	Up to Serial or Engine Number 30-NOV-2005
32	3786486M3	1	Angle.	Up to Serial or Engine Number N345073
	4278660M2	1	Angle.	From Serial or Engine Number N345074
33	3783347M2	2	Cable	
34	4275845M1	1	Protector	
35	390972X1	22	Washer	Diameter 8-17 X 1,7
36	390971X1	X	Washer	Diameter 6-12 X 1,5
37	339124X1	5	Hex. Sock. Screw	M8 X 16
38	339761X1	6	Hex. Sock. Screw	M8 X 25
39	391074X1	4	Hex. Sock. Screw	M6 X 12
40	339169X1	7	Nut	M8
41	339804X1	4	Hex. Sock. Screw	M6 X 25
42	339030X1	X	Nut Metric	M6
43	339666X1	2	Hex. Sock. Screw	M6 X 20
44	3010934X1	2	Rivet	
45	339560X1	4	Hex. Sock. Screw	M6 X 16
46	1441500X1	4	Top Locknut	M6
47	4276812M4	1	Cowl	
48	1441932X1	2	Nut Metric	M10
49	4281581M1	1	Support	From Serial or Engine Number 01-DEC-2005
50	4281579M1	1	Support	From Serial or Engine Number 01-DEC-2005
51	4273770M1	1	Support	From Serial or Engine Number P167056
52	4270673M2	1	Support	From Serial or Engine Number P167056

FOOTNOTE [A] INCLUDES FLYWHEEL

FOOTNOTE [B] NOT ILLUSTRATED

1-WA10-007-A



Massey Ferguson

8450 / 8460 TRACTORS (TIER 2) - --->| P297069 / --->| P332013 (except P325039) -
1637447

1637447

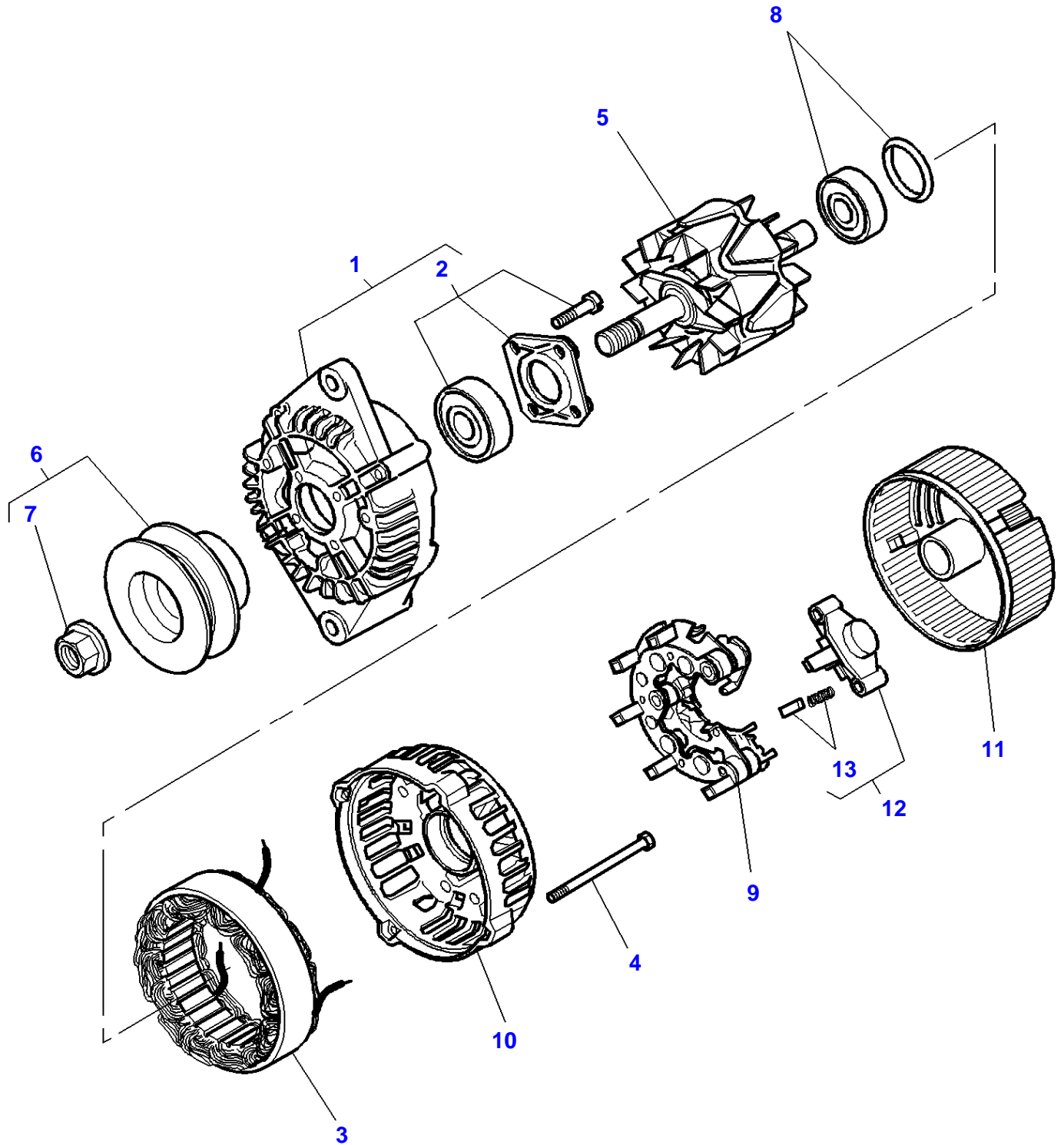
Alternator & Bracket

Page010-0010

Item	Part Number	Qty	Description	Comments
1	V836866853	1	Bracket	
2	V500451202	1	Washer	
3	V510601202	1	Nut	M12
4	V528801800	4	Screw	M10 X 25
5	V581705510	1	Screw	M12 X 70
6	V836866312	1	Flange	
7	V836866570	1	Roller	
8	V836866855	1	Shaft	
9	V836866856	1	Bracket	
10	V581704800	2	Bolt	M8 X 130
11	V836120104	3	Sleeve	
12	V581804710	2	Screw	M8 X 70
13	V581705130	1	Screw	M10 X 80
14	V500951000	1	Washer	
15	V836866320	1	Tightener	
16	3789453M91	1	Alternator	150 AMP

See Page - Reference Number 010-0015/0

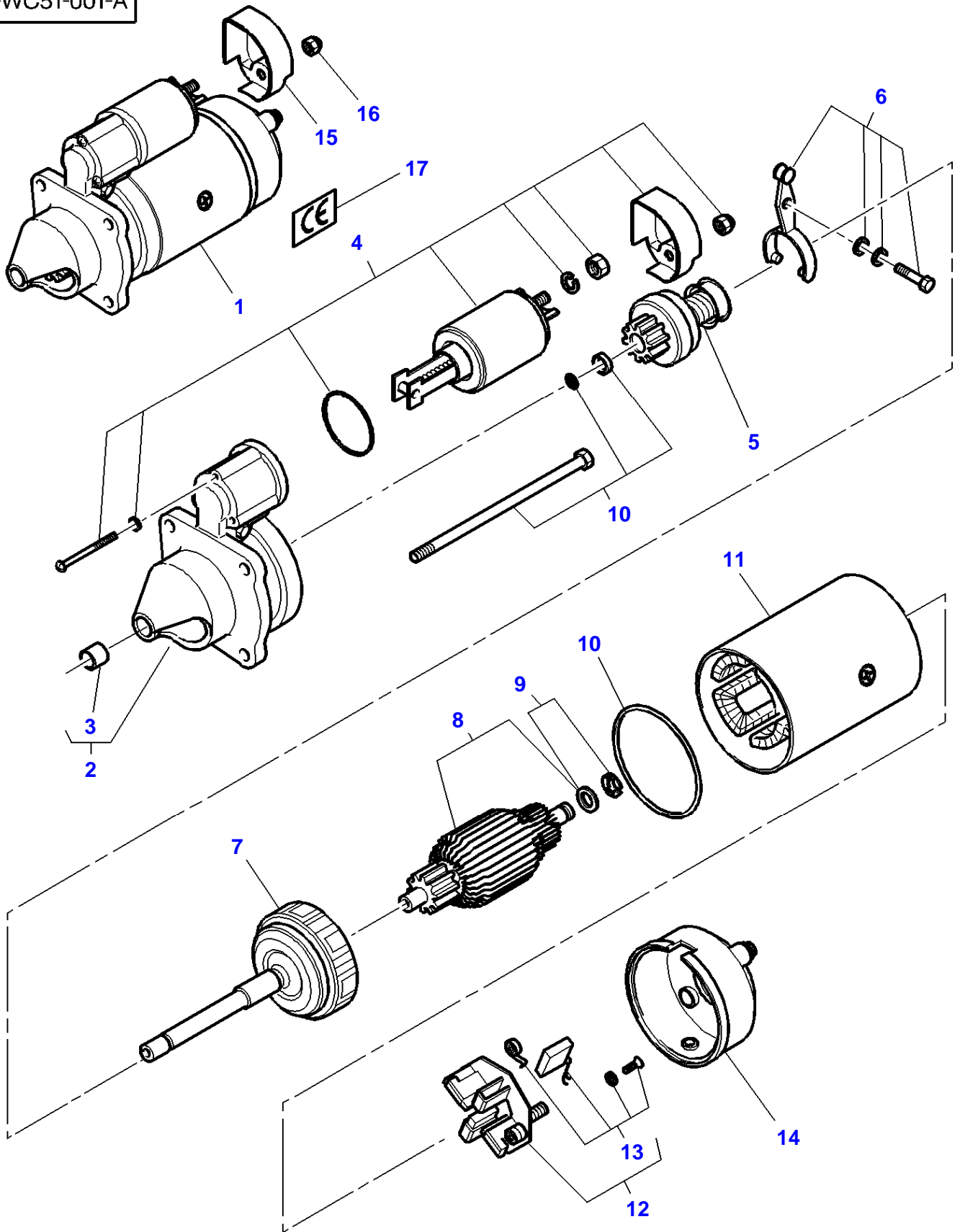
1-WC35-005-B



Alternator - 150 Amp

Item	Part Number	Qty	Description	Comments
	3789453M91	1	Alternator	
1		1	Kit, Drive	Not serviced,order REF. 0
2	3907186M91	1	Kit, Bearing	(1)
3		1	Stator	Not serviced,order REF. 0
4	3907187M1	1	Bolt	
5		1	Rotor	Not serviced,order REF. 0
6	3907189M91	1	Pulley	
7		1	Parts Pack	(6) Not serviced,order REF. 6
8	3907193M91	1	Kit, Bearing	
9	3907190M91	1	Rectifier	
10		1	Housing	Not serviced,order REF. 0
11	3907191M1	1	Cover	
12	3907192M91	1	Regulator	
13		1	Brush	(12) Not serviced,order REF. 12

1-WC51-001-A



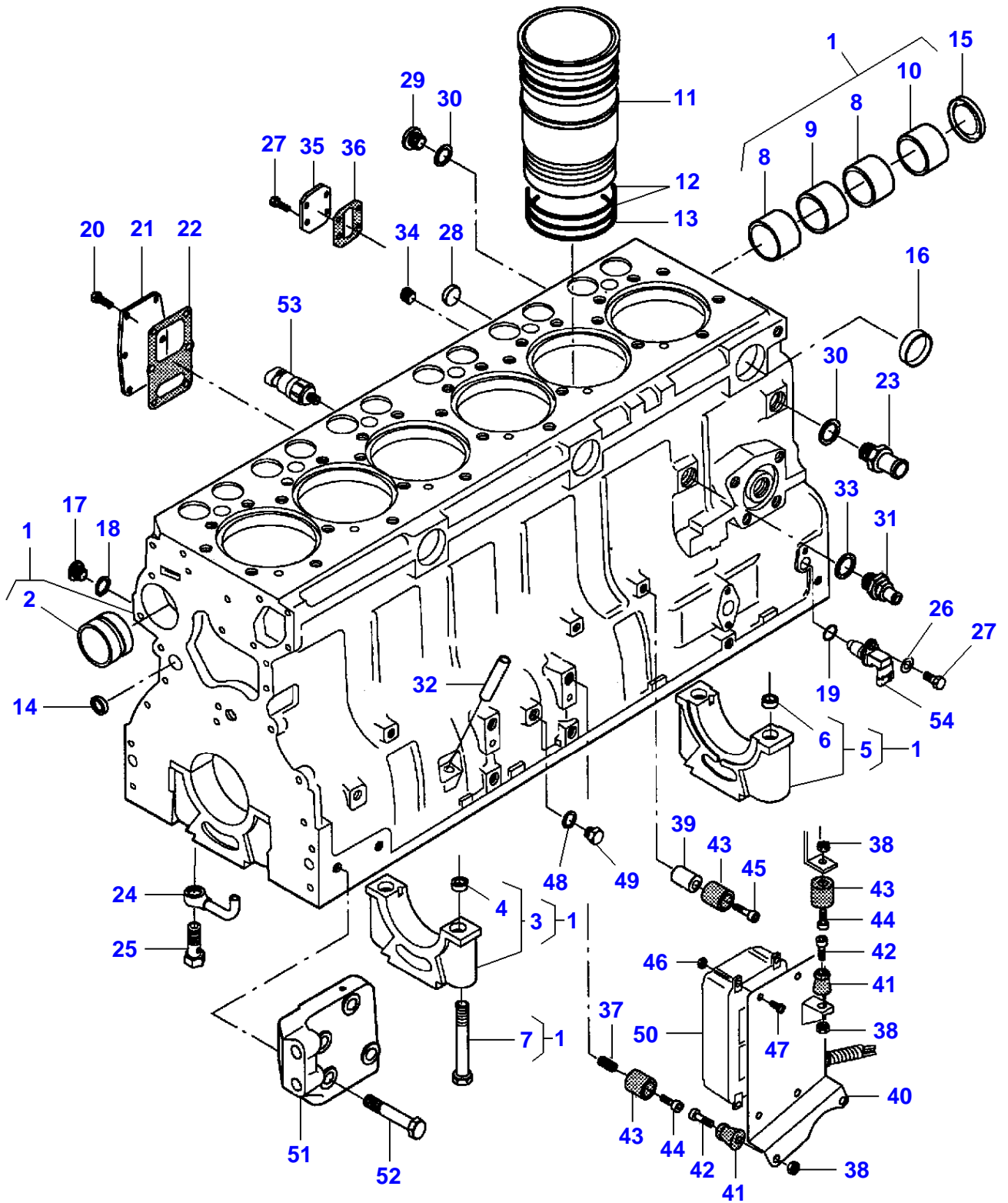
Starter

Page010-0020

Item	Part Number	Qty	Description	Comments
1	3823621M91	1	Startermotor	[A]
2		1	Housing	(1) Not serviced,order REF. 1
3	3903761M1	1	Bearing	(2)
4	3904366M91	1	Kit, Solenoid	(1)
5	3904360M1	1	Drive Gear	(1)
6	3904361M91	1	Kit, Lever	(1)
7		1	Reducer	(1) Not serviced,order REF. 1
8		1	Rotor	(1) Not serviced,order REF. 1
9	3904362M91	1	Kit, Bearing	(1)
10	3904363M91	1	Parts Pack	(1)
11		1	Stator	(1) Not serviced,order REF. 1
12	3904364M91	1	Holder	(1)
13	3904365M91	1	Kit, Brush	(12)
14		1	Cover	(1) Not serviced,order REF. 1
15	3786093M1	1	Protector	
16	3786092M1	1	Nut	M10
17	3788193M1	1	Label	

FOOTNOTE [A] THE APPROPRIATE SAFETY DECALS MUST BE ORDERED AND FITTED TO THIS PART

1-WH01-001-B



Cylinder Block

Page010-0025

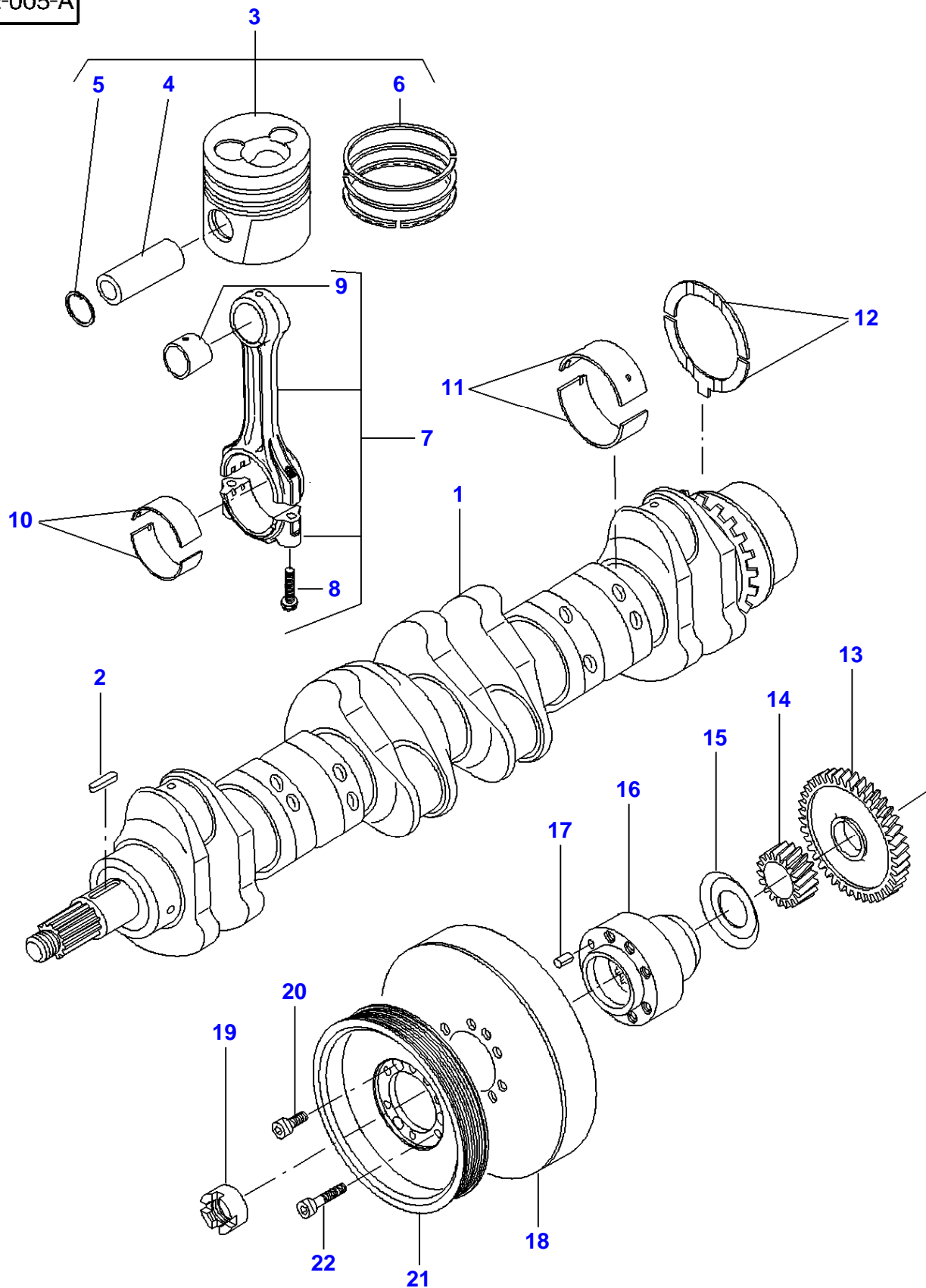
Item	Part Number	Qty	Description	Comments
1	V836866110	1	Cylinder Block	
2	V836866069	1	Bush	(1)
3		6	Bearing Carrier	(1) Not serviced,order REF. 1
4	V836214478	12	Bush	(3)
5		1	Bearing Carrier	(1) Not serviced,order REF. 1
6	V836214478	2	Bush	(5)
7	V529903180	14	Screw	(1)
8	V836852460	2	Bush	(1)
9	V836852459	1	Bush	(1)
10	V836852461	1	Bush	(1)
11	V836666990	6	Liner	
	V836647933	X	Liner	Thickness 9,08 mm
	V836647934	X	Liner	Thickness 9,13 mm
	V836647935	X	Liner	Thickness 9,23 mm
12	V836647502	12	O Ring	
13	V836647503	6	O Ring	
14	V640016016	4	Plug	
15	V836852744	1	Plug	
16	V640016040	3	Plug	
17	V640325110	3	Plug	
18	V615571014	4	Seal	
19	VKH7070	1	O Ring	
20	V528801380	6	Screw	M8 X 20
21	V836847994	1	Cover	
22	V836322852	1	Gasket	
23	V836119837	1	Union	
24	V836855093	6	Pipe	
25	V836338601	6	Valve.	
26	V500050840	1	Washer	
27	V528801362	5	Screw	M8 X 16
28	V640016018	1	Plug	
29	V640325018	1	Plug	
30	V615881822	2	Seal	
31	V836664377	1	Cock	
32	V836014334	1	Pipe	
33	V615881824	1	Seal	
34	V640025010	1	Plug	
35	V836866957	1	Cover	
36	V836866958	1	Gasket	
37	V836859153	1	Nipple	
38	V510600802	4	Nut	M8
39	V836136475	1	Bush	
40	V836867134	1	Bracket	
41	V836666095	3	Knob	
42	V581804630	3	Screw	M8 X 30
43	V836666094	3	Bush	
44	V581804580	2	Screw	M8 X 16
45	V581804640	1	Screw	M8 X 35
46		X	Not Used	
47	V572504172	4	Screw	M6 X 12
48	V615881216	1	Gasket	
49	V640045112	1	Plug	
50		1	Control Unit	See Page - Reference Number 010-0095/1
51		X	Not Used	
52		X	Not Used	
53	V836866613	1	Sensor	See Page - Reference Number 010-0095/3
54	V836866392	1	Eng.Speed Sensor	See Page - Reference Number 010-0095/5

Timing Gear Housing

Page010-0030

Item	Part Number	Qty	Description	Comments
1	V836866410	1	Timing Gear Case	
2	V836647419	1	Gasket	
3	V528801400	17	Screw	M8 X 25
4	V529801470	1	Screw	M8 X 60
5	V598359850	4	Pin	
6	V529801440	8	Screw	M8 X 45
7	V836647946	1	Gear	
8	V836647937	1	Shaft	(7)
9	V836122756	1	Gear	(7)
10	V610071079	1	Ball Bearing	(7)
11	V836122759	1	Flange	(7)
12	V528801360	4	Screw	(7) M8 X 16
13	V529902720	1	Screw	M14 X 85
14	V836122758	1	Flange	
15	V836117328	1	Cover	
16	V588204963	1	Plug	(15)
17	V836117329	1	Gasket	
18	V614105880	1	Seal	
	V835328899	1	Chock	Thickness 3 MM
19	V836017927	1	Plug	
20	V614603540	1	O Ring	
21	V528801360	2	Screw	M8 X 16
22	V836120144	1	Cover	
23	V836112272	1	Gasket	
24	V529801460	1	Screw	M8 X 55
25	V529801560	1	Screw	M8 X 105
26	V529801500	4	Screw	M8 X 75
27	V836120989	1	Washer	
28	V836019695	2	Sleeve	
29	V836352823	1	Plate	
30	V836647774	1	Screw	
31	V615881822	1	Seal	
32	V528801380	5	Screw	M8 X 20
33	V836117337	1	Cover	
34	V836117338	1	Gasket	
35	V836022077	1	Gasket	
36	V836122076	1	Cover	
37	V500950800	3	Washer	
38	V836015967	1	Washer	
39	V546801815	4	Stud	M10 X 30
40	V640325018	1	Plug	

1-WH02-005-A



Buy Now



Our support email:

ebooklibonline@outlook.com