

Page Title	Page Number
ENGINE INSTALLATION - 188	3
ELECTRICAL EQUIPMENT - 188	7
ALTERNATOR - A.13 M.4 PARIS RHONE - 908487M2	11
GENERATOR - C 40 A - 22780 A/B LUCAS	12
STARTER - PARIS RHONE	15
STARTER - LUCAS	16
SPEED LIMITATION - 188	19
RADIATOR	20
FUEL TANK AND ATTACHMENTS - 188	23
FUEL FILTERS AND PIPES	24
FUEL FILTER - 188	27
DRY AIR CLEANER - 188	28
AIR FILTER-OIL BATH AIR FILTER - A.C. DELCO	31
HORIZONTAL EXHAUST	32
EXHAUST VERTICAL	35
THROTTLE CONTROL	36
FOOT THROTTLE CONTROLS - 188	40
SINGLE CLUTCH - 12	43
SINGLE CLUTCH - 12	44
DUAL CLUTCH - 10/12	47
DUAL CLUTCH - 10/12	48
CLUTCH-PEDAL - 188	51
TRANSMISSION CASE - 8	52
CONTROLS AND TRANSMISSION SHIFT LEVERS - 8	56
SPEED GEAR BOX	59
TRANSMISSION HOUSING - SYNCHRO-MESH - 8'	63
SELECTOR MECHANISM - SYNCHRO-MESH TRANSMISSION - 8	64
SYNCHRO-MESH TRANSMISSION - 8	67
TRANSMISSION CASE - MULTI-POWER	72
CONTROLS AND TRANSMISSION SHIFT LEVERS - MULTIPOWER	76
SHIFT CONTROL MULTI-POWER	79
GEAR BOX - MULTIPOWER	80
EPICYCLIC REDUCER - MODELS 168, 185, 188	87
EPICYCLIC REDUCER - MODEL 165	88
EPICYCLIC REDUCER, HEAVY DUTY - MODELS 168, 185, 188	91
SPACER	92
P.T.O. SHIFTER MECHANISM	95
P.T.O. SHIFTER MECHANISM	96
INDEPENDENT P.T.O. HYDRAULIC	99
P.T.O. SHIFTER MECHANISM HYDRAULIC	100
CLUTCH AND VALVE, INDEPENDENT P.T.O. - 188	103
CLUTCH AND VALVE INDEPENDENT P.T.O. - HYBRID - 185	104
CLUTCH AND VALVE I.P.T.O. - (I)	107
DIFFERENTIAL HOUSING - 188	111
DIFFERENTIAL - 188	115
DIFFERENTIAL LOCK - 188	119
REAR AXLE HOUSING	120
REAR AXLE-HOUSING - GERMANY ONLY	124
DRY BRAKES	127
WET BRAKES	128
BRAKE PEDALS & LINKAGE - 188	131
HANDBRAKE	135
DRY BRAKES - GERMANY	136

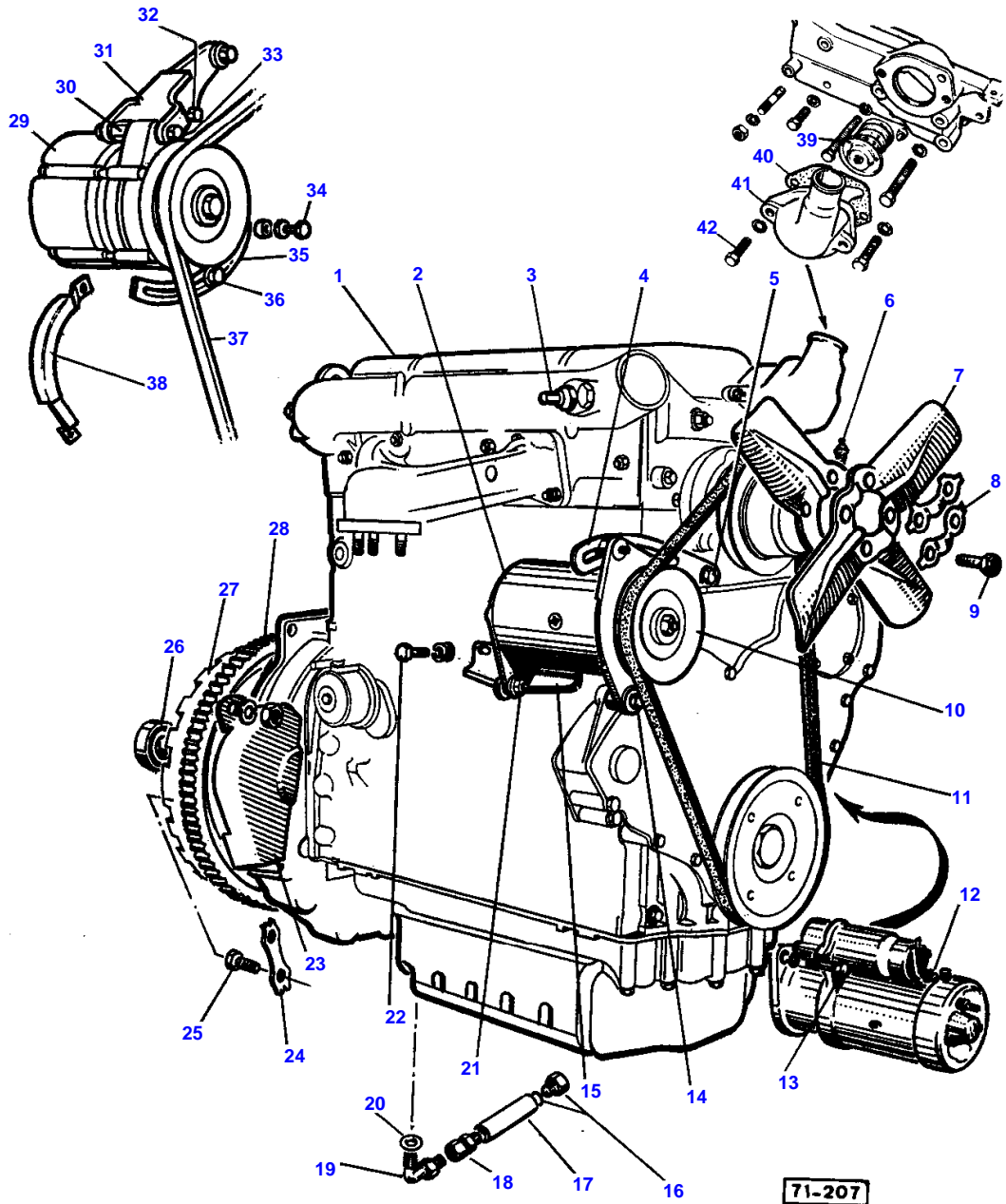
HANDBRAKE (GERMANY)	139
WHEELS - 188	140
POWER ASSISTED VARIABLE TREADWHEELS	144
NORMAL FRONT AXLE	147
HEAVY DUTY FRONT AXLE	151
STEERING GEAR - CAM GEAR - 907746M91	156
STEERING LINKAGE (MANUAL AND POWER)	159
HYDROSTATIC STEERING	160
HYDROSTATIC STEERING VALVE - ORBITROL	164
HYDRAULICS (POWER STEERING) - 188	167
POWER STEERING RAM AND PUMP	168
POWER STEERING PUMP - AIR EQUIPMENT	171
POWER STEERING PUMP - AIR EQUIPMENT NO. W275014 {1} 12-1976	172
POWER STEERING PUMP - AIR EQUIPMENT FROM 01-1977	175
CONVERSION KIT - 188	176
POWER STEERING - CYLINDER - 188	179
HYDROSTATIC STEERING - 4 WHEEL DRIVE	180
SINGLE PUMP - DUAL PUMP DRIVE - 188	183
SINGLE PUMP - 188	184
DUAL HYDRAULIC PUMP - PLESSEY	187
HYDRAULIC PUMP - WARNER MOTIVE	188
HYDRAULIC PUMP-AUXILIARY - AIR EQUIPMENT	192
MULTIPOWER PIPE	195
INDEPENDENT P.T.O. PIPES, MULTIPower TRANSMISSION	199
INDEPENDANT P.T.O. PIPES	200
INDEPENDENT P.T.O. PIPES WITH AUXILIARY HYDRAULIC	203
INDEPENDENT P.T.O., PIPES WITH AUXILIARY HYDRAULIC	204
AUXILIARY HYDRAULICS INTERNAL LINES	207
INDEPENDENT P.T.O., PIPES, MULTI-POWER TRANSMISSION - MODELS 165, 168, 185	208
HYDRAULIC PIPE WITH OIL COOLER	211
OIL COOLER - 188	212
OIL COOLER - MICRONIC FILTRATION - 168	215
HYDRAULIC PIPE, TRAILER BRAKING - MODELS 168, 188	219
BRAKE HYDRAULIC CONTROL VALVE - MODELS 168, 188	220
BRAKE CONTROL CYLINDER - MODELS 168, 188	223
HYDRAULIC LIFT PUMP	224
REPAIR KIT - CONTROL VALVE - 188	231
HYDRAULIC LIFT PUMP	232
PRESSURE CONTROL VALVE - 188	236
HYDRAULIC LIFT COVER - 188	239
CONTROL QUADRANTS	243
CONTROL QUADRANTS	244
PRESSURE CONTROL - RESPONSE CONTROLS - 188	247
LIFT ARMS	251
LINKAGE NORMAL DUTY - MODEL 165	256
LINKAGE NORMAL DUTY - 165-168	260
LINKAGE - HEAVY DUTY	263
LINKAGE - HEAVY DUTY	264
LINKAGE CAT. II - HEAVY DUTY	268
LINKAGE - HEAVY DUTY - CAT II (CONTINUED) - MODELS 185, 188	271
SWINGING DRAWBAR - MODEL 185	275
HITCH - GERMANY ONLY	276
HITCH - GERMANY - NEW MODEL	279

TABLE OF CONTENT

00

HOOK - CRAMER	280
STABILIZERS - MODELS 168, 188	283
FRONT GRILLE - 188	284
HOOD - 188	288
INSTRUMENTS AND PLATES	292
FOOTSTEPS	295
FENDERS - 188, 168	296
SAFETY FRAME - MODELS 168, 188	299
SAFETY FRAME - FRENCH	300
SAFETY FRAME	303
SAFETY FRAME - GERMANY	304
SEAT - 188	307
SEAT - STD LINKAGE	308
TRANSFERS-FRENCH - 188, 168	312
LIGHTING - 188, 168	315
HEAD LAMPS AND TAIL LAMPS - 188, 168	319
FRONT AXLE CONTROL - HYDRAULIC PIPE - MODELS 168, 188	327
FRONT AXLE CONTROL - VALVE BODY - MODELS 168, 188	328
TRANSFER GEAR BOX-4 WHEEL DRIVE - MODELS 168, 188	331
GUARD AND TRANSMISSION SHAFT - 4 WHEEL DRIVE	335
FRONT AXLE 4 WHEEL DRIVE-SUPPORT - MODELS 168, 188	336
STEERING LINKAGE - WITH FRONT AXLE 1971 TYPE	339
FRONT AXLE 1971 TYPE - HOUSINGS - MODELS 168, 188	340
FRONT AXLE 1972 TYPE-HOUSINGS - 2712962M98 {2} W204096	343
FRONT AXLE 1972 TYPE-HOUSINGS	344
FRONT AXLE-DIFFERENTIAL - 1971 TYPE	347
FRONT AXLE 1972 TYPE-DIFFERENTIAL	348
FRONT AXLE 1972 TYPE-DIFFERENTIAL	352
FRONT AXLE FINAL DRIVE - 1971 TYPE	356
FRONT AXLE 1972 TYPE-FINAL DRIVE	360
FRONT AXLE 1972 TYPE-FINAL DRIVE	363

MOTEUR ET ACCESSOIRES (SUITE)
 ENGINE INSTALLATION (CONTINUED)
 MOTOR UND ZUBEHOER (FORTS)
 MOTOR E ACCESSORI (SEGUITO)



ENGINE INSTALLATION - 188

Item	Part Number	Qty	Description	Comments
				188
				185
				168
				165
1	1808131M3	1	Engine	(B) A4.236
				168
	1808130M4	1	Engine	(B) A4.236
				165
	1808503M1	1	Engine	(F, H) A4.212
				165
	1808132M3	1	Engine	(F, H) A4.236
				168
	1869375M1	1	Engine	(A) A4.236
				168
	1808134M3	1	Engine	(B) A4.248
				188
				185
	1808135M3	1	Engine	(F, H) A4.248
				188
				185
	1868838M1	1	Engine	(A) A4.248
				188
	1871830M1	1	Engine	(A, D) A4.248
				188
2	897104M92	1	Dynamo	(E)
3	893501M1	1	Intake Heater	
4	960960M1	1	Lever	
5	353680X1	1	Screw Unc	(U)
	353755X1	1	Washer	
	353446X1	1	Lock Washer	
	353565X1	1	Bolt Unf	(U)
6	963418M1	1	Temp Gauge	
	1650480M1	1	Washer	
7	894729M1	1	Fan	
	894730M1	1	Fan	
8	897057M1	2	Brake	
9	361444X1	4	Screw	
	376127X1	4	Screw	(Y)
				168
	732424M1	1	Fan	(Y, G)
				168
10	960028M1	1	Pulley	(E)
11	960972	1	Belt	
12	1860093M2	1	Startermotor	(E)
	909971M1	1	Startermotor	(C)
				188
13	358005M1	1	Screw	
	361492X1	2	Screw	
	353434X1	3	Lock Washer	
	353431X1	3	Nut Unf	(K)
	353434X1	3	Lock Washer	(K)
14	353527X1	1	Screw	
	960959M1	1	Spacer	
	353755X1	1	Washer	
	353446X1	1	Lock Washer	
	353916X1	1	Nut Unf	
15	960963M91	1	Bearer	
16		1	Plug	(Z)
17	909732M1	1	Tube	(Y)
18	338653X1	1	Union	(Y)
				188

ENGINE INSTALLATION - 188

Item	Part Number	Qty	Description	Comments
19	358762X91	1	Elbow	165 (Y) 188
20	338639X1	1	Bush	165 (Y) 188 165
21	353523X1	1	Bolt Unf	
	353755X1	1	Washer	
	353446X1	1	Lock Washer	
	353916X1	1	Nut Unf	
22	353537X1	2	Screw Unf	
	375706X1	2	Washer	
	353434X1	2	Lock Washer	
23	880301M2	1	Guard	
24	731192M1	3	Tab Washer	
25	354393X1	6	Screw Unf	
26	828123M1	1	Bearing Assy	
27	742106M91	1	Flywheel	(P) INCL. REF. 28
28	731008M1	1	Annular Gear	
29	908847M2	1	Alternator	(C-Y) 188 168
30	906060M1	1	Spacer	(C-Y) 188 168
31	906019M91	1	Bracket	188 168
32	353546X1	1	Screw	188 168
	353756X1	1	Washer	188 168
33	390122X1	1	Bolt Metric	188 168
	339376X1	1	Lock Washer	188 168
	339402X1	1	Nut Metric	188 168
34	353535X1	1	Bolt Unf	188 168
	353755X1	1	Washer	188 168
	731981M1	1	Spacer	188 168
35	609817M91	1	Lever	188 168
36	353521X1	1	Bolt Unf	188 168
	353755X1	1	Washer	188 168
	353446X1	1	Lock Washer	188 168
	353916X1	1	Nut Unf	188 168
37	906022M2	1	Belt	188 168
38	907002M91	1	Cowl	188 168
39	1446127M91	1	Thermostat	(J) 188 185 168
40	735641M1	1	Gasket	188 185 168
41	735312M1	1	Connection	185 168
	736316M1	1	Connection	(Y) 188

MASSEY FERGUSON

MF 165/168/185/188 TRACTORS, |-> (FR) - 1646072

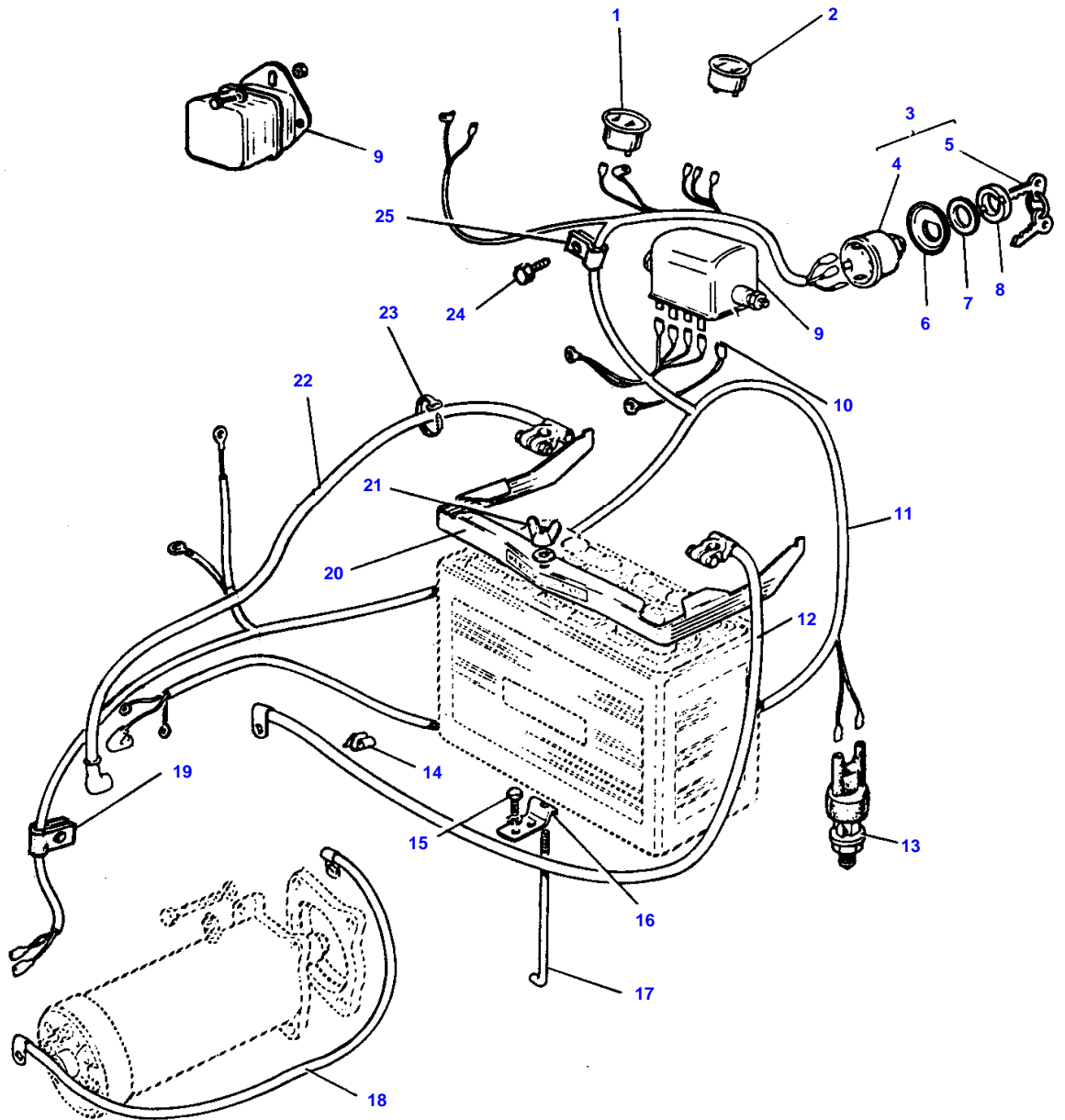
1646072

ENGINE INSTALLATION - 188

3

Item	Part Number	Qty	Description	Comments
42	353542X1	2	Bolt Unf	168 188 185 168
	1650486M1	2	Washer	188 185 168 (A) WITH R.S.I.S. (B) WITHOUT R.S.L.D (C) PARIS RHONE (D) FOR 8 SPEED GEAR BOX (E) CAV - LUCAS (F) WITH R.S.L.D (G) NOT ILLUSTRATED (H) WITH I.P.T.O. (J) Not serviced, order 2485659 (K) FITTING STUDS (P) CLUTCH 10" - 12" (U) WITH GUARD (Y) Four Wheel Drive (Z) SEE ENGINE PARTS BOOK

EQUIPEMENT ELECTRIQUE
ELECTRICAL EQUIPMENT
ELEKTRISCHE ANLAGE
IMPIANTO ELETTRICO



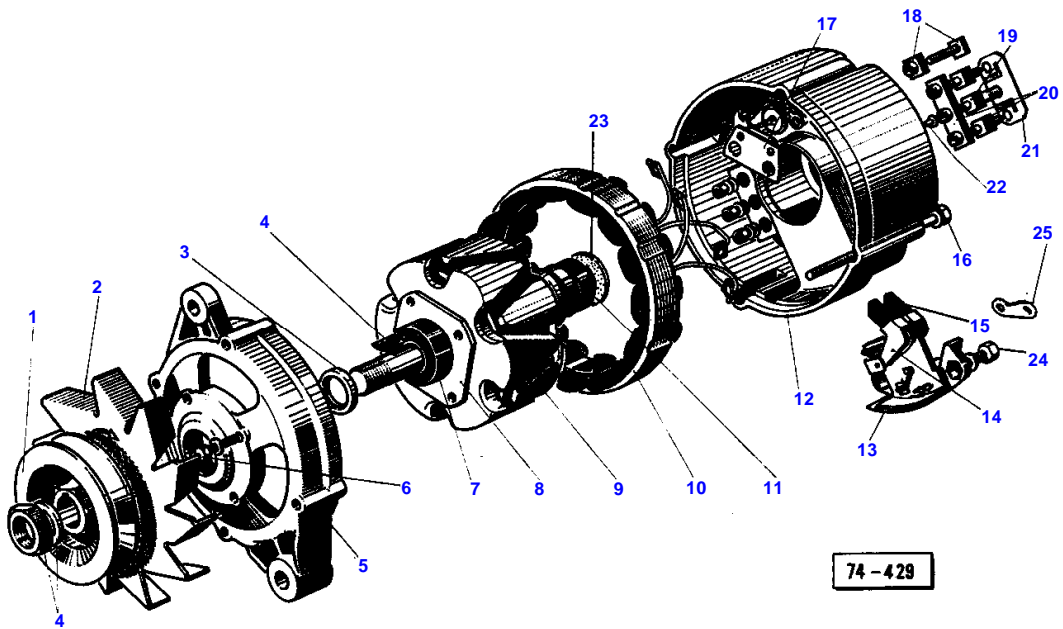
77- 249

ELECTRICAL EQUIPMENT - 188

Item	Part Number	Qty	Description	Comments
				188
				185
				168
				165
1	908427M1	1	Gauge	(M)
2	908430M1	1	Gauge	(E)
	908597M1	1	Bulb	
3	1874120M93	1	Switch, Ignition	INCL. REF. 4, 5
4		1	Switch, Ignition	(U)
5	883930M1	2	Ignition Key	
6	1660754M1	1	Plate	(J)
	1660756M1	1	Plate	(K)
	1660755M1	1	Plate	(L)
7	1443606X1	1	Washer	
8	1662420M1	1	Nut	
9	894835M1	1	Control Box	(C-G)
	906056M1	1	Regulator	(H)
				188
				168
	353502X1	2	Screw Unf	(H)
				188
				168
	16381X	2	Washer	(H)
				188
				168
	353918X1	2	Nut Unf	(H)
				188
				168
10	903078M1	1	Earth Strap	(G)
11	960893M2	1	Harness	(G-S)
	1867834M1	1	Harness	(G-T)
	1808728M1	1	Harness	(H-P)
				188
				168
	1867833M1	1	Harness	(H-T)
				188
				168
12		1	Cable	(V)
13	963417M2	1	Switch	(N)
	849858M1	1	Cap	
14	963714M1	3	Fastener	
15	353666X1	2	Screw Unc	
	353441X1	2	Lock Washer	
16	897069M1	1	Bracket	
17	897067M1	1	Bolt	(A)
				168
				165
	897068M1	1	Bolt	(B)
				188
				185
				168
18	969112M1	1	Cable	(C-G)
19	950235M1	1	Strap	
20	897066M1	1	Clamp	
21	355582X1	1	Nut Unf	
	353754X1	1	Washer	
22		1	Cable	(W)
23	969188M1	2	Clip	
24	353502X1	1	Screw Unf	
	353441X1	1	Lock Washer	
	353918X1	1	Nut Unf	
25	610610M1	1	Clamp	
				(A)
				TEMPERATURE CLIMATE ONLY
				(B)
				COLD CLIMATE ONLY
				(C)
				LUCAS - C.A.V.
				(E)
				SEIGNOL (O.S.)

Item	Part Number	Qty	Description	Comments
				(G)
				LUCAS
				(H)
				PARIS RHONE
				(J)
				IN FRENCH
				(K)
				IN GERMAN
				(L)
				IN ENGLISH
				(M)
				AC DELCO
				(N)
				GABRIEL
				TORRIX
				(P)
				WITH ALTERNATOR
				(S)
				WITHOUT STARTER SOLENOID
				(T)
				WITH GREEN INDICATOR
				(U)
				Not serviced, order 1874120M93
				(V)
				Not serviced, order 2191023K1
				(W)
				Not serviced, order 2191022K1

ALTERNATEUR }
ALTERNATOR } A 13 H.4 PARIS RHONE - 908 487 M2
DREHSTROMGENERATOR }
ALTERNATORE }



MASSEY FERGUSON

MF 165/168/185/188 TRACTORS, |-> (FR) - 1646072

1646072

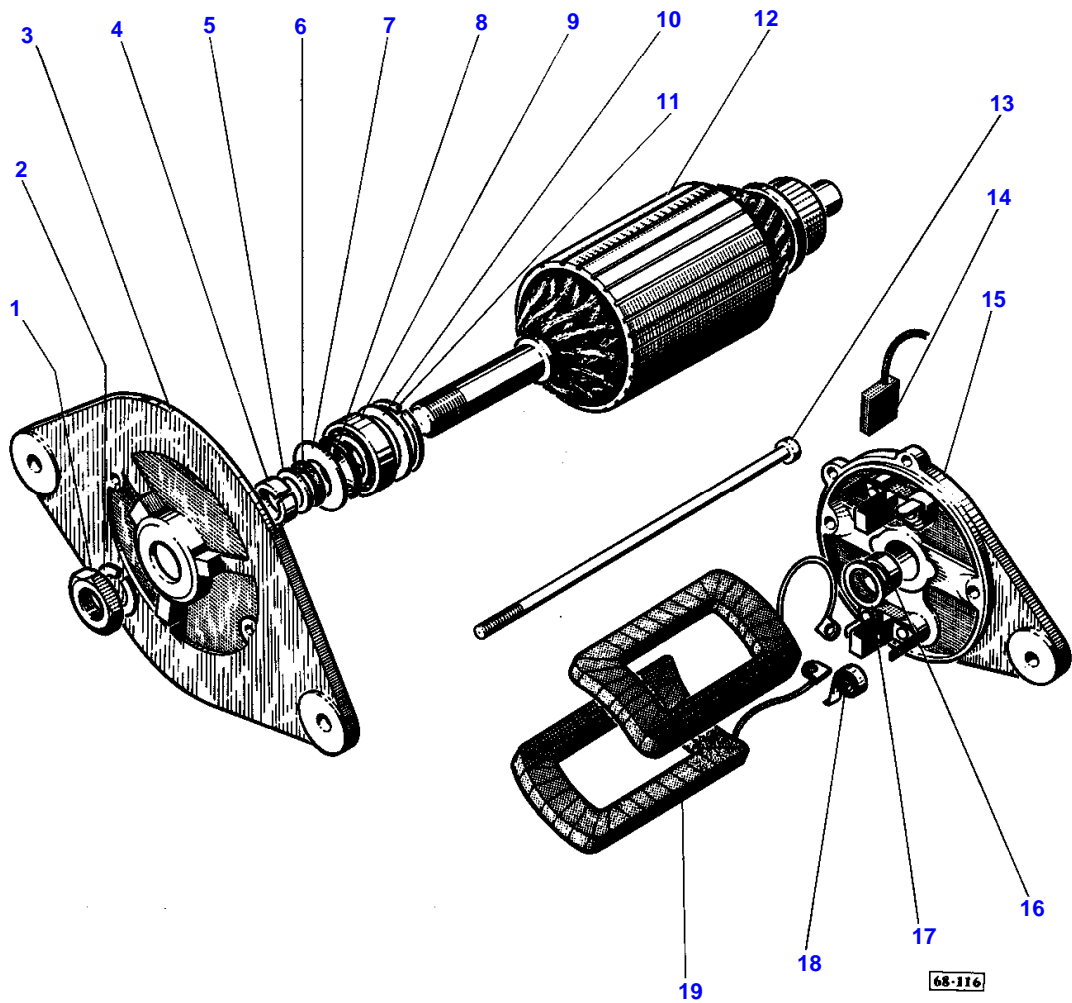
ALTERNATOR - A.13 M.4 PARIS RHONE - 908487M2

11

Item	Part Number	Qty	Description	Comments
				A.13 M.4 PARIS RHONE - 908487M2
				188
				185
				168
				165
1	1805502M1	1	Pulley	
2	1805503M1	1	Fan	
3	1805504M1	1	Spacer	
4	1805505M1	1	Pulley	(B)
	1635843M91	1	Parts Pack	(C)
5	1805506M1	1	Bearing Carrier	INCL. 6,7,8
	1805507M1	1	Bearing Carrier	
6	1805509M1	1	Screw	
7	29963X	1	Bearing	
8	1805508M2	1	Washer	
9	1805511M1	1	Rotor	
10	1807462M1	1	Stator	
11	1805525M1	1	Bearing	
12	1630978M91	1	Bearing Carrier	INCL. 13, 14, 15, 17-21
13	1805514M1	1	Bearing Carrier	INCL. 1806747M1
	1806747M1	1	Joint	(A)
14	1805516M1	1	Holder	
15	1805518M1	1	Brush	
16	1805510M1	1	Screw	
17	1805519M1	1	Condenser	
18	1805520M1	2	Connection	DIA. 5
19	1805521M1	1	Connection	DIA. 6
20	1805522M1	1	Bearer	
21	1630979M1	1	Fuse	
22	1805524M92	X	Plug	
	1645920M1	1	Flap	(A)
23	1630980M1	1	Gasket	
24	1630982M91	1	Screw	
25	1630981M1	1	Union	
				(A)
				NOT ILLUSTRATED
				(B)
				WITH NUT 16-125
				(C)
				WITH NUT 14-150

12

DYNAMO	}	C 40 A - 22780 A/B "LUCAS"	
DYNAMO			
LICHTMASCHINE			897 104 M92
DINAMO			



Imprimé en FRANCE

165-168-185-188

1646 072 M2 (1) 7/77

MASSEY FERGUSON

MF 165/168/185/188 TRACTORS, |-> (FR) - 1646072

1646072

GENERATOR - C 40 A - 22780 A/B "LUCAS"

12

Item	Part Number	Qty	Description	Comments
				C 40 A - 22780 A/B "LUCAS"
				897104M92
				188
				185
				168
				165
1	353426X1	1	Nut Unf	
2	353432X1	1	Lock Washer	
3	1635579M91	1	Bearing Carrier	INCL. 6, 7, 8, 10, 11
4	1024389M1	1	Bush	
5	1016011M1	1	Washer	
6	1635583M1	1	Washer	
7	1635580M1	1	Washer	
8	1635584M1	1	Seal	
9	1440485X1	1	Bearing Ball	
10	1635582M1	1	Washer	
11	1635905M1	1	Circlip	
12	1024026M1	1	Armature	
13	1016014M1	2	Screw	
14	1024034M1	2	Brush	
15	1806157M91	1	Bearing Carrier	INCL. 16, 18, 1024035M1 1016004M1
	1024035M1	1	Greaser	
	1016004M1	1	Plug	
16	829969M1	1	Bush	
17	1016007M1	1	Washer	
18	1024029M91	2	Spring	
19	1024027M91	2	Inductor	INCL. 1024033M91
	1024033M91	2	Terminal	NOT ILLUSTRATED
	1024036M91	1	Parts Pack	

Buy Now



Our support email:

ebooklibonline@outlook.com