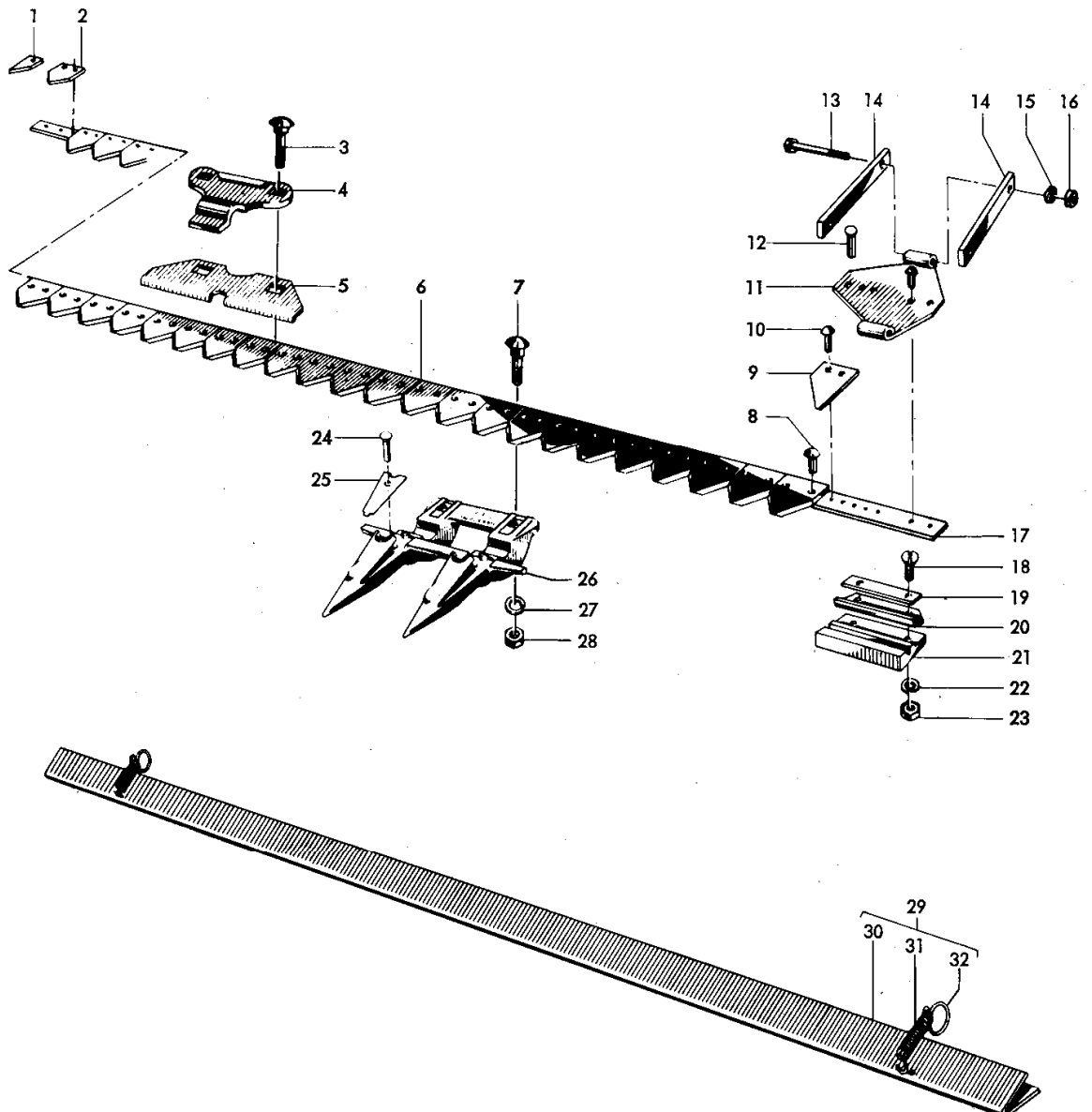


Page Title	Page Number
KNIFE DRIVE	3
KNIFE WOBBLE DRIVE	4
KNIFE DRIVE - CRANK DRIVE	7
KNIFE DRIVE - WOBBLE DRIVE	8
WOBBLE DRIVE	11
REDUCTION	12
REEL DRIVE-HYDRAULIC ADJUSTING	15
REEL AND REEL CARRIER	16
FRONT AUGER	19
FRONT AUGER	21B
TABLE	23
DIVIDER EXTENSION	27
DIVIDERS	28
GUARDS - TABLE - 8' - 10'	29B
JACK - 8' - 10'	29C
CHANNEL	31
FEDER ELEVATOR	32
LINKAGE TABLE CLUTCH	35
REAR BEATER	36
CYLINDER	39
CYLINDER DRIVE	40
GEAR BOX CYLINDER	44
CONCAVE TRAP, STONE	48
CONCAVE ADJUSTMENT	51
SHAKER SHOE	52
PAN	55
SCREEN	56
CLEANING BAGGER-TANKER MACHINES	59
HOUSING CLEANING - BAGGER-TANKER MACHINES	60
PLATFORM - BAGGER-TANKER MACHINES	63
SHAKET SHOE DRIVE	67
FANNING MILL	68
FANNING MILL (CLEANING) - BAGGER-TANKER MACHINES	71
FANNING MILL ADJUSTMENT	72
STRAWWALKERS DRIVE	75
STRAW WALKER	76
MACHINE HOUSING	79
ATTACHING PARTS - MACHINE HOUSING	84
HOOD	88
GRAIN ELEVATOR	91
GRAIN ELEVATOR - BAGGER-TANKER MACHINES	95
GLEANINGS ELEVATOR	99
GRAIN TANK	103
AUGER DIVIDER	107
AUGER LOWER	108
DRIVING SHAFT FOR TANK UNLOADING	111
UNLOADER PIPE	112
CROSS AUGER WITH TUBE BAGGER-TANKER MACHINES	115
ENGINE	119
AIR FILTER - EXHAUST	120
AIR FILTER - EXHAUST	121B
AIR FILTER	121C
AIR FILTER	123
ENGINE FRAME	124
ENGINE COVER	128
ENGINE COVER - BAGGER-TANKER MACHINES	131
RADIATOR ROTATING AIR INTAKE	132
PULLEY ENGINE OUTPUT	135
FUEL TANK AND FUEL LINES	136
ELECTRICAL EQUIPMENT	139
ELECTRICAL EQUIPMENT - LUCAS - FROM SERIAL G1730701	139A
INSTRUMENT PANEL	140
TRACTION DRIVE VARIATOR	143
CLUTCH	144
TRANSMISSION	147
FRONT AXLE	151

TABLE OF CONTENT

FOOTBRAKE - STANDARD	155
FOOTBRAKE - SINGLE WHEEL	159
DRUM BRAKE - FOR STANDARD BRAKE	160
DRUM BRAKE - KNOTT (FOR SINGLE WHEEL BRAKE)	163
DRUM BRAKE - PERROT (FOR SINGLE WHEEL BRAKE)	164
HANDBRAKE	167
MASTER CYLINDER	168
OPERATORS PLATFORM	171
LADDER RAILS	172
SEAT	175
CONTROL PANEL	176
STEERING GEAR AND STEERING CARRIAGE	179
STEERING BOX	180
HYDROSTATIC STEERING - FINLAND	181B
STEERING UNIT-ORBITROL-HYDROSTATIC - HYDROSTATIC	181C
REAR AXLE	183
HYDRAULIC EQUIPMENT	184
HYDRAULIC PUMP WITH OIL CONTAINER	188
OIL CONTAINER AND HYDRAULIC PUMP	189B
OIL CONTAINER	189C
HYDRAULIC (VALVE - PUMP) FOR FINLAND - PUMP-VALVE	189F
HYDRAULIC (VALVE - RAM) - FOR FINLAND	189J
HYDRAULIC PUMP - 1604632M1	189N
VALVE - 417246M1	189O
CONTROL VALVE	191
RAM REEL LIFT	192
RAM (TRACTION)	195
TABLE LIFT	196
RAM TABLE LIFT - 8' - 10'	199
DRIVE BELTS AND CHAINS	200
LIGHTING - TABLE	203
LIGHTING (CABLE)	204
LIGHTING (HEAD LAMP AND TAIL LAMPS)	208
LIGHTING EQUIPMENT - FOR ENGLAND	212
TRANSFERS (TABLE)	215
TRANSFERS-FRENCH	216
TRANSFERS-FRENCH	219
GUARDS-TRANSMISSION	220
TOOLS	227
GUARDS EXPORT	228

MESSER KURBELANTRIEB  
KNIFE CRANK DRIVE  
LAME COMMANDE A MAHIVELLE



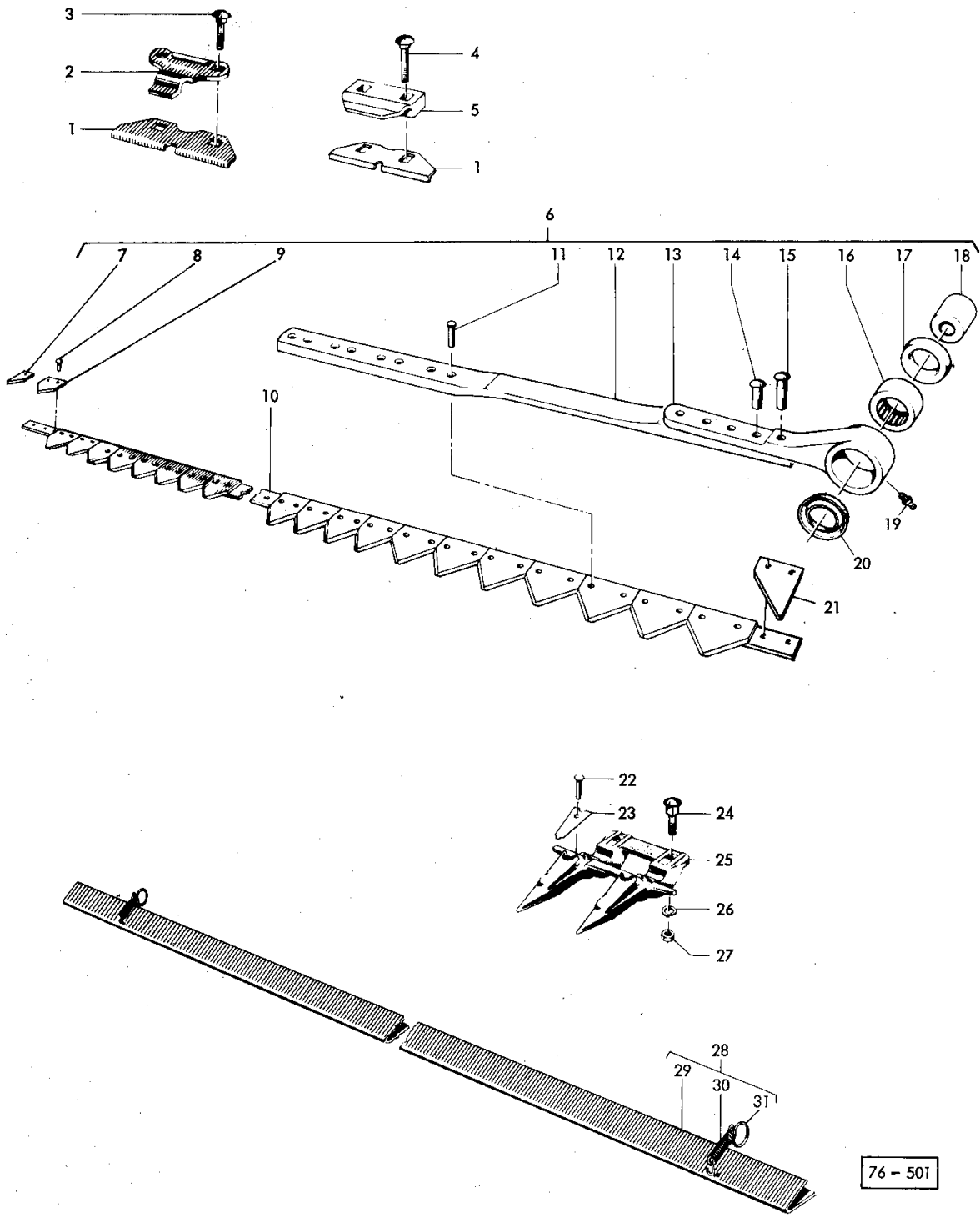
76-500

KNIFE DRIVE

Item	Part Number	Qty	Description	Comments
1	790863M1	2	Section	
2	206236M1	33	Section	
3	1442457X1	16	Bolt Metric	
4	206195M1	8	Clip	
5	206196M1	8	Guide	
6	402320M93	1	Knife	8'
7	1442456X1	18	Screw	
8	391493X1	68	Rivet	
9	647116M1	2	Section	
10	391498X1	4	Rivet	
11	1724499M91	1	Head	
12	339419X1	5	Rivet	
13	339204X1	2	Screw	
14	402321M1	2	Plate	
15	339376X1	2	Lock Washer	
16	339402X1	2	Nut Metric	
17	1724501M1	1	Stem	
18	390640X1	2	Screw Metric	
19	404795M1	1	Plate	
20	404409M1	1	Guide	
21	404410M1	1	Guide	
22	339376X1	36	Lock Washer	
23	339402X1	36	Nut Metric	
24		34		Not serviced, order 26
25		34		Not serviced, order 26
26	609993M91	17	Finger	
27	339534X1	34	Washer Metric	
28	339402X1	34	Nut Metric	
29	402727M91	1	Shield	
30	402728M1	1	Shield	
31	322980M1	2	Spring	
32	322979M1	2	Knotter Hook	

4

MESSER TAUMELANTRIEB  
 KNIFE WOBBLE DRIVE  
 LAME COMMANDE OSCILLANTE

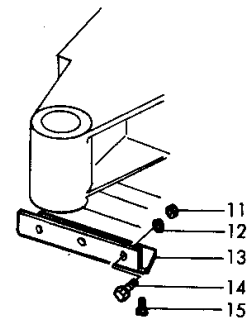
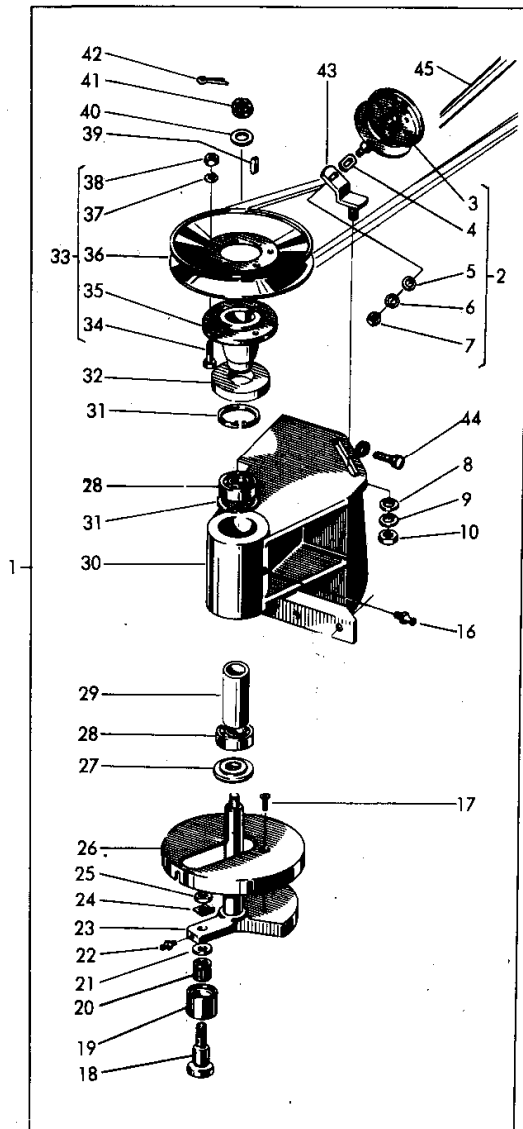


76 - 501

KNIFE WOBBLE DRIVE

Item	Part Number	Qty	Description	Comments
1	206196M1	10	Guide	(A)
	206196M1	8	Guide	(B)
2	206195M1	8	Clip	(A)
	206195M1	6	Clip	(B)
3	1442457X1	16	Bolt Metric	(A)
	1442457X1	12	Bolt Metric	(B)
4	1441671X1	2	Bolt Metric	(A, B)
5	786506M1	1	Clip	(A, B)
6	1723545M91	1	Knife	10' (A)
	1723543M92	1	Knife	8" (B)
	1724686M91	1	Knife	INCL. REF. 10, 13, 21 (B)
7	790863M1	2	Section	(A)
	790863M1	1	Section	(B)
8	391493X1	74	Rivet	(A)
	391493X1	62	Rivet	(B)
9	206236M1	39	Section	(A)
	210987M1	33	Section	(B)
10	1724506M1	1	Support	(A)
	1724505M1	1	Bearer	(B)
11	36493X	8	Rivet	(A, B)
12	785583M1	1	Spring	(A, B)
13	785584M1	1	Head	(A, B)
14	29140X1	4	Rivet	(A, B)
15	29142X	1	Rivet	(A, B)
16	883083M1	1	Bearing Needle	(A, B)
17	831225M1	1	Seal	(A, B)
18	239242M1	1	Roller	(A, B)
19	13811X	1	Grease Nipple	(A)
	200191M1	1	Nipple	(B)
20	831225M1	1	Seal	(A, B)
21	647116M1	1	Section	(A, B)
22		40		Not serviced, order 25 (A)
22		34		Not serviced, order 25 (B)
23		40		Not serviced, order 25 (A)
23		34		Not serviced, order 25 (B)
24	1442456X1	22	Screw	(A)
	1442456X1	20	Screw	(B)
25	609993M91	20	Finger	(A)
	609993M91	17	Finger	(B)
26	339534X1	40	Washer Metric	(A)
	339534X1	34	Washer Metric	(B)
27	339402X1	40	Nut Metric	(A)
	339402X1	34	Nut Metric	(B)
28	402727M91	1	Shield	(B)
	402729M91	1	Guard	(A)
29	402728M1	1	Shield	Not serviced, order 28 (B)
	402730M1	1	Shield	Not serviced, order 28 (A)
30	322980M1	2	Spring	(A, B)
31	322979M1	2	Knotter Hook	(A, B)
				(A)
				SERATED VERSION
				(B)
				1 SERATED VERSION + 1 SMOOTH VERSION

MESSERANTRIEB KURBELANTRIEB  
 KNIFE DRIVE CRANK DRIVE  
 COMMANDE DE LAME COMMANDE A MANIVELLE



78-82

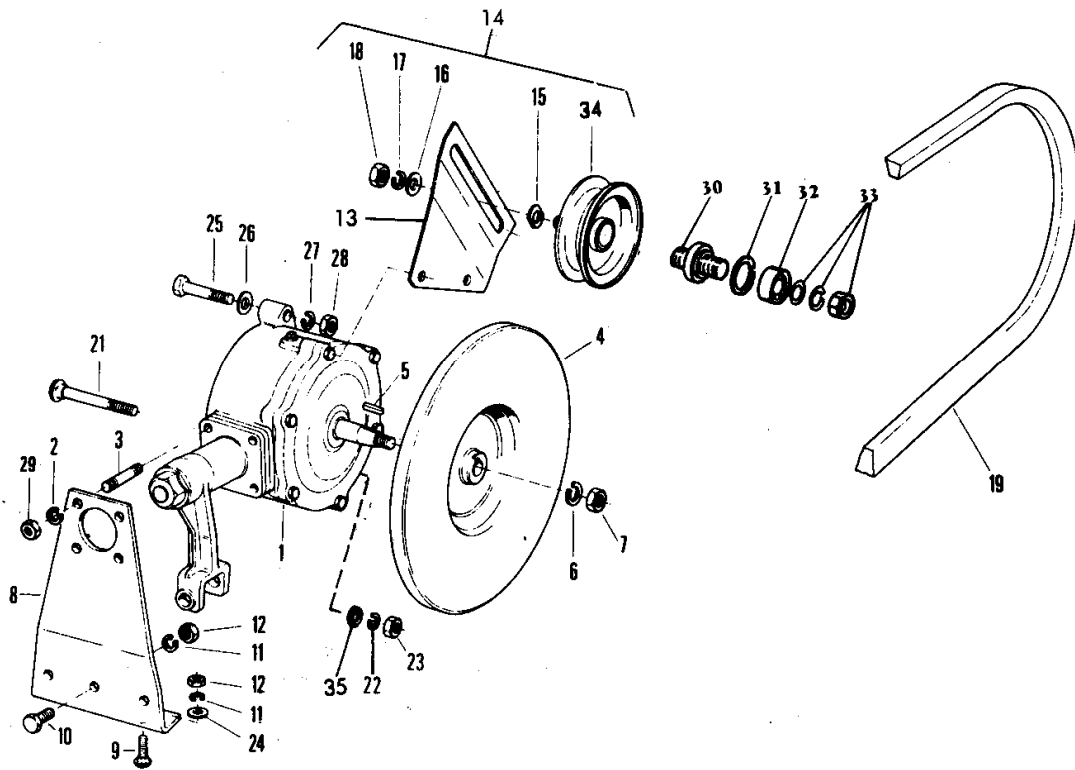
KNIFE DRIVE - CRANK DRIVE

Item	Part Number	Qty	Description	Comments
				CRANK DRIVE
1	417264M91	1	Bracket	
2	416579M91	1	Pulley	
3	416580M91	1	Pulley	
4	416584M1	1	Washer	
5	339072X1	1	Washer	
6	339380X1	1	Washer	
7	339070X1	1	Nut	
8	339072X1	1	Washer	
9	339380X1	1	Washer	
10	339070X1	1	Nut	
11	339402X1	3	Nut Metric	
12	339376X1	3	Lock Washer	
13	404411M1	1	Anglepiece	
14	390809X1	3	Bolt Metric	
	339376X1	3	Lock Washer	
	339402X1	3	Nut Metric	
15	339814X1	3	Screw Metric	
	339025X1	3	Washer Metric	
16	339003X1	1	Greaser	
17	339153X1	2	Screw Metric	
18	412382M1	1	Trunnion	
19	323478M1	1	Roller	
20	339569X1	1	Bearing	
21	412381M1	1	Washer	
22	390843X1	1	Nipple	
23	417270M91	1	Shaft	
24	412383M1	1	Plate	
25	339070X1	1	Nut	
26	402997M1	1	Cover	
27	417273M1	1	Washer	
28	1440489X1	2	Bearing Ball	
29	417269M1	1	Tube	
30	417265M1	1	Bracket	
31	339199X1	2	Ring	
32	417268M1	1	Plate	
33	417266M91	1	Pulley	
34	339666X1	6	Screw Metric	
35	417267M1	1	Hub	
36	403735M91	1	Pulley	
37	339375X1	6	Lock Washer	
38	339030X1	6	Nut Metric	
39	391411X1	1	Key Door	
40	391459X1	1	Washer Metric	
41	391232X1	1	Nut	
42	390448X1	1	Pin	
43	417205M91	1	Bearer	
44	339123X1	2	Screw Metric	
	339374X1	2	Lock Washer	
	339169X1	2	Nut Metric	
45	402607M1	1	Belt	



8

MESSERANTRIEB TAUMELANTRIEB  
KNIFE DRIVE WOBBLE DRIVE  
COMMANDE DE LAME COMMANDE OSCILLANTE



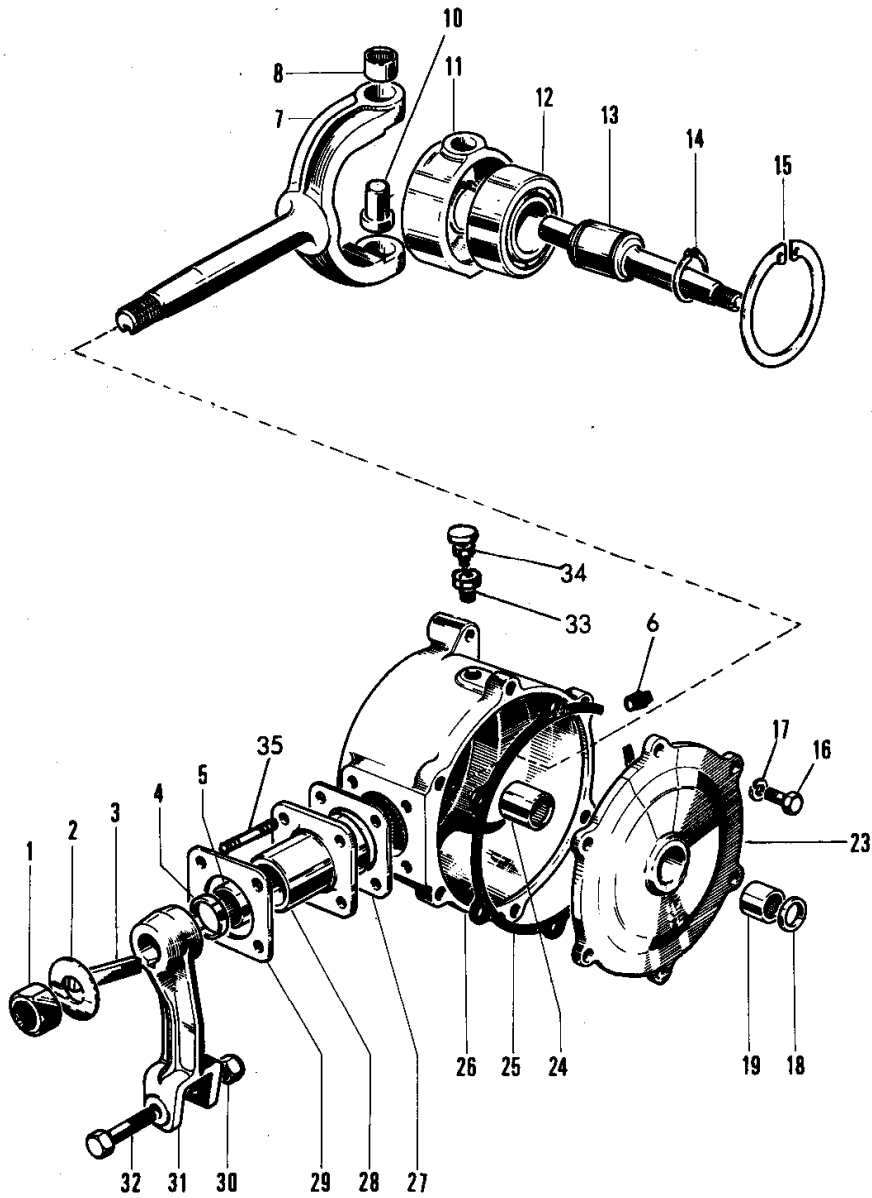
78-83

KNIFE DRIVE - WOBBLE DRIVE

Item	Part Number	Qty	Description	Comments
				WOBBLE DRIVE
1	1724135M91	1	Wobble Drive	(A)
2	609930M1	4	Washer	
3	357133X1	4	Stud	
4	1723905M1	1	Pulley	
5	1721356M1	1	Key Door	
6	339377X1	1	Lock Washer	
7	353427X1	1	Nut Unf	
8	1721348M1	1	Bracket	
9	390809X1	3	Bolt Metric	
10	339814X1	3	Screw Metric	
11	339376X1	6	Lock Washer	
12	339402X1	6	Nut Metric	
13	916649M1	1	Support	
14	621579M91	1	Pulley	
15	391102X1	1	Washer Metric	
16	339072X1	1	Washer	
17	339380X1	1	Washer	
18	339070X1	1	Nut	
19	1722835M1	1	Belt	
21	391231X1	1	Bolt Metric	
22	339376X1	1	Lock Washer	
23	339402X1	1	Nut Metric	
24	339025X1	3	Washer Metric	
25	339679X1	1	Screw Metric	
26	391396X1	2	Washer Metric	
27	339376X1	2	Lock Washer	
28	339402X1	2	Nut Metric	
29	353426X1	4	Nut Unf	
30	916003M1	1	Pin	
31	208230M1	1	Ring	
32	22258X	1	Bearing Assy	
33	353774X1	1	Washer	
	353433X1	1	Lock Washer	
	353429X1	1	Nut Unf	
34	213736X1	1	Pulley	
35	196107M1	1	Washer	

(A)  
See Page - Reference Number 10

GETRIEBE TAUMELANTRIEB  
WOBBLE DRIVE  
BOITIER DE COMMANDE



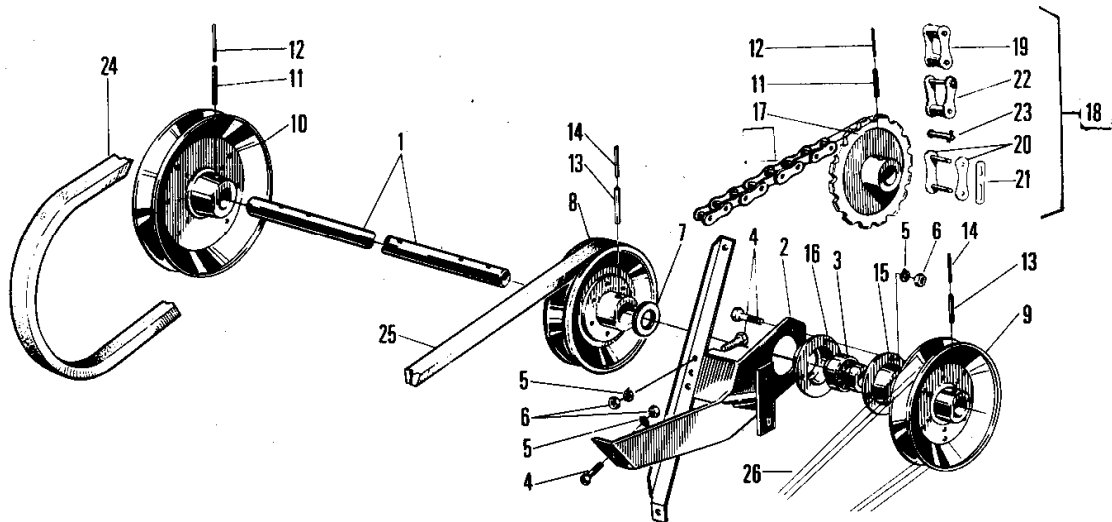
78-84

WOBBLE DRIVE

Item	Part Number	Qty	Description
	1724135M91	1	Wobble Drive
1	355646X1	1	Nut Unf
2	239497M1	1	Washer
3	49378X	1	Key
4	834782M1	2	Seal
5	833346M1	2	Bearing
6	375181X1	2	Plug
7	261606M1	1	Yoke
8	832879M1	2	Bearing
10	249149M3	2	Pin
11	249148M4	1	Housing
12	833309M1	1	Bearing
13	239598M2	1	Shaft
14	364553X1	2	Ring
15	367504X1	1	Ring
16	353678X1	6	Screw Unc
	353679X1	6	Screw Unc
17	353446X1	4	Lock Washer
18	831135M1	2	Seal
19	843282M1	1	Bearing
23	236568M1	1	Cover
24	843283M1	1	Bearing
25	236567M1	1	Gasket
26	236566M1	1	Housing
27	236579M1	1	Gasket
28	261607M1	1	Flange
29	785613M1	2	Spacer
30	357561X1	1	Nut Unf
31	239160M2	1	Arm
32	238499M1	1	Bolt
33	362007X1	1	Reducer
34	182099M91	1	Breather
35	357133X1	4	Stud

12

SCHNEIDWERKVORGELEGE  
REDUCTION  
REDUCTEUR



76-529

REDUCTION

Item	Part Number	Qty	Description	Comments
1	1723449M1	1	Shaft	(A)
	1723450M1	1	Shaft	
2	1724117M91	1	Support	
3	412260M1	1	Bearing Assy	
4	339761X1	7	Screw Metric	
	339123X1	6	Screw Metric	
5	339374X1	7	Lock Washer	
6	339169X1	7	Nut Metric	
7	339956X1	1	Washer	
8	418204M91	1	Pulley	
9	1722611M91	1	Pulley	
10	412397M91	1	Pulley	
11	339192X1	4	Pin	
	390383X1	2	Pin	(A)
12	390533X1	4	Pin	
	390543X1	2	Pin	(A)
13	339192X1	4	Pin	(B)
	339193X1	2	Pin	
14	390533X1	4	Pin	(B)
	339248X1	2	Pin	
15	412261M1	1	Ring	
16	412315M1	1	Ring	
17	418214M91	1	Sprocket	Number of teeth/spines 15
18	413840M91	1	Chain	(B)
19	329312M91	26	Link	
	329313M91	25	Link	
20	329314M91	1	Link	
21	329292M1	1	Clip	
22	329316M91	1	Cranked Link	
23	329888M91	1	Pin	
24	417972M1	1	Belt	(A)
25	418209M1	1	Belt	
26	402607M1	1	Belt	(A)
	1722835M1	1	Belt	(B)
				(A)
				USED WITH 8' TABLE
				(B)
				USED WITH 10' TABLE

**Buy Now**



Our support email:

[ebooklibonline@outlook.com](mailto:ebooklibonline@outlook.com)