

Page Title	Page Number
KNIFE - 8'	3
KNIFE - 10'	4
KNIFE - 12'	7
KNIFE DRIVE - 8'	8
KNIFE DRIVE - 10' - 12'	11
DRIVE BOX	12
DRIVE SHAFT - 8'	15
DRIVE SHAFT - 10' - 12'	16
DRIVE SHAFT - 10' - 12'	19
REEL	20
REEL CARRIER - GOVERNOR PULLEY MECHANICAL ADJUSTING	23
REEL CARRIER FIXED COMPONENTS - HYDRAULIC ADJUSTING	24
REEL CARRIER ROTATIVE COMPONENTS - HYDRAULIC ADJUSTING	27
REEL DRIVE-HYDRAULIC ADJUSTING - GOVERNOR PULLEY MECHANICAL ADJUSTING	28
REEL DRIVE-HYDRAULIC ADJUSTING - GOVERNOR PULLEY MECHANICAL ADJUSTING	31
GOVERNOR PULLEY	32
FRONT AUGER	35
FIX TABLE	39
TABLE Q A	43
PLATE - FIX TABLE	47
TABLE Q A	48
EXTENSION DIVIDERS	51
DIVIDERS	52
GUARDS-TRANSMISSION - 8'	55
GUARD-LOWER PARTS - 10'	56
ADDITIONAL GUARDS	59
TUBE - 10' - 12'	60
FEEDER ELEVATOR (FIXED COMPONENTS) - FIX TABLE	63
FEEDER ELEVATOR (ROTATING COMPONENTS) - FIX TABLE	64
FEEDER ELEVATOR (FIXED COMPONENTS) - QUICK ATTACH	67
FEEDER ELEVATOR (ROTATING COMPONENTS) - QUICK ATTACH	71
ELEVATOR CHAIN (DETAILS) - FIX TABLE	75
ELEVATOR CHAIN (DETAILS) - Q.A.	76
REAR BEATER	79
ELECTROMAGNETIC CLUTCH	80
CYLINDER	83
CYLINDER DRIVE	84
PULLEY (GEAR BOX CYLINDER)	87
PULLEY (GEAR BOX CYLINDER)	88
GEAR BOX CYLINDER	91
CONCAVE	92
CONCAVE ADJUSTMENT	95
TRAP STONE	96
SHAKER SHOE	99
PAN	100
SCREEN	103
SHAKER SHOE DRIVE	104
FANNING MILL	107
FANNING MILL ADJUSTMENT	108
SUPPORT (FANNING MILL ADJUSTMENT) - FANNING MILL ADJUSTMENT	111
STRAW WALKER DRIVE	112
STRAW WALKER	115
GLEANINGS ELEVATOR	116
REAR AXLE GUARD	119
MACHINE HOUSING (INTERNAL FIXED COMPONENTS)	120
MACHINE HOUSING (EXTERNAL FIXED COMPONENTS)	123
MACHINE HOUSING (ROTATING COMPONENTS)	127
HOOD	131
GRAIN ELEVATOR	132
GRAIN TANK	136
PLATE	139A
AUGER LOWER	140
AUGER DIVIDER	143
DRIVING SHAFT FOR TANK UNLOADING	144
UNLOADER PIPE	148
BALANCE UNLOADER PIPE	151

TABLE OF CONTENT

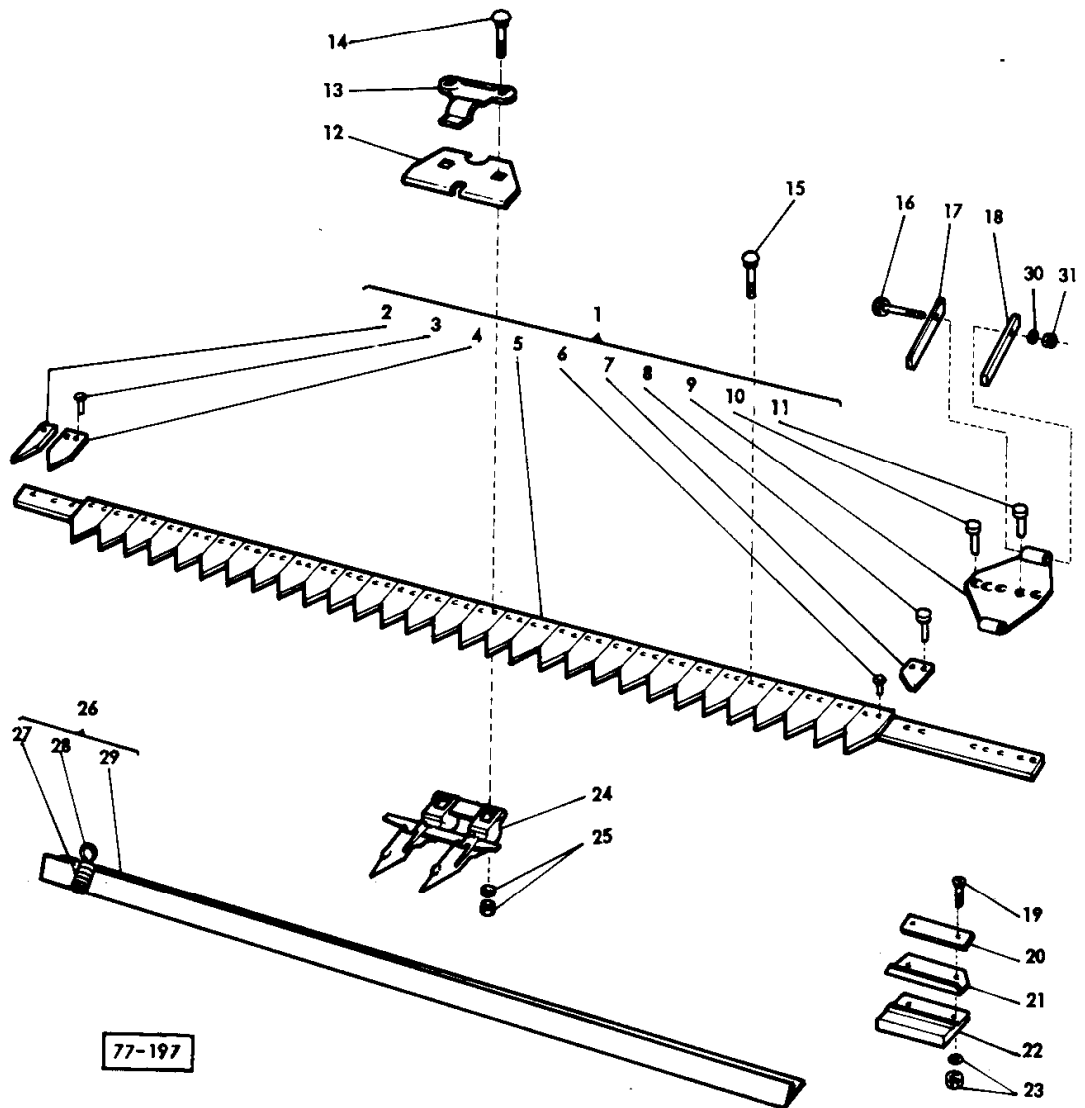
ENGINE COVER ARRANGEMENT	152
FRAME ENGINE	155
ENGINE	156
EXHAUST	159
AIR FILTER - UP TO SERIAL NO	160
AIR FILTER - FROM SERIAL NO	163
FUEL TANK AND FUEL LINES	164
PRE-FILTER - 911188M2	167
AIR FILTER - 908945M93	168
AIR FILTER - 1604852M92	171
ROTATING AIR INTAKE	172
RADIATOR	175
ENGINE POWER OUTPUT SHAFT	176
ELECTRICAL EQUIPMENT - PARIS RHONE	179
ELECTRICAL EQUIPMENT - LUCAS	180
ELECTRICAL EQUIPMENT - LUCAS	183
DYNAMO - 897104M92	184
STARTER - 1860093M2	187
STARTER - 909971M2	188
ALTERNATOR - 908487M2	191
ALTERNATOR - 1446923M91	192
CYLINDER DRIVE	195
GUARDS-TRANSMISSION - CYLINDER DRIVE	199
TRACTION DRIVE	200
CLUTCH	203
TRANSMISSION - TRACTION	204
GEAR BOX - COVER	207
GEAR BOX - SPEED GEAR	208
GEAR BOX - PRIMARY AND SECOND MOTION SHAFT	209B
GEAR BOX - DIFFERENTIAL	209C
GEAR BOX - BRAKE	209F
FRONT AXLE	211
BRAKE OPERATING - PEDAL	212
BRAKE OPERATING HYDRAULIC	215
DRUM BRAKE - KNOTT	216
DRUM BRAKE - PERROT	219
MASTER CYLINDER - 418644M1	220
HANDBRAKE	223
OPERATORS PLATFORM	224
LADDER RAILS	227
SEAT - SABLE	228
SEAT - FRITZMEIER	231
CONTROL PANEL	232
PANEL INSTRUMENTS	235
STEERING	236
HYDROSTATIC STEERING PUMP	239
HYDROSTATIC STEERING PUMP	240
SAFETY BLOCK - GERMANY	243
REAR AXLE	244
HYDRAULIC FOR TABLE - 8'	247
HYDRAULIC (TABLE) - 10'	248
TABLE LIFT - FIX TABLE	251
TABLE LIFT - QUICK-ATTACH	252
TABLE LIFT - QUICK-ATTACH	255
OIL CONTAINER AND HYDRAULIC PUMP	256
OIL CONTAINER AND HYDRAULIC PUMP	259
HYDRAULIC PUMP - OIL CONTAINER	260
HYDRAULIC PUMP - 1604632M1	263
OIL CONTAINER - 1604638M3	264
HYDRAULIC (VALVE - PUMP)	267
HYDRAULIC (VALVE - RAM)	271
CONTROL VALVE (DETAIL)	275
CONTROL VALVE (DETAIL) - 1604037	276
VALVE - 417246M1	279
VALVE - 619663M1	280
RAM (TABLE LIFT FIX) - 178013M94	283
RAM FOR TABLE LIFT - 12'	284
RAM FOR TABLE LIFT - 1748103M92	287

TABLE OF CONTENT

00

RAM FOR TABLE LIFT - 1748104M92	288
RAM FOR TRACTION - 1748000M93	291
RAM (REEL LIFT) - 1748022M93	292
RAM FOR STEERING - 1748044M92	295
RAM FOR STEERING - 1748044M93	296
DRIVE BELTS AND CHAINS	299
LIGHTING (TABLE)	300
LIGHTING (CABLE)	303
LIGHTING (HEAD LAMP AND TAIL LAMPS)	307
TRANSFERS (TABLE)	312
TRANSFERS LEFT	315
TRANSFERS RIGHT	316
UPPER GUARDS	319
GUARDS LOWER	320
GUARDS RIGHT	323
GUARDS LEFT	324
LADDER REAR AND RAIL	327
ROAD SIGN - GERMANY	328
TOOLS	331
WEIGHT	332

LAME  
 MESSER  
 CUCHILLA  
 KNIFE } 8'

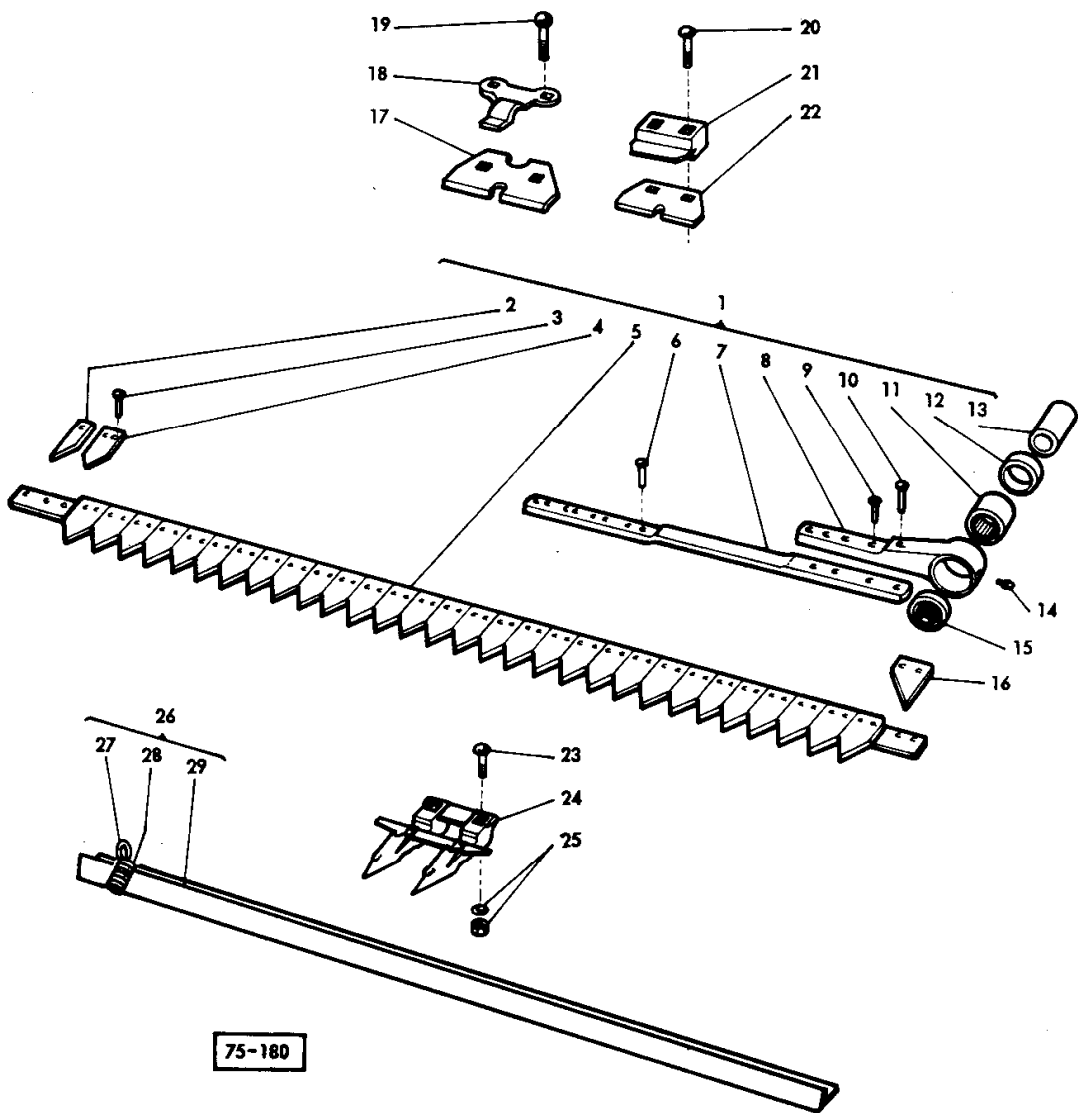


KNIFE - 8'

Item	Part Number	Qty	Description	Comments
1	402320M93	2	Knife	(A)
	402320M93	1	Knife	(B)
	417836M91	1	Knife	(B)
2	790863M1	2	Section	(A)
	790863M1	1	Section	(B)
3	391493X1	136	Rivet	(A)
	391493X1	68	Rivet	(B)
4	206236M1	66	Section	(A)
	210987M1	33	Section	(B)
5	1724501M1	2	Stem	(A)
	1724501M1	1	Stem	(B)
6	391493X1	136	Rivet	(A)
	391493X1	68	Rivet	(B)
7	647116M1	2	Section	(A)
	647116M1	1	Section	(B)
8	391498X1	6	Rivet	(A)
	391498X1	3	Rivet	(B)
9	724499M91	2	Knife Head	(A)
	724499M91	1	Knife Head	(B)
10	339419X1	8	Rivet	(A)
	339419X1	4	Rivet	(B)
11	391498X1	6	Rivet	(A)
	391498X1	3	Rivet	(B)
12	206196M1	8	Guide	(A, B)
13	206195M1	8	Clip	(A, B)
14	1442457X1	16	Bolt Metric	(A, B)
15	1442456X1	18	Screw	(A, B)
16	339204X1	2	Screw	(A, B)
17	204321M1	1	Plate	(A, B)
18	402321M1	1	Plate	(A, B)
19	390640X1	2	Screw Metric	(A, B)
20	404795M1	1	Plate	(A, B)
21	404409M1	1	Guide	(A, B)
22	404410M1	1	Guide	(A, B)
23	339376X1	2	Lock Washer	(A, B)
	339402X1	2	Nut Metric	(A, B)
24	609993M91	17	Finger	(A, B)
25	339534X1	34	Washer Metric	(A, B)
	339402X1	34	Nut Metric	(A, B)
26	402727M91	1	Shield	(A, B)
27	322980M1	2	Spring	(A, B)
28	322979M1	2	Knotter Hook	(A, B)
		1		Not serviced, order 26 (A, B)
30	339376X1	2	Lock Washer	(A, B)
31	339402X1	2	Nut Metric	(A, B)
				(A) 2 SERATED VERSION
				(B) 1 SERATED VERSION + 1 SMOOTH VERSION

4

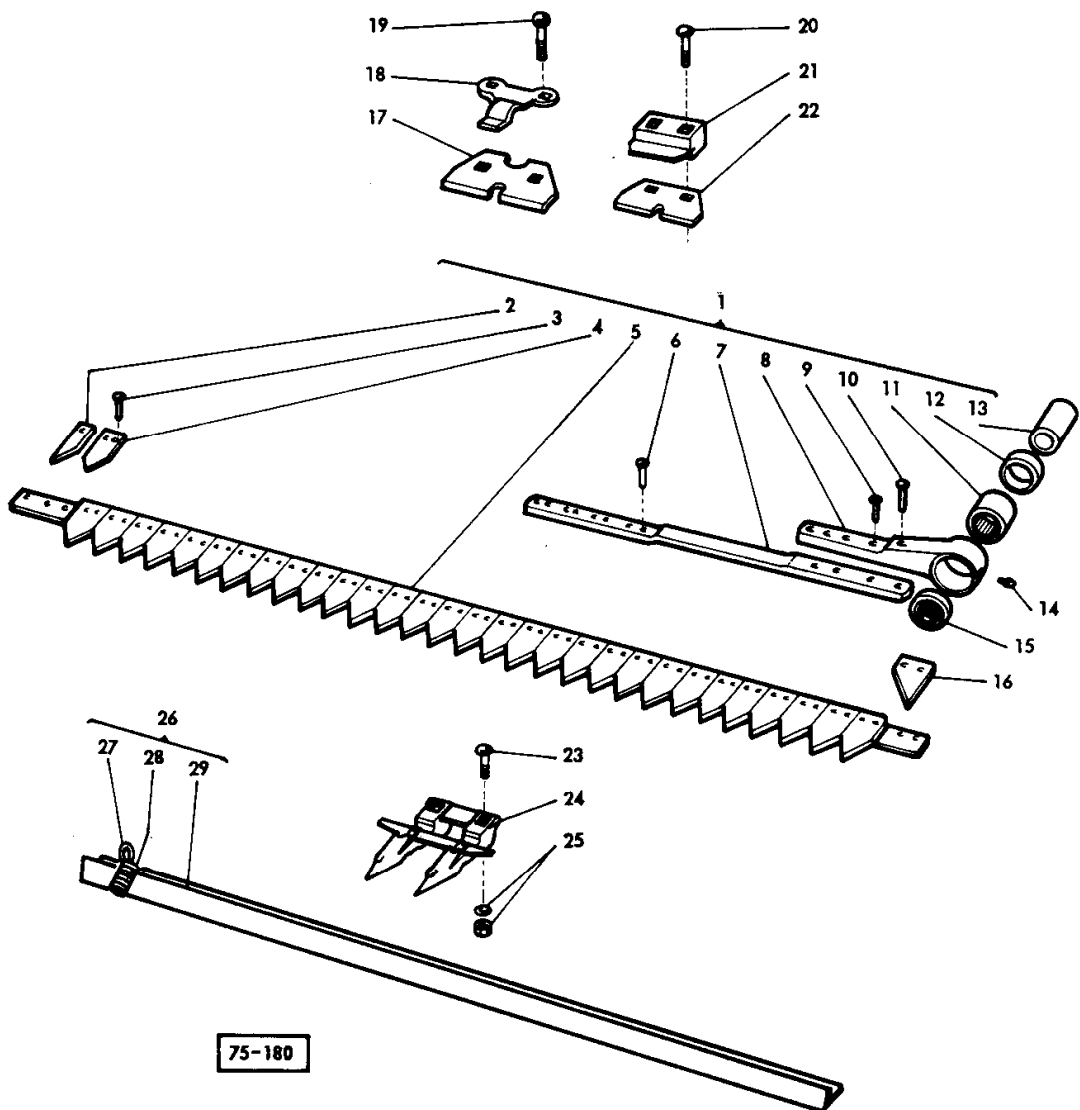
LAME  
MESSER  
CUCHILLA  
KNIFE } 10'



KNIFE - 10'

Item	Part Number	Qty	Description	Comments
1	1723545M92	2	Knife	(A)
	1723545M92	1	Knife	(B)
	1724687M91	1	Knife	(B)
2	790863M1	2	Section	(A)
	790863M1	1	Section	(B)
3	391493X1	148	Rivet	(A)
	391493X1	74	Rivet	(B)
4	206236M1	78	Section	(A)
	210987M1	39	Section	(B)
5	1724506M1	2	Support	(A)
	1724506M1	1	Support	(B)
6	1441934X1	16	Rivet	(A)
	1441934X1	8	Rivet	(B)
7	785583M1	2	Spring	(A)
	785583M1	1	Spring	(B)
8	785584M1	2	Head	(A)
	785584M1	1	Head	(B)
9	29140X	8	Rivet	(A)
	29140X	4	Rivet	(B)
10	29142X	2	Rivet	(A)
	29142X	1	Rivet	(B)
11	833083M1	2	Bearing Needle	(A)
	833083M1	1	Bearing Needle	(B)
12	831225M1	4	Seal	(A)
	831225M1	2	Seal	(B)
13	239242M1	2	Roller	(A)
	239242M1	1	Roller	(B)
14	13811X	2	Grease Nipple	(A)
	13811X	1	Grease Nipple	(B)
15	831225M1	4	Seal	(A)
	831225M1	2	Seal	(B)
16	647116M1	2	Section	(A)
	647116M1	1	Section	(B)
17	206196M1	10	Guide	(A, B)
18	206195M1	8	Clip	(A, B)
19	1442457X1	16	Bolt Metric	(A, B)
20	1441671X1	2	Bolt Metric	(A, B)
21	786506M1	1	Clip	(A, B)
22	206196M1	10	Guide	(A, B)
23	1442456X1	22	Screw	(A, B)
24	609993M91	20	Finger	(A, B)
25	339534X1	40	Washer Metric	(A, B)
	339402X1	40	Nut Metric	(A, B)
26	402729M91	1	Guard	(A, B)
27	322979M1	2	Knotter Hook	(A, B)
28	322980M1	2	Spring	(A, B)
				Not serviced, order NO. 26
				(A)
				2 SERATED VERSION
				(B)
				1 SERATED VERSION + 1 SMOOTH VERSION

LAME  
 MESSER  
 CUCHILLA  
 KNIFE } 12'



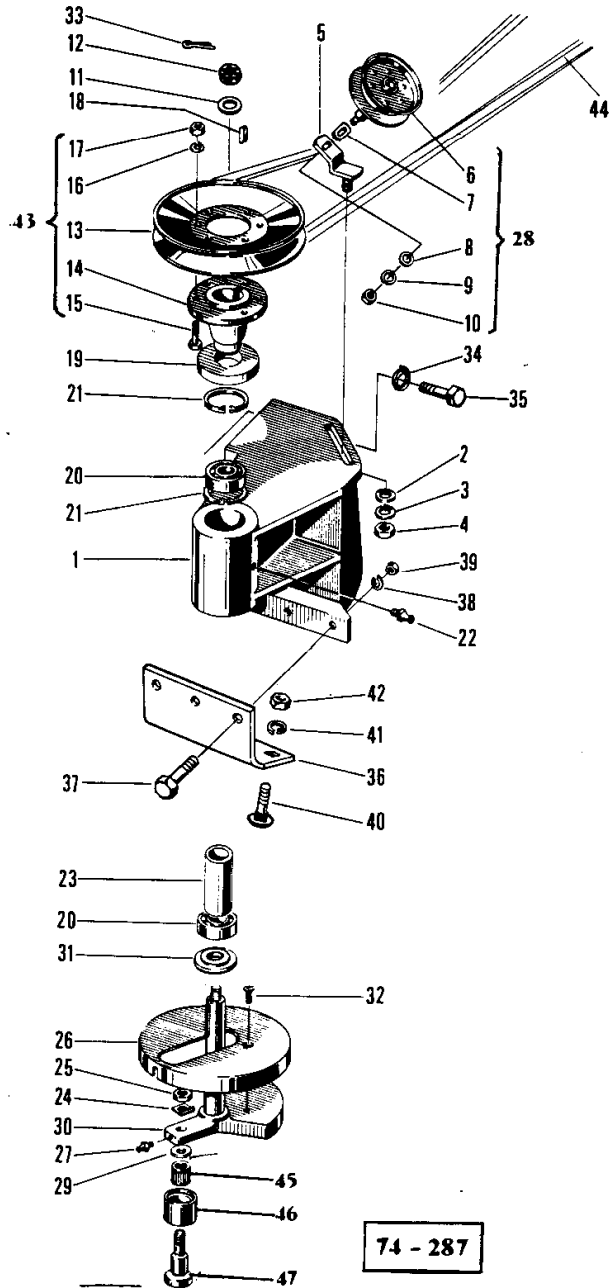
75-180



KNIFE - 12'

Item	Part Number	Qty	Description	Comments
1	1721354M92	2	Knife	(A)
	1721354M92	1	Knife	(B)
	1724688M91	1	Knife	(B)
2	790863M1	2	Section	(A)
	790863M1	1	Section	(B)
3	391493X1	180	Rivet	(A)
	391493X1	90	Rivet	(B)
4	206236M1	94	Section	(A)
	210987M1	47	Section	(B)
5	1724507M1	2	Bearer	(A)
	1724507M1	1	Bearer	(B)
6	1441934X1	16	Rivet	(A)
	1441934X1	8	Rivet	(B)
7	785583M1	2	Spring	(A)
	785583M1	1	Spring	(B)
8	785584M1	2	Head	(A)
	785584M1	1	Head	(B)
9	29140X	8	Rivet	(A)
	29140X	4	Rivet	(B)
10	29142X	2	Rivet	(A)
	29142X	1	Rivet	(B)
11	833083M1	2	Bearing Needle	(A)
	833083M1	1	Bearing Needle	(B)
12	831225M1	4	Seal	(A)
	831225M1	2	Seal	(B)
13	239242M1	2	Roller	(A)
	239242M1	1	Roller	(B)
14	13811X	2	Grease Nipple	(A)
	13811X	1	Grease Nipple	(B)
15	831225M1	4	Seal	(A)
	831225M1	2	Seal	(B)
16	647116M1	2	Section	(A)
	647116M1	1	Section	(B)
17	206196M1	12	Guide	(A, B)
18	206195M1	10	Clip	(A, B)
19	1442457X1	20	Bolt Metric	(A, B)
20	1441671X1	2	Bolt Metric	(A, B)
21	786506M1	1	Clip	(A, B)
22	206196M1	12	Guide	(A, B)
23	1442456X1	26	Screw	(A, B)
24	609993M91	24	Finger	(A, B)
25	339534X1	48	Washer Metric	(A, B)
	339402X1	48	Nut Metric	(A, B)
26	403810M91	1	Guard	(A, B)
27	322979M1	2	Knotter Hook	(A, B)
28	322980M1	2	Spring	(A, B)
29		1		Not serviced, order NO. 26 (A, B) (A) 2 SERATED VERSION (B) 1 SERATED VERSION + 1 SMOOTH VERSION

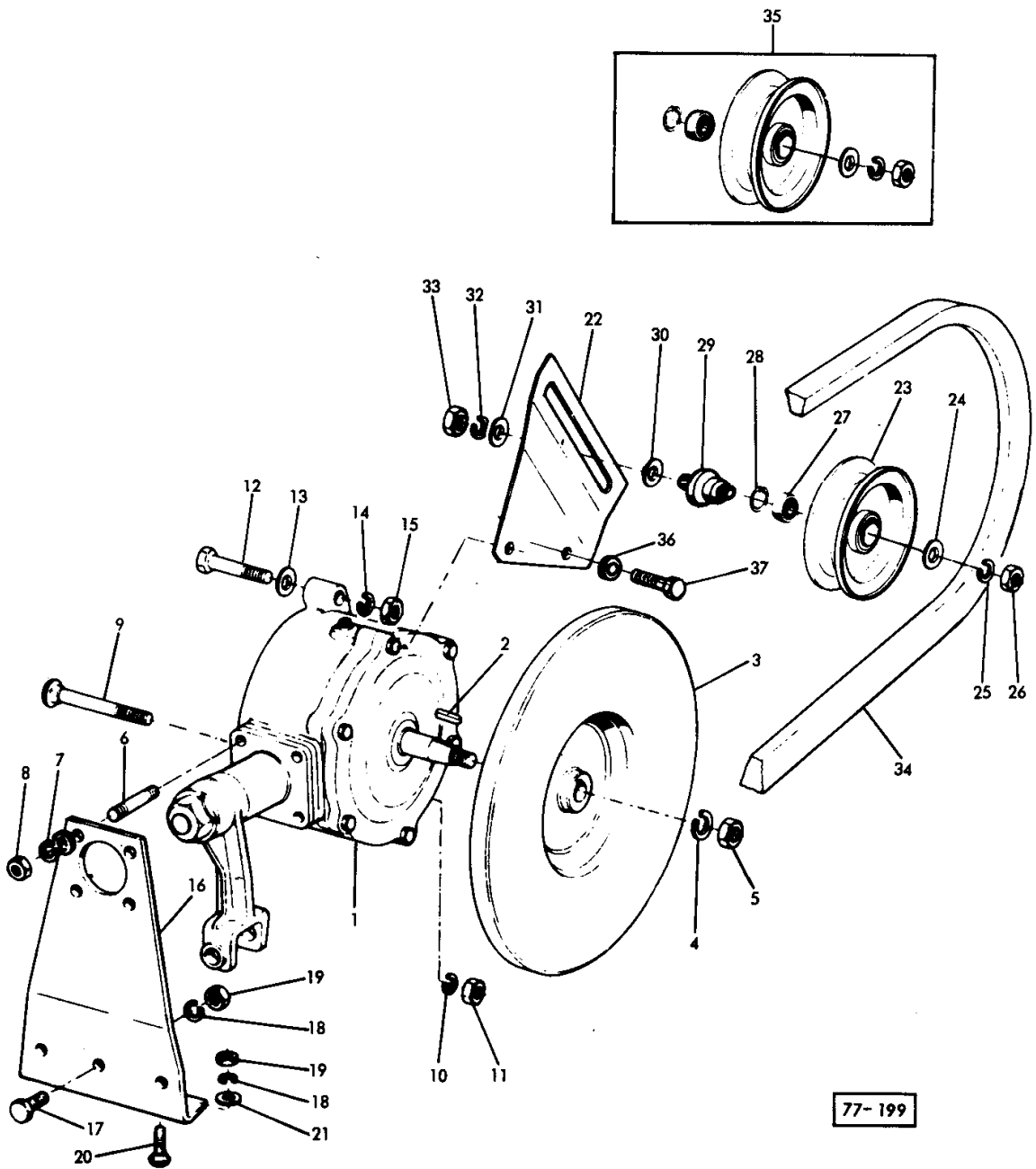
COMMANDE DE LAME  
 MESSERANTRIEB  
 MANDO DE LA CUCHILLA  
 KNIFE DRIVE



KNIFE DRIVE - 8'

Item	Part Number	Qty	Description	Comments
	417264M91	1	Bracket	
1	417265M1	1	Bracket	
2	339072X1	1	Washer	
3	339380X1	1	Washer	
4	339070X1	1	Nut	
5	417205M91	1	Bearer	
6	416580M91	1	Pulley	
7	416584M1	1	Washer	
8	339072X1	1	Washer	
9	339380X1	1	Washer	
10	339070X1	1	Nut	
11	391459X1	1	Washer Metric	
12	391232X1	1	Nut	
13	403735M91	1	Pulley	
14	417267M1	1	Hub	
15	339666X1	6	Screw Metric	
16	339375X1	6	Lock Washer	
17	339030X1	6	Nut Metric	
18	391411X1	1	Key Door	
19	417268M1	1	Plate	
20	1440489X1	2	Bearing Ball	
21	339199X1	2	Ring	
22	339033X1	1	Nipple	
23	417269M1	1	Tube	
24	412383M1	1	Plate	
25	339070X1	1	Nut	
26	402997M1	1	Cover	
27	390843X1	1	Nipple	
28	416579M91	1	Pulley	
29	412381M1	1	Washer	
30	417270M91	1	Shaft	
31	417273M1	1	Washer	
32	339153X1	2	Screw Metric	
33	390448X1	1	Pin	
34	339374X1	2	Lock Washer	
	339169X1	2	Nut Metric	
35	339123X1	2	Screw Metric	
36	404411M1	1	Anglepiece	
37	339451X1	3	Screw Metric	
38	339376X1	3	Lock Washer	
39	339402X1	3	Nut Metric	
40	339172X1	3	Bolt Metric	
41	339376X1	3	Lock Washer	
42	339402X1	3	Nut Metric	
43	417266M91	1	Pulley	
44	402607M1	1	Belt	
45	339569X1	1	Bearing	
46	323478M1	1	Roller	
47	412382M1	1	Trunnion	

COMMANDE DE LAME }  
 MESSERANTRIEB } 10' - 12'  
 MANDO DE LA CUCHILLA }  
 KNIFE DRIVE }



77-199

KNIFE DRIVE - 10' - 12'

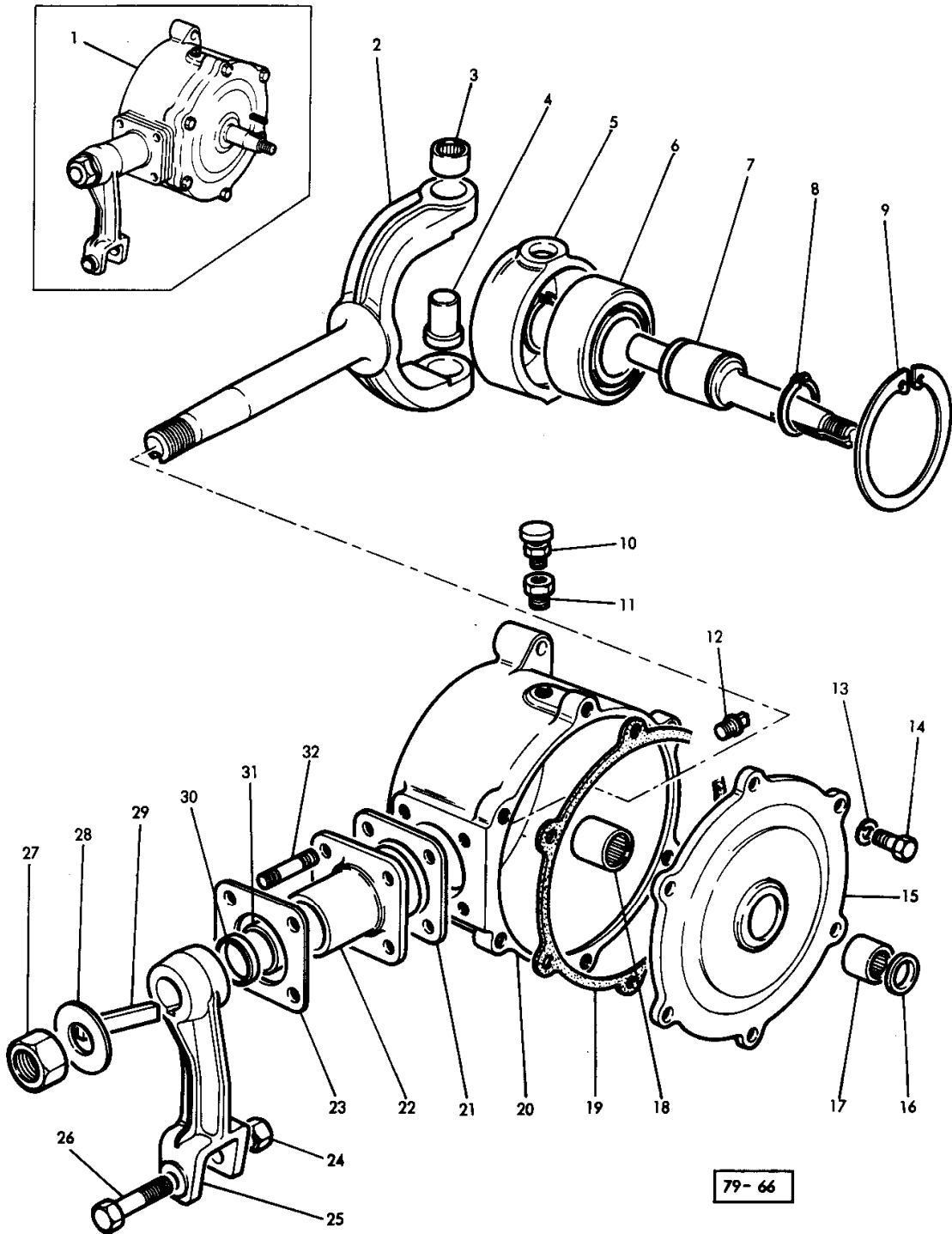
Item	Part Number	Qty	Description	Comments
1	1724135M91	1	Wobble Drive	(A)
2	1721356M1	1	Key Door	10' - 12'
3	1725089M1	1	Pulley	
4	339377X1	1	Lock Washer	
5	353427X1	1	Nut Unf	
6	357133X1	4	Stud	
7	609930M1	4	Washer	
	339369X1	4	Lock Washer	
8	353426X1	4	Nut Unf	
9	391231X1	1	Bolt Metric	
10	339376X1	1	Lock Washer	
11	339402X1	1	Nut Metric	
12	339679X1	1	Screw Metric	
13	391396X1	1	Washer Metric	
14	339376X1	1	Lock Washer	
15	339402X1	1	Nut Metric	
16	1721348M1	1	Bracket	
17	339451X1	3	Screw Metric	
18	339376X1	6	Lock Washer	
19	339402X1	6	Nut Metric	
20	390397X1	3	Bolt	
21	339025X1	3	Washer Metric	
22	916649M1	1	Support	
23	213736M1	1	Pulley	
24	353774X1	1	Washer	
25	353433X1	1	Lock Washer	
26	353427X1	1	Nut Unf	
27	22258X	1	Bearing Assy	
28	208230M1	1	Ring	
29	916003M1	1	Pin	
30	391102X1	1	Washer Metric	
31	339072X1	1	Washer	
32	339380X1	1	Washer	
33	339070X1	1	Nut	
34	410959M1	1	Belt	
35	621579M91	1	Pulley	
36	261428M1	X	Washer	
37	353679X1	2	Screw Unc	

(A)

See Page - Reference Number 13

12

BOITIER DE COMMANDE  
 GETRIEBE  
 CAJA DE MANDO  
 DRIVE BOX



79-66

Imprimé en FRANCE

EOE

1246 107 M2 (2) 2/70

**Buy Now**



Our support email:

[ebooklibonline@outlook.com](mailto:ebooklibonline@outlook.com)